



Proof a press with CMYK

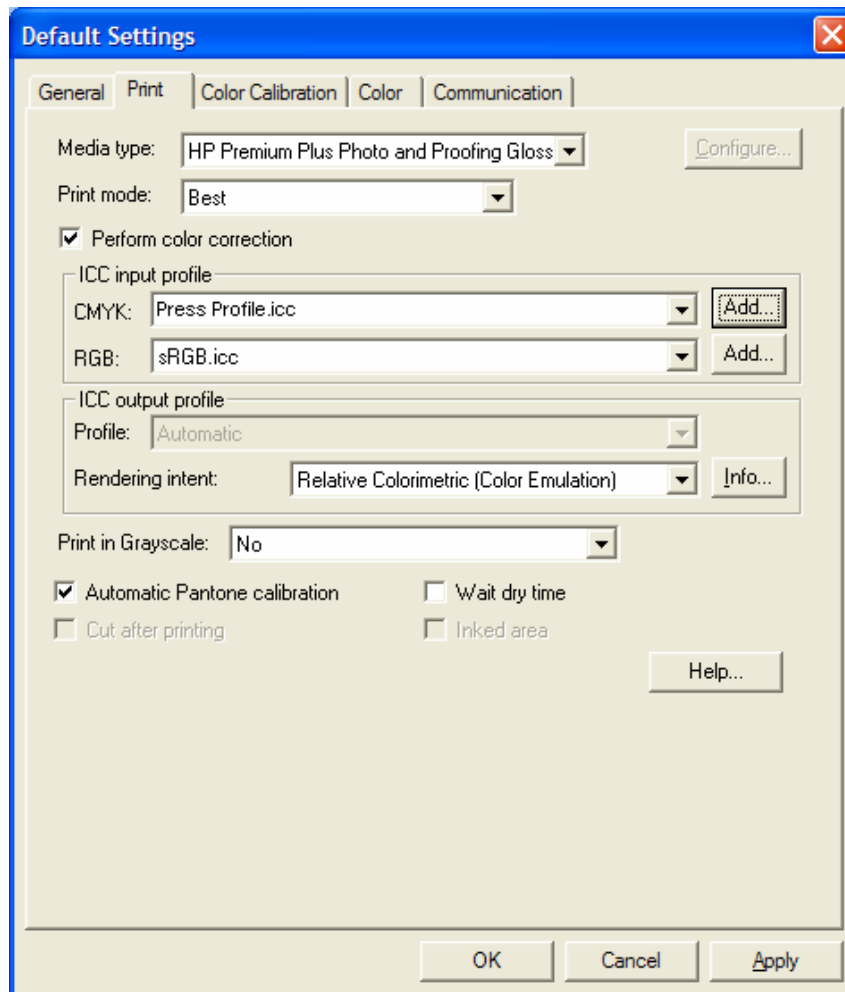
Application: QuarkXPress 6.5

Printer: HP Designjet 30/130 series

Software: HP Software RIP

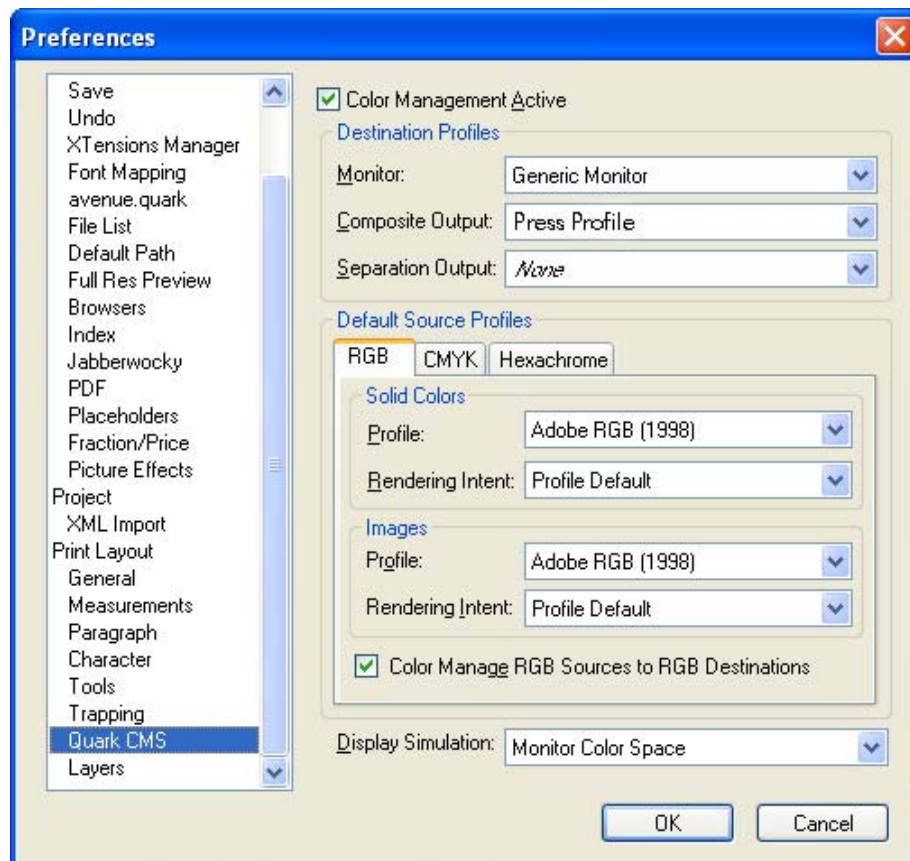
Operating System: Windows

1. First recommendations:
 - See the [Media type functionality & features](#) and choose the most appropriate media.
 - It is essential that you have the media type correctly calibrated with the printer and print mode, consult the [Calibrate my printer](#) document.
2. If it isn't there add the press profile you want to emulate to QuarkXPress and to the HP Software RIP.
 - If you need to add the press profile to the application, copy it in the next folder:
Windows 98 and Windows ME: C:\WINDOWS\SYSTEM\COLOR.
Windows XP: C:\WINDOWS\SYSTEM32\COLOR.
Windows 2000 and Windows NT: C:\WINNT\SYSTEM32\COLOR.
 - If you need to add the press profile to the HP Software RIP:
 - a. Open the HP Software RIP.
 - b. Open the **Default Settings** menu, **Setup menu > Default Settings... > Print** tab:
 - Check **Perform Color Correction**.
 - **ICC input profile > CMYK > Add...**: browse and add the press profile.



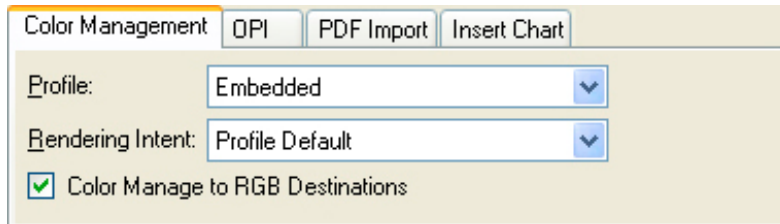
- c. Click **OK**.
3. Open QuarkXpress.

4. Configure the color **Preferences, Edit menu > Preferences... > Quark CMS** (left hand menu):
 - Check the **Color Management Active** checkbox.
 - **Destination Profiles:**
 - **Monitor:** If you want to get a good display, profile your monitor ([how to profile my monitor](#)) and use the setting here to select the monitor profile.
 - **Composite Output:** Select the press profile you want to emulate.
 - **Default Source Profiles > RGB** tab:
 - **Profile** (Solid Colors/Images): Adobe RGB (1998).
 - **Rendering Intent** (Solid Colors/Images): Profile Default.
 - Check **Color Manage RGB Sources to RGB Destinations**.
 - **Default Source Profiles > CMYK** tab:
 - **Profile** (Solid Colors/Images): SWOP Press.
 - **Rendering Intent** (Solid Colors/Images): Profile Default.
 - Check **Color Manage CMYK Sources to CMYK Destinations**.
 - **Display simulation:** Select **Monitor Color Space** to get an accurate display of your document, select **Composite Output Color Space** to emulate the press on the monitor (you must have the monitor profile correctly selected on **Monitor** to get a good result).

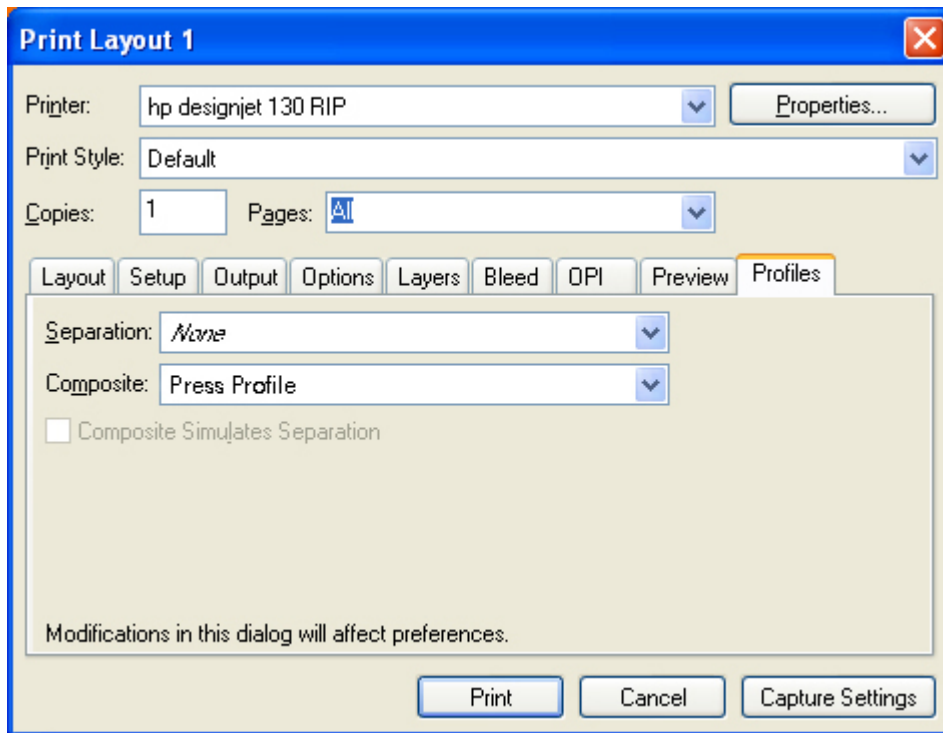


- Click **OK**.
5. Open your project, **File menu > Open...**, and browse it. To insert images, draw a box with the **Rectangle Picture Box** and insert the image, **File menu > Get Picture...**:

- Browse the file.
- **Color Management** tab:
 - **Profile:** If the image has an Embedded profile, preserve it, if not, select Default.
 - **Rendering Intent:** Profile Default.
 - Check **Color Manage to RGB/CMYK Destinations.**



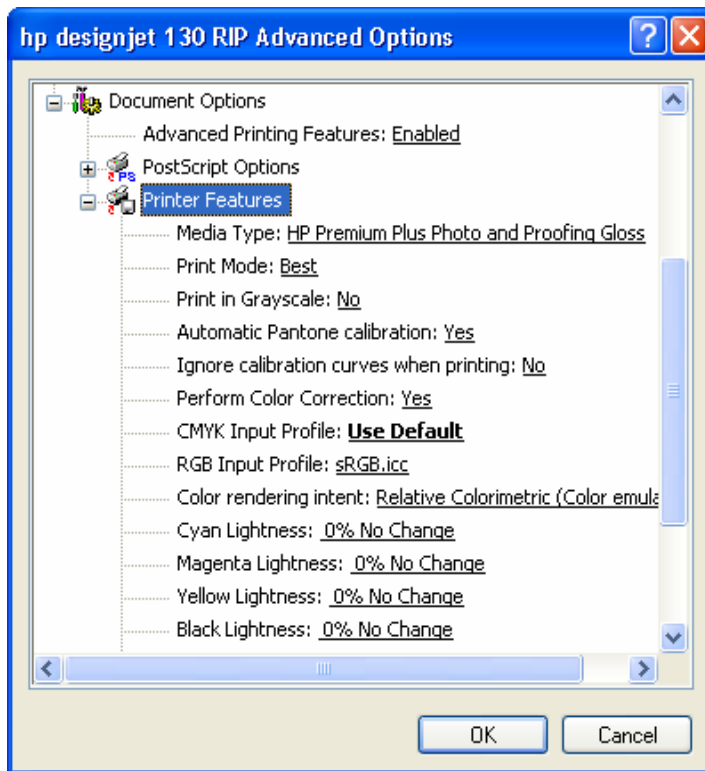
- Click **Open**.
6. So that you get a good display select the image, and then, **Item menu > Preview Resolution: Full Resolution**.
 7. QuarkXPress print settings, **File menu > Print...**:
 - **Printer:** Select the printer (ex. HP Designjet 130 RIP).
 - **Layout tab:** Uncheck **Separations**.
 - **Setup tab:**
 - **Printer Description:** HP Designjet 130 RIP.
 - **Paper size:** Select the paper size of the media loaded on the printer.
 - **Reduce or Enlarge:** Select the scaling factor you need.
 - **Page Position:** Select the page position you need if the image is smaller than the paper size.
 - **Orientation:** Select the orientation of your document on the paper.
 - **Output tab > Print Colors:** Composite CMYK.
 - **Preview tab:** Check the preview of your image on the paper.
 - **Profiles tab > Composite:** Select the press profile.



8. Printer settings, **Properties...** button:

- **Advanced...:**

- **Paper/Output > Paper Size:** Select the paper size you have already selected on the QuarkXPress print dialog box.
- **Document Options > Printer Features:**
 - Select the **Media Type** that is loaded on the printer.
 - **Print Mode:** Best (always calibrated).
 - **Perform Color Correction:** Yes.
 - **CMYK Input Profile:** select the press profile you want to emulate, if you have added and selected it in the RIP, select **Use Default**.
 - **Color rendering intent:** Relative Colorimetric (select Absolute Colorimetric if you want to emulate the white of the paper).



- Click **OK** and **Print**.

For more information on HP Designjet products

www.hp.com/go/designjet

© 2005 Hewlett-Packard Development Company, L.P. The information contained herein is subject to change without notice. The only warranties for HP products and services are set forth in the express warranty statements accompanying such products and services. Nothing herein should be construed as constituting an additional warranty. HP shall not be liable for technical or editorial errors or omissions contained herein.

Adobe Photoshop and PostScript are trademarks of Adobe Systems Incorporated. PANTONE is Pantone, Inc.'s check-standard trademark for color.

Rev. 1.0, 09/2005

