



## Proof a press with CMYK

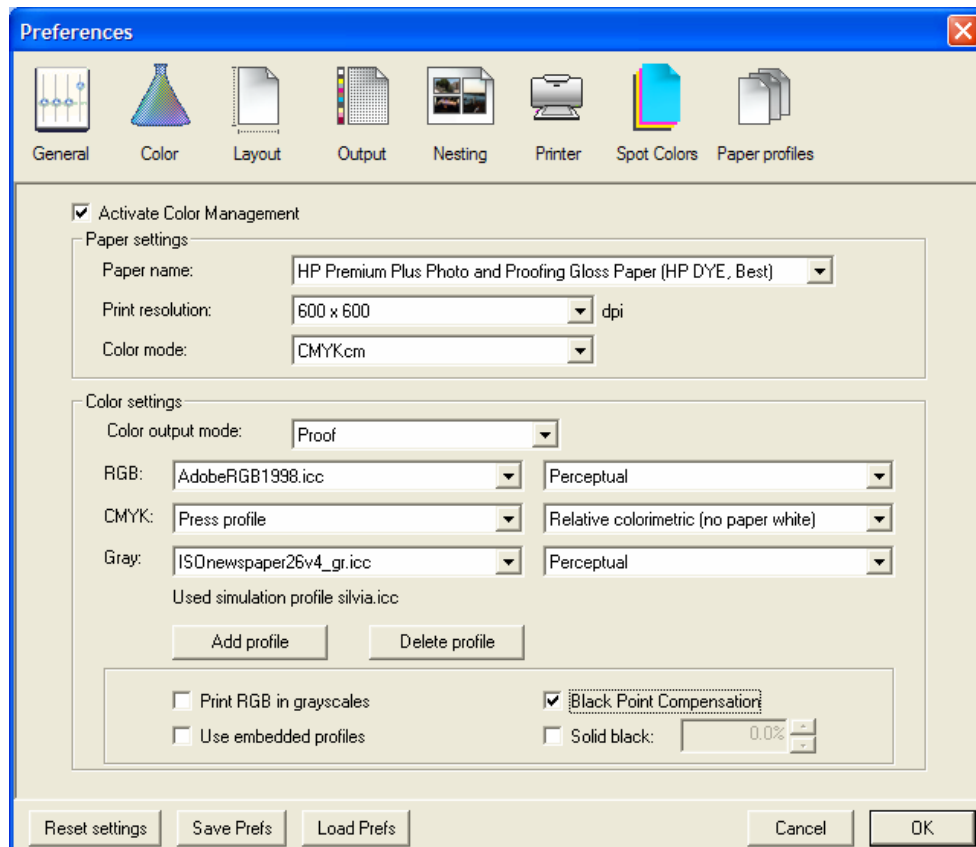
Application: QuarkXPress 6.5

Printer: HP Designjet 30/90/130 series

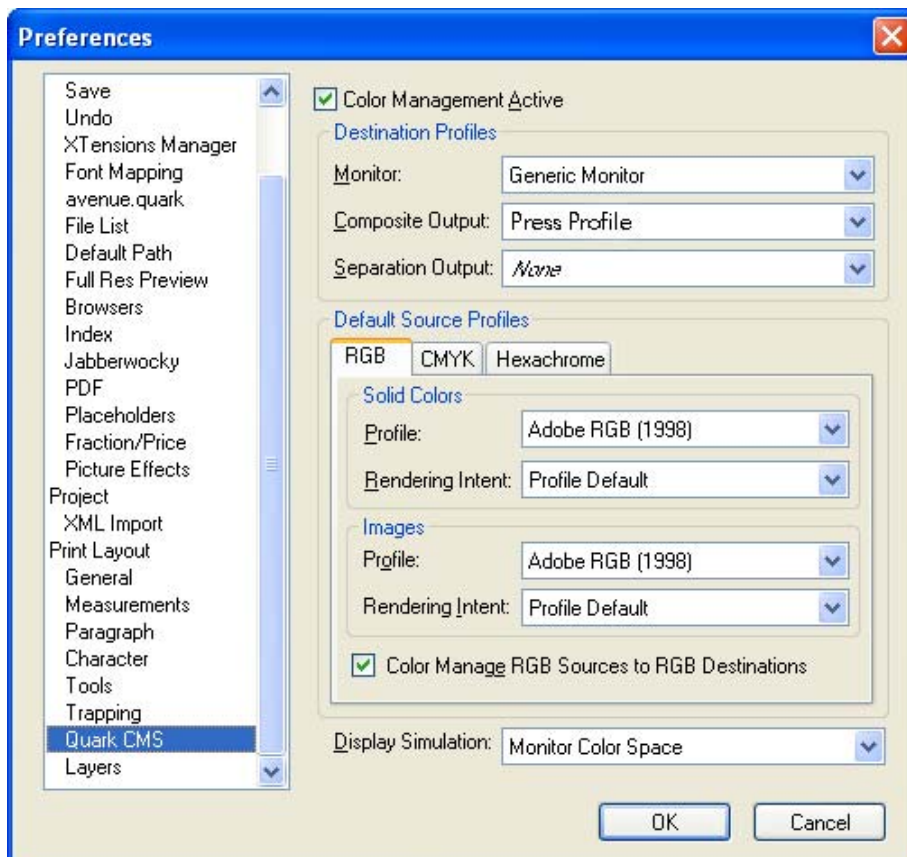
Software: EFI Designer Edition for HP

Operating System: Windows

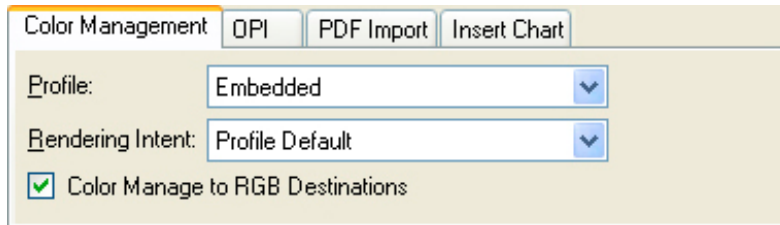
1. First recommendations:
  - See the [Media type functionality & features](#) and choose the most appropriate media.
  - It is essential you have the media type correctly calibrated with the printer and print mode, consult the [Calibrate my printer](#) document.
  - If you need to add color profiles in the application, copy them in the next folder:  
 Windows 98 and Windows ME: C:\WINDOWS\SYSTEM\COLOR.  
 Windows XP: C:\WINDOWS\SYSTEM32\COLOR.  
 Windows 2000 and Windows NT: C:\WINNT\SYSTEM32\COLOR.
2. Open the EFI Designer Edition RIP.
3. EFI Designer Edition RIP settings, **Preferences**:
  - **General:** In order to see the print preview in the RIP before printing, uncheck the **Automatic start printing after spooling** checkbox.
  - **Color:**
    - Check the **Active Color Management** checkbox.
    - **Paper name:** Select the paper type that is loaded on the printer (always calibrated) and “Best” print quality.
    - **Print resolution:** 600 x 600.
    - **Color output mode:** Proof.
    - **CMYK:** Select the press profile you want to emulate. If it is not there, click the **Add profile** button and browse to it.  
 Select the **Relative Colorimetric** intent (select **Absolute Colorimetric** if you want to emulate the white of the paper).



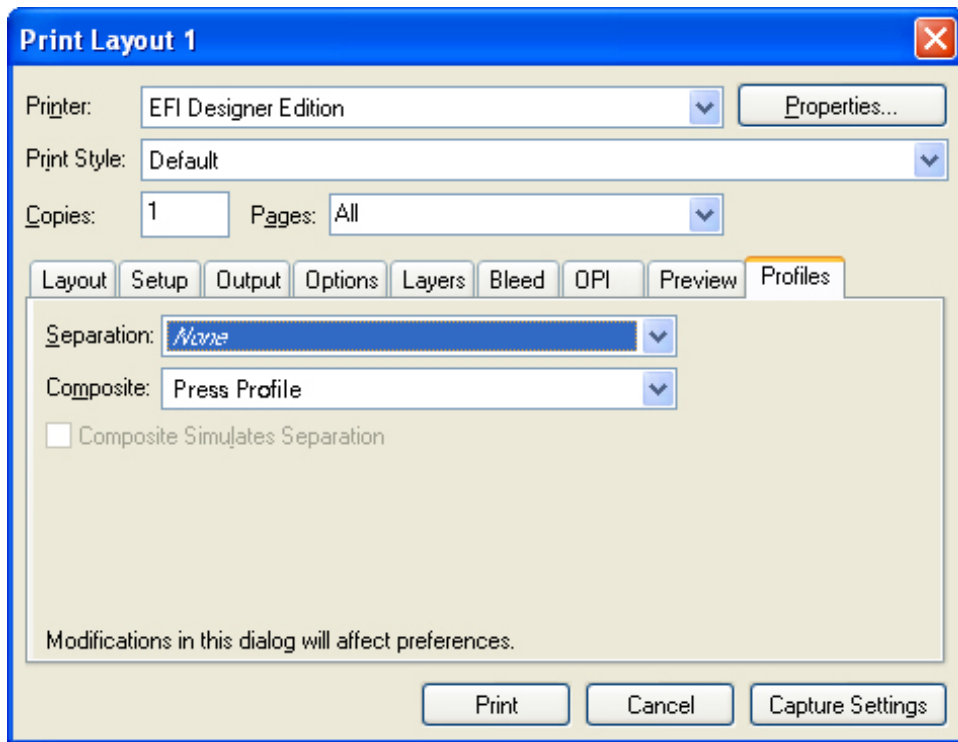
- Click **OK**.
4. Open QuarkXpress.
  5. Configure the color **Preferences, Edit menu > Preferences... > Quark CMS** (left hand menu):
    - Check the **Color Management Active** checkbox.
    - **Destination Profiles:**
      - **Monitor:** If you want to get a good display, profile your monitor ([how to profile my monitor](#)) and use the setting here to select the monitor profile.
      - **Composite Output:** Select the press profile you want to emulate.
    - **Default Source Profiles > RGB** tab:
      - **Profile** (Solid Colors/Images): Adobe RGB (1998).
      - **Rendering Intent** (Solid Colors/Images): Profile Default.
      - Check **Color Manage RGB Sources to RGB Destinations**.
    - **Default Source Profiles > CMYK** tab:
      - **Profile** (Solid Colors/Images): SWOP Press.
      - **Rendering Intent** (Solid Colors/Images): Profile Default.
      - Check **Color Manage CMYK Sources to CMYK Destinations**.
    - **Display simulation:** Select **Monitor Color Space** to get an accurate display of your document, select **Composite Output Color Space** to emulate the press on the monitor (you must have the monitor profile correctly selected on **Monitor** to get a good result).



- Click **OK**.
6. Open your project, **File menu > Open...**, and browse it. To insert images, draw a box with the **Rectangle Picture Box** and insert the image, **File menu > Get Picture...**:
- Browse the file.
  - **Color Management** tab:
    - **Profile:** If the image has an Embedded profile, preserve it, if not, select Default.
    - **Rendering Intent:** Profile Default.
    - Check **Color Manage to RGB/CMYK Destinations**.



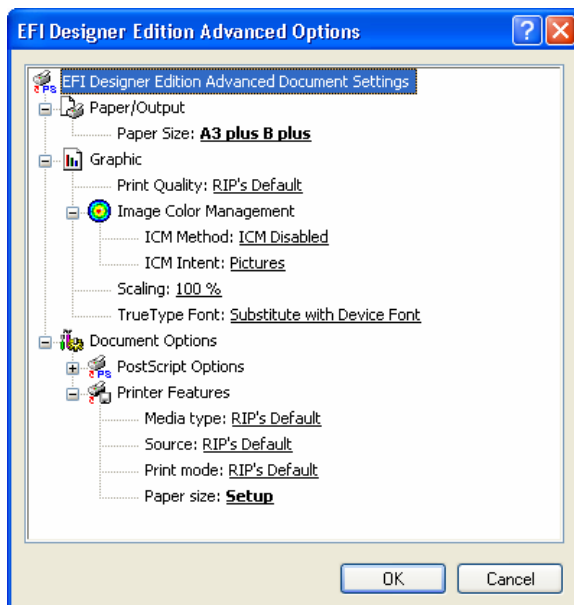
- Click **Open**.
7. So that you get a good display select the image, and then, **Item menu > Preview Resolution: Full Resolution**.
8. QuarkXPress print settings, **File menu > Print...**:
- **Printer:** Select the printer (ex. EFI Designer Edition).
  - **Layout tab:** Uncheck **Separations**.
  - **Setup tab:**
    - **Printer Description:** EFI Software Printer.
    - **Paper size:** Select the paper size of the media loaded on the printer.
    - **Reduce or Enlarge:** Select the scaling factor you need.
    - **Page Position:** Select the page position you need if the image is smaller than the paper size.
    - **Orientation:** Select the orientation of your document on the paper.
  - **Output tab > Print Colors:** Composite CMYK.
  - **Preview tab:** Check the preview of your image on the paper.
  - **Profiles tab > Composite:** Select the press profile.



9. Printer settings, **Properties...** button:

- **Advanced...:**

- **Paper/Output > Paper Size:** Select the paper size you have already selected on the QuarkXPress print dialog box.
- **Document Options > Printer Features:**
  - **Paper Size:** Setup
  - Select **RIP's Default** on the others settings.



- Click **OK** and **Print**.

10. To see the print preview go to the EFI Designer Edition RIP, select the file you have just sent from QuarkXPress and press the **Preview** button, if it is ready click **Print**.

For more information on HP Designjet products

[www.hp.com/go/designjet](http://www.hp.com/go/designjet)

© 2005 Hewlett-Packard Development Company, L.P. The information contained herein is subject to change without notice. The only warranties for HP products and services are set forth in the express warranty statements accompanying such products and services. Nothing herein should be construed as constituting an additional warranty. HP shall not be liable for technical or editorial errors or omissions contained herein.

Adobe Photoshop and PostScript are trademarks of Adobe Systems Incorporated. PANTONE is Pantone, Inc.'s check-standard trademark for color.

Rev. 1.0, 09/2005

