



Proof a press with Pantone Colors.

Application: Adobe Illustrator CS

Printer: HP Designjet 30/90/130 series

Software: EFI Designjet Edition for HP

Operating System: Windows

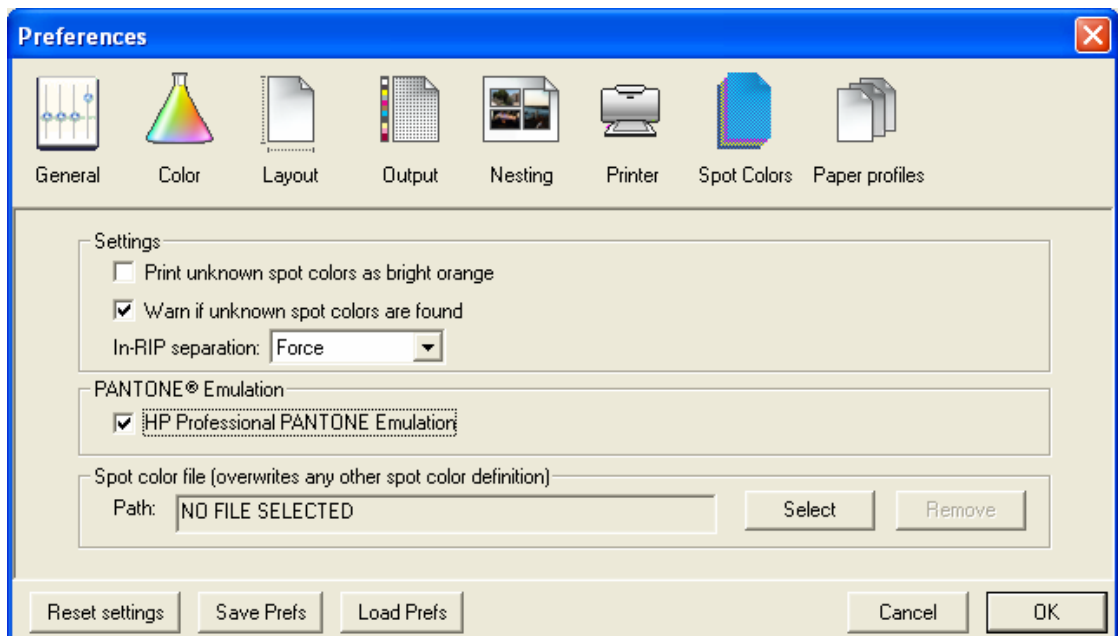
1. First recommendations:

- Some paper types are better than others for proofing, see the [Media type functionality & features](#) and choose the most appropriate media.
- It is essential to have the media type correctly calibrated with the printer and print mode, consult the [Calibrate my printer](#) section.

2. Open the EFI Designer Edition RIP.

3. When using a calibrated printer (with the HP Professional Pantone Emulation feature) the Pantone colors will act as a spot color and will be affected neither by the application color settings nor by the RIP color settings. In this case, configure the application and the RIP color settings for the other objects or images you have in the document, the following instructions are for the Pantone colors emulation only. EFI Designer Edition RIP settings, **Preferences**:

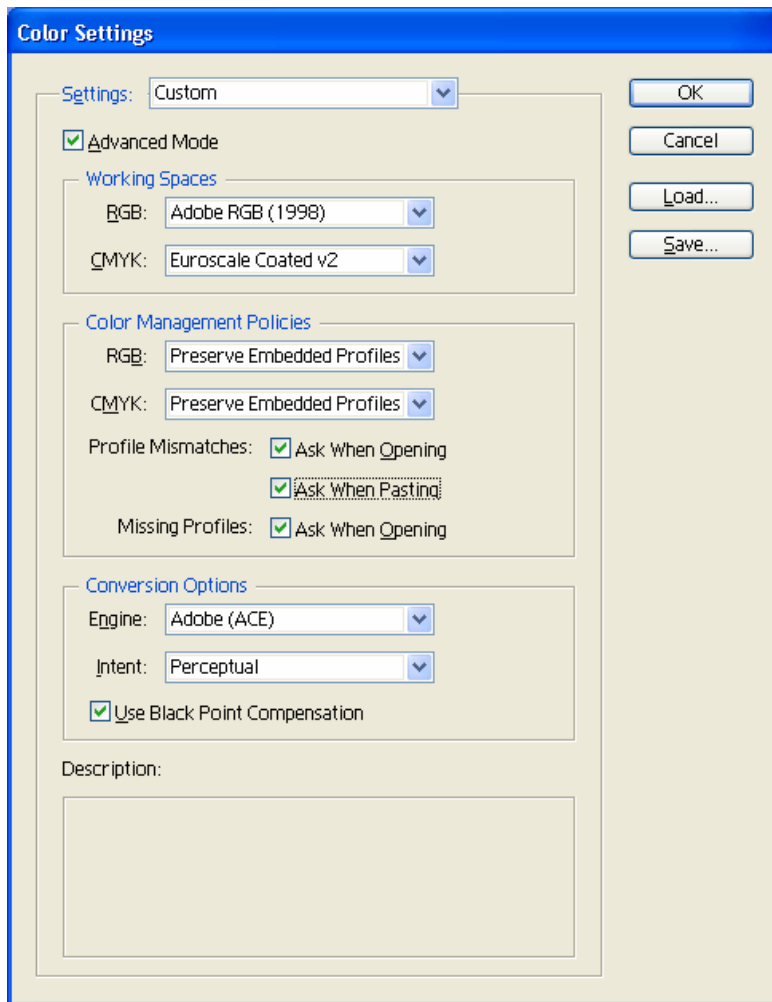
- **Color:**
 - **Paper name:** Select the paper type that is loaded on the printer (always calibrated) and “Best” print quality.
 - **Print resolution:** 600 x 600.
- **Spot Colors:**
 - **In-RIP Separations:** Force
 - Check **HP Professional Pantone Emulation** (see [Graphic Arts](#) section for more information about this technology).



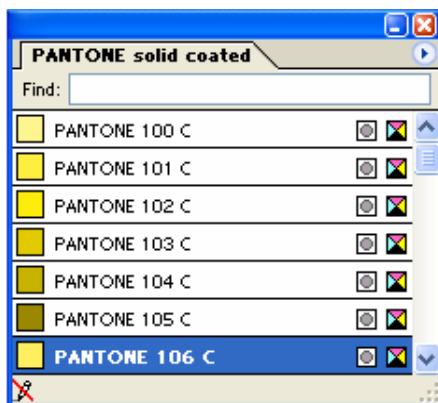
- Click **OK**.

4. Open Adobe Illustrator CS.

5. In Illustrator go to **Color Settings, Edit menu > Color Settings...**: configure it for the other objects or images you have in the document.

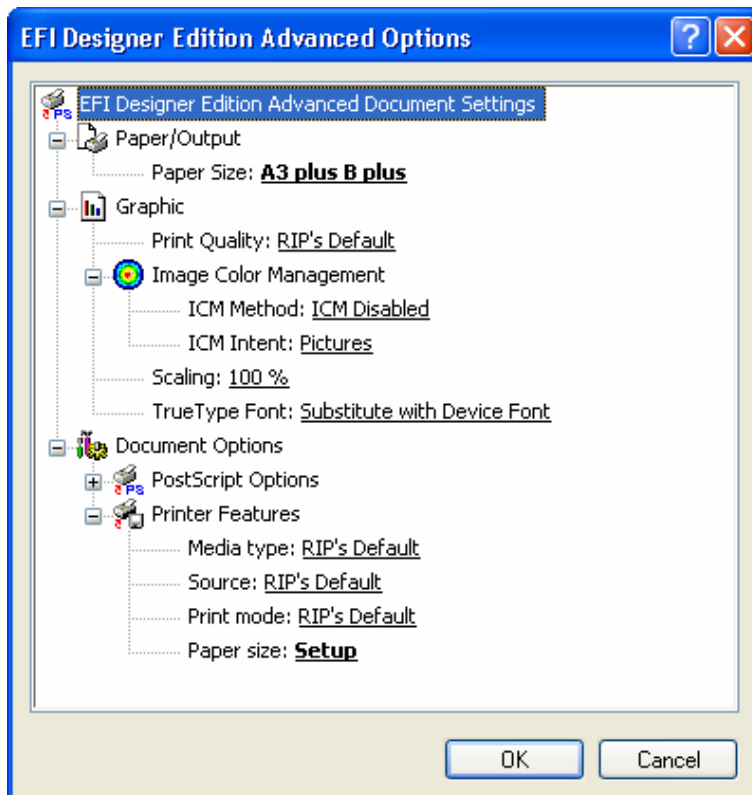


6. Open an existing document, **File menu -> Open...** or create a new file, **File menu -> New....**
7. Make sure to have configured the **Document Setup** appropriately for you document, **File menu > Document Setup...**
8. Select your Pantone Color and draw/paint your image, you can select it in the Swatch Library, **Window menu > Swatch Libraries > PANTONE solid coated.**

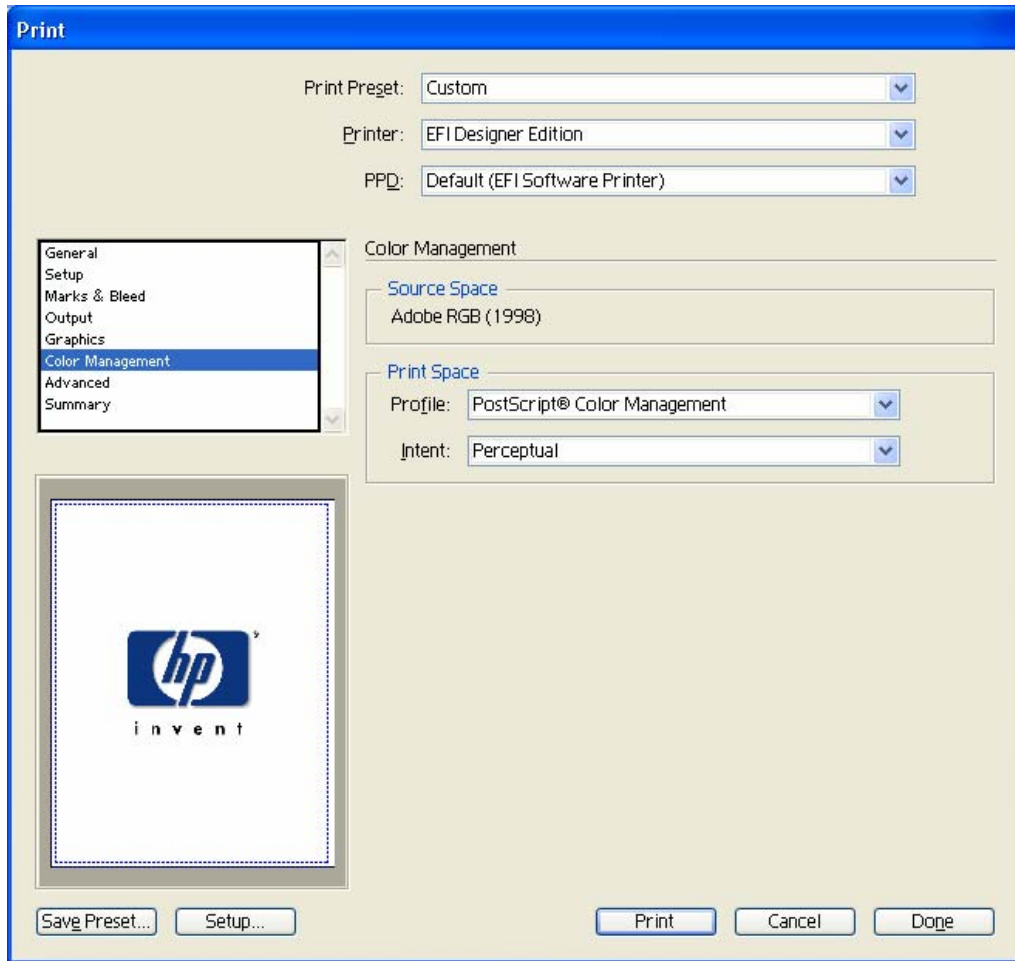


9. Printer settings, **File menu > Print... > Setup...** button:
 - **Select Printer...:** Select the printer (ex. EFI Designer Edition).
 - **Preferences:**

- **Layout** tab:
 - **Orientation:** Select the orientation of your document on the paper.
- **Advanced...:**
 - **Paper/Output > Paper Size:** Select the paper size of the media loaded on the printer.
 - **Document Options > Printer Features:**
 - **Paper Size:** Setup
 - Select **RIP's Default** on the others settings.



- Click **OK** until the Illustrator **Print** dialog box.
10. Adobe Illustrator **Print...** settings:
- **General** (left hand menu):
 - **Media > Size:** Defined by Driver.
 - **Options:** Select the scaling option you need.
 - **Output** (left hand menu):
 - **Mode:** Composite.
 - **Color Management** (left hand menu): configure it for the other objects or images you have in the document.



- Click **Print**.

For more information on HP Designjet products

www.hp.com/go/designjet

© 2005 Hewlett-Packard Development Company, L.P. The information contained herein is subject to change without notice. The only warranties for HP products and services are set forth in the express warranty statements accompanying such products and services. Nothing herein should be construed as constituting an additional warranty. HP shall not be liable for technical or editorial errors or omissions contained herein.

Adobe Photoshop and PostScript are trademarks of Adobe Systems Incorporated. PANTONE is Pantone, Inc.'s check-standard trademark for color.

Rev. 1.0, 09/2005

