



Proof a press with Pantone Colors

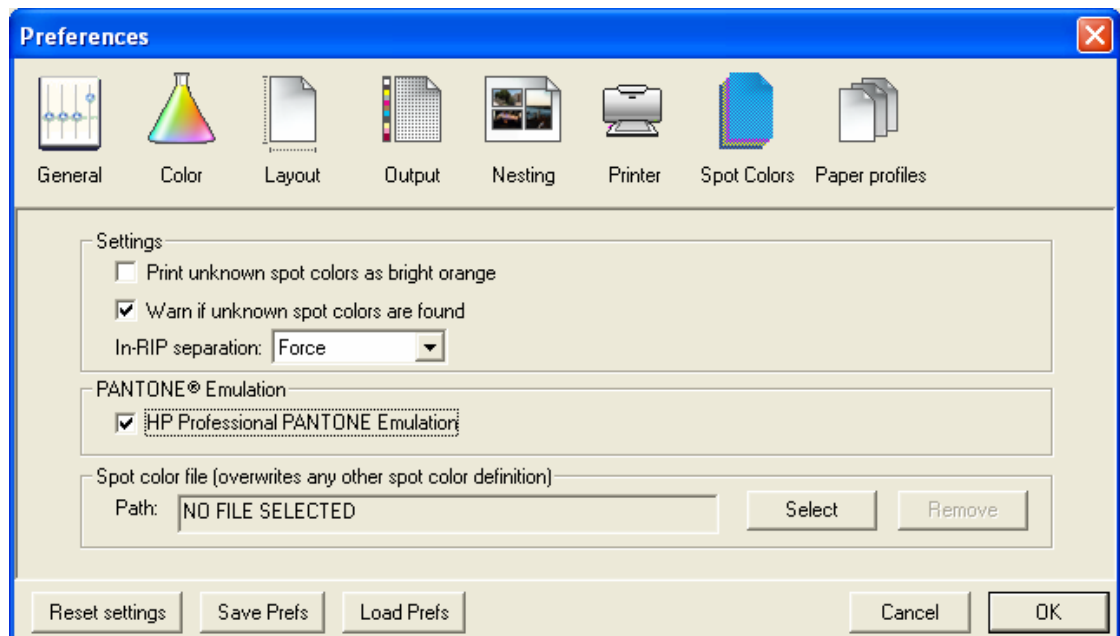
Application: Adobe InDesign CS

Printer: HP Designjet 30/90/130 series

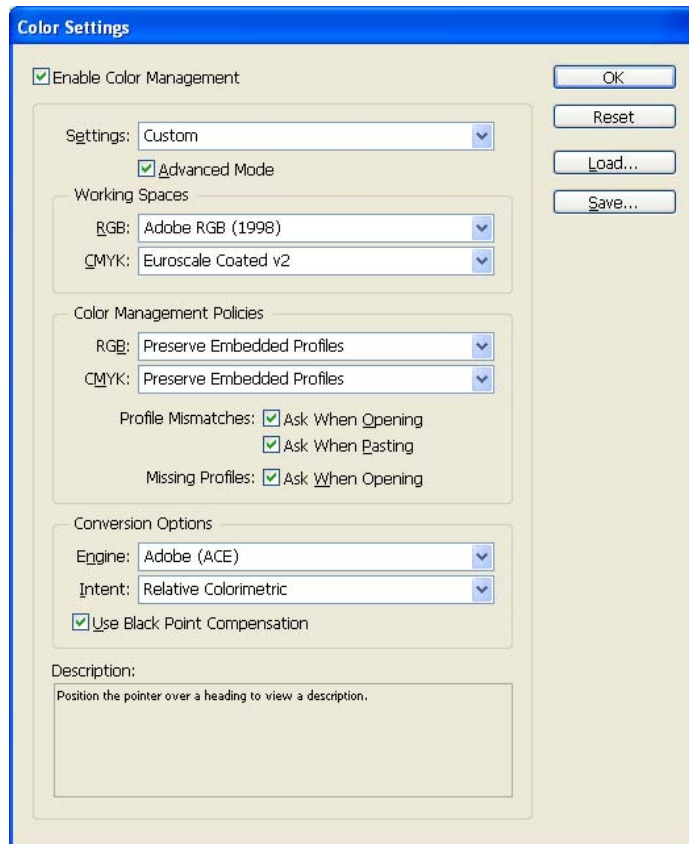
Software: EFI Designer Edition for HP

Operating System: Windows

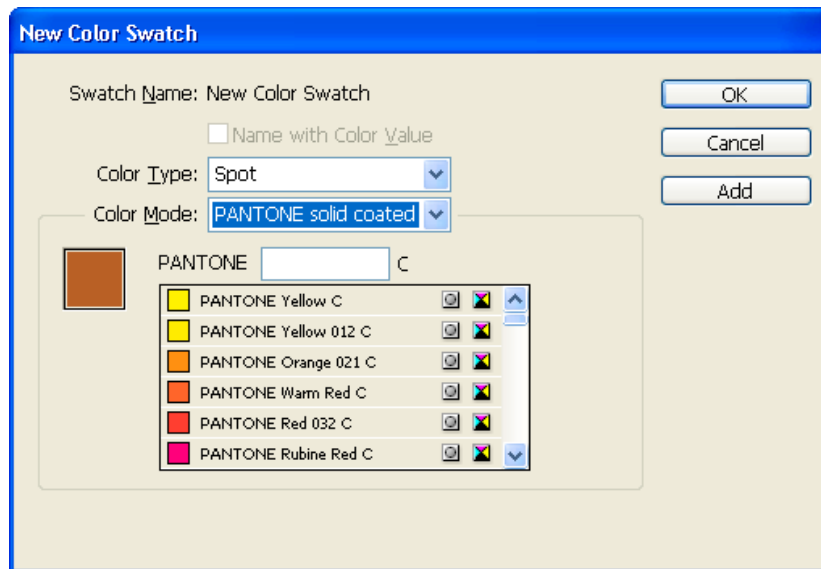
1. First recommendations:
 - See the [Media type functionality & features](#) and choose the most appropriate media.
 - It is essential to have the media type correctly calibrated with the printer and print mode, consult the [Calibrate my printer](#) document.
2. Open the EFI Designer Edition RIP.
3. When using a calibrated printer (with the HP Professional Pantone Emulation feature) the Pantone colors will act as a spot color and will not be affected by the application color settings or by the RIP color settings. Then, configure the application and the RIP color settings for the other objects or images you have in the document, the following instructions are for the Pantone colors emulation only. EFI Designer Edition RIP settings, **Preferences**:
 - **Color:**
 - **Paper name:** Select the paper type that is loaded on the printer (always calibrated) and "Best" print quality.
 - **Print resolution:** 600 x 600.
 - **Spot Colors:**
 - **In-RIP Separations:** Force
 - Check **HP Professional Pantone Emulation** (see [Graphic Arts](#) section for more information about this technology).



- Click **OK**.
4. Open Adobe InDesign CS.
 5. InDesign **Color Settings, Edit menu > Color Settings...**: configure this for the other objects or images you have in the document.



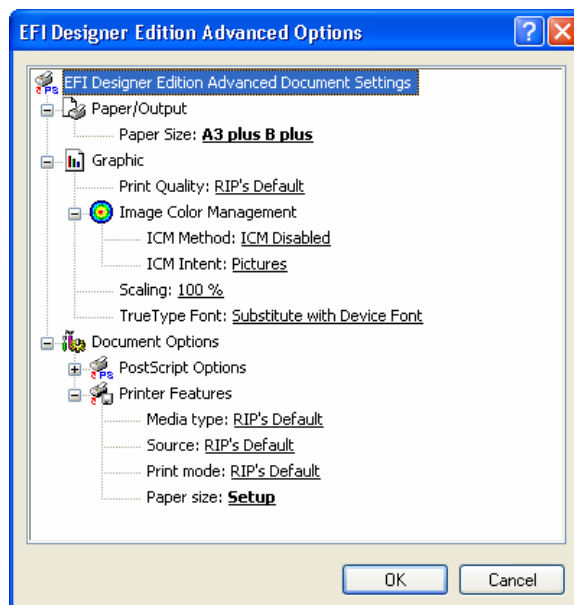
6. Open an existing document, **File menu -> Open...** or create a new file, **File menu -> New....**
7. So that you get a good display select a High Quality Display, **View menu > Display performance > High Quality Display.**
8. Make sure you have configured the **Document Setup** appropriately for your document, **File menu > Document Setup....**
9. Select your Pantone Color and draw/paint your image, you can select it in the Swatches window, **Window menu > Swatches**, click on the left corner arrow and select **New Color Swatch...:**
 - **Color Type:** Spot.
 - **Color Mode:** Pantone solid coated.



- Select the Pantone Color you want and click **OK**, it will appear in the **Swatches** window.

10. Printer settings, **File menu > Print... > Setup...** button:

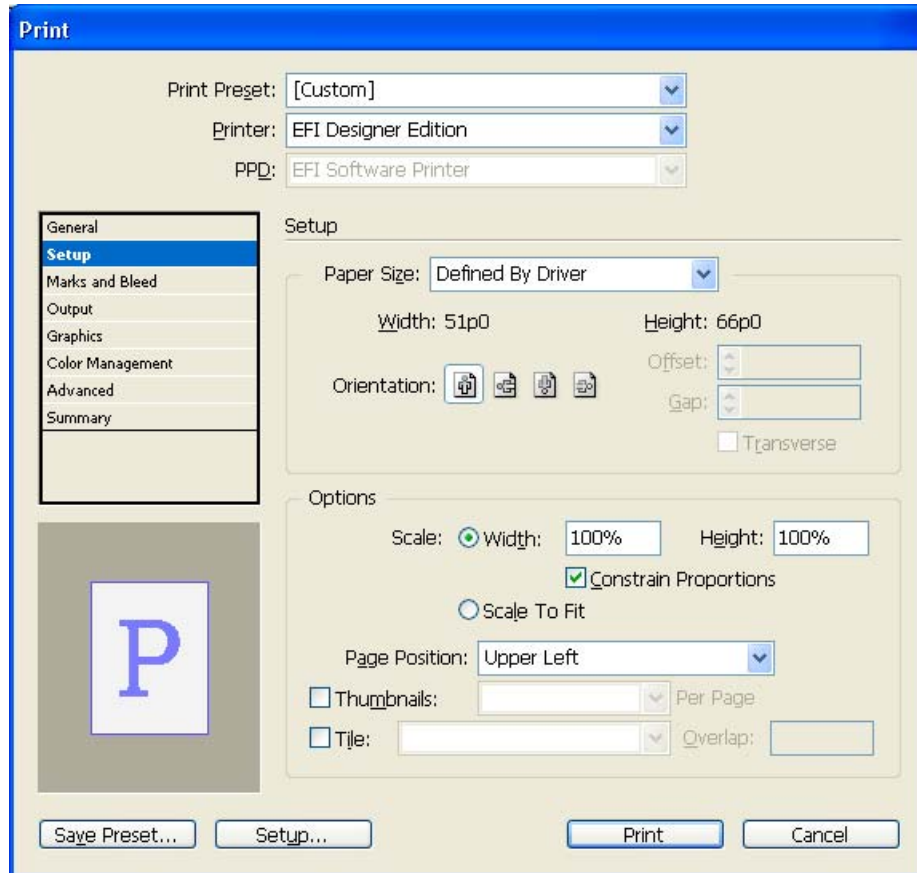
- **Select Printer...:** Select the printer (ex. EFI Designer Edition).
- **Preferences:**
 - **Layout** tab:
 - **Orientation:** Select the orientation of your document on the paper.
 - **Advanced...** button:
 - **Paper/Output > Paper Size:** Select the paper size of the media loaded on the printer.
 - **Document Options > Printer Features:**
 - **Paper Size:** Setup
 - Select **RIP's Default** on the others settings.



- Click **OK** until the InDesign **Print** dialog box.

11. Adobe InDesign **Print...** settings:

- **Setup** (left hand menu):
 - **Paper Size:** Defined by Driver.
 - **Options:** Select the scaling option you need.
- **Output** and **Color Management** (left hand menu): configure them for the other objects or images you have in the document.



- Click **Print**.

For more information on HP Designjet products

www.hp.com/go/designjet

© 2005 Hewlett-Packard Development Company, L.P. The information contained herein is subject to change without notice. The only warranties for HP products and services are set forth in the express warranty statements accompanying such products and services. Nothing herein should be construed as constituting an additional warranty. HP shall not be liable for technical or editorial errors or omissions contained herein.

Adobe Photoshop and PostScript are trademarks of Adobe Systems Incorporated. PANTONE is Pantone, Inc.'s check-standard trademark for color.

Rev. 1.0, 09/2005

