



## Proof a press with Pantone colors

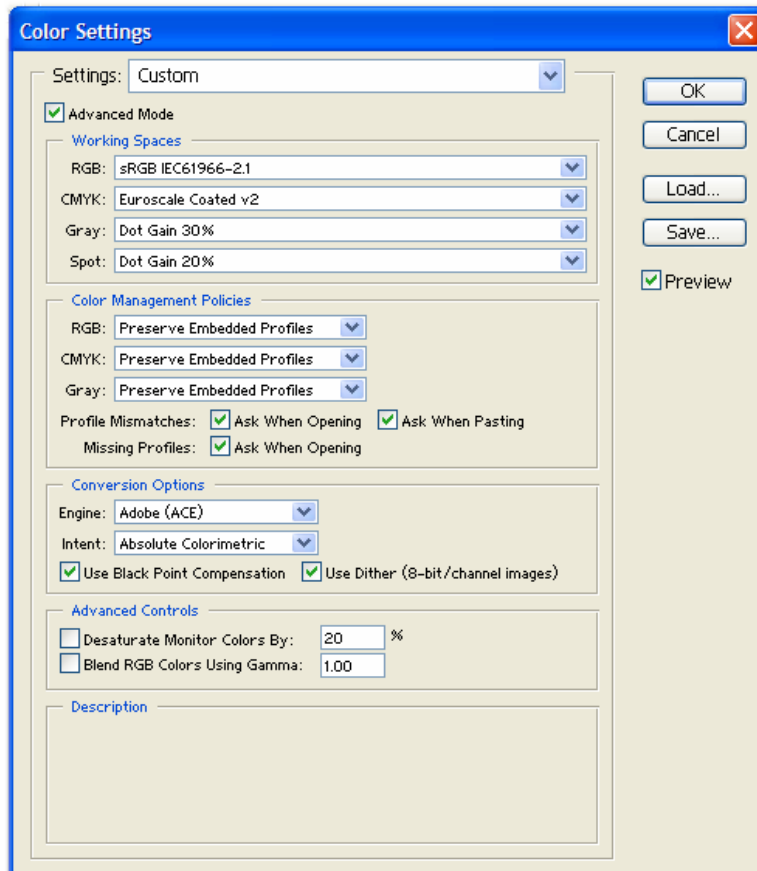
Application: Adobe Photoshop CS

Printer: HP Designjet 30/90/130 series

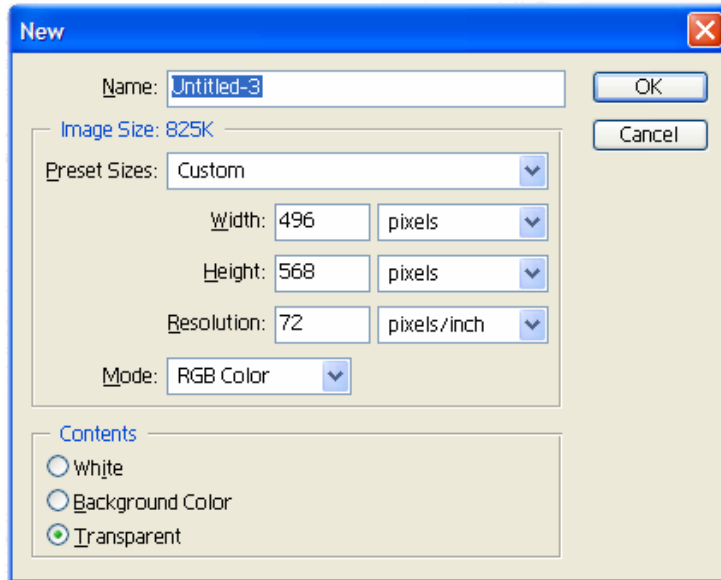
Software: HP Driver

Operating System: Windows

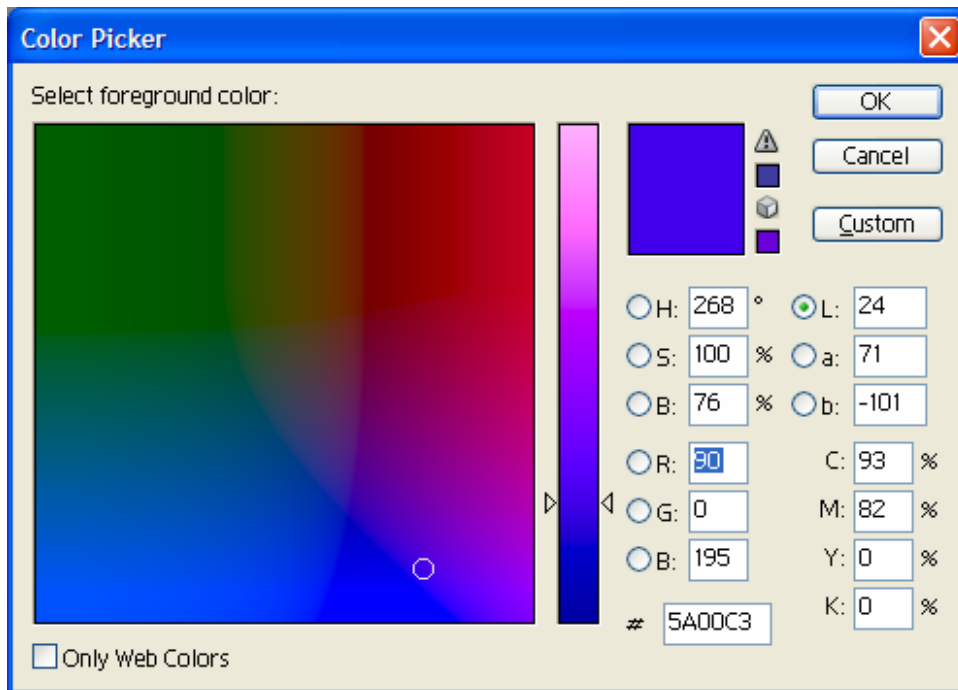
1. First recommendations:
  - Some paper types are better than others for proofing, see the [Media type functionality & features](#) and choose the most appropriate media.
  - It is essential to have the media type correctly calibrated with the printer and print mode, consult the [Calibrate my printer](#) document.
2. Open Adobe Photoshop CS.
3. Configure the **Color Settings, Edit menu > Color Settings...**:
  - Make sure that the **Advance Mode** check box is ticked.
  - **Working Space > RGB**: sRGB IEC61966-2.1.
  - **Conversion Options > Intent**: Absolute Colorimetric.



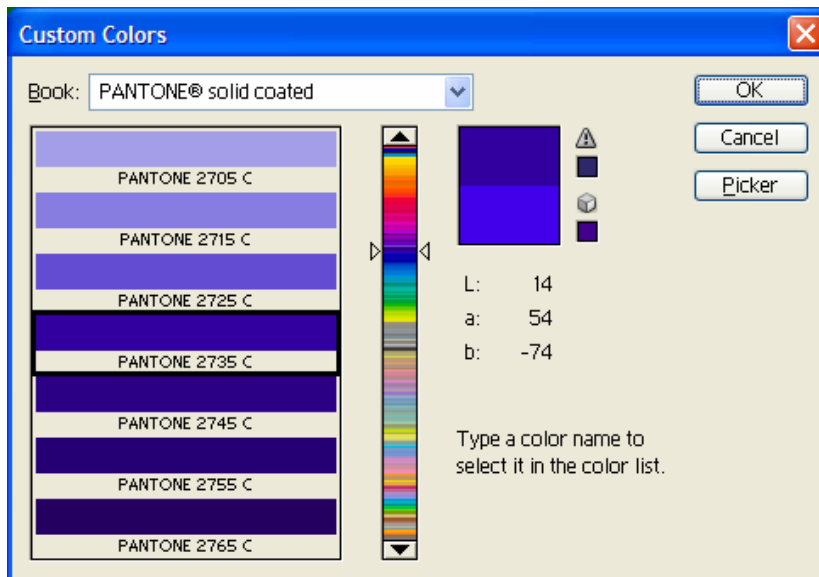
4. Create a new file in an RGB color mode, **File menu -> New...**:
  - **Width, Height and Resolution**: select the image size and resolution you need.
  - **Mode**: RGB Color



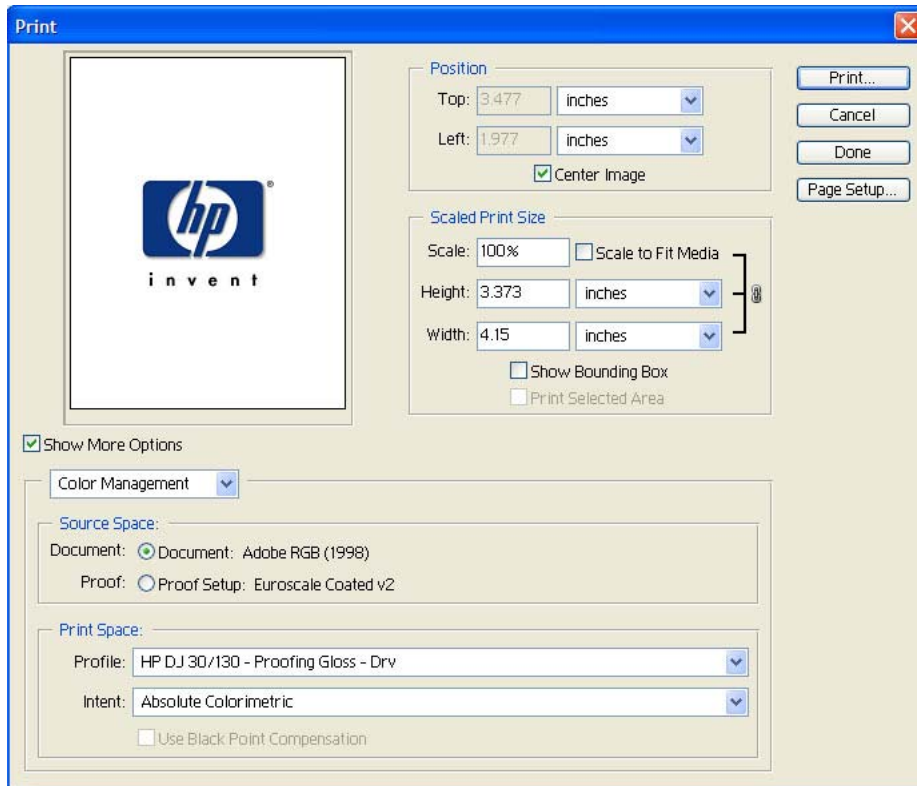
5. Select your Pantone Color and draw/paint your image:
  - Double-click on the **color box** of the **Tools** window to open the **Color Picker**:



- Select **Custom** and open the **Pantone Solid Coated** book, now you can select the desired Pantone color.



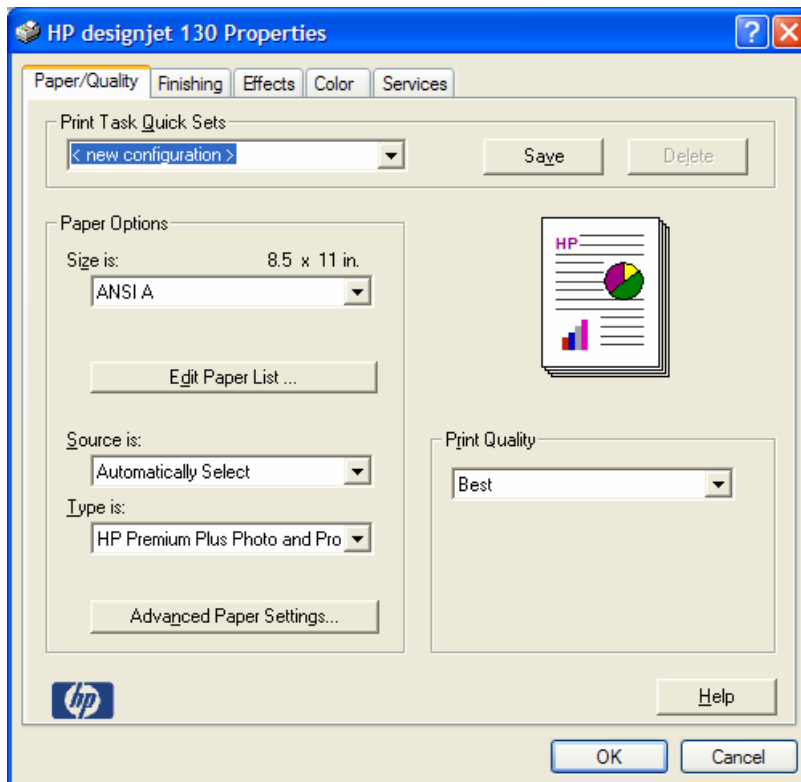
- Click **OK**. Now you can paint/draw.
6. Adobe Photoshop **Print with Preview...** settings, **File menu > Print with Preview...**:
- **Page Setup:**
    - **Printer...**: Select the printer (ex. HP Designjet 130).
    - Click **OK**.
    - **Paper Size**: Select the paper size of the media loaded on the printer.
    - **Orientation**: Select the orientation of your image on the paper.
    - Click **OK**.
  - Set the **Position** and the **Scaled Print Size** you need.
  - Check **Show More Options**.
  - Select the **Color Management** tab:
    - **Source Space**: Document.
    - **Print Space > Profile**: Select the profile of the printer and media type you will use to print.
    - **Print Space > Intent**: Absolute colorimetric.



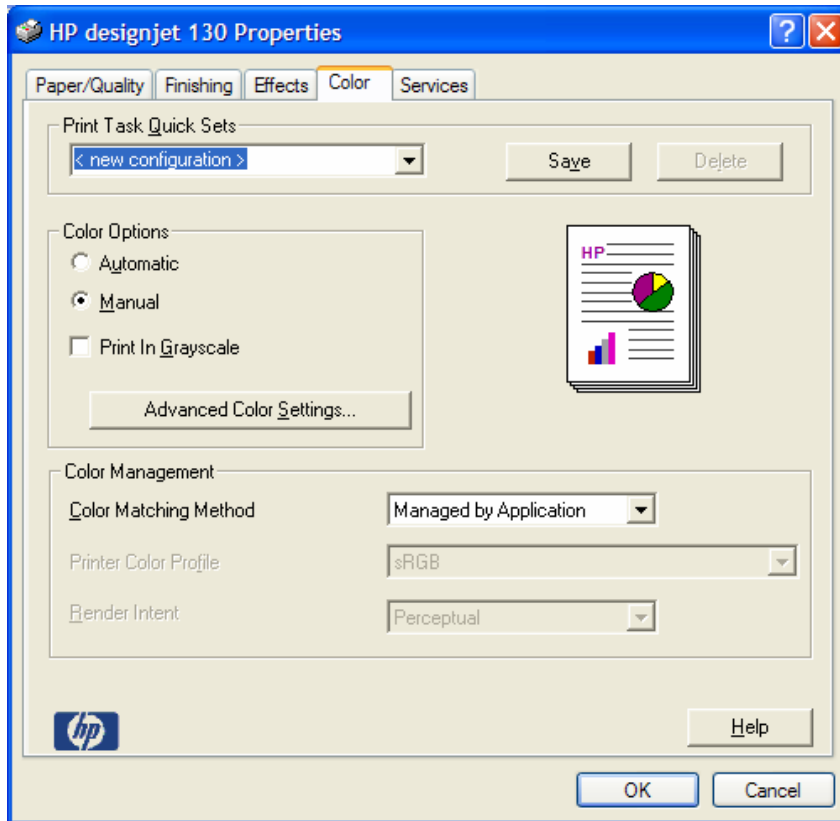
7. Driver Settings, **Print... > Properties:**

- **Paper/Quality** tab:

- **Type is:** Select the media type that is loaded on the printer (same settings selected in Photoshop Print Space Profile, always calibrated).
- **Print Quality:** Best.



- **Color** tab:
  - **Color Options:** Manual.
  - **Color Matching Method:** Managed by Application.



- Click **OK** twice.

For more information on HP Designjet products

[www.hp.com/go/designjet](http://www.hp.com/go/designjet)

© 2005 Hewlett-Packard Development Company, L.P. The information contained herein is subject to change without notice. The only warranties for HP products and services are set forth in the express warranty statements accompanying such products and services. Nothing herein should be construed as constituting an additional warranty. HP shall not be liable for technical or editorial errors or omissions contained herein.

Adobe Photoshop and PostScript are trademarks of Adobe Systems Incorporated. PANTONE is Pantone, Inc.'s check-standard trademark for color.

Rev. 1.0, 09/2005

