



## Proof a press with Pantone Colors

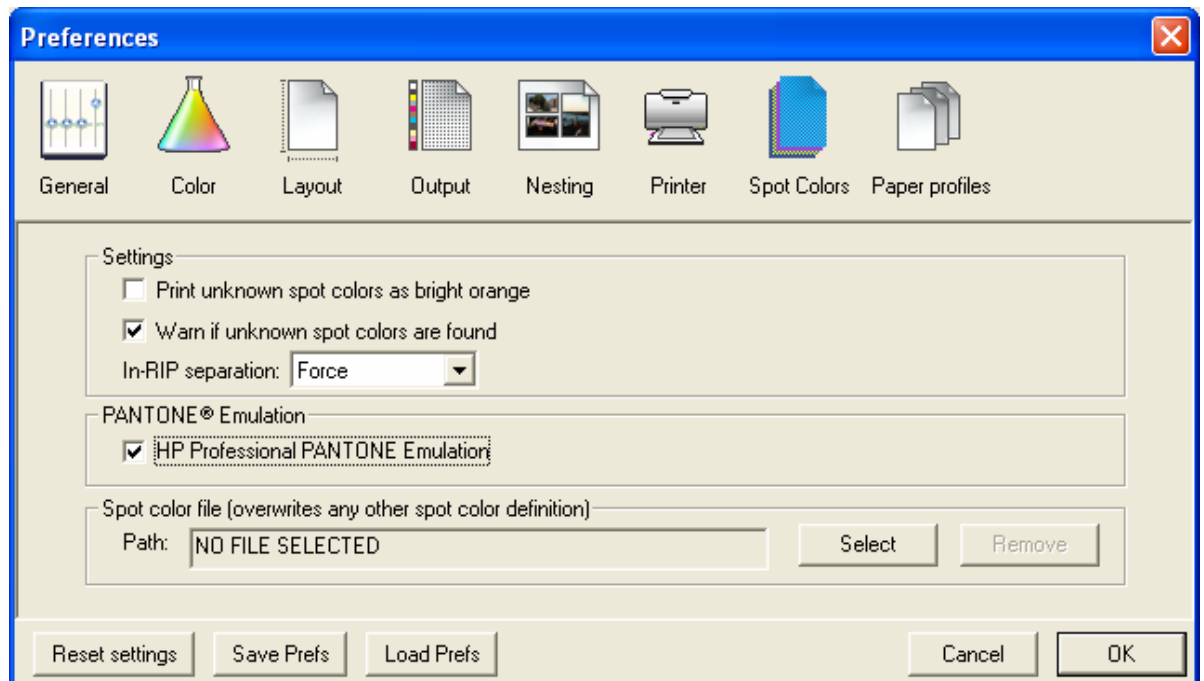
Application: QuarkXPress 6.5

Printer: HP Designjet 30/90/130 series

Software: EFI Designer Edition for HP

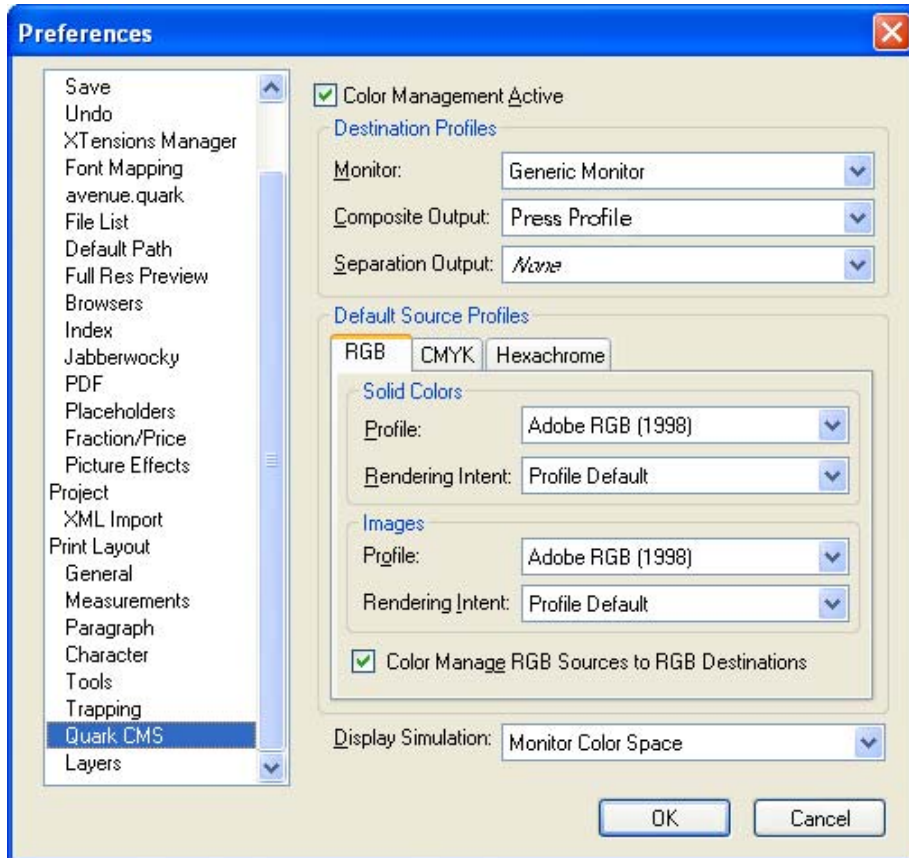
Operating System: Windows

1. First recommendations:
  - See the [Media type functionality & features](#) and choose the most appropriate media.
  - It is essential that you have the media type correctly calibrated with the printer and print mode, consult the [Calibrate my printer](#) document.
  - If you need to add color profiles in the application, copy them in the next folder:  
*Windows 98 and Windows ME:* C:\WINDOWS\SYSTEM\COLOR.  
*Windows XP:* C:\WINDOWS\SYSTEM32\COLOR.  
*Windows 2000 and Windows NT:* C:\WINNT\SYSTEM32\COLOR.
2. Open the EFI Designer Edition RIP.
3. When using a calibrated printer (with the HP Professional Pantone Emulation feature) the Pantone colors will act as a spot color and will not be affected by the application color settings or by the RIP color settings. Then, configure the application and the RIP color settings for the other objects or images you have in the document, the following instructions are for the Pantone colors emulation only. EFI Designer Edition RIP settings, **Preferences**:
  - **General:** In order to see the print preview in the RIP before printing, uncheck the **Automatic start printing after spooling** checkbox.
  - **Color:**
    - **Paper name:** Select the paper type that is loaded on the printer (always calibrated) and “Best” print quality.
    - **Print resolution:** 600 x 600.
  - **Spot Colors:**
    - **In-RIP Separations:** Force
    - Check **HP Professional Pantone Emulation** (see [Graphic Arts](#) section for more information about this technology).

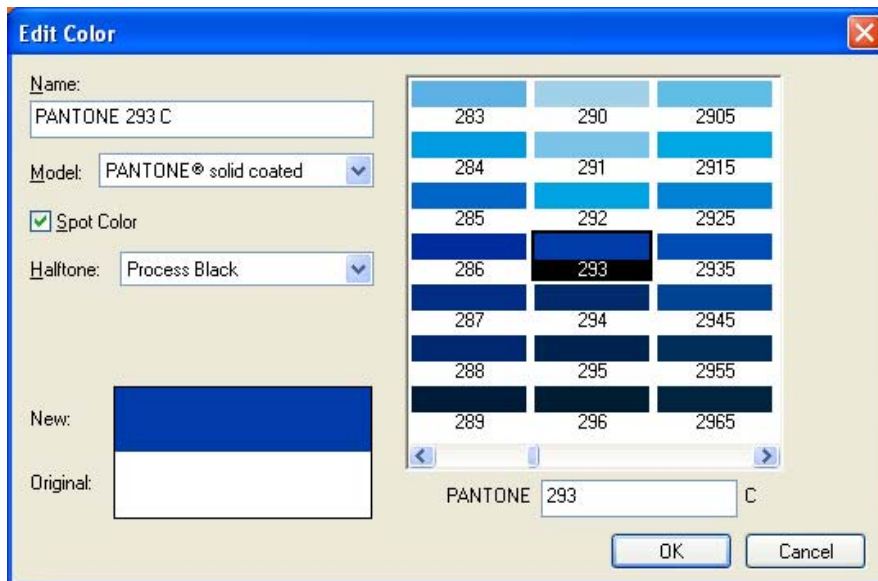


- Click **OK**.
4. Open QuarkXPress.

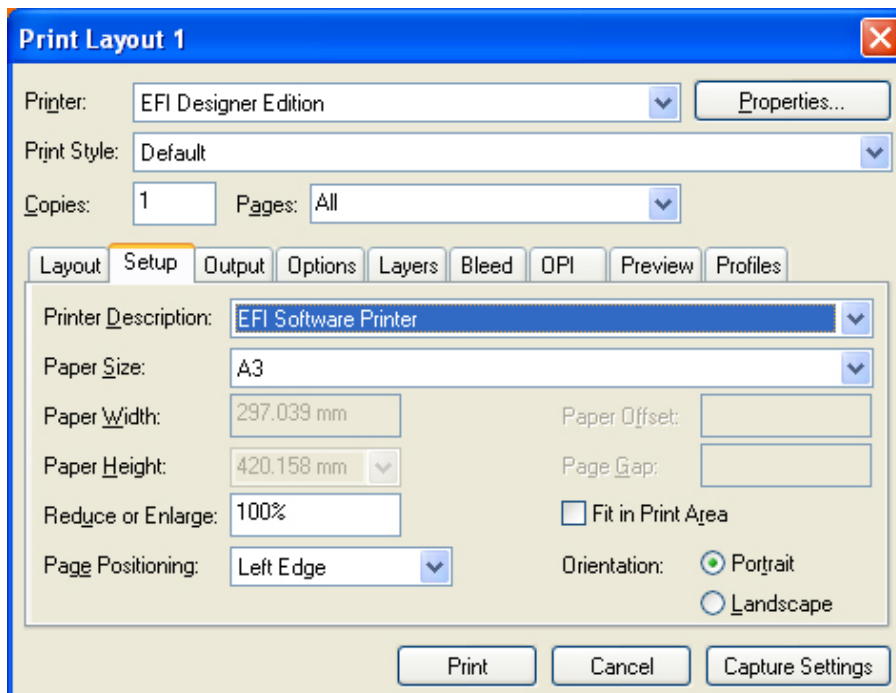
5. QuarkXPress color **Preferences, Edit menu > Preferences... > Quark CMS** (left hand menu): configure this for the other objects or images you have in the document.



- Click **OK**.
6. Open an existing project, **File menu > Open...** or create a new one, **File menu > New...**
  7. So that you get a good display of your images select them, and then, **Item menu > Preview Resolution: Full Resolution**.
  8. Select your Pantone Color and draw/paint your image, you can select it in the Colors window, **Edit menu > Colors... > New...:**
    - **Model:** Pantone® solid coated.
    - Select the Pantone color from the list.
    - Check the **Spot Color** checkbox.



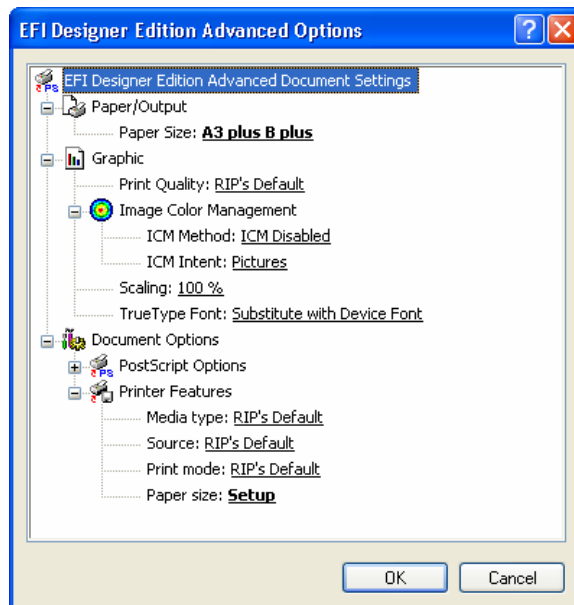
- Click **Ok** and **Save**.
9. QuarkXPress print settings, **File menu > Print...**:
- **Printer:** Select the printer (ex. EFI Designer Edition).
  - **Layout tab:** Uncheck **Separations**.
  - **Setup tab:**
    - **Printer Description:** EFI Software Printer.
    - **Paper size:** Select the paper size of the media loaded on the printer.
    - **Reduce or Enlarge:** Select the escalation factor you need.
    - **Page Position:** Select the page position you need if the image is smaller than the paper size.
    - **Orientation:** Select the orientation of your document on the paper.



- **Output tab > Print Colors:** Composite CMYK.
- **Preview tab:** Check the preview of your image on the paper.
- **Profiles tab > Composite:** configure them for the other objects or images you have in the document.

10. Printer settings, **Properties...** button:

- **Advanced...:**
  - **Paper/Output > Paper Size:** Select the paper size you have already selected on the QuarkXPress print dialog box.
  - **Document Options > Printer Features:**
    - **Paper Size:** Setup
    - Select **RIP's Default** on the others settings.



- Click **OK** and **Print**.

11. To see the print preview go to the EFI Designer Edition RIP, select the file you have just sent from QuarkXPress and press the **Preview** button, if it is ready click **Print**.

For more information on HP Designjet products

[www.hp.com/go/designjet](http://www.hp.com/go/designjet)

© 2005 Hewlett-Packard Development Company, L.P. The information contained herein is subject to change without notice. The only warranties for HP products and services are set forth in the express warranty statements accompanying such products and services. Nothing herein should be construed as constituting an additional warranty. HP shall not be liable for technical or editorial errors or omissions contained herein.

Adobe Photoshop and PostScript are trademarks of Adobe Systems Incorporated. PANTONE is Pantone, Inc.'s check-standard trademark for color.

Rev. 1.0, 09/2005

