



Printing a drawing with correct size, position and color

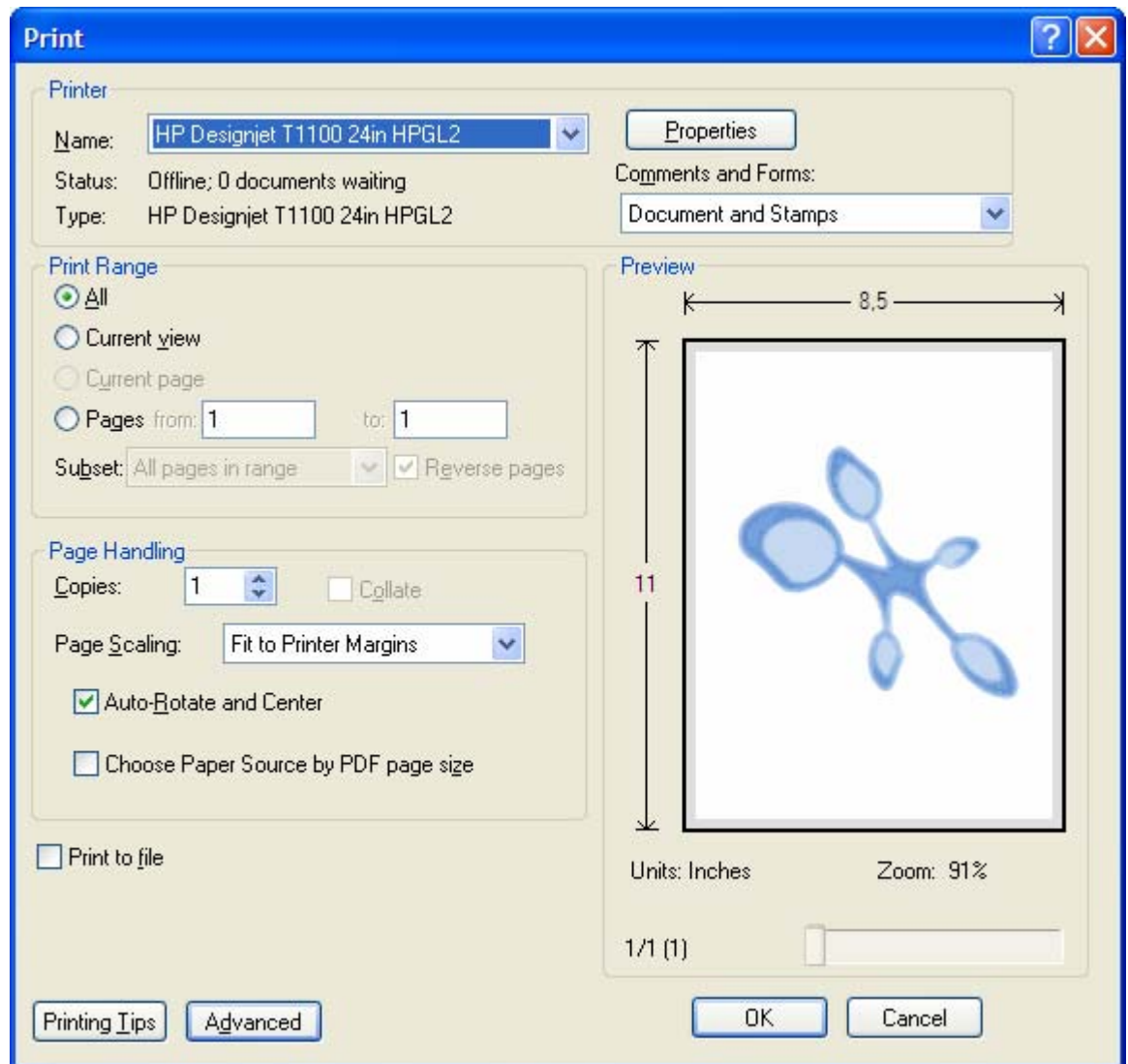
Application: Adobe Acrobat 7.0

Printer: HP Designjet T1 100 series

Software: HP-GL/2 Driver

Operating System: Windows

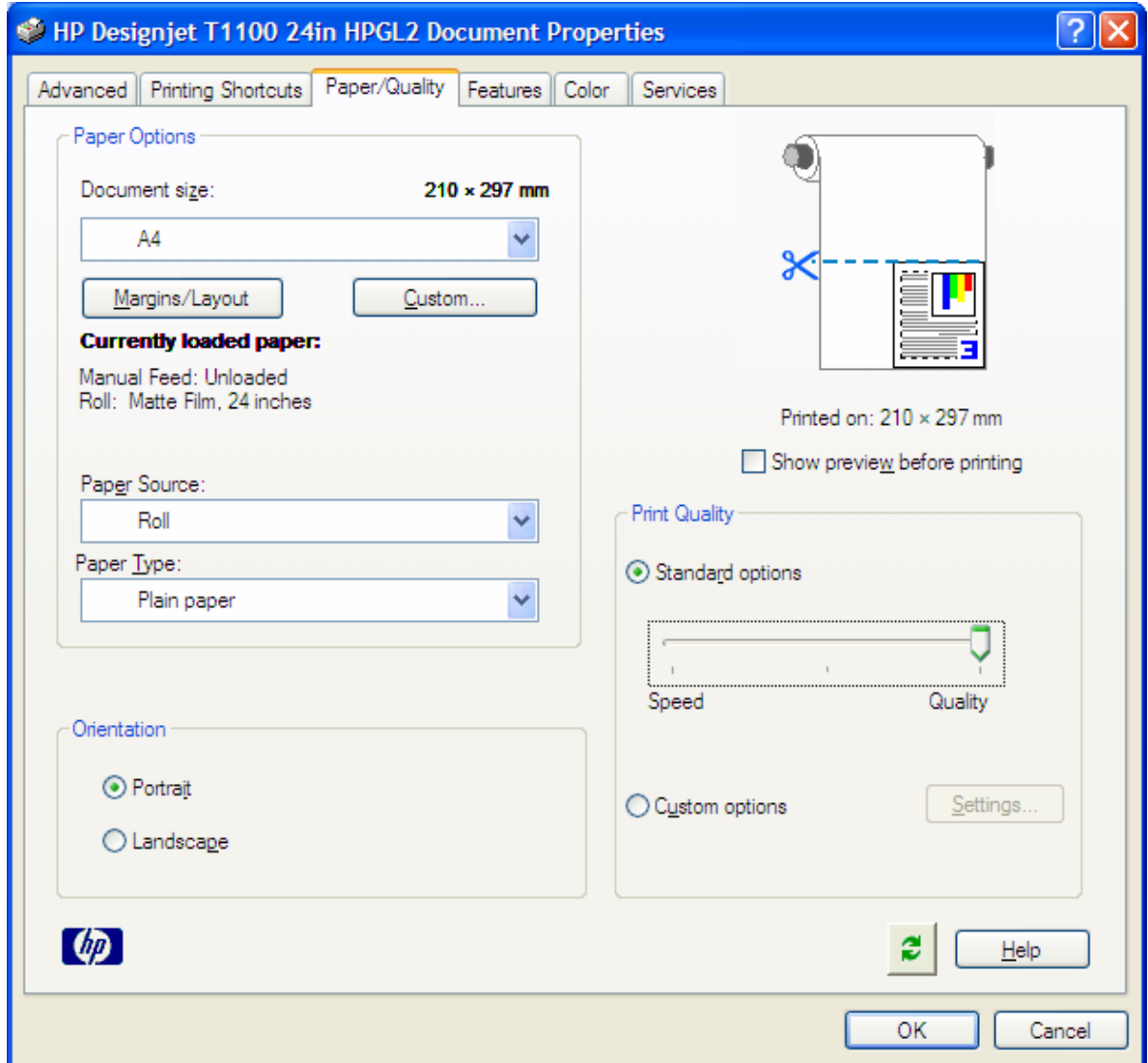
1. First recommendations:
 - Refer to the [Media type functionality & features](#) and choose the most appropriate media.
 - Ensure that the Paper Type setting on the front panel corresponds to the paper you intend to use. It is essential that the paper is correctly color calibrated for the printer; refer to the [Calibrate my printer](#) document.
2. Open Adobe Acrobat.
3. Open your file and check the print layout and the overall output before printing.
4. Select Adobe Acrobat settings; **File menu > Print...**:
 - **Printer > Name:** Select the printer (ex. HP Designjet T1100 24in).
 - Select the printing options you need, **Print Range, Page Handling...**



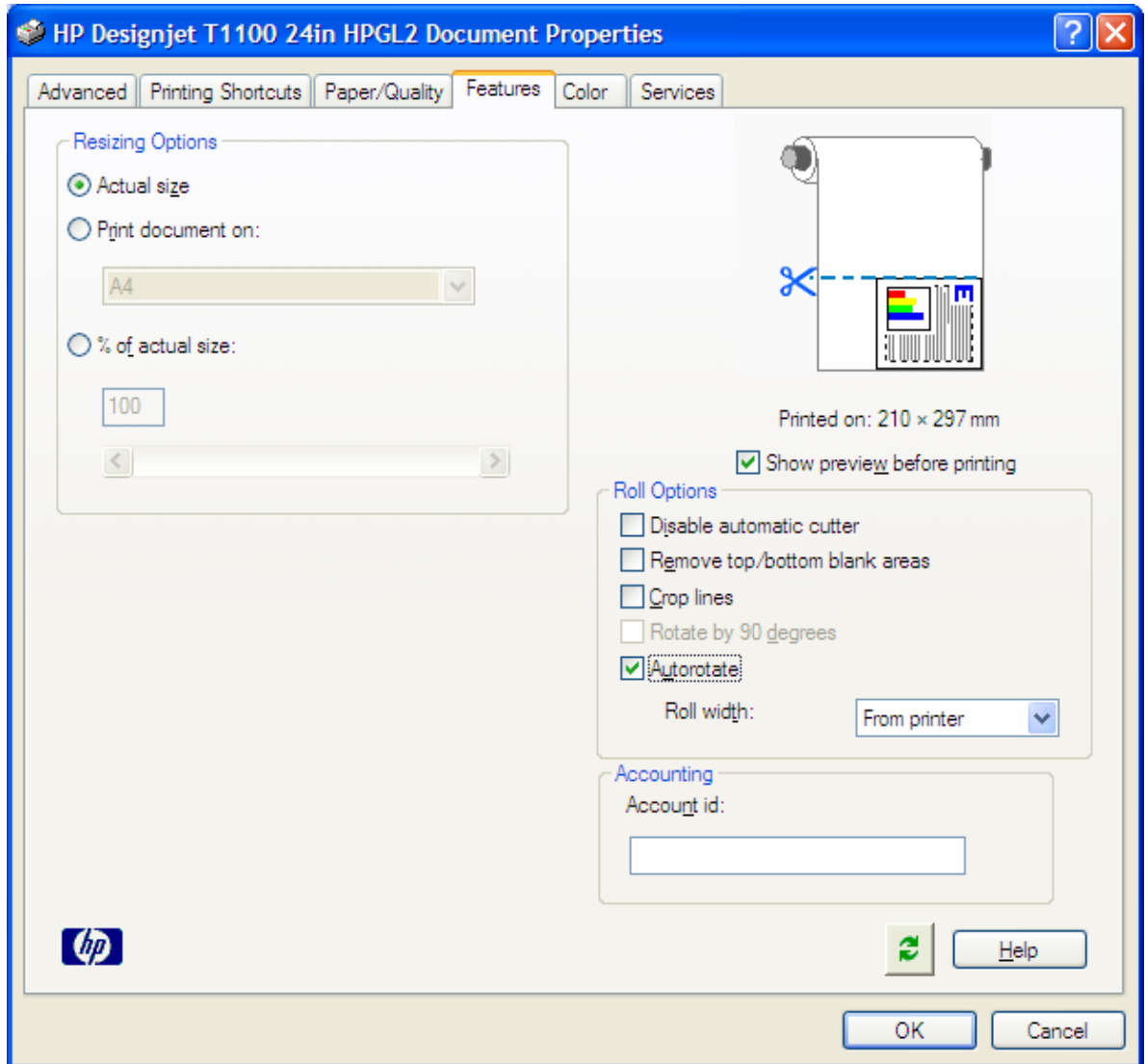
5. Driver settings, **Properties** button:

- **Paper/Quality** tab:

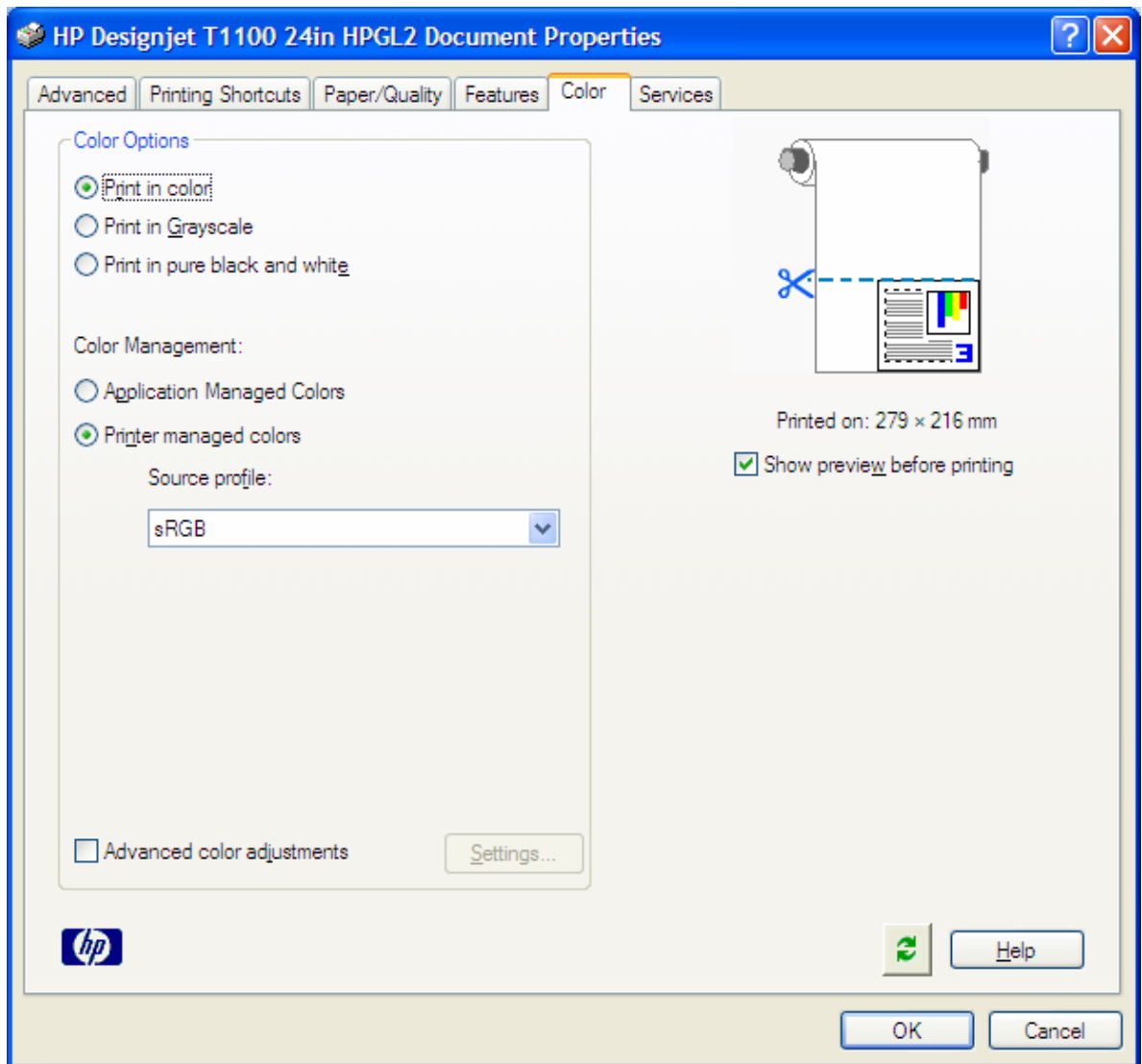
- **Paper Options > Document size:** Select the paper size of the media loaded on the printer. Select **Custom...** button if you want to create a custom page size.
- **Paper Options > Paper Source:** Select the source of the paper, Roll or Sheet.
- **Paper Options > Paper Type:** Select the paper type that is loaded on the printer.
- **Orientation:** Select the orientation of your image on the paper.
- **Print Quality:** Select Standard options and drag the slider to Quality.



- **Features** tab:
 - **Resizing Options:** Select the scale option you want, select **Print document on** and the paper size on which the document will be scaled, or, the **% of actual size**. Make sure that the document size is not bigger than the paper size you have on the printer.
 - **Roll Options:** Check the **Autorotate** checkbox.
 - Check **Show preview before printing**.



- **Color** tab:
 - Select **Print in color**.
 - Select **Color Management > Printer managed colors > sRGB**.



- Select **OK** twice.
6. Preview your banner before printing; check, also, the print settings and the layout of the image (**HP Print Preview** windows are displayed automatically). Select the **Continue** button to proceed with printing or **Cancel** to cancel the job.

For more information on HP Designjet products

www.hp.com/go/designjet

© 2007 Hewlett-Packard Development Company, L.P. The information contained herein is subject to change without notice. The only warranties for HP products and services are set forth in the express warranty statements accompanying such products and services. Nothing herein should be construed as constituting an additional warranty. HP shall not be liable for technical or editorial errors or omissions contained herein.

Adobe is trademarks of Adobe Systems Incorporated. PANTONE is Pantone, Inc.'s check-standard trademark for color.

Rev. 1.0, 09/2007

