



Printing a drawing with correct size and position

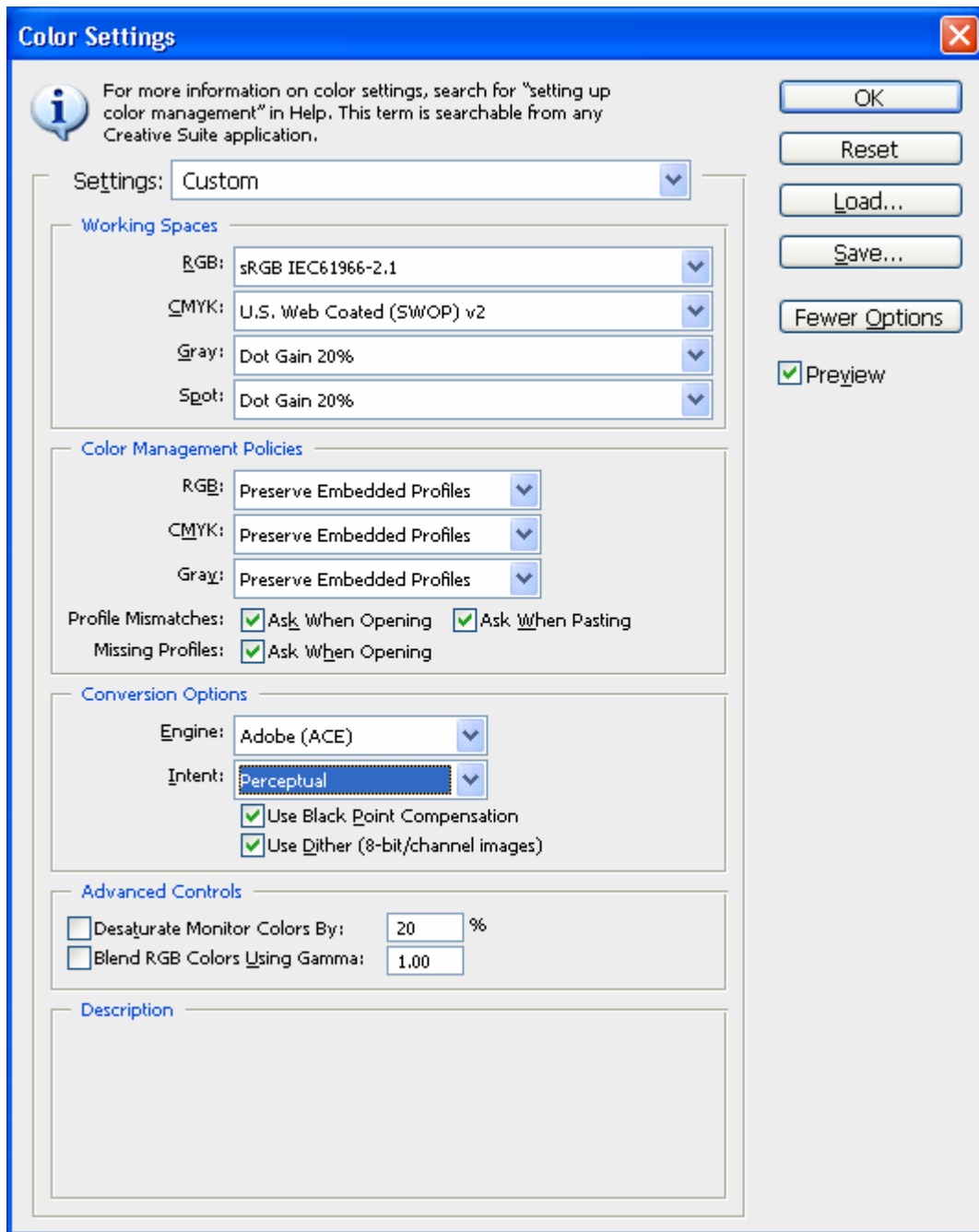
Application: Adobe Photoshop CS3

Printer: HP Designjet T1100 series

Software: PS Driver

Operating System: Windows

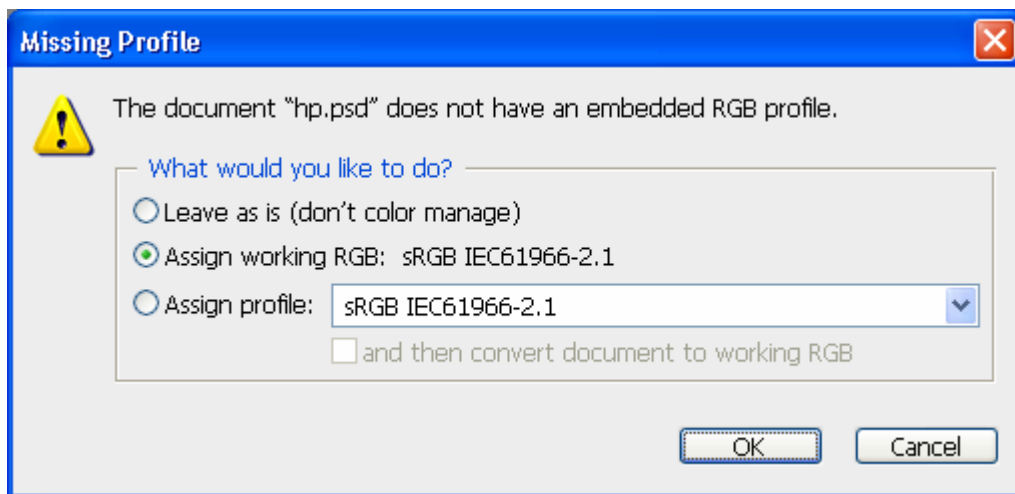
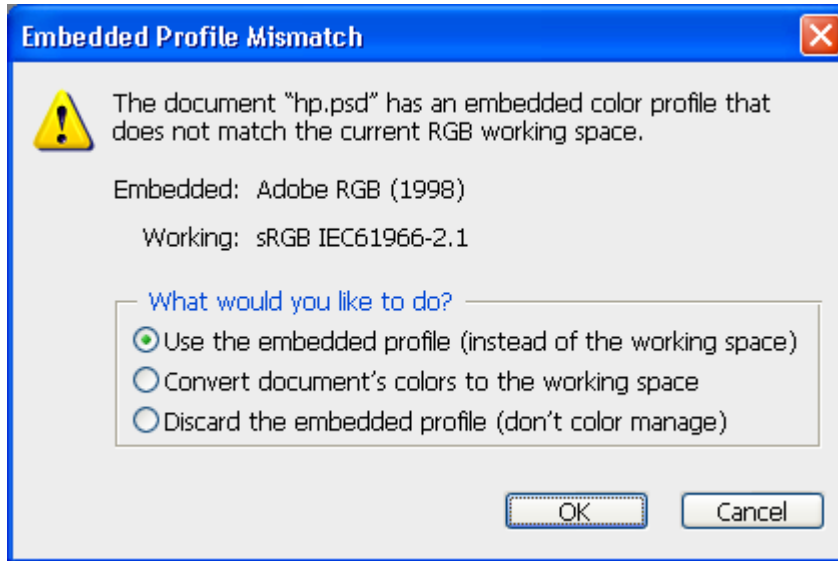
1. First recommendations:
 - Refer to the [Media type functionality & features](#) and choose the most appropriate media.
 - Ensure that the Paper Type setting on the front panel corresponds to the paper you intend to use. It is essential that the paper is correctly color calibrated for the printer; consult the [Calibrate my printer](#) document.
2. Open Adobe Photoshop CS3.
3. Configure the **Color Settings, Edit menu > Color Settings...**:
 - Make sure the setting **More Options** is displayed.
 - **Working Spaces > RGB**: Select the profile of the scanner or other device you have used to get the drawing (source profile), if you don't have it, select sRGB IEC61966-2.1.
 - **Working Spaces > CMYK**: Coated FOGRA27 (for Europe), U.S. Web Coated (SWOP) v2 (for US) and Japan Color 2001 Coated (for Japan).
 - **Color Management Policies**: Preserve Embedded Profiles.
 - **Profile Mismatches**: Check **Ask When Opening** and **Ask When Pasting**.
 - **Missing Profiles**: Check **Ask When Opening**.
 - **Conversion Options > Intent**: Perceptual.



- Select **OK**.

4. Open the image, **File menu > Open...**:

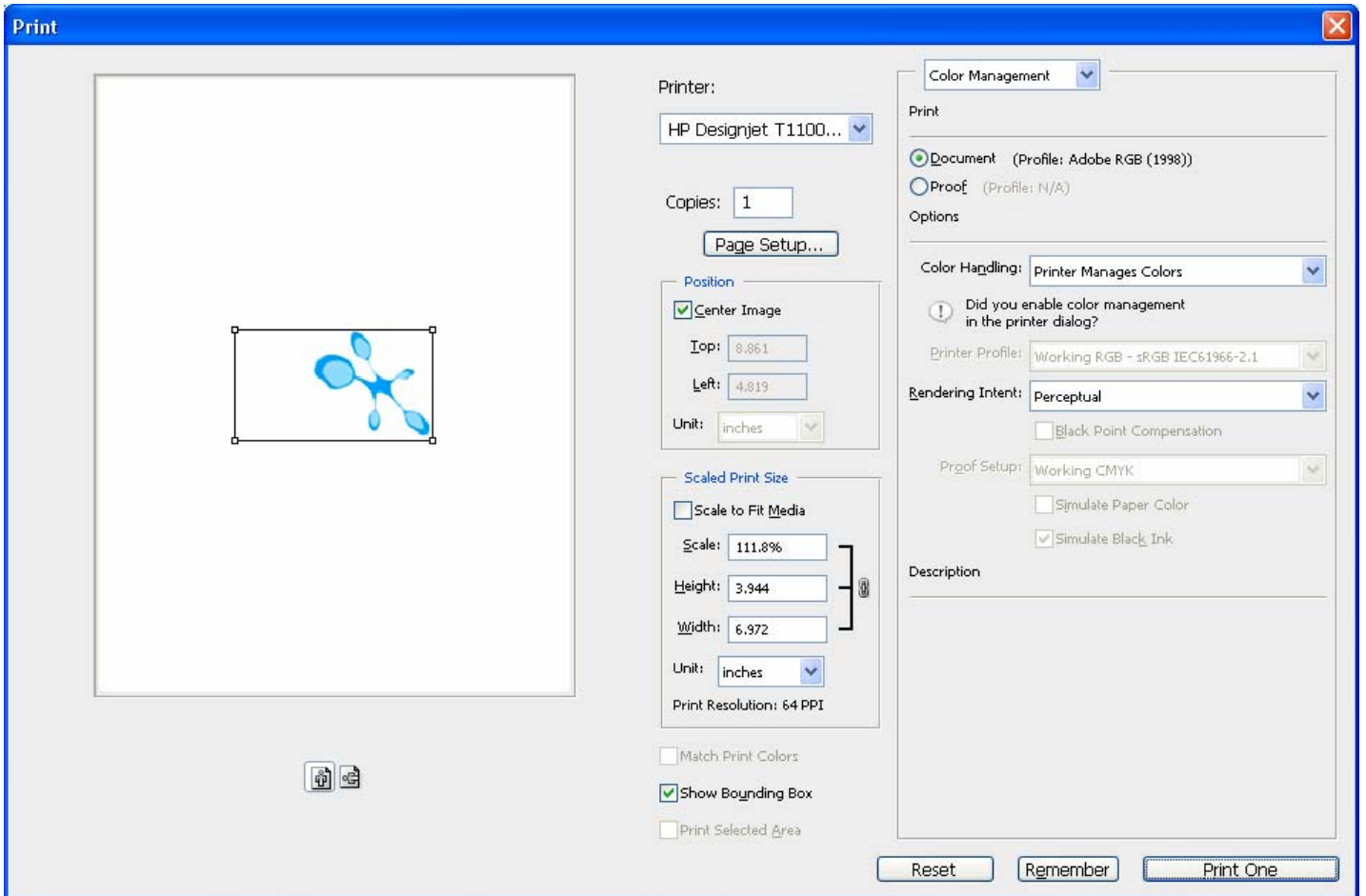
If the document has an embedded color profile that does not match the current working space, select **Use the embedded profile**. Otherwise, select **Assign working space**; in this case, if the displayed image does not look correct, try assigning it to other color spaces with **Edit > Assign Profile** (try **sRGB**, **Adobe RGB**, **ColorMatch RGB** and others) until you are satisfied.



- Select **OK**.

5. Adobe Photoshop **Print...** settings; **File menu > Print...**:

- **Printer:** Select your printer device.
- Set the **Position** and the **Scaled Print Size** you need.
- Make sure that **More Options** are displayed.
- Select the **Color Management** tab:
 - **Print:** Document.
 - **Options > Color Handling:** Printer Manages Colors.



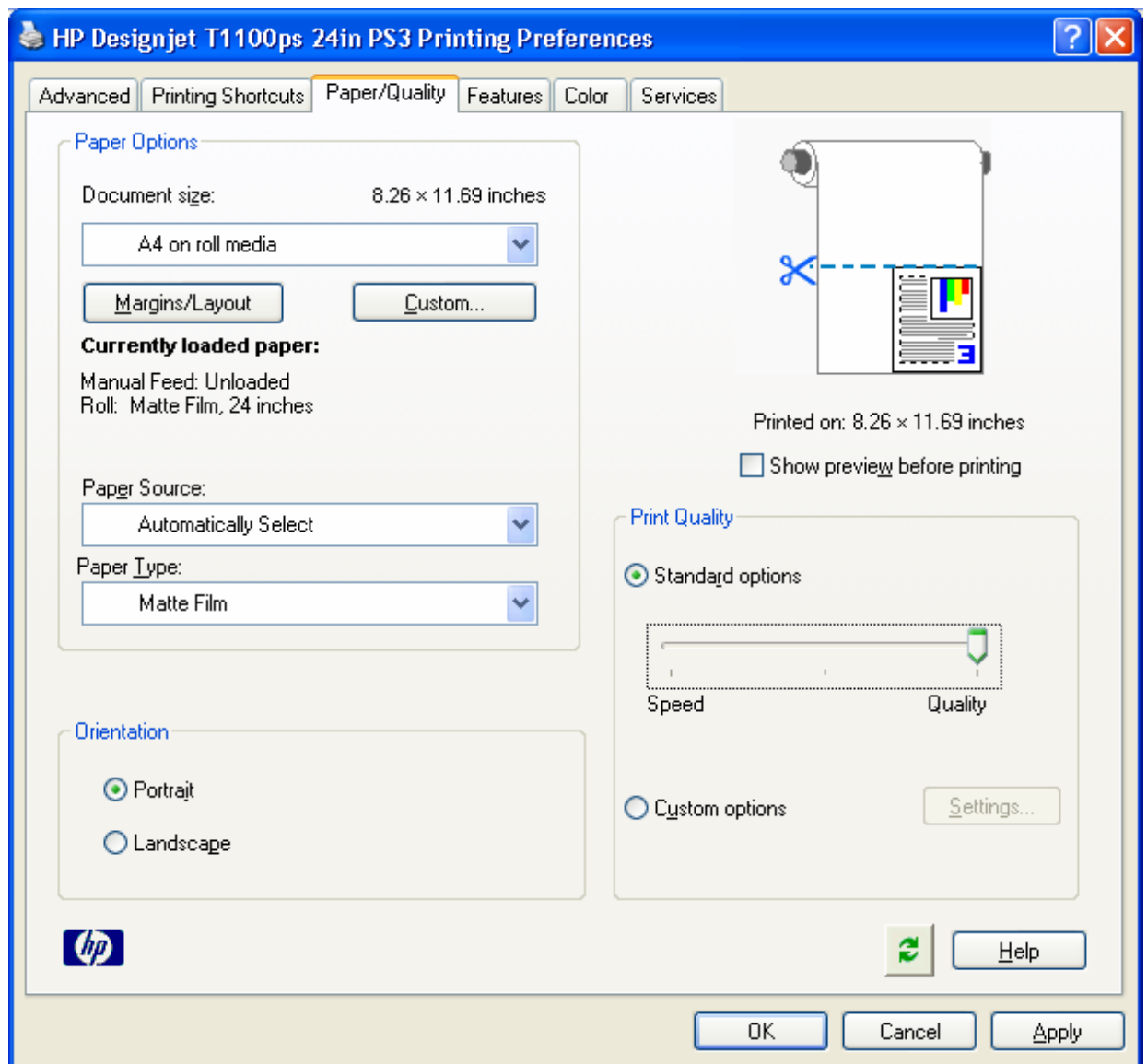
6. Driver Settings; Click **Print One...**:

- **Paper/Quality** tab:

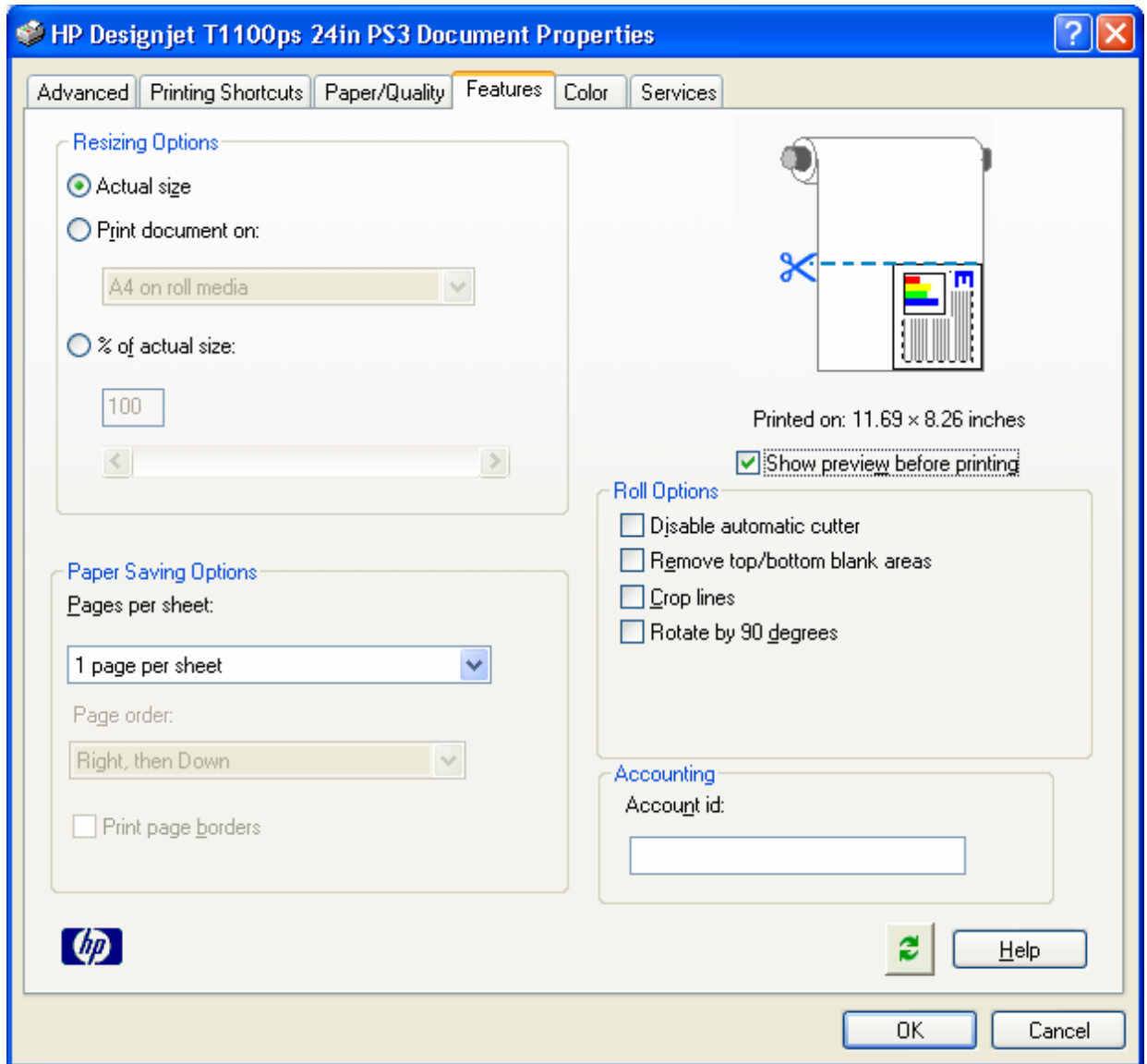
- **Paper Options > Document size:** Select the paper size of the media loaded on the printer. You can select an oversize page size if each oversize page size is large enough to accommodate a standard paper size plus margins.

Select the **Custom...** button if you want to create a custom page size. If you are using a roll, make sure that the paper size fits onto the roll.

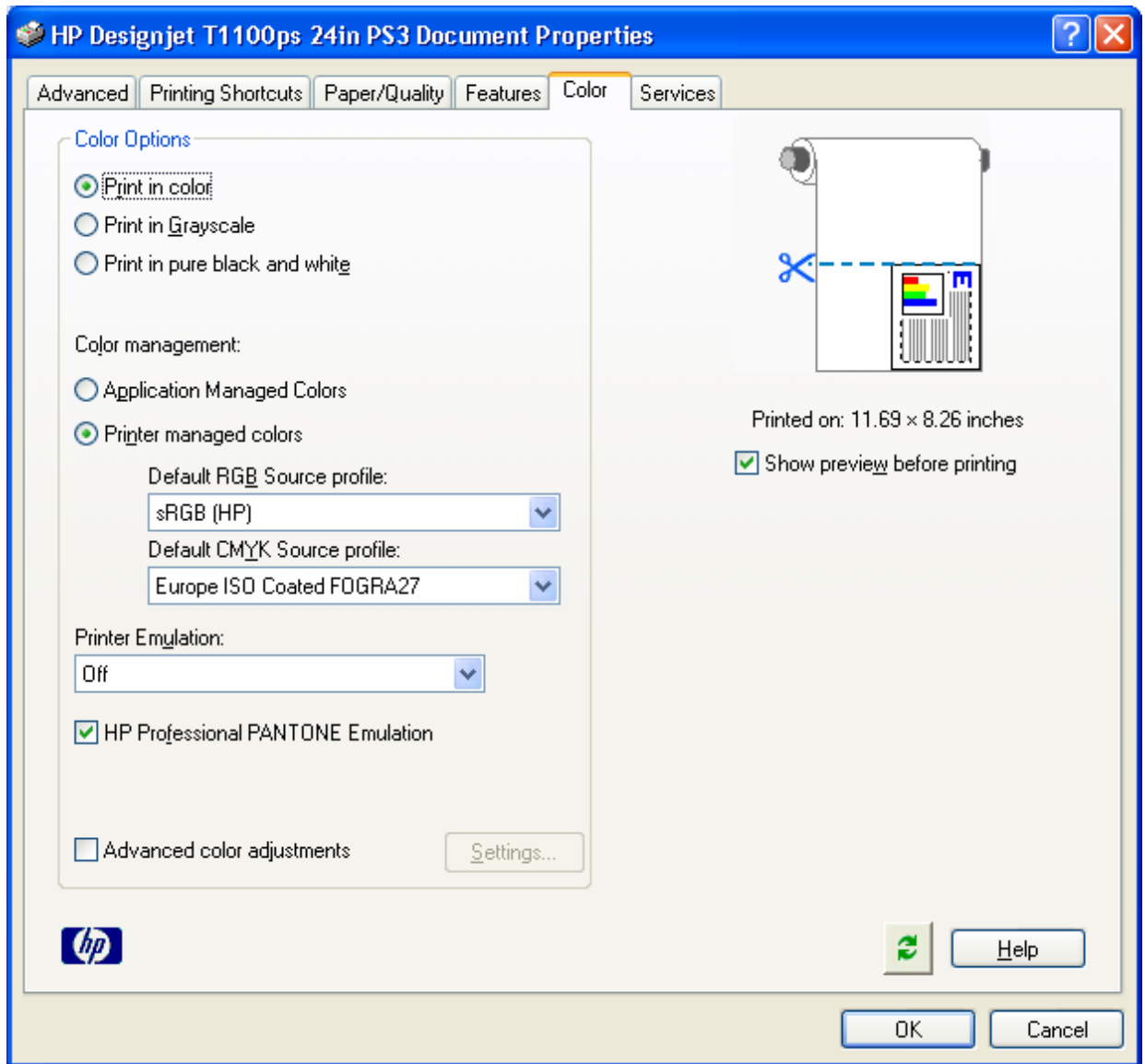
- **Paper Options > Paper Source:** Select the source of the paper, Roll or Sheet.
- **Paper Options > Paper Type:** Select the paper type that is loaded on the printer.
- **Orientation:** Select the orientation of your image on the paper.
- **Print Quality:** Select **Standard options** and drag the slider to **Quality**.



- **Features** tab:
 - **Resizing Options:** Select the scale option you want, select **Print document on** and the paper size on which the document will be scaled, or, the **% of actual size**. Make sure that the document size is not bigger than the paper size you have on the printer.



- **Color** tab > **Color Options**:
 - Select **Print in color**.
 - Select **Color management** > Select **Printer managed colors**> **sRGB (HP)**.



- Select **OK**

7. The **Print Preview** utility will appear, this enables you to view the layout of the document (Page layout and Image preview). If it is correct select **Continue**.

For more information on HP Designjet products

www.hp.com/go/designjet

© 2007 Hewlett-Packard Development Company, L.P. The information contained herein is subject to change without notice. The only warranties for HP products and services are set forth in the express warranty statements accompanying such products and services. Nothing herein should be construed as constituting an additional warranty. HP shall not be liable for technical or editorial errors or omissions contained herein.

Adobe Photoshop and PostScript are trademarks of Adobe Systems Incorporated. PANTONE is Pantone, Inc.'s check-standard trademark for color.

Rev. 1.0, 09/2007

