



Contour cutting

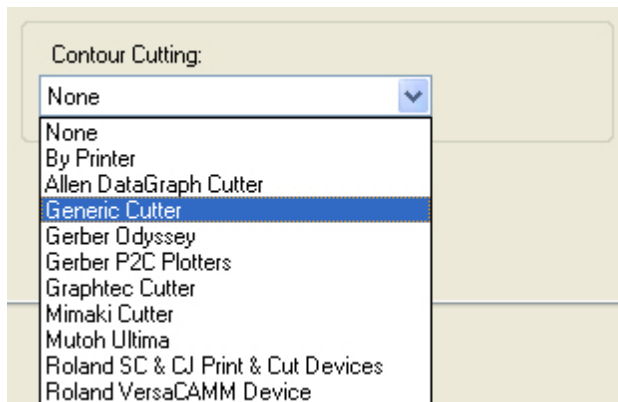
Printer: HP Designjet 9000s printer series

Software: PosterShop 6.5 for HP

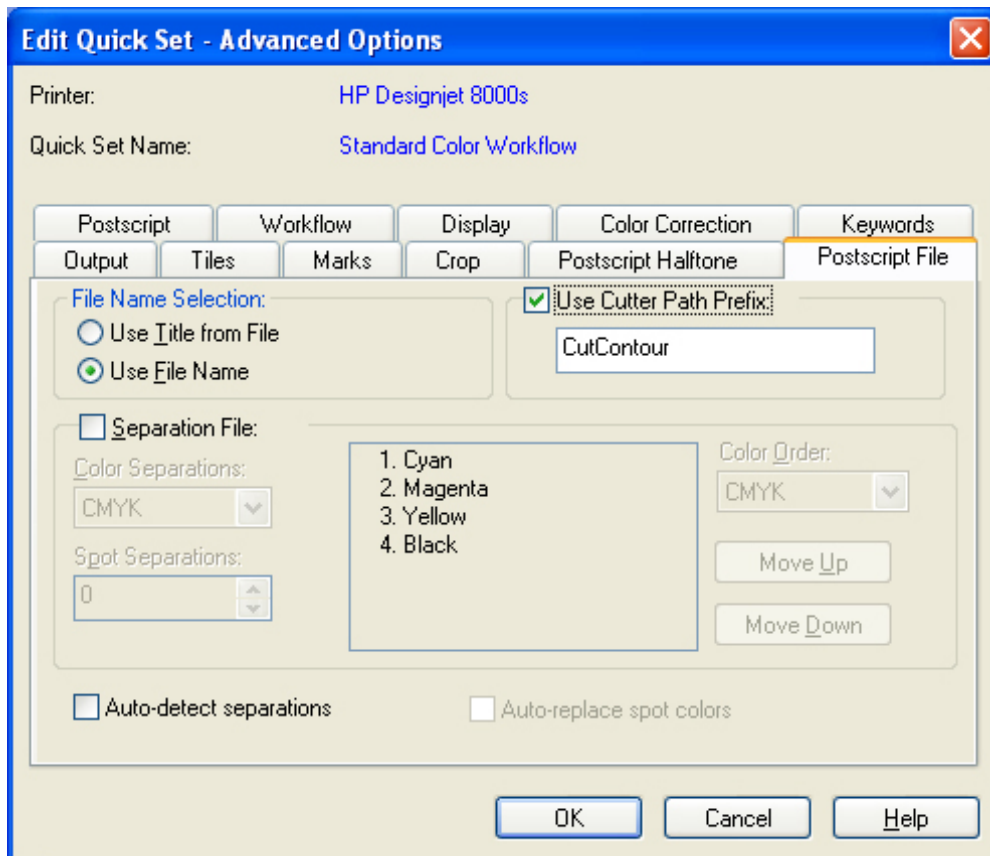
Operating System: Windows

Contour cutting allows you to print an image and then use a specialized device to cut portions of that image. To do this, you prepare a file with a specialized spot color which acts as a cut path to determine where the image needs to be cut. The RIP will recognize this spot color and will draw a barcode and a number with instructions for the cutting device on how to cut it.

1. First, prepare your file by creating a cut path in a vector-base drawing program such as Adobe Illustrator, Adobe InDesign, QuarkXpress, etc..., it may be as simple or as complex as you desire, and you must assign a spot color to it, the name of this spot color must have a unique prefix which matches the prefix assigned in the RIP-Queue, for example **CutContour**, that is the RIP's default. Then save your file in either .eps or .pdf format.
2. Launch PosterShop.
3. Configure the printer settings, highlight the printer and click **Change...** button (right hand).
 - **Page Size:** Select the media size loaded on the printer.
 - **Setup...** button:
 - **General** tab: Set the top offset to 2 inches.
 - **Options** tab: Select the desired type of cutter from the **Contour Cutting** drop-down menu. If this menu does not list your specific cutter, select Generic Cutter.



- Click **OK** until the RIP-Queue window
4. Modify your Quick Set for your contour cut files, **Edit Quick Set** (select your Quick Set) > **Edit...** button > **Advance...** button > **PostScript File** tab:
 - Enable the **Use Cutter Path Prefix**.
 - Within the text field, enter the prefix you assigned to the cut path spot color in the application, it can be **CutContour** that is the default one. If this field does not match the prefix you assign to the cut path spot color, the RIP will not recognize the spot color as a cut path, be careful because it is key sensitive.



- Click **OK** until the RIP-Queue window.
5. Open your file, **File menu > Open**, browse to the location of your file and highlight it.
 6. Choose the printer from the **Printer** drop-down menu and choose the Quick Set you have just created from the **Quick Set** drop-down menu. Click **Open**
 7. Return to the RIP-Queue and check the preview, you can modify the job settings in the **Change...** or in the **Preflight** button. Print the job if the preview is correct.
 8. Once the RIP-Queue finishes printing the file, use the CUT-Server to cut the print.

For more information on HP Designjet products

www.hp.com/go/designjet

© 2005 Hewlett-Packard Development Company, L.P. The information contained herein is subject to change without notice. The only warranties for HP products and services are set forth in the express warranty statements accompanying such products and services. Nothing herein should be construed as constituting an additional warranty. HP shall not be liable for technical or editorial errors or omissions contained herein.

Adobe Photoshop and PostScript are trademarks of Adobe Systems Incorporated. PANTONE is Pantone, Inc.'s check-standard trademark for color.

Rev. 1.0, 01/2006

