



Contour cutting

Application: Adobe InDesign CS2

Printer: HP Designjet 9000s printer series

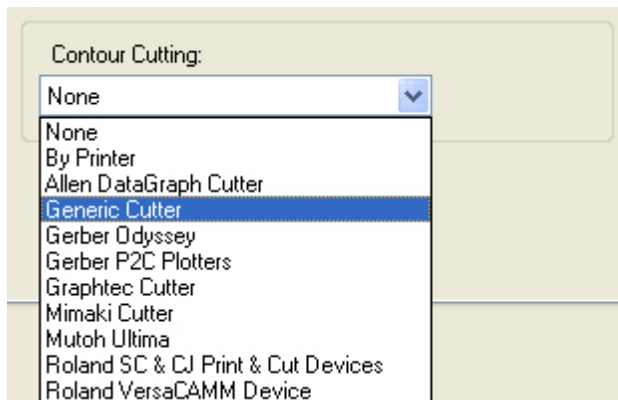
Software: PosterShop 6.5 for HP

Operating System: Windows

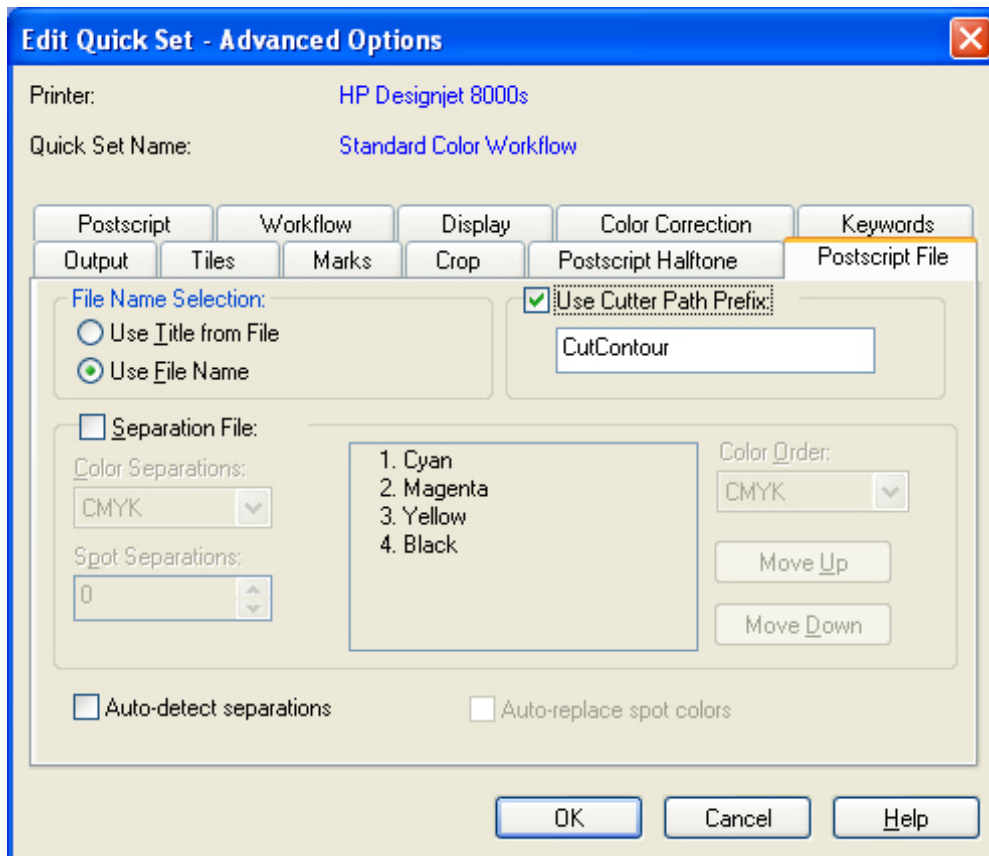
Contour cutting allows you to print an image and then use a specialized device to cut portions of that image. To do this, you prepare a file with a specialized spot color which acts as a cut path to determine where the image needs to be cut. The RIP will recognize this spot color and will draw a barcode and a number with the instructions for the cutting device about how to cut it.

PosterShop 6.5:

1. Launch PosterShop.
2. Configure the printer settings, highlight the printer and click **Change...** button (right hand)
 - **Page Size:** Select the media size loaded on the printer.
 - **Setup...** button:
 - **General** tab: Set the top offset to 2 inches.
 - **Options** tab: Select the desired type of cutter from the **Contour Cutting** drop-down menu. If this menu does not list your specific cutter, select Generic Cutter.



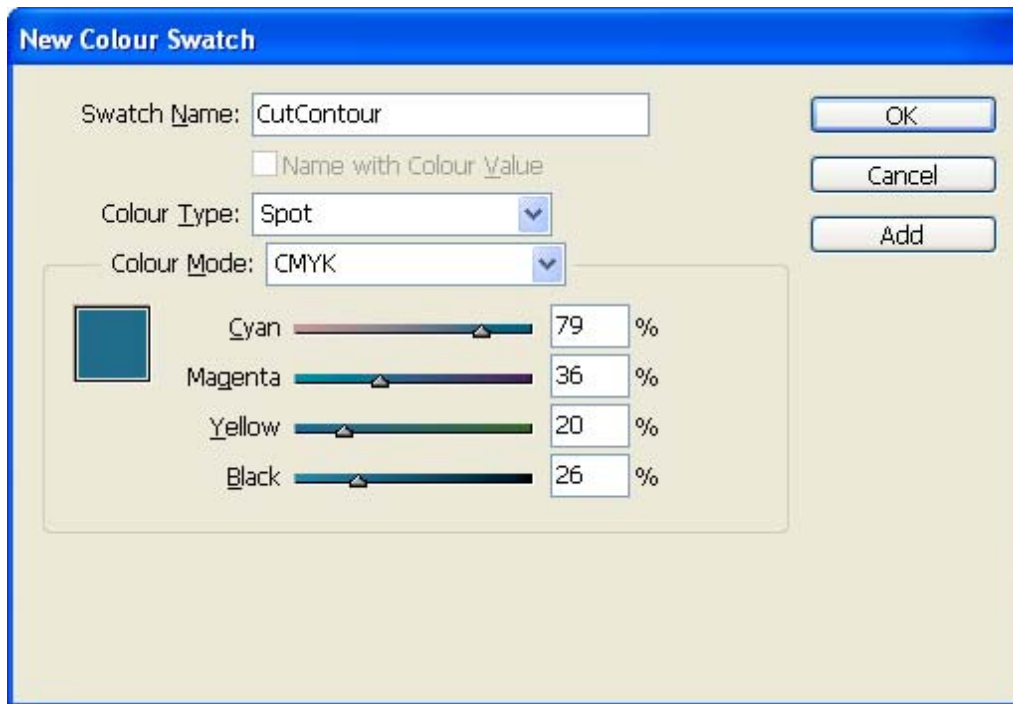
- Click **OK** until the RIP-Queue window
3. Modify your Quick Set for your contour cut files, **Edit Quick Set** (select your Quick Set) > **Edit...** button > **Advance...** button > **PostScript File** tab:
 - Enable the **Use Cutter Path Prefix**.
 - Within the text field, enter the prefix you assigned to the cut path spot color in the application, it can be **CutContour** which is the default one. If this field does not match the prefix you assigned to the cut path spot color, the RIP will not recognize the spot color as a cut path, be careful because it is key sensitive.



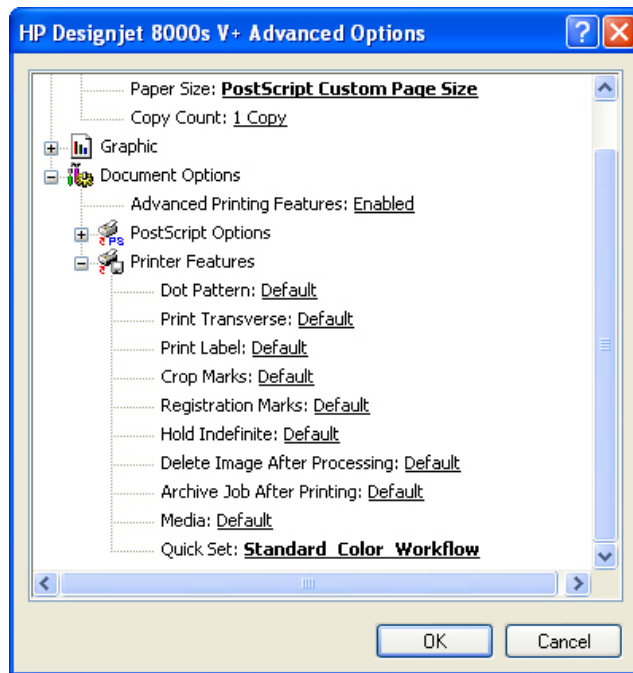
- Click **OK** until the RIP-Queue window.

Adobe InDesign CS2:

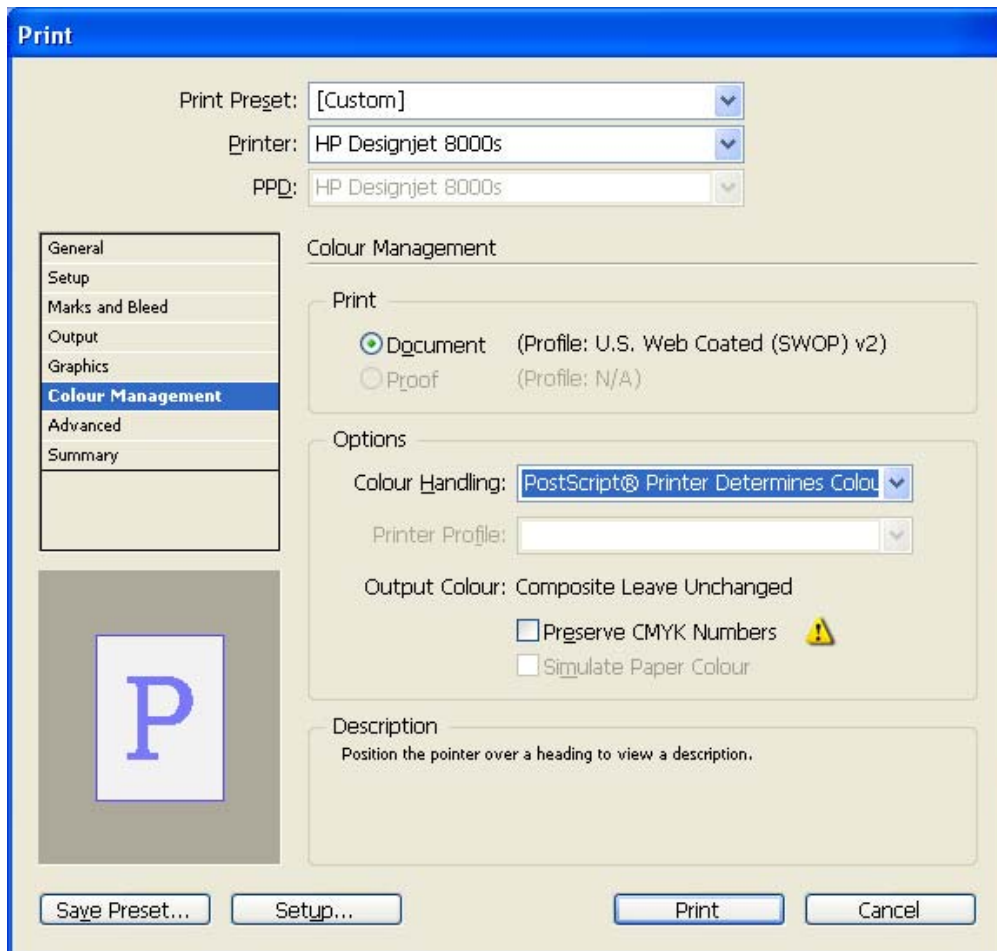
4. Open the application and define the cut path of the document, it may be as simple or complex as you desire. Once the cut path is created, you must assign a spot color to it, the name of this spot color must have a unique prefix which matches the prefix assigned in the RIP-Queue, it is **CutContour**. The following steps are specific to Adobe InDesign CS2:
 - Open Adobe InDesign CS2.
 - InDesign **Color Settings**, configure it for the other objects or images you have in the document, **Edit menu > Color Settings...**
 - Open the desired document, **File menu > Open...**
 - Edit your spot color, **Window menu > activate Swatches**, click on the left corner arrow and select **New Color Swatch...**:
 - **Color Type:** Spot.
 - **Color Mode:** CMYK.
 - **Swatch Name:** Enter the name of the desired prefix, it should be exactly the same as entered in the RIP, be careful because it is key sensitive; you can use the RIP default one, **CutContour**.
 - Use the slider bars to create a CMYK color. The color is not important, only what you name the color.



- Click **Add**.
- Draw your cut path using the shape you want and assign the new spot color (CutContour) to it.
- Printer settings, **File menu > Print... > Setup...** button:
 - **Select Printer...**: Select the printer.
 - **Preferences** button > **Advanced...** button:
 - Under **Paper/Output**:
 - **Paper Size**: Select **PostScript Custom Paper Size**, configure the dimensions to match the image dimensions and select the **Paper Feed Direction** you want (be careful because it can rotate the job on the printer).
 - Under **Printer Features**:
 - **Quick Set**: Select the Quick Set you have just configured for the contour cutting.
 - Select **Default** on the other settings.



- Click **OK**.
 - **Layout** tab > **Orientation**: Select the orientation which matches the image on the paper.
 - Click **OK** until the InDesign **Print** window.
- Adobe InDesign **Print...** settings:
 - **Setup** (left hand menu):
 - **Paper Size**: Defined by Driver.
 - **Options**: Select the scaling option you need.
 - **Output** and **Color Management** (left hand menu): configure them for the other objects or images you have in the document (do not select **Separations**).



- Click **Print**.
5. Return to the RIP-Queue and check the preview, you can modify the job settings in the **Change...** or in the **Preflight** button. Print the job if the preview is correct.
 6. Once the RIP-Queue finishes printing the file, use the CUT-Server to cut the print.

For more information on HP Designjet products

www.hp.com/go/designjet

© 2005 Hewlett-Packard Development Company, L.P. The information contained herein is subject to change without notice. The only warranties for HP products and services are set forth in the express warranty statements accompanying such products and services. Nothing herein should be construed as constituting an additional warranty. HP shall not be liable for technical or editorial errors or omissions contained herein.

Adobe Photoshop and PostScript are trademarks of Adobe Systems Incorporated. PANTONE is Pantone, Inc.'s check-standard trademark for color.

Rev. 1.0, 01/2006

