



Printing solutions

Application: Adobe Illustrator CS2

Printer: HP Designjet 9000s printer series

Software: PosterShop 6.5 for HP

Operating System: Windows

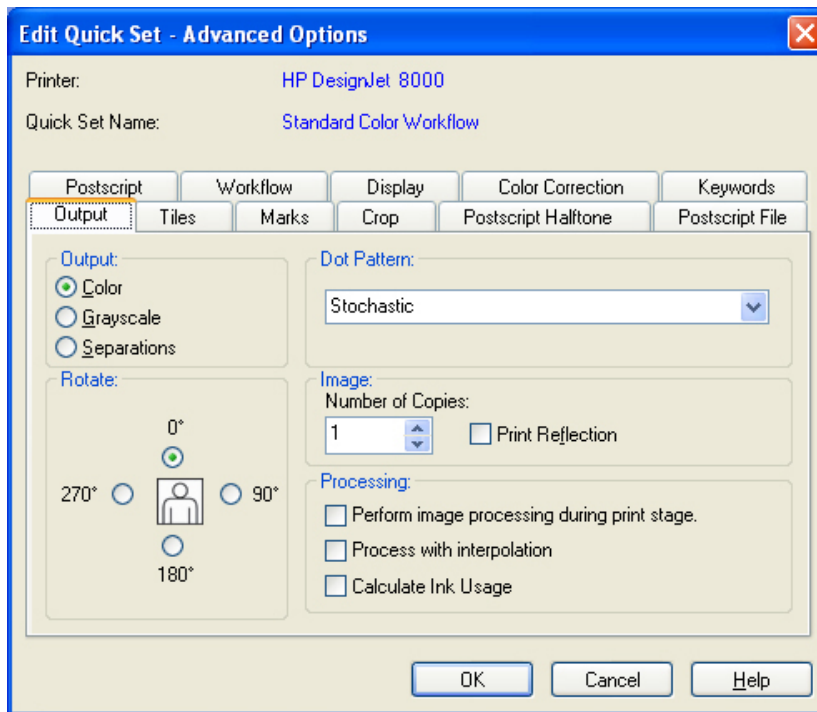
1. First recommendations:

- See the [Media type functionality & features](#) and choose the most appropriate media.
- It is essential that you have the media type correctly calibrated with the printer and print mode, consult the [Calibrate my printer](#) document.
- In order to get a correct display, it's also essential that you have the monitor calibrated, consult the [Profile my monitor](#) section.

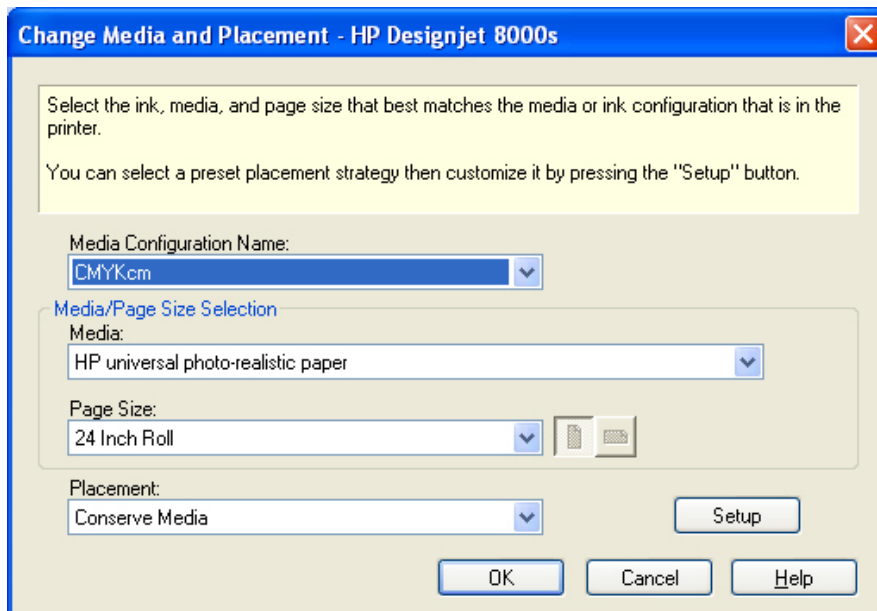
PosterShop 6.5:

2. Configure Printer and Quick Sets for the jobs, highlight the printer and click on **Configure Printer**:

- **Device** tab: Configure the printer port.
- **Media** tab: You can import a new media type if needed.
- **Pages Size** tab: Add the media size loaded on the printer if it is not in the list.
- **Quick Sets** tab > **New...** button:
 - Type the **Quick Set Name** (for example a name that describes the media and resolution of the quick set).
 - **Media**: Check **Get Media and Page Size From Printer**.
 - **Sizing Rule**: Select and escalation option you need (for accurate option select the **Width** or **Height** you desire for your job).
 - **Mode > Resolution**: 720.
 - **Mode > Color Management > Change Profiles...** button > **Profiles** tab:
 - You don't need to worry about the profiles and rendering intent because you will select **Let PostScript printer determine colors** option in Illustrator, then, the application tells the RIP which source profile and rendering intent should be used for the conversion to the print space, these are the Document Profiles and the Rendering Intent of the application.
 - **Proof**: Be sure to leave it off, **No Profile Selected**.
 - Click **OK**.
 - **Advanced...** button:
 - **Output** tab:
 - **Output**: Select **Color**.
 - **Rotate**: Select the rotation option you need.
 - **Image**: Select the **Number of Copies** and the **Print Reflection** if you want to print the job as a mirror.



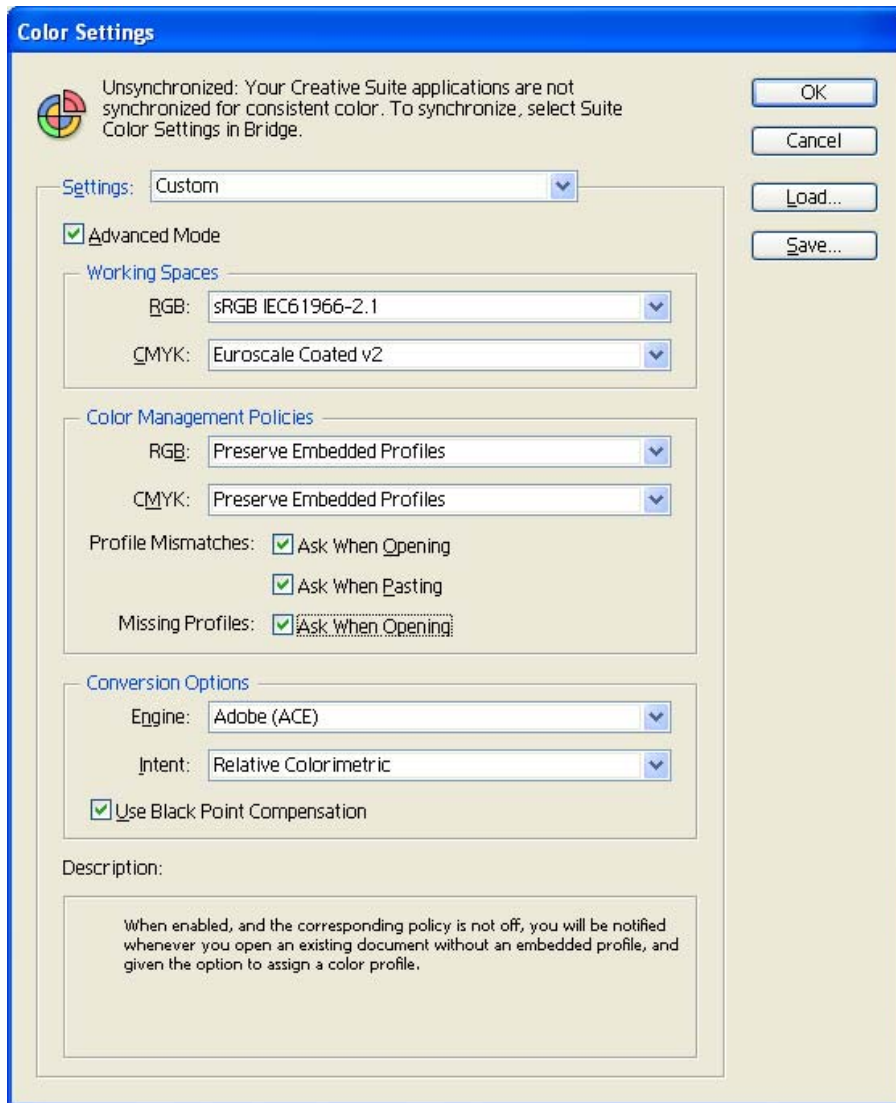
- **Workflow** tab: Select how you wish the RIP to handle images and jobs. Select **Hold for Operator...** so that you will be able to see the job preview before printing.
 - Click **OK** until the RIP-Queue window.
- 3. Highlight the printer and click **Change...** button (right hand)
 - **Media:** Select the media type loaded on the printer.
 - **Page Size:** Select the media size loaded on the printer.
 - **Placement:**
 - Select **Conserve Media** to conserve media by automatically placing jobs to utilize the most media possible, it rearranges the jobs when necessary, but does not rotate the jobs.
 - Select **Print Jobs Individually** to print only one job at time.
 - Select **Fotoba or Discuss Cutter Marks** to print your images with fotoba cutter marks.
 - Select **Group Jobs Together** to strategy place jobs side-by-side to utilize more media, but it does not rearrange the order of the jobs.
 - Modify more specific options in **Setup** button.



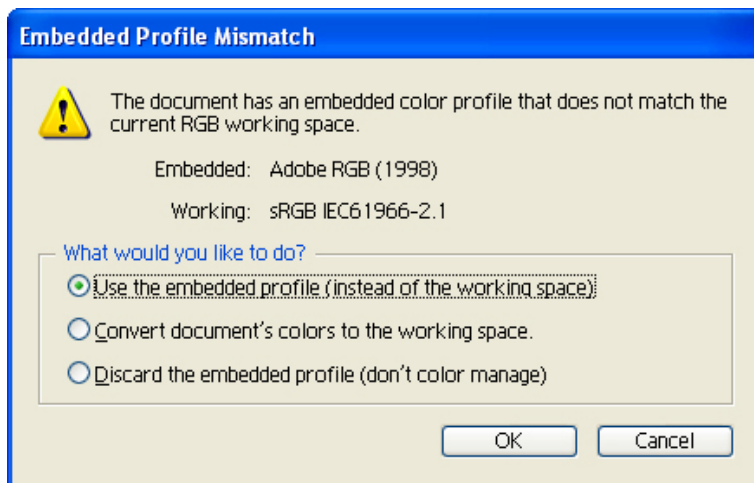
- Click **OK**.

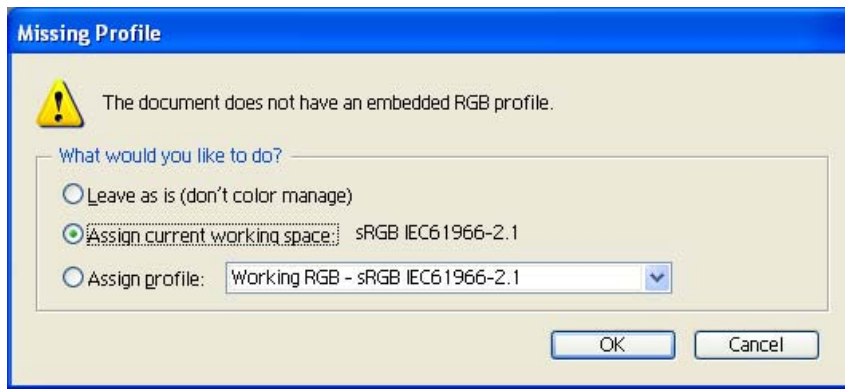
Adobe Illustrator CS2:

4. Configure the **Color Settings, Edit menu > Color Settings...**:
 - Make sure the **Advanced Mode** check box is ticked.
 - **Working Space > RGB**: Select one from the list, for example sRGB IEC61966-2.1.
 - **Working Space > CMYK**: Select one from the list, for example Euroscale Coated v2 (for Europe), U.S. Web Coated (SWOP) v2 (for US) and Japan Standard v2 (for Japan).
 - **Color Management Policies**: Preserve Embedded Profiles.
 - **Profile Mismatches**: check **Ask When Opening** and **Ask When Pasting**.
 - **Missing Profiles**: check **Ask When Opening**.
 - **Conversion Options > Intent**: Relative Colorimetric.

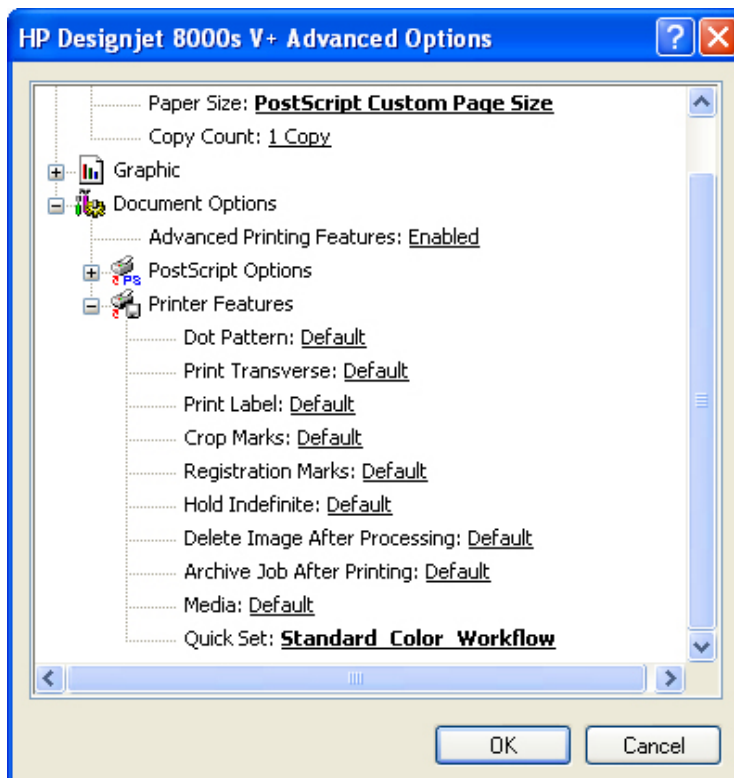


- Click **OK**.
5. Open the image, **File menu > Open...**: If the document has an embedded color profile that does not match the current working space, select **Use the embedded profile**. Otherwise, select **Assign working space**.



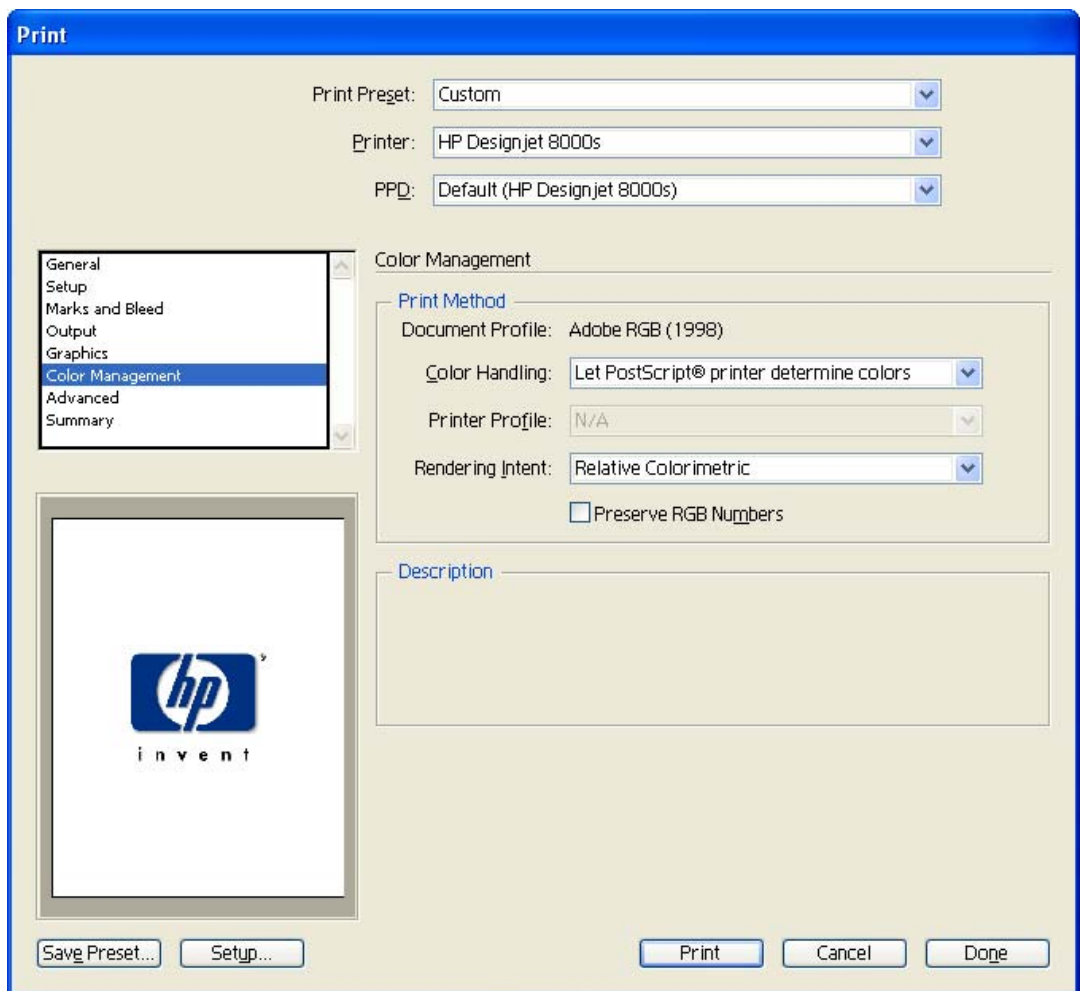


- Click **OK**.
6. Make sure you have configured the **Document Setup** appropriately for your document, **File menu > Document Setup...**
 7. Printer settings, **File menu > Print... > Setup...** button:
 - **Select Printer...**: Select the printer.
 - o **Preferences** button > **Advanced...** button:
 - Under **Paper/Output**:
 - **Paper Size**: Select **PostScript Custom Paper Size**, configure the dimensions to match the image dimensions and select the **Paper Feed Direction** you want (be careful because it can rotate the job on the printer).
 - Under **Document Options > Printer Features**:
 - **Quick Set**: Select the Quick Set you have created.
 - Select **Default** on the other settings.



- Click **OK**.

- **Layout** tab > **Orientation**: Select the orientation which matches the image on the paper.
 - Click **OK** until the **Print** window.
8. Adobe Illustrator **Print...** settings:
- **General** (left hand menu):
 - **Media > Size**: Defined by Driver.
 - **Output** (left hand menu):
 - **Mode**: Composite.
 - **Color Management** (left hand menu):
 - **Print Method > Color Handling**: Let PostScript printer determine colors.
 - **Print Method > Rendering Intent**: Select Perceptual for images, Saturation for graphics, Relative Colorimetric for proofing or Absolute Colorimetric for proofing (paper white emulation).



- Click **Print....**
9. Return to the RIP and check the preview, you can modify the job settings in the **Change...** button or in the **Preflight** button. Print the job if the preview is correct.

For more information on HP Designjet products

www.hp.com/go/designjet

© 2005 Hewlett-Packard Development Company, L.P. The information contained herein is subject to change without notice. The only warranties for HP products and services are set forth in the express warranty statements accompanying such products and services. Nothing herein should be construed as constituting an additional warranty. HP shall not be liable for technical or editorial errors or omissions contained herein.

Adobe Photoshop and PostScript are trademarks of Adobe Systems Incorporated. PANTONE is Pantone, Inc.'s check-standard trademark for color.

Rev. 1.0, 01/2006

