



Technical Newsletter: Working with Non-HP Papers HP Designjet Z6100 series version for Firmware 3.x

June 22nd 2007



When working with non-HP papers you may be wondering how do I use them correctly with the HP Designjet Z6100 Photo Printer series.

In this market place there are many different papers and many different brands to choose from, because of this it is even more important that you select the paper settings correctly, both when loading the paper and selecting it in the front panel and making the selections from the driver from your computer. These paper settings are in fact determining a number of basic parameters for the printer-paper interaction. Among others, these include: ink limiting, maximum density and color transition linearity thresholds. You can select the correct printer-paper interaction for your particular media by selecting the applicable paper type

The table on the next page shows the recommended paper settings for some of the non-HP papers in the market. See [List of Non-HP Papers Recommended Settings](#) table (page 3). In case your non-HP paper does not appear in the next pages, we also explain the different paper settings in the table [Selecting the media profile that best matches your paper](#) (page 5). This will help you to select the profile most suitable for your paper.

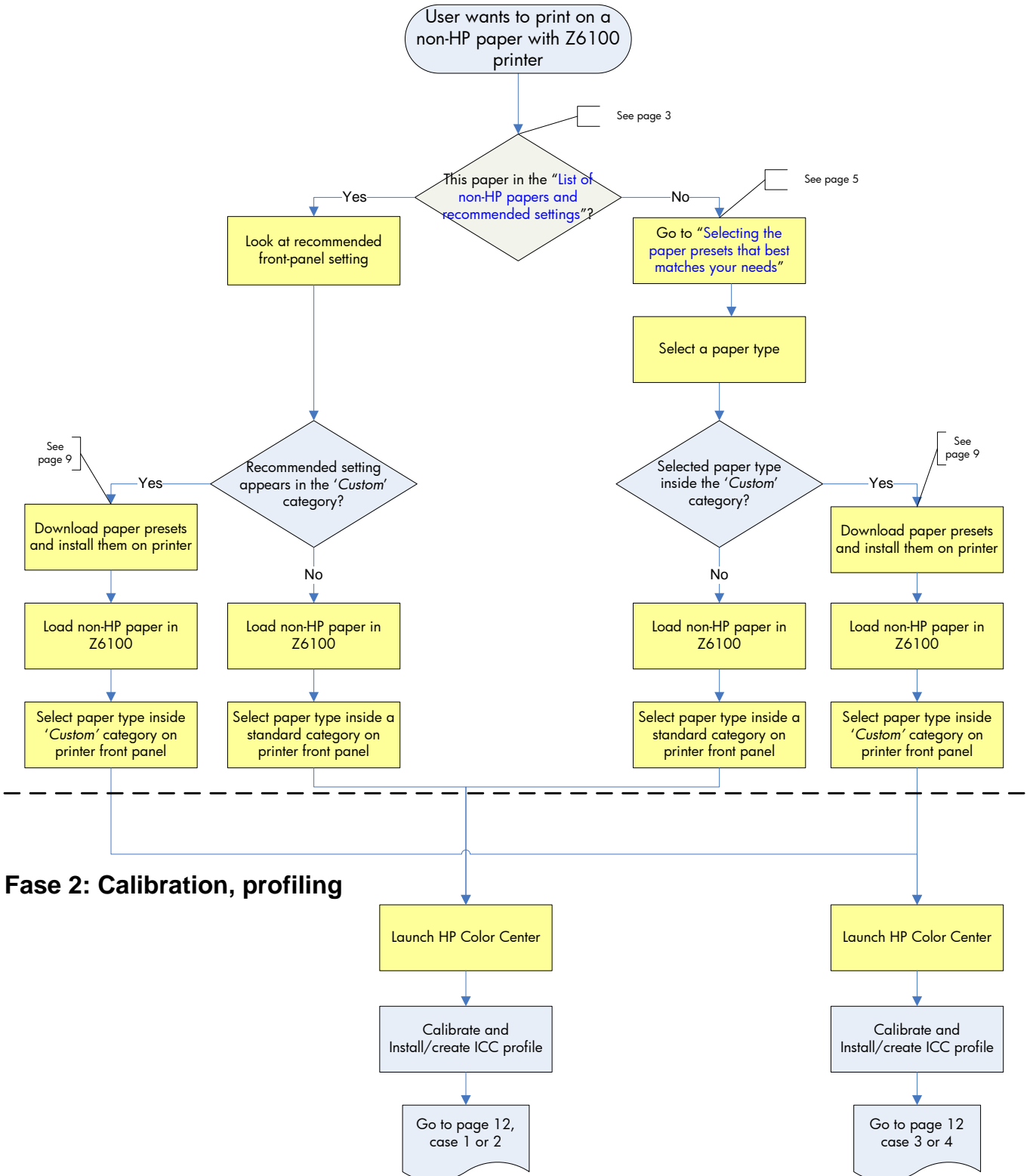
To optimize their use, after loading the paper with the recommended settings, you will need to calibrate and then profile the paper. For creating the ICC profile, you have two different options:

- Profile the paper using the HP Color Center.
- Use a non-HP profile which has been developed by someone else, maybe by a colleague or by the paper manufacturer. To find more details about this option refer to the section [Different ways to work with non-HP papers](#) on page 12.

Here are the different steps you will have to follow in order to use any non-HP paper with your Z6100 printer series:

Fase 1: Paper settings selection

Note
yellow shaded boxes require user interaction



LIST OF NON-HP PAPERS & RECOMMENDED SETTINGS		
Paper Manufacturer	Paper Name	Front Panel Selection
Hahnemühle	Hahnemühle Photo Rag < 250 gsm	Fine Art Material >Fine Art Paper
Ilford	Ilford Galerie Smooth Pearl Paper 290 gsm	Custom > Photo Gloss (less ink)
	Ilford Galerie Smooth Gloss 290 gsm	Custom > Photo Gloss (less ink)
	Instant Dry Glossy Photo RC Paper 270gsm – IPNQ3GP11	Photo Paper > HP Premium ID Photo Gloss
Pictorico	Pictorico Proofing Matte 155gsm/SemiGloss (P3GH0G5720022)	Custom > Photo Gloss (more ink)
	Pictorico Hi Gloss Photo Paper (HGP-24100/2)	Photo Paper > HP Premium ID Photo Gloss
Kodak	Kodak Premium Rapid Dry Photo Luster 260g	Custom > Photo Gloss (less ink)
	Kodak professional photo paper 255gr Luster	Photo Paper > Photo Gloss Paper
Fuji	Fujifilm Paper Satin 270 gr	Photo Paper > HP Premium ID Satin
	Fujifilm Photo Paper Glossy 240 gr	Photo Paper > HP Premium ID Gloss
Canson	Arches Soft Natural Smooth 240gr	Fine Art Material >Fine Art Paper
Somerset	Somerset Velvet Enhanced 255gr	Fine Art Material >Fine Art Paper
Intelicoat	Universal PDQ Gloss Photobase 10Mil (DMPDQ2-G)	Photo Paper > HP Premium ID Gloss
	Mat and Gloss canvas Torino17M	Fine Art material > Canvas
	Matte, Poly/Cotton 17 Mil/Artist Stretch Canvas	Fine Art material > Canvas
	DMBP5 Backprint Film 5Mil/125 Microns	Photo Paper > Photo Gloss Paper
	Universal PDQ Gloss Photobase 10Mil (DMPDQ2-L)	Photo Paper > HP Premium ID Gloss
Ketmere Photographic	K. Opaljet 300 Pop-Up Display Film	Banner & Sign Adhesive > Indoor Banner
Sihl Digital Imaging	IJ Maranello Photo Paper PE 195 glossy	Photo Paper > HP Premium ID Gloss
	Universal Artist Canvas 340 matt	Fine Art material > Canvas
Boni	Waterproof PP Matt	Bond and Coated Paper > Heavyweight Coated Paper
	Waterproof PVC Vinyl with low tack (Adhesive)	Self-Adhesive material > Adhesive Vinyl
Phil-Jet	Inkjet media for plotter (Adhesive)	Self-Adhesive material > Adhesive Vinyl
Seyoungcnc	Matt Photopaper with clear backing (Adhesive)	Self-Adhesive material > Adhesive Vinyl
	Canvas	Fine Art material > Canvas
Chang Hyun Deco	Inkjet media (Adhesive)	Self-Adhesive material > Adhesive Vinyl
Nansi Digital	White Canvas 160g	Bond and Coated Paper > Heavyweight Coated Paper

What happened if my front panel & driver selection is highlighted with light orange?

When the setting is highlighted with light orange, this means you will need to download the Media Profile from the HP Knowledge Center. Please go to the [Downloading Media Profiles](#) section (page 9).

After downloading and installing a media profile, the new paper will appear inside the **Custom** category, both on printer front panel and driver.

Selecting the Media Profile that Best Matches Your Needs

If your paper was not listed in the previous [List of Non-HP Papers Recommended Settings](#) on page 3, here you have 2 tables with additional information about:

- non-HP papers
- current HP papers

This will help you choose the right category for your paper.

Paper Type	This is the name that is displayed in the driver & the front panel (the English version)				
Printing Black	Photo Black (Pk) / Matte Black (Mk) / Light Gray (lg): This setting indicates which inks are used when printing the color black: <ul style="list-style-type: none"> • All black inks (All) • Pk and Lg only (lgpk) 				
Ink Limit	Total amount of ink that the paper can absorb to maximize gamut without causing image quality problems. This setting is expressed in pico-liters (or nano-grams) per 1/600 th x 1/600 th inch paper area (divide by 4 for 1/1200 th by 1/1200 th inch area). In general we can say that the higher the ink limit, the higher the gamut.				
Print mode <i>Best Quality or slider in the right position</i>	Rendering resolution (RR)	Resolution at which the image is rasterized/processed in the host (in pixels per printed inch, or <i>pppi</i>)			
	Printing Resolution (PR)	Resolution at which the image is printed (in dots per inch, or <i>dpi</i>)			
	Other info (OI)	<table border="1"> <tr> <td># passes</td> <td>Typically, the higher the numbers of passes, the better the image quality, but at a lower speeds. Also, papers such as glossy media, need a longer drying time, that will generally require a higher number of passes.</td> </tr> <tr> <td>Bidirectional</td> <td>Whether printing when the carriage is traveling in a single direction only (Unidirectional) or in both directions (Bi-directional). Unidirectional modes typically give a better image quality – depending on the number of passes – but at lower speeds.</td> </tr> </table>	# passes	Typically, the higher the numbers of passes, the better the image quality, but at a lower speeds. Also, papers such as glossy media, need a longer drying time, that will generally require a higher number of passes.	Bidirectional
# passes	Typically, the higher the numbers of passes, the better the image quality, but at a lower speeds. Also, papers such as glossy media, need a longer drying time, that will generally require a higher number of passes.				
Bidirectional	Whether printing when the carriage is traveling in a single direction only (Unidirectional) or in both directions (Bi-directional). Unidirectional modes typically give a better image quality – depending on the number of passes – but at lower speeds.				
Automatic Cutter	Yes (Y) / No (N): Whether or not cutting will be performed. Even if Yes is selected, you can still disable actual cutting later through the driver. However, if “No” is selected here, you cannot re-enable it through the driver.				

What happened if paper type is highlighted with light orange?

When the paper type is highlighted with light orange, this means you will need to download the Media Profile from the HP Knowledge Center. Please go to the [Downloading Media Profiles](#) section (page 9).

After downloading and installing a media profile, the new paper will appear inside the **Custom** category, both on printer front panel and driver.

	Non-HP Paper Type	Printing Black	Ink Limiting	Print Mode (Best)			Auto Cutter
				RR	PR	OI	
Coated Paper	Super Heavyweight Coated	All	48	600	1200x1200	10p bidi	Y
	Heavyweight Coated Paper	All	30			10p bidi	Y
	Coated Paper	All	24			8p bidi	Y
	Coated Paper (CAD)	All	24			6p Uni	Y
Plain Paper	Plain Paper	All	22	600	1200 x1200	4p bidi	Y
	Bright White Bond Paper	All	22	600	1200 x1200	4p bidi	Y
Photo Paper	Photo Gloss Paper	pklg	38	600	600 x1200	16p bidi	Y
	Photo Gloss Paper (more ink)	pklg	45			16p bidi	Y
	Photo Gloss Paper (less ink)	pklg	32			16p bidi	Y
	Photo Semi-gloss/Satin paper	pklg	38			16p bidi	Y
Fine Art Paper	Canvas	All	38	600	1200x1200	10p Uni	N
	Fine Art paper	All	42			10p bidi	N
Backlit Material	Backlit material	All	72	600	1200x1200	12p Uni	Y
Banner & Sign Material	Indoor Banner	All	45	600	600x1200	16p bidi	Y
	Scrim Banner	All	54	600	1200x1200	10p bidi	Y
Technical Paper	Natural Tracing Paper	All	22	600	1200x1200	4p bidi	Y
	Translucent Bond	All	22	600	1200x1200	4p bidi	Y
	Vellum	All	22	600	1200x1200	4p bidi	Y

Film	Transparent film	All	24	600	600x1200	16p Bidi	Y
	Matte Film	All	24	600	600x1200	16p Bidi	Y
Proofing Paper	Proofing Semi Gloss/Satin	pklg	38	600	600x1200	16p bidi	Y
	Proofing Gloss Paper	pklg	38	600	600x1200	16p bidi	Y
	Proofing Matte Paper	All	30	600	1200x1200	10p bidi	Y
Self-Adhesive Material	Adhesive Polypropylene	All	38	600	1200x1200	10p Uni	Y
	Adhesive Vinyl	All	32	600	1200x1200	10p Uni	Y

	HP Paper Type	Printing Black	Ink Limiting	Print Mode (Best)			Auto Cutter
				RR	PR	OI	
Bond & Coated Paper	HP Coated Paper	All	24	600	1200x1200	8p bidi	Y
	HP Coated Paper (CAD)	All	24	600	1200x1200	6p Uni	Y
	HP Universal Coated Paper	All	24	600	1200x1200	8p bidi	Y
	HP Universal Coated Paper (CAD)	All	24	600	1200x1200	6p Uni	Y
	HP Heavyweight Coated Paper	All	30	600	1200x1200	10p bidi	Y
	HP Universal Heavyweight Coated Paper	All	30	600	1200x1200	10p bidi	Y
	HP Universal Inkjet Bond Paper	All	22	600	1200x1200	4p bidi	Y
Photo Paper	HP Premium Instant-Dry Gloss	pklg	45	600	1200x1200	16p bidi	Y
	HP Premium Instant-Dry Satin	pklg	45				Y
	HP Universal Instant-Dry Gloss	pklg	38				N

	HP Universal Instant-Dry Semi Gloss	pklg	38	600	1200x1200	16p bidi	N
Proofing Paper	HP High-Gloss Contract Proofing paper	pklg	45			16p bidi	Y
	HP Semi-Gloss Contract Proofing paper	pklg	45				Y
	HP Proofing Matte	All	30			10p bidi	Y
Fine Art paper	HP Collector Satin Canvas	All	42			10p Uni	N
	HP Professional Matte Canvas	All	38			10p Uni	N
	HP Aquarella Art Paper	All	42			10p bidi	N
	HP Artist Matte Canvas	All	44	600	1200x1200	10p Uni	N
	HP Universal Matte Canvas	All	38			10p Uni	N
	HP Smooth Fine Art Paper	All	42			10p Uni	N
	HP Textured Fine Art Paper	All	42	600	1200x1200	10p bidi	Y
	HP Matte Litho-realistic Paper	All	48	600	1200x1200	10p Uni	N
Backlit Material	HP Premium Vivid Color Backlit	All	72	600	1200x1200	12p Uni	Y
Banner & Sign Material	HP Instant-dry Indoor Banner, Gloss	Pklg	54	600	1200x1200	16p bidi	Y
	HP Opaque Scrim Banner	All	45	600	1200x1200	10p Uni	N

IMPORTANT NOTE: Please take special attention to the following recommendations

- Do not use the cutter on canvas paper and Fine Arts papers.

Downloading Media Profiles

A '**Media Profile**' is a file that contains the set of instructions of how the printer is going to print on the media. It resides in your printer's firmware or it can be downloaded from a web page to update your printer's firmware for a new paper type.

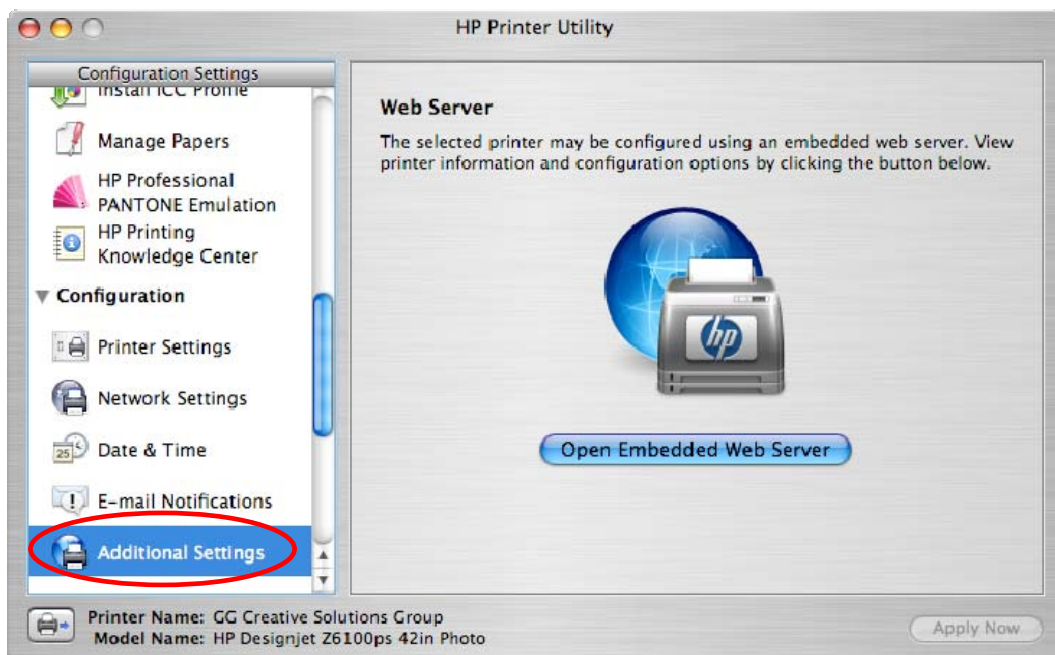
In case you need to download a Media Profile from the **HP Knowledge Center**, you can use the links here:

Z6100

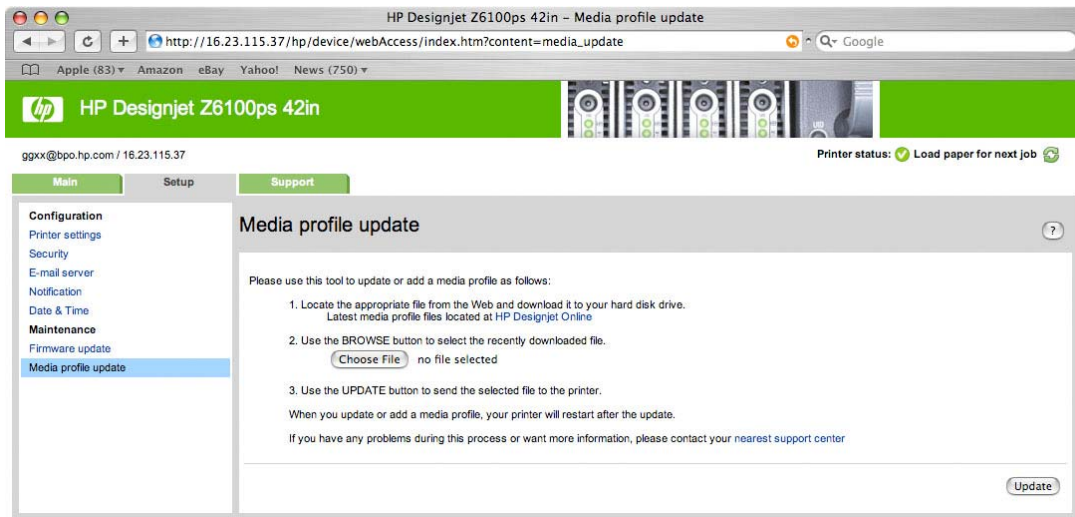
http://www.hp.com/go/knowledge_center/djz6100

Steps for Macintosh users:

1. Download the Media Profile from HP Knowledge Center website
2. Save the Media Profile file to your computer
3. Go to the HP Printer Utility and select "Additional Settings".
4. Select the "Open Embedded Web Server" button.



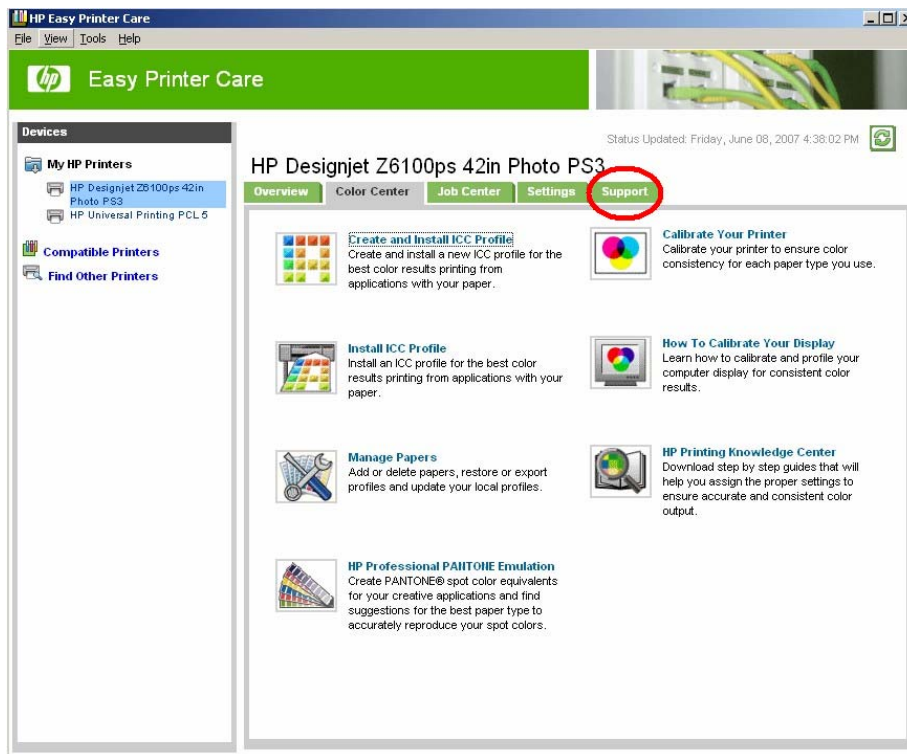
5. Use the browser to go to the "Setup" tab, select "Media profile update" to search and install your downloaded Media Profile. Your printer front panel will display the updating process. When your printer is updated, your printer will restart automatically.



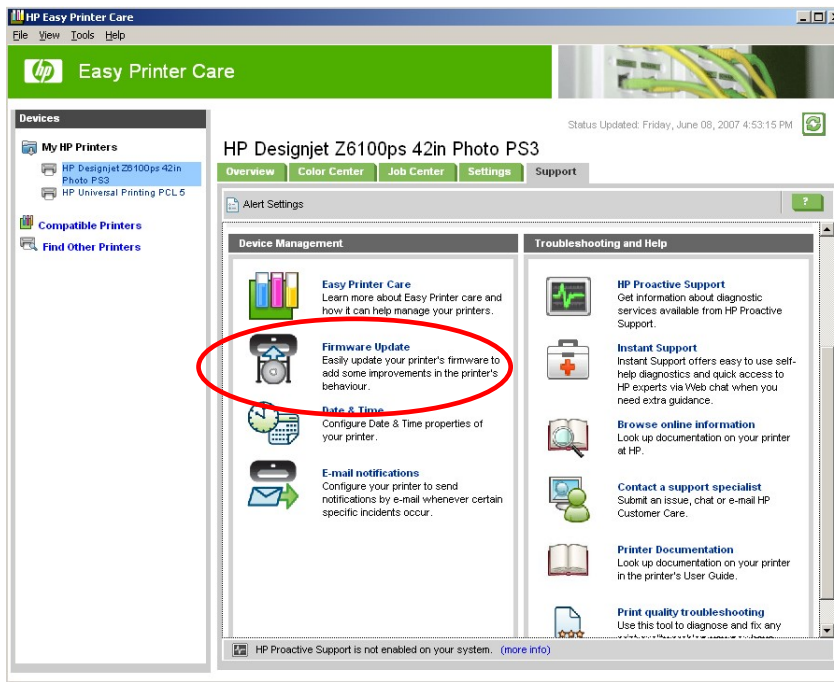
6. Restart the HP Printer Utility. Now your new media profile appears in Front Panel, inside the **Custom** category.

Steps for Macintosh users:

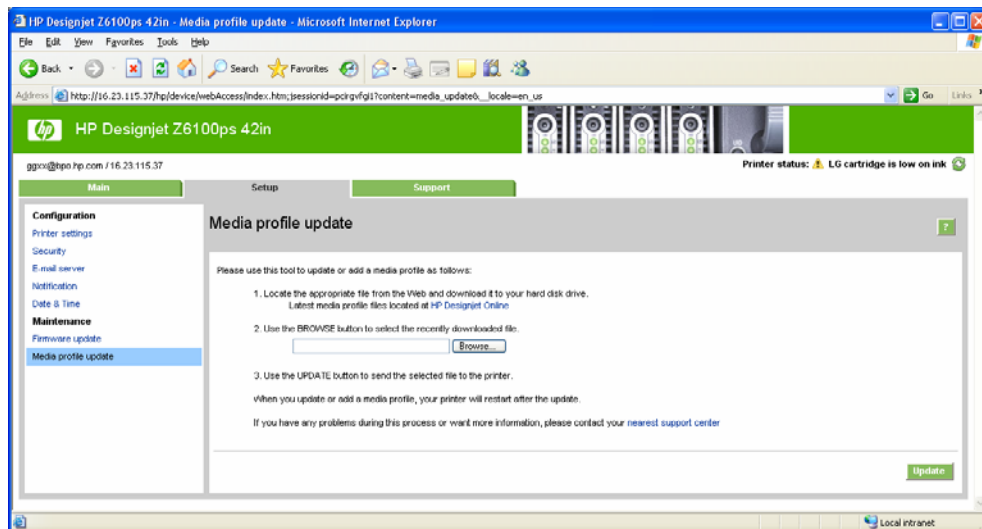
1. Open the HP Easy Printer Care and select the “Support” option. There you will find the following options.



2. Then Select “Firmware Update” option.



3. Select "Media profile update". Use the browser to select the Media Profile file from your computer, and select it to update. The front panel will display the updating process. When your printer is updated, your printer restarts automatically.



4. Synchronize your printer with the Easy Printer Care refresh button. Now your new media profile appears in Front Panel, inside the Custom category.

Different ways to work with non-hp paper

After selecting which setting you have to use for your non-HP paper (refer to the section [List of Non-HP papers & recommended settings](#) on page 3) if your paper is in this list. Otherwise, find the most accurate setting with the table [Selecting the media profile that best matched your needs](#) (page 5), you also have to calibrate and profile the paper in order to get the optimal color accuracy. You can also calibrate and use a 3rd party ICC profile instead of creating one with the HP Embedded Spectrophotometer.

To help you through this process, follow the step by step description of the four possible scenarios:

Case 1: Recommended media profile is in the Firmware 3.X version and I would like to create an ICC profile with the HP Color Center ([page 13](#))

Case 2: Recommended media profile is in the Firmware 3.X version and I already have an ICC profile for my paper ([page 17](#))

Case 3: Recommended media profile can be found in the HP Knowledge Center and I would like to create an ICC profile with the HP Color Center ([page 22](#))

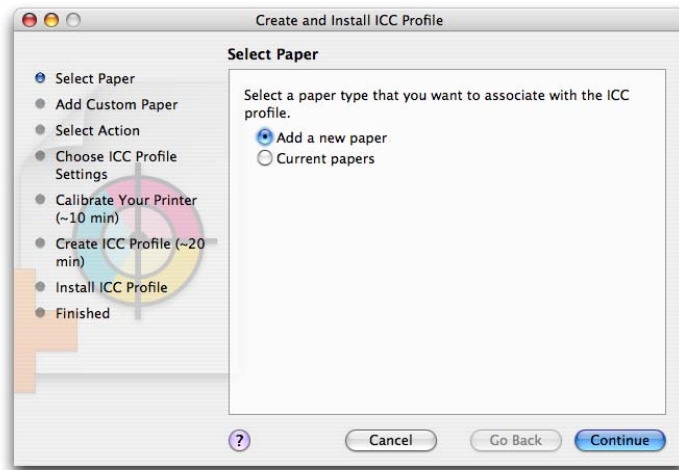
Case 4: Recommended media profile can be found in the HP Knowledge Center and I already have an ICC profile for my paper ([page 25](#))

In the next pages you will find step by step instructions depending on the case and your operating system.

Case 1: Recommended paper preset is in the Firmware 3.X version and I would like to create an ICC profile with the HP Color Center

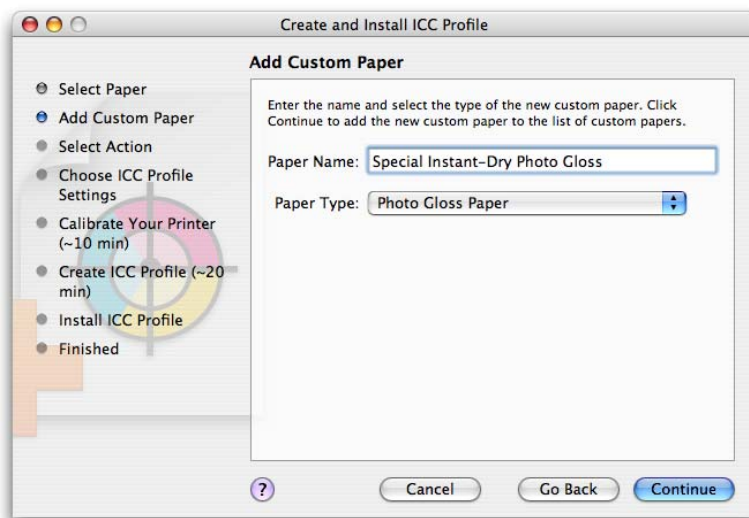
Steps for Macintosh users:

1. Select your Paper Type from Front Panel
2. Go Color Center and select “[Create and Install ICC Profile](#)” There you will find the following options:



Screenshot from HP Print Utility - MAC OS X version

3. Select “[Add New Paper.](#)”
4. Create a name for your paper (which will be displayed in the driver and in the front panel) and select a paper category which is similar to the type of paper you have.



Screenshot from MAC OS X version – HP Print Utility

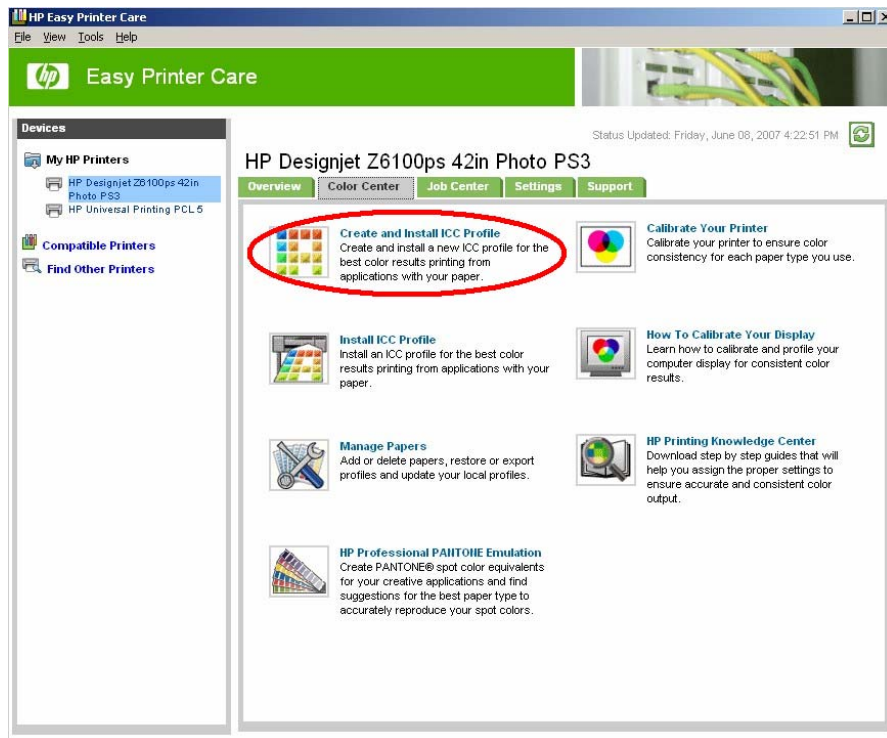
5. Select the appropriate Media profile. Just select the same entry as shown in “[Front Panel & Driver selection](#)” table on page 3. This **is the most important step**, since you are in

fact determining a number of basic parameters for printer-paper interaction. Among others, these include: ink limiting, maximum density and color transition linearity thresholds. You can adjust these for your particular print paper by selecting the applicable paper type.

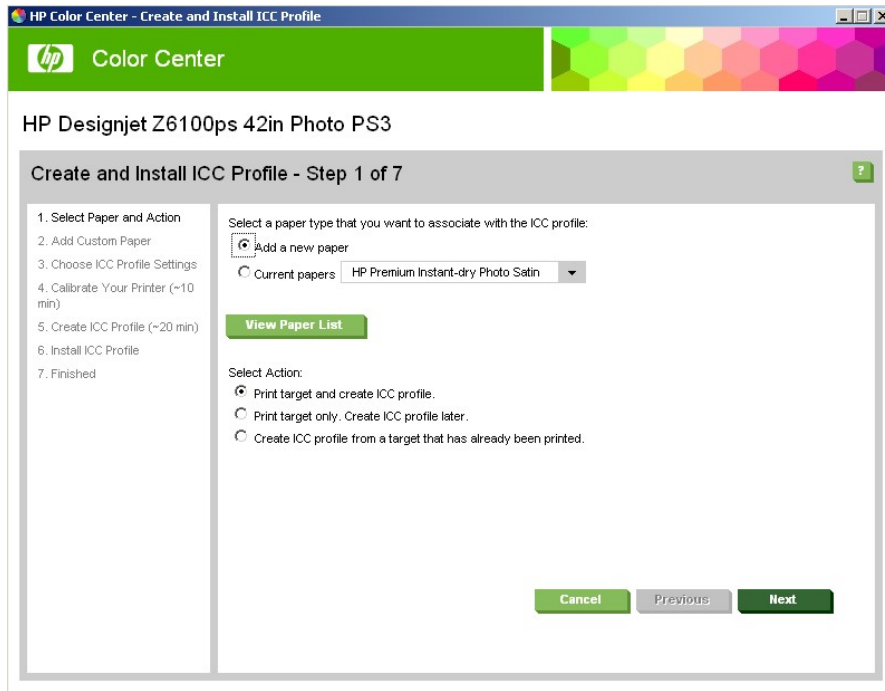
6. The printer will then perform the color calibration (maximum density and linearity for each ink) and color profiling (creating an ICC profile) for your custom paper, which will ensure the best possible output quality.
7. Lastly, the HP Color Center will automatically install the profile in the computer that has launched the process. If you are using your printer from another computer, remember to synchronize papers before moving forward. The process is now complete.

Steps for Windows users:

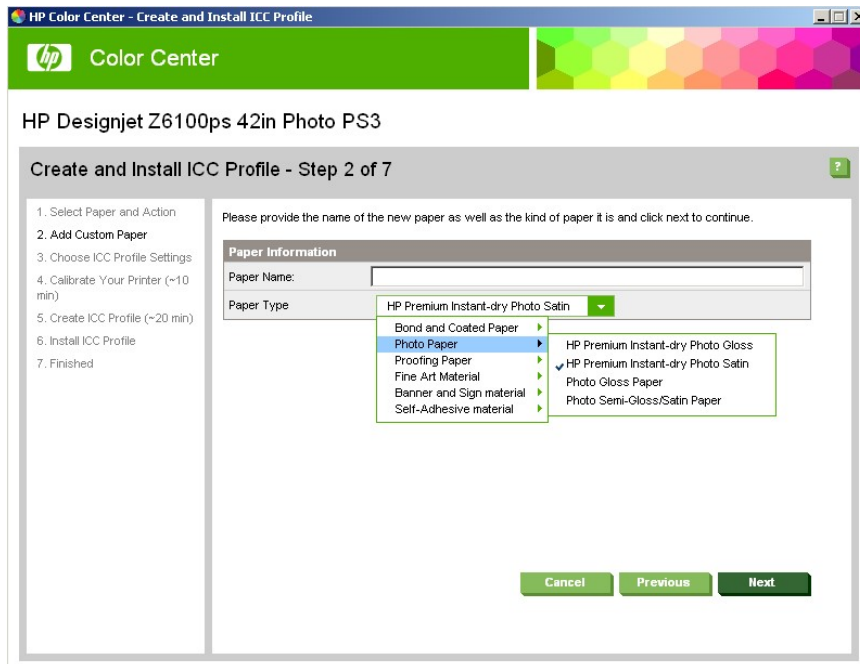
1. Select your Paper Type from Front Panel. **“NON-HP PAPERS & PAPER SETTINGS RECOMMENDED”** (Page 2 and 3)
2. Open Easy Printer Care, select **“Create and Install ICC Profile”** There you will find the following options:



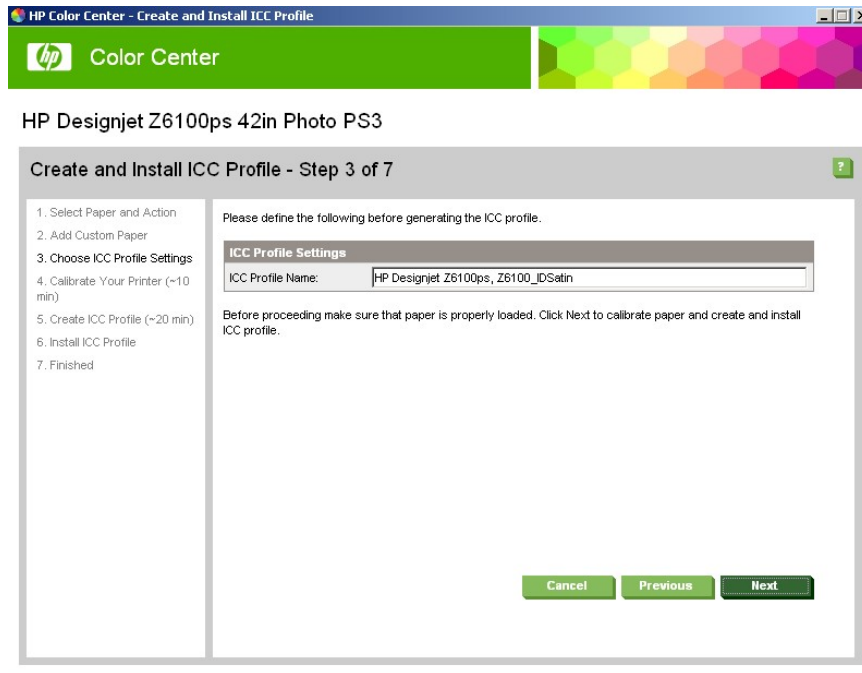
3. Then, select **“Add New Paper.”**



- The next step will be to create a name for your paper (which will appear both in the driver and in the front panel) and to select a paper category that is similar to the type of paper you have.



- The next step is **selecting the appropriate media profile**. This is the most **important step**, since you are in fact determining a number of basic parameters for printer-paper interaction. Among others, these include: ink limiting, maximum density and color transition linearity thresholds. You can adjust these for your particular print paper by selecting the applicable paper type.

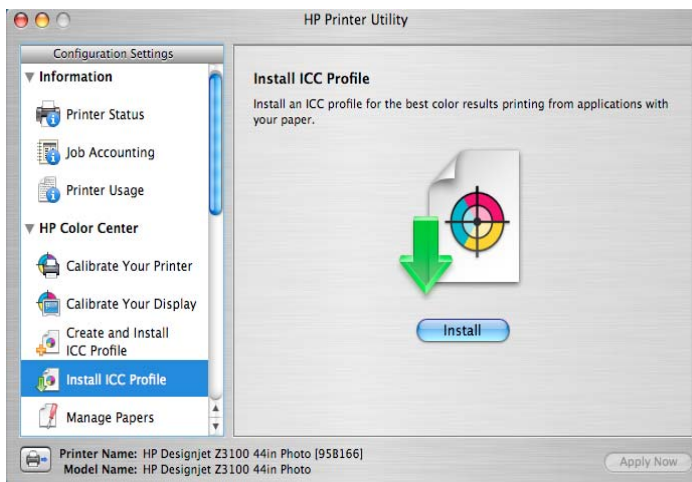


6. The printer will then perform the color calibration (maximum density and linearity for each ink) and color profiling (creating an ICC profile) for your custom paper, which will ensure the best possible output quality.
7. Lastly, the HP Color Center will automatically install the profile in the computer that has launched the process. If you are using your printer from another computer, remember to synchronize papers before moving forward. The process is now complete.

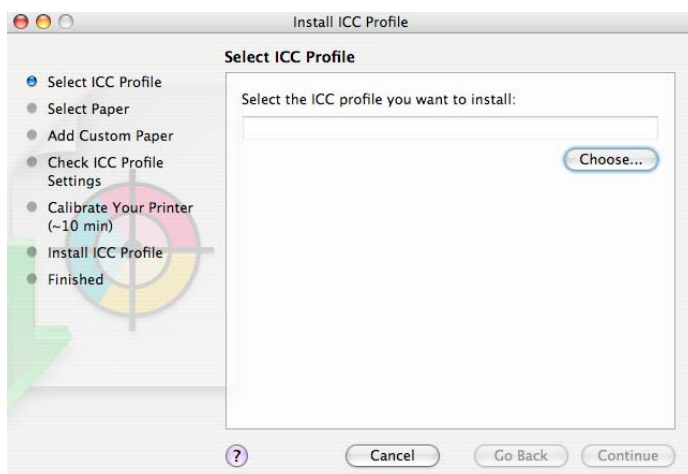
Case 2: Recommended media profile is in the Firmware 3.X version and I already have an ICC profile for my paper

Steps for Macintosh users:

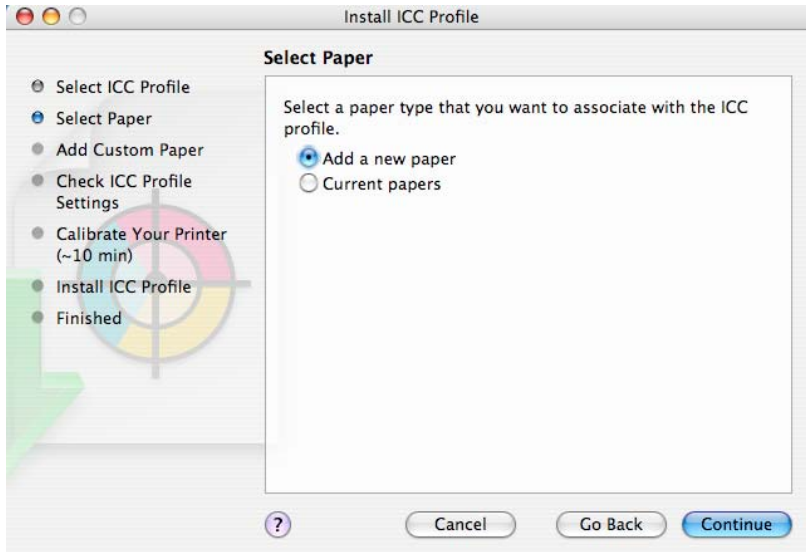
2. Select your Paper Type from Front Panel. **“NON-HP PAPERS & PAPER SETTINGS RECOMMENDED”** (Page 2 and 3)
3. Go to the Color Center and select **“Install ICC Profile”**, select the Install button. There you will find the following options



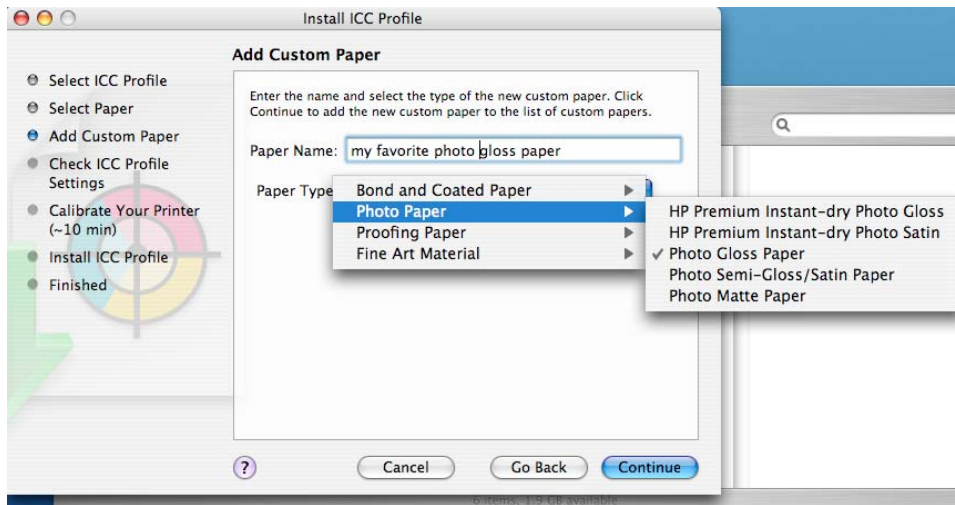
4. Use the browser below to use your personal ICC profile, select the Choose button.



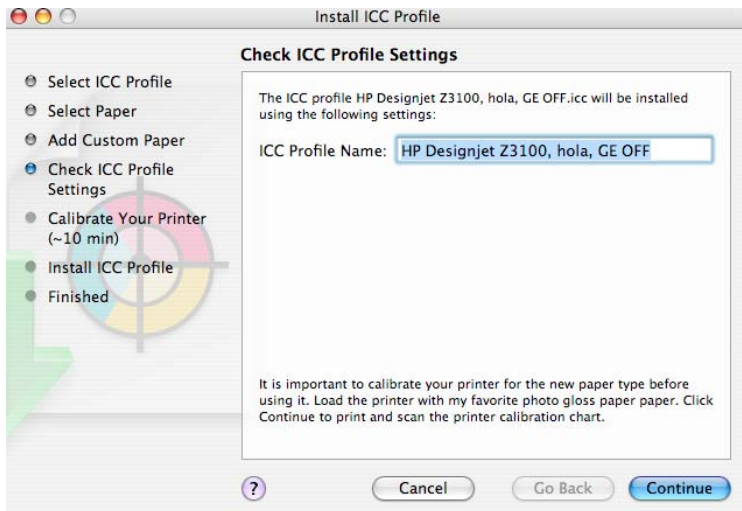
5. In the next window, select the “Add a new paper” option to create a new paper with your personal ICC profile.



6. Create a name for your paper (which will be displayed both in the driver and in the front panel) and select a paper category that is similar to the type of paper you have.



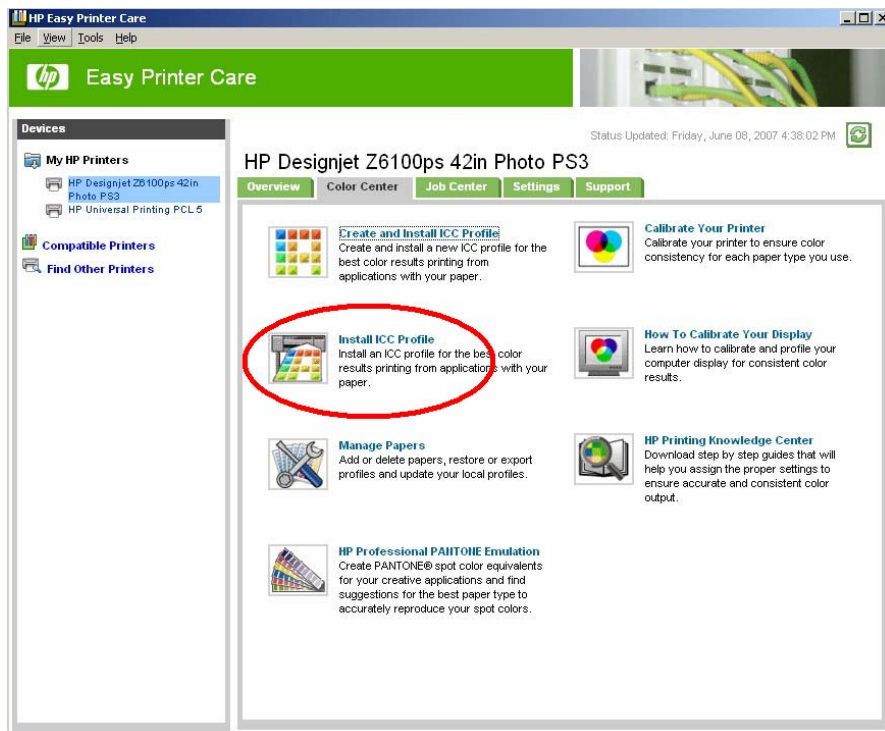
7. Check your ICC profile settings.



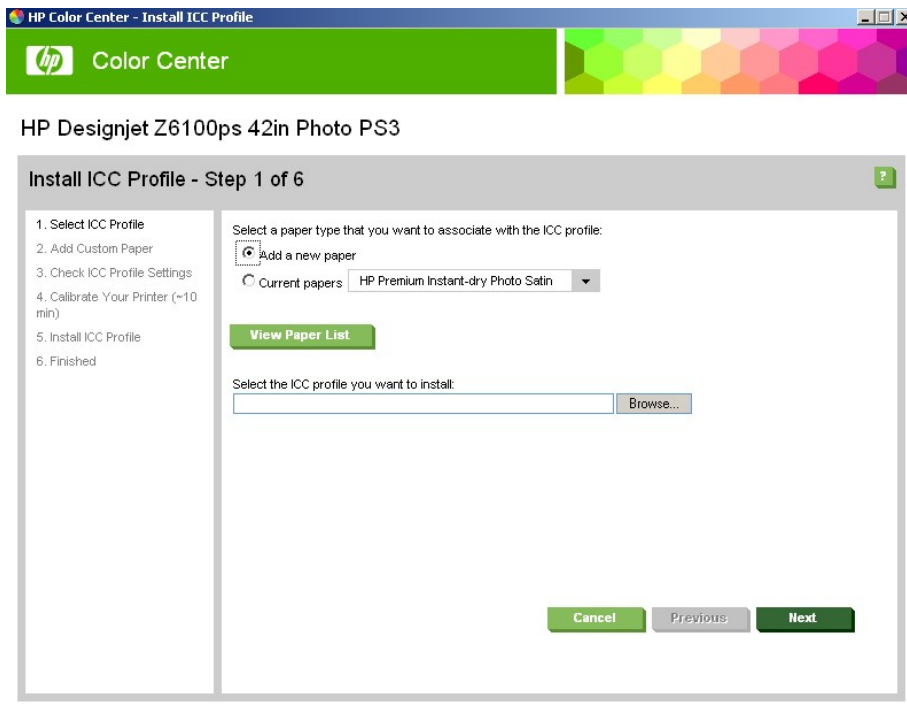
8. The printer will then perform the color calibration for your custom paper (maximum density and linearity for each ink), which will ensure the best possible output quality.
9. Lastly, the HP Color Center will automatically install the profile in the computer that has launched the process. If you are using your printer from another computer, remember to synchronize papers before moving forward. The process is now complete.

Steps for Windows users:

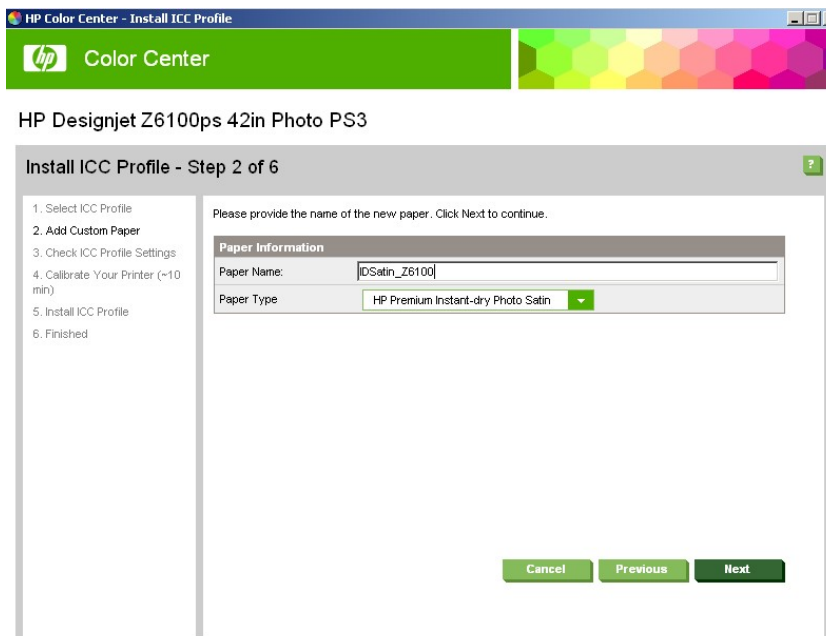
1. Select your Paper Type from Front Panel. **“NON-HP PAPERS & PAPER SETTINGS RECOMMENDED”** (Page 2 and 3)
2. Open Easy Printer Care, select **“Install ICC Profile”**. There you will find the following options.



3. Then Select **“Add New Paper”** and use the browser below to use your personal ICC profile.



4. Create a name for your paper (which will be displayed both in the driver and in the front panel) and to select a paper category that is similar to the type of paper you have.



8. The next step is **selecting the appropriate media profile**. Just select the same entry as shown in **“Front Panel & Driver selection”** table on page 3. This **is the most important step**, since you are in fact determining a number of basic parameters for printer-paper interaction. Among others, these include: ink limiting, maximum density and

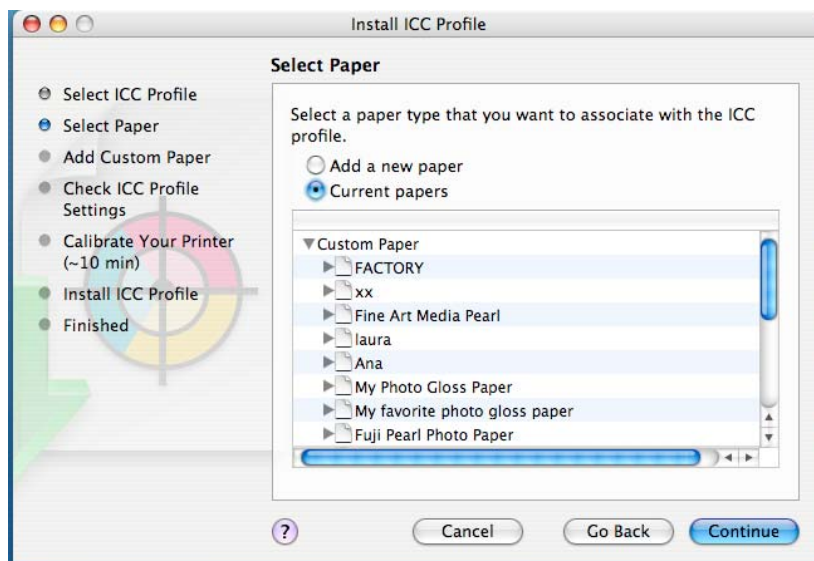
color transition linearity thresholds. You can adjust these for your particular print paper by selecting the applicable paper type.

9. The printer will then perform the color calibration for your custom paper (maximum density and linearity for each ink), which will ensure the best possible output quality.
10. Lastly, the HP Color Center will automatically install the profile in the computer that has launched the process. If you are using your printer from another computer, remember to synchronize papers before moving forward. The process is now complete.

Case 3: Recommended media profile is in the HP Knowledge Center and I would like to create an ICC profile with the HP Color Center

Steps for Macintosh users:

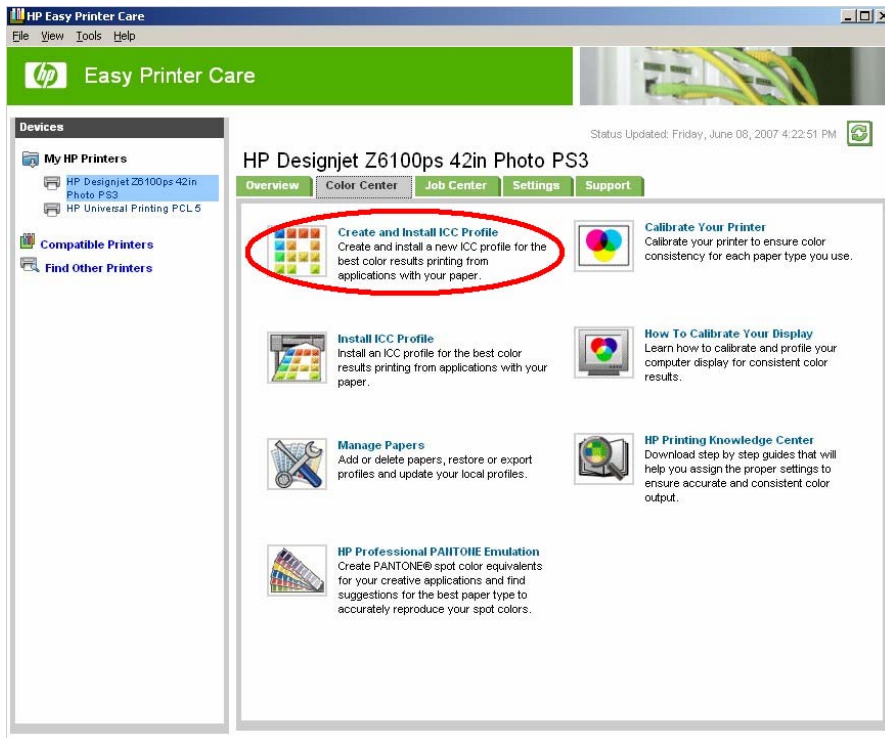
1. Download the Media Profile from HP Knowledge Center website and install it on the Z6100 printer (see page 9)
2. Synchronize your computer with your printer
3. Go to [“Create and Install ICC Profiles”](#)
4. Select [“Current Paper”](#) and choose the paper that you need, and select the paper category. This step is **selecting the appropriate Media profile**. This is the **most important step**, since you are in fact determining a number of basic parameters for printer-paper interaction. Among others, these include: ink limiting, maximum density and color transition linearity thresholds. You can adjust these for your particular print paper by selecting the applicable paper type.



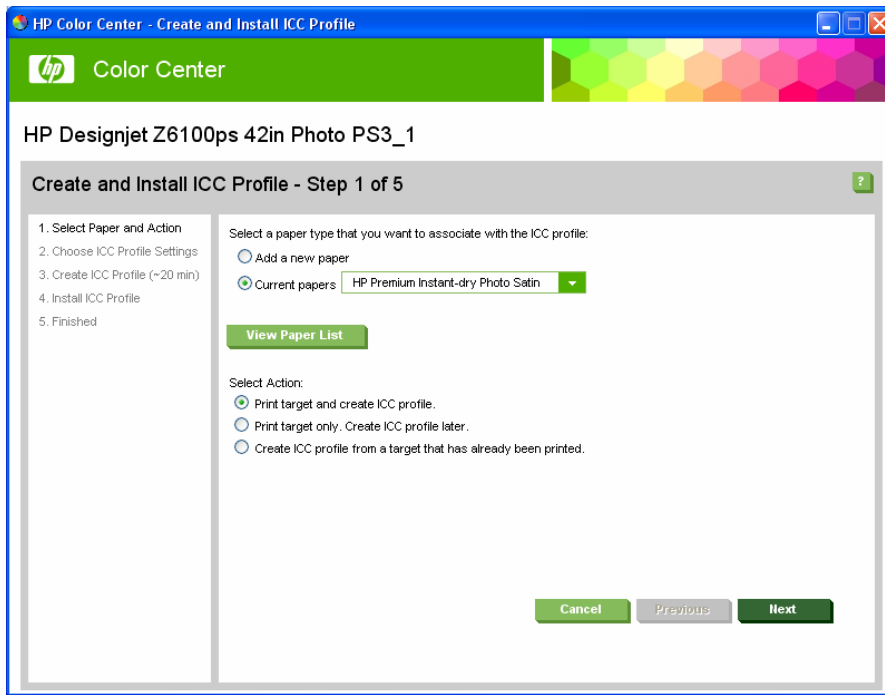
5. The printer will then perform the color calibration (maximum density and linearity for each ink) and color profiling (creating an ICC profile) for your custom paper, which will ensure the best possible output quality.
6. Lastly, the HP Color Center will automatically install the profile in the computer that has launched the process. If you are using your printer from another computer, remember to synchronize papers before moving forward. The process is now complete.

Steps for Windows users:

1. Download the media profile from HP Knowledge Center website and install it on the Z6100 printer (see page 9)
2. Synchronize your computer with your printer
3. Go to [“Create and Install ICC Profiles”](#)



5. Select [“Current Papers”](#), inside custom category select the media profile that you downloaded previously



9. The next step is **selecting the appropriate media profile**. Just select the same entry as shown in “[Front Panel & Driver selection](#)” table on page 3. This **is the most important step**, since you are in fact determining a number of basic parameters for printer-paper interaction. Among others, these include: ink limiting, maximum density and color transition linearity thresholds. You can adjust these for your particular print paper by selecting the applicable paper type.

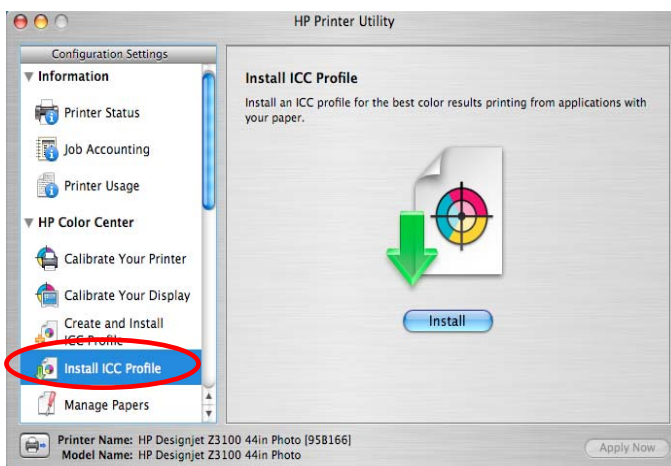
10. The printer will then perform the color calibration (maximum density and linearity for each ink) and color profiling (creating an ICC profile) for your custom paper, which will ensure the best possible output quality.

11. Lastly, the HP Color Center will automatically install the profile in the computer that has launched the process. If you are using your printer from another computer, remember to synchronize papers before moving forward. The process is now complete.

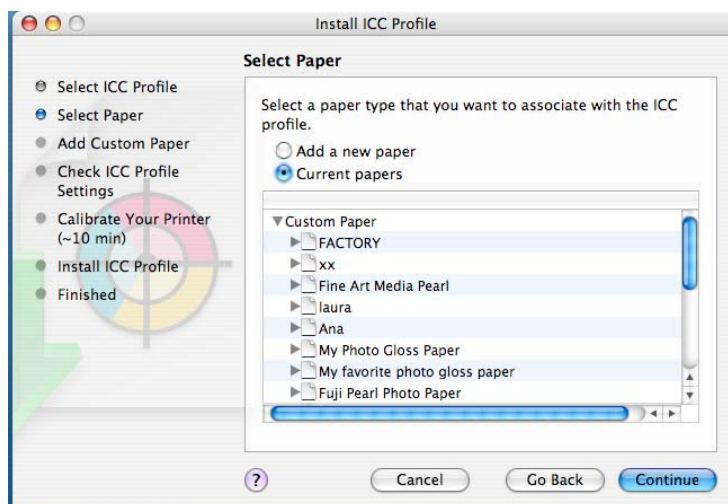
Case 4: Recommended media profile is in the HP Knowledge Center and I already have an ICC profile for my paper

Steps for Macintosh users:

1. Download the Media Profile from HP Knowledge Center website and install it on the Z6100 printer (see page 9)
2. Synchronize your computer with your printer
3. Go to the HP Printer Utility and select “Install ICC Profile”, select the Install button.



4. You will find the following options:

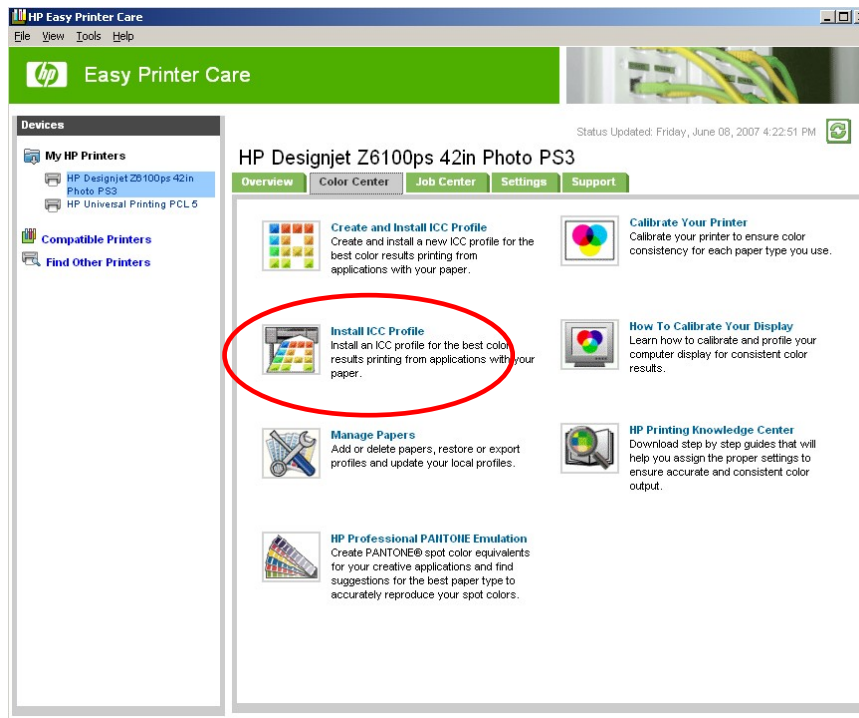


5. Select “Current Paper” and choose the paper that you need, and select the paper category. This step is **selecting the appropriate Media profile**. This is the **most important step**, since you are in fact determining a number of basic parameters for printer-paper interaction. Among others, these include: ink limiting, maximum density and color transition linearity thresholds. You can adjust these for your particular print paper by selecting the applicable paper type.

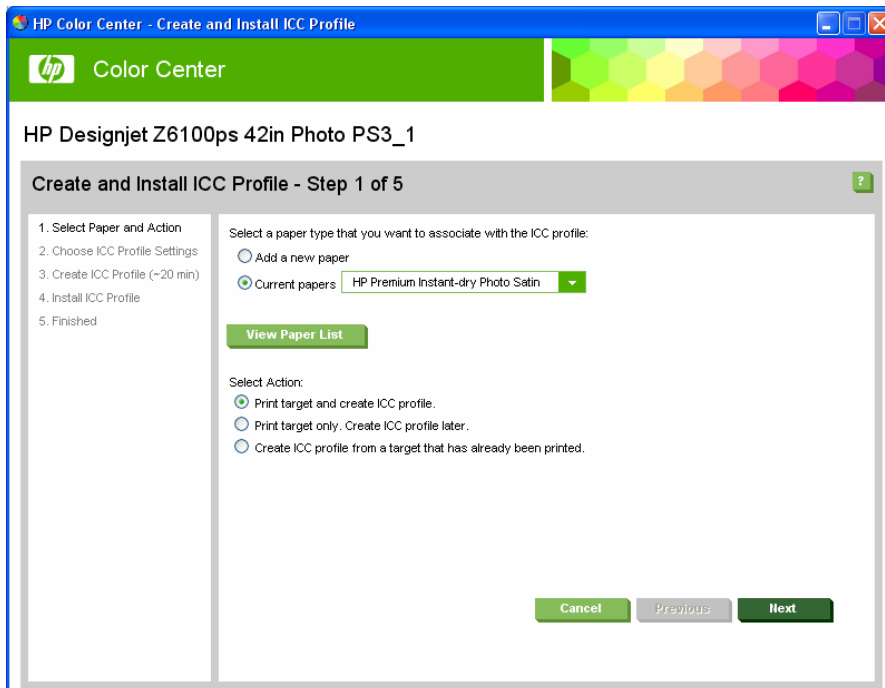
6. The next step is **selecting the appropriate media profile**. Just select the same entry as shown in “[Front Panel & Driver selection](#)” table on page 3. This **is the most important step**, since you are in fact determining a number of basic parameters for printer-paper interaction. Among others, these include: ink limiting, maximum density and color transition linearity thresholds. You can adjust these for your particular print paper by selecting the applicable paper type
7. The printer will then perform the color calibration for your custom paper (maximum density and linearity for each ink), which will ensure the best possible output quality.
8. Lastly, the HP Color Center will automatically install the profile in the computer that has launched the process. If you are using your printer from another computer, remember to synchronize papers before moving forward. The process is now complete.

Steps for Windows users:

1. Download the media profile from HP Knowledge Center website and install it on the Z6100 printer (see page 9)
2. Open the HP Easy Printer Care, and select “[Install ICC Profile](#)”. There you will find the following options:



3. Select “Current Paper” and use the browser shown below to use your personal ICC profile



4. The next step is **selecting the appropriate media profile**. Just select the same entry as shown in “[Front Panel & Driver selection](#)” table on page 3. This **is the most important step**, since you are in fact determining a number of basic parameters for printer-paper interaction. Among others, these include: ink limiting, maximum density and color transition linearity thresholds. You can adjust these for your particular print paper by selecting the applicable paper type.
5. The printer will then perform the color calibration for your custom paper (maximum density and linearity for each ink), which will ensure the best possible output quality.
6. Lastly, the HP Color Center will automatically install the profile in the computer that has launched the process. If you are using your printer from another computer, remember to synchronize papers before moving forward. The process is now complete.

Important Recommendations

How can I work adding a new paper which is based on a Non-HP Paper Type under Custom Category.

Please note that when using "HP Easy Printer Care" on the Windows platform, due to driver architecture, it is possible to incorrectly select in step #3 the option "Add New Paper" and select a paper listed under the "Custom" category.

This option is NOT recommended, since once the ICC profile has been made, the results will not be as good as expected, colors will not be accurate.

Notice however that this problem will not appear if you select a paper that is not in the "Custom" category, it is part of one of the following paper categories:

- " Bond and Coated Paper "
- " Photo Paper "
- " Proofing Paper"
- " Fine Art Material "
- " Banner and Sign material "
- " Self-Adhesive material "

How can I work with different type of papers based in the same "Custom Paper Type"?

In some cases, I can have a custom paper type that I would like to use with different types of papers of my preferred vendors (e.g: when I download a media profile that is under "Custom Paper Type" and I want to check the behavior with different type of papers). I can't add a new paper using the "Custom Paper Type", as noted above to avoid ICC profile issues, I would need to do something different.

In this case, it is recommended loading all my papers with the same custom paper type that was added previously and is available from the front panel, under the custom paper types. Even though I've loaded all the papers under the same option in the printer; I can still generate a different ICC profile for every one and then save it with a different name (a name easy to remember with the vendor's paper name for example). Every time I want to use one of these papers, I need to load it and select it from the front panel name, launch a Color Calibration (it will be different for every type of paper and it is important to do so every time we change the paper) and when printing select, the right ICC profile. It can be done in Photoshop by selecting the following options:

- Application Managed Colors.
- Printer Profile: put the name of the ICC profile associated with the paper
- And in the driver:
 - Application Color Managed
 - Select the custom paper that is in the front panel.

How can I use the same media profile downloaded from HP Knowledge Center (“Custom Paper Type”) for two or more papers?

Part 1: Creating the ICC profiles

For the first paper that you create, follow the steps from page 22 (Macintosh users) or from page 23 (for Windows users). For the rest of papers, perform a Manual Calibration from the printer's Front Panel or from the Printer Utility (Mac)/Easy Printer Care (Windows).

At the end of this process you will have an ICC profile for each different paper that uses the same media profile.

Part 2: Using the ICC profiles

Each time that you load a paper that is using the same media profile as another one you already have, a manual calibration should be started either from the printer's Front Panel or Printer Utility (Mac), Easy Printer Care (Windows), and then print as usual using the ICC profile created in Part 1 for that paper.

Where to download the latest firmware and driver available?

Go to **HP Knowledge Center** at: http://www.hp.com/go/knowledge_center/djz6100
On the right-upper of the page (orange box), click on Drivers, software and firmware tab.

Last information about HP papers

Last information about HP papers is always posted at: www.hp.com/go/designjet/supplies

© 2007 Hewlett-Packard Development Company, L.P. The information contained herein is subject to change without notice. The only warranties for HP products and services are set forth in the express warranty statements accompanying such products and services. Nothing herein should be construed as constituting an additional warranty. HP shall not be liable for technical or editorial errors or omissions contained herein.

