



# HP Wireless Elite Desktop

## Quick Start Guide

FQ481AA

Copyright © 2008 Hewlett-Packard Development Company, L.P.

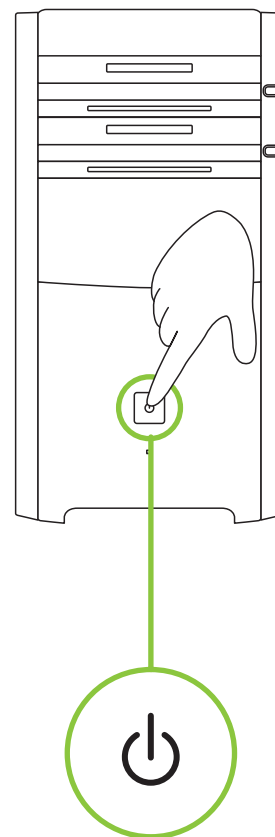
Printed in China

[www.hp.com](http://www.hp.com)

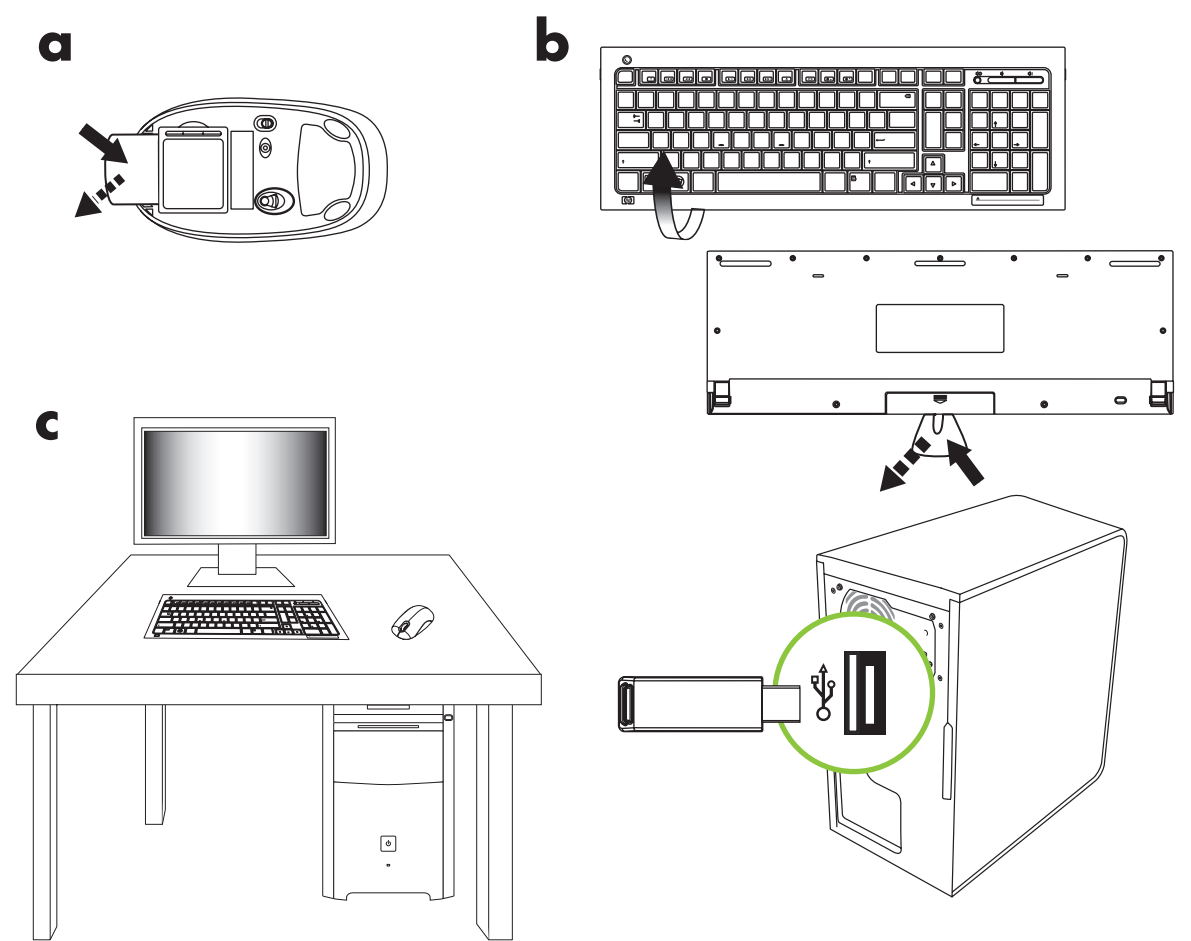
Version 1.0



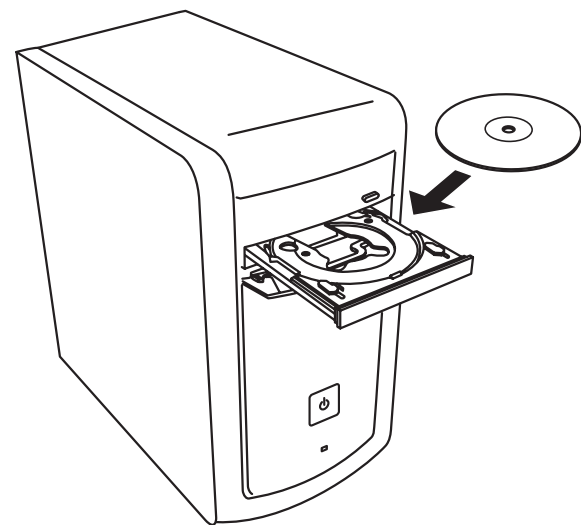
**1**



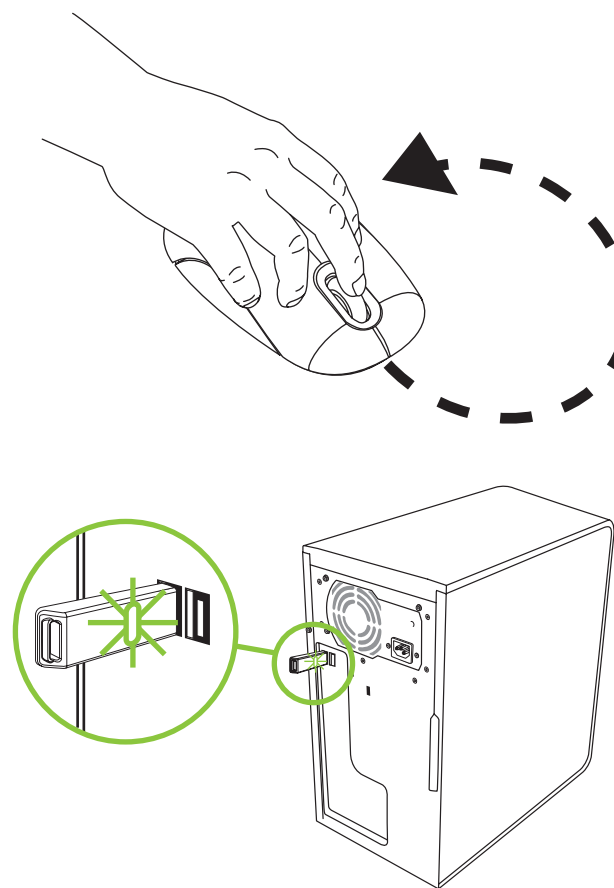
**2**



**3**

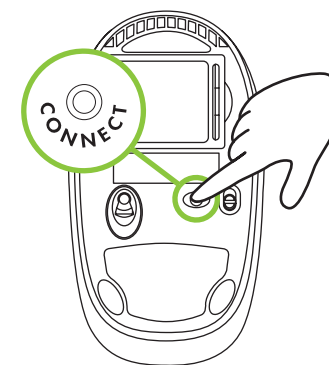


**4**

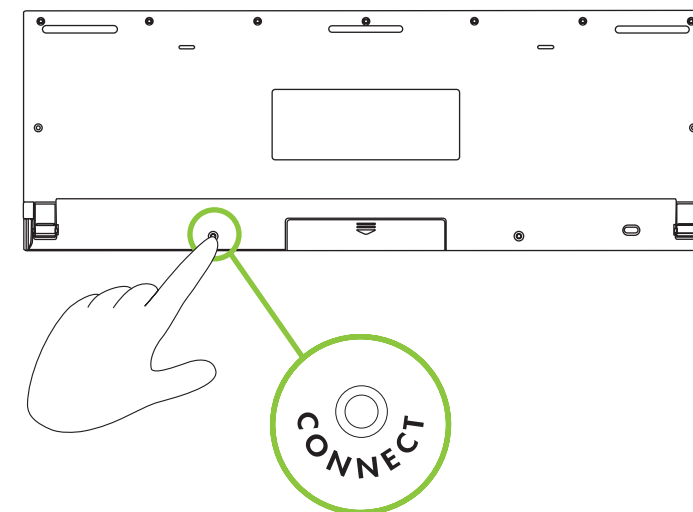


Receiver light should blink and cursor should move on screen. If not, try these steps:

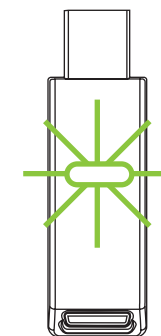
**a**



**b**



**c**





# DECLARATION OF CONFORMITY

according to ISO/IEC 17050-1 and EN 17050-1

**Supplier's Name:** Hewlett-Packard Company  
**Supplier's Address:** Hewlett-Packard Company  
10955 Tantau Ave  
Cupertino, CA 95014

**declares, that the product(s)**

**Product:** HP Wireless Keyboard, Mouse and Receiver  
**Model Number(s):** RK713A, RM713A, RX731A  
**Product Options:** All

**conforms to the following Product Specifications:**

**Safety:** IEC 60950-1:2001 / EN60950-1: 2001+A11:2004  
EN 60825-1: 1994+ A1: 2002 + A2: 2001, Class 1 (Laser/LED)

**EMC:** EN 301 489-3: V1.4.1(2002-08)

EN 55022:2006

EN 55024:1998+A1:2001 +A2:2003

EN 61000-4 SERIES

EN 61000-6-3:2001

EN 61000-6-1:2001

EN 300 440-1:V1.3.1(2001-09)

EN 300 440-2:V1.1.2(2004-07)

AS/NZS 4268:2003

AS/NZS CISPR 22:2006

RSS-210-Gen, Issue2

ANSI C63.4

RSS-210, Issue7

VCCI CLASS B/ITE (V-3/2007 04 21)

VCCI CLASS B/ITE (V-4/2007 04 12)

CFR 47, Part 15

Canadian ICES-003

GB9254-1998

**Supplementary Information:**

The product herewith complies with the requirements of the Low Voltage Directive 2006/95/EC, the EMC Directive 2004/108/EEC and the R&TTE Directive 99/5/EC and carries the "CE Marking" accordingly.

This device complies with Part 15 of FCC rules. Operation is subject to the following two conditions: (1) this device may not cause harmful interference, and (2) this device must accept any interference received, including interference that may cause undesired operation.

Cupertino, CA USA April 17, 2008

**For regulatory compliance information only, contact:**

European Contact: Hewlett-Packard GmbH, HQ-TRE, Herrenberger Straße 140, 71034 Böblingen, Germany  
North America Contact: Hardware Quality Eng. Manager, Hewlett-Packard, CPC, 10955 Tantau Ave., Cupertino, CA 95014