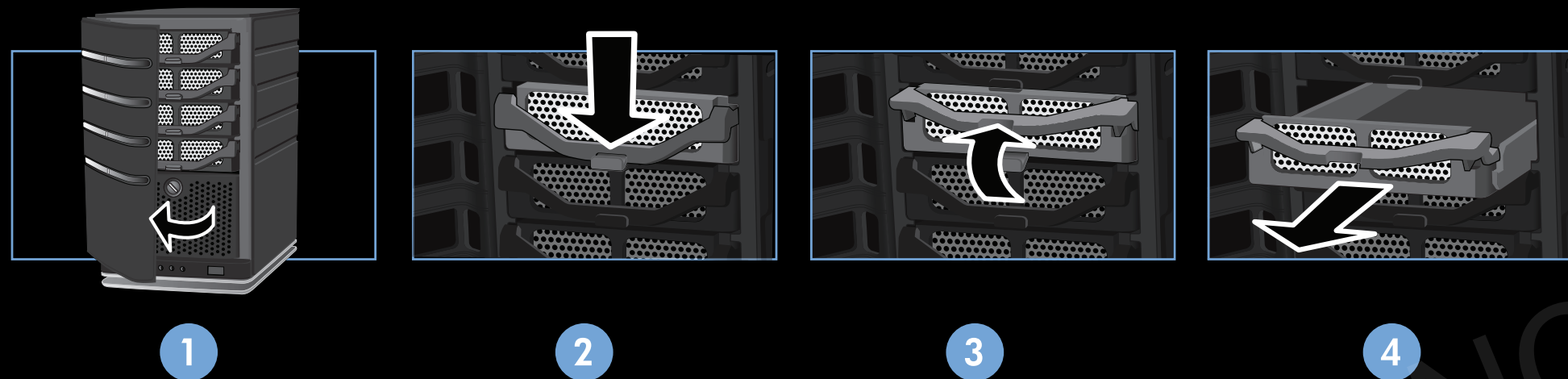
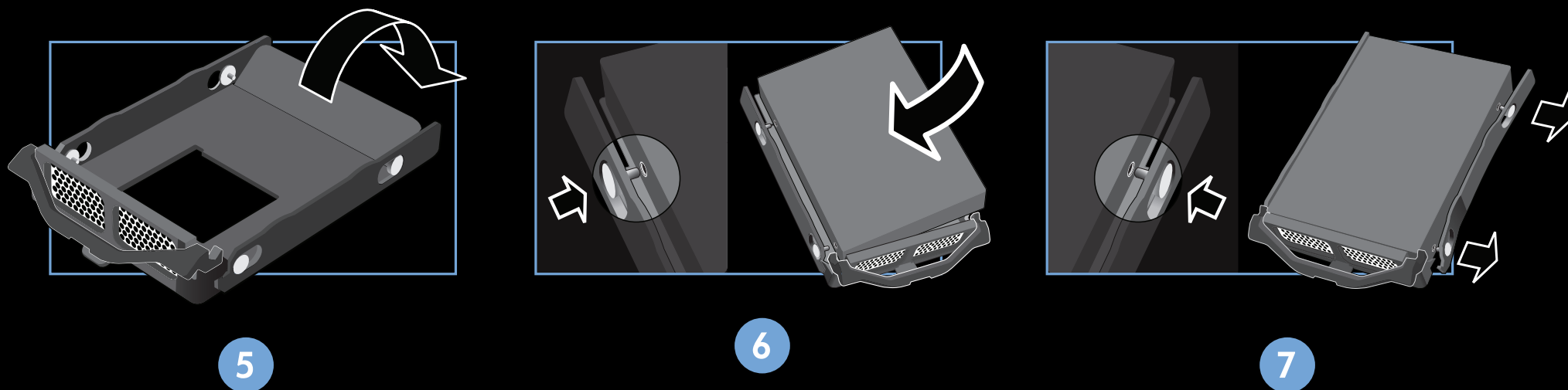


ADDING A SATA DRIVE

- 1 Open the HP MediaSmart Server door.
- 2 On an empty hard drive tray, press the lever down to unlock the handle.
- 3 Lift the handle.
- 4 Gently pull the hard drive tray from the expansion bay.

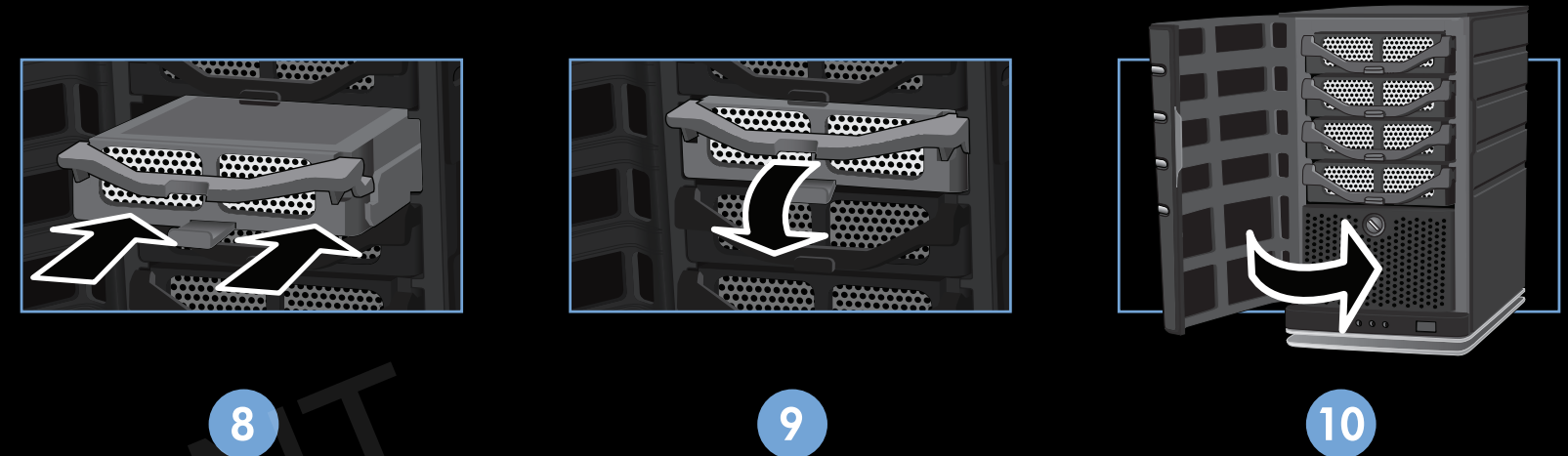


- 5 Fold down the flap near the back of the hard drive tray.
NOTE: The flap improves air flow through the server. If you remove a drive, fold the flap back up.
- 6 Insert a new drive into the left side of the hard drive tray, making sure that the pins go into the hard drive's mounting holes.
- 7 Flex the right side rail, and then insert the pins into the hard drive's mounting holes.



Adding a SATA Drive (continued)

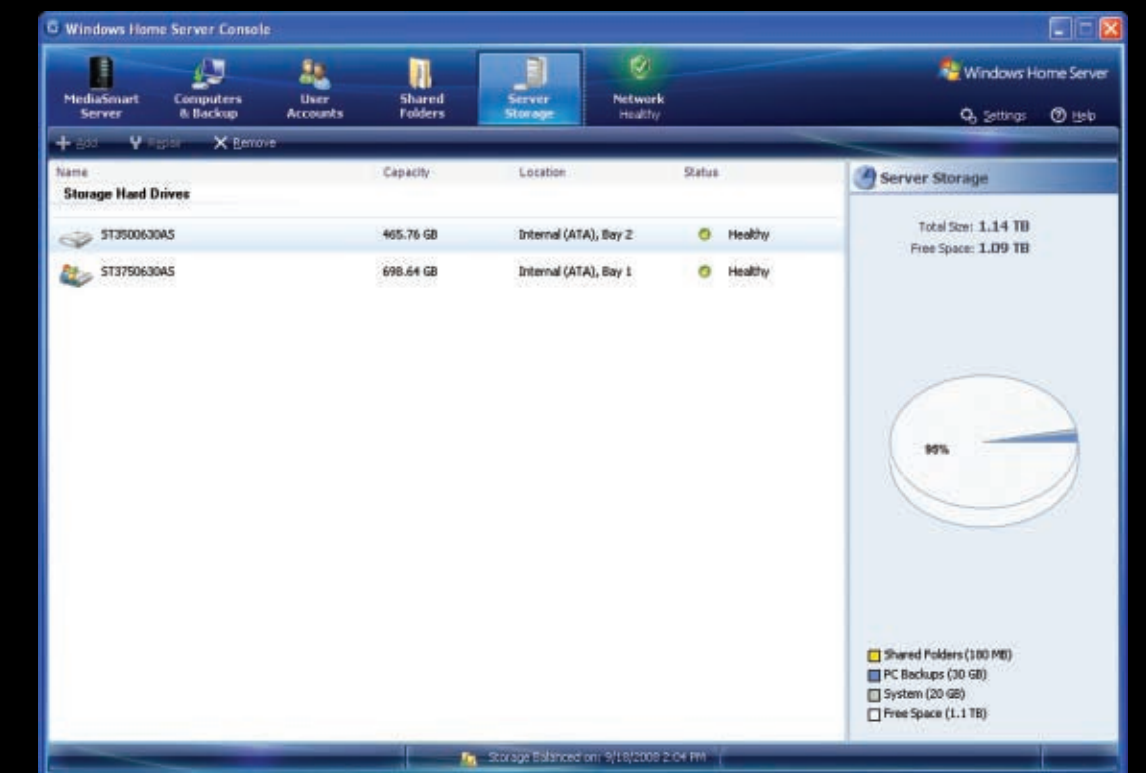
- 8 With the handle up, slide the hard drive tray and drive into the expansion bay.
- 9 Press down on the hard drive tray handle until it locks.
- 10 Close the HP MediaSmart Server door.
NOTE: Within a few seconds the light bar for the new hard drive pulsates aqua white.



ADDING THE DRIVE TO SERVER STORAGE

CAUTION When adding a hard drive to server storage, the hard drive is formatted and any data will be lost. Back up any important files that are on the hard drive before adding it to server storage.

- 1 At the computer, double-click the Windows Home Server icon in the system tray.
- 2 Log on to the Windows Home Server Console.
- 3 Click the Server Storage tab.
- 4 Select the drive and click **Add**.
- 5 Follow the instructions in the **Add a Drive** wizard.



Please visit www.hp.com/support for additional information and technical support.