

HP Designjet T1120 Printer Assembly Instructions

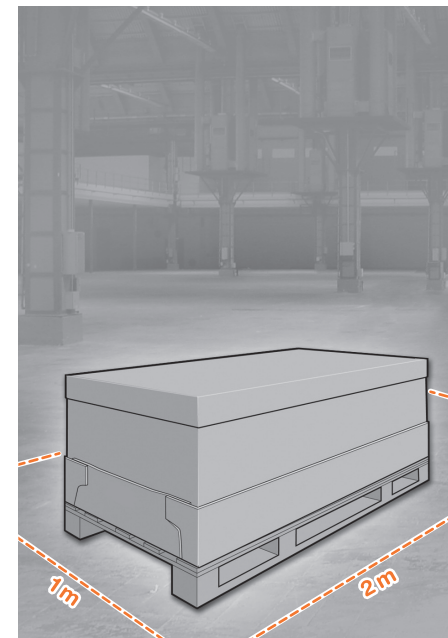
© 2008 Hewlett-Packard Company
Inkjet Commercial Division
Avenida Graells 501 · 08174
Sant Cugat del Valles
Barcelona · Spain

All rights reserved

Printed in Germany · Imprimé en Allemagne · Stampato in Germania



CK840-90011



EN

1 Read these instructions carefully...

What you will need for this procedure

- Because the printer is heavy, you may need three people to unpack it. When more than one person is needed, this symbol is displayed.

- To assemble the printer you will need at least 1 x 2 m (40 x 80 in) of empty floor space.

*Whenever you see this icon, you can find an animation illustrating the procedure on the HP Start-Up Kit DVD.

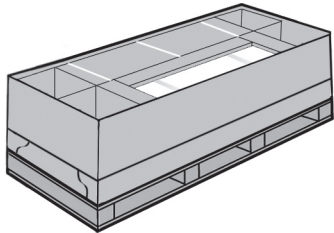


2 Printer working area

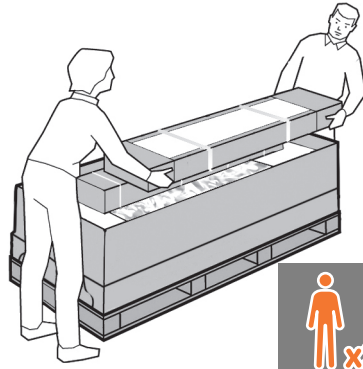
Before you start unpacking, consider where you are going to put the assembled printer. You should allow some clear space on all sides of the printer box. The recommended clearances are shown in the illustration above.

Note: If your printer is 24-in without stand, remove the printer box and the accessories box, place the printer on a table and remove the desiccant bag from below the printer. Then go to step 32.

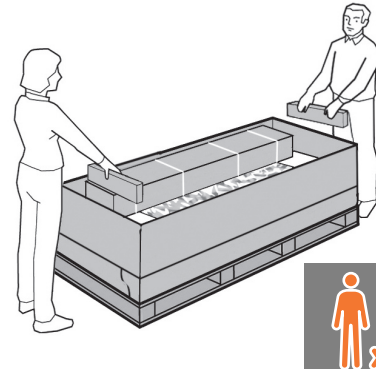
3 Remove the accessories from the printer box. You will find the documentation and software for your printer on top of the printer.



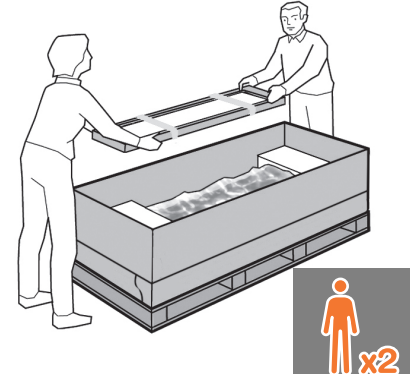
4 Remove the stand box, which is the largest one. To do so you may need two people, one at each end.



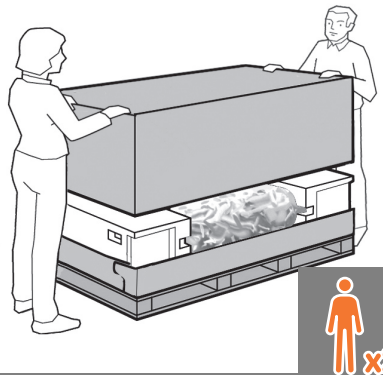
5 Remove the pieces of cardboard.



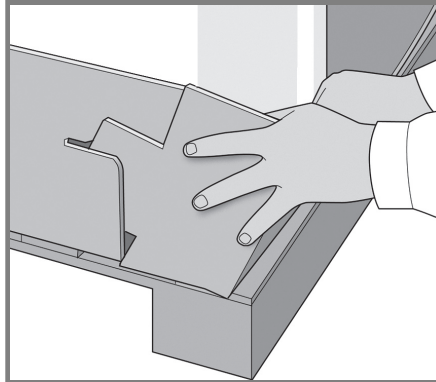
6 Remove the rear tray from the printer box.
Note: If you don't find the tray in the box, it may already be installed.



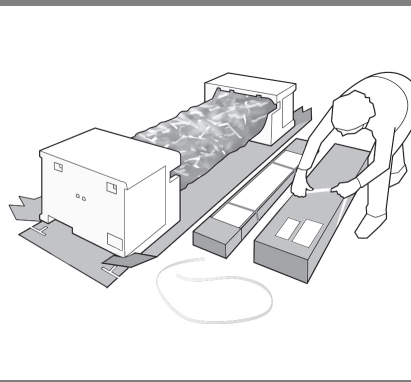
7 Lift up the sides and top of the printer box, and remove them from the printer.



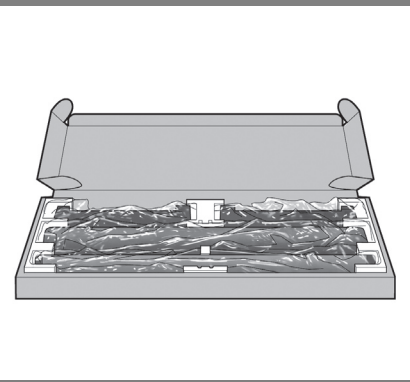
8 Dismantle the bottom of the printer box by disengaging each corner and then folding down the sides so that they are out of the way.



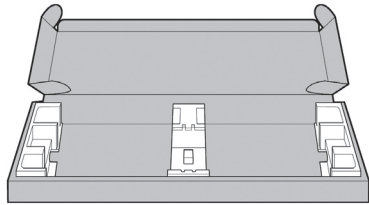
9 Cut and remove the straps around the stand box.



10 Open the stand box.

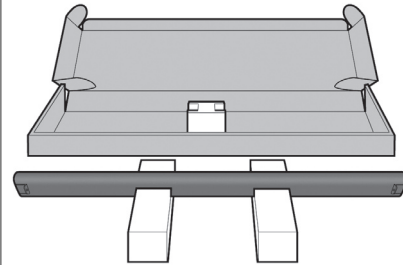


11 Remove the cross-brace and the two pieces of packaging material from each end of the stand box.

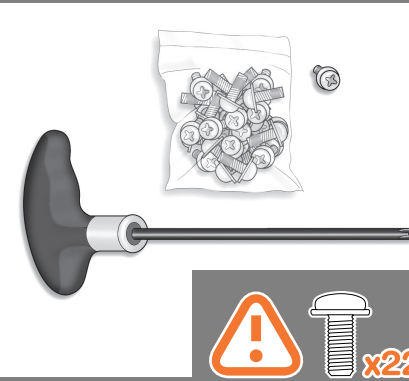


Assemble the stand

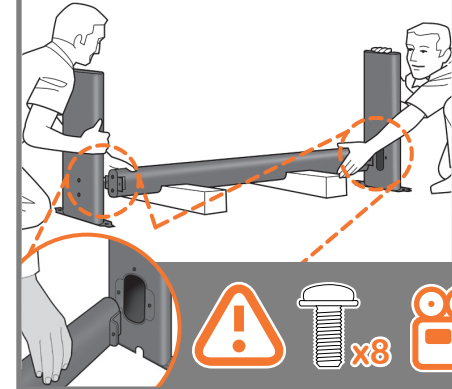
12 Place the two pieces of packaging material on the floor, spaced 40 cm apart, and place the cross-brace on top of them.



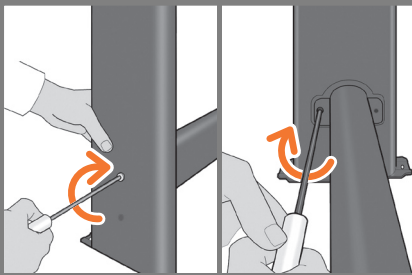
13 A screwdriver and 22 screws are provided in the stand box: 16 screws to assemble the stand, 4 to attach it to the printer, and **2 are spare**. Do not try to remove the washers from the screws. Note: All the screws are for the stand. The basket does not need screws.



14 Attach each leg of the stand to the cross-brace, using two screws **on the outside** of the leg and then two **on the inside**. First fit all four screws loosely, then tighten up the screws **on the outside** of the leg, followed by the screws **on the inside**.

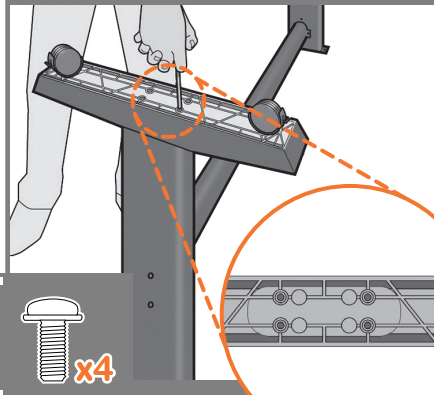


15 **Make sure you have used 4 screws in each leg.**



$4+4=8$ 

16 Attach a foot to each leg, using four screws in each foot. First fit all four screws loosely, then tighten them up.



Attach the stand

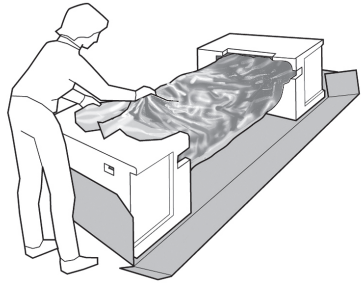
17 Return to the main body of the printer, carefully turn the printer upside down in order to attach the legs.



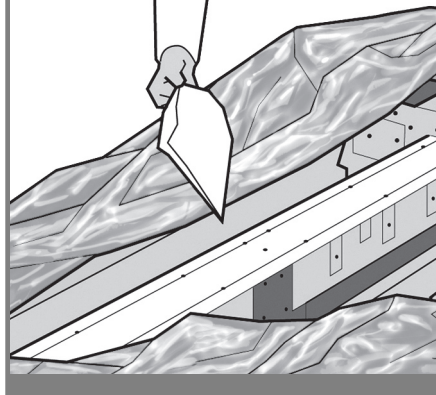
18 Remove the small flaps from each of the foam end pieces. **Do not remove the foam end pieces.**



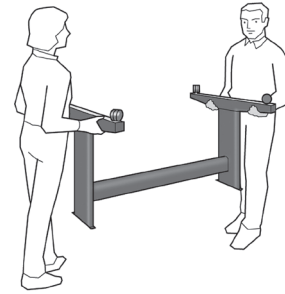
19 Remove the orange tape from the transparent covering that protects the printer.



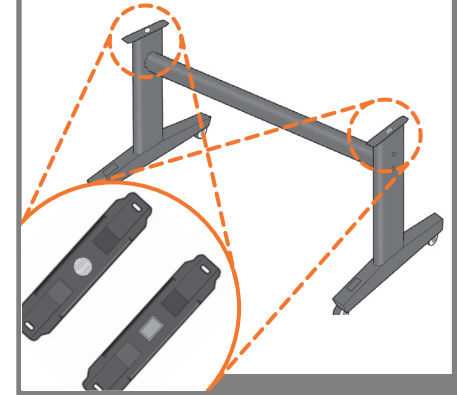
20 Open the transparent covering and remove the desiccant bag from the top of the printer.



21 Lift the stand, keeping it upside down.

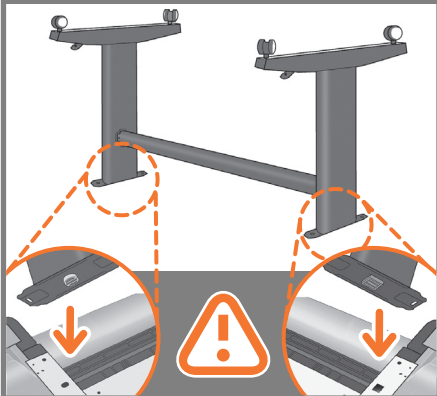


22 There is a round yellow button protruding from the top of one stand leg, and a square green button protruding from the top of the other leg. Each button fits into a hole in the printer.

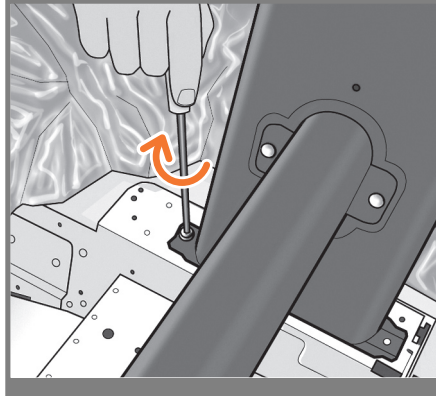


23 Place the stand on the printer slowly and carefully, so that the colored buttons on the legs fit into the corresponding holes in the printer.

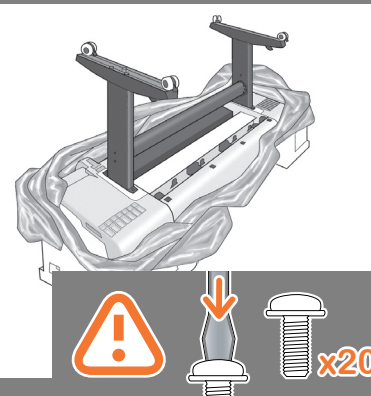
Notice that the printer body is upside down.



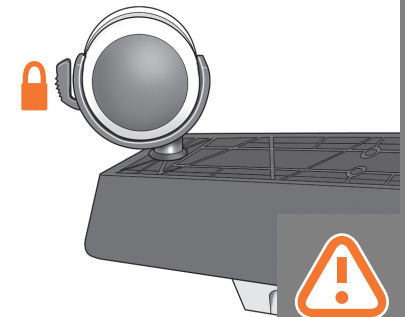
24 When the legs are correctly located on the printer, attach them to the printer using two screws for each leg.



25 Check that you have used a total of twenty screws, and that all have been tightened. You should have two screws left over, which are spare.



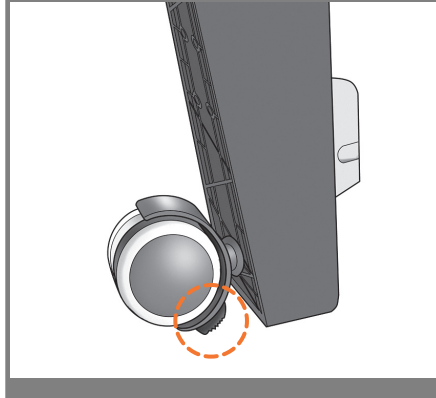
26 Check that the wheels on the stand are locked.



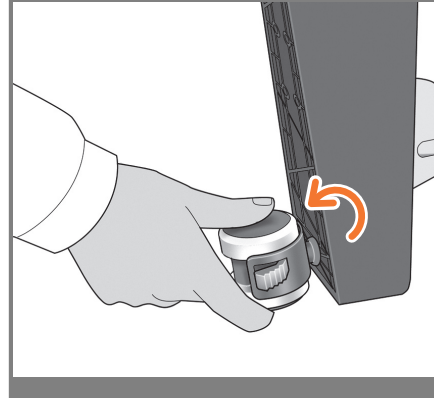
27 Turning the printer over is done in two stages. For the first stage, hold the printer by its feet and rotate the feet until they touch the floor. The printer weighs 60 kg (132 lb) (24" model) or 80 kg (167 lb) (44" model).



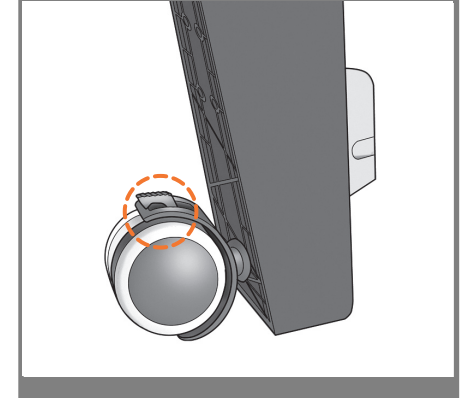
28 If the full weight of the printer rests on the wheel lock, it may break.



29 If necessary, rotate the wheel.



31 The lock on each wheel should be facing inwards (away from the floor).



31 Now hold the printer by the foam end pieces and by the center rear, and continue to rotate it until it stands on its feet, all four wheels in contact with the floor.



32 Remove the foam end pieces.

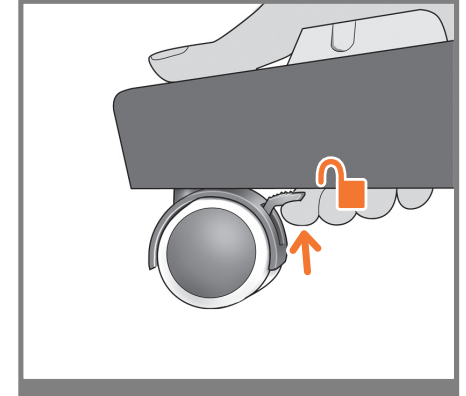


33 Remove the transparent covering from the printer.

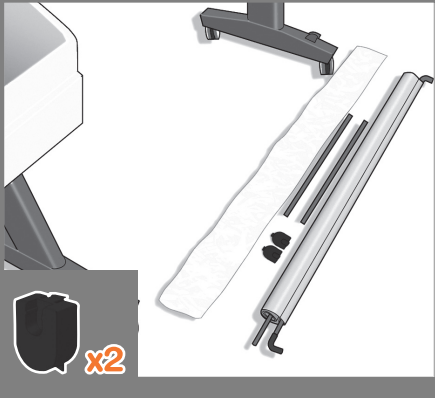
Note: If your printer is 24-in without stand, go to step 41.



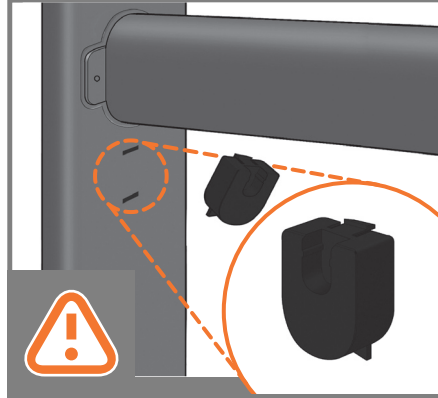
34 Unlock the brake lever on each of the four wheels by lifting the lever.



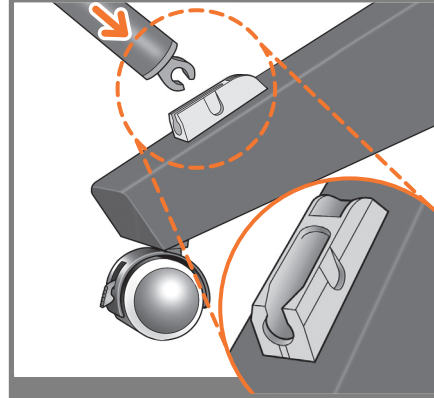
35 Lay out the components of the basket.



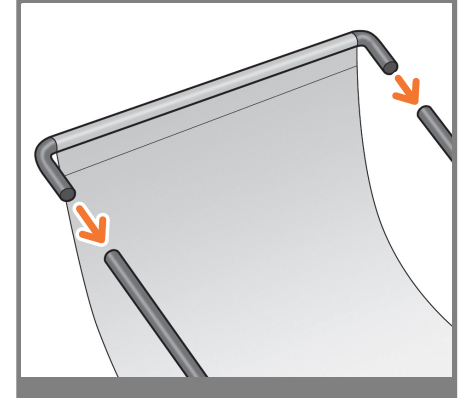
36 Fit the basket supports to the stand legs, one to each leg.



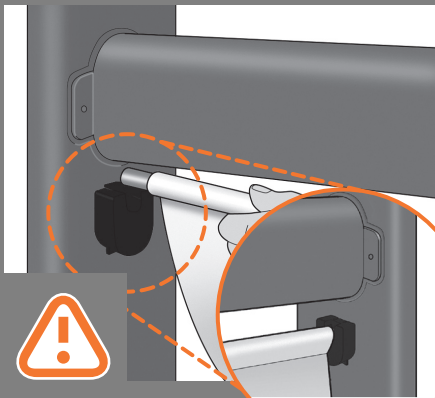
37 Fit the two short tubes to the printer's feet, one on the front of each foot. Each tube should click into place.



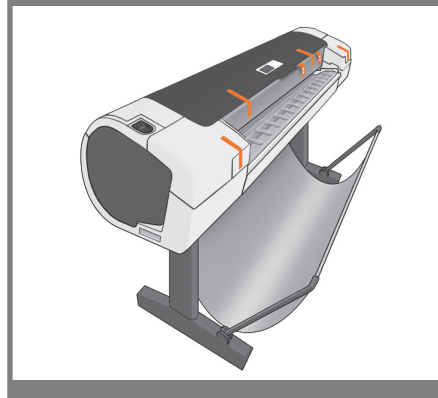
38 Attach the basket's front tube to the two short tubes on each foot.



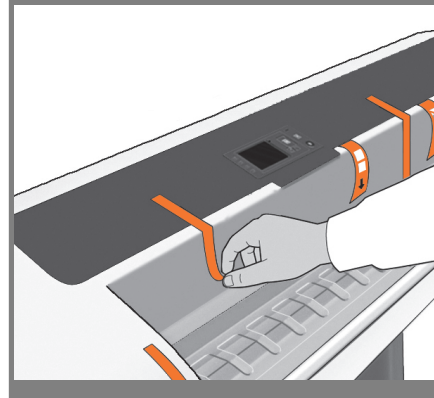
39 Rest the basket's rear tube on the supports that you have just fitted to each leg of the stand.



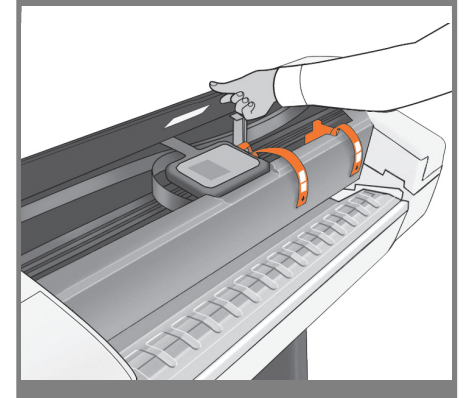
40 The basket is now complete.



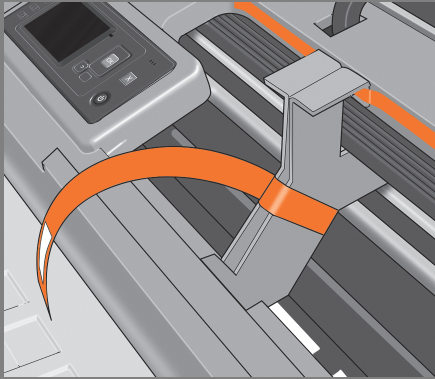
41 Remove the orange tape from the printer window.



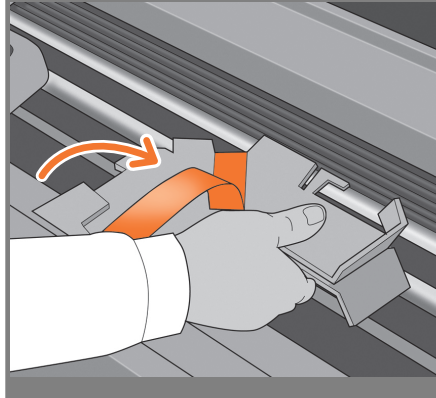
42 Open the window (printer's top cover).



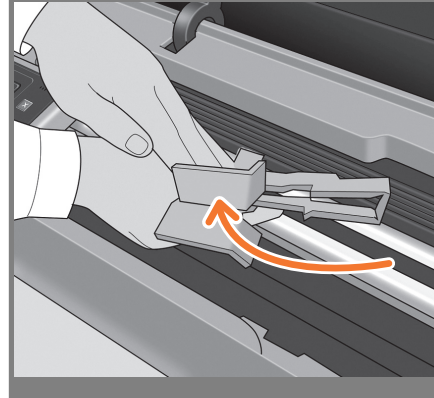
43 Beside the front panel, you will see a cardboard support attached to the printer with tape. Remove the tape.



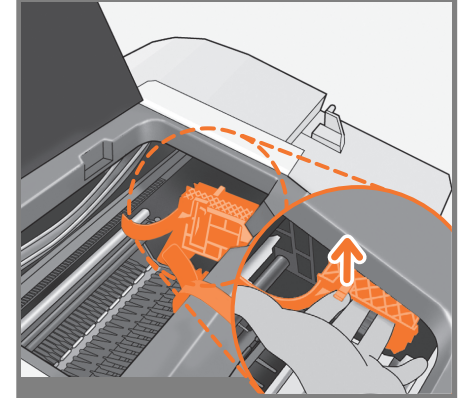
44 Turn the cardboard support 90° to the right.



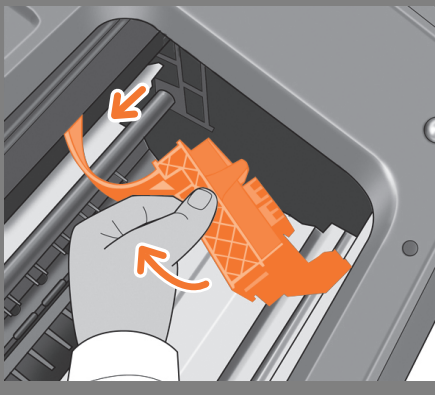
45 Lift the cardboard support up and out of the printer. It will not be needed again; you can discard it.



46 Inside the right-hand side of the printer, you will see an orange carriage stopper. Release the stopper by lifting the lever wrapped with light blue paper, then remove the stopper from the printer.

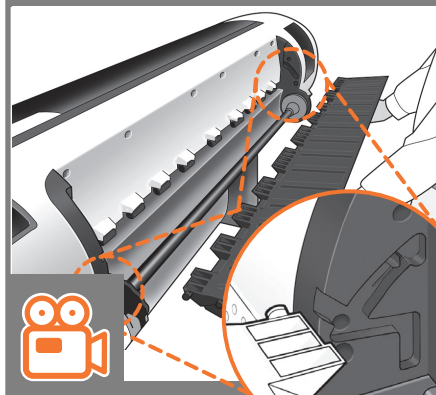


47 Part of the stopper may fall off while you are removing it; in this case, remove both parts. The stopper will not be needed again; you can discard it.

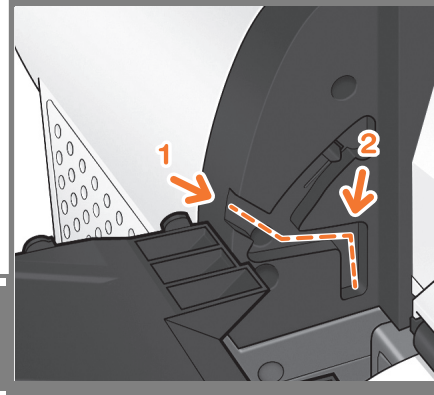


48 Move to the rear of the printer and fit the rear tray to the printer.

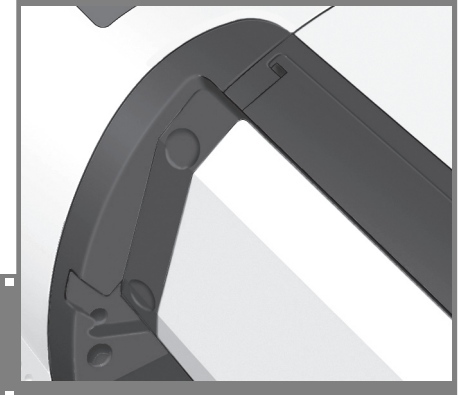
Note: The rear tray may already be assembled (as in step 50). If so, please remove the orange tape from the rear tray and go to step 51.



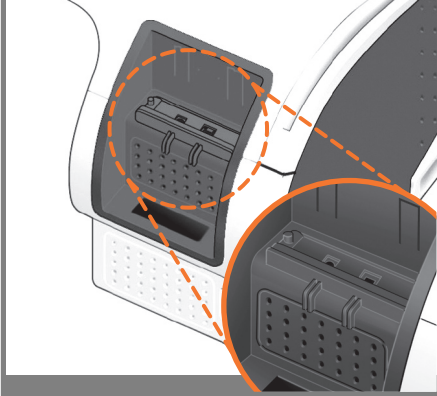
49 Slide it in and then down.



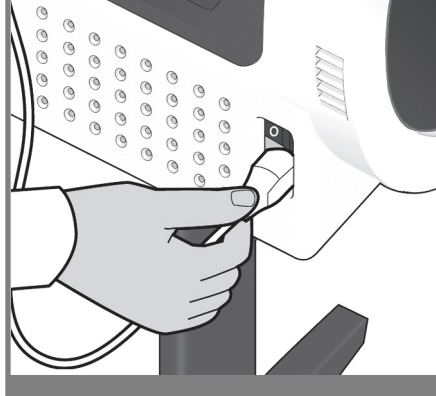
50 Push up the back of the tray into its closed position.



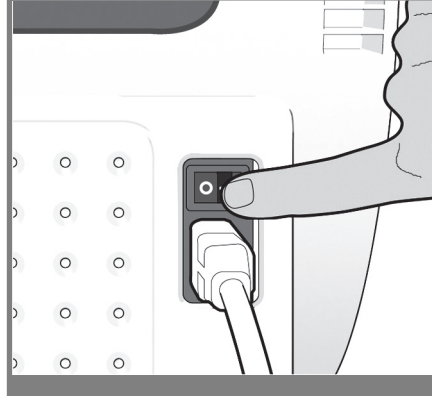
51 Connect the supplied network cable or a certified USB 2.0 cable to the appropriate socket on the rear right of the printer, and secure the cable with the clip provided, to prevent accidental unplugging.



52 Connect the power cable to the printer's power socket.



53 Switch on power to the printer using the switch just above the power socket. Remove the plastic film covering the window and the plastic film covering the front panel (LCD display).



Install the ink cartridges

54 On the front panel, the HP logo appears. Please wait a while. You will then be prompted to select the language of the printer.

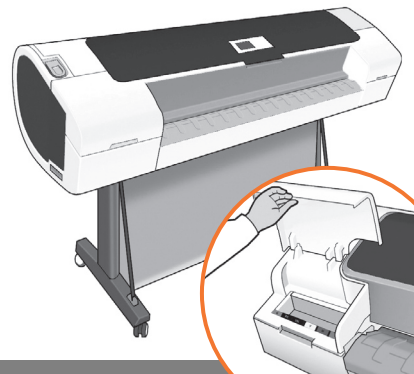


55 The printer checks for the presence of ink cartridges. On finding none, it prompts you to install the ink cartridges.

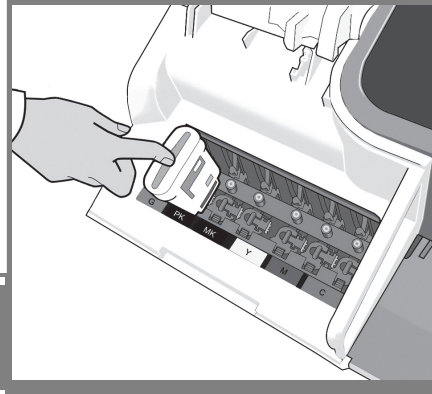
Ink cartridge missing.
Install ink cartridge



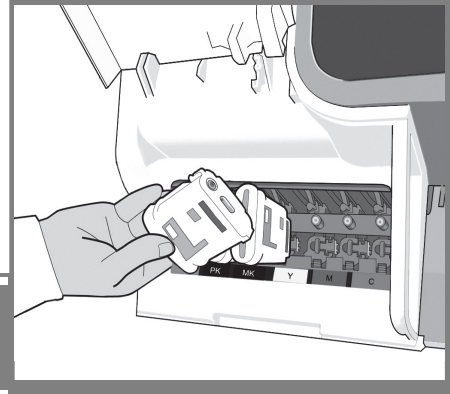
56 Open the cover on the left-hand side of the printer.



57 Insert the ink cartridges one by one. Each cartridge is marked with its own color, and should be inserted only into the slot of the same color. Avoid touching pins, leads or circuits.



58 The cartridges must be inserted the right way around: the ink outlet in the cartridge should meet the ink inlet in the slot. Push the cartridge into the slot until it clicks into place. The printer beeps whenever a cartridge is successfully inserted.



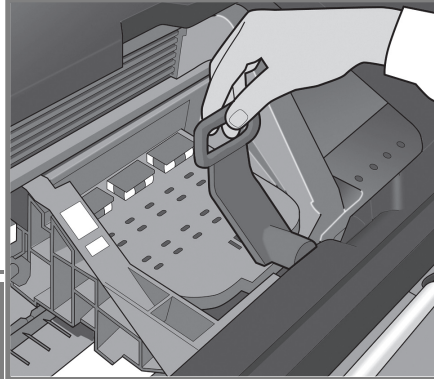
59 When you have inserted all of the ink cartridges correctly, the printer must prepare the ink system for its first use. It will do this immediately if you press the OK key, or after a 60-second pause if you do not press the OK key. When the ink system is ready, the front panel will prompt you to open the window.

Press **OK** to continue

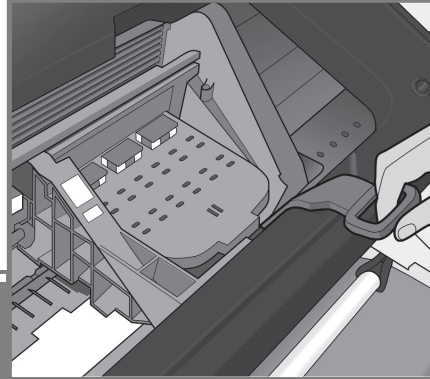


Install the printheads

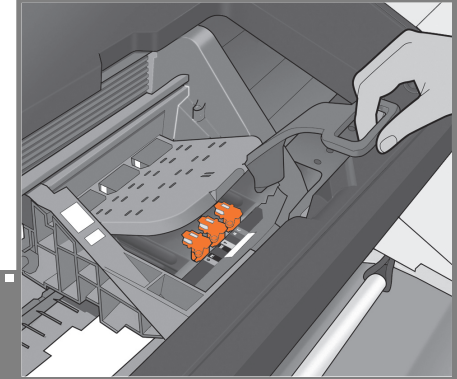
60 Open the window and grasp the blue handle of the printhead cover.



61 Pull the blue handle towards you as far as it will go.



62 Lift the handle up to open the printhead cover. The front panel prompts you for the next step: removing the printheads. Do not press OK until you have removed all the printheads.



63 The setup printheads exist only to prevent the escape of ink during ink cartridge installation. The front panel now prompts you to remove the setup printheads and press the OK key when you have finished.

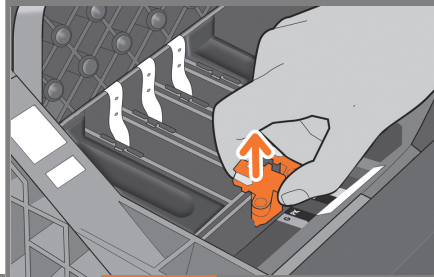
Attention

Remove setup printheads and dispose of them.

Press **OK** to continue



64 Remove and discard all orange setup printheads. You may need to use force to extract each printhead. The setup printheads contain ink, which could leak out. Avoid touching pins, leads or circuits.

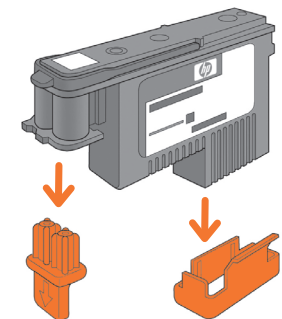


65 Press the OK key on the front panel when you have removed all of the setup printheads. The front panel then prompts you to install the new printheads.

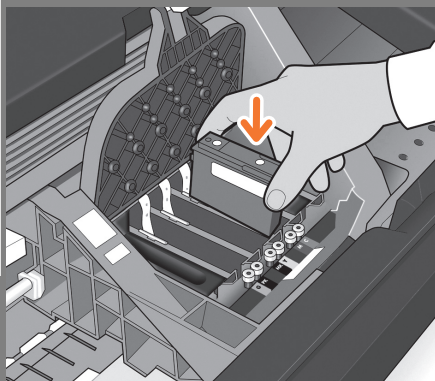
Lift printhead cover.
Install missing printheads



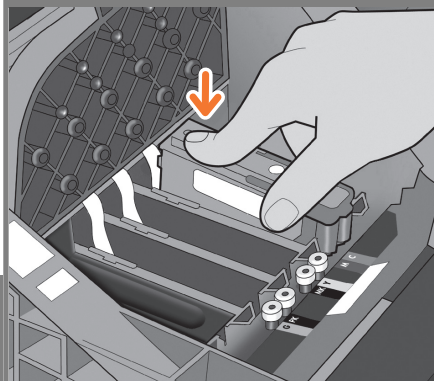
66 Unwrap each printhead and remove all orange parts.



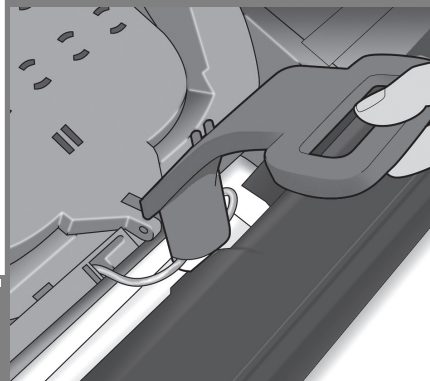
67 Insert the printheads one by one. Each printhead is marked with its own colors, and should be inserted only into the correct slot marked with the same colors. Insert the printheads with the blue handle towards you.



68 Push each printhead into the slot until it clicks into place. The front panel tells you whether the printhead has been inserted correctly.

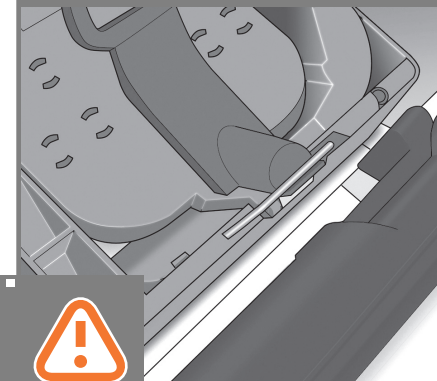


69 Pull the blue handle towards you as far as it will go, picking up the latch in the process.

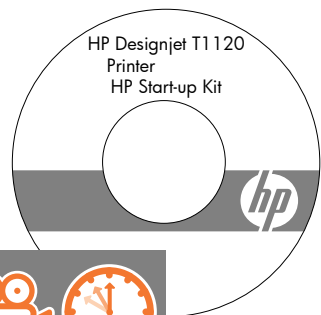


70 Push the handle down on top of the printhead cover. The printer checks and prepares the new printheads, which may take 30 to 40 minutes depending on the condition of the printheads and of the environment.

Close the window.



71 While the printer is preparing the printheads, you could spend the time installing the printer software on your computer. Be sure to follow the software installation instructions. Connecting your printer before installing the software can lead to printer errors.



72 Once the printhead check has finished the printer will be ready to load paper for the printhead alignment.

Load valid paper for printhead alignment

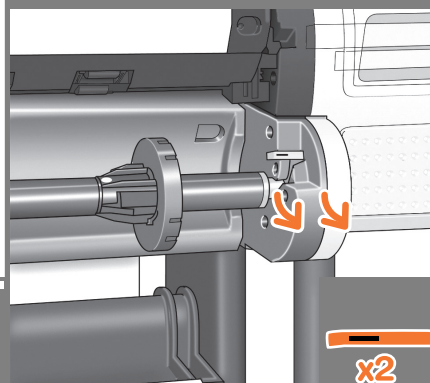
<http://xyz>
<http://xx.yy.zz.www>

Press  to enter menu

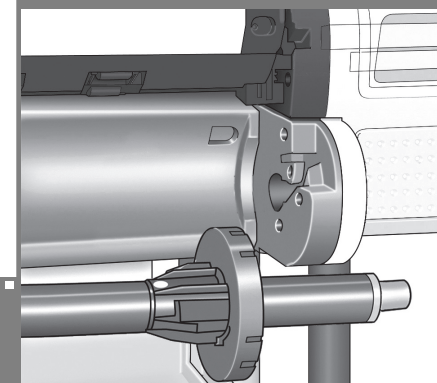


Load a roll of paper

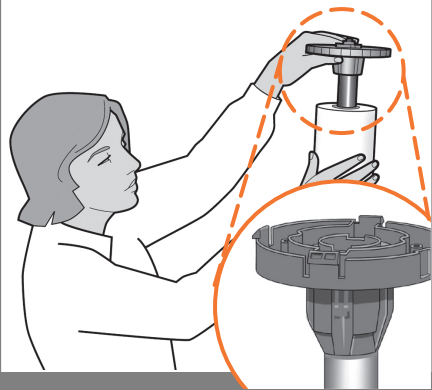
73 When the front panel prompts you to load paper for printhead alignment, go to the rear of the printer, and remove the orange stoppers from each end of the spindle.



74 Remove the spindle by lifting out first the right-hand end, then the left.

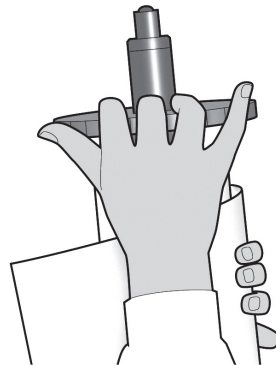


75 If the blue removable stop is on the spindle, remove it. Put the roll onto the spindle, making sure to put it on the right way round: the leading edge of the paper should go into the printer from the top of the roll. Add the removable stop to the spindle to keep the roll in place.

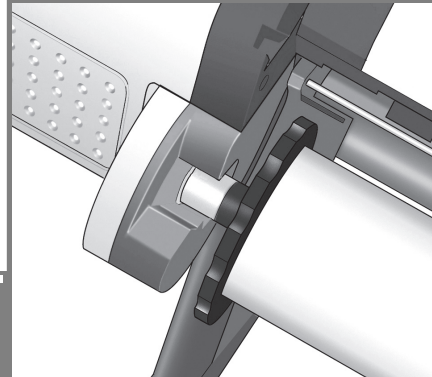


76 Push the removable stop towards the roll as far as it will go.

No gap should be left between stop and paper.

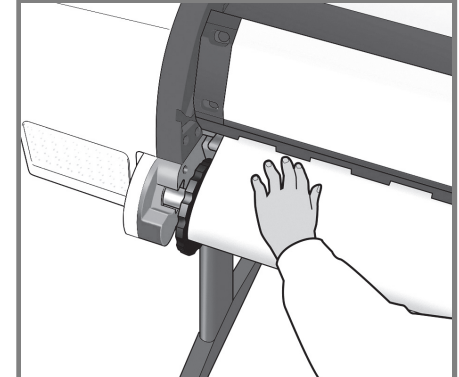


77 Replace the spindle into the printer, left end first, with the fixed stop on the left and the blue removable stop on the right.



78 Feed the leading edge of the paper into the printer until the printer takes hold of it. Then move to the front of the printer.

Align the print-



79 The front panel will ask whether you are loading roll or sheet paper. The printer will proceed to align the printheads. This process involves printing, and therefore needs to use some paper.



80 The front panel will display a series of messages showing the progress of the printhead alignment. There is no need to take any action until the alignment has finished, when you will see the message shown below. Press the OK key.

Printhead alignment
Calibration successfully
completed.

Press **OK** to continue



81 You can now, or at some later time, color-calibrate the paper type that you intend to use in the printer. Color calibration is recommended for accurate color printing. It can be started from the Printer Utility program installed as part of your printer software, or from the front panel's Image Quality Maintenance menu.

Ready

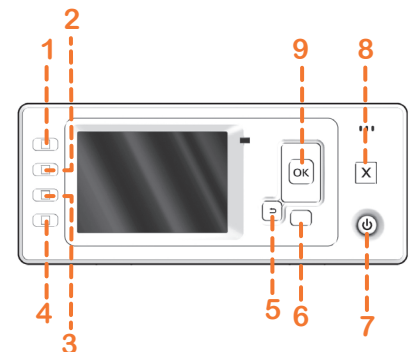
<http://xyz>
<http://xx.yy.zz.www>

Press **Menu** to enter
menu



82

1- View ink levels	6- Menu
2- View loaded paper	7- Power
3- Unload paper	8- cancel
4- Form feed and cut	9- OK
5- Back	



Note for MAC & Windows USB connection:

Do not connect the computer to the printer yet. You must first install the printer driver software on the computer.

Insert the HP Start Up Kit DVD into your computer.

For Windows:

* If the DVD does not start automatically, run autorun.exe program on the root folder on the DVD.

* To install a Network Printer, click on Express Network Install, otherwise click on Custom Install and follow the instructions on your screen.

For Mac:

* If the DVD does not start automatically, open the DVD icon on your desktop.

* Open the Mac OS X HP Designjet Installer icon and follow the instructions on your screen.

NOTE: If the installation failed, reinstall the software from:

HP Designjet T1120:

<http://www.hp.com/go/T1120/drivers>

or

<http://www.hp.com/go/T1120PS/drivers>