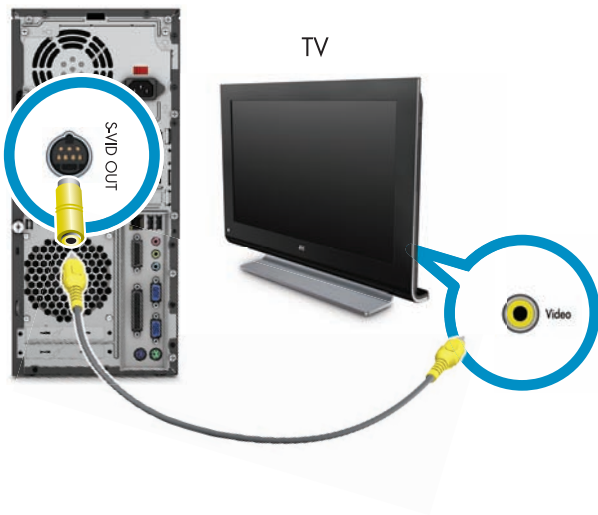


TV Out

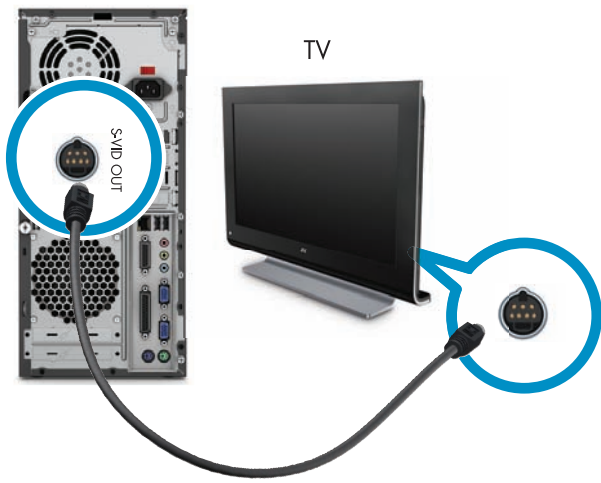
Connect computer to TV (select models only). You can use Composite, S-video, VGA, DVI, or HDMI connections (select models only). Refer to the setup instructions that came with your TV. Cables not included.

Choose one of the following:

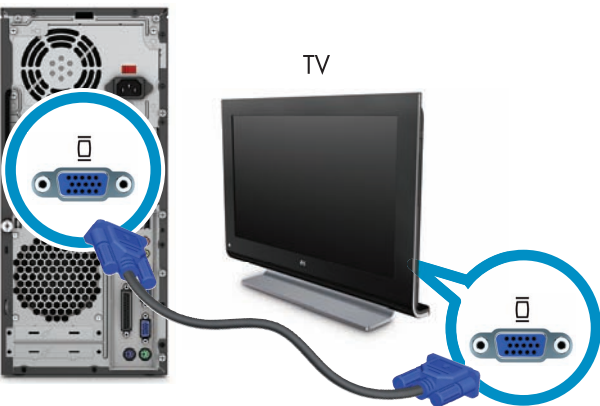
Composite



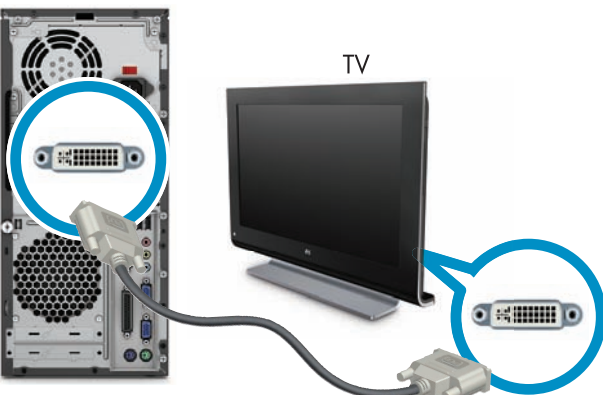
S-video



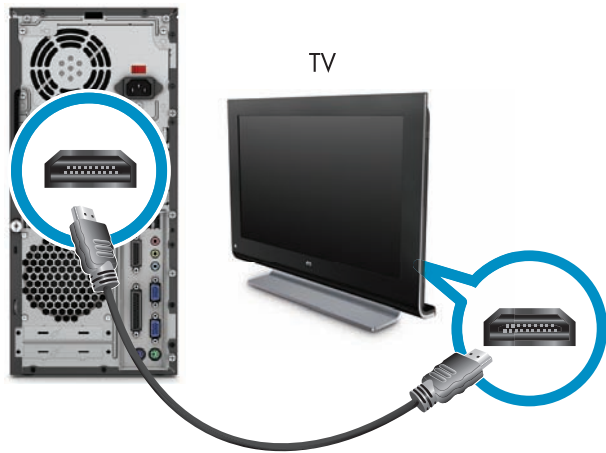
VGA



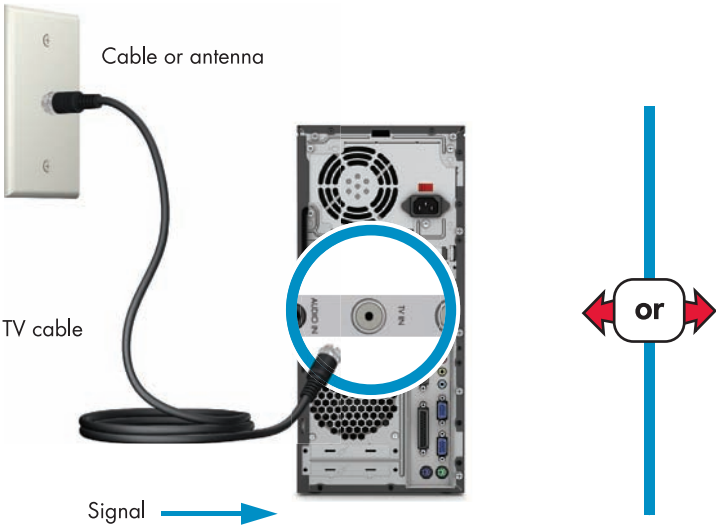
DVI



HDMI



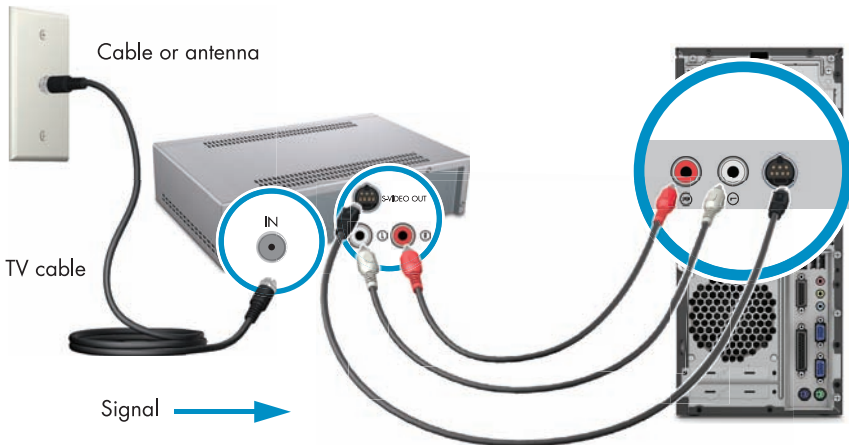
TV Signal In



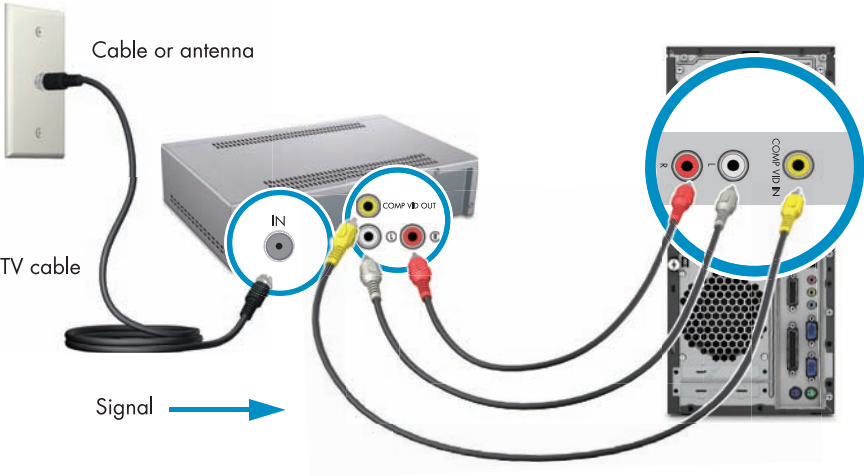
or

If you use a cable or satellite set-top box, pass the signal through the box.
Choose one of the following:

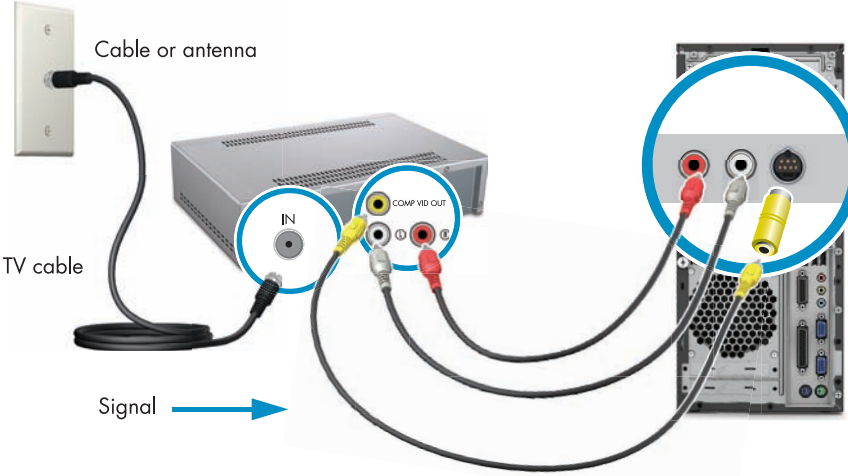
S-video



Composite



Composite-S-video



Remote Sensor

Connect remote control receiver to computer.



If you use a cable or satellite set-top box, pass the signal through the remote sensor control cable.

