

External Media Cards

User Guide

© Copyright 2009 Hewlett-Packard
Development Company, L.P.

SD Logo is a trademark of its proprietor.

The information contained herein is subject to change without notice. The only warranties for HP products and services are set forth in the express warranty statements accompanying such products and services. Nothing herein should be construed as constituting an additional warranty. HP shall not be liable for technical or editorial errors or omissions contained herein.

First Edition: August 2009

Document Part Number: 539207-001

Product notice

This user guide describes features that are common to most models. Some features may not be available on your computer.

Table of contents

Using Digital Media Slot cards (select models only)	
Inserting a digital card	1
Removing a digital card	2
Index	3

Using Digital Media Slot cards (select models only)

Optional digital cards provide secure data storage and convenient data sharing. These cards are often used with digital media–equipped cameras and PDAs as well as with other computers.

The Digital Media Slot supports the following digital card formats:

- Memory Stick (MS)
- Memory Stick Pro (MSP)
- MultiMediaCard (MMC)
- Secure Digital (SD) Memory Card
- xD-Picture Card (XD)

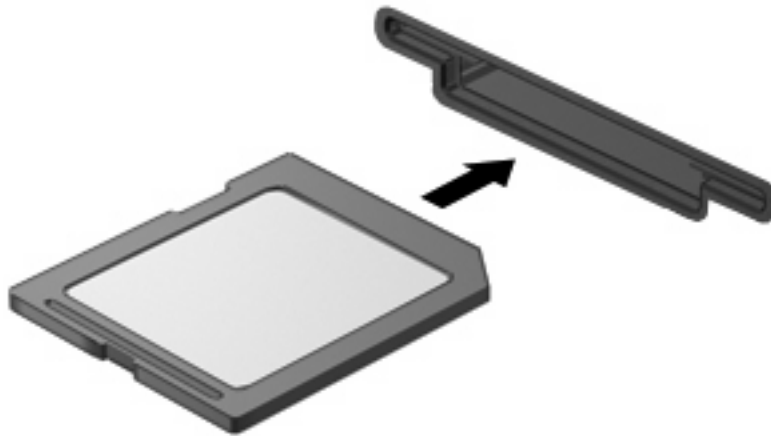
Inserting a digital card

△ **CAUTION:** To avoid damaging the digital card or the computer, do not insert any type of adapter into the Digital Media Slot.

CAUTION: To prevent damage to the digital card connectors, use minimal force to insert a digital card.

1. Hold the digital card label-side up, with the connectors facing the computer.

2. Insert the card into the Digital Media Slot, and then push in on the card until it is firmly seated.



You will hear a sound when the device has been detected, and a menu of options may be displayed.

Removing a digital card

- △ **CAUTION:** To prevent loss of data or an unresponsive system, use the following procedure to safely remove the digital card.

Save your information and close all programs associated with the digital card.

- 📄 **NOTE:** To stop a data transfer, click **Cancel** in the operating system Copying window.

To remove a digital card:

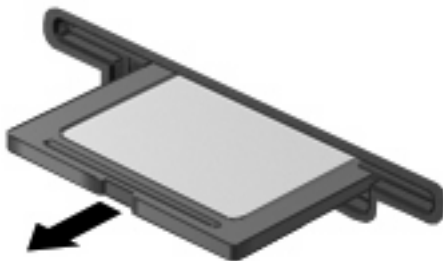
1. Click the **Safely Remove Hardware and Eject Media** icon in the notification area, at the far right of the taskbar.

- 📄 **NOTE:** To display the Safely Remove Hardware and Eject Media icon, click the **Show hidden icons** icon (the arrow at the left side of the notification area).

2. Click the name of the digital card in the list.

- 📄 **NOTE:** You are prompted that it is safe to remove the hardware device.

3. Remove the digital card from the slot.



Index

D

- digital card
 - defined 1
 - inserting 1
 - removing 2
 - stopping 2

