

HP Photosmart B109 series



Contents

1	HP Photosmart B109 series Help	3
2	Get to know the HP Photosmart	
	Printer parts	5
	Control panel features	6
3	How do I?	7
5	Print	
	Print documents	15
	Print photos	16
	Print envelopes	22
	Print on specialty media	23
	Print a Web page	24
6	Scan	
	Scan to a computer	29
	Scan to a memory card	30
7	Copy	
	Copy text or mixed documents	34
8	Reprint photos	39
9	Save photos	41
10	Maintain the HP Photosmart	
	Check the estimated ink levels	43
	Replace the cartridges	44
	Order ink supplies	46
	Cartridge warranty information	46
	Print and evaluate a print quality report	47
11	Solve a problem	
	HP support	51
	Setup troubleshooting	53
	Print troubleshooting	58
	Print quality troubleshooting	63
	Memory card troubleshooting	63
	Scan troubleshooting	65
	Copy troubleshooting	67
	Errors	67
13	Technical information	
	Notice	99
	Cartridge chip information	99
	Specifications	100

Environmental product stewardship program.....	101
Regulatory notices.....	106
Index.....	109

1 HP Photosmart B109 series Help

For information about the HP Photosmart, see:

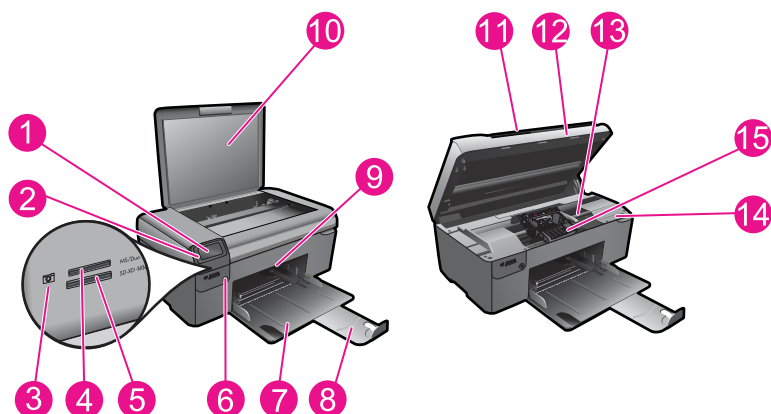
- [“Get to know the HP Photosmart”](#) on page 5
- [“How do I?”](#) on page 7
- [“Print”](#) on page 15
- [“Scan”](#) on page 29
- [“Copy”](#) on page 33
- [“Reprint photos”](#) on page 39
- [“Save photos”](#) on page 41
- [“Maintain the HP Photosmart”](#) on page 43
- [“Technical information”](#) on page 99

2 Get to know the HP Photosmart

- [Printer parts](#)
- [Control panel features](#)

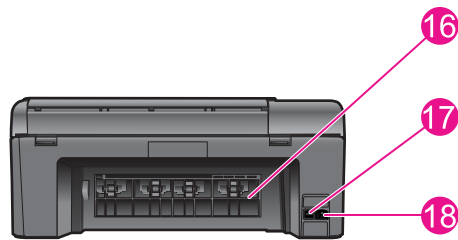
Printer parts

- Front and top views of the HP Photosmart



1	Color graphics display (also referred to as the display)
2	Control panel
3	Photo light
4	Memory card slot for Memory Stick cards
5	Memory card slot for Secure Digital and xD cards
6	On button
7	Paper tray
8	Paper tray extender (also referred to as the tray extender)
9	Glass
10	Lid-backing
11	Lid
12	Cartridge door
13	Cartridge access area
14	Model number location
15	Printhead assembly

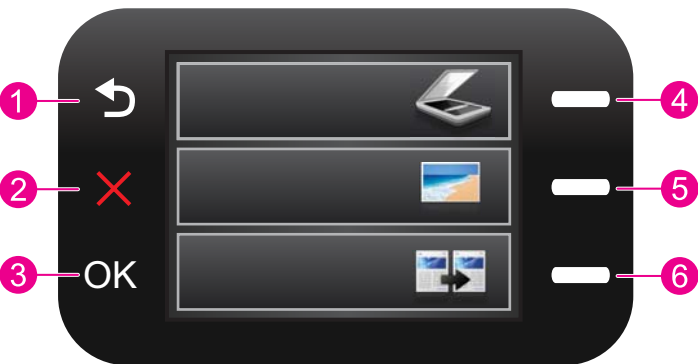
- Rear view of the HP Photosmart



16	Rear door
17	Rear USB port
18	Power connection (Use only with the power adapter supplied by HP.)

Control panel features

Figure 2-1 Control panel features



1	Back: Returns to the previous screen.
2	Cancel: Stops the current operation, restores default settings, and clears the current photo selection.
3	OK: Selects a menu setting, value, or photo.
4	Scan: From the Home screen, opens the Scan Menu . When viewing screens other than the Home screen, selects options related to the current display.
5	Photo: From the Home screen, opens the Photo Menu . When viewing screens other than the Home screen, selects options related to the current display.
6	Copy: From the Home screen, opens the Copy Menu . When viewing screens other than the Home screen, selects options related to the current display.

3 How do I?

This section contains links to commonly performed tasks, such as printing photos, scanning, and making copies.

- [“Print photos from a memory card”](#) on page 18
- [“Print on specialty media”](#) on page 23
- [“Save photos”](#) on page 41
- [“Load media”](#) on page 12
- [“Replace the cartridges”](#) on page 44
- [“Scan to a computer”](#) on page 29
- [“Scan to a memory card”](#) on page 30

4 Paper basics

You can load many different types and sizes of paper in the HP Photosmart, including letter or A4 paper, photo paper, transparencies, and envelopes.

This section contains the following topics:

- [“Recommended papers for photo printing” on page 9](#)
- [“Recommended papers for printing” on page 10](#)
- [“Load media” on page 12](#)
- [“Information on paper” on page 14](#)

Recommended papers for photo printing

If you want the best print quality, HP recommends using HP papers that are specifically designed for the type of project you are printing.

Depending on your country/region, some of these papers might not be available.

HP Advanced Photo Paper

This thick photo paper features an instant-dry finish for easy handling without smudging. It resists water, smears, fingerprints, and humidity. Your prints have a look and feel comparable to a store-processed photo. It is available in several sizes, including A4, 8.5 x 11 inch, 10 x 15 cm (4 x 6 inch) (with or without tabs), 13 x 18 cm (5 x 7 inch), and two finishes - glossy or soft gloss (satin matte). It is acid-free for longer lasting documents.

HP Everyday Photo Paper

Print colorful, everyday snapshots at a low cost, using paper designed for casual photo printing. This affordable, photo paper dries quickly for easy handling. Get sharp, crisp images when you use this paper with any inkjet printer. It is available in semi-gloss finish in several sizes, including A4, 8.5 x 11 inch, and 10 x 15 cm (4 x 6 inch) (with or without tabs). For longer-lasting photos, it is acid-free.

HP Photo Value Pack

HP Photo Value Packs conveniently package original HP cartridges and HP Advanced Photo Paper to save you time and take the guesswork out of printing affordable professional photos with your HP Photosmart. Original HP inks and HP Advanced Photo Paper have been designed to work together so your photos are long lasting and vivid, print after print. Great for printing out an entire vacation's worth of photos or multiple prints to share.

To order HP papers and other supplies, go to www.hp.com/buy/supplies. If prompted, choose your country/region, follow the prompts to select your product, and then click one of the shopping links on the page.

 **NOTE:** At this time, some portions of the HP Web site are available in English only.

Recommended papers for printing

If you want the best print quality, HP recommends using HP papers that are specifically designed for the type of project you are printing.

Depending on your country/region, some of these papers might not be available.

HP Advanced Photo Paper

This thick photo paper features an instant-dry finish for easy handling without smudging. It resists water, smears, fingerprints, and humidity. Your prints have a look and feel comparable to a store-processed photo. It is available in several sizes, including A4, 8.5 x 11 inch, 10 x 15 cm (4 x 6 inch) (with or without tabs), 13 x 18 cm (5 x 7 inch), and two finishes - glossy or soft gloss (satin matte). It is acid-free for longer lasting documents.

HP Everyday Photo Paper

Print colorful, everyday snapshots at a low cost, using paper designed for casual photo printing. This affordable, photo paper dries quickly for easy handling. Get sharp, crisp images when you use this paper with any inkjet printer. It is available in semi-gloss finish in several sizes, including A4, 8.5 x 11 inch, and 10 x 15 cm (4 x 6 inch) (with or without tabs). For longer-lasting photos, it is acid-free.

HP Brochure Paper or HP Superior Inkjet Paper

These papers are glossy-coated or matte-coated on both sides for two-sided use. They are the perfect choice for near-photographic reproductions and business graphics for report covers, special presentations, brochures, mailers, and calendars.

HP Premium Presentation Paper or HP Professional Paper

These papers are heavy two-sided matte papers perfect for presentation, proposals, reports, and newsletters. They are heavyweight for an impressive look and feel.

HP Bright White Inkjet Paper

HP Bright White Inkjet Paper delivers high-contrast colors and sharp text. It is opaque enough for two-sided color usage with no show-through, which makes it ideal for newsletters, reports, and flyers. It features ColorLok Technology for less smearing, bolder blacks, and vivid colors.

HP Printing Paper

HP Printing Paper is a high-quality multifunction paper. It produces documents that look and feel more substantial than documents printed on standard multipurpose or copy paper. It features ColorLok Technology for less smearing, bolder blacks, and vivid colors. It is acid-free for longer lasting documents.

HP Office Paper

HP Office Paper is a high-quality multifunction paper. It is suitable for copies, drafts, memos, and other everyday documents. It features ColorLok Technology for less smearing, bolder blacks, and vivid colors. It is acid-free for longer lasting documents.

HP Iron-On Transfers

HP Iron-on Transfers (for color fabrics or for light or white fabrics) are the ideal solution for creating custom T-shirts from your digital photos.

HP Premium Inkjet Transparency Film

HP Premium Inkjet Transparency Film makes your color presentations vivid and even more impressive. This film is easy to use and handle, and dries quickly without smudging.

HP Photo Value Pack


HP Photo Value Packs conveniently package original HP cartridges and HP Advanced Photo Paper to save you time and take the guesswork out of printing affordable professional photos with your HP Photosmart. Original HP inks and HP Advanced Photo Paper have been designed to work together so your photos are long lasting and vivid, print after print. Great for printing out an entire vacation's worth of photos or multiple prints to share.

ColorLok

HP recommends plain papers with the ColorLok logo for printing and copying of everyday documents. All papers with the ColorLok logo are independently tested to meet high standards of reliability and print quality, and produce documents with crisp, vivid color, bolder blacks, and dry faster than ordinary plain papers. Look for papers with the ColorLok logo in a variety of weights and sizes from major paper manufacturers.



To order HP papers and other supplies, go to www.hp.com/buy/supplies. If prompted, choose your country/region, follow the prompts to select your product, and then click one of the shopping links on the page.

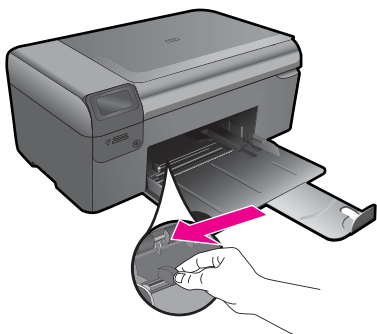
 **NOTE:** At this time, some portions of the HP Web site are available in English only.

Load media

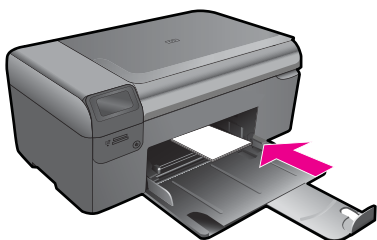
1. Do one of the following:

Load small-size paper

- a. Lower paper tray.
 - ☐ Slide paper-width guide outwards.



- b. Load paper.
 - ☐ Insert stack of photo paper into paper tray with short edge forward and print side down.

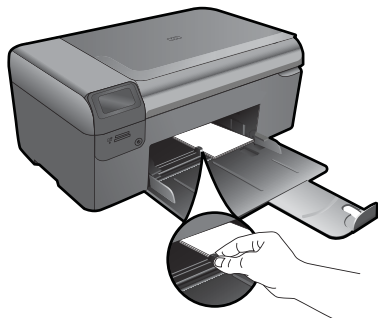


- ❑ Slide stack of paper forward until it stops.



NOTE: If the photo paper you are using has perforated tabs, load photo paper so that tabs are closest to you.

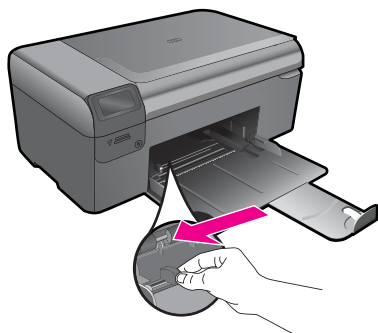
- ❑ Slide paper-width guide inward until it stops at edge of paper.



Load full-size paper

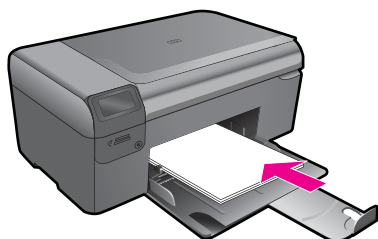
a. Lower paper tray.

- ❑ Slide paper-width guide outwards.

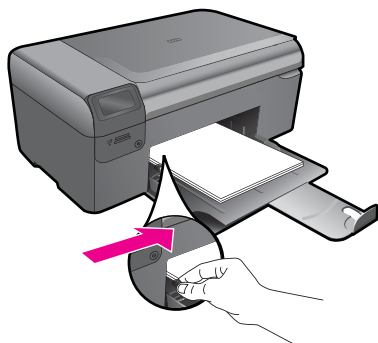


b. Load paper.

- ❑ Insert stack of paper into paper tray with short edge forward and print side down.



- ☐ Slide stack of paper forward until it stops.
- ☐ Slide paper-width guide inward until it stops at edge of paper.



2. View the animation for this topic.

Related topics

["Information on paper" on page 14](#)

Information on paper

The HP Photosmart is designed to work well with most paper types. Test a variety of paper types before buying a large quantity. Find a paper type that works well and is easy to purchase. HP papers are designed for the best quality results. In addition, follow these tips:

- Do not use paper that is too thin, that has a slick texture, or that stretches easily. It can feed incorrectly through the paper path, causing paper jams.
- Store photo media in its original packaging inside a resealable plastic bag on a flat surface in a cool, dry place. When you are ready to print, remove only the paper you plan to use immediately. When you have finished printing, return any unused photo paper to the plastic bag.
- Do not leave unused photo paper in the paper tray. The paper might start to curl, which might reduce the quality of your printouts. Curled paper can also cause paper jams.
- Always hold photo paper by the edges. Fingerprints on photo paper can reduce print quality.
- Do not use paper that is heavily textured. It can cause graphics or text to print improperly.
- Do not combine different paper types and paper sizes in the paper tray; the entire stack of paper in the paper tray must be the same size and type.
- For best results, do not allow printed photos to stack up in the paper tray.
- Store printed photos under glass or in a storage book to prevent bleeding over time from high humidity.

5 Print



[“Print documents”](#) on page 15



[“Print photos”](#) on page 16



[“Print envelopes”](#) on page 22



[“Print on specialty media”](#) on page 23



[“Print a Web page”](#) on page 24

Related topics

- [“Load media”](#) on page 12
- [“Recommended papers for photo printing”](#) on page 9
- [“Recommended papers for printing”](#) on page 10

Print documents

Most print settings are automatically handled by the software application. You need to change the settings manually only when you change print quality, print on specific types of paper or transparency film, or use special features.


To print from a software application

1. Make sure you have paper loaded in the paper tray.
2. On the **File** menu in your software application, click **Print**.
3. Make sure the product is the selected printer.
4. If you need to change settings, click the button that opens the **Properties** dialog box. Depending on your software application, this button might be called **Properties**, **Options**, **Printer Setup**, **Printer**, or **Preferences**.



NOTE: When printing a photo, you must select options for the specific photo paper and photo enhancement.

5. Select the appropriate options for your print job by using the features available in the **Advanced**, **Printing Shortcuts**, **Features**, and **Color** tabs.

 **TIP:** You can easily select the appropriate options for your print job by choosing one of the predefined print tasks on the **Printing Shortcuts** tab. Click a type of print task in the **Printing Shortcuts** list. The default settings for that type of print task are set and summarized on the **Printing Shortcuts** tab. If necessary, you can adjust the settings here and save your custom settings as a new printing shortcut. To save a custom printing shortcut, select the shortcut and click **Save As**. To delete a shortcut, select the shortcut and click **Delete**.

6. Click **OK** to close the **Properties** dialog box.
7. Click **Print** or **OK** to begin printing.

Related topics

- [“Recommended papers for printing” on page 10](#)
- [“Load media” on page 12](#)
- [“View the print resolution” on page 25](#)
- [“Printing shortcuts” on page 25](#)
- [“Set the default print settings” on page 26](#)
- [“Stop the current job” on page 97](#)

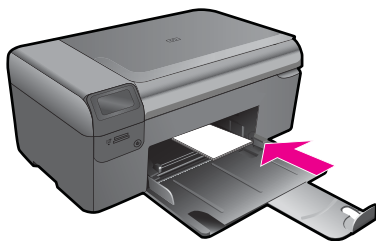
Print photos

- [“Print photos saved on your computer” on page 16](#)
- [“Print photos from a memory card” on page 18](#)

Print photos saved on your computer

To print a photo on photo paper

1. Remove all paper from the paper tray.
2. Place the photo paper print side down on the right side of the paper tray.



3. Slide the paper-width guide inward until it stops at the edge of the paper.
4. On the **File** menu in your software application, click **Print**.
5. Make sure the product is the selected printer.

6. Click the button that opens the **Properties** dialog box.
Depending on your software application, this button might be called **Properties**, **Options**, **Printer Setup**, **Printer**, or **Preferences**.
7. Click the **Features** tab.
8. In the **Basic Options** area, from the **Paper Type** drop-down list, select **More**. Then, select the appropriate photo paper type.
9. In the **Resizing Options** area, from the **Size** drop-down list, select **More**. Then, select the appropriate paper size.
If the paper size and paper type are not compatible, the printer software displays an alert and allows you to select a different type or size.
10. (Optional) Select the **Borderless printing** check box if it is not already checked.
If the borderless paper size and paper type are not compatible, the product software displays an alert and allows you to select a different type or size.
11. In the **Basic Options** area, select a high print quality, such as **Best**, from the **Print Quality** drop-down list.



NOTE: To achieve the highest dpi resolution, you can use the **Maximum dpi** setting with supported types of photo paper. If **Maximum dpi** is not listed in the Print quality drop-down list, you can enable it from the **Advanced** tab. For more information, see [“Print using Maximum dpi” on page 24](#).

12. In the **HP Real Life Technologies** area, click the **Photo fix** drop-down list and select from the following options:
 - **Off:** applies no **HP Real Life Technologies** to the image.
 - **Basic:** enhances low-resolution images; moderately adjusts image sharpness.
13. Click **OK** to return to the **Properties** dialog box.
14. Click **OK**, and then click **Print** or **OK** in the **Print** dialog box.



NOTE: Do not leave unused photo paper in the paper tray. The paper might start to curl, which could reduce the quality of your printout. For best results, do not allow printed photos to stack up in the paper tray.

Related topics

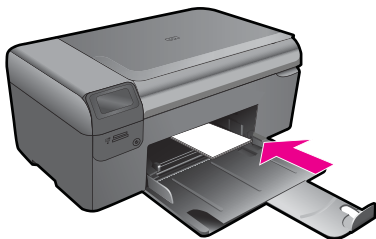
- [“Recommended papers for photo printing” on page 9](#)
- [“Load media” on page 12](#)
- [“Print using Maximum dpi” on page 24](#)
- [“View the print resolution” on page 25](#)
- [“Printing shortcuts” on page 25](#)
- [“Set the default print settings” on page 26](#)
- [“Stop the current job” on page 97](#)

Print photos from a memory card

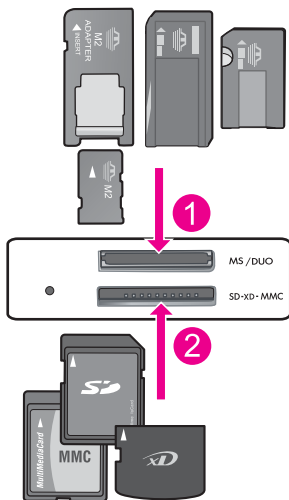
1. Do one of the following:

Print photo on small-size paper

- a. Load paper.
- ❑ Load up to 10 x 15 cm (4 x 6 inch) photo paper in paper tray.



- b. Select project type.
- ❑ Press button next to **Photo** on Home screen.
 - ❑ Press button next to **Memory Card Print**.
- c. Insert memory device.

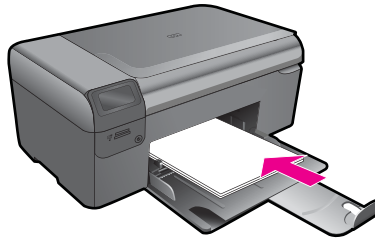


- | | |
|---|--|
| 1 | Memory Stick, Memory Stick Pro, Memory Stick Select, Memory Stick Magic Gate, Memory Stick Duo or Pro Duo (adapter optional), Memory Stick Pro-HG Duo (adapter optional), or Memory Stick Micro (adapter required) |
| 2 | MultiMediaCard (MMC), MMC Plus, Secure MultiMedia Card, MMC Mobile (RS-MMC; adapter required), Secure Digital (SD), Secure Digital Mini, Secure Digital High Capacity (SDHC), TransFlash MicroSD Card (adapter required), or xD-Picture card |

- d. Select photo.
 - ☐ Press button next to **Select**.
 - ☐ Press **OK**.
 - ☐ Press button next to **Prints** to increase number of copies.
- e. Print photo.
 - ☐ Press **OK**.

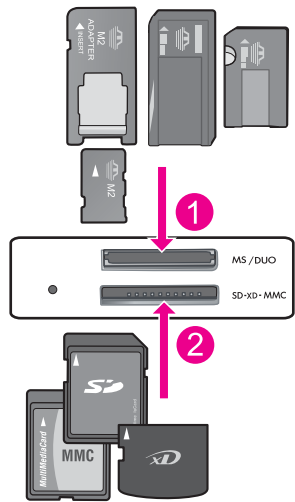
Print photo on full-size paper

- a. Load paper.
 - ☐ Load full-size photo paper in paper tray.



- b. Select project type.
 - ☐ Press button next to **Photo** on Home screen.
 - ☐ Press button next to **Memory Card Print**.

c. Insert memory device.



- | | |
|---|--|
| 1 | Memory Stick, Memory Stick Pro, Memory Stick Select, Memory Stick Magic Gate, Memory Stick Duo or Pro Duo (adapter optional), Memory Stick Pro-HG Duo (adapter optional), or Memory Stick Micro (adapter required) |
| 2 | MultiMediaCard (MMC), MMC Plus, Secure MultiMedia Card, MMC Mobile (RS-MMC; adapter required), Secure Digital (SD), Secure Digital Mini, Secure Digital High Capacity (SDHC), TransFlash MicroSD Card (adapter required), or xD-Picture card |

d. Select photo.

- ☐ Press button next to **Select**.
- ☐ Press **OK**.
- ☐ Press button next to **4 x 6 Photo** until size changes to **8.5 x 11 Photo**.
- ☐ Press button next to **Prints** to increase number of copies.

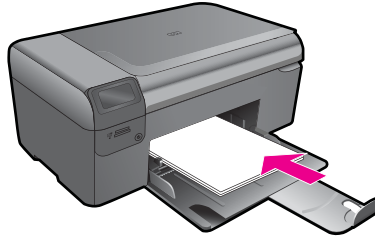
e. Print photo.

- ☐ Press **OK**.

Print passport photos

a. Load paper.

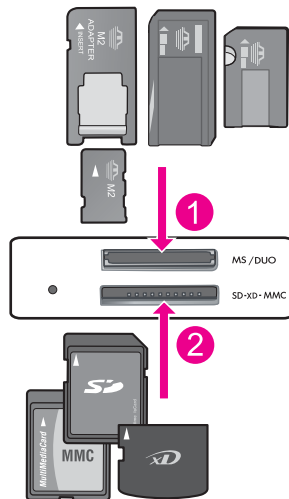
- ☐ Load full-size photo paper in paper tray.



b. Select project type.

- ☐ Press button next to **Photo** on Home screen.
- ☐ Press button next to **Passport Photo Print**.

c. Insert memory device.



- 1 Memory Stick, Memory Stick Pro, Memory Stick Select, Memory Stick Magic Gate, Memory Stick Duo or Pro Duo (adapter optional), Memory Stick Pro-HG Duo (adapter optional), or Memory Stick Micro (adapter required)
- 2 MultiMediaCard (MMC), MMC Plus, Secure MultiMedia Card, MMC Mobile (RS-MMC; adapter required), Secure Digital (SD), Secure Digital Mini, Secure Digital High Capacity (SDHC), TransFlash MicroSD Card (adapter required), or xD-Picture card

- d. Select photo.
 - ☐ Press button next to **Select**.
 - ☐ Press **OK**.
 - ☐ Press button next to **Prints** to increase number of copies.
- e. Print photo.
 - ☐ Press **OK**.

2. View the animation for this topic

Related topics

- [“Recommended papers for photo printing”](#) on page 9
- [“Stop the current job”](#) on page 97

Print envelopes

With the HP Photosmart, you can print on a single envelope, a group of envelopes, or label sheets designed for inkjet printers.

To print a group of addresses on labels or envelopes

1. Print a test page on plain paper first.
 2. Place the test page on top of the label sheet or envelope, and hold both up to the light. Check the spacing for each block of text. Make adjustments as needed.
 3. Load the labels or envelopes into the paper tray.
-
- △ **CAUTION:** Do not use envelopes with clasps or windows. They can get stuck in the rollers and cause paper jams.
-
4. Slide the paper-width guide inward against the stack of labels or envelopes until the guide stops.
 5. If you are printing on envelopes, do the following:
 - a. Display the print settings, and click the **Features** tab.
 - b. In the **Resizing Options** area, click the appropriate envelope size in the **Size** list.
 6. Click **OK**, and then click **Print** or **OK** in the **Print** dialog box.

Related topics

- [“Paper basics”](#) on page 9
- [“View the print resolution”](#) on page 25
- [“Printing shortcuts”](#) on page 25
- [“Set the default print settings”](#) on page 26
- [“Stop the current job”](#) on page 97

Print on specialty media

To reverse an image for iron-on transfers

1. On the **File** menu in your software application, click **Print**.
2. Make sure the product is the selected printer.
3. Click the button that opens the **Properties** dialog box.
Depending on your software application, this button might be called **Properties**, **Options**, **Printer Setup**, **Printer**, or **Preferences**.
4. Click the **Features** tab.
5. In the **Paper Type** drop-down list, click **More**, and then select **HP Iron-on Transfer** from the list.
6. If the selected size is not what you want, click an appropriate size in the **Size** list.
7. Click the **Advanced** tab.
8. In the **Features** area, select the **Mirror Image** check box.
9. Click **OK**, and then click **Print** or **OK** in the **Print** dialog box.



NOTE: To prevent jams, manually feed the iron-on transfer sheets into the paper tray one sheet at a time.

To print on transparencies

1. Load the transparency into the paper tray.
2. On the **File** menu in your software application, click **Print**.
3. Make sure you have selected the correct printer.
4. Click the button that opens the **Properties** dialog box.
Depending on your software application, this button might be called **Properties**, **Options**, **Printer Setup**, **Printer**, or **Preferences**.
5. Click the **Features** tab.
6. In the **Basic Options** area, click the appropriate transparency type in the **Paper Type** list.



TIP: If you want to make notations on the back of the transparencies and erase them later without scratching the original, click the **Advanced** tab, and select the **Mirror Image** check box.

7. In the **Resizing Options** area, click an appropriate size in the **Size** list.
8. Click **OK**, and then click **Print** or **OK** in the **Print** dialog box.



NOTE: The product automatically waits for transparencies to dry before releasing them. Ink dries slower on film than on plain paper. Make sure you allow enough time for the ink to dry before handling the transparency.

Related topics

- [“Paper basics” on page 9](#)
- [“View the print resolution” on page 25](#)
- [“Printing shortcuts” on page 25](#)

- “[Set the default print settings](#)” on page 26
- “[Stop the current job](#)” on page 97


Print a Web page

You can print a Web page from your Web browser on the HP Photosmart.

If you use Internet Explorer 6.0 or higher for Web browsing, you can use **HP Smart Web Printing** to ensure simple, predictable web printing with control over what you want and how you want it printed. You can access **HP Smart Web Printing** from the toolbar in Internet Explorer. For more information about **HP Smart Web Printing**, see the help file provided with it.

To print a Web page

1. Make sure you have paper loaded in the paper tray.
2. On the **File** menu in your Web browser, click **Print**.
The **Print** dialog box appears.
3. Make sure the product is the selected printer.
4. If your Web browser supports it, select the items on the Web page that you want to include in the printout.
For example, in Internet Explorer, click the **Options** tab to select options such as **As laid out on screen**, **Only the selected frame**, and **Print all linked documents**.
5. Click **Print** or **OK** to print the Web page.

 **TIP:** To print Web pages correctly, you might need to set your print orientation to **Landscape**.

Print using Maximum dpi

Use maximum dpi mode to print high-quality, sharp images.

To get the most benefit from maximum dpi mode, use it to print high-quality images such as digital photographs. When you select the maximum dpi setting, the printer software displays the optimized dots per inch (dpi) that the HP Photosmart printer will print. Printing in maximum dpi is supported on the following paper-types only:

- HP Premium Plus Photo Paper
- HP Premium Photo Paper
- HP Advanced Photo Paper
- Photo Hagaki cards

Printing in maximum dpi takes longer than printing with other settings and requires a large amount of disk space.

To print in Maximum dpi mode

1. Make sure you have paper loaded in the paper tray.
2. On the **File** menu in your software application, click **Print**.
3. Make sure the product is the selected printer.

4. Click the button that opens the **Properties** dialog box.
Depending on your software application, this button might be called **Properties**, **Options**, **Printer Setup**, **Printer**, or **Preferences**.
5. Click the **Advanced** tab.
6. In the **Features** area, select the **Enable maximum dpi setting** check box.
7. Click the **Features** tab.
8. In the **Paper Type** drop-down list, click **More**, and then select the appropriate paper type.
9. In the **Print Quality** drop-down list, click **Maximum dpi**.

 **NOTE:** To find out what dpi the product will print based on the paper type and print quality settings you selected, click **Resolution**.

10. Select any other print settings that you want, and then click **OK**.

Related topics

[“View the print resolution” on page 25](#)

View the print resolution


The printer software displays the print resolution in dots per inch (dpi). The dpi varies according to the paper type and print quality that you select in the printer software.

To view the print resolution

1. On the **File** menu in your software application, click **Print**.
2. Make sure the product is the selected printer.
3. Click the button that opens the **Properties** dialog box.
Depending on your software application, this button might be called **Properties**, **Options**, **Printer Setup**, **Printer**, or **Preferences**.
4. Click the **Features** tab.
5. In the **Paper Type** drop-down list, select the type of paper that you have loaded.
6. In the **Print Quality** drop-down list, select the appropriate print quality setting for your project.
7. Click the **Resolution** button to view the print resolution dpi for the paper type and print quality combination you selected.

Printing shortcuts

Use printing shortcuts to print with print settings that you use often. The printer software has several specially designed printing shortcuts that are available in the Printing Shortcuts list.

 **NOTE:** When you select a printing shortcut the appropriate printing options are automatically displayed. You can leave them as is, change them, or create your own shortcuts for commonly used tasks.

Use the Printing Shortcuts tab for the following print tasks:

- **General Everyday Printing:** Print documents quickly.
- **Photo Printing–Borderless:** Print to the top, bottom, and side edges of 10 x 15 cm (4 x 6 inch) and 13 x 18 cm (5 x 7 inch) HP Photo Papers.
- **Paper-saving Printing:** Print two-sided documents with multiple pages on same sheet to reduce paper usage.
- **Photo Printing–With White Borders:** Print a photo with a white border around the edges.
- **Fast/Economical Printing:** Produce draft-quality printouts quickly.
- **Presentation Printing:** Print high-quality documents, including letters and transparencies.
- **Two-sided (Duplex) Printing:** Print two-sided pages with the HP Photosmart manually.

To create a printing shortcut

1. On the **File** menu in your software application, click **Print**.
2. Make sure the product is the selected printer.
3. Click the button that opens the **Properties** dialog box.
Depending on your software application, this button might be called **Properties**, **Options**, **Printer Setup**, **Printer**, or **Preferences**.
4. Click the **Printing Shortcuts** tab.
5. In the **Printing Shortcuts** list, click a printing shortcut.
The print settings for the selected printing shortcut are displayed.
6. Change the print settings to those you want in the new printing shortcut.
7. Click **Save as** and type a name for the new printing shortcut, and then click **Save**.
The printing shortcut is added to the list.

To delete a printing shortcut

1. On the **File** menu in your software application, click **Print**.
2. Make sure the product is the selected printer.
3. Click the button that opens the **Properties** dialog box.
Depending on your software application, this button might be called **Properties**, **Options**, **Printer Setup**, **Printer**, or **Preferences**.
4. Click the **Printing Shortcuts** tab.
5. In the **Printing Shortcuts** list, click the printing shortcut that you want to delete.
6. Click **Delete**.
The printing shortcut is removed from the list.



NOTE: Only the shortcuts that you have created can be deleted. The original HP shortcuts cannot be deleted.

Set the default print settings

If there are settings that you frequently use for printing, you might want to make them the default print settings so they are already set when you open the **Print** dialog box from within your software application.

To change the default print settings

1. In the HP Solution Center, click **Settings**, point to **Print Settings**, and then click **Printer Settings**.
2. Make changes to the print settings, and click **OK**.



Print

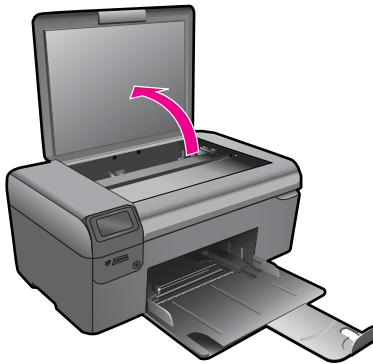
6 Scan

- [“Scan to a computer”](#) on page 29
- [“Scan to a memory card”](#) on page 30
- [“Scan and reprint photos”](#) on page 39

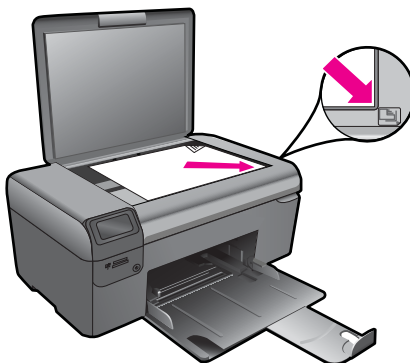
Scan to a computer

To scan to a computer

1. Load original.
 - a. Lift lid on product.



- b. Load original print side down on right front corner of glass.



- c. Close lid.
2. Start scan.
 - a. Press button next to **Scan** on Home screen.
 - b. Press button next to **Scan to PC**.
3. View the animation for this topic.

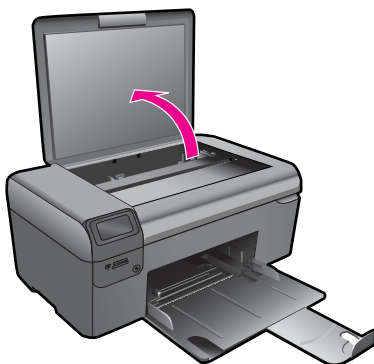
Related topics

["Stop the current job" on page 97](#)

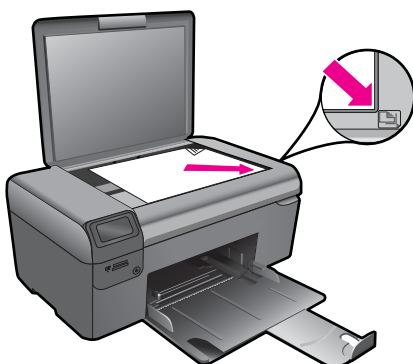
Scan to a memory card

To save a scan to a memory card

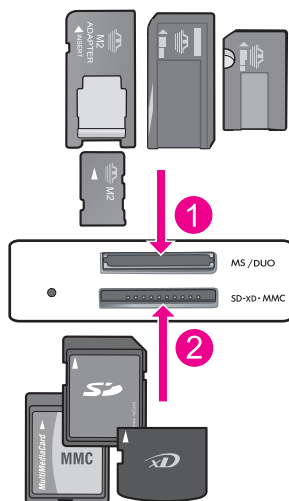
1. Load original.
 - a. Lift lid on product.



- b. Load original print side down on right front corner of glass.



- c. Close lid.
2. Select **Scan**.
 - a. Press button next to **Scan** on Home screen.
 - b. Press button next to **Scan to Memory Card**.
3. Insert memory device.



- | | |
|---|--|
| 1 | Memory Stick, Memory Stick Pro, Memory Stick Select, Memory Stick Magic Gate, Memory Stick Duo or Pro Duo (adapter optional), Memory Stick Pro-HG Duo (adapter optional), or Memory Stick Micro (adapter required) |
| 2 | MultiMediaCard (MMC), MMC Plus, Secure MultiMedia Card, MMC Mobile (RS-MMC; adapter required), Secure Digital (SD), Secure Digital Mini, Secure Digital High Capacity (SDHC), TransFlash MicroSD Card (adapter required), or xD-Picture card |

4. Start scan.
 - ▲ Press button next to **Scan to Memory Card**.
5. View the animation for this topic.

Related topics

[“Stop the current job” on page 97](#)



7 Copy

- [“Copy text or mixed documents”](#) on page 34
- [“Copy photos \(reprint\)”](#) on page 39

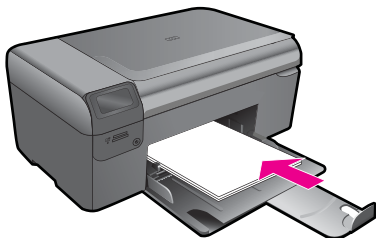
Copy text or mixed documents

Copy text or mixed documents

1. Do one of the following:


Make a black and white copy

- a. Load paper.
 - ☐ Load full-size paper in paper tray.

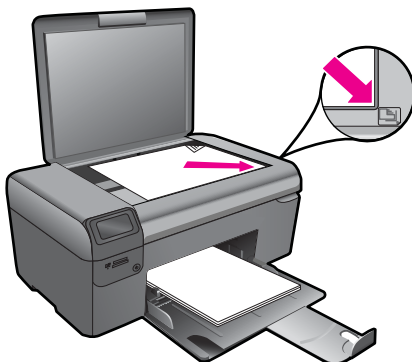


- b. Load original.
 - ☐ Lift lid on product.



 **TIP:** To make copies of thick originals, such as books, you can remove the lid.

- ☐ Load original print side down on right front corner of glass.

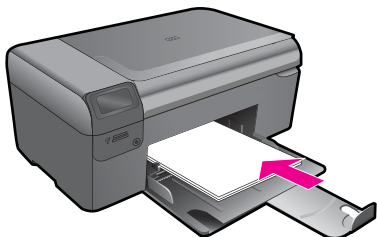


- ☐ Close lid.
- c. Select **Copy**.
 - ☐ Press button next to **Copy**.
 - ☐ Press button next to **Black Copy**.
 - ☐ Press button next to **Actual Size**.
 - ☐ Press button next to **Copies** to increase number of copies.
- d. Start copy.
 - ☐ Press **OK**.

Make a color copy

a. Load paper.


- ☐ Load full-size paper in paper tray.



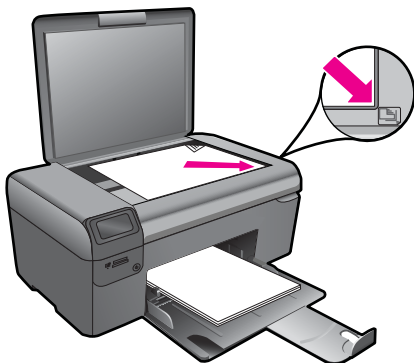
b. Load original.

- ☐ Lift lid on product.



 **TIP:** To make copies of thick originals, such as books, you can remove the lid.

- ☐ Load original print side down on right front corner of glass.



- ☐ Close lid.
- c. Select **Copy**.
 - ☐ Press button next to **Copy**.
 - ☐ Press button next to **Color Copy**.
 - ☐ Press button next to **Actual Size**.
 - ☐ Press button next to **Copies** to increase number of copies.
- d. Start copy.
 - ☐ Press **OK**.
- 2. View the animation for this topic.

Related topics

- ["Change the copy settings" on page 37](#)
- ["Stop the current job" on page 97](#)

Change the copy settings

To set the paper size from the control panel

1. Press the button next to **Copy**.
2. Select the copy type.
3. Press the button next to **8.5 x 11 Plain**.

To set the copy size from the control panel

1. Press the button next to **Copy**.
2. Select the copy type.
3. Press the button next to **Actual Size**.

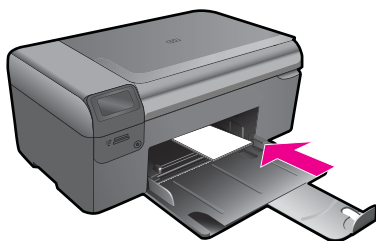
To set the number of copies from the control panel

1. Press the button next to **Copy**.
2. Select the copy type.
3. Press the button next to **Copies** to increase the number of copies.

8 Reprint photos

To reprint an original photo

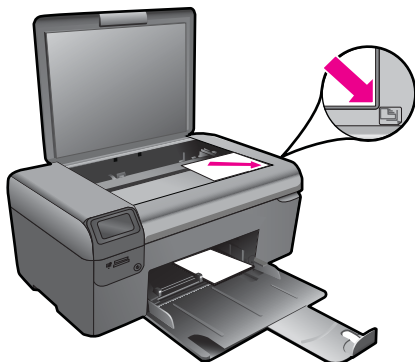
1. Load paper.
 - ▲ Load up to 13 x 18 cm (5 x 7 inch) photo paper in paper tray.



2. Select project type.
 - a. Press button next to **Photo** on Home screen.
 - b. Press button next to **Photo Original Reprint**.
3. Load original.
 - a. Lift lid on product.



- b. Load original print side down on right front corner of glass.



- c. Close lid.
- d. Press **OK**.
- 4. Reprint photo.
 - a. Press **OK**.
 - b. Press button next to **Prints** to increase number of copies.
 - c. Press **OK**.
- 5. View the animation for this topic.


Related topics

["Stop the current job" on page 97](#)

9 Save photos

You can use the HP Photosmart Software installed on your computer to transfer photos from a memory card to your computer's hard drive for advanced photo editing, sharing photos online, and printing from your computer.

Before transferring photos to your computer, you need to remove the memory card from your digital camera and insert it in the appropriate memory card slot on the HP Photosmart.

 **NOTE:** The HP Photosmart must be connected to a computer that has the HP Photosmart Software installed on it.

To save photos

1. Insert your memory card into the appropriate slot on the product.
The software opens on your computer.
2. Follow the onscreen prompts on your computer to save the photos to your computer.


 **NOTE:** Only images that were not previously saved are copied to your computer.

10 Maintain the HP Photosmart

- [Check the estimated ink levels](#)
- [Replace the cartridges](#)
- [Order ink supplies](#)
- [Cartridge warranty information](#)
- [Print and evaluate a print quality report](#)

Check the estimated ink levels

You can easily check the ink supply level to determine how soon you might need to replace a cartridge. The ink supply level shows an estimate of the amount of ink remaining in the cartridges.


 **NOTE:** If you have installed a refilled or remanufactured cartridge, or a cartridge that has been used in another printer, the ink level indicator might be inaccurate or unavailable.

NOTE: Ink level warnings and indicators provide estimates for planning purposes only. When you receive a low-ink warning message, consider having a replacement cartridge available to avoid possible printing delays. You do not have to replace the cartridges until the print quality is unacceptable.

NOTE: Ink from the cartridges is used in the printing process in a number of different ways, including in the initialization process, which prepares the product and cartridges for printing, and in printhead servicing, which keeps print nozzles clear and ink flowing smoothly. In addition, some residual ink is left in the cartridge after it is used. For more information, see www.hp.com/go/inkusage.

To check the ink levels from the HP Photosmart Software

1. In the HP Solution Center, click **Settings**, point to **Print Settings**, and then click **Printer Toolbox**.

 **NOTE:** You can also open the **Printer Toolbox** from the **Print Properties** dialog box. In the **Print Properties** dialog box, click the **Features** tab, and then click the **Printer Services** button.

The **Printer Toolbox** appears.

2. Click the **Estimated Ink Level** tab.
The estimated ink levels for the ink cartridges appear.

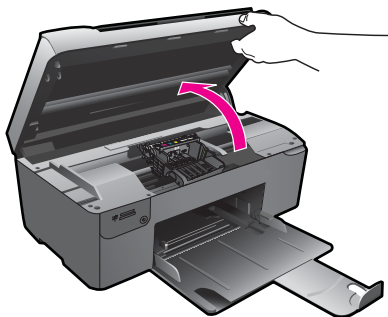
Related topics

["Order ink supplies" on page 46](#)

Replace the cartridges

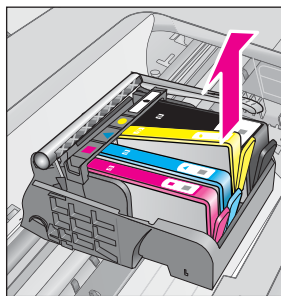
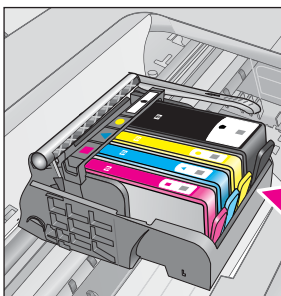
To replace the cartridges

1. Check that power is on.
2. Remove cartridge.
 - a. Open cartridge access door.

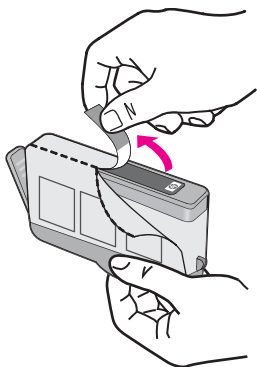


Wait for print carriage to move to center of product.

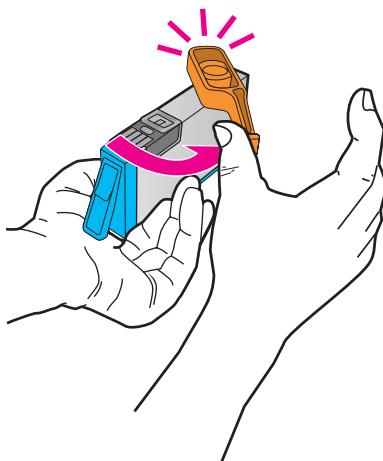
- b. Press tab on cartridge, then remove it from slot.



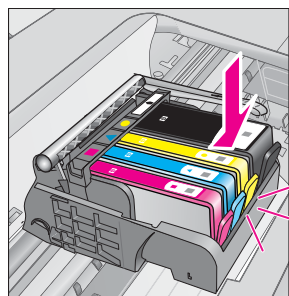
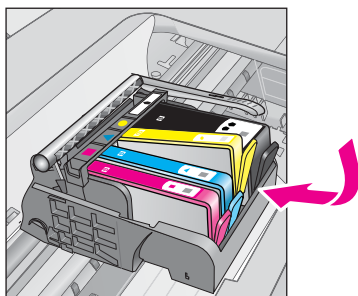
- 3. Insert new cartridge.**
- a. Remove cartridge from packaging.**



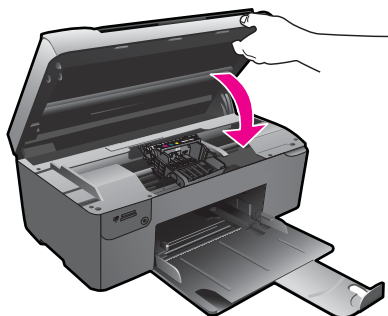
- b. Twist orange cap to snap it off. A forceful twist may be required to remove cap.**



- c. Match color icons, then slide cartridge into slot until it clicks into place.**



- d. Close cartridge door.



4. Align cartridges.
 - a. When prompted, press **OK** to print cartridge alignment page.
 - b. Load page print side down on right front corner of glass, and then press **OK** to scan page.
 - c. Remove alignment page and recycle or discard it.
5. View the animation for this topic.


Related topics

["Order ink supplies" on page 46](#)

Order ink supplies

To learn which HP supplies work with your product, order supplies online, or create a printable shopping list, open HP Solution Center, and select the online shopping feature.

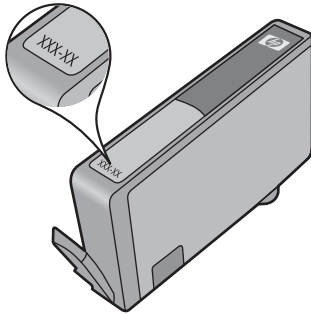
Cartridge information and links to online shopping also appear on ink alert messages. In addition, you can find cartridge information and order online by visiting www.hp.com/buy/supplies.

 **NOTE:** Ordering cartridges online is not supported in all countries/regions. If it is not supported in your country/region, contact a local HP reseller for information about purchasing cartridges.

Cartridge warranty information

The HP cartridge warranty is applicable when the product is used in its designated HP printing device. This warranty does not cover HP ink products that have been refilled, remanufactured, refurbished, misused, or tampered with.

During the warranty period the product is covered as long as the HP ink is not depleted and the end of warranty date has not been reached. The end of warranty date, in YYYY/MM/DD format, may be found on the product as indicated:



For a copy of the HP Limited Warranty Statement, see the printed documentation that came with the product.

Print and evaluate a print quality report

Print quality issues can occur for a variety of reasons. You might be using the wrong software settings or printing a poor quality source file, or there might be a problem with the printing system in the HP Photosmart. If you are unhappy with the quality of your prints, you can print a print quality report to help you determine if the printing system is working properly.

To print a print quality report

1. Load letter or A4 unused plain white paper into the paper tray.
2. Press the top-left, bottom-left, top-left, and top-left buttons in sequence. The **Engineering Menu** appears.
3. Press **OK** to select **Manufacturing Menu**.
4. Press **OK** to select **reports menu**.
5. Press **OK** to select **print-mech tap tests**.
6. Press the top-right button until the code displayed changes to 72.
7. Press **OK**.

The product prints a print quality report that you can use to diagnose print quality issues.

To evaluate the print quality report

- 1. Check the ink levels shown on the page. If a cartridge shows very low ink levels and you find the print quality unacceptable, consider replacing that ink cartridge. Print quality typically deteriorates as cartridges run out of ink.



NOTE: If the print quality report is not legible, you can check the estimated ink levels from the control panel or HP Photosmart Software.

NOTE: Ink level warnings and indicators provide estimates for planning purposes only. When you receive a low-ink warning message, consider having a replacement cartridge available to avoid possible printing delays. You do not need to replace the ink cartridges until print quality becomes unacceptable.

- 2. Look at the color bars in the middle of the page. The bars should be solid, have sharp edges, and extend with uniform color all the way across the page.

Figure 10-1 Color bars - expected result

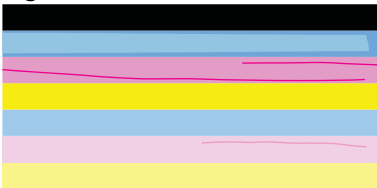


- If any of the color bars are irregularly streaked, lighter on one side, or contain one or more streaks of a different color, refer to the following steps.

Figure 10-2 Color bars - irregularly streaked or faded bar (top bar)



Figure 10-3 Color bars - color mixing (yellow bar contains magenta streaks)



- Check the estimated ink levels in the cartridges.
- Check if the cartridge corresponding to the streaked bar has the orange tab removed.
- Reinstall the cartridge and make sure all of the cartridges are properly installed.
- Clean the printhead, and then print this diagnostic page again.
- If cleaning the printhead does not solve this print quality issue, replace the cartridge corresponding to the streaked bar.



NOTE: If replacing the cartridge does not solve this print quality issue, contact HP support for service.

- If any of the color bars show regular white streaks, refer to the following steps.
 - If line 11 on the diagnostic page reads **PHA TTOE = 0**, align the printer.
 - If line 11 on the diagnostic page shows a different value or aligning does not help, clean the printhead.



NOTE: If cleaning the printhead does not solve this print quality issue, contact HP support for service.

3. Look at the large text above the alignment pattern. The type should be sharp and clear.

Figure 10-4 Sample text area - expected result

I ABCDEFG abcdefg

- If the type is jagged, align the printer, and then print this diagnostic page again.

Figure 10-5 Sample text area - jagged text

I ABCDEFG abcdefg

- If the text is uneven and ragged at one end, clean the printhead, and then print this diagnostic page again. If this occurs right after a new cartridge is installed, the automatic device servicing routines may solve the problem in a day or so.

Figure 10-6 Sample text area - uneven ink distribution

I ABCDEFG abcdefg I

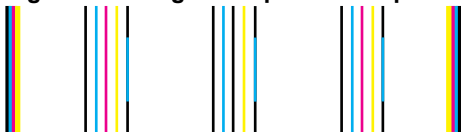
- If the text is smeared, check if the paper is curled, clean the printhead, and then print this diagnostic page again.

Figure 10-7 Sample text area - streaks or smears

1 ABCDEFG abcdefg

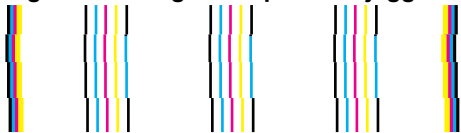
4. Look at the alignment pattern above the color bars. The lines should be straight and sharp.


Figure 10-8 Alignment pattern - expected result



If the lines are jagged, align the printer, and then print this diagnostic page again.

Figure 10-9 Alignment pattern - jagged lines



 **NOTE:** If aligning the printer does not solve this print quality issue, contact HP support for service.

If you do not see any defects on the print quality report, then the printing system is working correctly. There is no reason to replace supplies or have the product serviced, because they are functioning properly. If you still have a print quality problem, here are some other things you can check:

- Check the paper.
- Check the print settings.
- Make sure your image has sufficient resolution.
- If the problem seems confined to a band near the edge of your printout, use the software you installed with the product or another software application to rotate the image 180 degrees. The problem might not appear on the other end of the print.

11 Solve a problem

This section contains the following topics:

- [HP support](#)
- [Setup troubleshooting](#)
- [Print troubleshooting](#)
- [Print quality troubleshooting](#)
- [Memory card troubleshooting](#)
- [Scan troubleshooting](#)
- [Copy troubleshooting](#)
- [Errors](#)

HP support

- [HP support by phone](#)
- [Additional warranty options](#)

HP support by phone

Phone support options and availability vary by product, country/region, and language.

This section contains the following topics:

- [Phone support period](#)
- [Placing a call](#)
- [After the phone support period](#)

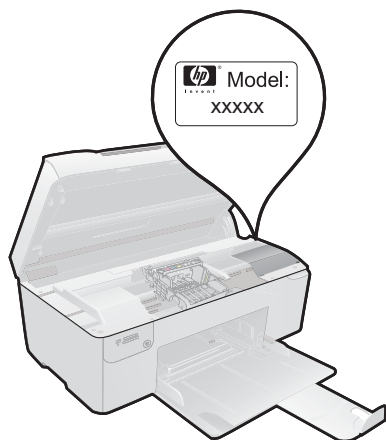
Phone support period

One year of phone support is available in North America, Asia Pacific, and Latin America (including Mexico). To determine the duration of phone support in Europe, the Middle East, and Africa, go to www.hp.com/support. Standard phone company charges apply.

Placing a call

Call HP support while you are in front of the computer and the product. Be prepared to provide the following information:

- Product name (HP Photosmart B109 series)
- Model number (located near the cartridge access area)



- Serial number (located on the back or bottom of the product)
- Messages that appear when the situation occurs
- Answers to these questions:
 - Has this situation happened before?
 - Can you re-create it?
 - Did you add any new hardware or software to your computer at about the time that this situation began?
 - Did anything else occur prior to this situation (such as a thunderstorm, product was moved, etc.)?

For the list of support phone numbers, visit www.hp.com/support.

After the phone support period

After the phone support period, help is available from HP at an additional cost. Help may also be available at the HP online support Web site: www.hp.com/support. Contact your HP dealer or call the support phone number for your country/region to learn more about support options.

Additional warranty options

Extended service plans are available for the HP Photosmart at additional costs. Go to www.hp.com/support, select your country/region and language, then explore the services and warranty area for information about the extended service plans.

Setup troubleshooting

This section contains setup troubleshooting information for the product.

Many issues are caused when the product is connected to the computer using a USB cable before the product software is installed on the computer. If you connected the product to your computer before the software installation screen prompted you to do so, you must follow these steps:

Troubleshooting common setup issues

1. Disconnect the USB cable from the computer.
2. Uninstall the software (if you have already installed it).
For more information, see [“Uninstall and reinstall the software” on page 57](#).
3. Restart your computer.
4. Turn off the product, wait one minute, then restart it.
5. Reinstall the HP Photosmart software.

△ **CAUTION:** Do not connect the USB cable to the computer until prompted by the software installation screen.

This section contains the following topics:

- [The product will not turn on](#)
- [After setting up the product, it does not print](#)
- [The wrong measurements are showing in menus on the display](#)
- [The registration screen does not appear](#)
- [Uninstall and reinstall the software](#)

The product will not turn on

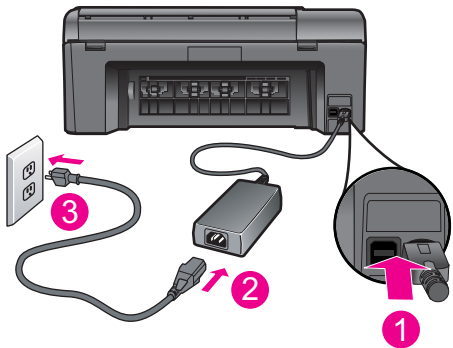
Try the following solutions if there are no light indications, no noise, and no movement from the product when you turn it on.

- [Solution 1: Check the power cord](#)
- [Solution 2: Reset the product](#)
- [Solution 3: Press the On button more slowly](#)
- [Solution 4: Contact HP to replace the power supply](#)
- [Solution 5: Contact HP support for service](#)

Solution 1: Check the power cord

Solution:

- Make sure you are using the power cord that came with the product.
- Make sure the power cord is firmly connected to both the product and the power adapter. Plug the power cord into a power outlet, surge protector, or power strip.



1	Power connection
2	Power cord and adapter
3	Power outlet

- If you are using a power strip, make sure the power strip is turned on. Or, try plugging the product directly into a power outlet.
- Test the power outlet to make sure it is working. Plug in an appliance that you know works, and see if the appliance has power. If not, then there might be a problem with the power outlet.
- If you plugged the product into a switched outlet, make sure the outlet is switched on. If it is switched on but still does not work, then there might be a problem with the power outlet.

Cause: There was a problem with the power cord or the power supply.
If this did not solve the issue, try the next solution.

Solution 2: Reset the product

Solution: Turn off the product, and then unplug the power cord. Plug the power cord back in, and then press the **On** button to turn on the product.

Cause: The product experienced an error.
If this did not solve the issue, try the next solution.

Solution 3: Press the On button more slowly

Solution: The product might not respond if you press the **On** button too quickly. Press the **On** button once. It might take a few minutes for the product to turn on. If you press the **On** button again during this time, you might turn the product off.

△ **CAUTION:** If the product still does not turn on, it might have a mechanical failure. Unplug the product from the power outlet.

Contact HP support for service.

Go to: www.hp.com/support. If prompted, choose your country/region, and then click **Contact HP** for information on calling for technical support.

Cause: You pressed the **On** button too quickly.

If this did not solve the issue, try the next solution.

Solution 4: Contact HP to replace the power supply

Solution: Contact HP support to request a power supply for the product.

Go to: www.hp.com/support.

If prompted, choose your country/region, and then click **Contact HP** for information on calling for technical support.

Cause: The power supply was not intended for use with this product.

If this did not solve the issue, try the next solution.

Solution 5: Contact HP support for service

Solution: If you have completed all of the steps provided in the previous solutions and are still having a problem, contact HP support for service.

Go to: www.hp.com/support.

If prompted, choose your country/region, and then click **Contact HP** for technical support.

Cause: You might need assistance to enable the product or software to function properly.

After setting up the product, it does not print

Try the following solutions to resolve the issue. Solutions are listed in order, with the most likely solution first. If the first solution does not solve the problem, continue trying the remaining solutions until the issue is resolved.

- [Solution 1: Press the On button to turn on the product](#)
- [Solution 2: Set your product as the default printer](#)
- [Solution 3: Check the connection between the product and computer](#)

Solution 1: Press the On button to turn on the product

Solution: Look at the display on the product. If the display is blank and the **On** button is not lit, the product is turned off. Make sure the power cord is firmly connected to the product and plugged into a power outlet. Press the **On** button to turn on the product.

Cause: The product might not have been turned on.

If this did not solve the issue, try the next solution.

Solution 2: Set your product as the default printer

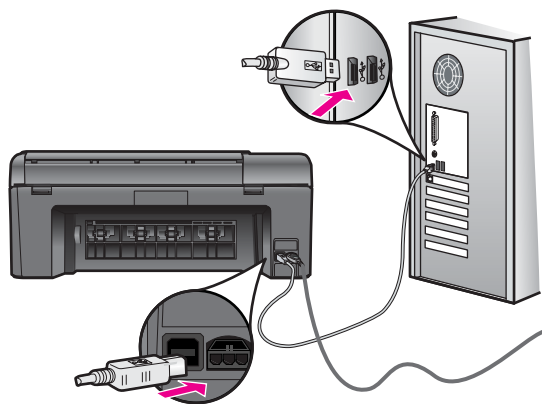
Solution: Check your computer documentation to change your product to be the default printer.

Cause: You sent the print job to the default printer, but this product was not the default printer.

If this did not solve the issue, try the next solution.

Solution 3: Check the connection between the product and computer

Solution: Check the connection from the product to your computer. Verify that the USB cable is securely plugged into the USB port on the back of the product. Make sure the other end of the USB cable is plugged into a USB port on your computer. After the cable is connected properly, turn off the product and then on again.



For more information on setting up the product and connecting it to your computer, see the setup instructions that came with the product.

Cause: The product and computer were not communicating with each other.

The wrong measurements are showing in menus on the display

Solution: Change the language setting.

To set your language and country/region

1. Press the button next to **Copy** on the Home screen.
The **Copy Menu** appears.
2. Press the top-right, middle-left, and bottom-left buttons in sequence.
The **Basic Settings** menu appears.
3. Press the button next to **Set Language**.
4. Press the buttons next to the up arrow or down arrow icons on the display to scroll through the languages. When the language you want to use is highlighted, press **OK**.
5. When prompted, press the button next to **Yes** for confirmation.
The **Basic Settings** menu reappears.
6. Press the button next to **Set Region**.
7. Press the buttons next to the up arrow or down arrow icons on the display to scroll through the countries/regions. When the country/region you want to use is highlighted, press **OK**.
8. When prompted, press the button next to **Yes** for confirmation.

Cause: You might have selected the incorrect country/region when setting up the product. The country/region you select determines the paper sizes shown on the display.

The registration screen does not appear

Solution: You can access the registration (Sign up now) screen from the Windows taskbar by clicking **Start**, pointing to **Programs** or **All Programs**, **HP**, **Photosmart B109a series**, and then clicking **Product Registration**.

Cause: The registration screen did not launch automatically.

Uninstall and reinstall the software

If your installation is incomplete, or if you connected the USB cable to the computer before prompted by the software installation screen, you might need to uninstall and then reinstall the software. Do not simply delete the HP Photosmart application files from your computer. Make sure to remove them properly using the uninstall utility provided when you installed the software that came with the HP Photosmart.

To uninstall and reinstall the software

1. Disconnect the product from your computer.
2. On the Windows taskbar, click **Start**, **Settings**, **Control Panel** (or just **Control Panel**).
3. Double-click **Add/Remove Programs** (or click **Uninstall a program**).

4. Select **HP Photosmart All-In-One Driver Software**, and then click **Change/Remove**.

Follow the onscreen instructions.

5. Restart your computer.



NOTE: It is important that you disconnect the product before restarting your computer. Do not connect the product to your computer until after you have reinstalled the software.

6. Insert the product CD-ROM into your computer's CD-ROM drive and then start the Setup program.

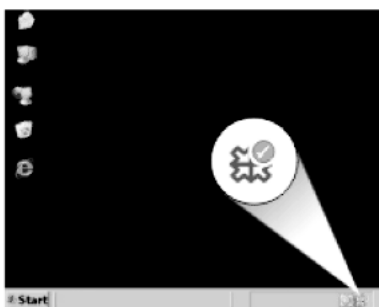


NOTE: If the Setup program does not appear, locate the setup.exe file on the CD-ROM drive and double-click it.

NOTE: If you no longer have the installation CD, you can download the software from www.hp.com/support.

7. Follow the onscreen instructions and the setup instructions that came with the product.

When the software installation is complete, the **HP Digital Imaging Monitor** icon appears in the Windows system tray.



Print troubleshooting

Try the following solutions to resolve the issue. Solutions are listed in order, with the most likely solution first. If the first solution does not solve the problem, continue trying the remaining solutions until the issue is resolved.

- [Check cartridges](#)
- [Check paper](#)
- [Check product](#)
- [Check the print settings](#)
- [Reset the product](#)
- [Contact HP support for service](#)

Check cartridges

Follow these steps.

- [Step 1: Make sure you are using genuine HP ink cartridges](#)
- [Step 2: Check the ink levels](#)

Step 1: Make sure you are using genuine HP ink cartridges

Solution: Check to see if your ink cartridges are genuine HP ink cartridges.

HP recommends that you use genuine HP ink cartridges. Genuine HP ink cartridges are designed and tested with HP printers to help you easily produce great results, time after time.



NOTE: HP cannot guarantee the quality or reliability of non-HP supplies. Product service or repairs required as a result of using a non-HP supply will not be covered under warranty.

If you believe you purchased genuine HP ink cartridges, go to:

www.hp.com/go/anticounterfeit

Cause: Non-HP ink cartridges were being used.

Step 2: Check the ink levels

Solution: Check the estimated ink levels in the cartridges.



NOTE: Ink level warnings and indicators provide estimates for planning purposes only. When you receive a low-ink warning message, consider having a replacement cartridge available to avoid possible printing delays. You do not need to replace the cartridges until print quality becomes unacceptable.

For more information, see:

[“Check the estimated ink levels” on page 43](#)

Cause: The ink cartridges might have insufficient ink.

Check paper

Follow these steps.

- [Step 1: Use the correct paper type](#)
- [Step 2: Load the stack of paper correctly](#)

Step 1: Use the correct paper type


Solution: HP recommends that you use HP papers or any other paper type that is appropriate for the product. Make sure only one type of paper is loaded at a time.

Always make sure the paper you are printing on is flat. For best results when printing images, use HP Advanced Photo Paper.

Cause: The paper type was incorrect or more than one type of paper was loaded.

Step 2: Load the stack of paper correctly

Solution: Remove the stack of paper from the paper tray, reload the paper, and then slide the paper-width guide inward until it stops at the edge of the paper.

 **NOTE:** Do not leave unused photo paper in the paper tray. The paper might start to curl, which could reduce the quality of your printout. For best results, do not allow printed photos to stack up in the paper tray.

For more information, see:

[“Load media” on page 12](#)

Cause: The paper was loaded incorrectly.

Check product

Follow these steps.

- [Step 1: Align the printer](#)
- [Step 2: Clean the printhead](#)

Step 1: Align the printer

Solution: Aligning the printer can help ensure excellent print quality.


To align the printer from the HP Photosmart Software

1. Load letter, A4, or legal unused plain white paper into the paper tray.
2. In the HP Solution Center, click **Settings**.
3. In the **Print Settings** area, click **Printer Toolbox**.

 **NOTE:** You can also open the **Printer Toolbox** from the **Print Properties** dialog box. In the **Print Properties** dialog box, click the **Features** tab, and then click **Printer Services**.

The **Printer Toolbox** appears.

4. Click the **Device Services** tab.
5. Click **Align the Printer**.
6. When prompted, ensure plain white letter or A4 paper is loaded in the paper tray, then press **OK**.

 **NOTE:** If you have colored paper loaded in the paper tray when you align the print cartridges, the alignment will fail. Load unused plain white paper into the paper tray, and then try the alignment again.

The product prints an alignment sheet.

7. Load the page print side down on the right front corner of the glass, and then press **OK** to scan the page.
When the **On** button stops flashing, the alignment is complete and the page can be removed. Recycle or discard the page.

Cause: The printer needed to be aligned.

Step 2: Clean the printhead

Solution: If the previous step did not resolve the issue, try cleaning the printhead.

To clean the printhead from the HP Photosmart Software

1. Load letter, A4, or legal unused plain white paper into the paper tray.
2. In the HP Solution Center, click **Settings**.
3. In the **Print Settings** area, click **Printer Toolbox**.



NOTE: You can also open the **Printer Toolbox** from the **Print Properties** dialog box. In the **Print Properties** dialog box, click the **Features** tab, and then click **Printer Services**.

The **Printer Toolbox** appears.

4. Click the **Device Services** tab.
5. Click **Clean the printhead**.
6. Follow the prompts until you are satisfied with the quality of the output, and then click **Done**.

There are two stages of cleaning. Each stage lasts about two minutes, uses one sheet of paper, and uses an increasing amount of ink. After each stage, review the quality of the printed page. You should only initiate the next phase of cleaning if the print quality is poor.

If print quality still seems poor after you complete both stages of cleaning, try aligning the printer. If print quality problems persist after cleaning and aligning, contact HP support.

After cleaning the printhead, print a print quality report. Evaluate the print quality report to see if the print quality problem still exists.

For more information, see:

[“Print and evaluate a print quality report” on page 47](#)

Cause: The printhead needed to be cleaned.

Check the print settings

Solution: Try the following:

- Check the print settings to see if the color settings are incorrect.
For example, check to see if the document is set to print in grayscale. Or, check to see if advanced color settings such as saturation, brightness, or color tone, are set to modify the appearance of colors.
- Check the print quality setting and make sure it matches the type of paper loaded in the product.
You might need to choose a lower print quality setting if colors are running into each other. Or, choose a higher setting if you are printing a high-quality photo, and then make sure photo paper such as HP Advanced Photo Paper is loaded in the paper tray. For information on using the maximum dpi mode, see [“Print using Maximum dpi” on page 24](#).
- Make sure the margin settings for the document do not exceed the printable area of the product.

To select a print speed or quality

1. Make sure you have paper loaded in the paper tray.
2. On the **File** menu in your software application, click **Print**.
3. Make sure the product is the selected printer.
4. Click the button that opens the **Properties** dialog box.
Depending on your software application, this button might be called **Properties**, **Options**, **Printer Setup**, **Printer**, or **Preferences**.
5. Click the **Features** tab.
6. In the **Paper Type** drop-down list, select the type of paper that you have loaded.
7. In the **Print Quality** drop-down list, select the appropriate quality setting for your project.



NOTE: To find out what dpi the product will print based on the paper type and print quality settings you selected, click **Resolution**.

To check your margin settings

1. Preview your print job before sending it to the product.
In most software applications, click the **File** menu, and then click **Print Preview**.
2. Check the margins.
The product uses the margins you have set in your software application, as long as they are greater than the minimum margins the product supports. For more information about setting margins in your software application, see the documentation that came with the software.
3. Cancel the print job if the margins are not satisfactory, and then adjust the margins in your software application.

Cause: The print settings were not set correctly.

Reset the product

Solution: Turn off the product, and then unplug the power cord. Plug the power cord back in, and then press the **On** button to turn on the product.

Cause: The product experienced an error.

Contact HP support for service

Solution: If you have completed all of the steps provided in the previous solutions and are still having a problem, contact HP support for service.

Go to: www.hp.com/support.

If prompted, choose your country/region, and then click **Contact HP** for technical support.

Cause: You might need assistance to enable the product or software to function properly.

Print quality troubleshooting

Use this section to solve these print quality problems:

- [Photo printouts are hazy, blurry, or have inaccurate color](#)

Photo printouts are hazy, blurry, or have inaccurate color

Solution: For best photo color quality, do not allow printouts to stack on top of photos in the paper tray.

Cause: When printouts are stacked on top of a photo before the ink is completely dry, some color distortion may occur in the photo.

Memory card troubleshooting

Use this section to solve these memory card problems:

- [The product does not read the memory card](#)
- [The photos on the memory card do not transfer to my computer](#)

The product does not read the memory card

Try the following solutions to resolve the issue. Solutions are listed in order, with the most likely solution first. If the first solution does not solve the problem, continue trying the remaining solutions until the issue is resolved.

- [Step 1: Insert the memory card properly](#)
- [Step 2: Remove the additional memory card](#)
- [Step 3: Reformat the memory card in your digital camera](#)

Step 1: Insert the memory card properly

Solution: Turn the memory card so that the label faces up and the contacts are facing the product, and then push the card forward into the appropriate slot until the Photo light turns on.

After the memory card has been inserted properly, the Photo light will blink for a few seconds, and then remain lit.

Cause: The memory card was inserted backwards or upside down.

If this did not solve the issue, try the next solution.

Step 2: Remove the additional memory card

Solution: You can insert only one memory card at a time.

If more than one memory card is inserted, an error message will appear on the display. Remove the additional memory card to resolve the problem.

Cause: You had inserted more than one memory card.

If this did not solve the issue, try the next solution.

Step 3: Reformat the memory card in your digital camera

Solution: Check the computer screen for an error message telling you that the images on the memory card are corrupted.

If the file system on the card is corrupt, reformat the memory card in your digital camera. For more information, see the documentation that came with your digital camera.

△ **CAUTION:** Reformatting the memory card will delete any photos stored on the card. If you have previously transferred the photos from your memory card to a computer, try printing the photos from the computer. Otherwise, you will need to retake any photos you might have lost.

Cause: The memory card file system was corrupted.

The photos on the memory card do not transfer to my computer

Try the following solutions.

- [Solution 1: Install the product software](#)
- [Solution 2: Check the connection from the product to your computer](#)

Solution 1: Install the product software

Solution: Install the product software that came with the product. If it is installed, restart your computer.

To install the product software

1. Insert the product CD-ROM into your computer's CD-ROM drive and then start the Setup program.
2. When prompted, click **Install More Software** to install the product software.
3. Follow the onscreen instructions and the setup instructions that came with the product.

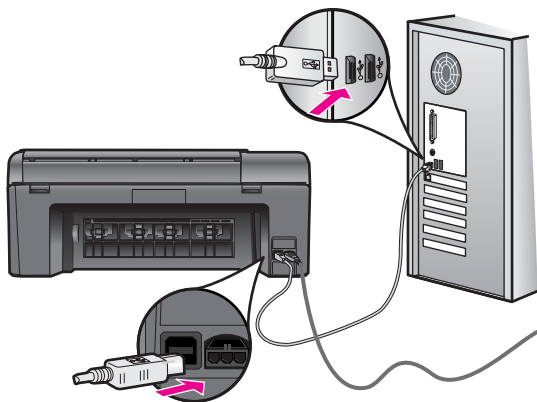
Cause: The product software was not installed.

If this did not solve the issue, try the next solution.

Solution 2: Check the connection from the product to your computer

Solution: Check the connection from the product to your computer. Verify that the USB cable is securely plugged into the USB port on the back of the product. Make

sure the other end of the USB cable is plugged into a USB port on your computer. After the cable is connected properly, turn off the product and then on again.



For more information on setting up the product and connecting it to your computer, see the setup instructions that came with the product.

Cause: The product was not properly connected to the computer.

Scan troubleshooting

Use this section to solve these scan problems:

- [Scanned image is incorrectly cropped](#)
- [Scanned image shows dotted lines instead of text](#)
- [Text format is incorrect](#)
- [Text is incorrect or missing](#)

Scanned image is incorrectly cropped

Solution: The autocropping feature in the software crops anything that is not part of the main image. Sometimes this might not be what you want. In that case, turn off autocropping in the software and crop the scanned image manually, or not at all.

Cause: The software was set to automatically crop scanned pictures.

Scanned image shows dotted lines instead of text

Solution: Make a black-and-white copy of the original and then scan the copy.

Cause: If you used the **Text** image type to scan text that you planned to edit, the scanner might not have recognized color text. The **Text** image type scans at 300 x 300 dpi, in black and white.

If you scanned an original that has graphics or artwork surrounding the text, the scanner might not have recognized the text.

Text format is incorrect

Solution: Some applications cannot handle framed text formatting. Framed text is one of the scan document settings in the software. It maintains complex layouts, such as multiple columns from a newsletter, by putting the text in different frames (boxes) in the destination application. In the software, select the correct format so that the scanned text layout and formatting are retained.

Cause: The scan document settings were incorrect.

Text is incorrect or missing

Try the following solutions to resolve the issue. Solutions are listed in order, with the most likely solution first. If the first solution does not solve the problem, continue trying the remaining solutions until the issue is resolved.

- [Solution 1: Adjust the brightness in the software](#)
- [Solution 2: Clean the glass and lid](#)
- [Solution 3: Select the correct OCR language](#)

Solution 1: Adjust the brightness in the software

Solution: Adjust the brightness in the software, and then rescan the original.

Cause: The brightness was not set correctly.

If this did not solve the issue, try the next solution.

Solution 2: Clean the glass and lid

Solution: Turn off the product, unplug the power cord, and use a soft cloth to wipe the glass and the back of the document lid.

Cause: Debris might have been stuck on the glass or on the back of the document lid. This can cause poor-quality scans.

If this did not solve the issue, try the next solution.

Solution 3: Select the correct OCR language

Solution: Select the correct OCR language in the software.



NOTE: If you are using HP Photosmart Essential, the Optical Character Recognition (OCR) software might not be installed on your computer. To install the OCR software, you must re-insert the software disk and select **OCR** under the **Custom** installation options.

Cause: The scan document settings were not set to the correct optical character recognition (OCR) language. The **OCR language** tells the software how to interpret the characters it sees in the original image. If the **OCR language** does not match the language in the original, the scanned text might be incomprehensible.

Copy troubleshooting

Use this section to solve these copy problems:

- [Resize to Fit is not working as expected](#)

Resize to Fit is not working as expected

Try the following solutions.

- [Solution 1: Scan, enlarge, and then print a copy](#)
- [Solution 2: Wipe the glass and the back of the document lid](#)

Solution 1: Scan, enlarge, and then print a copy

Solution: **Resize to Fit** can only enlarge the original up to the maximum percentage allowed by your model. For example, 200% might be the maximum enlargement percentage allowed by your model. Enlarging a passport photo by 200% might not enlarge it enough for it to fit a full-size page.

If you want to make a large copy of a small original, scan the original into the computer, resize the image in the HP scanning software, and then print a copy of the enlarged image.



NOTE: Do not use the product to copy onto envelopes or other papers it does not support. For more information on recommended media, see [“Recommended papers for printing” on page 10](#).

Cause: You were trying to increase the size of an original that was too small.

If this did not solve the issue, try the next solution.

Solution 2: Wipe the glass and the back of the document lid

Solution: Turn off the product, unplug the power cord, and then use a soft cloth to wipe the glass and the back of the document lid.

Cause: Debris might have been stuck on the glass or on the back of the document lid. The product interprets anything it detects on the glass as part of the image.

Errors

This section contains the following categories of messages about your product:

- [Product messages](#)
- [File messages](#)
- [General user messages](#)
- [Paper messages](#)
- [Ink cartridge and printhead messages](#)

Product messages

The following is a list of product-related error messages:

- [Firmware revision mismatch](#)
- [Memory is full](#)
- [Scanner failure](#)
- [Improper shutdown](#)
- [Missing HP Photosmart Software](#)

Firmware revision mismatch

Solution: Contact HP support for service.

Go to: www.hp.com/support.

If prompted, choose your country/region, and then click **Contact HP** for information on calling for technical support.

Cause: The revision number of the product firmware did not match the revision number of the software.

Memory is full

Solution: Try making fewer copies at a time.

Cause: The document you were copying exceeded the memory of the product.

Scanner failure

Solution: Turn off the product and then turn it on again. Restart your computer and then try to scan again.

If the problem persists, try plugging the power cord directly into a power outlet rather than a surge protector or power strip. If the problem continues, contact HP support. Go to www.hp.com/support. If prompted, choose your country/region, and then click **Contact HP** for information on calling for technical support.

Cause: The product was busy or an unknown cause interrupted your scan.

Improper shutdown

Solution: Press the **On** button to turn the product on and off.

Cause: The last time the product was used, it was not turned off properly. If the product is turned off by turning off the switch on a power strip or by using a wall switch, the product can be damaged.

Missing HP Photosmart Software

Try the following solutions.

- [Solution 1: Install the HP Photosmart Software](#)
- [Solution 2: Check the connection from the product to your computer](#)

Solution 1: Install the HP Photosmart Software

Solution: Install the product software that came with the product. If it is installed, restart your computer.

To install the product software

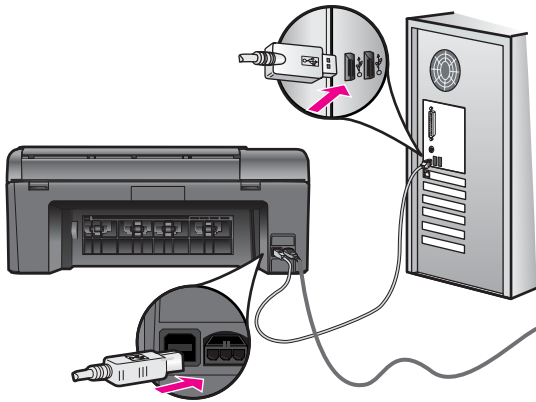
1. Insert the product CD-ROM into your computer's CD-ROM drive and then start the Setup program.
2. When prompted, click **Install More Software** to install the product software.
3. Follow the onscreen instructions and the setup instructions that came with the product.

Cause: The HP Photosmart Software was not installed.

If this did not solve the issue, try the next solution.

Solution 2: Check the connection from the product to your computer

Solution: Check the connection from the product to your computer. Verify that the USB cable is securely plugged into the USB port on the back of the product. Make sure the other end of the USB cable is plugged into a USB port on your computer. After the cable is connected properly, turn off the product and then on again.



For more information on setting up the product and connecting it to your computer, see the setup instructions that came with the product.

Cause: The product was not properly connected to the computer.

File messages

The following is a list of file-related error messages:

- [Error reading or writing the file](#)
- [Unreadable files. NN files could not be read](#)
- [Photos not found](#)

- [File not found](#)
- [Invalid file name](#)
- [Supported file types for the product](#)
- [File corrupted](#)

Error reading or writing the file

Solution: Check to see if you have the right folder and file name.

Cause: The product software could not open or save the file.

Unreadable files. NN files could not be read

Solution: Reinsert the memory card in the product. If this does not work, retake the photos with your digital camera. If you already transferred the files to your computer, try printing those files by using the product software. The copies might not be damaged.

Cause: Some of the files on the inserted memory card or attached storage device were damaged.

Photos not found

Try the following solutions.

- [Solution 1: Reinsert the memory card](#)
- [Solution 2: Print photos from the computer](#)

Solution 1: Reinsert the memory card

Solution: Reinsert the memory card. If this does not work, retake the photos with your digital camera. If you already transferred the files to your computer, try printing those files by using the product software. The copies might not be damaged.

Cause: Some of the files on the inserted memory card or attached storage device were damaged.

If this did not solve the issue, try the next solution.

Solution 2: Print photos from the computer

Solution: Take some photos with your digital camera, or if you previously saved photos on your computer, you can print them using the product software.

Cause: No photos were found on the memory card.

File not found

Solution: Close some applications and try the task again.

Cause: There was not enough available memory on your computer to create a print preview file.

Invalid file name

Solution: Make sure that you are not using any invalid symbols in the file name.

Cause: The file name you entered was invalid.

Supported file types for the product

The product software only recognizes JPG and TIF images.

File corrupted

Try the following solutions.

- [Solution 1: Reinsert the memory card in the product](#)
- [Solution 2: Reformat the memory card in your digital camera.](#)

Solution 1: Reinsert the memory card in the product

Solution: Reinsert the memory card. If this does not work, retake the photos with your digital camera. If you already transferred the files to your computer, try printing those files by using the product software. The copies might not be damaged.

Cause: Some of the files on the inserted memory card or attached storage device were damaged.

If this did not solve the issue, try the next solution.

Solution 2: Reformat the memory card in your digital camera.

Solution: Check the computer screen for an error message telling you that the images on the memory card are corrupted.

If the file system on the card is corrupt, reformat the memory card in your digital camera.

△ **CAUTION:** Reformatting the memory card will delete any photos stored on the card. If you have previously transferred the photos from your memory card to a computer, try printing the photos from the computer. Otherwise, you will need to retake any photos you might have lost.

Cause: The memory card file system was corrupted.

General user messages

The following is a list of messages related to common user errors:

- [Memory card error](#)
- [Cannot crop](#)

- [Out of disk space](#)
- [Card access error](#)
- [Use only one card at a time](#)
- [Card is inserted incorrectly](#)
- [Card is damaged](#)
- [Card is not fully inserted](#)

Memory card error

Try the following solutions to resolve the issue. Solutions are listed in order, with the most likely solution first. If the first solution does not solve the problem, continue trying the remaining solutions until the issue is resolved.

- [Solution 1: Remove all but one memory card](#)
- [Solution 2: Remove the memory card and reinsert it correctly](#)
- [Solution 3: Push the memory card all the way forward](#)

Solution 1: Remove all but one memory card

Solution: Remove all but one memory card. The product reads the remaining memory card and displays the first photo stored on the memory card.

Cause: There were two or more memory cards inserted into the product at the same time.

If this did not solve the issue, try the next solution.

Solution 2: Remove the memory card and reinsert it correctly

Solution: Remove the memory card and reinsert it correctly. The label of the memory card faces up and should be readable as you insert it into the slot.

Cause: You had inserted the memory card backwards or upside down.

If this did not solve the issue, try the next solution.

Solution 3: Push the memory card all the way forward

Solution: Remove the memory card and reinsert it in the memory card slot until it stops.

Cause: You had not fully inserted the memory card.

Cannot crop

Try the following solutions.

- [Solution 1: Close some applications or restart your computer](#)
- [Solution 2: Empty the Recycle Bin on your desktop](#)

Solution 1: Close some applications or restart your computer

Solution: Close all unnecessary applications. This includes applications that run in the background, such as screensavers and virus checkers. (If you turn off your virus checker, remember to turn it back on after you finish.) Try restarting your computer to clear the memory. You might need to purchase more RAM. Refer to the documentation that came with your computer.

Cause: The computer did not have enough memory.

If this did not solve the issue, try the next solution.

Solution 2: Empty the Recycle Bin on your desktop

Solution: Empty the Recycle Bin on your desktop. You might also need to remove files from the hard disk; for example, delete temporary files.

Cause: For scanning, there must be at least 50 MB of space available on your computer's hard disk.

Out of disk space

Solution: Empty the Recycle Bin on your desktop. You might also need to remove files from the hard disk; for example, delete temporary files.

Cause: The computer did not have enough memory.

Card access error

Solution: Remove the memory card and reinsert it in the memory card slot until it stops.

Cause: You had not fully inserted the memory card.

Use only one card at a time

Solution: You can insert only one memory card at a time.

If more than one memory card is inserted, an error message will appear on the display. Remove the additional memory card to resolve the problem.

Cause: There were two or more memory cards inserted into the product at the same time.

Card is inserted incorrectly

Solution: Turn the memory card so that the label faces up and the contacts are facing the product, and then push the card forward into the appropriate slot until the Photo light turns on.

After the memory card has been inserted properly, the Photo light will blink for a few seconds, and then remain lit.

Cause: You had inserted the memory card backwards or upside down.

Card is damaged

Solution: Reformat your memory card in your camera or format your memory card in a computer by selecting the FAT format. For more information, see the documentation that came with your digital camera.

△ **CAUTION:** Reformatting the memory card will delete any photos stored on the card. If you have previously transferred the photos from your memory card to a computer, try printing the photos from the computer. Otherwise, you will need to retake any photos you might have lost.

Cause: You may have formatted the card on a Windows XP computer. By default, Windows XP will format a memory card of 8 MB or less and 64 MB or more with the FAT32 format. Digital cameras and other devices use the FAT (FAT16 or FAT12) format and cannot recognize a FAT32 formatted card.

Card is not fully inserted

Solution: Turn the memory card so that the label faces up and the contacts are facing the product, and then push the card forward into the appropriate slot until the Photo light turns on.

After the memory card has been inserted properly, the Photo light will blink for a few seconds, and then remain lit.

Cause: You had not fully inserted the memory card.

Paper messages

The following is a list of paper-related error messages:

- [Paper upside down](#)
- [Paper orientation error](#)
- [Ink is drying](#)

Paper upside down

Solution: Load paper in the paper tray print side down.

Cause: Paper in the paper tray was upside down.

Paper orientation error

Solution: Insert paper into the paper tray with the short edge forward and the print side down. Slide the paper forward until it stops.

Cause: Paper in the paper tray was in landscape orientation.

Ink is drying

Solution: Leave the sheet in the paper tray until the message disappears. If it is necessary to remove the printed sheet before the message disappears, carefully hold the printed sheet on the underside or the edges, and place it on a flat surface to dry.

Cause: Transparencies and some other media require a drying time that is longer than normal.

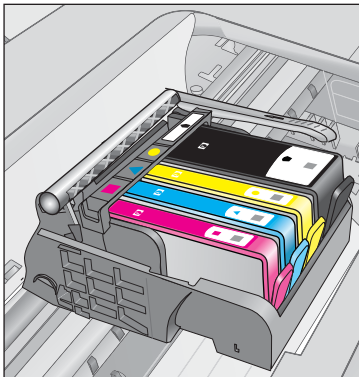
Ink cartridge and printhead messages

The following is a list of printhead and ink cartridge error messages:

- [Cartridges in wrong slot](#)
- [General printer error](#)
- [Incompatible ink cartridges](#)
- [Incompatible printhead](#)
- [Ink alert](#)
- [Ink cartridge problem](#)
- [Ink service capacity warning](#)
- [Ink system failure](#)
- [Check ink cartridges](#)
- [Install cartridges](#)
- [Non-HP cartridge](#)
- [Original HP ink depleted](#)
- [Previously used genuine HP cartridge](#)
- [Printhead problem](#)
- [Problem with printer preparation](#)

Cartridges in wrong slot

Solution: Remove and reinsert the indicated ink cartridges into the correct slots by matching color of cartridges to color and icon for each slot.



Printing cannot occur without one of each type of ink cartridge inserted into the correct slot.

For more information, see:

[“Replace the cartridges” on page 44](#)

Cause: The indicated ink cartridges were inserted into the wrong slots.

General printer error

Try the following solutions.

- [Solution 1: Reset the product](#)
- [Solution 2: Contact HP support](#)

Solution 1: Reset the product

Solution: Turn off the product, and then unplug the power cord. Plug the power cord back in, and then press the **On** button to turn on the product.

Cause: The product experienced an error.

If this did not solve the issue, try the next solution.

Solution 2: Contact HP support

Solution: Write down the error code provided in the message, and then contact HP support. Go to:

www.hp.com/support

If prompted, choose your country/region, and then click **Contact HP** for information on calling for technical support.

Cause: There was a problem with the product.

Incompatible ink cartridges

Try the following solutions.

- [Solution 1: Check to see if the ink cartridges are compatible](#)
- [Solution 2: Contact HP support](#)

Solution 1: Check to see if the ink cartridges are compatible

Solution: Check to make sure you are using the correct ink cartridges for your product. For a list of compatible ink cartridges, see the printed documentation that came with the product.

If you are using ink cartridges that are not compatible with the product, replace the indicated ink cartridges with ink cartridges that are compatible.

△ **CAUTION:** HP recommends that you do not remove an ink cartridge until a replacement is ready to install.

If it appears that you are using the correct ink cartridges, proceed to the next solution.

For more information, see:

- “[Order ink supplies](#)” on page 46
- “[Replace the cartridges](#)” on page 44

Cause: The indicated ink cartridges were not intended for use in this product as it was currently configured.

If this did not solve the issue, try the next solution.

Solution 2: Contact HP support

Solution: Contact HP support for service.

Go to: www.hp.com/support.

If prompted, choose your country/region, and then click **Contact HP** for information on calling for technical support.

Cause: The ink cartridges were not intended for use in this product.

Incompatible printhead

Solution: Contact HP support for service.

Go to: www.hp.com/support.

If prompted, choose your country/region, and then click **Contact HP** for information on calling for technical support.

Cause: The printhead was not intended for use in this product, or it was damaged.

Ink alert

Solution: When you receive an Ink Alert message, you do not need to replace the indicated ink cartridge. However, the amount of ink might be low enough to cause poor print quality. Follow any prompts on the display to continue.

△ **CAUTION:** HP recommends that you do not remove an ink cartridge until a replacement is ready to install.

If you have installed a refilled or remanufactured cartridge, or a cartridge that has been used in another product, the ink level indicator might be inaccurate or unavailable.

Ink level warnings and indicators provide estimates for planning purposes only. When you receive an ink alert message, consider having replacement ink cartridges available to avoid possible printing delays. You do not need to replace the ink cartridges until print quality becomes unacceptable.

For more information, see:

“[Replace the cartridges](#)” on page 44

Cause: The indicated ink cartridges did not have enough ink to print properly.

Ink cartridge problem

Try the following solutions to resolve the issue. Solutions are listed in order, with the most likely solution first. If the first solution does not solve the problem, continue trying the remaining solutions until the issue is resolved.

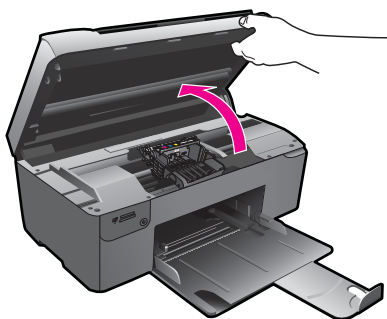
- [Solution 1: Install the ink cartridges correctly](#)
- [Solution 2: Close the print carriage latch](#)
- [Solution 3: Clean the electrical contacts](#)
- [Solution 4: Replace the ink cartridge](#)
- [Solution 5: Contact HP support](#)

Solution 1: Install the ink cartridges correctly

Solution: Make sure all of the ink cartridges are properly installed. Refer to the following steps to resolve this error.

To make sure the ink cartridges are properly installed

1. Make sure the product is turned on.
2. Open the ink cartridge access door by lifting from the front right of the product, until the door locks into place.

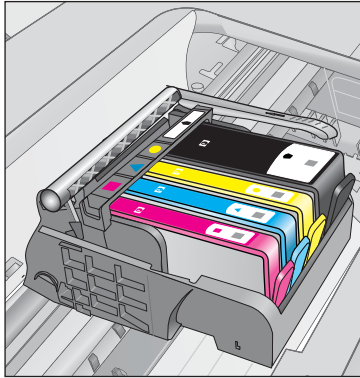


The print carriage moves to the center of the product.

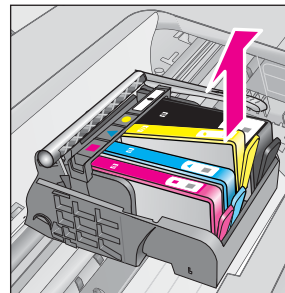
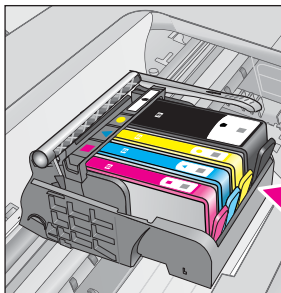


NOTE: Wait until the print carriage stops moving before proceeding.

3. Make sure the ink cartridges are installed in the correct slots.
Match the shape of the icon and color of the ink cartridge with the slot that has the same shaped icon and color.

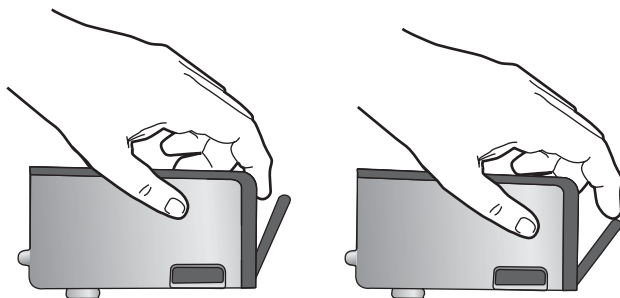


4. Run your finger along the top of the ink cartridges to locate any cartridges that are not snapped completely down.
5. Press down on any cartridges that are sticking up.
They should snap down into place.
6. If an ink cartridge was sticking up and you were able to snap it back down into place, close the ink cartridge access door and check if the error message has gone away.
 - If the message has gone away, stop troubleshooting here. The error has been resolved.
 - If the message has not gone away, proceed to the next step.
 - If none of the ink cartridges were sticking up, proceed to the next step.
7. Locate the ink cartridge that is indicated in the error message, and then press the tab on the ink cartridge to release it from the slot.

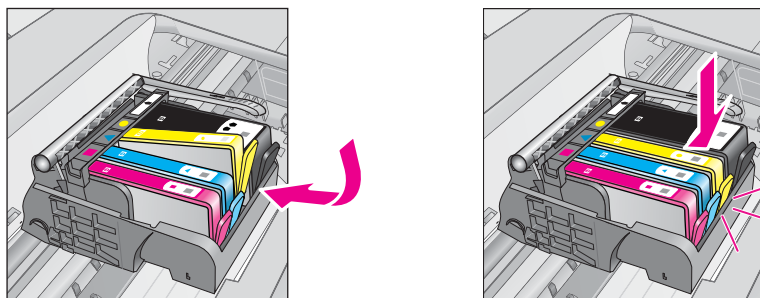


8. Press the ink cartridge back down into place.
The tab should make a snapping noise when the ink cartridge is correctly seated. If the ink cartridge did not make a snapping noise, the tab might need to be readjusted.
9. Remove the ink cartridge from the slot.
10. Gently bend the tab away from the ink cartridge.

△ **CAUTION:** Be careful not to bend the tab out more than about 1.27 cm (0.5 inches).



11. Reinstall the ink cartridge.
It should now snap down into place.



12. Close the ink cartridge access door, and check if the error message has gone away.
13. If you still receive the error message, turn the product off, and then on again.

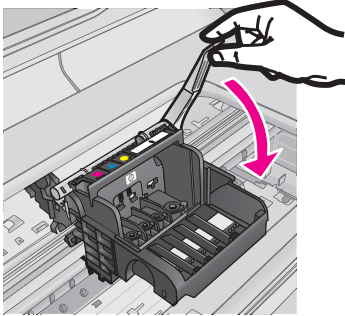
Cause: The indicated ink cartridges were not installed correctly.

If this did not solve the issue, try the next solution.

Solution 2: Close the print carriage latch

Solution: Lift the latch handle and carefully lower it to make sure that the latch securing the printhead is securely closed. Leaving the latch handle raised can result

in incorrectly seated ink cartridges and problems printing. The latch must remain down in order to correctly install the ink cartridges.



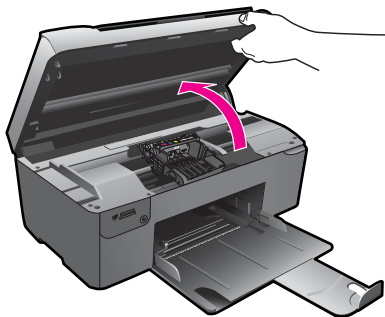
Cause: The print carriage latch was not closed properly.
If this did not solve the issue, try the next solution.

Solution 3: Clean the electrical contacts

Solution: Clean the cartridge electrical contacts.

To clean the electrical contacts

1. Make sure the product is turned on.
2. Open the cartridge access door by lifting the blue access handles on the side of the product, until the door locks into place.

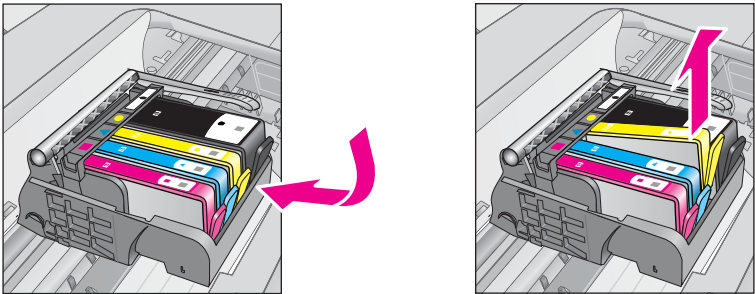


The print carriage moves to the center of the product.

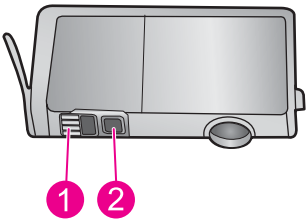


NOTE: Wait until the print carriage stops moving before proceeding.

3. Locate the ink cartridge that is indicated in the error message, and then press the tab on the ink cartridge to release it from the slot.

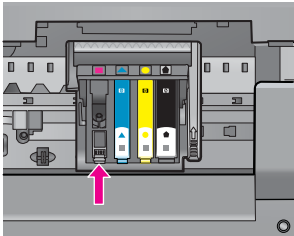


4. Hold the ink cartridge by its sides with the bottom pointing up and locate the electrical contacts on the ink cartridge. The electrical contacts are four small rectangles of copper or gold-colored metal on the bottom of the ink cartridge.



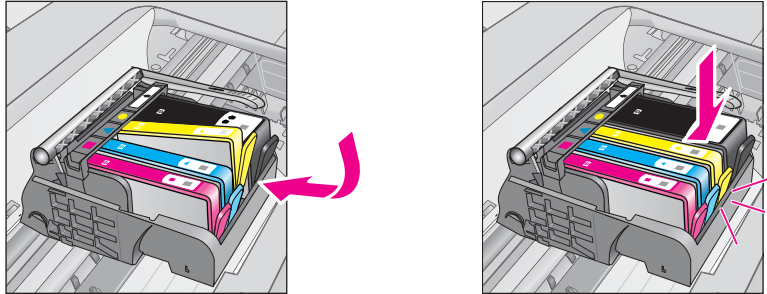
1	Ink window
2	Electrical contacts

5. Wipe the contacts with a dry swab or lint-free cloth.
6. On the inside of the product, locate the contacts in the printhead. The contacts look like a set of four copper or gold-colored pins positioned to meet the contacts on the ink cartridge.



7. Use a dry swab or lint-free cloth to wipe the contacts.

8. Reinstall the ink cartridge.



9. Close the ink cartridge door, and check if the error message has gone away.

10. If you still receive the error message, turn the product off, and then on again.

If you still receive this message after cleaning the cartridge contacts, you might have a damaged cartridge.

Check to see if your cartridge is still under warranty and the end of warranty date has not been reached.

- If the end of warranty date has been reached, purchase a new ink cartridge.
- If the end of warranty date has not been reached, contact HP support for service or replacement.

Go to: www.hp.com/support.

If prompted, choose your country/region, and then click **Contact HP** for information on calling for technical support.

For more information, see:

- “[Cartridge warranty information](#)” on page 46
- “[Replace the cartridges](#)” on page 44

Cause: The electrical contacts needed to be cleaned.

If this did not solve the issue, try the next solution.

Solution 4: Replace the ink cartridge

Solution: Replace the indicated ink cartridge.

If your cartridge is still under warranty, contact HP support for service or replacement.

Go to: www.hp.com/support.

If prompted, choose your country/region, and then click **Contact HP** for information on calling for technical support.

For more information, see:

“[Cartridge warranty information](#)” on page 46

Cause: The indicated ink cartridges were defective.

If this did not solve the issue, try the next solution.

Solution 5: Contact HP support

Solution: Contact HP support for service.

Go to: www.hp.com/support.

If prompted, choose your country/region, and then click **Contact HP** for information on calling for technical support.

Cause: The product had a problem.

Ink service capacity warning

Solution: If you are going to move or transport the product after receiving this message, make sure you keep it upright and do not tip it on its side to avoid ink leakage.

Printing can continue, but ink system behavior might change.

Cause: The product has nearly maximized the ink service capacity.

Ink system failure

Solution: Turn off the product, unplug the power cord, and wait 10 seconds. Then, plug the power cord back in and turn on the product.

If you continue to receive this message, write down the error code provided in the message on the product display, and then contact HP support. Go to:

www.hp.com/support

If prompted, choose your country/region, and then click **Contact HP** for information on calling for technical support.

Cause: The printhead or the ink delivery system failed and the product can no longer print.

Check ink cartridges

Try the following solutions to resolve the issue. Solutions are listed in order, with the most likely solution first. If the first solution does not solve the problem, continue trying the remaining solutions until the issue is resolved.

- [Solution 1: Install all four ink cartridges](#)
- [Solution 2: Make sure the ink cartridges are installed correctly](#)
- [Solution 3: Contact HP support](#)

Solution 1: Install all four ink cartridges

Solution: Make sure all of the ink cartridges are inserted.

For more information, see:

[“Replace the cartridges” on page 44](#)

Cause: One or more of the ink cartridges were not installed.

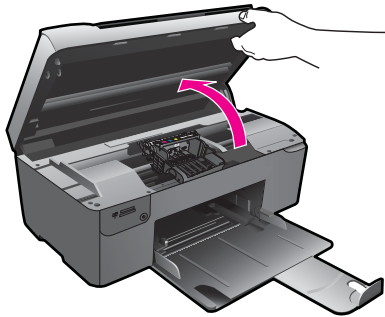
If this did not solve the issue, try the next solution.

Solution 2: Make sure the ink cartridges are installed correctly

Solution: Make sure all of the ink cartridges are properly installed. Refer to the following steps to resolve this error.

To make sure the ink cartridges are properly installed

1. Make sure the product is turned on.
2. Open the ink cartridge access door by lifting from the front right of the product, until the door locks into place.

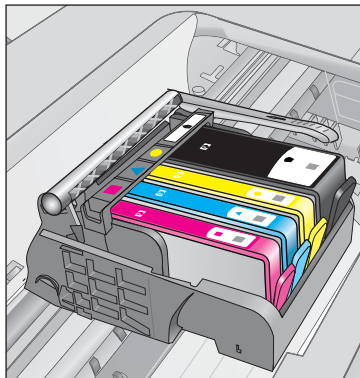


The print carriage moves to the center of the product.

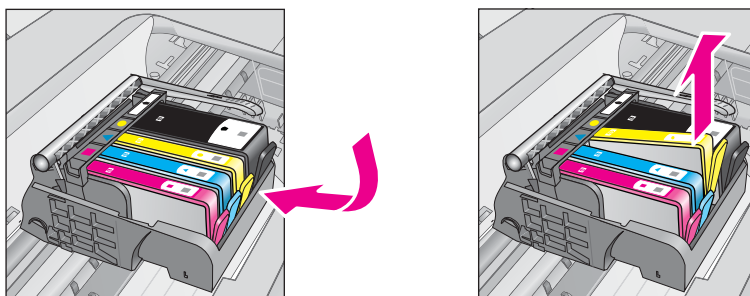


NOTE: Wait until the print carriage stops moving before proceeding.

3. Make sure the ink cartridges are installed in the correct slots.
Match the shape of the icon and color of the ink cartridge with the slot that has the same shaped icon and color.

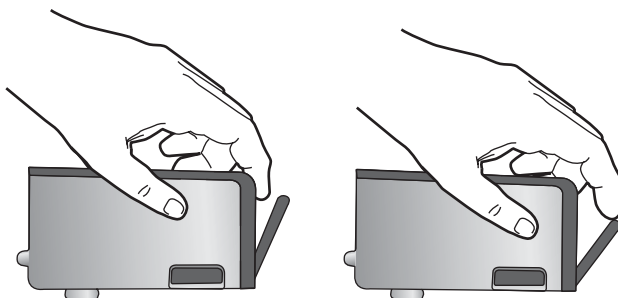


4. Run your finger along the top of the ink cartridges to locate any cartridges that are not snapped completely down.
5. Press down on any cartridges that are sticking up. They should snap down into place.
6. If an ink cartridge was sticking up and you were able to snap it back down into place, close the ink cartridge access door and check if the error message has gone away.
 - If the message has gone away, stop troubleshooting here. The error has been resolved.
 - If the message has not gone away, proceed to the next step.
 - If none of the ink cartridges were sticking up, proceed to the next step.
7. Locate the ink cartridge that is indicated in the error message, and then press the tab on the ink cartridge to release it from the slot.

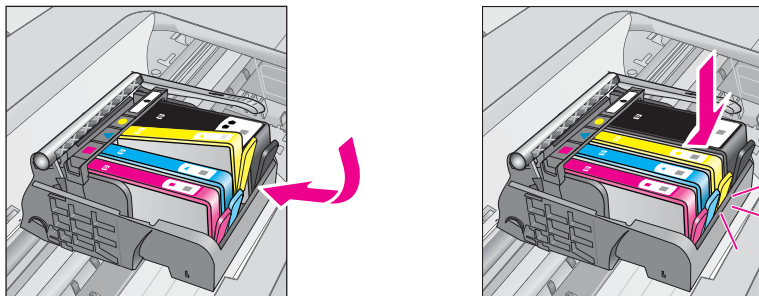


8. Press the ink cartridge back down into place. The tab should make a snapping noise when the ink cartridge is correctly seated. If the ink cartridge did not make a snapping noise, the tab might need to be readjusted.
9. Remove the ink cartridge from the slot.
10. Gently bend the tab away from the ink cartridge.

△ **CAUTION:** Be careful not to bend the tab out more than about 1.27 cm (0.5 inches).



11. Reinstall the ink cartridge.
It should now snap down into place.



12. Close the ink cartridge access door, and check if the error message has gone away.
13. If you still receive the error message, turn the product off, and then on again.
- Cause:** The ink cartridges were not installed properly.
- If this did not solve the issue, try the next solution.

Solution 3: Contact HP support

Solution: Contact HP support for service.

Go to: www.hp.com/support.

If prompted, choose your country/region, and then click **Contact HP** for information on calling for technical support.

Cause: There was a problem with the ink cartridges.

Install cartridges

Solution: Make sure all of the ink cartridges are inserted.

For more information, see:

[“Replace the cartridges” on page 44](#)

Cause: One or more of the ink cartridges were not installed.


If this did not solve the issue, try the next solution.

Non-HP cartridge

Solution: Follow the prompts on the display to continue, or replace the indicated ink cartridges.

△ **CAUTION:** HP recommends that you do not remove an ink cartridge until a replacement is ready to install.

HP recommends that you use genuine HP ink cartridges. Genuine HP ink cartridges are designed and tested with HP printers to help you easily produce great results, time after time.

 **NOTE:** HP cannot guarantee the quality or reliability of non-HP supplies. Printer service or repairs required as a result of using a non-HP supply will not be covered under warranty.

If you believe you purchased genuine HP ink cartridges, go to:

www.hp.com/go/anticounterfeit

For more information, see:

[“Replace the cartridges” on page 44](#)


Cause: The product detected non-HP ink.

Original HP ink depleted


Solution: Follow the prompts on the display to continue, or replace the indicated ink cartridges.

Check the print quality of the current print job. If it is not satisfactory, try cleaning the printhead to see if that improves the quality.

Information about ink levels will not be available.

 **CAUTION:** HP recommends that you do not remove an ink cartridge until a replacement is ready to install.

HP recommends that you use genuine HP ink cartridges. Genuine HP ink cartridges are designed and tested with HP printers to help you easily produce great results, time after time.

 **NOTE:** HP cannot guarantee the quality or reliability of non-HP supplies. Printer service or repairs required as a result of using a non-HP supply will not be covered under warranty.

If you believe you purchased genuine HP ink cartridges, go to:

www.hp.com/go/anticounterfeit

For more information, see:

[“Replace the cartridges” on page 44](#)

Cause: The original HP ink in the indicated ink cartridges was depleted.

Previously used genuine HP cartridge

Solution: Check the print quality of the current print job. If it is not satisfactory, try cleaning the printhead to see if that improves the quality.

To clean the printhead from the HP Photosmart Software

1. Load letter, A4, or legal unused plain white paper into the paper tray.
2. In the HP Solution Center, click **Settings**.
3. In the **Print Settings** area, click **Printer Toolbox**.



NOTE: You can also open the **Printer Toolbox** from the **Print Properties** dialog box. In the **Print Properties** dialog box, click the **Features** tab, and then click **Printer Services**.

The **Printer Toolbox** appears.

4. Click the **Device Services** tab.
5. Click **Clean the printhead**.
6. Follow the prompts until you are satisfied with the quality of the output, and then click **Done**.

There are two stages of cleaning. Each stage lasts about two minutes, uses one sheet of paper, and uses an increasing amount of ink. After each stage, review the quality of the printed page. You should only initiate the next phase of cleaning if the print quality is poor.

If print quality still seems poor after you complete both stages of cleaning, try aligning the printer. If print quality problems persist after cleaning and aligning, contact HP support.

Follow the prompts on the display or computer screen to continue.



NOTE: HP recommends that you do not leave the ink cartridge outside of the printer for an extended period of time. If a used cartridge is installed, check the print quality. If it is not satisfactory, run the cleaning procedure from the toolbox.

Cause: The genuine HP ink cartridge was previously used in some other product.

Printhead problem

Try the following solutions.

- [Solution 1: Reinstall the printhead](#)
- [Solution 2: Contact HP support](#)

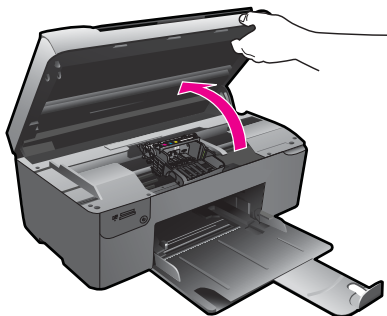
Solution 1: Reinstall the printhead

Solution: Check to make sure the printhead is installed and the ink cartridge access door is closed.

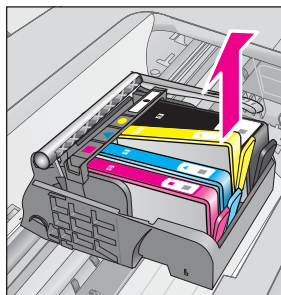
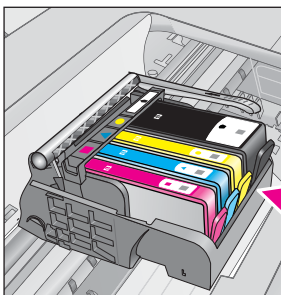
Reinstall the printhead.

To reinstall the printhead

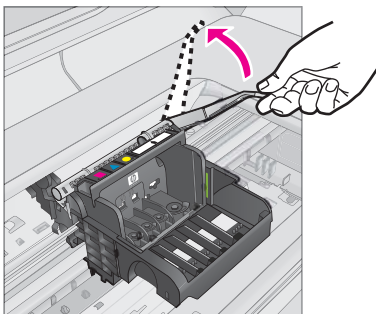
1. Make sure that the product is turned on.
2. Open the ink cartridge door.



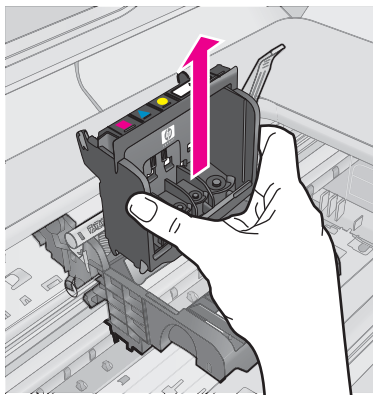
3. Remove all of the ink cartridges and place them on a piece of paper with the ink opening pointing up.



4. Lift the latch handle on the print carriage until it stops.

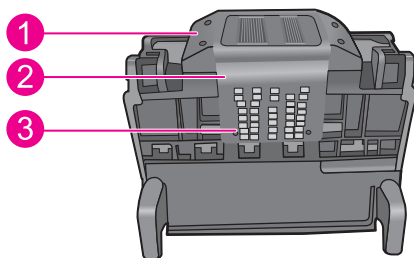


5. Remove the printhead by lifting it straight up.



6. Clean the printhead.

There are three areas of the printhead that need to be cleaned: the plastic ramps on both sides of the ink nozzles, the edge between the nozzles and the electrical contacts, and the electrical contacts.

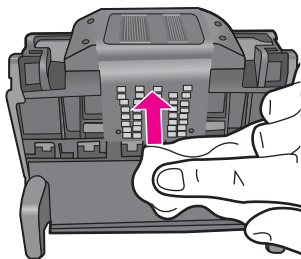


1	Plastic ramps on the sides of the nozzles
2	Edge between nozzles and contacts
3	Electrical contacts

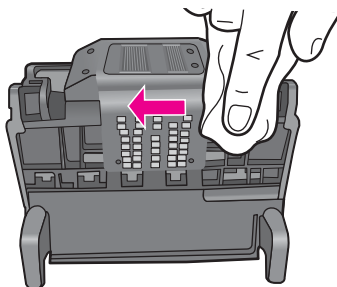
△ **CAUTION:** Touch the nozzle and the electrical contact areas **only** with cleaning materials and not with your finger.

To clean the printhead

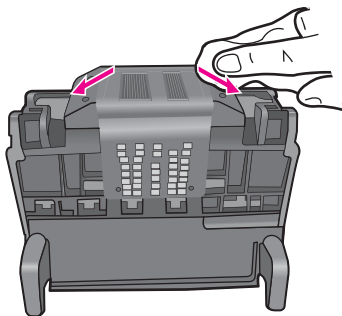
- a. Lightly dampen a clean, lint-free cloth and wipe the electrical contact area from the bottom to the top. Do not go past the edge between the nozzles and the electrical contacts. Clean until no new ink shows on the cloth.



- b. Use a fresh, lightly dampened, lint-free cloth to wipe any accumulated ink and debris from the edge between the nozzles and the contacts.



- c. Use a fresh, lightly dampened, lint-free cloth to wipe the plastic ramps on both sides of the nozzles. Wipe away from the nozzles.

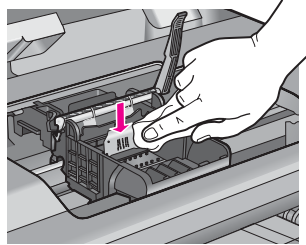


- d. Wipe the previously cleaned areas dry with a dry lint-free cloth before proceeding to the next step.

7. Clean the electrical contacts inside the product.

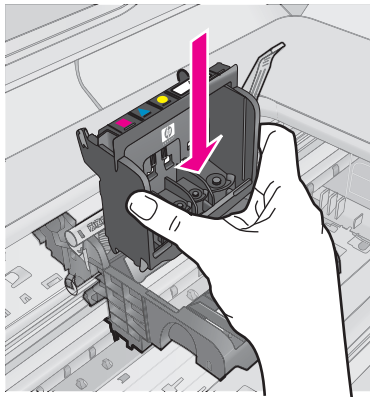
To clean the electrical contacts in the product

- a. Lightly dampen a clean, lint-free cloth with bottled or distilled water.
- b. Clean the electrical contacts in the product by wiping with the cloth from top to bottom. Use as many fresh, clean cloths as necessary. Clean until no ink shows on the cloth.



- c. Wipe the area dry with a dry lint-free cloth before proceeding to the next step.

8. Make sure the latch handle is raised, and then reinsert the printhead.

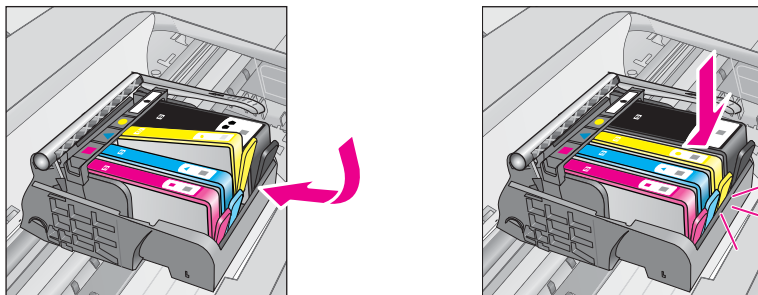


9. Carefully lower the latch handle.

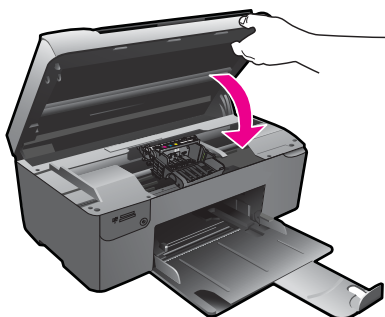


NOTE: Make sure you lower the latch handle before reinserting the ink cartridges. Leaving the latch handle raised can result in incorrectly seated ink cartridges and problems printing. The latch must remain down in order to correctly install the ink cartridges.

- 10.** Using the colored shaped icons for help, slide the ink cartridge into the empty slot until it clicks into place and is seated firmly in the slot.



- 11.** Close the ink cartridge door.



Cause: There was a problem with the printhead.

If this did not solve the issue, try the next solution.

Solution 2: Contact HP support

Solution: Contact HP support for service.

Go to: www.hp.com/support.

If prompted, choose your country/region, and then click **Contact HP** for information on calling for technical support.

Cause: There was a problem with the printhead.

Problem with printer preparation

Solution: Check the print quality of the current print job. If it is not satisfactory, it could mean the internal clock failed and the product was not able to service the printhead as scheduled. Try cleaning the printhead to see if that improves the quality.

To clean the printhead from the HP Photosmart Software

1. Load letter, A4, or legal unused plain white paper into the paper tray.
2. In the HP Solution Center, click **Settings**.
3. In the **Print Settings** area, click **Printer Toolbox**.



NOTE: You can also open the **Printer Toolbox** from the **Print Properties** dialog box. In the **Print Properties** dialog box, click the **Features** tab, and then click **Printer Services**.

The **Printer Toolbox** appears.

4. Click the **Device Services** tab.
5. Click **Clean the printhead**.
6. Follow the prompts until you are satisfied with the quality of the output, and then click **Done**.

There are two stages of cleaning. Each stage lasts about two minutes, uses one sheet of paper, and uses an increasing amount of ink. After each stage, review the quality of the printed page. You should only initiate the next phase of cleaning if the print quality is poor.

If print quality still seems poor after you complete both stages of cleaning, try aligning the printer. If print quality problems persist after cleaning and aligning, contact HP support.

Cause: The product was turned off improperly.

12 Stop the current job

To stop a current job from the product

- ▲ Press **Cancel** on the control panel. If the current job does not stop, press **Cancel** again.

It can take a few moments for the current job to be cancelled.

13 Technical information

The technical specifications and international regulatory information for the HP Photosmart are provided in this section.

For additional specifications, see the printed documentation that came with the HP Photosmart.

This section contains the following topics:

- [Notice](#)
- [Cartridge chip information](#)
- [Specifications](#)
- [Environmental product stewardship program](#)
- [Regulatory notices](#)

Notice

Hewlett-Packard Company notices

The information contained in this document is subject to change without notice.

All rights reserved. Reproduction, adaptation, or translation of this material is prohibited without prior written permission of Hewlett-Packard, except as allowed under copyright laws. The only warranties for HP products and services are set forth in the express warranty statements accompanying such products and services. Nothing herein should be construed as constituting an additional warranty. HP shall not be liable for technical or editorial errors or omissions contained herein.

© 2009 Hewlett-Packard Development Company, L.P.

Windows, Windows 2000, and Windows XP are U.S. registered trademarks of Microsoft Corporation.

Windows Vista is either a registered trademark or trademark of Microsoft Corporation in the United States and/or other countries.

Intel and Pentium are trademarks or registered trademarks of Intel Corporation or its subsidiaries in the United States and other countries.

Cartridge chip information

The HP cartridges used with this product contain a memory chip that assists in the operation of the product. In addition, this memory chip collects a limited set of information about the usage of the product, which might include the following: the date when the cartridge was first installed, the date when the cartridge was last used, the number of pages printed using the cartridge, the page coverage, the printing modes used, any printing errors that might have occurred, and the product model. This information helps HP design future products to meet our customers printing needs.

The data collected from the cartridge memory chip does not contain information that can be used to identify a customer or user of the cartridge or their product.

HP collects a sampling of the memory chips from cartridges returned to HP's free return and recycling program (HP Planet Partners: www.hp.com/hpinfo/globalcitizenship/environment/recycle/). The memory chips from this sampling are read and studied in order to improve future HP products. HP partners who assist in recycling this cartridge might have access to this data, as well.


Any third party possessing the cartridge might have access to the anonymous information on the memory chip. If you prefer to not allow access to this information, you can render the chip inoperable. However, after you render the memory chip inoperable, the cartridge cannot be used in an HP product.


If you are concerned about providing this anonymous information, you can make this information inaccessible by turning off the memory chip's ability to collect the product's usage information.

To disable the usage information function

1. Press the button next to **Copy** on the Home screen.
The **Copy Menu** appears.
2. Press the top-right, middle-left, and bottom-left buttons in sequence.

- 3. Press the button next to **Acumen Opt-Out**.
- 4. Press **OK**.

 **NOTE:** To re-enable the usage information function, restore the factory defaults.

 **NOTE:** You can continue to use the cartridge in the HP product if you turn off the memory chip's ability to collect the product's usage information.

Specifications

Technical specifications for the HP Photosmart are provided in this section. For complete product specifications, see the Product Data Sheet at www.hp.com/support.

System requirements

Software and system requirements are located in the Readme file.
For information about future operating system releases and support, visit the HP online support Web site at www.hp.com/support.


Environmental specifications

- Recommended operating temperature range: 15 °C to 32 °C (59 °F to 90 °F)
- Allowable operating temperature range: 5 °C to 40 °C (41 °F to 104 °F)
- Humidity: 20% to 80% RH non-condensing (recommended); 25 °C maximum dewpoint
- Non-operating (Storage) temperature range: -40 °C to 60 °C (-40 °F to 140 °F)
- In the presence of high electromagnetic fields, it is possible the output from the HP Photosmart may be slightly distorted
- HP recommends using a USB cable less than or equal to 3 m (10 feet) in length to minimize injected noise due to potential high electromagnetic fields

Paper specifications

Type	Paper weight	Paper tray*
Plain paper	Up to 20 lb. (up to 75 gsm)	Up to 125 (20 lb. paper)
Legal paper	Up to 20 lb. (up to 75 gsm)	Up to 125 (20 lb. paper)
Index cards	110 lb. index max (200 gsm)	Up to 40
Hagaki cards	110 lb. index max (200 gsm)	Up to 40
Envelopes	20 to 24 lb. (75 to 90 gsm)	Up to 15
5 x 7 inch (13 x 18 cm) Photo paper	145 lb. (236 gsm)	Up to 40
4 x 6 inch (10 x 15 cm) Photo paper	145 lb. (236 gsm)	Up to 40
8.5 x 11 inch (216 x 279 mm) Photo paper	145 lb. (236 gsm)	Up to 40

* Maximum capacity.

 **NOTE:** For a complete list of supported media sizes, see the printer driver.

Print specifications

- Print speeds vary according to the complexity of the document
- Panorama-size printing
- Method: drop-on-demand thermal inkjet
- Language: PCL3 GUI

Scan specifications

- Image editor included
- Twain-compliant software interface
- Resolution: up to 1200 x 2400 ppi optical; 19200 ppi enhanced (software)
For more information about ppi resolution, see the scanner software.
- Color: 48-bit color, 8-bit grayscale (256 levels of gray)
- Maximum scan size from glass: 21.6 x 29.7 cm (8.5 x 11.7 inches)

Copy specifications

- Digital image processing
- Maximum number of copies varies by model
- Copy speeds vary according to the complexity of the document and model
- Maximum copy enlargement ranging from 200-400% (depends on model)
- Maximum copy reduction ranging from 25-50% (depends on model)

Print resolution

To find out about the printer resolution, see the printer software. For more information, see "[View the print resolution](#)" on page 25.

Cartridge yield

Visit www.hp.com/go/learnaboutsupplies for more information on estimated cartridge yields.

Environmental product stewardship program

Hewlett-Packard is committed to providing quality products in an environmentally sound manner. Design for recycling has been incorporated into this product. The number of materials has been kept to a minimum while ensuring proper functionality and reliability. Dissimilar materials have been designed to separate easily. Fasteners and other connections are easy to locate, access, and remove using common tools. High priority parts have been designed to access quickly for efficient disassembly and repair.

For more information, visit HP's Commitment to the Environment Web site at:

www.hp.com/hpinfo/globalcitizenship/environment/index.html

This section contains the following topics:

- [Eco-Tips](#)
- [Paper use](#)
- [Plastics](#)
- [Material safety data sheets](#)
- [Recycling program](#)
- [HP inkjet supplies recycling program](#)
- [Power consumption](#)
- [Disposal of waste equipment by users in private households in the European Union](#)
- [Chemical Substances](#)
- [Toxic and hazardous substance table](#)
- [Battery disposal in the Netherlands](#)
- [Battery disposal in Taiwan](#)

- [Attention California users](#)
- [EU battery directive](#)

Eco-Tips

HP is committed to helping customers reduce their environmental footprint. HP has provided the Eco-Tips below to help you focus on ways to assess and reduce the impact of your printing choices. In addition to specific features in this product, please visit the HP Eco Solutions web site for more information on HP's environmental initiatives.

www.hp.com/hpinfo/globalcitizenship/environment/

Your product's Eco features

- **Smart Web printing:** The HP Smart Web Printing interface includes a **Clip Book** and **Edit Clips** window where you can store, organize, or print clips you have gathered from the Web. For more information, see "[Print a Web page](#)" on page 24.
- **Energy Savings information:** To determine the ENERGY STAR® qualification status for this product, see "[Power consumption](#)" on page 102.
- **Recycled Materials:** For more information regarding recycling of HP products, please visit: www.hp.com/hpinfo/globalcitizenship/environment/recycle/

Paper use

This product is suited for the use of recycled paper according to DIN 19309 and EN 12281:2002.

Plastics

Plastic parts over 25 grams are marked according to international standards that enhance the ability to identify plastics for recycling purposes at the end of product life.

Material safety data sheets

Material safety data sheets (MSDS) can be obtained from the HP Web site at:

www.hp.com/go/msds

Recycling program

HP offers an increasing number of product return and recycling programs in many countries/regions, and partners with some of the largest electronic recycling centers throughout the world. HP conserves resources by reselling some of its most popular products. For more information regarding recycling of HP products, please visit:

www.hp.com/hpinfo/globalcitizenship/environment/recycle/

HP inkjet supplies recycling program

HP is committed to protecting the environment. The HP Inkjet Supplies Recycling Program is available in many countries/regions, and lets you recycle used print cartridges and ink cartridges free of charge. For more information, go to the following Web site:

www.hp.com/hpinfo/globalcitizenship/environment/recycle/

Power consumption

Power usage drops significantly while in Sleep mode, which saves natural resources and saves money without affecting the high performance of this product. To determine the ENERGY STAR® qualification status for this product see the Product Data Sheet or Specifications Sheet. Qualified products are also listed at www.hp.com/go/energystar.

Disposal of waste equipment by users in private households in the European Union



Disposal of Waste Equipment by Users in Private Households in the European Union

This symbol on the product or on its packaging indicates that this product must not be disposed of with your other household waste. Instead, it is your responsibility to dispose of your waste equipment by handing it over to a designated collection point for the recycling of waste electrical and electronic equipment. The separate collection and recycling of your waste equipment at the time of disposal will help to conserve natural resources and ensure that it is recycled in a manner that protects human health and the environment. For more information about where you can drop off your waste equipment for recycling, please contact your local city office, your household waste disposal service or the shop where you purchased the product.

Évacsion des équipements usagés par les utilisateurs dans les foyers privés ou sein de l'Union européenne

La présence de ce symbole sur le produit ou sur son emballage indique que vous ne pouvez pas vous débarrasser de ce produit de la même façon que des déchets courants. Au contraire, vous êtes responsable de l'évacuation de vos équipements usagés et, à cet effet, vous êtes tenu de le remettre à un point de collecte agréé pour le recyclage des équipements électriques et électroniques usagés. La séparation et le recyclage de vos équipements usagés permettent de préserver les ressources naturelles et de s'assurer que ces équipements sont recyclés dans le respect de la santé humaine et de l'environnement. Pour plus d'informations sur les lieux de collecte des équipements usagés, veuillez contacter votre mairie, votre service de traitement des déchets ménagers ou le magasin où vous avez acheté le produit.

Entsorgung von Elektrogeräten durch Benutzer in privaten Haushalten in der EU

Dieses Symbol auf dem Produkt oder dessen Verpackung gibt an, dass das Produkt nicht zusammen mit dem Restmüll entsorgt werden darf. Es obliegt daher Ihrer Verantwortung, das Gerät an einer entsprechenden Stelle für die Entsorgung oder Wiederverwertung von Elektrogeräten aller Art abzugeben (z.B. ein Wertstoffhof). Die separate Sammlung und das Recycling Ihrer alten Elektrogeräte zum Zeitpunkt ihrer Entsorgung trägt zum Schutz der Umwelt bei und gewährleistet, dass sie auf eine Art und Weise recycelt werden, die keine Gefährdung für die Gesundheit des Menschen und der Umwelt darstellt. Weitere Informationen darüber, wo Sie alte Elektrogeräte zum Recyceln abgeben können, erhalten Sie bei den örtlichen Behörden, Wertstoffhöfen oder dort, wo Sie das Gerät erworben haben.

Smaltimento di apparecchiature da rottamare da parte di privati nell'Unione Europea

Questo simbolo che appare sul prodotto o sulla confezione indica che il prodotto non deve essere smaltito assieme agli altri rifiuti domestici. Gli utenti devono provvedere allo smaltimento delle apparecchiature da rottamare portandole al luogo di raccolta indicato per il riciclaggio delle apparecchiature elettriche ed elettroniche. La raccolta e il riciclaggio separati delle apparecchiature da rottamare in fase di smaltimento favoriscono la conservazione delle risorse naturali e garantiscono che tali apparecchiature vengano rottamate nel rispetto dell'ambiente e della tutela della salute. Per ulteriori informazioni sui punti di raccolta delle apparecchiature da rottamare, contattare il proprio comune di residenza, il servizio di smaltimento dei rifiuti locale o il negozio presso il quale è stato acquistato il prodotto.

Eliminación de residuos de aparatos eléctricos y electrónicos por parte de usuarios domésticos en la Unión Europea

Este símbolo en el producto o en el empaque indica que no se puede desechos el producto junto con los residuos domésticos. Por el contrario, si debe eliminar este tipo de residuos, es responsabilidad del usuario entregarlos en un punto de recogida designado de residuos de aparatos eléctricos y electrónicos. El reciclaje y la recogida por separado de estos residuos en el momento de la eliminación ayudan a preservar recursos naturales y a garantizar que el reciclaje proteja la salud y el medio ambiente. Si desea información adicional sobre los lugares donde puede dejar estos residuos para su reciclado, póngase en contacto con las autoridades locales de su ciudad, con el servicio de gestión de residuos domésticos o con la tienda donde adquirió el producto.

Likvidace vyloučeného zařízení užívatelů v domácnostech v zemích EU

Toto značka na produktu nebo na jeho obalu označuje, že tento produkt nesmí být likvidován společným vyhozením do běžného domovního odpadu. Odpovědné za to, že vyloučené zařízení bude předáno k likvidaci v souladu s předpisy, které stanoví, že recyklace vyloučených elektrických a elektronických zařízení, likvidace vyloučeného zařízení samostatným způsobem a likvidace odpadů zachování přírodních zdrojů a zajištění, že recyklace proběhne způsobem chránícím lidské zdraví a životní prostředí. Další informace o tom, kam můžete vyloučené zařízení předat k recyklaci, můžete získat od úřadů místní samosprávy, od společnosti poskytující zprav o likvidaci domovního odpadu nebo v obchodě, kde jste produkt zakoupili.

Bortskaffelse af affaldsudyd for brugere i private husholdninger i EU

Dette symbol på produktet eller på dets emballage indikerer, at produktet ikke må bortskaffes sammen med andet husholdningsaffald. I stedet er det ansvar at bortskaffe affaldsudyd ved at afleverer det på et dedikeret sted beregnet til indsamling af elektrisk og elektronisk affald. Den separate indsamling og genbrug af dit affaldsudyd på tidspunktet for bortskaffelse er med til at bevare naturlige ressourcer og sikre, at genbrug finder sted på en måde, der beskytter menneskers helbreds miljøer. Hvis du vil vide mere om, hvor du kan aflevere dit affaldsudyd til genbrug, kan du kontakte myndighederne eller den forretning, hvor du købte produktet.

Avoer van afgedankte apparatuur door gebruikers in particuliere huishoudens in de Europese Unie

Dit symbool op het product of de verpakking geeft aan dat dit product niet mag worden afgevoerd met het huishoudelijk afval. Het is uw verantwoordelijkheid uw afgedankte apparatuur of de leverer op een aangewezen inzamelpunt voor de verwerking van afgedankte elektrische en elektronische apparatuur. De gescheiden inzameling en verwerking van uw afgedankte apparatuur draagt bij tot het sparen van natuurlijke bronnen en tot het behoud van het materiaal op een wijze die de volgebruikzaamheid en het milieu beschermt. Voor meer informatie over waar u uw afgedankte apparatuur kunt inleveren voor recycling kunt u contact opnemen met het gemeentebestuur in uw woonplaats, de reinigingsdienst of de winkel waar u het product hebt aangekocht.

Erasmopidomistades kasutuseel kõrvaldamiseks seadmete käitlemine Euroopa Liidus

Täna kaheksa on see sümbol, et iga isik peab loobuma vana elektriseadme hülja. Teie lohus on viia tarbeks muutunud seade selleks ettenähtud elektrilise ja elektronikaseadmete ühistöötluskeskustesse. Ühistöötlusvõtte seadmete eraldi kogumise ja käitlemise alusel sõltab loomadevaranduse ning tervise, et käitlemine toimub inimtöö teavitel ja keskkonnale ohult. Loostest selle kätte, kuhu saate ühistöötluse seadme käitlemiseks viia, saate küsida kohalikul omavalitsusel, ometöötluskeskustel või kauplustel, kust te seadme ostsite.

Häivettävien laitteiden käittelyt kotitalouksien Euroopan unionin alueella

Tämä kaheksa on se symboli, joka tarkoittaa, että jokainen käyttäjä on velvollinen luovuttamaan vanhaa sähköistä ja elektronista laitteistoa erillisenä jätteenä. Käyttäjien velvollisuus on huolehtia siitä, että häivettävät laitteet toimittetaan sähkö- ja elektronikalaitteiden keräyspisteeseen. Häivettävien laitteiden erillinen keräys ja käsittely säästää luonnonvaroja. Näin toimittaminen varmistetaan myös, että käsittely tapahtuu tavalla, joka suojaa ihmisten terveyttä ja ympäristöä. Saat lisätietoja lähimmäisestä keräyspaikasta paikallisella viranomaisella, jähvittävien laitteiden toimittamiseen.

Ανέγερση άχρηστων συσκευών στην Ευρωπαϊκή Ένωση

Το παρόν σύμβολο στον εξοπλισμό ή τη συσκευασία του υποδηλώνει ότι ο προϊόν αυτό δεν πρέπει να πεταχτεί μαζί με άλλα οικιακά απορρίμματα. Αντίθετα, εφόσον σας είναι να απορρίψετε τις άχρηστες συσκευές, δε μπορείτε να τις απορρίψετε στον κοινό απορριμματοφύλακα. Η διακριτική διαχείριση των άχρηστων συσκευών, η διασφάλιση ότι η διασφάλιση ότι τα ανακυκλωθέντα μη είναι πρώτων, ώστε να προστατευτεί η υγεία των ανθρώπων και το περιβάλλον. Για περισσότερες πληροφορίες σχετικά με το πού μπορείτε να απορρίψετε τις άχρηστες συσκευές για ανακύκλωση, επικοινωνήστε με τις κατά τόπους αρχές, αρμόδιες ή με το κατάστημα από το οποίο αγοράσατε τον προϊόν.

A hulladékoknak megkezelése a megújulóenergiaforrásokban az Európai Unióban

Ez a szimbólum, amely a terméken vagy annak csomagolásán van feltüntetve, azt jelzi, hogy a termék nem kezelhető együtt az egyéb háztartási hulladékkal. Az Ön feladata, hogy a készült hulladékokkal ellátott olyan kijelölt gyűjtőhelyre, amely az elektronikus hulladékoknak és az elektronikus berendezések üzemeltetésétől függetlenül. A hulladékoknak elkülönítet gyűjtése és újrahasznosítása hozzájárul a természeti erőforrások megőrzéséhez, egyáltalán azt a biztosítja, hogy a hulladékok újrahasznosítása az egészséges és a környezet nem ártalmas módon történik. Ha többet szeretne tudni arról, hogy a hulladékokat szemetet lehet az elhelyezni, ahol kezelhető hulladékokat a hulladékoknak, forduljon a helyi önkormányzatához, a háztartási hulladék begyűjtésével foglalkozó vállalkozás vagy a termék forgalmazójához.

Lietaisju atbrīvošana no nedrīgām ierīcēm Eiropas Savienības privātajās mājās

Šis simbols uz ierīci vai tā iepakojuma norāda, ka šis produkts nedrīkst tikt likvidēts kopā ar citiem mājokļa atkritumiem. Jūs esat atbildīgs par atbrīvošanu no nedrīgām ierīcēm, to nododot norādītajā savākšanas vieta, lai tiktu veikta nedrīgu elektriskā un elektroniskā aprīkojuma atbrīvošana pārrādē. Speciāla nedrīgu ierīču savākšana un atbrīvošana pārrādē palīdz paturēt dabas resursus un nodrošina tūdu atbrīvošanu, kas sārga ciklā veicina un apmierina vidi. Lai iegūtu papildu informāciju par to, kur atbrīvojat pārrādē var nosaukt nedrīgu ierīci, izlasiet, kas ir vietējā valsts, mājokļa, kurā iegādājāties.

Eiropas Savienības valstīs ir privāto namu ūķu atliekām ierīču izņemšana

Šis simbols attēlo produktu ar to pakotni, kas norāda, ka produkts nedrīkst tikt likvidēts kopā ar citiem mājokļa atkritumiem. Jūs privāto (iesmi) savā atliekām ierīču atbrīvošanu (ja) elektroniskā un elektroniskā ierīču savākšanas punktā, lai atliekām ierīču būtu atbrīvota un pēdīgtā, kas izņemta no dabas resursu un nodrošina tūdu atbrīvošanu, kas sārga ciklā veicina un apmierina vidi. Lai iegūtu papildu informāciju par to, kur atbrīvojat pārrādē var nosaukt nedrīgu ierīci, izlasiet, kas ir vietējā valsts, mājokļa, kurā iegādājāties.

Užlyžezė zūtytų sprežų per užtikynkūmū domovynų in Unij Europėjiskėj

Šis simbolis nurodo, kad produktas negali būti likviduojamas kartu su kitais namų atliekomis. Jūs esate atsakingas už atliekų išimimą iš namų atliekų, jas atnešdami į nurodytą atliekų surinkimo vietą. Speciali atliekų išimimo ir apdorojimo sistema padeda išsaugoti gamtinius išteklius ir užtikrina, kad atliekų apdorojimas būtų atliekamas saugiai ir aplinkai nekenksmingai. Jei norite sužinoti daugiau apie tai, kur galite išimti atliekas, kreipkitės į vietinę valdžią, į atliekų surinkimo vietą, į vietą, kurioje įsigijote produktą.

Descarte de equipamentos por usuários em residências da União Europeia

Este símbolo no produto ou no embalagem indica que o produto não pode ser descartado junto com o lixo doméstico. No entanto, é sua responsabilidade levar os equipamentos a serem descartados a um ponto de coleta designado para o descarte de equipamentos eletroeletrônicos. A coleta separada e o descarte dos equipamentos no momento do descarte ajudam na conservação dos recursos naturais e garantem que os equipamentos serão reciclados de forma a proteger a saúde das pessoas e o meio ambiente. Para obter mais informações sobre onde descartar equipamentos para reciclagem, entre em contato com o escritório local de sua cidade, o serviço de limpeza pública de seu bairro ou o loja em que adquiriu o produto.

Postup používateľov v krajínach Európskej únie pri vyhadzovaní zariadenia v domácom používaní na odpadu

Tento symbol na produkte alebo na jeho obale znamená, že nesmie byť vyhodnený s inými komunálnymi odpadmi. Namesto toho máte povinnosť odviesť toto zariadenie na zberom miesto, kde sa zabezpečuje recyklácia elektrických a elektronických zariadení. Separovaný zber a recyklácia zariadenia určného na odpad pomáha chrániť prírodné zdroje a zabezpečuje taký spôsob recyklácie, ktorý bude chrániť ľudské zdravie a životné prostredie. Ďalšie informácie o separovaní zberu a recyklácii získate na miestnom obecnom úrade, vo firme zabezpečujúcej zber vášho komunálneho odpadu alebo v predajni, kde ste produkt kúpili.

Ravneze z odpadno opremo v gospodinjstvih znotraj Evropske unije

Ta znak na izdelku ali embalaži označuje, da izdelka ne smete odložiti s drugimi gospodinjstvenimi odpadki. Odpadno opremo ste dolžni odnesti na določeno zbirno mesto za recikliranje odpadne električne in elektronske opreme. Z ločenim zbiranjem in recikliranjem odpadne opreme ob odložitvi pomagamo ohraniti naravno vire in zagotoviti, da bo odpadno opremo reciklirana tako, da se varuje zdravje ljudi in okolje. Več informacij o mestih, kjer lahko oddate odpadno opremo za recikliranje, lahko dobite na občini, v komunalnem podjetju ali trgovini, kjer ste izdelek kupili.

Kassering av förbrukningsmaterial, för hem- och privatnärvarande i EU

Produkt eller förbrukningsmaterial med det här symbolet får inte kasseras med vanlig hushållsavfall. I stället får du ansvaret för att produkten kasseras i ett behörigt återvinningstjänst för hantering av avfall och elektroniska avfall. Genom att lämna kasserade produkter till ett särskilt avfallssamlingsställe för elektroniska avfallssamlingsställen kan vi bidra till att minska och återvinna resurser och säkerställa att kasseringen sker på ett sätt som inte skadar miljön. För mer information om var du kan lämna kasserade produkter för återvinning.

Chemical Substances

HP is committed to providing our customers with information about the chemical substances that our products as needed to comply with legal requirements such as REACH (*Regulation EC No 1907/2006 of the European Parliament and the Council*). A chemical information report for this product can be found at: www.hp.com/go/reach.

Toxic and hazardous substance table


有毒有害物质表						
根据中国《电子信息产品污染控制管理办法》						
零件描述	有毒有害物质和元素					
	铅	汞	镉	六价铬	多溴联苯	多溴联苯醚
外壳和托盘*	0	0	0	0	0	0
电线*	0	0	0	0	0	0
印刷电路板*	X	0	0	0	0	0
打印系统*	X	0	0	0	0	0
显示器*	X	0	0	0	0	0
喷墨打印机墨盒*	0	0	0	0	0	0
驱动光盘*	X	0	0	0	0	0
扫描仪*	X	X	0	0	0	0
网络配件*	X	0	0	0	0	0
电池板*	X	0	0	0	0	0
自动双面打印系统*	0	0	0	0	0	0
外部电源*	X	0	0	0	0	0
0: 指此部件的所有均一材质中包含的这种有毒有害物质, 含量低于SJ/T11363-2006 的限制						
X: 指此部件使用的均一材质中至少有一种包含的这种有毒有害物质, 含量高于SJ/T11363-2006 的限制						
注: 环保使用期限的参考标识取决于产品正常工作的温度和湿度等条件						
*以上只适用于使用这些部件的产品						

Battery disposal in the Netherlands



Dit HP Product bevat een lithium-manganees-dioxide batterij. Deze bevindt zich op de hoofdprintplaat. Wanneer deze batterij leeg is, moet deze volgens de geldende regels worden afgevoerd.

Battery disposal in Taiwan



廢電池請回收

Please recycle waste batteries.

Attention California users

The battery supplied with this product may contain perchlorate material. Special handling may apply. For more information, go to the following Web site:

www.dtsc.ca.gov/hazardouswaste/perchlorate



English	European Union Battery Directive This product contains a battery that is used to maintain data integrity of real time clock or product settings and is designed to last the life of the product. Any attempt to service or replace this battery should be performed by a qualified service technician.
Français	Directive sur les batteries de l'Union Européenne Ce produit contient une batterie qui permet de maintenir l'intégrité des données pour les paramètres du produit ou l'horloge en temps réel et qui a été conçue pour durer aussi longtemps que le produit. Toute tentative de réparation ou de remplacement de cette batterie doit être effectuée par un technicien qualifié.
Deutsch	Batterie-Richtlinie der Europäischen Union Dieses Produkt enthält eine Batterie, die dazu dient, die Datenintegrität der Echtzeituhr sowie der Produkteinstellungen zu erhalten, und die für die Lebensdauer des Produkts ausreicht. Im Bedarfsfall sollte das Instandhalten bzw. Austauschen der Batterie von einem qualifizierten Servicetechniker durchgeführt werden.
Italiano	Direttiva dell'Unione Europea relativa alla raccolta, al trattamento e allo smaltimento di batterie e accumulatori Questo prodotto contiene una batteria utilizzata per preservare l'integrità dei dati dell'orologio in tempo reale o delle impostazioni del prodotto e la sua durata si intende pari a quella del prodotto. Eventuali interventi di riparazione o sostituzione della batteria devono essere eseguiti da un tecnico dell'assistenza qualificato.
Español	Directiva sobre baterías de la Unión Europea Este producto contiene una batería que se utiliza para conservar la integridad de los datos del reloj de tiempo real o la configuración del producto y está diseñada para durar toda la vida útil del producto. El mantenimiento o la sustitución de dicha batería deberá realizarla un técnico de mantenimiento cualificado.
Česky	Směrnice Evropské unie pro nakládání s bateriemi Tento výrobek obsahuje baterii, která slouží k uchování správných dat hodin reálného času nebo nastavení výrobku. Baterie je navržena tak, aby vydržela celou životnost výrobku. Jakýkoliv pokus o opravu nebo výměnu baterie by měl provést kvalifikovaný servisní technik.
Dansk	EU's batteridirektiv Produktet indeholder et batteri, som bruges til at vedligeholde dataintegriteten for realtidsur- eller produktindstillinger og er beregnet til at holde i hele produktets levetid. Service på batteriet eller udskiftning bør foretages af en uddannet servicetekniker.
Nederlands	Richtlijn batterijen voor de Europese Unie Dit product bevat een batterij die wordt gebruikt voor een juiste tijdsaanwijzing van de klok en het behoud van de productinstellingen. Bovendien is deze ontworpen om gedurende de levensduur van het product mee te gaan. Het onderhoud of de vervanging van deze batterij moet door een gekwalificeerde onderhoudstechnicus worden uitgevoerd.
Eesti	Euroopa Liidu aku direktiiv Toode sisaldab akut, mida kasutatakse reaajaaja kella andmeihsuse või toote sätete säilitamiseks. Aku on valmistatud kesma terve toote kasutusaja. Akut tohib hooldada või vahetada ainult kvalifitseeritud hooldustehnik.
Suomi	Euroopan unionin paristodirektiivi Tämä laite sisältää pariston, jota käytetään reaaliaikaisen kellon tietojen ja laitteiden asetusten säilyttämiseen. Pariston on suunniteltu kestävän laitteen koko käyttöajan ajan. Pariston mahdollinen korjaus tai vaihto on jätettävä pätevän huoltohenkilön tehtäväksi.
Ελληνικά	Οδηγία της Ευρωπαϊκής Ένωσης για τις ηλεκτρικές σήλες Αυτό το προϊόν περιλαμβάνει μια μπαταρία, η οποία χρησιμοποιείται για τη διατήρηση της ακεραιότητας των δεδομένων ρολογιού πραγματικού χρόνου ή των ρυθμίσεων προϊόντος και έχει σχεδιαστεί έτσι ώστε να διαρκεί όσο και το προϊόν. Τυχόν απόπειρες επιδιόρθωσης ή αντικατάστασης αυτής της μπαταρίας θα πρέπει να πραγματοποιούνται από κατάλληλα εκπαιδευμένο τεχνικό.
Magyar	Az Európai unió telepek és akkumulátorok direktívája A termék tartalmaz egy elemet, melynek feladata az, hogy biztosítsa a valós idejű óra vagy a termék beállításainak adatintegritását. Az elem úgy van tervezve, hogy végig kiiltsa a termék használata során. Az elem bármilyen javítását vagy cseréjét csak képzett szakember végezheti el.
Latvija	Eiropas Savienības Bateriju direktīva Produkts satur bateriju, ko izmanto reālā laika pulksteņa vai produkta iestatījumu datu integritātes saglabāšanai, un tā ir paredzēta visam produkta dzīves ciklam. Jebkura atļauja vai baterijas nomaiņa ir jāveic atbilstoši kvalificētam darbiniekam.
Lietuvai	Europos Sąjungos baterijų ir akumuliatorių direktyva Šiame gaminyje yra baterija, kuri naudojama, kad būtų galima prižiūrėti realaus laiko laikrodžio veikimą arba gaminio nuostatas; ji skirta veikti visą gaminio eksploatavimo laiką. Bet kokius šios baterijos aptarnavimo arba keitimo darbus turi atlikti kvalifikuotas aptarnavimo technikas.
Polski	Dyrektywa Unii Europejskiej w sprawie baterii i akumulatorów Produkt zawiera baterię wykorzystywaną do zachowania integralności danych zegara czasu rzeczywistego lub ustawień produktu, która podtrzymuje działanie produktu. Przegląd lub wymiana baterii powinny być wykonywane wyłącznie przez uprawnionego technika serwisu.
Português	Directiva sobre baterias da União Europeia Este produto contém uma bateria que é usada para manter a integridade dos dados do relógio em tempo real ou das configurações do produto e é projetada para ter a mesma duração que este. Qualquer tentativa de consertar ou substituir essa bateria deve ser realizada por um técnico qualificado.
Slovenčina	Smernica Európskej únie pre zaobchádzanie s batériami Tento výrobok obsahuje batériu, ktorá slúži na uchovanie správnych údajov hodín reálneho času alebo nastavení výrobku. Batéria je skonštruovaná tak, aby vydržala celú životnosť výrobku. Akýkoľvek pokus o opravu alebo výmenu batérie by mal vykonať kvalifikovaný servisný technik.
Slovenščina	Direktiva Evropske unije o baterijah in akumulatorjih V tem izdelku je baterija, ki zagotavlja natančnost podatkov ure v realnem času ali nastavitev izdelka v celotni življenjski dobi izdelka. Kakršno koli popravilo ali zamenjavo te baterije lahko izvede le pooblaščen tehnik.
Svenska	EU:s batteridirektiv Produkten innehåller ett batteri som används för att upprätthålla data i realtidsklockan och produktinställningarna. Batteriet ska räkna produktens hela livslängd. Endast kvalificerade servicetekniker får utföra service på batteriet och byta ut det.
Български	Директива за батерии на Европейския съюз Този продукт съдържа батерия, която се използва за поддържане на целостта на данните на часовника в реално време или настройките за продукта, създадена на издръжливост през целия живот на продукта. Сервизът или замяната на батерията трябва да се извършва от квалифициран техник.
Română	Directiva Uniunii Europene referitoare la baterii Acest produs conține o baterie care este utilizată pentru a menține integritatea datelor ceasului de timp real sau setărilor produsului și care este proiectată să funcționeze pe întreaga durată de viață a produsului. Orice lucrare de service sau de înlocuire a acestei baterii trebuie efectuată de un tehnician de service calificat.

Regulatory notices

The HP Photosmart meets product requirements from regulatory agencies in your country/region.

This section contains the following topics:

- [Regulatory model identification number](#)
- [FCC statement](#)
- [VCCI \(Class B\) compliance statement for users in Japan](#)
- [Notice to users in Japan about the power cord](#)
- [Notice to users in Korea](#)
- [HP Photosmart B109 series declaration of conformity](#)

Regulatory model identification number

For regulatory identification purposes, your product is assigned a Regulatory Model Number. The Regulatory Model Number for your product is SDGOB-0912. This regulatory number should not be confused with the marketing name (HP Photosmart B109 series, etc.) or product numbers (Q8433A, etc.).

FCC statement

FCC statement

The United States Federal Communications Commission (in 47 CFR 15.105) has specified that the following notice be brought to the attention of users of this product.

This equipment has been tested and found to comply with the limits for a Class B digital device, pursuant to Part 15 of the FCC Rules. These limits are designed to provide reasonable protection against harmful interference in a residential installation. This equipment generates, uses and can radiate radio frequency energy and, if not installed and used in accordance with the instructions, may cause harmful interference to radio communications. However, there is no guarantee that interference will not occur in a particular installation. If this equipment does cause harmful interference to radio or television reception, which can be determined by turning the equipment off and on, the user is encouraged to try to correct the interference by one or more of the following measures:

- Reorient the receiving antenna.
- Increase the separation between the equipment and the receiver.
- Connect the equipment into an outlet on a circuit different from that to which the receiver is connected.
- Consult the dealer or an experienced radio/TV technician for help.

For further information, contact:

Manager of Corporate Product Regulations
Hewlett-Packard Company
3000 Hanover Street
Palo Alto, Ca 94304
(650) 857-1501

Modifications (part 15.21)

The FCC requires the user to be notified that any changes or modifications made to this device that are not expressly approved by HP may void the user's authority to operate the equipment.

This device complies with Part 15 of the FCC Rules. Operation is subject to the following two conditions: (1) this device may not cause harmful interference, and (2) this device must accept any interference received, including interference that may cause undesired operation.

VCCI (Class B) compliance statement for users in Japan

この装置は、情報処理装置等電波障害自主規制協議会（VCCI）の基準に基づくクラスB情報技術装置です。この装置は、家庭環境で使用することを目的としています。この装置がラジオやテレビジョン受信機に近接して使用されると受信障害を引き起こすことがあります。

取り扱い説明書に従って正しい取り扱いをして下さい。

Notice to users in Japan about the power cord

製品には、同梱された電源コードをお使い下さい。

同梱された電源コードは、他の製品では使用出来ません。

Notice to users in Korea

B 급 기기(가정용 방송통신기기)

이 기기는 가정용(B급)으로 전자파적합등록을 한 기기로서 주로 가정에서 사용하는 것을 목적으로 하며, 모든 지역에서 사용할 수 있습니다.

HP Photosmart B109 series declaration of conformity



DECLARATION OF CONFORMITY

according to ISO/IEC 17050-1 and EN 17050-1

DoC #: SDGOB-0912

Supplier's Name: Hewlett-Packard Company
Supplier's Address: 16399 West Bernardo Drive San Diego, CA 92127, USA

declares, that the product

Product Name and Model: HP Photosmart All-in-One Series - B109

Regulatory Model Number: ¹⁾ SDGOB-0912

Product Options: All

Power Adapter: 0957-2269

conforms to the following Product Specifications and Regulations:

EMC:

CISPR 22:2005 / EN55022:2006 Class B
 CISPR 24:1997 + A1:2001 + A2:2002 / EN55024:1998 + A1:2001 + A2:2003 Class B
 IEC 61000-3-2: 2005 / EN 61000-3-2: 2006
 IEC 61000-3-3: 1994 + A1:2001 / EN 61000-3-3: 1995 + A1:2001
 FCC CFR 47 Part 15 Class B / ICES-003, Issue 4
 GB9254-1998, GB17625. 1-2003

Safety:

IEC 60950-1:2001 / EN60950-1:2001
 IEC 60825-1 Ed. 1.2:2001 / EN 60825-1 + A2 + A1: 2002 (LED)
 GB4943:2001

This device complies with part 15 of the FCC Rules. Operation is subject to the following two conditions: (1) This device may not cause harmful interference, and (2) this device must accept any interference received, including interference that may cause undesired operation.

The product herewith complies with the requirements of the Low Voltage Directive 2006/95/EC, the EMC Directive 2004/108/EC and carries the CE-marking accordingly.

Additional Information:

- 1) This product is assigned a Regulatory Model Number which stays with the regulatory aspects of the design. The Regulatory Model Number is the main product identifier in the regulatory documentation and test reports, this number should not be confused with the marketing name or the product numbers.

Local contact for regulatory topics only:

EMEA: Hewlett-Packard GmbH, HQ-TRE, Herrenberger Strasse 140, 71034 Boeblingen, Germany www.hp.com/go/certificates
 U.S.: Hewlett-Packard, 3000 Hanover St., Palo Alto 94304, U.S.A. 650-857-1501

Index

Symbols/Numerics

10 x 15 cm photo paper
specifications 100

A

after the support period 52

B

buttons, control panel 6

C

connection problems
HP All-in-One will not turn
on 53

control panel
buttons 6
features 6

copy
fit to page fails 67
specifications 101
troubleshooting 67

crop
fails 72

customer support
warranty 52

D

damaged, ink cartridge 78
diagnostic page 47
display
change measurements 57

E

envelopes
specifications 100
environment
Environmental product
stewardship program 101
environmental
specifications 100
error messages
memory cards 72
reading or writing file 70

F

file
invalid name 71
supported formats 71
unreadable 70
firmware revision mismatch 68
fit to page fails 67

I

improper shutdown 68
ink
drying time 75
ink cartridges
damaged 78
error messages 75
HP ink depleted 88
incompatible 76
incorrect 76
missing 78
non-HP ink 87
previously used 89
invalid file name 71

L

labels
specifications 100
legal paper
specifications 100
letter paper
specifications 100

M

maintenance
diagnostic page 47
print quality report 47
memory cards
error message 72
file unreadable 70
HP Photosmart cannot
read 63
photos missing 70
troubleshoot 63
missing
ink cartridge 78
text from scan 66

P

paper
recommended types 10
specifications 100
tips 14
phone support 51
phone support period
period for support 51
photo paper
recommended types 9
specifications 100
photos
missing 70
print
diagnostic page 47
print quality report 47
specifications 101
troubleshooting 58
Web pages 24
print quality report 47
print settings
print quality 63
printhead
problems 89
Printing Shortcuts tab 25
problems
copy 67
error messages 67
print 58
scan 65

R

recycle
ink cartridges 102
regulatory notices
regulatory model
identification number 106
reinstall software 57
reports
diagnostic 47
print quality 47

S

scan
crop incorrect 65
fails 68

- scan specifications 101
- text appears as dotted lines 65
- text format incorrect 66
- text incorrect 66
- troubleshooting 65
- software installation
 - reinstall 57
 - uninstall 57
- system requirements 100

T

- technical information
 - copy specifications 101
 - environmental
 - specifications 100
 - paper specifications 100
 - print specifications 101
 - scan specifications 101
 - system requirements 100
- text
 - dotted lines on scan 65
 - incorrect format on scan 66
 - incorrect or missing on scan 66
- transparencies
 - specifications 100
- troubleshoot
 - incorrect measurements 57
 - setup 53
- troubleshooting
 - copy 67
 - error messages 67
 - memory card 63
 - print 58
 - scan 65

U

- uninstall software 57

W

- warranty 52
- Web pages, print 24