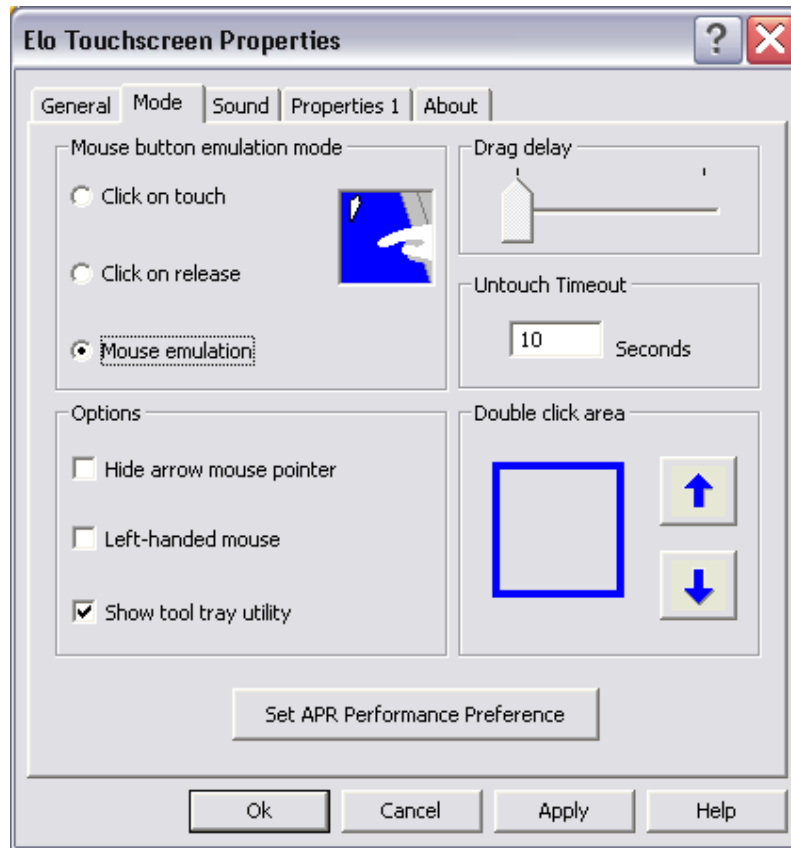


Customization of APR Settings in HP Business Touchscreen Monitors

Acoustic Pulse Recognition (APR) performance can be customized in the 3.1.2 driver by clicking the Set Performance Preference button on the Mode tab of the Elo driver panel.

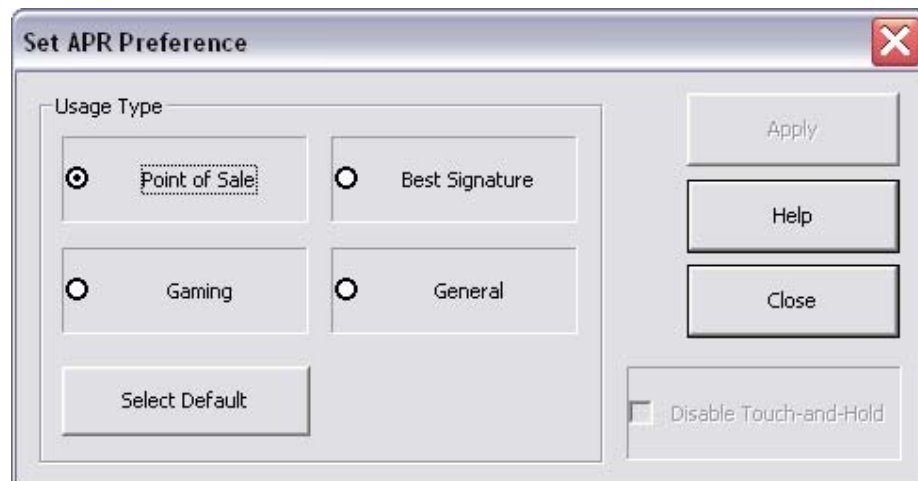


in the APR on the control

The APR Preference window opens.

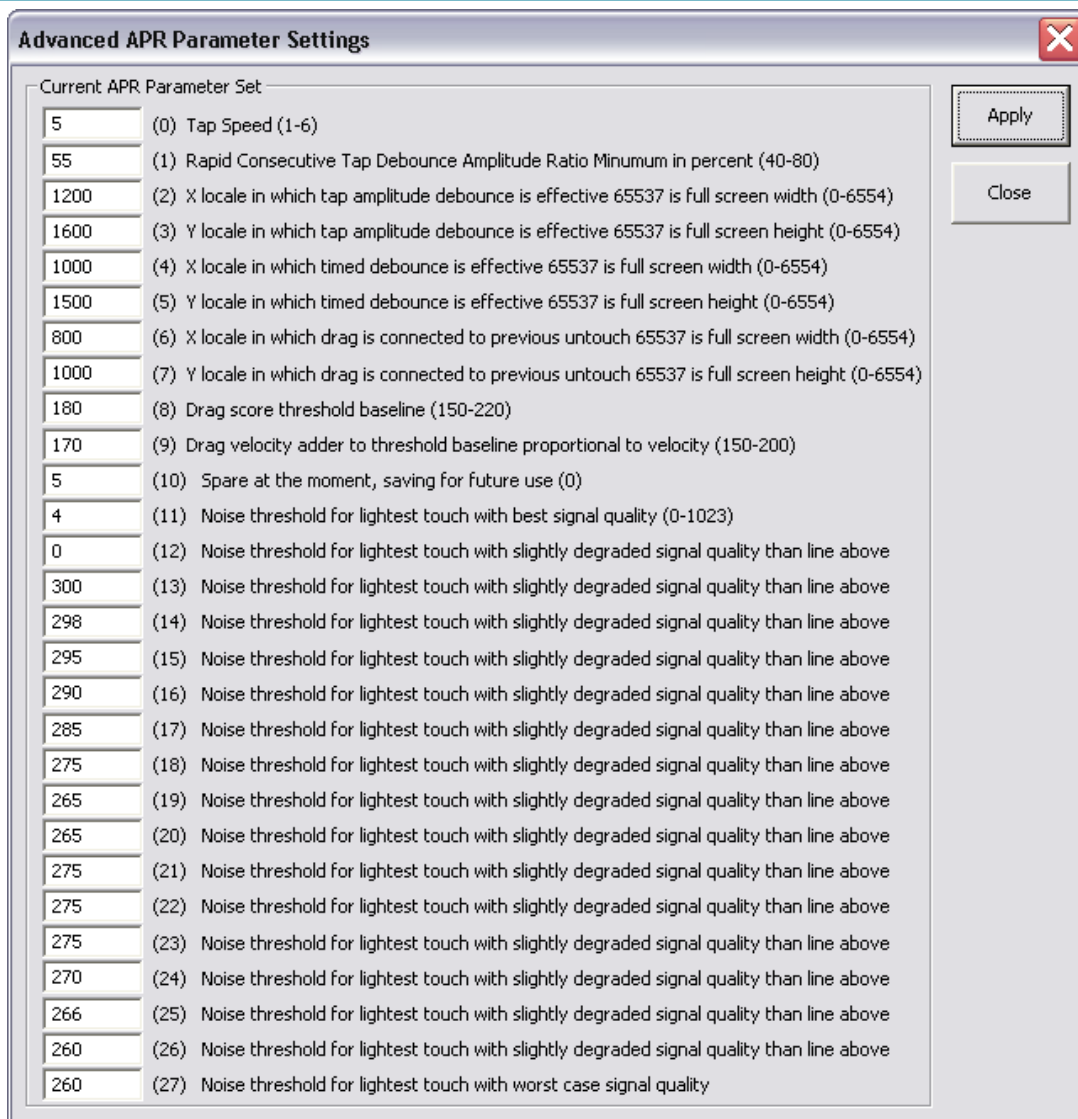
Click any of the four preference buttons and apply. Clicking Select Default selects the Point of mode. *You must hit Apply in order to make choice take effect, including Select Default.*

Further customization can be done by double-right-clicking in the APR Preference window; that opens the Parameter Set window:



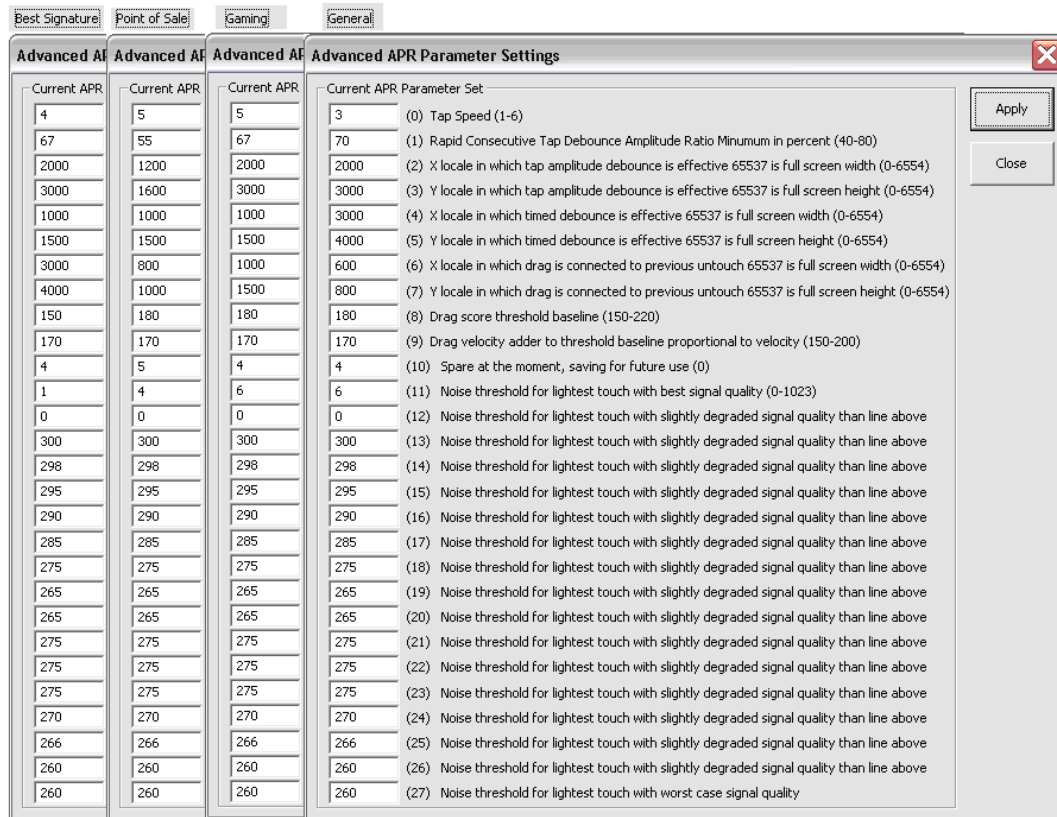
mode click Sale any be will





You may use the mouse and keyboard to edit any parameter. Click Apply to make the edited parameters take effect. Any time altered parameters are set, red text will indicate * Customized settings in use in the APR Preference window.

Selecting and applying the Default or any of the four modes will overwrite the custom settings (you will be warned and prompted before the overwrite occurs). Comments on the parameter settings can be found on the last page of this document. A comparison of the parameters for the four selectable presets is below:



Parameter (0)	Lower = better multi-touch rejection
Parameter (1)	Higher = better multi-touch rejection
Parameter (2)	Higher = better multi-touch rejection
Parameter (3)	Higher = better multi-touch rejection
Parameter (4)	Higher = better multi-touch rejection
Parameter (5)	Higher = better multi-touch rejection
Parameter (6)	Higher = better drag performance
Parameter (7)	Higher = better drag performance
Parameter (8)	Lower = better drag performance
Parameter (11)	Lower = higher sensitivity, but more bounce (low is good for drag)
Parameters (12 - 27)	These are generally left alone; lowering by 20 or so each will increase sensitivity but may make bounce intolerable

© 2010 Hewlett-Packard Development Company, L.P.

Microsoft, Windows, and Windows Vista are either trademarks or registered trademarks of Microsoft Corporation in the United States and/or other countries. Elo TouchSystems is a trademark of the Tyco Electronics group of companies and its licensors.

The only warranties for HP products and services are set forth in the express warranty statements accompanying such products and services. Nothing herein should be construed as constituting an additional warranty. HP shall not be liable for technical or editorial errors or omissions contained herein. This document contains proprietary information that is protected by copyright. No part of this document may be photocopied, reproduced, or translated to another language without the prior written consent of Hewlett-Packard Company.

