

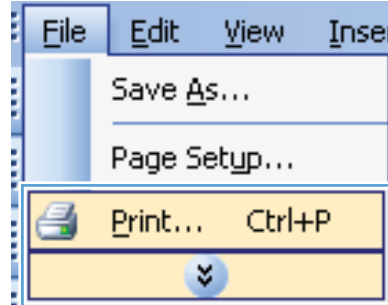


HP Color LaserJet Enterprise CP4020-CP4520 Series Printer

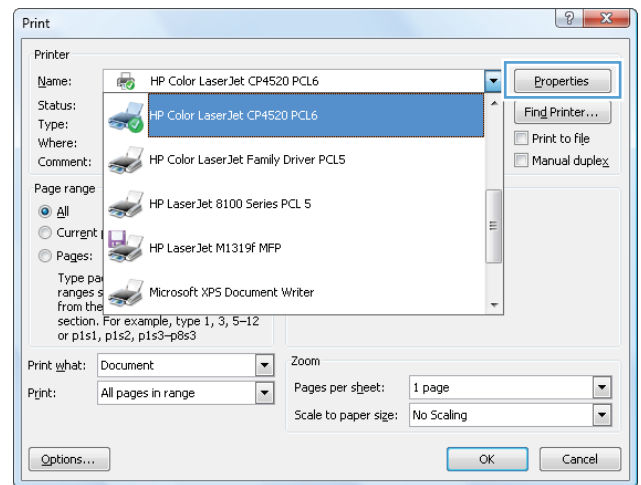


Use a printing shortcut with Windows

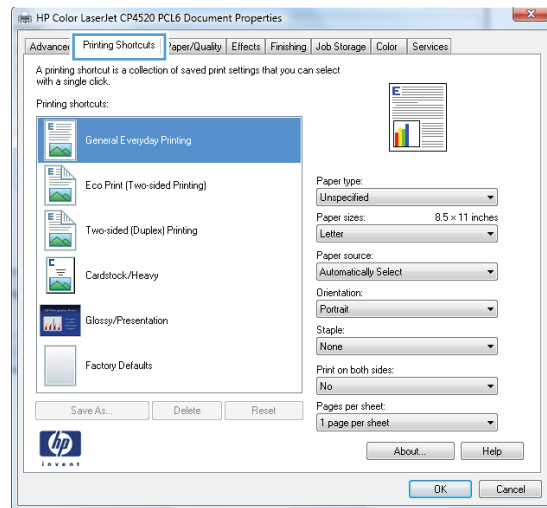
1. On the **File** menu in the software program, click **Print**.



2. Select the product, and then click the **Properties** or **Preferences** button.



3. Click the **Printing Shortcuts** tab.



4. Select one of the shortcuts, and then click the **OK** button.

NOTE: When you select a shortcut, the corresponding settings change on the other tabs in the printer driver.

