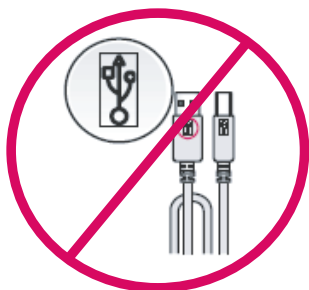


# HP 915 All-in-One Setup Guide



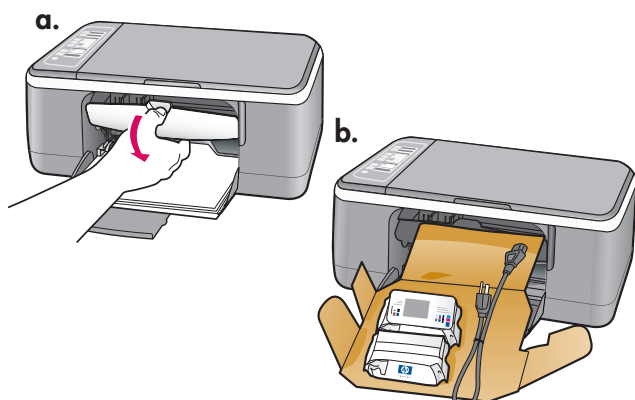
1



ENG

**WARNING:** To ensure that the software is installed correctly, do not connect the USB cable until step 14.

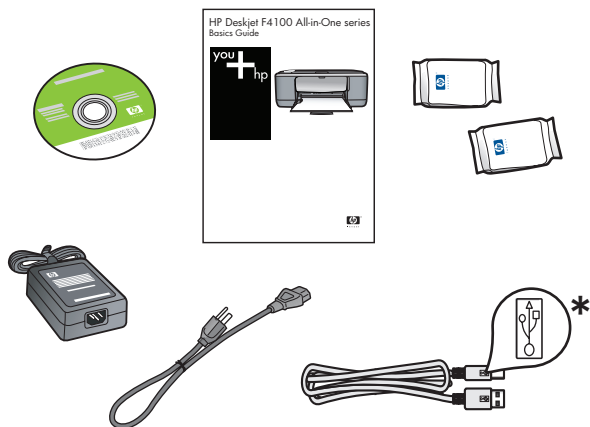
2



ENG

Lower the paper tray and the print cartridge door.  
**IMPORTANT:** Remove all packing material from the device.

3



ENG

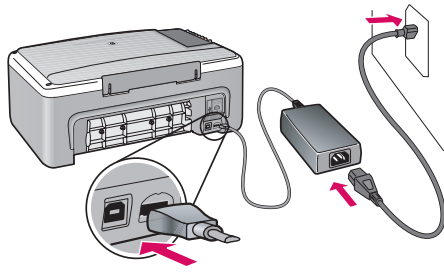
Verify the box contents. The contents of your box may differ.  
\* Purchase a USB cable separately if it is not included.

ENG



\*CB720-90001\*

4

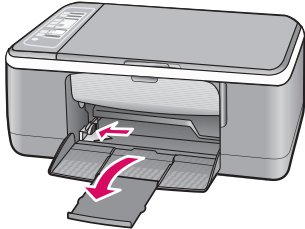


ENG

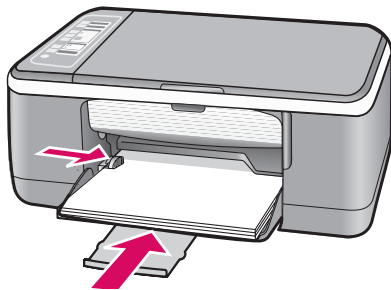
Connect the power cord and adapter.

5

a.



b.

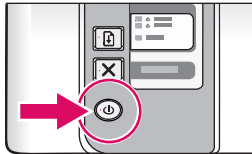


ENG

Load plain white paper.

**CAUTION:** Do not force paper too far into the tray.

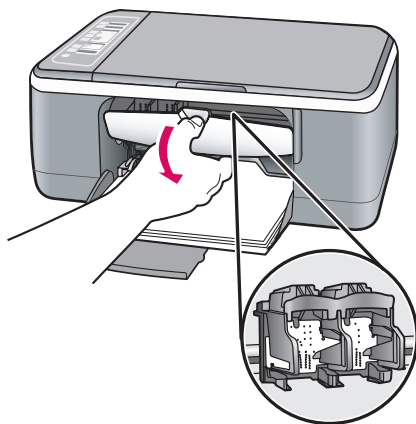
6



ENG

Press  (**On** button).

7

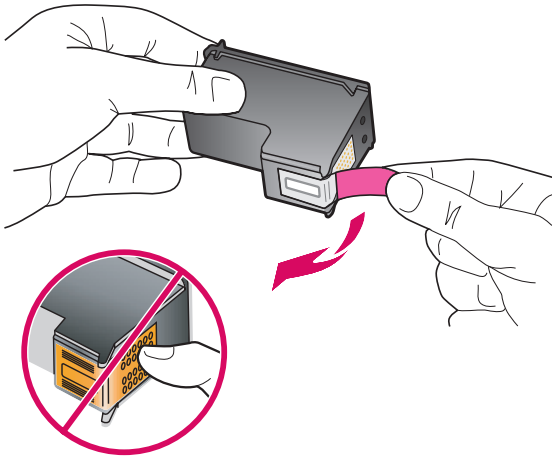


ENG

Open the print cartridge door. Wait until the print carriage moves to the center.

**IMPORTANT:** The device must be turned on to insert cartridges.

8

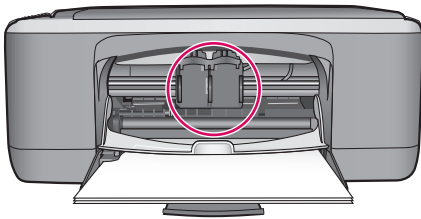


ENG

Remove the tape from both cartridges.

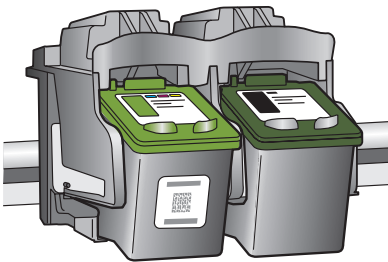
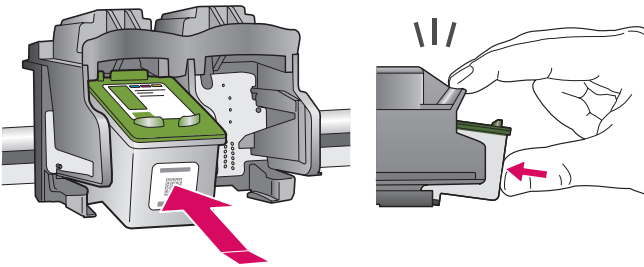
**CAUTION:** Do not touch the copper-colored contacts or re-tape the cartridges.

9

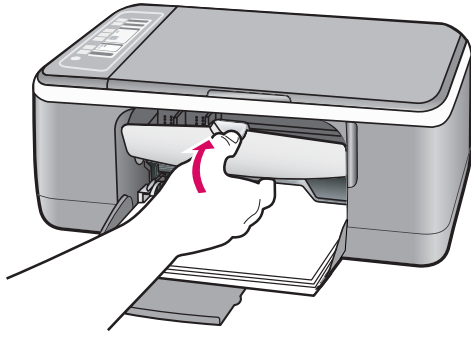


ENG

- Hold the cartridges with the HP logo on top.
- Insert the **tri-color** cartridge in the **left cartridge slot** and the **black cartridge** in the **right cartridge slot**. Make sure you push the cartridges in **firmly** until they **snap into place**.



10

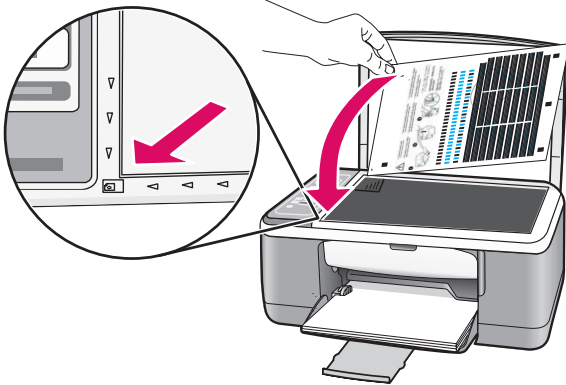


ENG

Close the print cartridge door.

**IMPORTANT:** Wait while the alignment page prints automatically.

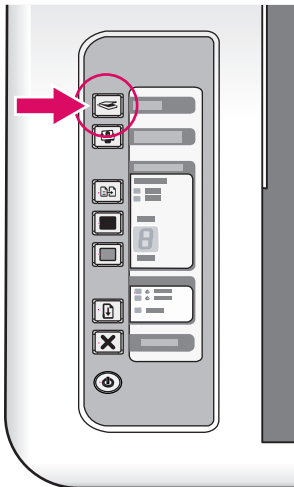
11




ENG

After the alignment page is printed, place it face down on the glass as shown in the picture. Close the lid.

12



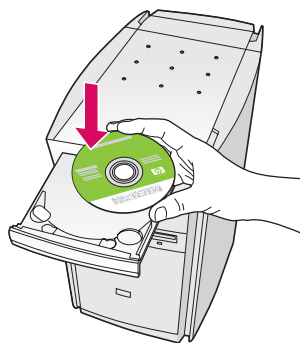
ENG

Press  (**Scan** button) to complete alignment. Wait until the green **On** light stops blinking.



Select the device software CD.

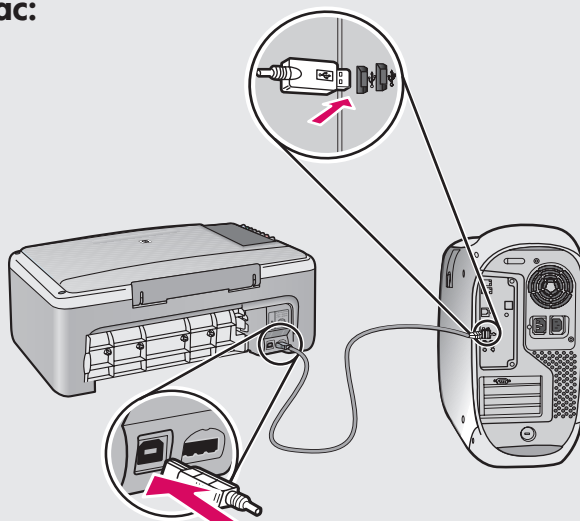
## 14a Windows:



**Windows:** Insert the CD into the computer after it has been turned on and started up.

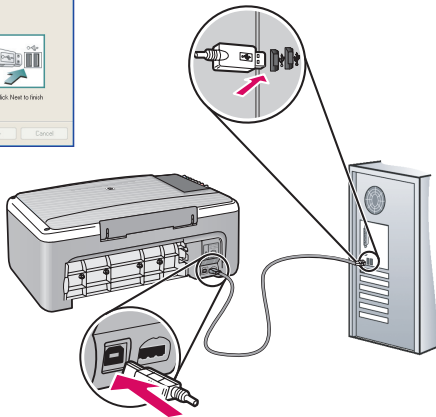
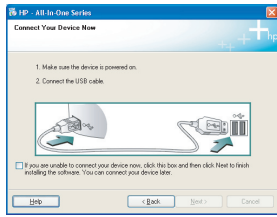
**IMPORTANT:** If the startup screen does not appear, double-click **My Computer**, double-click the **CD-ROM** icon with the HP logo, and then double-click **setup.exe**.

## Mac:



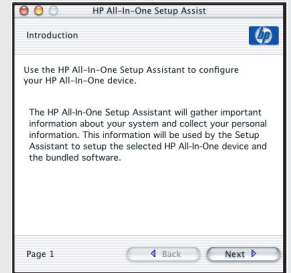
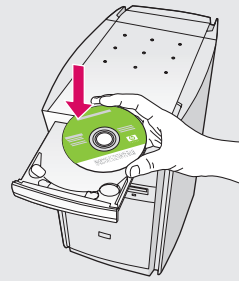
**Mac:** Connect the USB cable to the port on the back of the HP All-in-One, and then to any USB port on the computer.

## 14b Windows:



**ENG Windows:** Once the USB prompt appears, connect the USB cable to the port on the back of the HP All-in-One, and then to any USB port on the computer.

## Mac:



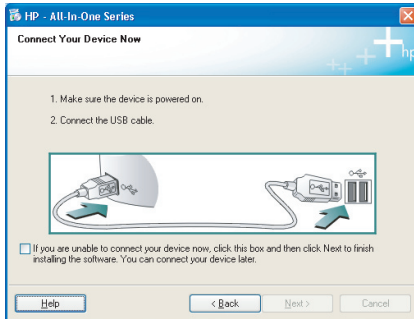
**ENG Mac:** Insert the CD. Double-click the **HP All-in-One Installer** icon. Follow the onscreen instructions.

## 15 Windows:

**ENG Windows:** Follow the onscreen instructions to complete the software installation.

## Mac:

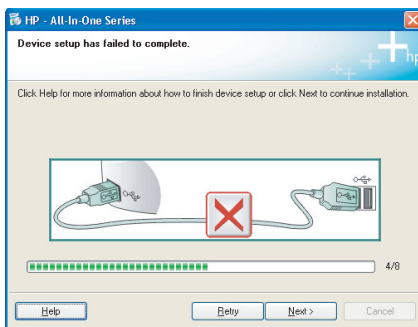
**ENG Mac:** Complete the **Setup Assistant** screen.



ENG

**Problem:** (Windows only) You did not see the screen prompting you to connect the USB cable.

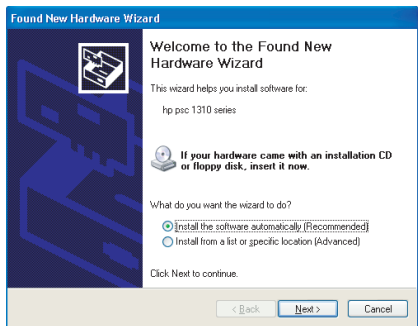
**Action:** Cancel all screens. Remove and then re-insert the green HP All-in-One Windows CD. Refer to Step 14.



ENG

**Problem:** (Windows only) The **Device Setup Has Failed To Complete** screen displays.

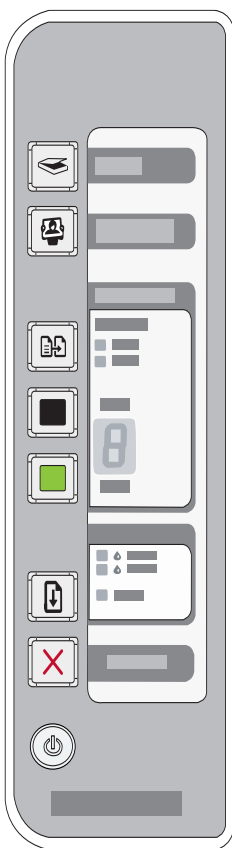
**Action:** Unplug the device and plug it in again. Check all connections. Make sure the USB cable is plugged into the computer. Do not plug the USB cable into a keyboard or a non-powered USB hub. Refer to Step 14.



ENG

**Problem:** (Windows only) The Microsoft **Add Hardware** screens display.  
**Action:** Cancel all screens. Unplug the USB cable, and then insert the green HP All-in-One Windows CD. Refer to Steps 13 and 14.

## Control panel



	Scan
	Photosmart Essential
	Paper Type
	Start Copy Black
	Start Copy Color
	Check print cartridge lights
	Resume
	Cancel
	On