



## Quick Setup

Features and configurations vary by model.  
Some cables and adaptors may not be included and are sold separately.

# COMPAQ

## 快速安裝

電腦的功能與設定會因型號不同而有所差異。  
不會隨附某些連接線和轉接頭，而是另行販售。

# 1

### Keyboard / Mouse

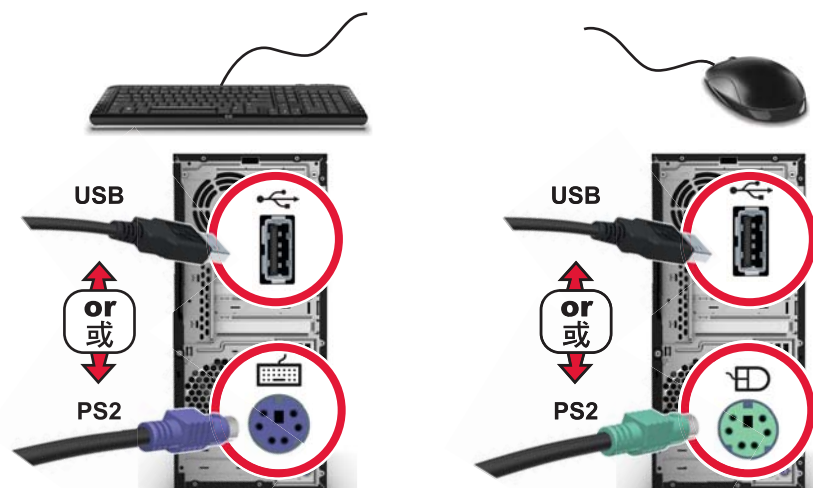
#### 鍵盤 / 滑鼠

#### Wired option

Match the colors.

#### 接線選擇

請對照顏色接線。



#### Wireless option

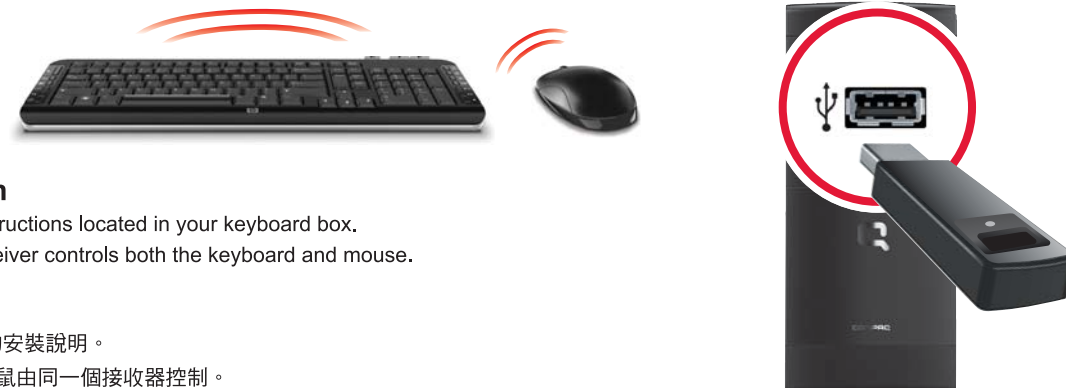
Refer to the setup instructions located in your keyboard box.

**NOTE:** The same receiver controls both the keyboard and mouse.

#### 無線連接選擇

請參閱鍵盤包裝盒上的安裝說明。

**注意事項：** 鍵盤和滑鼠由同一個接收器控制。



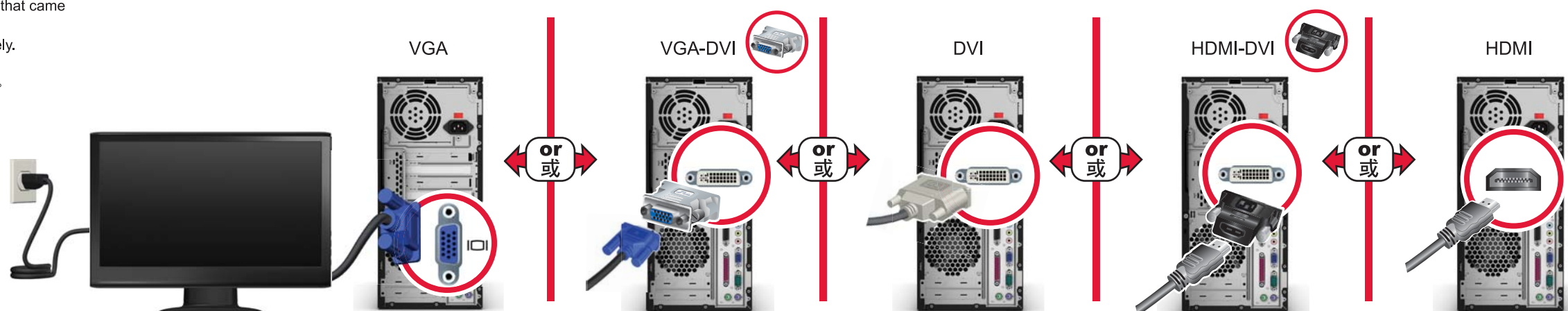
# 2

### Monitor

#### 顯示器

Refer to the setup instructions that came with your monitor.  
Monitors may be sold separately.

請參閱顯示器隨附的安裝說明。  
顯示器可能另行販售。



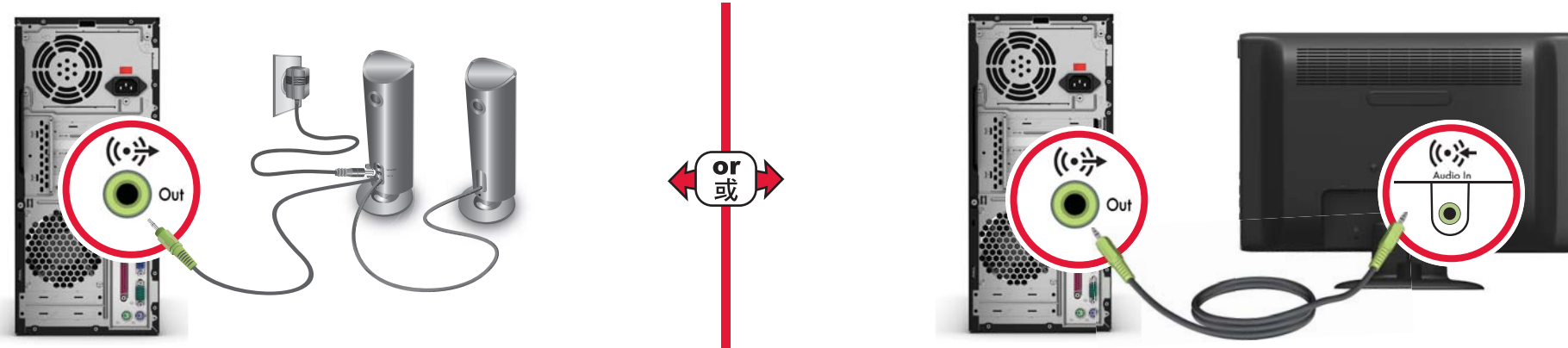
# 3

### Speakers

#### 喇叭

Refer to the setup instructions that came with your speakers.  
Speakers may be sold separately.

請參閱喇叭隨附的安裝說明。  
喇叭可能另行販售。



# 4

### Connect Power

#### 連接電源

Connect computer to electrical outlet.  
Grounded connection or connection to surge protector is recommended.

將電腦連接到電源插座。  
建議使用接地線或連接至避雷保護器。



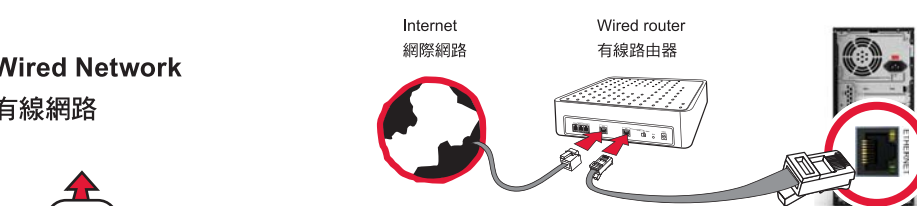
# 5

### LAN

#### 區域網路

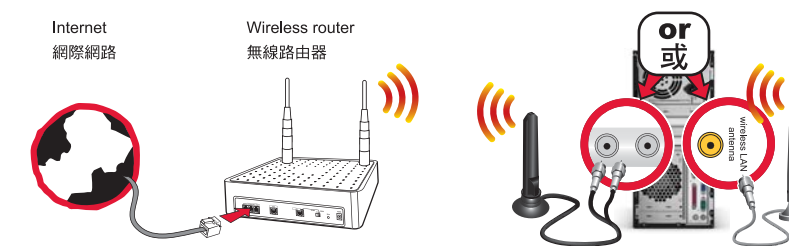
#### Wired Network

#### 有線網路



#### Wireless Network

#### 無線網路



Routers and Internet access are required and sold separately.  
必須有路由器和網際網路連線，皆為另行販售。

# 6

### Power On

#### 開啟電源



Copyright © 2009 Hewlett-Packard Development Company, L.P.  
The information contained herein is subject to change without notice.  
Printed in Xxxxx