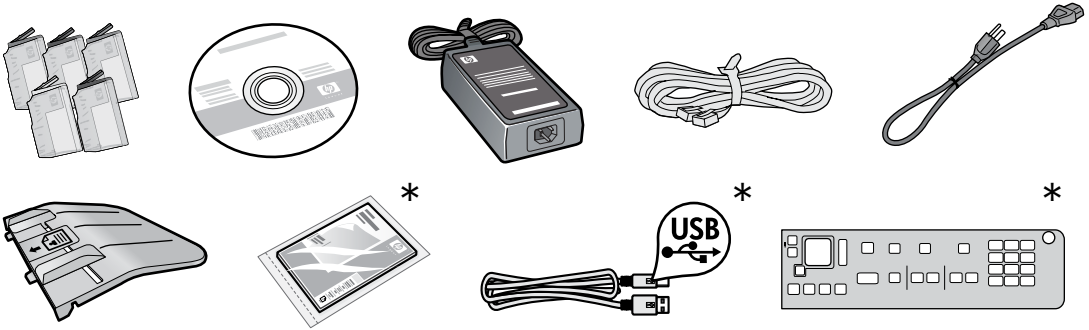


Inside...

Setup troubleshooting	3
Get to know your HP Photosmart	4
Features and tips	6
Get more info	8
Specs	8
Networked printer setup and use	9
Fixing connectivity issues	10

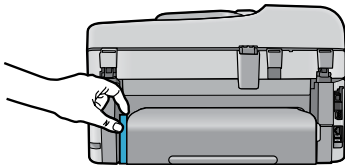
Start setup here...

1 Verify box contents

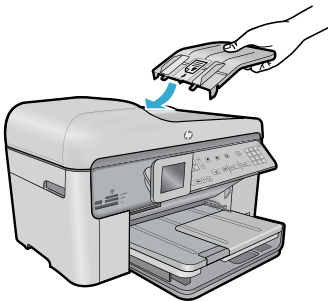


* Not included with all models

2 Unpack printer. Remove all tape, protective film, and packing material.

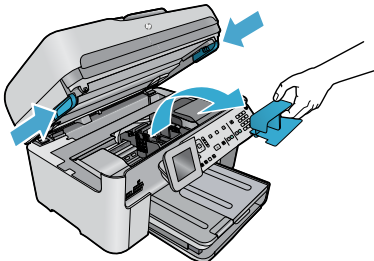


Remove the cardboard that secures the two-sided printing accessory (if present)



Install the document feeder tray

1. Remove the cardboard restraint from the top of the printer.
2. Install the document feeder tray, lining up the tabs on the edges with the slots in the printer. Insert the tabs into the slots until they snap into place.

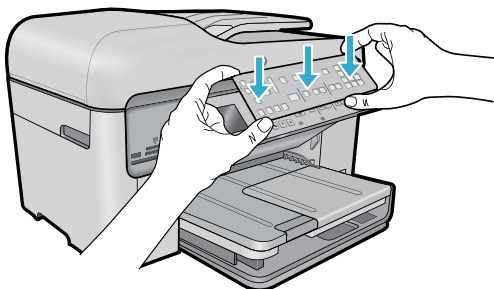


Remove the carriage restraint

1. Open the carriage access door by pulling upward on the handles on the sides of the printer.
 - The carriage access door cannot be opened if the scanner lid is open.
2. Remove the blue tape that holds the carriage restraint in place.
3. Slide the carriage to the left.
4. Remove the orange plastic restraint from the carriage.
5. Close the carriage access door.



3 Install faceplate, if included




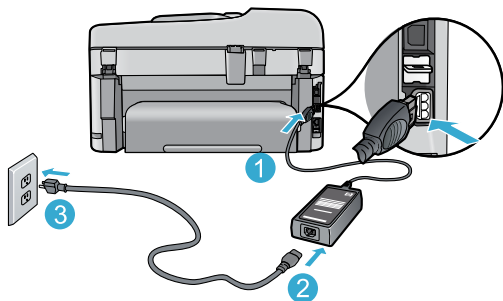
Install the faceplate

If you need to install a faceplate on the control panel:

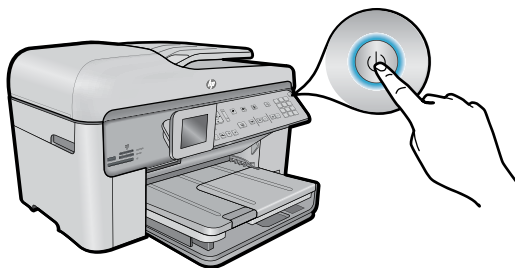
1. Remove the existing faceplate by pulling up on the right edge.
2. Position the new faceplate over the buttons on the control panel.
3. Press down firmly on all edges of the faceplate until it snaps into place.


4 Connect and power on

 Do **not** connect the USB cable unless prompted by the software! (Windows® only)



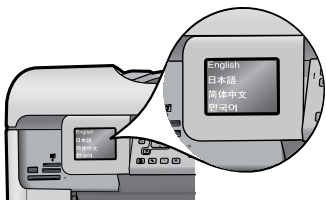
Connect the power cord and adapter.



Press  to turn on the HP Photosmart.


5 Follow the Setup Wizard

Be sure to follow the instructions on the display as it guides you through setting up and connecting the HP Photosmart, including inserting ink cartridges and setting up a wireless network connection.



For computers without a CD/DVD drive, go to www.hp.com/support to download and install the software.

WiFi Protected Setup (WPS) – (Optional)

This HP Photosmart supports WiFi Protected Setup (WPS)  for easy one-button wireless setup.


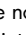
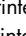
- During the setup, if you are prompted on the display for Wi-Fi Protected Setup (WPS), and your router supports this method, press the WPS button on the router. If the connection is successful, the wireless light on the **Wireless** button will turn on.
- Alternatively, you can follow the setup wizard on the printer display to connect using another wireless setup method.

Register your HP Photosmart

Get quicker service and support alerts by registering at www.register.hp.com.

Setup troubleshooting

If the HP Photosmart doesn't turn on...

1. Check the power cord.
 - Make sure the power cord is firmly connected to both the printer and the power adaptor. A light on the power supply will be on if the power cord is working.
 - If you are using a power strip, check that the power strip is turned on. Or, plug the printer directly into a power outlet.
 - Test the power outlet to make sure that is working. Plug in another appliance that you know works, and see if it has power. If not, there may be a problem with the power outlet.
 - If you plugged the printer into a switched outlet, check that the outlet is turned on.
2. Turn off the printer, and then unplug the power cord. Plug the power cord back in, and then press the  button to turn on the printer.
3. Take care not to press the  button too quickly. Press it only once. It might take a few minutes for the printer to turn on, so if you press the  button more than once, you might be turning off the printer.
4. If you have completed all the above steps, but are still having a problem, contact HP support for service. Go to www.hp.com/support.

If you are unable to print...

Windows

Make sure that your HP Photosmart is set as the default printer and not offline. To do this:

- On the Windows taskbar, click **Start**.
- Then click **Control Panel**.
- Then open:
 - **Devices and Printers** (Windows 7)
 - **Printers** (Vista)
 - **Printers and Faxes** (XP)

Look for your printer to see if it has a check mark in a circle next to it. If not, right-click the printer icon and choose **Set as default printer** from the menu.

To check that your printer is not off-line, right-click the printer icon and ensure that **Use Printer Offline** and **Pause Printing** are not selected.

If you still can't print, or if the Windows software installation failed:

1. Remove the CD from your computer's CD drive, and then disconnect the printer from the computer.
2. Restart the computer.
3. Temporarily disable any software firewall and close any anti-virus software.
4. Insert the printer software CD into the computer CD drive, then follow the onscreen instructions to install the printer software. Do not connect the USB cable until you are told to do so.
5. After the installation finishes, restart the computer and any security software you disabled or closed.

Mac

If you are unable to print, uninstall and reinstall the software.

The uninstaller removes all the HP software components that are specific to this HP Photosmart. It does not remove any components that are shared by other printers or programs.

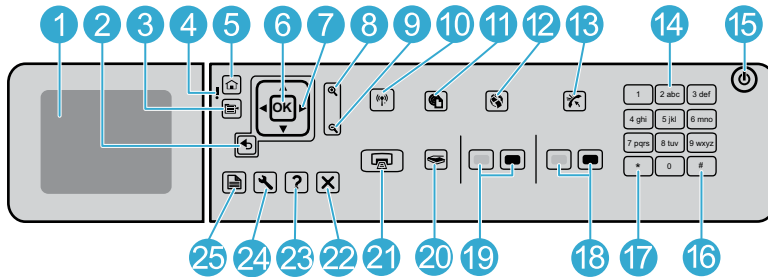
To uninstall the software:

1. Disconnect the printer from your computer.
2. Open the Applications: Hewlett-Packard folder.
3. Double-click **HP Uninstaller**. Follow the onscreen instructions.

To install the software:

1. Insert the CD into your computer's CD drive.
2. On the desktop, open the CD, then double-click HP Installer.
3. Follow the onscreen instructions.

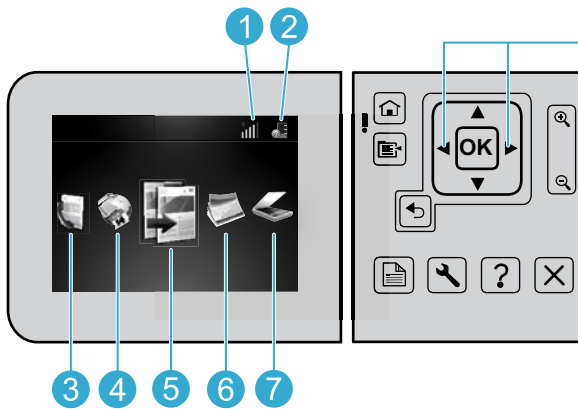
Get to know your HP Photosmart



- 1 Color graphics display** (also referred to as the display): Displays menus, photos, and messages. The display can be pulled up and angled for better viewing.
- 2 Back:** Returns to the previous screen.
- 3 Menu:** Presents a set of options related to the current display.
- 4 Attention light:** Indicates a problem occurred. See the display for more information.
- 5 Home:** Returns to the Home screen (the default screen when you turn on the product).
- 6 OK:** Selects a menu setting, value, or photo.
- 7 Directional pad:** Navigates through photos and menu options.
- 8 Zoom In:** Zooms in on a photo. Use this button together with the arrows on the directional pad to crop the photo before printing.
- 9 Zoom Out:** Zooms out to show more of a photo.
- 10 Wireless button and light:** Opens the Network menu where you can access the Wireless Setup Wizard and Wi-Fi Protected Setup. The wireless light indicates the status of the connection:
 - Off: The wireless radio is off.
 - On (not flashing): The wireless radio is on and the printer is connected to a network.
 - Flashing slowly: The wireless radio is on, but it is not connected to a network (it might be trying to connect).
 - Flashing quickly: The printer failed to connect to a network.
- 11 ePrint:** Opens the Web Services menu where you can view and print your printer's email address.
- 12 Apps:** Provides a quick and easy way to access and print information from the Web.
- 13 Auto Answer:** Turns the Auto Answer feature on or off. The recommended setting varies depending on the services and equipment on your phone line.
- 14 Keypad:** Enters fax numbers, values, or text.
- 15 On:** Turns the product on or off. When the product is off, a minimal amount of power is still used. To completely remove power, turn off the product, then unplug the power cord.
- 16 Space:** Enters spaces and pound signs for fax-related tasks.
- 17 Symbols:** Enters symbols and asterisks for fax-related tasks.

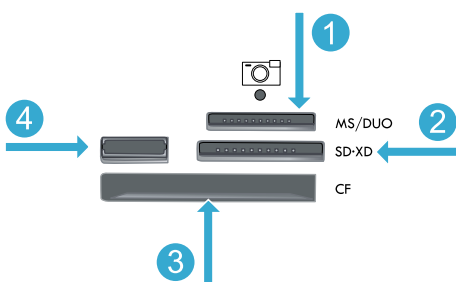
Get to know your HP Photosmart

- 18 Start Fax:** Sends or receives a black-and-white or color fax.
- 19 Start Copy:** Starts a black-and-white or color copy.
- 20 Start Scan:** Opens the Scan Menu where you can select a destination for your scan.
- 21 Print Photos:** Prints the photos selected on your memory card. If no photos are currently selected, the product prints the photo currently showing on the display.
- 22 Cancel:** Stops the current operation.
- 23 Help:** Provides help about the current display.
- 24 Setup:** Opens the Setup menu where you can change product settings and perform maintenance functions.
- 25 2-Sided:** Opens the 2-sided menu where you can change settings to make 2-sided copies and faxes.



To move between icons on the Home screen, use the left and right arrow keys.

- 1 Networking:** Shows the type of network connection (wired or wireless) and the status of the connection.
- 2 Ink level:** Shows the level of ink in the ink cartridges.
- 3 Fax:** Opens the Fax menu for you to send a fax.
- 4 Apps:** Opens the Apps menu for you to access and print information from the Web, without using a computer.
- 5 Copy:** Opens the Copy menu for you to choose color and number of copies.
- 6 Photo:** Opens the Photo menu for you to edit, print, and save photos.
- 7 Scan:** Opens the Scan menu for you to scan to a connected computer or photo memory card.



- 1 Memory Stick**
- 2 MultiMediaCard**
- 3 CompactFlash (CF) types I and II**
- 4 Front USB port:** For digital cameras and removable drives



Print

Print documents and photos

- Use the **Print** menu on the printer display to print documents and photos from software applications on a connected computer.
- Print photos directly from a memory card in various sizes and papers.
- Use the **Photo** menu on the printer display to browse photos, apply automatic fixes, and make selections.
- Print on both sides of the page (two-sided printing).
- Photo Black cartridges and Photo cartridges are interchangeable. Photo Black cartridges were renamed to Photo cartridges to reduce confusion with regular Black cartridges.
- When installing new cartridges, refer to the graphic on the cartridge wrap for instructions. Make sure to remove the plastic wrap and the orange tab before twisting off the orange plastic cap.
- Ink from the cartridges is used in the printing process in several ways, including:
 - Initialization, which prepares the printer and cartridges for printing
 - Printhead servicing, which keeps print nozzles clear and ink flowing smoothly
- Also, some residual ink is left in the cartridge after it is used. For more information, go to: www.hp.com/go/inkusage.



Copy

Copy documents in color or black and white

- Use the **Copy** menu on the printer display to make copies in color or black and white.
- To copy a single page, open the lid and place the original onto the right front corner of the glass, print side down.
- To copy more than one page at a time, place the originals into the document feeder tray, print side up.
- Copy onto both sides of the page (two-sided printing).
- You can copy a photo, but to get the best quality output, use the Reprint feature that is available from the **Scan** menu (Scan and Reprint Photo).



Scan

Scan photos and documents

- Use the **Scan** menu on the printer display to scan to a connected computer. The scanning software will open for you to make adjustments and other selections, including the location of the scan file.
- Save a scan file directly to a memory card or USB flash drive that is attached to the printer.
- To scan a photo and print it, use the **Scan** menu on the printer display, then choose the **Scan and Reprint Photo** option.
- For best scanning, keep the glass and the back of the lid clean. The scanner interprets any spot or mark detected as part of the scan image.



Fax

Fax photos and documents

- Place the original print side down onto the right front corner of the glass. Or, place the original into the document feeder print side up. Use the **Fax** menu on the printer display or press the **Start Fax** button.
- For options, press the **Settings** button. For best faxing, keep the glass and the back of the lid clean. The fax interprets any spot or mark detected as part of the fax image.



ePrint

Print from anywhere

Note: A USB connection by itself won't enable ePrint. To use ePrint, the printer must be connected to the Internet through a router, either wirelessly or via an Ethernet cable. This type of connection is different than a USB connection between the printer and a computer.

HP's free ePrint service provides an easy way to print from email, anywhere and anytime. Just forward an email to your printer's email address from your computer or mobile device, and both the email message and recognized attachments will print.

- Attachments may print differently than they appear in the software program that created them, depending on the original fonts and layout options used.
- Free product updates are provided with this service. Some updates may be required to enable certain functionality.

Your printer is protected

To help prevent unauthorized email, HP assigns a random email address to your printer, never publicizes this address, and by default does not respond to any sender. ePrint also provides industry-standard spam filtering and transforms email and attachments to a print-only format to reduce the threat of a virus or other harmful content.

- The ePrint service does not filter emails based on content, so it cannot prevent objectionable or copyrighted material from being printed.

How to get started with ePrint

To use ePrint, you need to have your printer connected to the Internet.

- Press the **Wireless** button on the HP Photosmart front panel. (Do this even if you have an Ethernet connection.)
- Select the **Web Services** menu from the printer display. From here, you can turn the service on or off, display the printer email address, and print an information page.



Apps

Print from the web, without a computer

Important: A USB connection by itself will not enable Apps. To use Apps, the printer must be connected directly to the Internet through a router, either wirelessly or via an Ethernet cable. This type of connection is different than a USB connection between the printer and a computer. The only exception is the Quick Forms app, which includes several standard forms that are stored on your printer. The printer does not need to be connected to the Internet to print them. If the printer is connected to the Internet, you have access to more Quick Forms as they become available.

- Use the Apps menu to print documents directly from the web, without a computer.
- Print coupons, news articles, puzzles, recipes, coloring pages, crafts, calendars, cards, notebook paper, and more.
- Free product updates are provided with this service. Some updates may be required to enable certain functionality.



ePrintCenter

Use the HP ePrintCenter website

Use HP's free ePrintCenter website to set up increased security for ePrint, specify the email addresses that are allowed to send email to your printer, get more Apps, and access other free services.

- Go to the ePrintCenter website for more information and specific terms and conditions:
www.hp.com/go/ePrintCenter.

Get more info



Get more info

Find more information

Additional product information can be found in the onscreen Help and Readme file that are installed with the HP Photosmart software.

- Onscreen Help includes instructions on product features and troubleshooting. It also provides product specifications, legal notices, environmental, regulatory, and support information, plus links to more information online on the web.
- The Readme file contains HP support contact information, operating system requirements, and the most recent updates to your product information. In Windows, go to **Start > All Programs > HP > Photosmart Prem C410 series > Readme**. For Mac, open the software CD on your desktop, then double-click the Read Me folder located at the top-level of the software CD.

To access the onscreen Help from your computer:

- Windows XP, Vista, Win 7: Click **Start > All Programs > HP > Photosmart Prem C410 series > Help**.
- Mac OS X v10.4: Click **Help > Mac Help, Library > HP Product Help**.
- Mac OS X v10.5 and v10.6: In Finder, click **Help > Mac Help**. In the **Help Viewer**, choose **HP Product Help** from the **Mac Help** pop-up menu.



To find the European Union Regulatory Notice statement and compliance information, go to the onscreen Help, click **Technical information > Regulatory notices > European Union Regulatory Notice**. The Declaration of Conformity for this product is available at the following web address: www.hp.eu/certificates.



Specs

Paper specifications (for detailed specifications, see the onscreen Help.)

- Main input tray capacity: Plain paper sheets: Up to 125 (60 to 90 gsm. (20 lb) paper)
- Output tray capacity: Plain paper sheets: Up to 50 (60 to 90 gsm. (20 lb) paper)
- Photo tray capacity: Photo paper sheets: Up to 20
- Document feeder tray capacity: Plain paper sheets: Up to 50 (60 to 90 gsm. (20 lb) paper)

Physical specifications

- Height: 28.4 cm (11.2 in.)
- Width: 46.8 cm (18.4 in.)
- Depth: 57.7 cm (22.7 in.) with tray extender open; 47.3 cm (18.7 in.) with tray extender closed
- Weight: 10.7 kg (23.6 pounds); 10.2 kg (23.5 pounds) for units sold in Japan

Power specifications

Note: Use this printer only with the power adapter supplied by HP.

- Power adapter: 0957-2259
- Input voltage/frequency: 100 to 240 Vac ~ 1100 mA/50–60 Hz
- Power consumption: 40 watts maximum (average printing)



USB to Wireless



Changing the type of computer connection

Changing your connection from USB to wireless

If you initially set up your printer using a USB connection to your computer, you can switch the connection to a wireless network connection by following these steps.

Windows

To change from USB to wireless connection:

1. Click **Start**, click **All Programs**, click **HP**, click **Photosmart Prem C410 series**, then click **USB to Wireless**. Keep your USB cable connected until prompted to disconnect it.
2. Follow the instructions on the displayed screens.
 - Click **Next** to move from one screen to the next.
 - Click **Help** to get additional information about what is required on that screen.

Mac

To change from USB to wireless connection:

1. On the HP Photosmart front panel, press the **Wireless** button to display the **Wireless** menu on the printer display.
2. Select **Wireless Settings**, then **Wireless Setup Wizard** on the display.
3. Follow the steps in the Wireless Setup Wizard to connect the printer.
4. To add the printer, go to **System Preferences**, select **Print & Fax**, then click the **+** button. Select your printer from the list.



USB to Wired



Changing your connection from USB to wired (Ethernet)

If you initially set up your printer using a USB connection to your computer, you can switch the connection to a wired (Ethernet) network connection. In the onscreen Help, see **Finish setting up the HP Photosmart > Add the HP Photosmart to a network > Wired (Ethernet) network**.

If your printer is not found during software installation...

Troubleshooting for a wireless printer setup

Check that your printer is connected to your network

Run a **Wireless Network Test** to check that your printer is on the network. To do this:

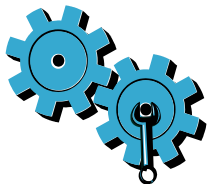
1. On the HP Photosmart front panel, press the **Wireless** button to display the **Wireless** menu on the printer display.
2. Select **Run Wireless Network Test** on the display.
3. The **Wireless Network Test Report** is automatically printed.
 - Check the top of the report to see if something failed during the test.
 - See the Diagnostics Summary for all tests that were performed, and whether or not your printer passed.
 - Find out the Network Name (SSID), Hardware Address (MAC), and IP Address. See the Configuration Summary for these details.

If your printer is not connected to the network:

1. Press the **Wireless** button to open the **Wireless** menu on the printer display. Select **Wireless Settings**, then **Wireless Setup Wizard** on the display.
2. Follow the instructions on the screen.

For additional help with setting up a wireless connection, go to the Wireless Printing Center site: www.hp.com/go/wirelessprinting.

Fixing connectivity issues



Run a **Wireless Network Test** to check diagnostic and configuration information. To do this:

1. On the HP Photosmart front panel, press the **Wireless** button to display the **Wireless** menu on the printer display.
2. Select **Run Wireless Network Test** on the display.
3. The **Wireless Network Test** Report is automatically printed.

You may have picked the wrong network or typed in your network name (SSID) incorrectly

- Check these settings to ensure that they are correct.

You may have typed in your wireless password (WPA passphrase or WEP key) incorrectly.

- If you are using a wireless password on your network, you'll need to enter either a WPA passphrase or WEP key. These are case-sensitive so be sure that it has been entered correctly.
- If the network name and the wireless password are not found automatically during installation, and you don't already know them, you can download the Network Diagnostic Utility, which can help you locate them.
- The Network Diagnostic Utility runs on computers with Windows XP SP3, Vista, or Windows 7 OS. The computer should also be wirelessly connected to your network. To download the Network Diagnostic Utility, go to: www.hp.com/go/wirelessprinting.

You may have a router problem.

- Try restarting both the printer and the router by turning off the power on each. Then, turn them on again.

Your computer may not be connected to your network.

- Make sure that the computer is connect to the same network to which the HP Photosmart is connected.

Your computer may be connected to a Virtual Private Network (VPN)

- Temporarily disconnect from the VPN before proceeding with the installation. Being connected to a VPN is like being on a different network. You will need to disconnect from the VPN to access the printer over the home network.

Security software may be blocking communication.

- Security software (firewall, anti-virus, anti-spyware) installed on your computer may be blocking communication between the printer and the computer. An HP diagnostic utility runs automatically during installation and can provide messages about what might be blocked by a firewall. Try temporarily disconnecting your firewall, anti-virus, or anti-spyware applications to see if you can finish the installation successfully. You should re-enable the security applications after installation is complete.
- Setup your firewall software to allow communication over UDP port 427 (Windows).

After software installation

If your printer has been successfully installed, but you are having trouble printing:

- Turn off the router, printer, and computer. Then, turn on router, printer, and computer - in that order.
- If powering down and up doesn't solve the problem, run the **Network Diagnostic Utility (Windows)**:
 - Go to: www.hp.com/go/wirelessprinting to download the Network Diagnostic Utility, then run it.

HP printer limited warranty statement

HP product	Duration of limited warranty
Software Media	90 days
Printer	1 year
Print or Ink cartridges	Until the HP ink is depleted or the "end of warranty" date printed on the cartridge has been reached, whichever occurs first. This warranty does not cover HP ink products that have been refilled, remanufactured, refurbished, misused, or tampered with.
Printheads (only applies to products with customer replaceable printheads)	1 year
Accessories	90 days

A. Extent of limited warranty

1. Hewlett-Packard (HP) warrants to the end-user customer that the HP products specified above will be free from defects in materials and workmanship for the duration specified above, which duration begins on the date of purchase by the customer.
2. For software products, HP's limited warranty applies only to a failure to execute programming instructions. HP does not warrant that the operation of any product will be interrupted or error free.
3. HP's limited warranty covers only those defects that arise as a result of normal use of the product, and does not cover any other problems, including those that arise as a result of:
 - a. Improper maintenance or modification;
 - b. Software, media, parts, or supplies not provided or supported by HP;
 - c. Operation outside the product's specifications;
 - d. Unauthorized modification or misuse.
4. For HP printer products, the use of a non-HP cartridge or a refilled cartridge does not affect either the warranty to the customer or any HP support contract with the customer. However, if printer failure or damage is attributable to the use of a non-HP or refilled ink cartridge, HP will charge its standard time and materials charges to service the printer for the particular failure or damage.
5. If HP receives, during the applicable warranty period, notice of a defect in any product which is covered by HP's warranty, HP shall either repair or replace the product, at HP's option.
6. If HP is unable to repair or replace, as applicable, a defective product which is covered by HP's warranty, HP shall, within a reasonable time after being notified of the defect, refund the purchase price for the product.
7. HP shall have no obligation to repair, replace, or refund until the customer returns the defective product to HP.
8. Any replacement product may be either new or like-new, provided that it has functionality at least equal to that of the product being replaced.
9. HP products may contain remanufactured parts, components, or materials equivalent to new in performance.
10. HP's Limited Warranty Statement is valid in any country where the covered HP product is distributed by HP. Contracts for additional warranty services, such as on-site service, may be available from any authorized HP service facility in countries where the product is distributed by HP or by an authorized importer.

B. Limitations of warranty

TO THE EXTENT ALLOWED BY LOCAL LAW, NEITHER HP NOR ITS THIRD PARTY SUPPLIERS MAKES ANY OTHER WARRANTY OR CONDITION OF ANY KIND, WHETHER EXPRESS OR IMPLIED WARRANTIES OR CONDITIONS OF MERCHANTABILITY, SATISFACTORY QUALITY, AND FITNESS FOR A PARTICULAR PURPOSE.

C. Limitations of liability

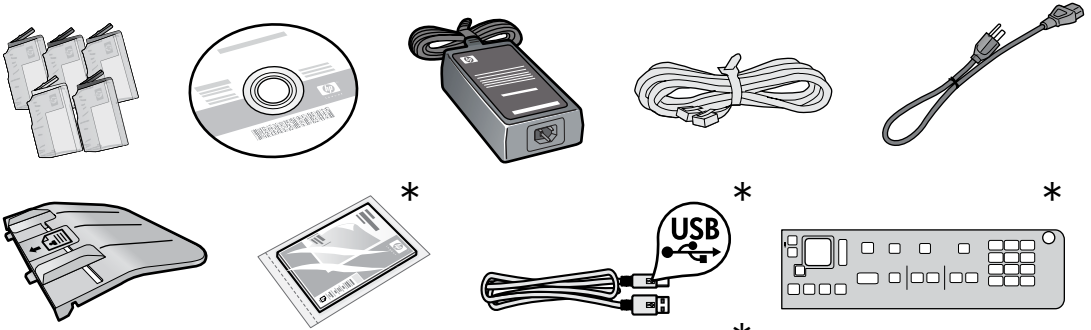
1. To the extent allowed by local law, the remedies provided in this Warranty Statement are the customer's sole and exclusive remedies.
2. TO THE EXTENT ALLOWED BY LOCAL LAW, EXCEPT FOR THE OBLIGATIONS SPECIFICALLY SET FORTH IN THIS WARRANTY STATEMENT, IN NO EVENT SHALL HP OR ITS THIRD PARTY SUPPLIERS BE LIABLE FOR DIRECT, INDIRECT, SPECIAL, INCIDENTAL, OR CONSEQUENTIAL DAMAGES, WHETHER BASED ON CONTRACT, TORT, OR ANY OTHER LEGAL THEORY AND WHETHER ADVISED OF THE POSSIBILITY OF SUCH DAMAGES.

D. Local law

1. This Warranty Statement gives the customer specific legal rights. The customer may also have other rights which vary from state to state in the United States, from province to province in Canada, and from country to country elsewhere in the world.
2. To the extent that this Warranty Statement is inconsistent with local law, this Warranty Statement shall be deemed modified to be consistent with such local law. Under such local law, certain disclaimers and limitations of this Warranty Statement may not apply to the customer. For example, some states in the United States, as well as some governments outside the United States (including provinces in Canada), may:
 - a. Preclude the disclaimers and limitations in this Warranty Statement from limiting the statutory rights of a consumer (e.g., the United Kingdom);
 - b. Otherwise restrict the ability of a manufacturer to enforce such disclaimers or limitations; or
 - c. Grant the customer additional warranty rights, specify the duration of implied warranties which the manufacturer cannot disclaim, or allow limitations on the duration of implied warranties.
3. THE TERMS IN THIS WARRANTY STATEMENT, EXCEPT TO THE EXTENT LAWFULLY PERMITTED, DO NOT EXCLUDE, RESTRICT, OR MODIFY, AND ARE IN ADDITION TO, THE MANDATORY STATUTORY RIGHTS APPLICABLE TO THE SALE OF THE HP PRODUCTS TO SUCH CUSTOMERS.

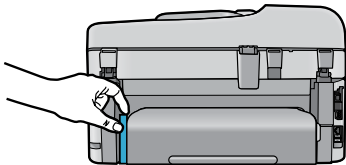
从此处开始设置...

1 检查箱内物品

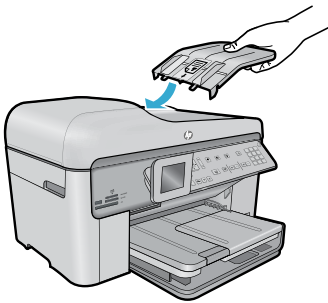


* 不是所有型号都提供

2 打开打印机包装。除去所有胶带、保护膜和包装材料。

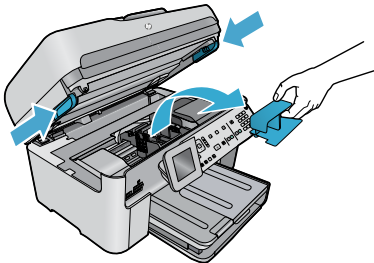


除去保护两端打印配件的硬纸板（如果存在）



安装自动送纸器托盘

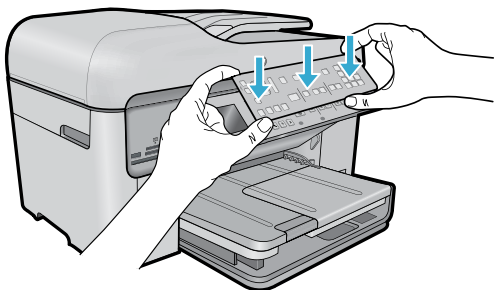
1. 从打印机顶部取出硬纸板固定物。
2. 安装自动送纸器托盘，将两边的卡口与打印机中的插槽对齐。将卡口插入插槽，直到它们咬合到位。



除去打印头固定件

1. 向上拉打印机两侧把手打开墨盒检修门。
 - 如果扫描仪盖已开启，则无法打开墨盒检修门。
2. 除去连接在桔黄色固定件上的蓝色胶带。
3. 向左滑动打印头。
4. 除去打印头上的桔黄色塑料固定件。
5. 关闭墨盒检修门。

3 安装覆盖板（如果包含）




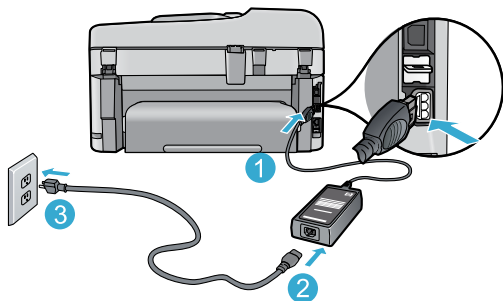
安装覆盖板

如果需要在控制面板上安装覆盖板：

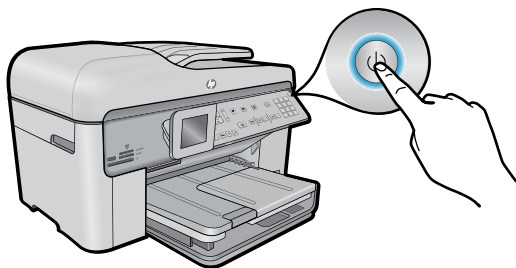
1. 向上拉右边除去现有覆盖板。
2. 将新覆盖板放到控制面板上的按钮上方。
3. 用力按下覆盖板的各边直到它咬合到位。

4 连接并通电

 请勿连接 USB 连接线，除非软件提示您这么做！（仅限 Windows®）



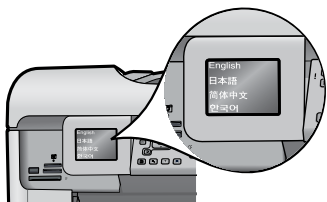
连接电源线和适配器。



按下  启动 HP Photosmart。


5 按照打印机显示屏上的设置向导进行操作

请确保按照显示屏上的说明操作，它将指导您完成 HP Photosmart 的设置和连接，包括安装墨盒和软件。



如果计算机没有 CD/DVD 驱动器，请转至 www.hp.com/support 下载并安装软件。

WiFi 保护设置 (WPS) – (可选)

此 HP Photosmart 支持 WiFi 保护设置 (WPS)  只需轻松按下一个按钮即可进行无线设置。


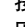
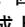
- 设置期间，如果显示屏上提示进行 WiFi 保护设置 (WPS)，并且您的路由器支持该方法，请按路由器上的 WPS 按钮。如果连接成功，那么“无线”按钮上的无线指示灯将亮起。
- 或者，您可以按照打印机显示屏上的“设置”向导使用另一种无线设置方法连接。

注册您的 HP Photosmart

通过在 www.register.hp.com 上注册可获得更快的服务和支 持警报。

设置疑难排解

如果无法开启 HP Photosmart...

1. 检查电源线。
 - 确保电源线牢固地连接到打印机和电源适配器。如果电源线连接正常，那么电源指示灯将亮起。
 - 如果使用电源插线板，请确保该插线板的开关已打开。或者将打印机直接插入电源插座。
 - 测试电源插座，确保它正在正常工作。插上另一台可正常工作的设备，查看是否有电。如果没电，则电源插座可能有问题。
 - 如果将打印机插入到带开关的插座中，请确保该插座开关已打开。
2. 关闭打印机，然后拔下电源线。重新插上电源线，然后按  按钮打开打印机。
3. 请注意：按下  按钮时不要太快。只需按一下该按钮。可能需要经过几分钟时间才能开启打印机。因此如果多次按下  按钮，可能会关闭打印机。
4. 如果完成上述所有操作后问题仍然存在，请联系 HP 支持部门进行维修。转至 www.hp.com/support。

如果无法打印...

Windows

确保将 HP Photosmart 设置为默认打印机并且未脱机。为此，请执行以下操作：

- 在 Windows 任务栏上，单击开始。
- 然后单击控制面板。
- 然后打开：
 - 设备和打印机 (Windows 7)
 - 打印机 (Vista)
 - 打印机和传真机 (XP)

查看打印机，检查其旁边是否有一个带钩号的圆圈。如果没有该标记，请右键单击打印机图标，并从菜单中选择设置为默认打印机。

要确认打印机未处于脱机状态，请右键单击打印机图标，并确保脱机使用打印机和暂停打印未选中。

如果您仍无法打印，或 Windows 软件安装失败，请执行以下操作：

1. 从计算机的 CD 驱动器中取出 CD，然后断开打印机与计算机之间的连接。
2. 重新启动计算机。
3. 临时禁用所有软件防火墙并关闭所有反病毒软件。
4. 将打印机软件 CD 插入计算机的 CD 驱动器，然后按照屏幕说明安装打印机软件。请勿在没有提示的情况下连接 USB 连接线。
5. 安装完成后，重新启动计算机以及您禁用或关闭的任何安全软件。

Mac

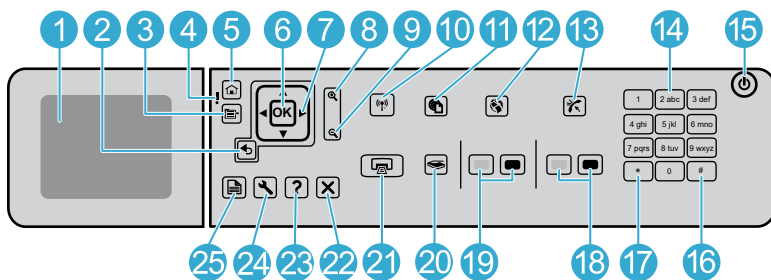
如果无法打印，请卸载并重新安装软件。卸载程序会删除所有特定于此 HP Photosmart 的 HP 软件组件。但卸载程序不会删除由其他打印机或程序共享的任何组件。

要卸载软件，请执行以下操作：

1. 断开打印机与计算机的连接。
2. 打开 Applications: Hewlett-Packard 文件夹。
3. 双击 **HP Uninstaller**。按照屏幕上的说明操作。

要安装软件，请执行以下操作：

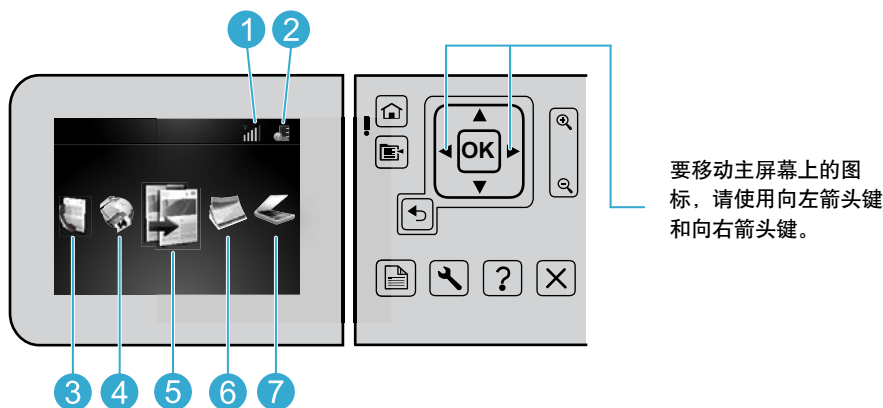
1. 将 CD 插入计算机的 CD 驱动器。
2. 在桌面上打开 CD，然后双击 HP Installer。
3. 按照屏幕上的说明操作。



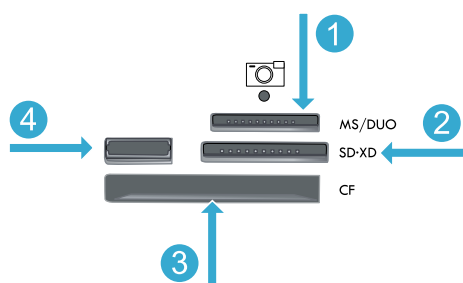
- 1 彩色图形显示屏（也称为显示屏）：**显示菜单、照片和信息。可将显示屏立起来以一定角度放置，以实现更佳视觉效果。
- 2 后退：**返回到上一个屏幕。
- 3 菜单：**显示一组与当前显示内容有关的选项。
- 4 警示灯：**表示出现了问题。有关详细信息，请参阅显示屏。
- 5 主屏幕：**返回主屏幕（打开产品时的默认屏幕）。
- 6 OK：**选择一个菜单设置、值或照片。
- 7 方向键盘：**通过照片和菜单选项导航。
- 8 放大：**放大照片。打印前使用此按钮和方向键盘上的箭头裁切照片。
- 9 缩小：**缩小以显示照片的更多部分。
- 10 无线按钮和指示灯：**打开“网络”菜单，该菜单可用于访问“无线设置”向导和 Wi-Fi 保护设置。无线指示灯指示连接状态：
 - 关闭：无线广播已关闭。
 - 亮起（不闪烁）：无线广播已开启，打印机已连接到网络。
 - 缓慢闪烁：无线广播已开启，但尚未连接到网络（可能正在尝试连接）。
 - 快速闪烁：打印机未能连接到网络。
- 11 ePrint：**打开 Web Services 菜单，该菜单可用于查看和打印打印机的电子邮件地址。
- 12 Apps：**提供访问和打印 Web 信息的快捷方法。
- 13 自动应答：**打开或关闭“自动应答”功能。推荐设置取决于电话线上的服务和设备情况。
- 14 小键盘：**输入传真号、值或文本。
- 15 打开：**打开或关闭产品。关闭产品后，仍会消耗少量电力。要完全切断电源，请关闭产品，然后拔掉电源线。
- 16 空格键：**在执行与传真相关的任务时，用于输入空格和井号（#）。
- 17 符号键：**在执行与传真相关的任务时，用于输入符号和星号（*）。

HP Photosmart 入门

- 18 **开始传真：** 发送或接收黑白或彩色传真。
- 19 **开始复印：** 开始进行黑白或彩色复印。
- 20 **开始扫描：** 打开“扫描菜单”，可以在这里选择扫描目的地。
- 21 **打印照片：** 打印在存储卡上选中的照片。如果当前没有选择照片，则产品将打印当前显示的照片。
- 22 **取消：** 停止当前操作。
- 23 **帮助：** 提供关于当前显示的帮助。
- 24 **设置：** 打开“设置”菜单，您可在此菜单中更改产品设置并执行维护功能。
- 25 **双面：** 打开双面菜单，可以在这里更改设置制作双面副本和传真。



- 1 **联网：** 显示网络连接的类型（有线或无线）和连接状态。
- 2 **墨水量：** 显示墨盒中的墨水量。
- 3 **传真：** 打开“传真”菜单以便发送传真。
- 4 **Apps：** 打开 Apps 菜单以便访问和打印 Web 信息，而无需使用计算机。
- 5 **复印：** 打开“复印”菜单，在此菜单中可以选择颜色和复印份数。
- 6 **照片：** 打开“照片”菜单，在此菜单中可以编辑、打印和保存照片。
- 7 **扫描：** 打开“扫描”菜单，在此菜单中可以扫描至连接的计算机或照片存储卡。



- 1 **Memory Stick**
- 2 **MultiMediaCard**
- 3 **CompactFlash (CF) I 型和 II 型**
- 4 **正面 USB 端口：** 针对数码相机和可移动驱动器



打印

打印文档和照片

- 使用打印机显示屏上的打印菜单，可通过已连接计算机上的软件应用程序打印文档和照片。
- 直接从存储卡在各种纸张上打印各种尺寸的照片。
- 使用打印机显示屏上的照片菜单可浏览照片、自动修片和进行选择。
- 在页面的正反面打印（双面打印）。
- 照片黑色墨盒和照片墨盒可互换。照片黑色墨盒重命名为照片墨盒，以避免与常规黑色墨盒发生混淆。
- 安装新墨盒时，请参考墨盒包装上的图片获取相关说明。请先除去塑料包装和桔黄色的拉环再拧下桔黄色的塑料盖。
- 打印过程中通过以下方法使用墨盒中的墨水：
 - 初始化，用于为打印准备好打印机和墨盒
 - 打印头维护，用于保持打印喷嘴清洁和墨水畅通无阻
- 当墨盒用完后，墨盒中还会残留一些墨水。有关详细信息，请访问：www.hp.com/go/inkusage。



复印

用彩色或黑白复印文档

- 使用打印机显示屏上的复印菜单可以进行彩色或黑白复印。
- 要复印单个页面，请抬起衬板并将原件打印面朝下放在玻璃板的右上角。
- 要同时复印多个页面，请将原件打印面朝上放在自动送纸器托盘中。
- 在页面的正反面复印（双面打印）。
- 您可以复印照片，但为了获得最佳画质，请使用扫描菜单中的“重新打印”功能（扫描并重新打印照片）。



扫描

扫描照片和文档

- 使用打印机显示屏上的扫描菜单可扫描至连接的计算机。将打开扫描软件以进行调整和其他选择，包括扫描文件的位置。
- 直接将扫描文件保存到连接到打印机的存储卡或 USB 闪存硬盘。
- 要扫描照片或打印照片，请使用打印机显示屏上的扫描菜单，然后选择扫描并重新打印照片选项。
- 为获得最佳扫描效果，请保持玻璃板和衬板背面清洁。扫描仪会将检测到的任何斑点或痕迹视作扫描图像的一部分。



传真

传真照片和文档

- 将原件打印面朝下放到玻璃板的右上角。或者将原件打印面朝上放入送纸器内。使用打印机显示屏上的传真菜单或按开始传真按钮。
- 要访问选项，请按设置按钮。为获得最佳传真效果，请保持玻璃板和衬板背面清洁。传真机会将检测到的任何斑点或痕迹视作传真图像的一部分。



ePrint

随时随地打印

注意：仅凭 USB 连接将不会启用 ePrint。要使用 ePrint，必须以无线或用 Ethernet 电缆通过路由器将打印机连接到 Internet。这种连接与打印机和计算机之间的 USB 连接不同。

HP 的免费 ePrint 服务提供从电子邮件随时随地打印的便捷方法。只要将电子邮件从计算机或移动设备转发到打印机的电子邮件地址，就会打印电子邮件消息和认可的附件。

- 附件的打印输出可能与创建它们的软件程序中显示的内容不一样，具体取决于使用的原始字体和布局选项。
- 免费产品更新由此服务提供。某些更新对于启用特定功能是必需的。

您的打印机受保护

为帮助阻止未经授权电子邮件，HP 为打印机指定随机的电子邮件地址，请千万不要公布该地址，并且默认情况下不会对任何发件人作出响应。ePrint 还提供了行业标准的垃圾邮件过滤功能并仅以打印格式传输电子邮件和附件，以减少病毒或其他有害内容的危险。

- ePrint 服务不会根据内容过滤电子邮件，因此它不能阻止打印令人厌恶的资料或受版权保护的资料。

ePrint 入门

要使用 ePrint，您需要将打印机连接到 Internet。

- 按下 HP Photosmart 前面板上的**无线**按钮。（即使您已拥有 Ethernet 连接，也要执行此操作。）
- 从打印机显示屏中选择 **Web Service** 菜单。从此处，您可以开启或关闭该服务、显示打印机电子邮件地址以及打印信息页面。



Apps

不使用计算机直接从 Web 进行打印

重要信息：仅凭 USB 连接将不会启用 Apps。要使用 Apps，必须以无线或用 Ethernet 电缆通过路由器将打印机直接连接到 Internet。这种连接与打印机和计算机之间的 USB 连接不同。唯一的例外是 Quick Forms 应用程序，该应用程序包含多个存储在打印机上的标准表单。打印机无需连接到 Internet 就能打印这些表单。如果打印机已连接到 Internet，那么当更多 Quick Forms 变为可用时，您可以访问更多的 Quick Forms。

- 使用 Apps 菜单可直接从 Web 打印文档而无需连接计算机。
- 打印优惠券、网络新闻稿、拼图游戏、食谱、彩页、手工艺品、日历、卡片以及笔记本纸等。
- 免费产品更新由此服务提供。某些更新对于启用特定功能是必需的。



ePrintCenter

使用 HP ePrintCenter Web 站点

使用 HP 的免费 ePrintCenter 网站设置 ePrint 的增强安全性、指定可用于向打印机发送电子邮件的电子邮件地址、获取更多应用程序以及访问其他免费服务。

- 转至 ePrintCenter Web 站点获取更多信息和特定条款和条件：
www.hp.com/go/ePrintCenter。

获得更多信息



获得更多信息

查找更多信息

可以在随 HP Photosmart 软件一起安装的屏幕帮助和自述文件中找到更多产品信息。

- 屏幕帮助包括有关产品功能和疑难排解的说明。它还包含产品规格、法律声明、环境、法规、支持信息以及指向 Web 上更多在线信息的链接。
- 自述文件包含 HP 支持联系信息、操作系统要求和产品信息的最新更新。在 Windows 中，单击开始 > 所有程序 > HP > Photosmart Prem C410 series > 自述文件。对于 Mac，打开桌面上的软件 CD，然后双击软件 CD 根目录中的 Read Me 文件夹。

要从计算机访问屏幕帮助，请执行以下操作：

- Windows XP、Vista 和 Win 7：单击开始 > 所有程序 > HP > Photosmart Prem C410 series > 帮助。
- Mac OS X v10.4：单击帮助 > Mac 帮助，资料库 > HP 产品帮助。
- Mac OS X v10.5 和 v10.6：从查找程序中，单击帮助 > Mac 帮助。在帮助查看程序中，从 Mac 帮助弹出式菜单中选择 HP 产品帮助。



要查找“欧盟法规声明”（European Union Regulatory Notice）声明和一致性信息，请转至屏幕帮助，单击技术信息 > 法规声明 > 欧盟法规声明。关于此产品的符合性声明，可从以下网址获得：www.hp.eu/certificates。



规格

纸张规格（关于详细规格，请参阅屏幕帮助。）

- 主进纸盒容量：普通纸：最多 125 张（60 至 90 克/平方米（20 磅）纸）
- 出纸盒容量：普通纸：最多 50 张（60 至 90 克/平方米（20 磅）纸）
- 照片纸盒容量：照片纸：最多 20 张
- 自动送纸器托盘容量：普通纸：最多 50 张（60 至 90 克/平方米（20 磅）纸）

物理规格

- 高度：28.4 厘米（11.2 英寸）
- 宽度：46.8 厘米（18.4 英寸）
- 深度：纸盒延长板打开时，深度为 57.7 厘米（22.7 英寸）；纸盒延长板关闭时，深度为 47.3 厘米（18.7 英寸）
- 重量：10.7 千克（23.6 磅）；10.2 千克（22.5 磅）（在日本出售的部件）

电源规格

注意：此打印机仅使用 HP 提供的电源适配器。

- 电源适配器：0957-2259
- 输入电压/频率：直流电 100 - 240 伏 ~ 1100 毫安/50-60 赫兹
- 功耗：最大 40 W（普通打印）

设置和使用网络打印机

更改计算机连接类型



将连接从 USB 更改为无线

如果最初使用计算机的 USB 连接设置打印机，那么可以按以下步骤将连接切换为无线网络连接：

USB 到无线



Windows

要从 USB 连接更改为无线连接，请执行以下操作：

1. 单击开始，单击所有程序，单击 HP，单击 **Photosmart Prem C410 series**，然后单击 **USB 到无线**。使 USB 连接线保持连接，直到提示您断开该连接。
2. 按照屏幕上显示的说明操作。
 - 单击下一步从一个屏幕移到下一个屏幕。
 - 单击帮助获取有关该屏幕上所需操作的更多信息。

Mac

要从 USB 连接更改为无线连接，请执行以下操作：

1. 在 HP Photosmart 前面板上，按**无线**按钮在打印机显示屏上显示**无线**菜单。
2. 选择**无线设置**，然后在显示屏上选择**无线设置向导**。
3. 按照“无线设置向导”中的步骤连接打印机。
4. 要添加打印机，请转至系统首选项，选择**打印和传真**，然后单击 **+** 按钮。从列表中选择打印机。



USB 到有线

将连接从 USB 更改为有线 (Ethernet)

如果最初使用计算机的 USB 连接设置打印机，那么可以将该连接切换为有线 (Ethernet) 网络连接。在屏幕帮助中，参阅完成对 HP Photosmart 的设置 > 将 HP Photosmart 添加到网络 > 有线 (Ethernet) 网络。



如果安装软件期间找不到打印机...

无线打印机设置疑难排解

检查您的打印机是否已连接到网络

运行**无线网络测试**以检查打印机是否在网络上。为此，请执行以下操作：

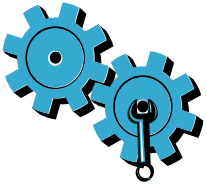
1. 在 HP Photosmart 前面板上，按**无线**按钮以在打印机显示屏上显示**无线**菜单。
2. 在显示屏上选择**运行无线网络测试**。
3. 将自动打印**无线网络测试报告**。
 - 检查报告顶部以查看测试过程中是否出错。
 - 请参阅“诊断摘要”了解执行的所有测试以及打印机是否通过测试。
 - 找出网络名称 (SSID)、硬件地址 (MAC) 和 IP 地址。请参阅“配置摘要”了解这些详细信息。

如果您的打印机未连接到网络：

1. 按**无线**按钮以打开打印机显示屏上的**无线**菜单。选择**无线设置**，然后选择显示屏上的**无线设置向导**。
2. 按照屏幕上的说明操作。

关于设置**无线**连接的更多帮助，请转至 Wireless Printing Center 站点：

www.hp.com/go/wirelessprinting。



运行**无线网络测试**检查诊断和配置信息。为此，请执行以下操作：

1. 在 HP Photosmart 前面板上，按**无线按钮**以在打印机显示屏上显示**无线菜单**。
2. 在显示屏上选择**运行无线网络测试**。
3. 将自动打印**无线网络测试报告**。

您可能选择了错误的网络或输入了不正确的网络名称 (SSID)。

- 检查这些设置以确保正确无误。

您可能输入了不正确的无线密码 (WPA 密码或 WEP 密钥)。

- 如果要在网络上使用无线密码，您将需要输入 WPA 密码或 WEP 密钥。这些密码和密钥区分大小写，因此请务必正确输入它们。
- 如果安装期间未自动找到网络名称和无线密码，并且您还不知道它们，那么您可以下载网络诊断实用程序，该程序可帮助您找到网络名称和无线密码。
- 网络诊断实用程序运行在安装有 Windows XP SP3、Vista 或 Windows 7 操作系统的计算机上。您的计算机也应该无线连接到网络。要下载网络诊断实用程序，请转至：www.hp.com/go/wirelessprinting。

路由器可能存在问题。

- 通过关闭电源尝试重新启动打印机和路由器。然后再次运行它们。

您的计算机可能没有连接到网络。

- 确保将计算机与 HP Photosmart 连接到同一网络。

您的计算机可能已连接到虚拟专用网络 (VPN)

- 继续安装前临时断开与 VPN 的连接。连接到 VPN 如同位于其他网络上。您将需要断开与 VPN 的连接才能访问主网络上的打印机。

安全软件可能会阻止通信。

- 计算机上安装的安全软件（防火墙、反病毒和反间谍）可能会阻止打印机和计算机之间的通信。HP 诊断实用程序在安装期间将自动运行并提供有关防火墙可能阻止的内容的信息。请尝试临时断开与防火墙、反病毒或反间谍应用程序的连接以查看是否可成功完成安装。安装完成后，应重新启用安全应用程序。
- 设置防火墙软件以允许在 UDP 端口 427 上进行通信 (Windows)。

安装软件后

如果成功安装了打印机，但无法打印：

- 关闭路由器、打印机和计算机。然后，按关闭顺序依次打开路由器、打印机和计算机。
- 如果断电并重新通电无法解决该问题，请运行**网络诊断实用程序 (Windows)**：
 - 请转至：www.hp.com/go/wirelessprinting 下载网络诊断实用程序，然后运行该程序。

HP 打印机有限保修声明

HP 产品	有限保修期限
软件媒体	90 天
打印机	1 年
打印或墨盒	直到 HP 墨水用完，或到达印在墨盒上的“保修结束”日期，视何者为先。本保修不涵盖重新灌注、再加工、整修、误用，或被擅改的 HP 墨水产品。
打印头（仅适用于其打印头可供客户更换的产品）	1 年
附件	90 天

A. 有限保修的范围

1. 惠普 (HP) 向最终用户保证，在上述指定的保修期内，上述指定的 HP 产品自购买之日起无材料及工艺上的缺陷。
2. 对于软件产品，HP 的有限保修仅适用于无法执行编程指令的故障。HP 不保证产品工作时不会中断或无错误。
3. HP 的有限保修仅限于由正常使用产品而产生的缺陷，不适用于任何其他问题，包括因以下原因而产生的问题：
 - a. 不正确的维护或调整；
 - b. 使用非 HP 提供或支持的软件、介质、部件或耗材；
 - c. 在产品技术规格以外的条件下操作；
 - d. 未经授权的调整或误用。
4. 对于 HP 打印机产品，使用非 HP 墨盒或重新灌注的墨盒既不影响对客户的保修也不影响与客户签订的任何 HP 支持合同。但是，如果打印机由于使用非 HP 墨盒或重新灌注的墨盒或过期的墨盒而发生故障或损坏，HP 在维修打印机时将根据具体故障或损坏，收取标准工时费和材料费。
5. 如果 HP 在适用的保修期内收到符合 HP 保修条件的任何产品的缺陷的通知，HP 将自行决定对有缺陷的产品进行维修或更换。
6. 如果 HP 无法适时维修或更换符合 HP 保修条件的有缺陷产品，HP 将在接到缺陷通知后的合理时间内，退回该产品的全额货款。
7. 在客户将有缺陷的产品退回 HP 之前，HP 不承担维修、更换或退款的义务。
8. 更换的产品可能为全新产品或相当于全新产品，前提是它的功能至少与被更换的产品相当。
9. HP 产品可能包含性能等同于新部件的再加工部件、组件或材料。
10. HP 的有限保修在任何销售保修范围内的 HP 产品的国家或地区均有效。可与授权的 HP 服务机构签订其他保修服务（如现场服务）合同，这些机构分布在由 HP 或授权进口商销售 HP 产品的国家/地区。

B. 有限保修

在当地法律允许范围内，HP 及其第三方供应商，对有关 HP 的产品，无论是以明示或默示的形式，均没有任何其他保修或条件并特别声明没有任何用于特定目的适销性、质量满意度以及适用性的默示保修或条件。

C. 责任限制

1. 在当地法规允许的范围内，本保修声明中提供的补偿是对用户的唯一补偿。
2. 在当地法规允许的范围内，除了本保修声明中特别规定的责任外，在任何情况下，无论是根据合同、民事侵权行为或其他法律准则，无论是否告知产生此类损失的可能性，HP 或其第三方供应商对直接、特殊、偶发、继发的损失概不承担责任。

D. 当地法律

1. 此保修声明赋予用户特定的法律权利。用户还可能拥有其他权利，具体情况视州（美国）、省（加拿大）及国家/地区（世界其他地方）而异。
2. 如果本保修声明与当地法规发生矛盾，则应视为已修改以便与当地法规保持一致。根据这类当地法规，本保修声明中的某些责任免除和限制可能不适用于用户。例如，美国的某些州及美国以外的某些政府（包括加拿大的某些省），可能会：
 - a. 排除本保修声明中的责任免除和限制条款对用户法定权利的限制（例如英国）；
 - b. 限制制造商实施这种责任免除或限制的能力；或者
 - c. 赋予客户附加的保修权利，指定默示保修的期限（对这种默示保修制造商不得拒绝），或者不允许制造商对默示保修的期限加以限制。
3. 除非另有法律许可，本声明中的保修条款不得排除、限制或修改适用于此产品销售的强制性法律权利，而是对该权利的补充。

