



## English

**IMPORTANT:** Follow these part replacement instructions:

- 1 Match the part you received to the illustration on the next page.
- 2 Go to the page number indicated (→ #) for that part.
- 3 Complete only the part replacement steps in that section.

### WARNING:

- **Keep your hands away from the moving fan.**
- **Keep fingers and tools clear of the fan when power is applied.**
- **Never open the cover with the power cord attached or power applied. You may damage your computer or be injured from the spinning fan blades.**
- **Avoid touching sharp edges inside the computer.**

**CAUTION:** This product contains components that are easily damaged by electrostatic discharge (ESD). To reduce the chance of ESD damage, work over a non-carpeted floor, use a static dissipative work surface (like a conductive foam pad), and wear an ESD wrist strap that is connected to a grounded surface, like the metal frame of the computer.

**IMPORTANT:** A hard disk drive is extremely sensitive to shock and impact. Do not bang or drop it. Do not touch the circuit board. Static electricity can damage the drive.

**NOTE:** Computer features may vary by model.

## Español

**IMPORTANTE:** Siga estas instrucciones para el reemplazo de piezas:

- 1 Compare la pieza que usted recibió con l'illustración en la página siguiente.
- 2 Vaya al número de la página indicada (→ #) para esa pieza.
- 3 Ejecute solamente los pasos para el reemplazo de la pieza en esa sección.

### ADVERTENCIA:

- **Mantenga sus manos alejadas del ventilador en funcionamiento.**
- **Mantenga los dedos y las herramientas lejos del ventilador cuando lo encienda.**
- **Nunca abra la cubierta cuando el cable de alimentación esté conectado o el ventilador esté encendido. Puede dañarlo o lastimarse con las aspas en movimiento del ventilador.**
- **Evite tocar los bordes filosos ubicados en el interior del equipo.**

**PRECAUCIÓN:** Este producto contiene componentes que se pueden dañar con facilidad si se someten a descargas electrostáticas (ESD). Para reducir las posibilidades de daños por ESD, trabaje sobre un piso no alfombrado, utilice una superficie de trabajo estática disipativa (como una goma espuma conductora) y use una muñequera contra ESD que esté conectada a una superficie con conexión a tierra, como el marco de metal de su equipo.

**IMPORTANTE:** La unidad de disco duro es extremadamente sensible a los golpes. No la golpee ni la deje caer. No toque la tarjeta de circuito. La electricidad estática puede dañar la unidad.

**NOTA:** Las características del equipo pueden variar según el modelo.

## Português

**IMPORTANTE:** Siga estas instruções sobre substituição de peças:

- 1 Compare a peça que você recebeu com a ilustração na próxima página.
- 2 Vá para o número da página indicada (→ #) para esta peça.
- 3 Conclua apenas as etapas de substituição de peças nesta sessão.

### AVISO:

- **Mantenha suas mãos longe do ventilador.**
- **Mantenha os dedos e ferramentas longe do ventilador quando o mesmo estiver ligado.**
- **Nunca abra a tampa com o fio de alimentação conectado ou quando estiver ligado. Você pode danificar seu computador ou se machucar com as lâminas do ventilados.**
- **Evite tocar em bordas pontiagudas dentro do computador.**

**AVISO:** Este produto contém componentes que podem ser facilmente danificados por descarga eletrostática (ESD - Electrostatic Discharge). Para reduzir o risco de danos por ESD, não trabalhe sobre carpetes, use uma área de trabalho antiestática (semelhante a um revestimento de espuma condutora), e utilize uma pulseira própria para evitar descargas eletrostáticas que esteja conectada a uma superfície aterrada, como a estrutura metálica do computador.

**IMPORTANTE:** A unidade de disco rígido é extremamente sensível a choques e impacto. Não bata ou derrube a unidade. Não toque na placa de circuito. Eletricidade estática pode danificar a unidade.

**OBSERVAÇÃO:** Os recursos do computador podem variar de acordo com o modelo.



**1** CD/DVD Drive → **3**  
Unidad de CD/DVD  
Unidade de CD/DVD

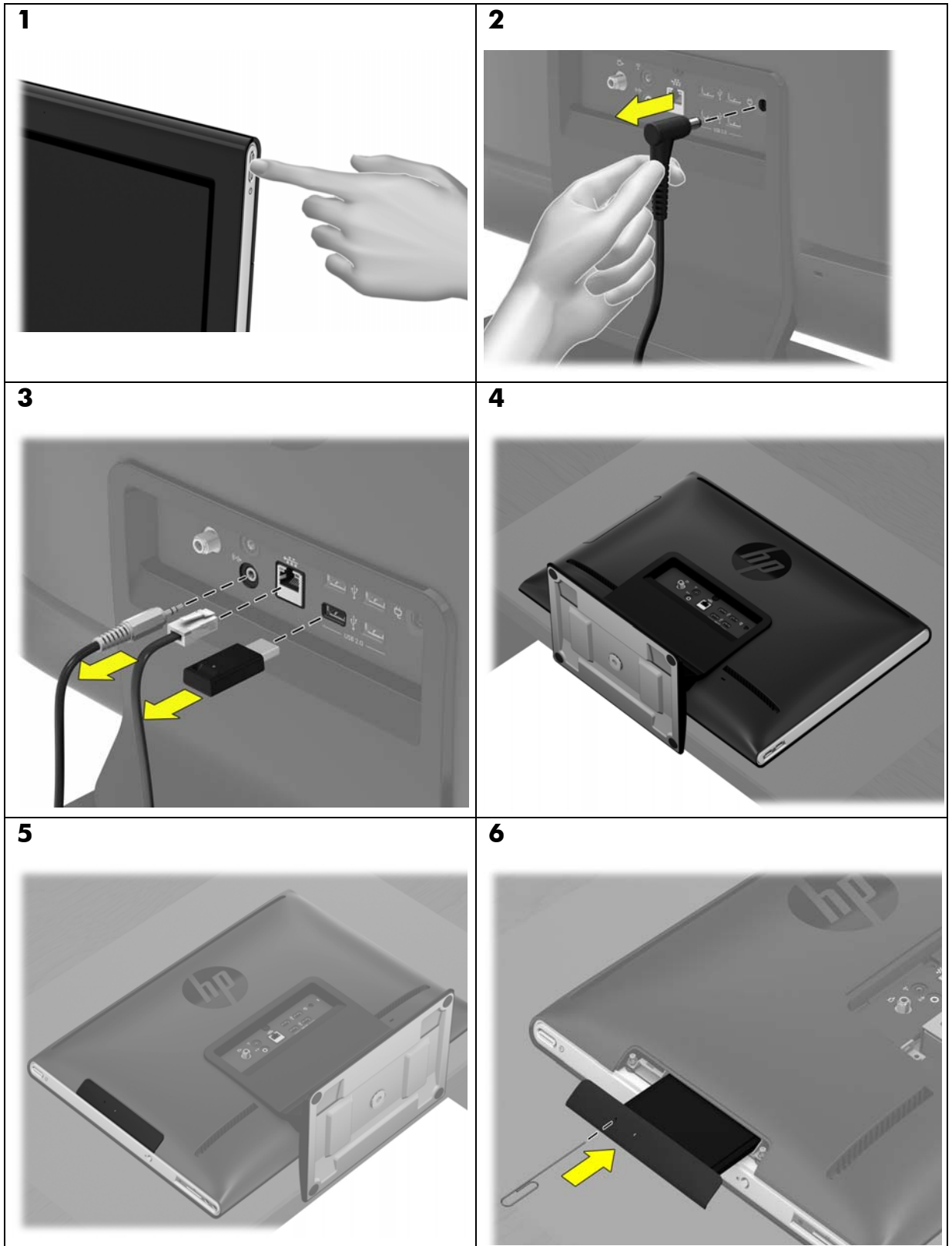
**2** Hard Drive → **8**  
Unidad de disco duro  
Unidade de disco rígido

**3** Memory Modules → **12**  
Módulos de memoria  
Módulos da memória

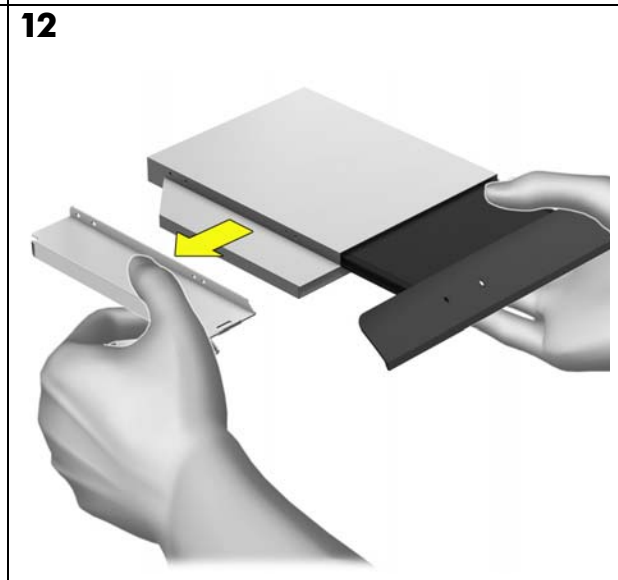
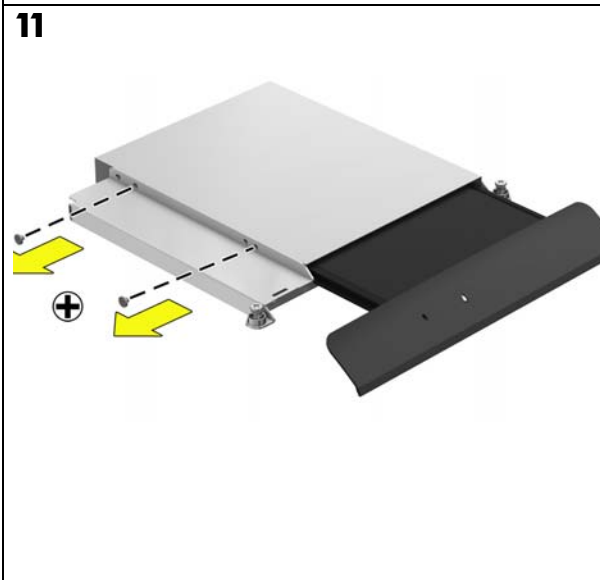
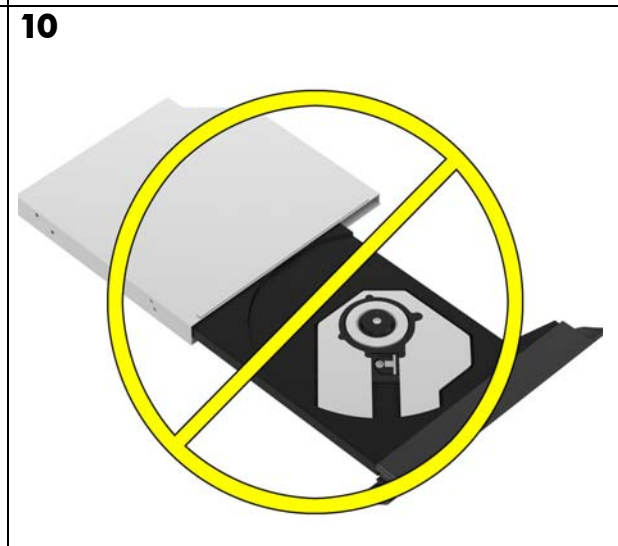
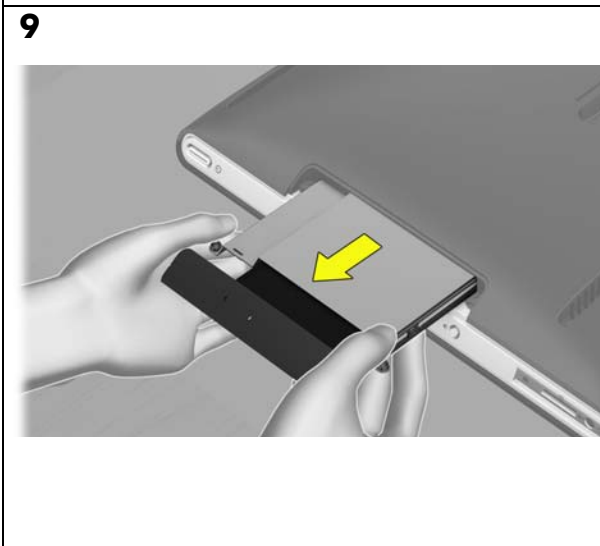
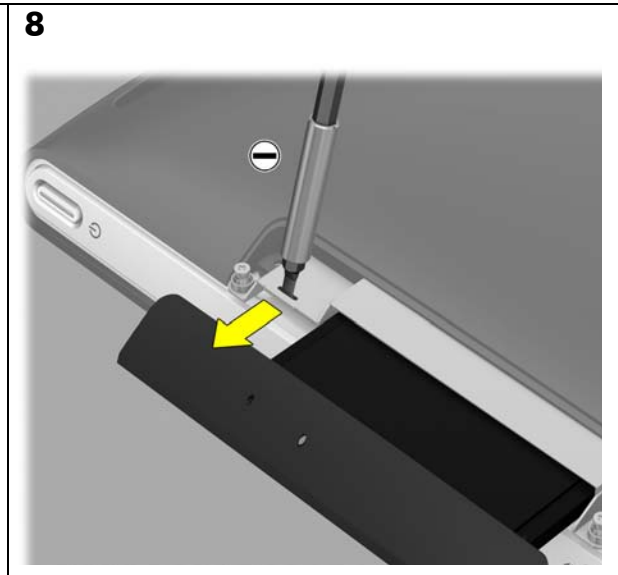
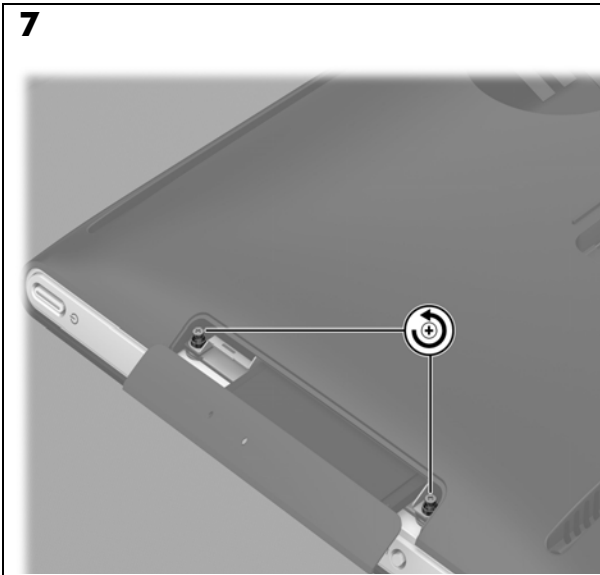


**4** Stand → **19**  
pie  
suporte

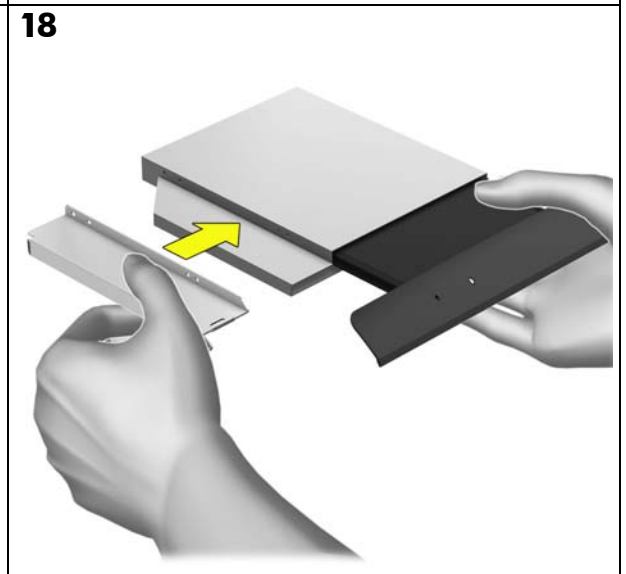
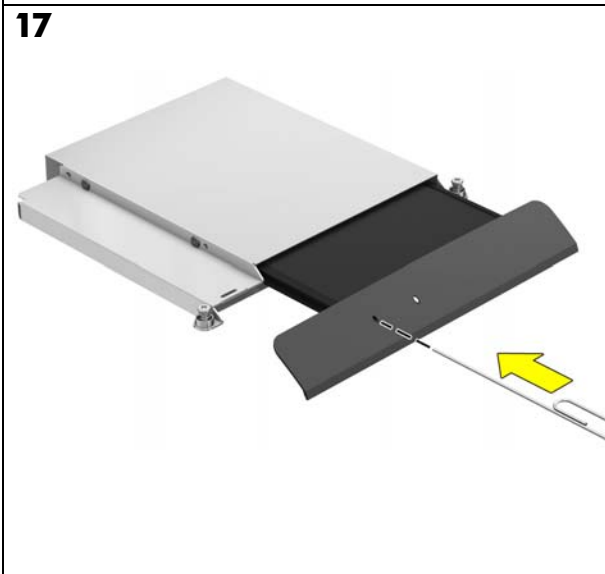
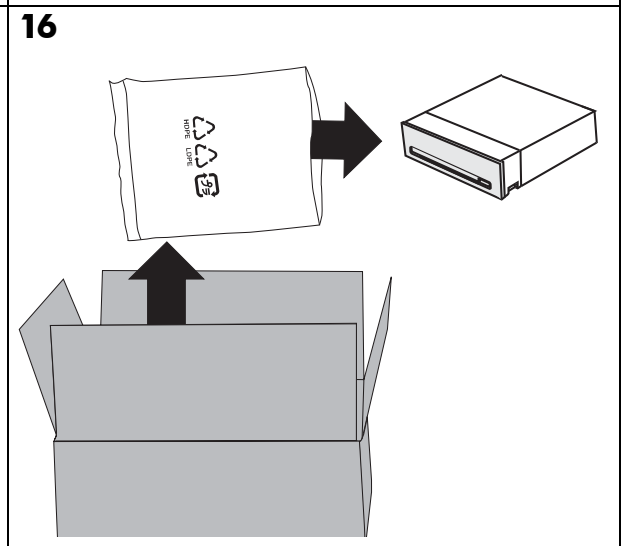
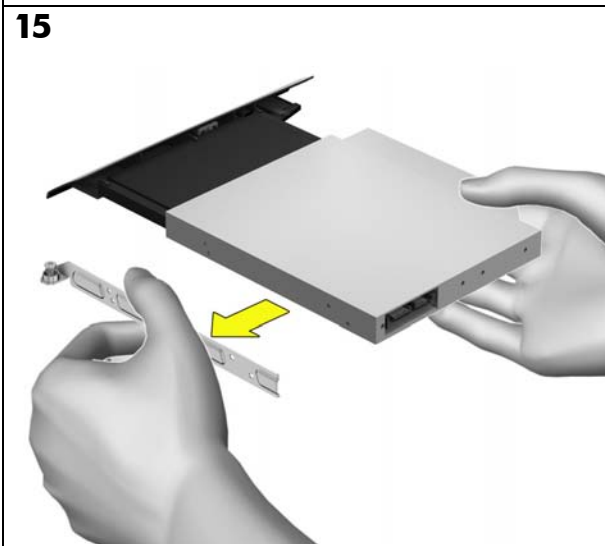
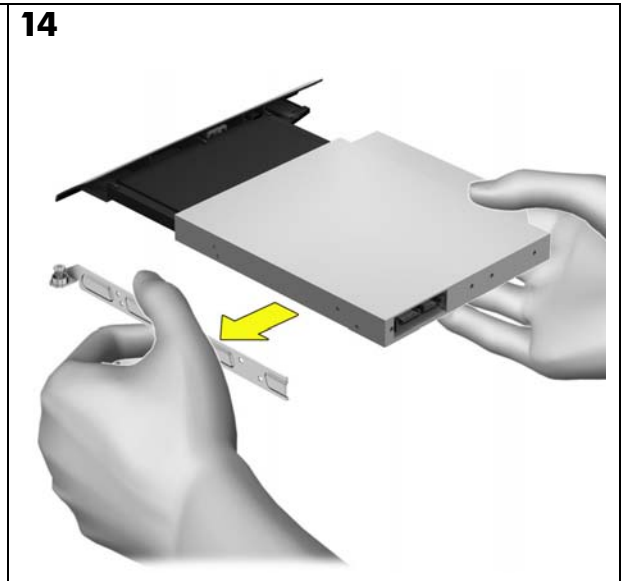
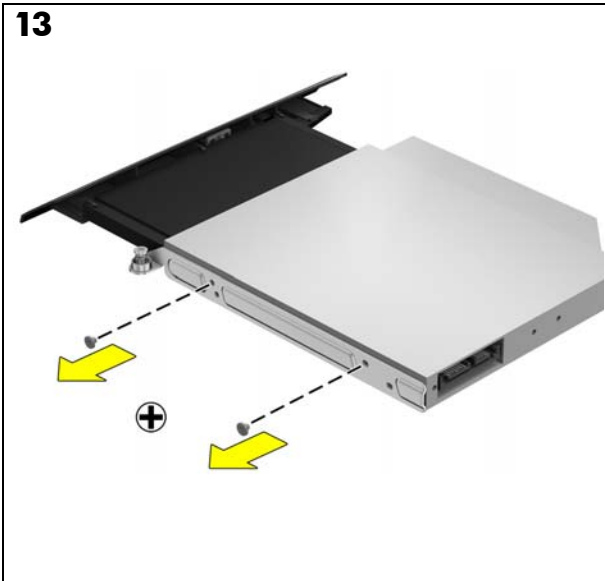
**CD/DVD Drive**  
**Unidad de CD/  
DVD**  
**Unidade de CD/  
DVD**



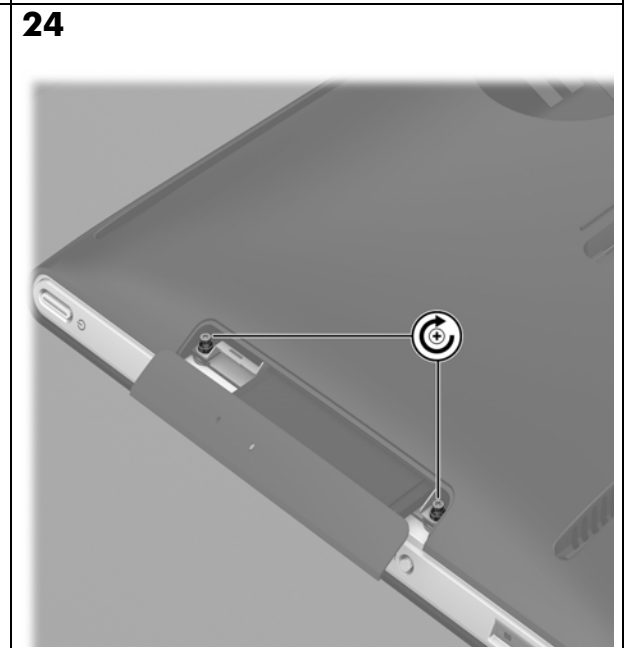
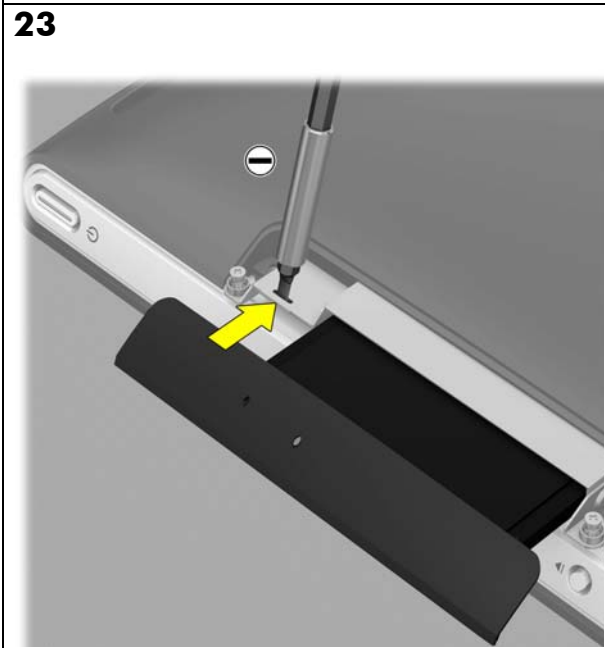
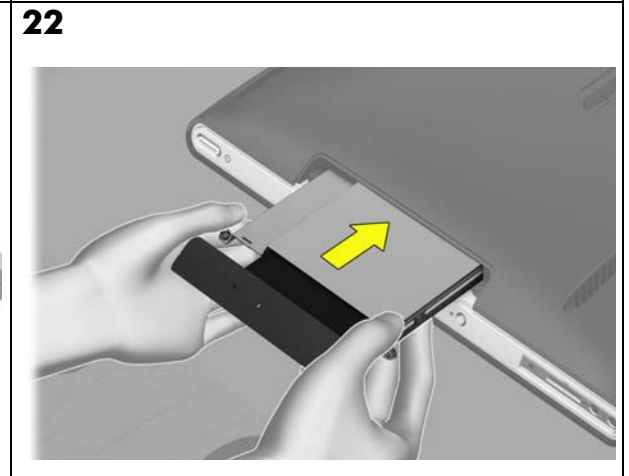
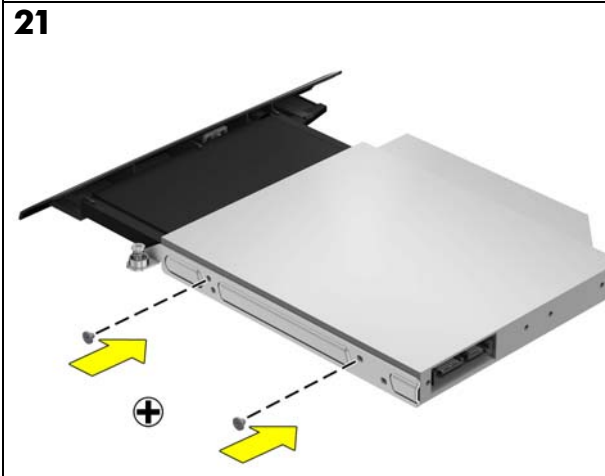
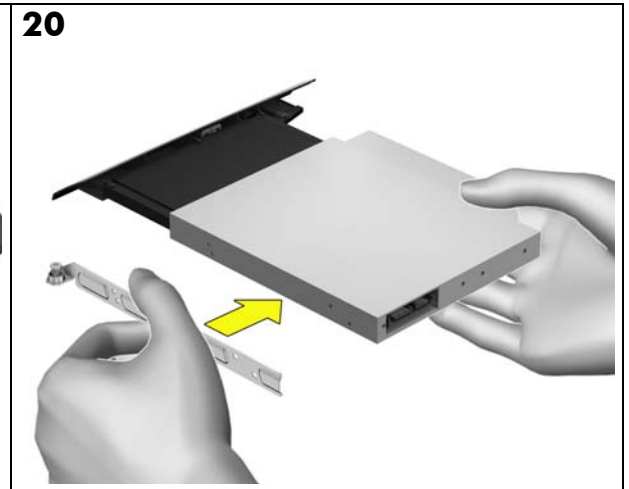
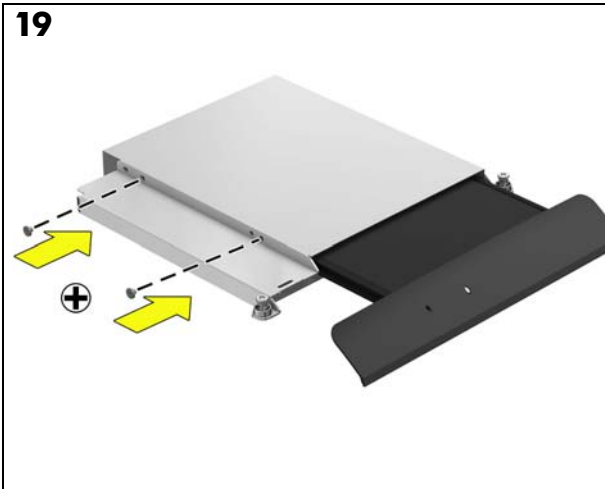
**CD/DVD Drive**  
**Unidad de CD/  
DVD**  
**Unidade de CD/  
DVD**



**CD/DVD Drive**  
**Unidad de CD/  
DVD**  
**Unidade de CD/  
DVD**



**CD/DVD Drive**  
**Unidad de CD/  
DVD**  
**Unidade de CD/  
DVD**



**CD/DVD Drive**  
**Unidad de CD/  
DVD**  
**Unidade de CD/  
DVD**

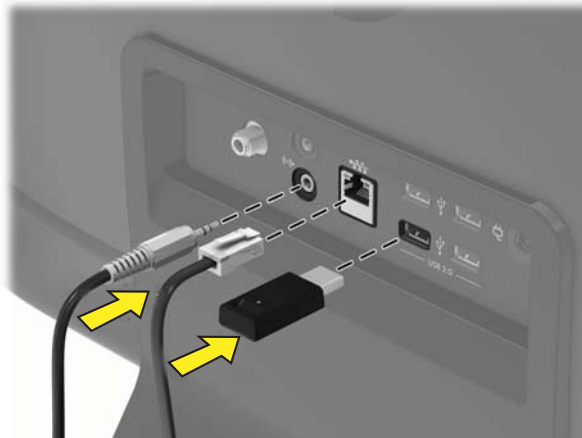
**25**



**26**



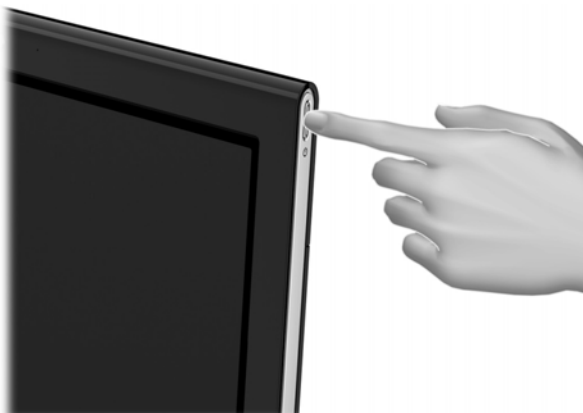
**27**



**28**



**29**

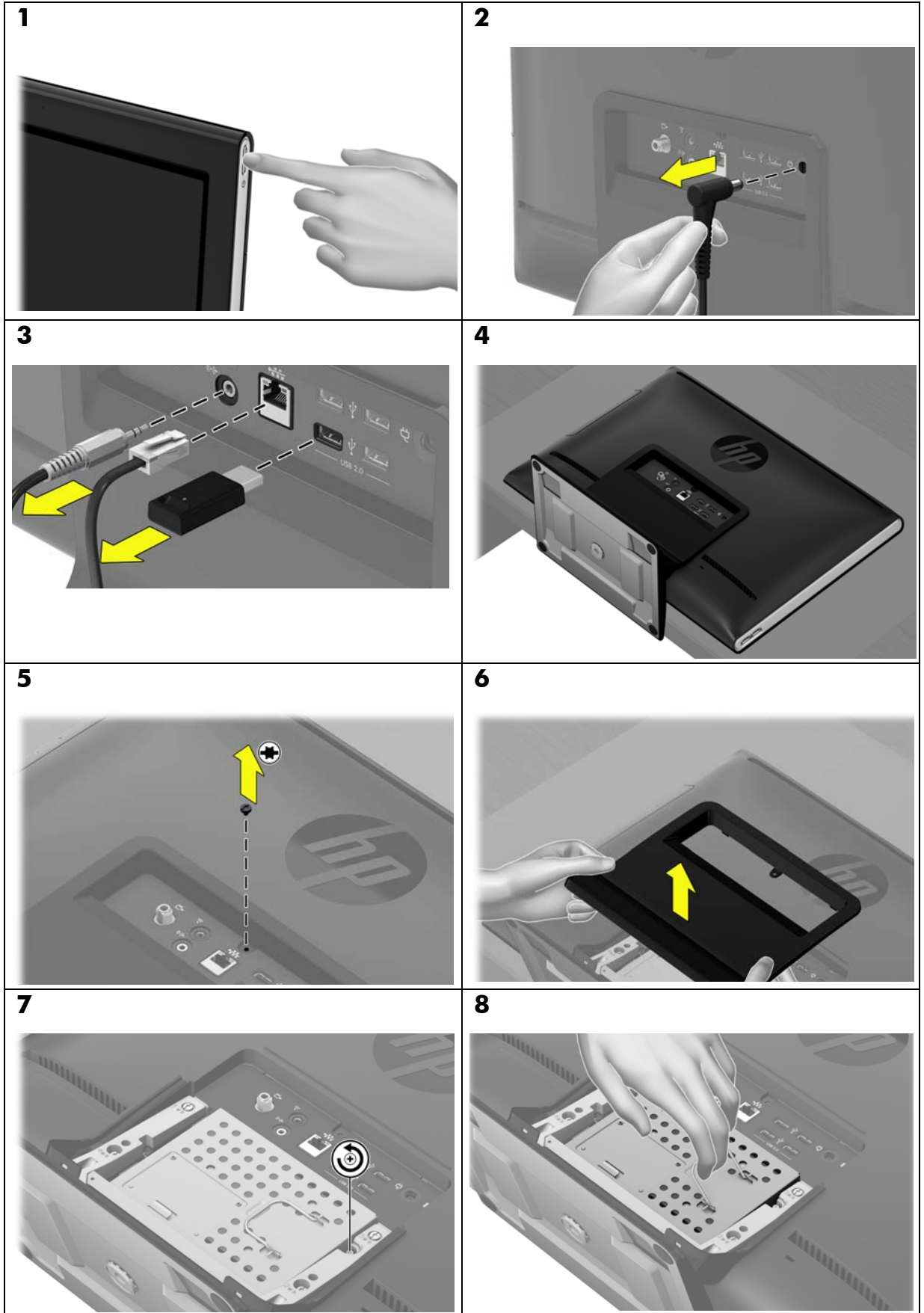




**Hard Drive**

**Unidad de disco duro**

**Unidade de disco rígido**



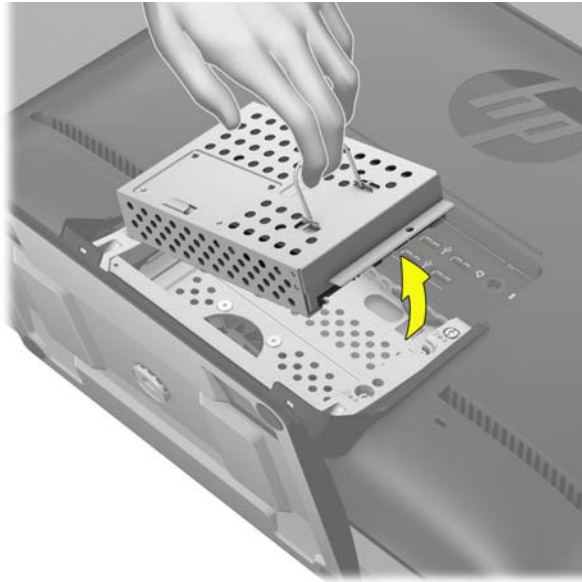


**Hard Drive**

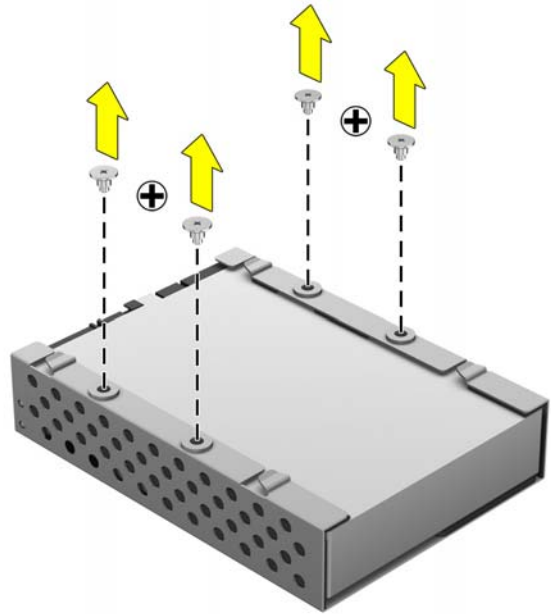
**Unidad de disco duro**

**Unidade de disco rígido**

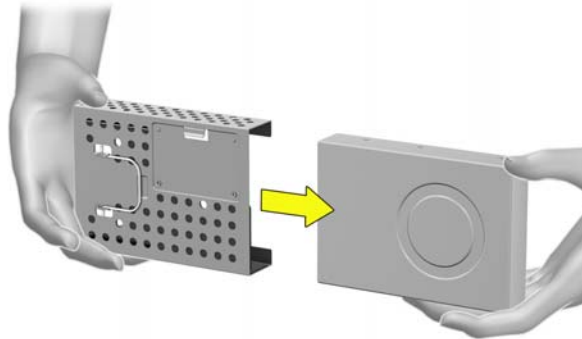
**9**



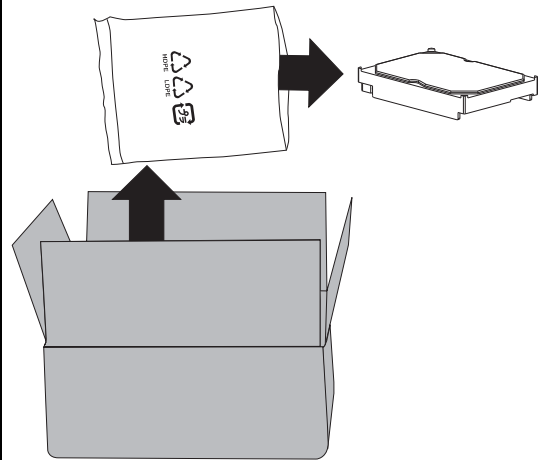
**10**



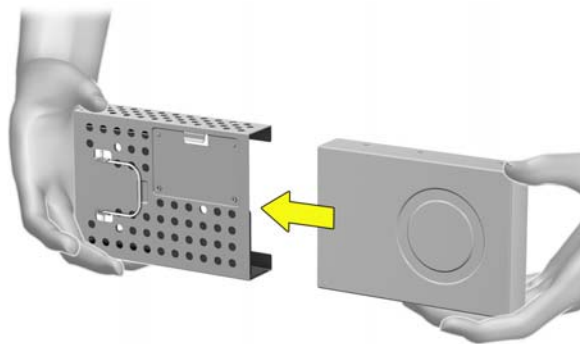
**11**



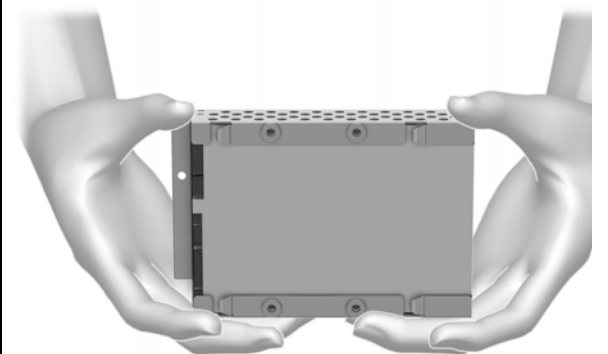
**12**



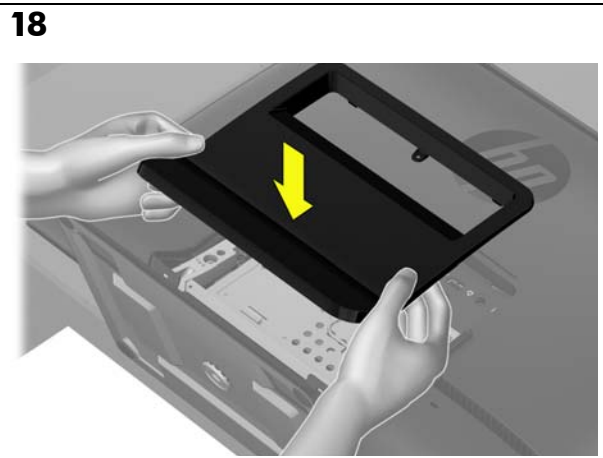
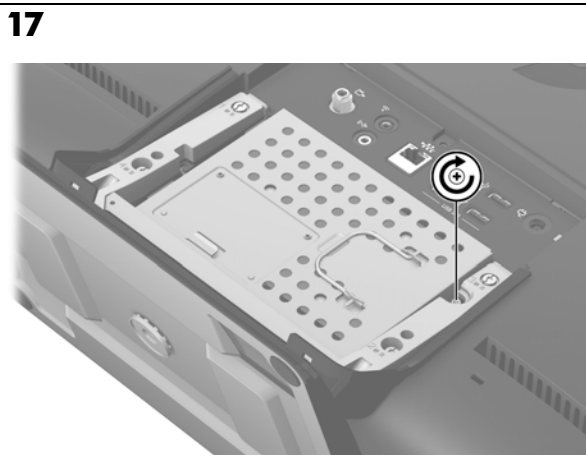
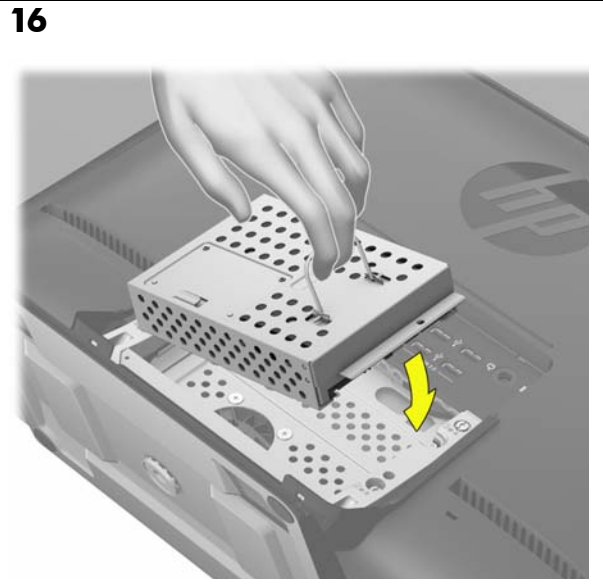
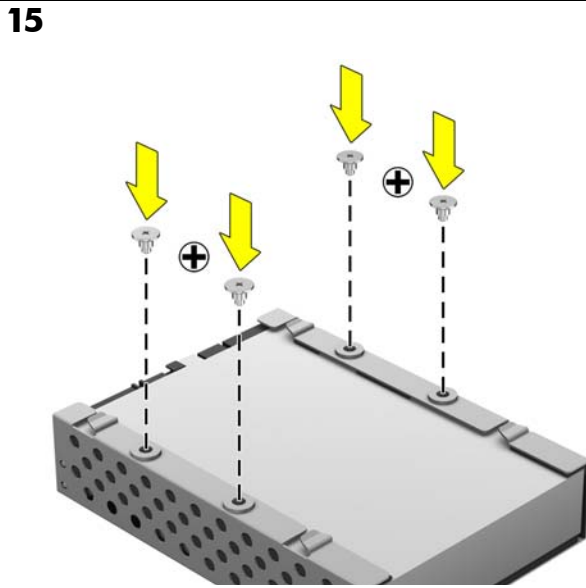
**13**



**14**

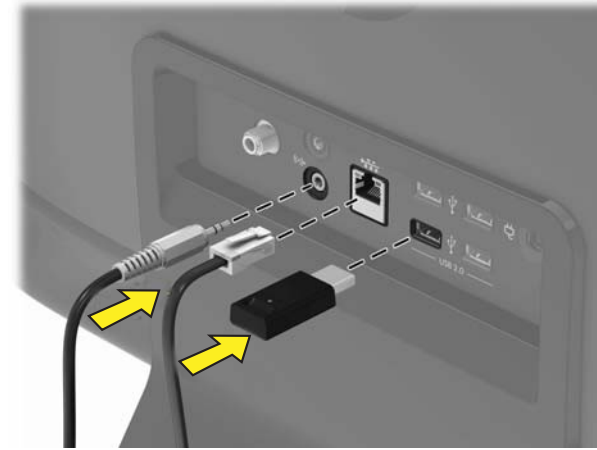


**Hard Drive**  
**Unidad de disco duro**  
**Unidade de disco rígido**



**Hard Drive**  
**Unidad de disco duro**  
**Unidade de disco rígido**

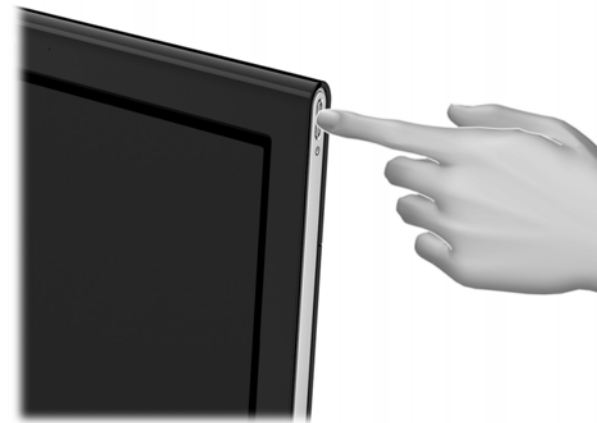
**21**



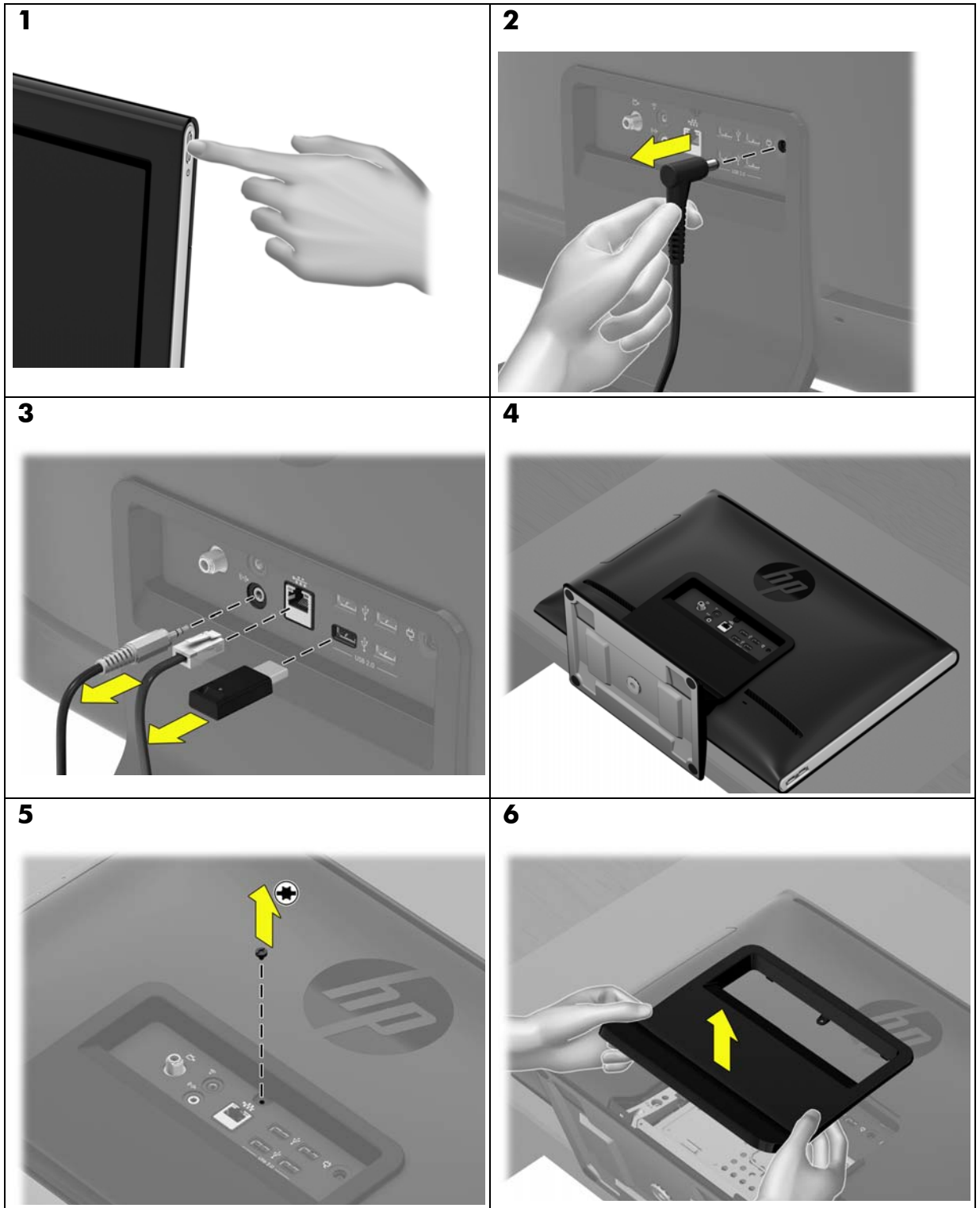
**22**



**23**



**Memory  
Modules**  
**Módulos de  
memória**  
**Módulos da  
memória**

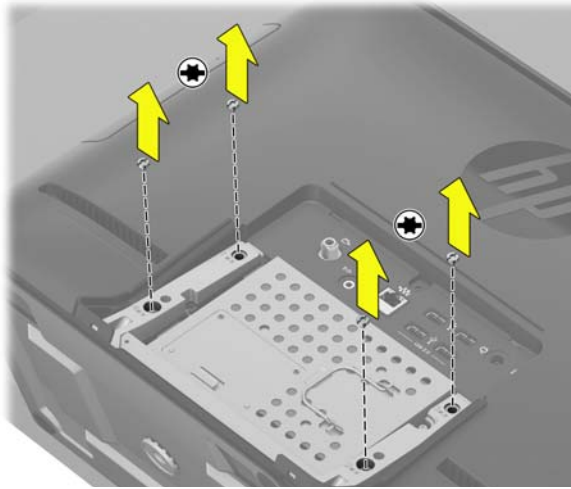


**Memory  
Modules**

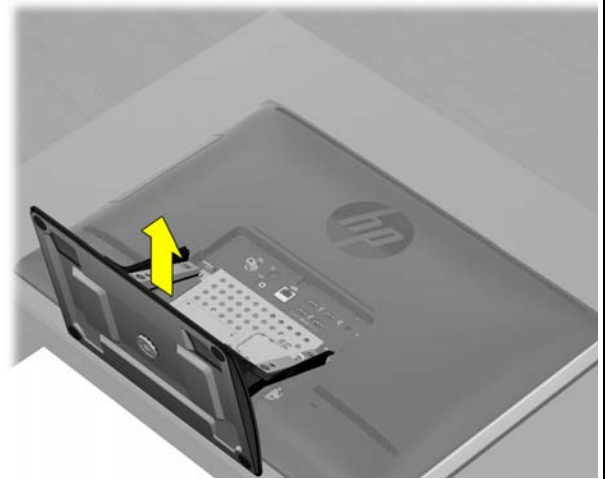
**Módulos de  
memória**

**Módulos da  
memória**

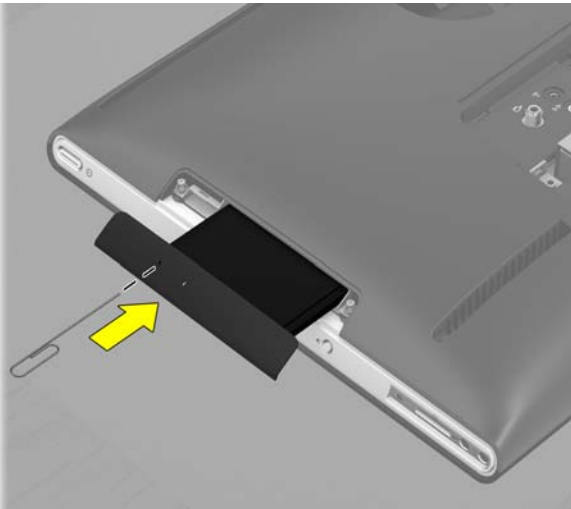
**7**



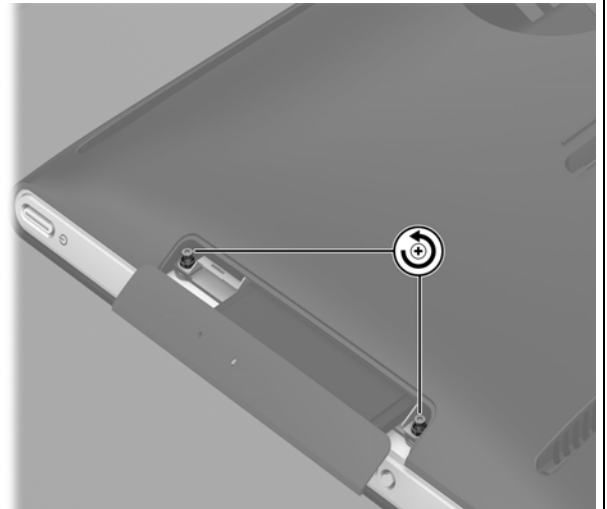
**8**



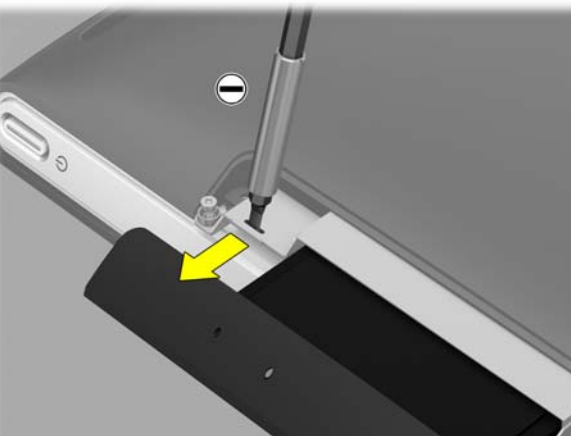
**9**



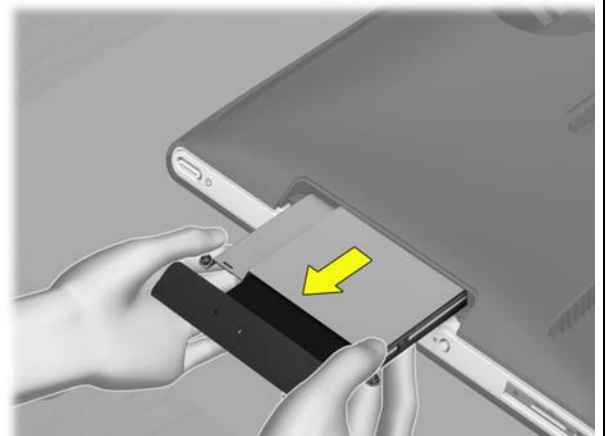
**10**



**11**



**12**



**Memory  
Modules**

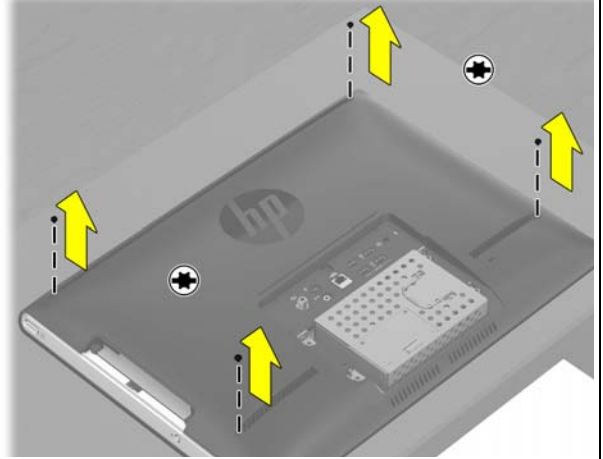
**Módulos de  
memória**

**Módulos da  
memória**

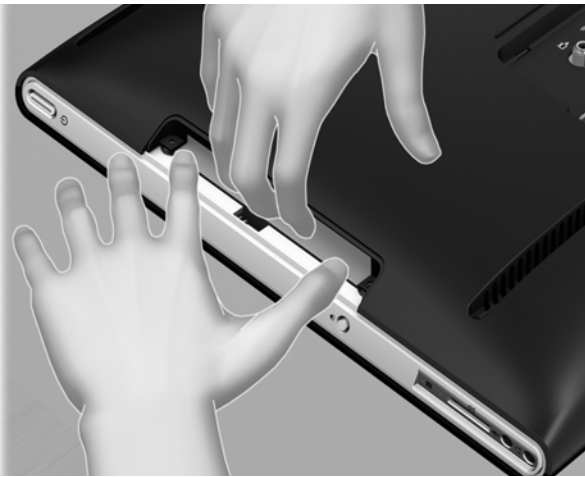
**13**



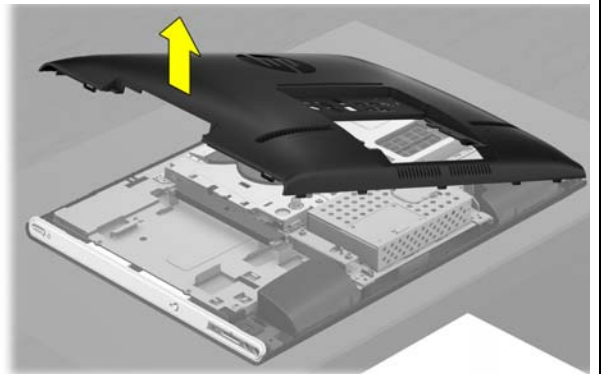
**14**



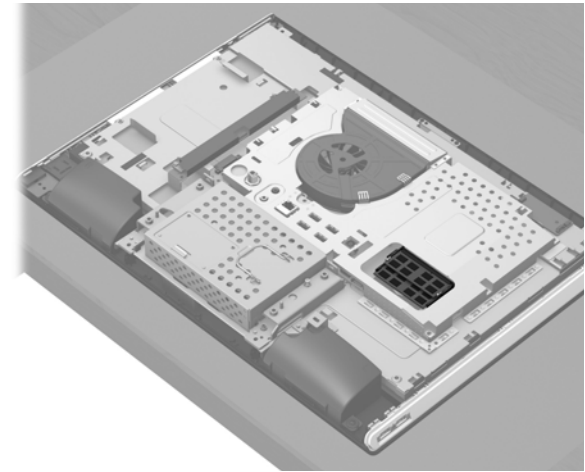
**15**



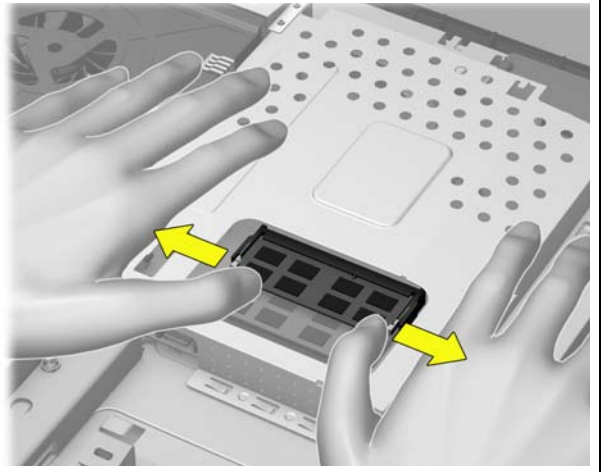
**16**



**17**



**18**



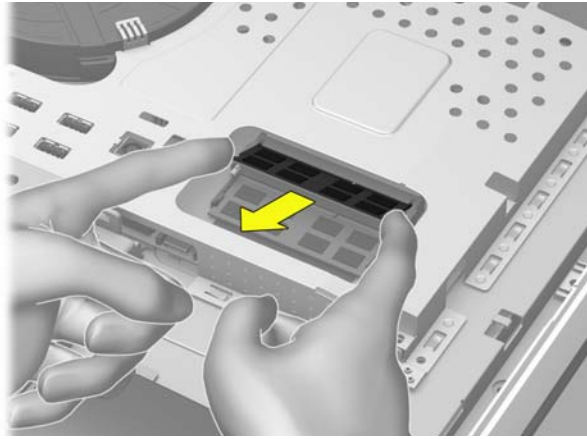


**Memory  
Modules**

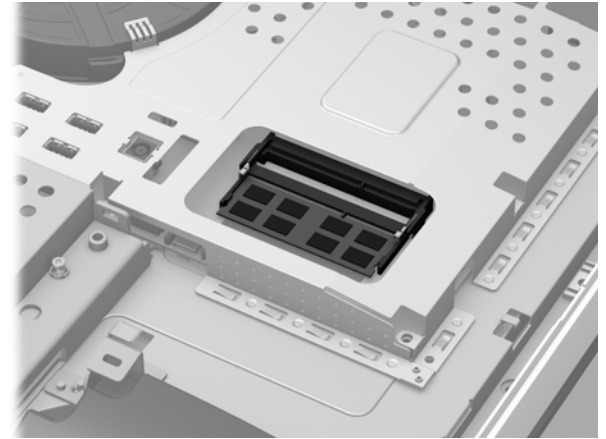
**Módulos de  
memória**

**Módulos da  
memória**

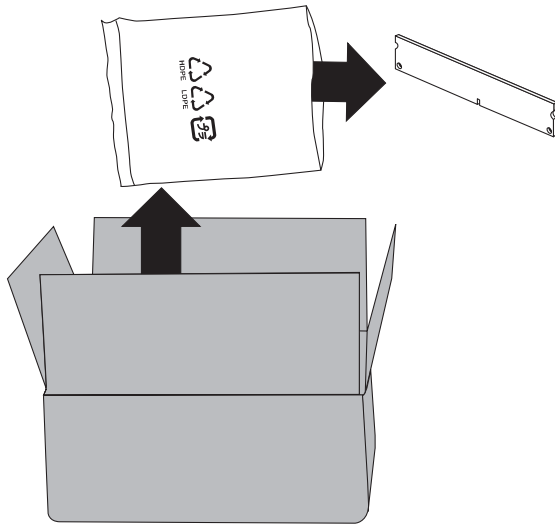
**19**



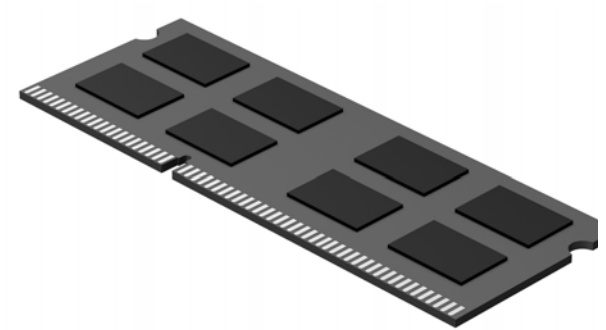
**20**



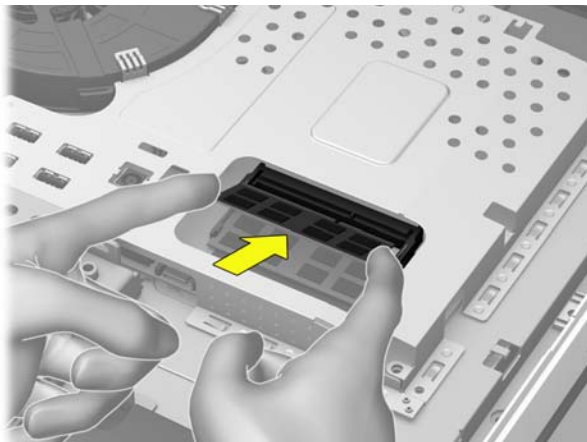
**21**



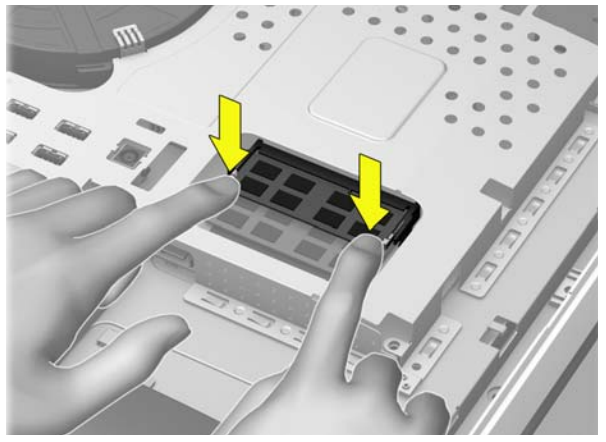
**22**



**23**



**24**



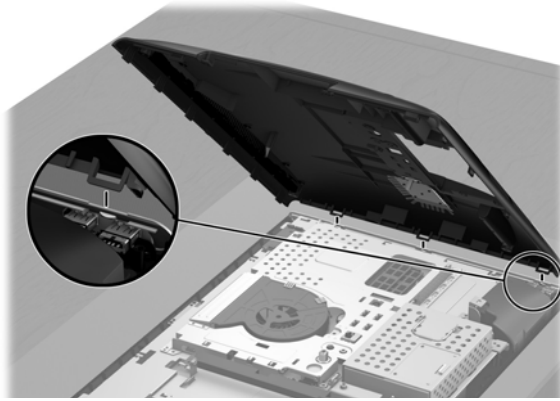


**Memory  
Modules**

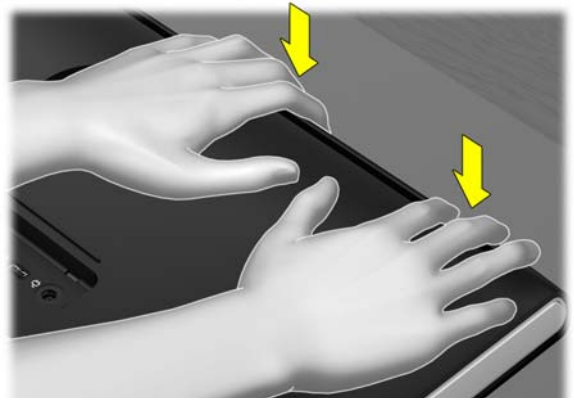
**Módulos de  
memória**

**Módulos da  
memória**

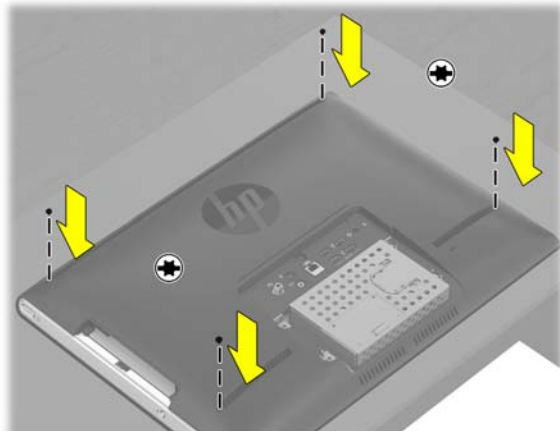
**25**



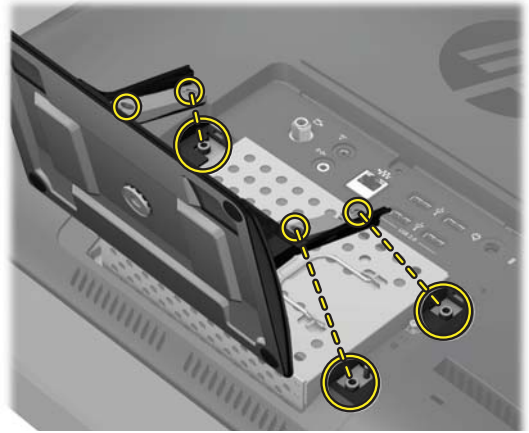
**26**



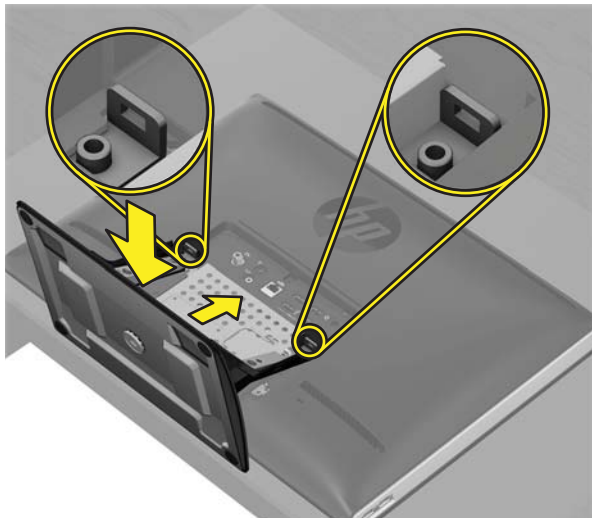
**27**



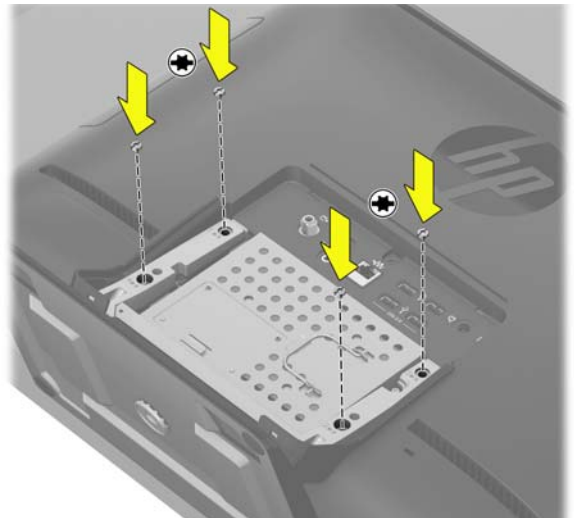
**28**



**29**



**30**

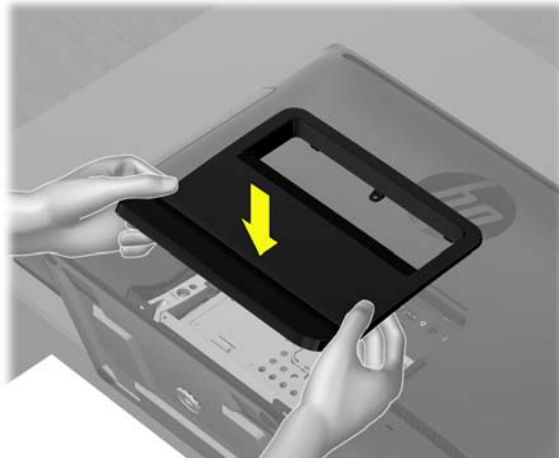


**Memory  
Modules**

**Módulos de  
memória**

**Módulos da  
memória**

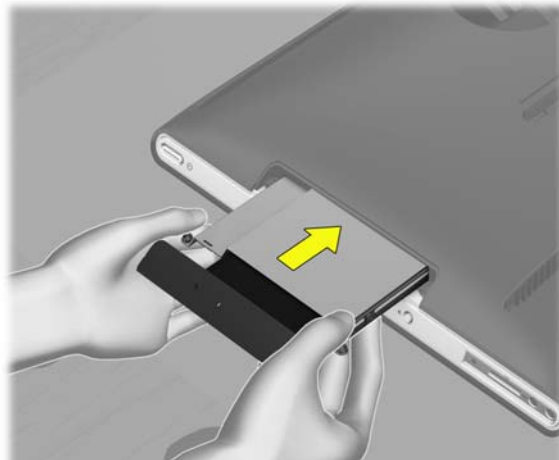
**31**



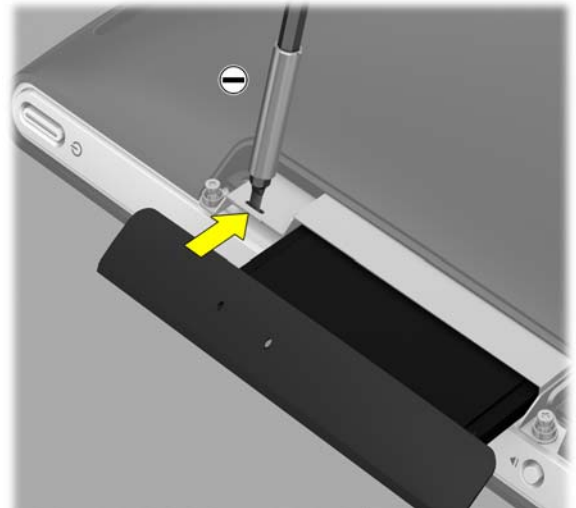
**32**



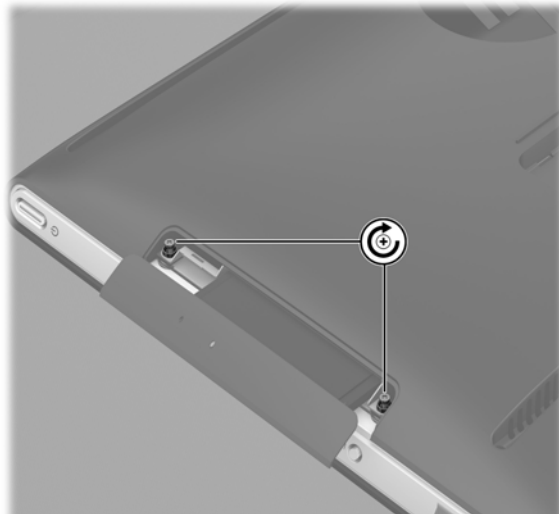
**33**



**34**



**35**



**36**



**Memory  
Modules**

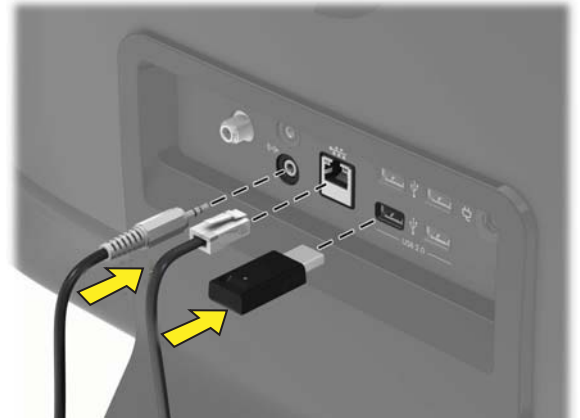
**Módulos de  
memória**

**Módulos da  
memória**

**37**



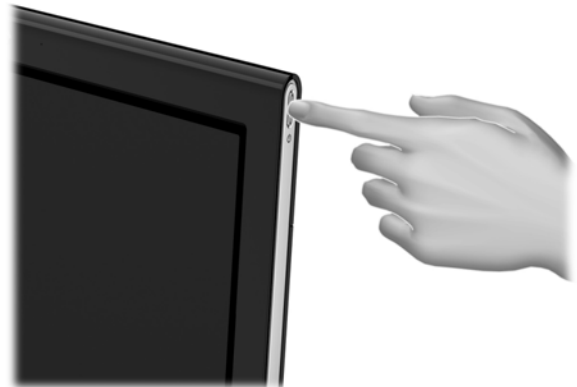
**38**



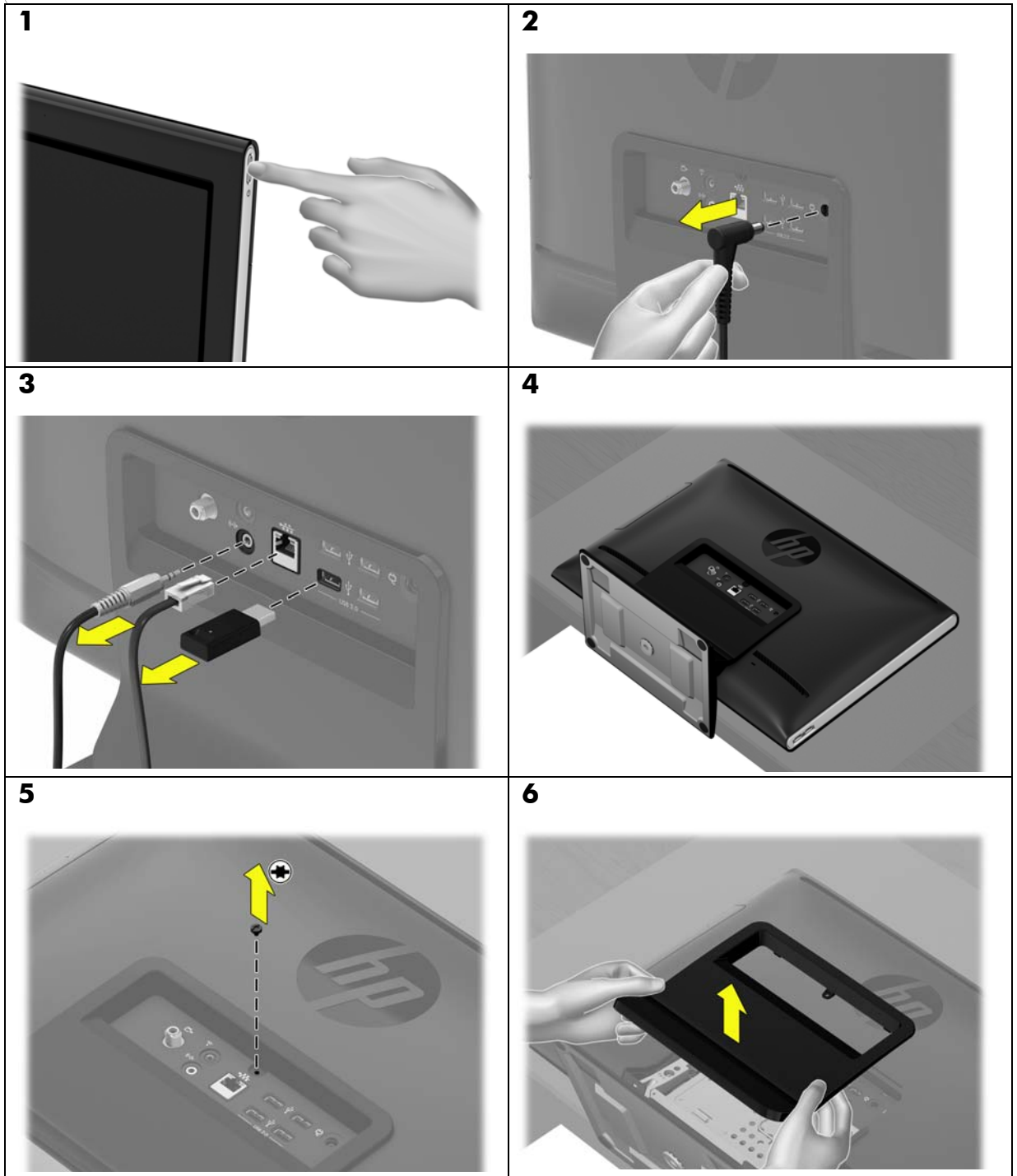
**39**



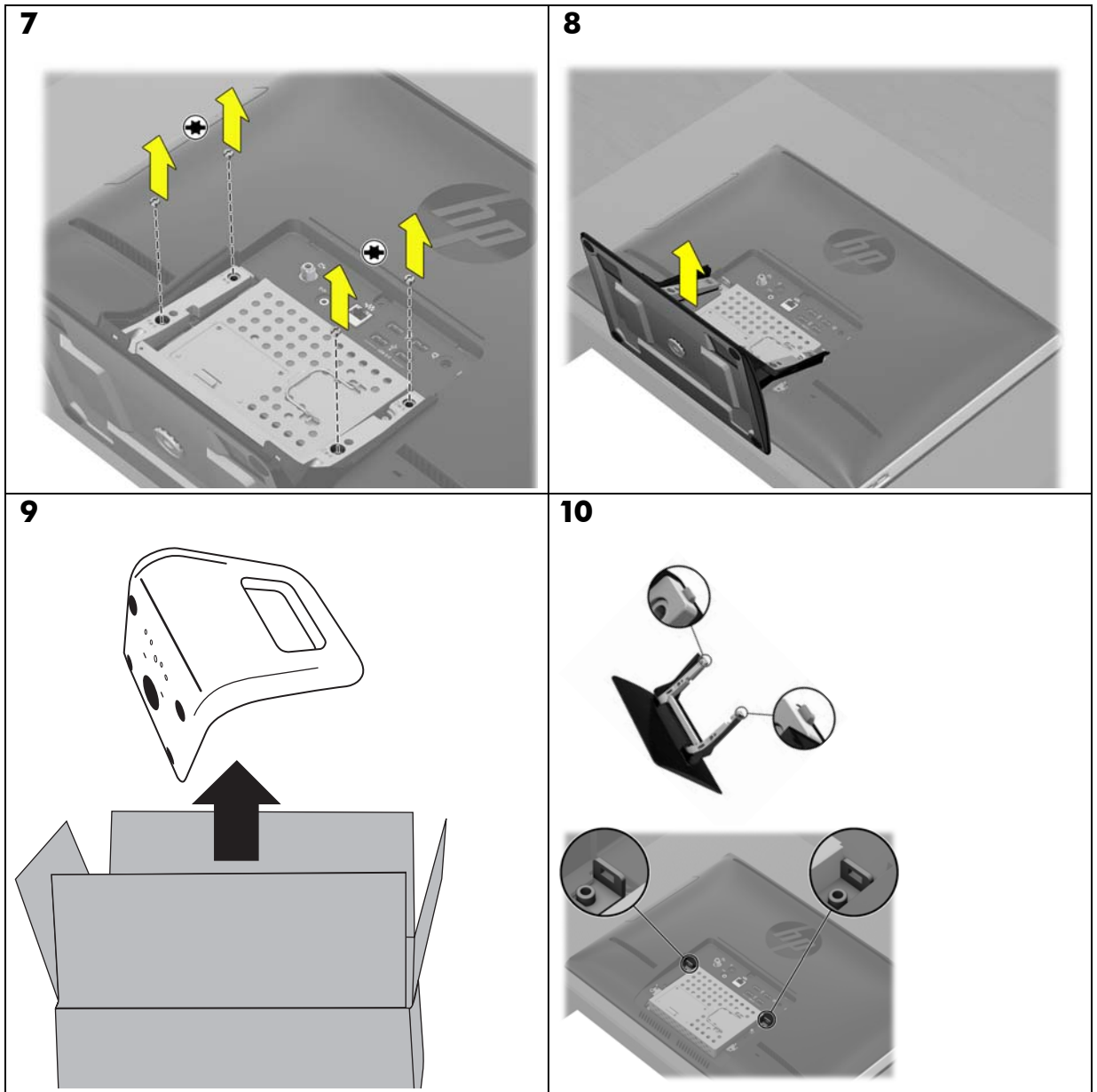
**40**



**Stand  
pie  
suporte**

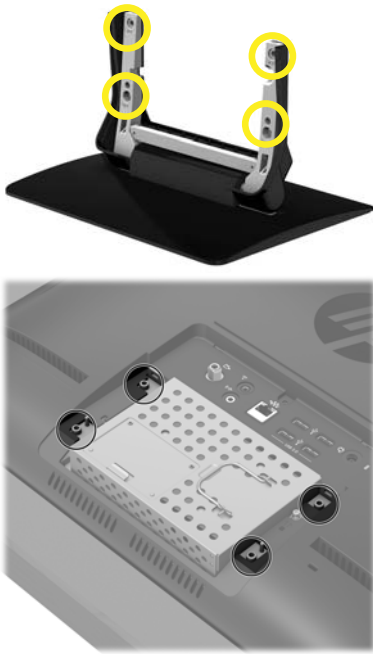


**Stand  
pie  
suporte**



**Stand  
pie  
suporte**

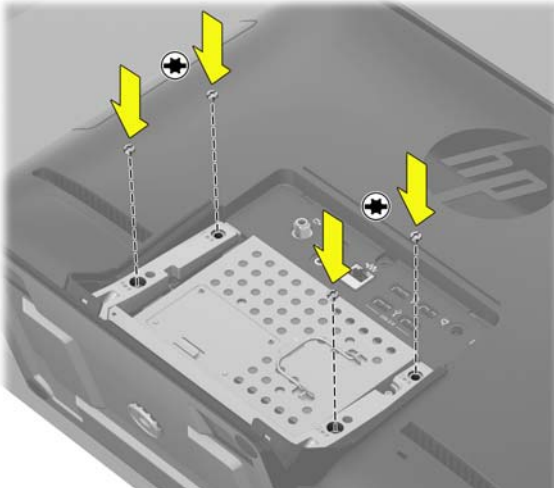
**11**



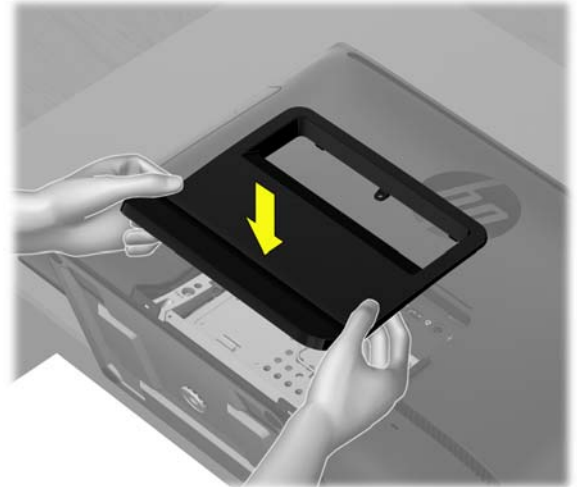
**12**



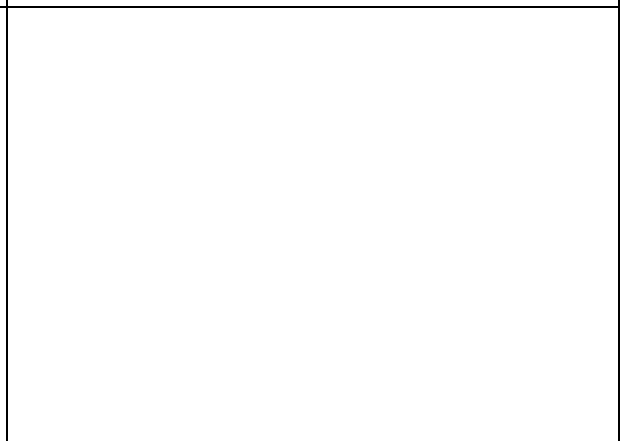
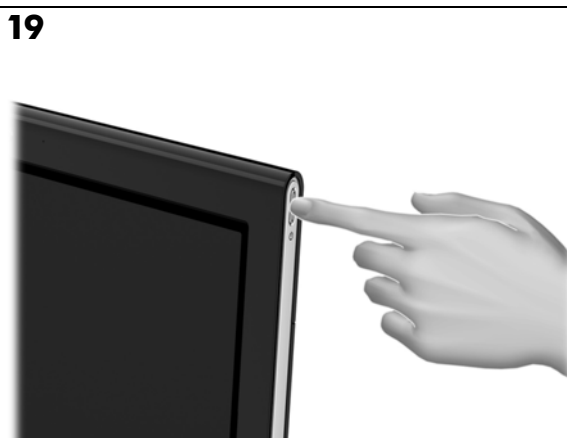
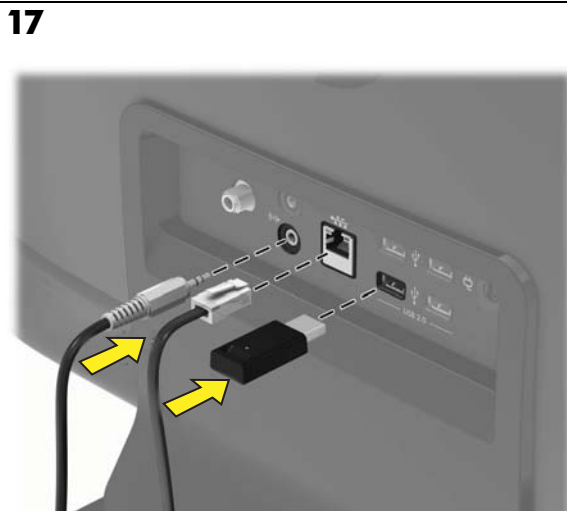
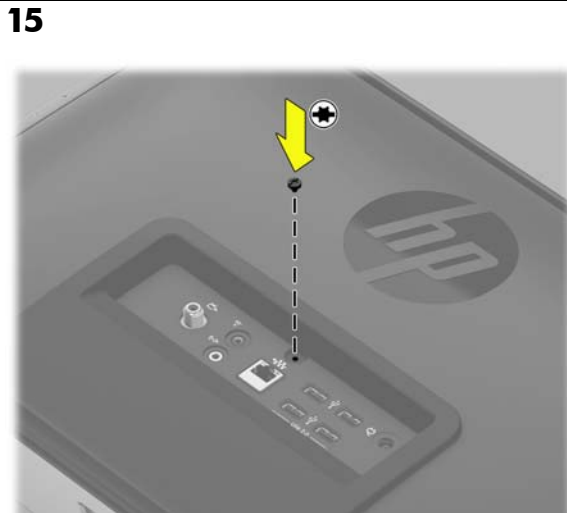
**13**



**14**



**Stand  
pie  
suporte**



© Copyright 2010 Hewlett-Packard Development Company, L.P.  
The information contained herein is subject to change without notice.  
Part number 628371-161



628371-161