



HP USB Keyboard with USB Ports

User Guide

© Copyright 2010 Hewlett-Packard Development Company, L.P. The information contained herein is subject to change without notice.

Microsoft, Windows, and Windows Vista are either trademarks or registered trademarks of Microsoft Corporation in the United States and/or other countries.

The only warranties for HP products and services are set forth in the express warranty statements accompanying such products and services. Nothing herein should be construed as constituting an additional warranty. HP shall not be liable for technical or editorial errors or omissions contained herein.

This document contains proprietary information that is protected by copyright. No part of this document may be photocopied, reproduced, or translated to another language without the prior written consent of Hewlett-Packard Company.

First Edition (July, 2010)

Document Part Number: 625018-001

About This Guide

This guide provides information on connecting the keyboard, compatible devices, and troubleshooting.




-  **WARNING!** Text set off in this manner indicates that failure to follow directions could result in bodily harm or loss of life.
-  **CAUTION:** Text set off in this manner indicates that failure to follow directions could result in damage to equipment or loss of information.
-  **NOTE:** Text set off in this manner provides important supplemental information.

Table of contents

HP USB Keyboard with USB Ports	1
Product Features	1
Kit Contents	1
Rear Components	2
Connecting the Keyboard to the Computer	2
Connecting USB Devices to the Keyboard	3
Appendix A Troubleshooting	5
Solving Common Problems	5
Online Technical Support	6
Preparing to Call Technical Support	6
Appendix B Agency Regulatory Notices	7
Federal Communications Commission Notice	7
Modifications	7
Cables	7
Declaration of Conformity for Products Marked with the FCC Logo (United States Only)	7
Product Environmental Notices	8
Disposal of Waste Equipment by Users in Private Household in the European Union	8
Chemical Substances	8
HP Recycling Program	8

HP USB Keyboard with USB Ports

Product Features

The HP USB Keyboard with USB Ports is a full-sized keyboard with built-in USB ports. The keyboard features:

- Removable USB cable
- Two external USB 2.0 ports that connect peripheral USB devices directly to the keyboard
- Adjustable slope

Kit Contents

Figure 1 Kit Contents



Table 1 Kit Contents

1	HP USB Keyboard with USB Ports
2	USB Cable (Type A to Type Mini-B)
3	I/O and Security Software and Documentation CD

Rear Components

Figure 2 Rear Components

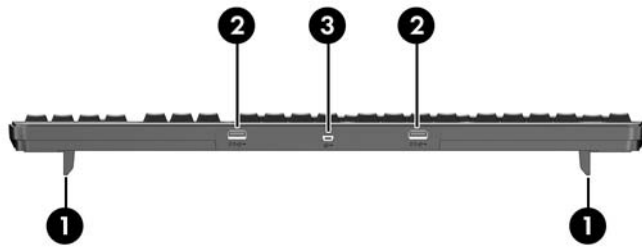


Table 2 Rear Components

1	Expandable Feet	Adjusts the slope of the keyboard.
2	USB Ports (Type A)	Connects USB devices to the keyboard.
3	USB Connector (Type Mini-B)	Connects the keyboard to the computer.

Connecting the Keyboard to the Computer

To begin using the HP USB Keyboard with USB Ports, connect the USB cable between the keyboard and the computer.

1. Using the USB cable provided with the keyboard, connect the Type Mini-B end of the USB cable (with the USB logo on the cable end facing up) to the USB receptacle on the keyboard.
2. Connect the Type A end of the USB cable to a USB receptacle on the computer.


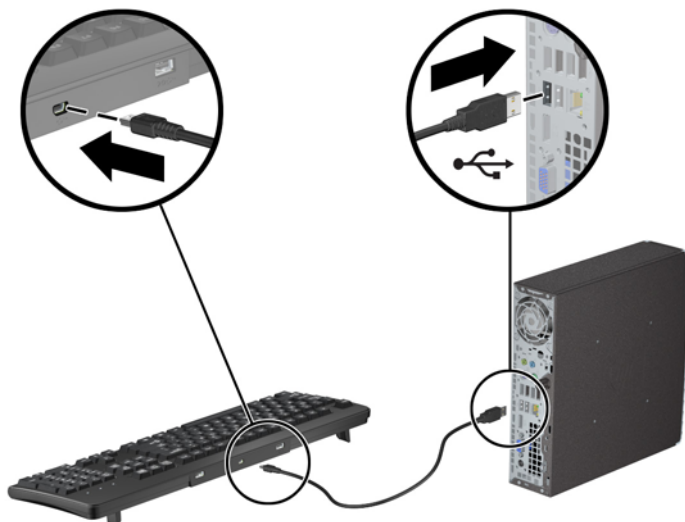
 **NOTE:** Depending on the computer model, the USB receptacle may be located on the front, rear, or sides of the computer. Connect the USB cable to the USB receptacle that is convenient for your setup.

Figure 3 Connecting the Keyboard to the Computer

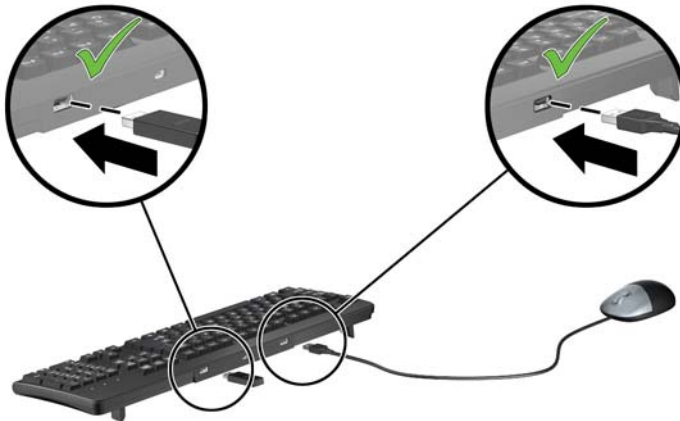


Connecting USB Devices to the Keyboard

- You can connect USB devices, such as a mouse or USB flash drive, to the keyboard.

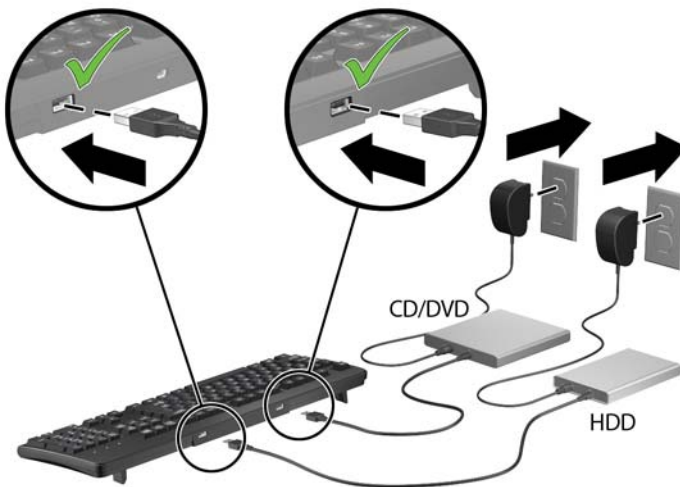
 **NOTE:** See [Table 3 Compatible and Non-Compatible USB Devices on page 4](#).

Figure 4 Connecting USB Devices



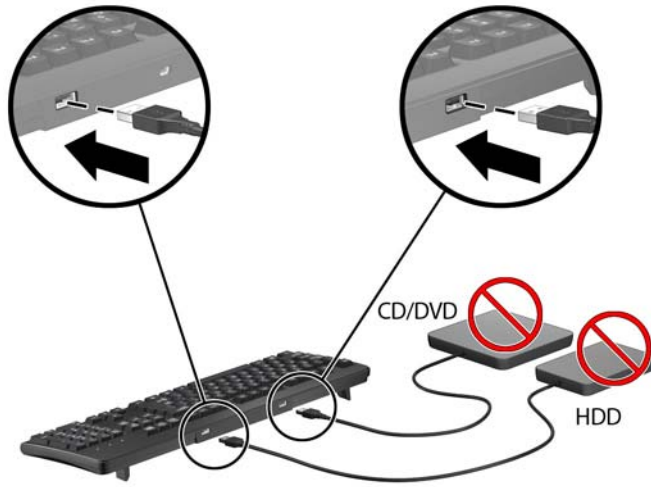
- You can connect external USB hard drives and optical drives to the keyboard but the drives must have an external power source,

Figure 5 Connecting Powered Drives



- External USB hard drives and optical drives that do not have an external power source are not supported.

Figure 6 Unsupported Drives



The following table lists examples of USB devices that are compatible and non-compatible with the HP USB Keyboard with USB Ports.

NOTE: The two USB ports on the keyboard each support devices up to 100 milliamps of power. If a device declares over 100mA, a notification will appear in the Windows system tray.

Devices listed as compatible in the following table must not exceed 100mA of power to function properly.

Table 3 Compatible and Non-Compatible USB Devices

Compatible USB Devices	Non-Compatible USB Devices
Mouse	Non-powered Hard Drive
USB Flash Drive	Non-powered CD/DVD Drive
Smart Card Reader	Non-powered Scanners
Digital Camera	Non-powered Printers
MP3 Player Charger	Web Cam
Cell Phone Charger	Game Pad
Powered Hard Drive	Bluetooth Dongle
Powered CD/DVD Drive	Media Card Reader
Headset	Speakers
Microphone	Tablet Computer
USB 3.0 Devices at USB 2.0 Speed	USB 3.0 Devices at USB 3.0 Speed

A Troubleshooting

Solving Common Problems

Table A-1 Troubleshooting

Problem	Possible Cause	Solution
Keyboard does not function.	USB cable is not properly connected to the computer.	Ensure that the provided USB cable is properly connected to the computer and keyboard.
	USB cable is bad.	Connect a different Type A to Type Mini-B USB cable between the computer and keyboard.
	USB port on the computer is not functioning.	Connect the keyboard to a different USB port on the computer that has been tested with another device and is confirmed functioning.
	Computer needs to be rebooted.	Reboot the computer.
One or both USB devices connected to the keyboard do not function.	USB cable is not properly connected.	Ensure that the provided USB cable is properly connected to the computer and keyboard. Reconnect the USB cable for each device.
	The device may require software or drivers that are not installed.	Refer to the device manufacturer's instructions to install software or drivers for the device.
	The device may have malfunctioned.	To check if there is a problem with the device, connect it directly to the computer to see if it functions properly.
	Devices draw too much power.	Check the device manufacturer's specifications to see if the device exceeds the 100mA power limit. If one device uses over 100mA, there is less power available for the second device.

Table A-1 Troubleshooting (continued)

Problem	Possible Cause	Solution
External USB hard drive or optical drive does not function when connected to the keyboard.	Drive requires an external power source.	Only hard drives and optical drives with an external power source are supported. Ensure that the drive is plugged into an external power source. Hard drives and optical drives that do not have an external power source are not supported.
USB 3.0 device does not run at USB 3.0 speed.	USB 3.0 speeds are not supported.	USB 3.0 devices will only run at USB 2.0 speed when plugged into the USB 2.0 ports on the keyboard.

Online Technical Support

For the online access to technical support information, self-solve tools, online assistance, community forums or IT experts, broad multivendor knowledge base, monitoring and diagnostic tools, go to <http://www.hp.com/support>.

Preparing to Call Technical Support

If you cannot solve a problem using the troubleshooting tips in this section, you may call technical support. Have the following information available when you call:

- Serial number of the HP accessory located on the bottom of the product
- Purchase date on invoice
- Condition under which the problem occurred
- Error messages received
- Hardware configuration
- Hardware and software you are using

B Agency Regulatory Notices

Federal Communications Commission Notice

This equipment has been tested and found to comply with the limits for a Class B digital device, pursuant to Part 15 of the FCC Rules. These limits are designed to provide reasonable protection against harmful interference in a residential installation. This equipment generates, uses, and can radiate radio frequency energy and, if not installed and used in accordance with the instructions, may cause harmful interference to radio communications. However, there is no guarantee that interference will not occur in a particular installation. If this equipment does cause harmful interference to radio or television reception, which can be determined by turning the equipment off and on, the user is encouraged to try to correct the interference by one or more of the following measures:

- Reorient or relocate the receiving antenna.
- Increase the separation between the equipment and the receiver.
- Connect the equipment into an outlet on a circuit different from that to which the receiver is connected.
- Consult the dealer or an experienced radio or television technician for help.

Modifications

The FCC requires the user to be notified that any changes or modifications made to this device that are not expressly approved by Hewlett Packard Company may void the user's authority to operate the equipment.

Cables

Connections to this device must be made with shielded cables with metallic RFI/EMI connector hoods to maintain compliance with FCC Rules and Regulations.

Declaration of Conformity for Products Marked with the FCC Logo (United States Only)

This device complies with Part 15 of the FCC Rules. Operation is subject to the following two conditions:

1. This device may not cause harmful interference.
2. This device must accept any interference received, including interference that may cause undesired operation.

For questions regarding the product, contact:

Hewlett Packard Company
P. O. Box 692000, Mail Stop 530113
Houston, Texas 77269-2000
Or, call 1-800-HP-INVENT (1-800 474-6836)

For questions regarding this FCC declaration, contact:

Hewlett Packard Company
P. O. Box 692000, Mail Stop 510101
Houston, Texas 77269-2000
Or, call (281) 514-3333

To identify this product, refer to the Part, Series, or Model number found on the product.

Product Environmental Notices

Disposal of Waste Equipment by Users in Private Household in the European Union



This symbol on the product or on its packaging indicates that this product must not be disposed of with your household waste. Instead, it is your responsibility to dispose of your waste equipment by handing it over to a designated collection point for the recycling or waste electrical and electronic equipment. The separate collection and recycling of your waste equipment at the time of disposal will help to conserve natural resources and ensure that it is recycled in a manner that protects human health and the environment. For more information about where you can drop off your waste equipment for recycling, please contact the local city office, the household waste disposal service or the shop where you purchased the product.

Chemical Substances

HP is committed to providing our customers with information about the chemical substances in our products as needed to comply with legal requirements such as REACH (*Regulation EC No 1907/2006 of the European Parliament and the Council*). A chemical information report for this product can be found at: <http://www.hp.com/go/reach>

HP Recycling Program

HP encourages customers to recycle used electronic hardware, HP original print cartridges, and rechargeable batteries. For more information about recycling programs, go to <http://www.hp.com/recycle>.