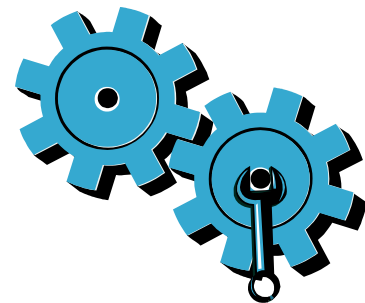


Setup Troubleshooting



If your printer doesn't turn on, try these steps:

1. Check the power cord.
2. Unplug the power cord.
3. Plug the power cord back in, and then press the **Ⓢ** button.
4. Take care not to press the **Ⓢ** button too quickly. Press it only once.
5. If you still have a problem, contact HP support for service. Go to www.hp.com/support.

Network Troubleshooting



Run a **Wireless Network Test** to check that your printer is on the network. To do this:

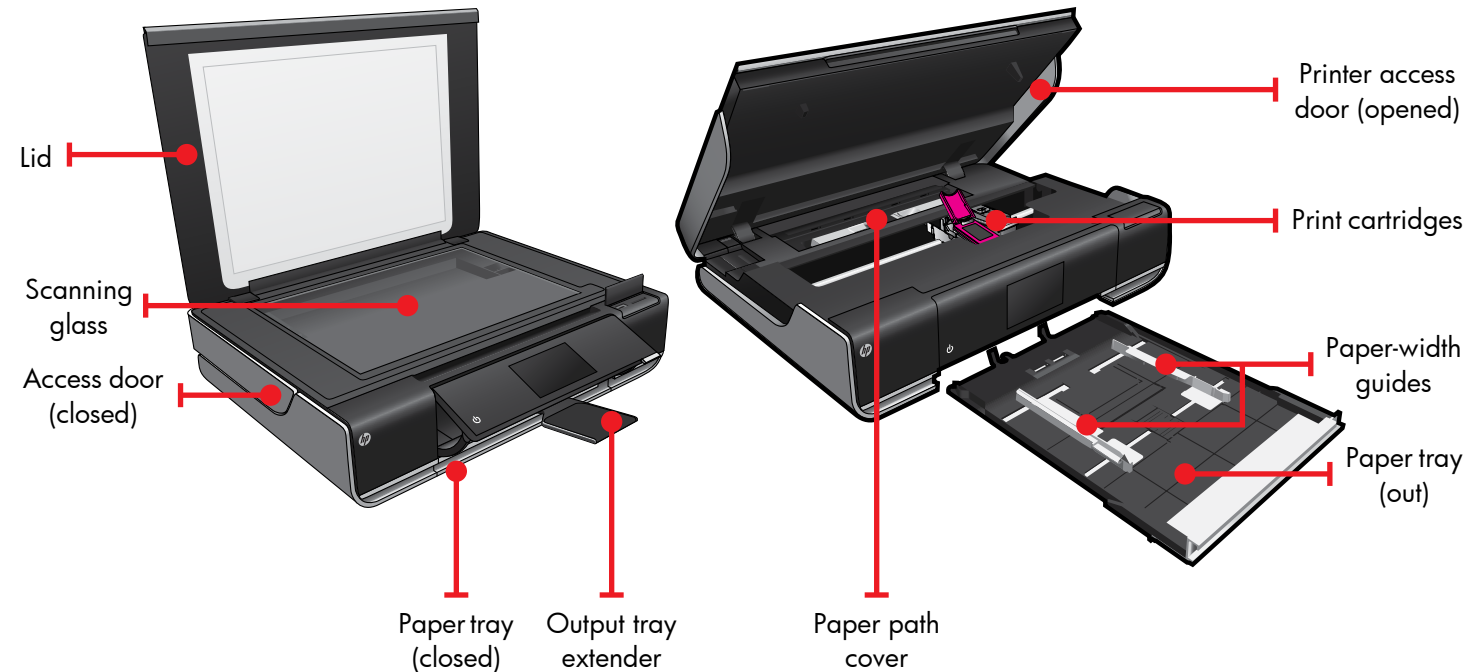
1. On the printer display, touch the **Wireless** icon to open the **Wireless** menu.
2. Touch **Settings**, then select **Wireless Network Test**. The Wireless Network Test Report is automatically printed.

If your printer is not connected to the network:

1. Touch the **Wireless** icon to open the **Wireless** menu. Select **Settings**, then **Wireless Setup Wizard**.
2. Follow the instructions on the screen.

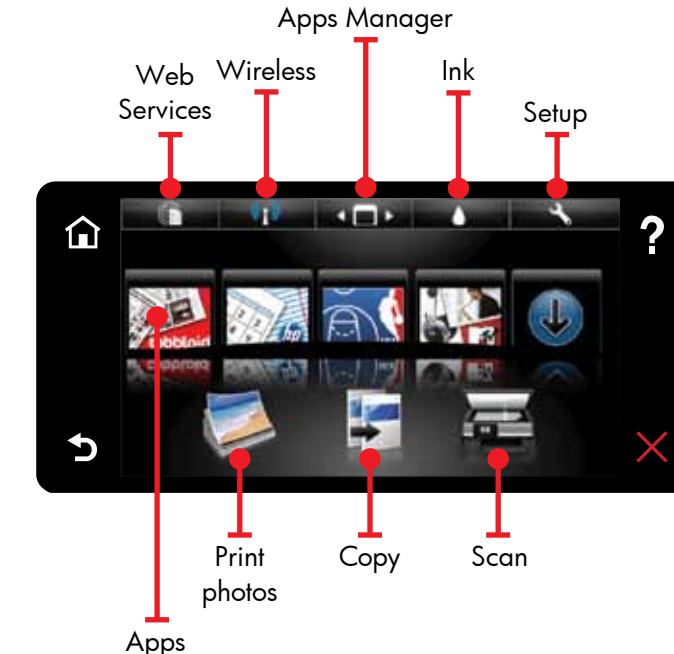
For more troubleshooting help, go to:
www.hp.com/go/wirelessprinting

Get to Know your Printer



- Print from memory card, USB drive, computer, or Web
- Copy 1-sided or 2-sided
- Scan to memory card, USB drive, or computer

Home Screen



Touch a button or icon to activate. Touch and flick to scroll the Apps arena.

Print Apps



Print the web, without using a computer.

Select Apps on the Home screen to print pages for the whole family. Use the Apps Manager to add more apps or remove them.

- Your printer needs to have a wireless network connection to the Internet. You won't be able to use Apps via a USB connection to a computer.
- Add more apps from the web. Print coupons, recipes, maps, news, coloring pages, and more!
- Free product updates are provided. Updates may be required to enable certain functionality.

Readme File

The **Readme** file has HP support contact details, operating system requirements, and the most recent information update.



To find the European Union Regulatory Notice statement and compliance information, go to the onscreen Help, click **Technical information > Regulatory notices > European Union Regulatory Notice**.

The Declaration of Conformity for this product is available at: www.hp.eu/certificates.

Printed in [English]

© 2010 Hewlett-Packard Development Company, L.P.



CN517-90081

Get More Help



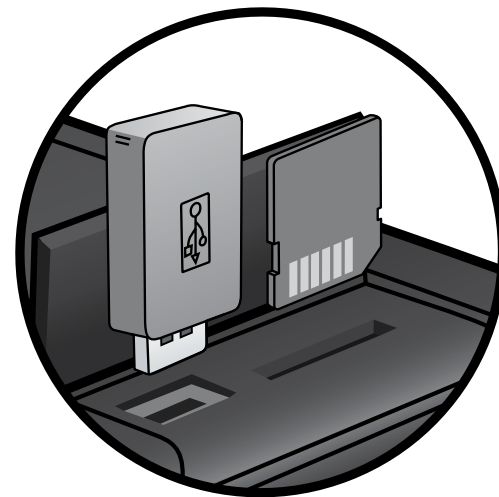
Onscreen Help is installed with the HP ENVY software.

Help includes details of features, troubleshooting, specifications, legal notices, environmental, regulatory, and support information, plus links to more information online on the Web.

To open onscreen Help from your computer:

- Windows XP, Vista, Win 7: Click **Start > All Programs > HP > ENVY 100 eAll-in-One D410 > Help**.
- Mac OS X v10.5 and v10.6: Click **Help > Mac Help**. In the **Help Viewer**. Choose **HP Product Help** from the **Mac Help** pop-up menu.

Print from USB or Memory Card



Print your photos without connecting to a computer. Just insert your memory card or USB drive into a slot on your HP ENVY¹⁰⁰ e-ALL-IN-ONE, select your photos, and start printing.

Print from Anywhere



HP's free ePrint service provides an easy way to print from email, anywhere and anytime. Just send an email to your printer's email address from your computer or mobile device, and both the email message and recognized attachments will print.

- See www.hp.com/go/ePrintCenter for availability and details.
- Your printer needs to have a wireless network connection to the Internet. You won't be able to use ePrint via a USB connection to a computer.
- Free product updates are provided with this service. Some updates may be required to enable certain functionality.

HP ePrintCenter



Use HP's free ePrintCenter website for the most up-to-date information about HP ePrint and Apps.

- Set up increased security for ePrint
- Specify the email addresses that are allowed to send email to your printer
- Get more Print Apps
- Access other free services
- Go to the ePrintCenter website for more information and specific terms and conditions: www.hp.com/go/ePrintCenter.



ENVY¹⁰⁰

Quick Reference