



HP E2520/E2615/E2915 Switch Power Supply Shelf Installation and Removal

HP J9701A Power Supply Shelf allows you to integrate the external power adapter with your switch. It is supported for use on the following switches:

- HP E2520-8-PoE Switch (J9137A)
- HP E2520G-8-PoE Switch (J9298A)
- HP E2615-8-PoE Switch (J9565A)
- HP E2915-8G-PoE Switch (J9562A)

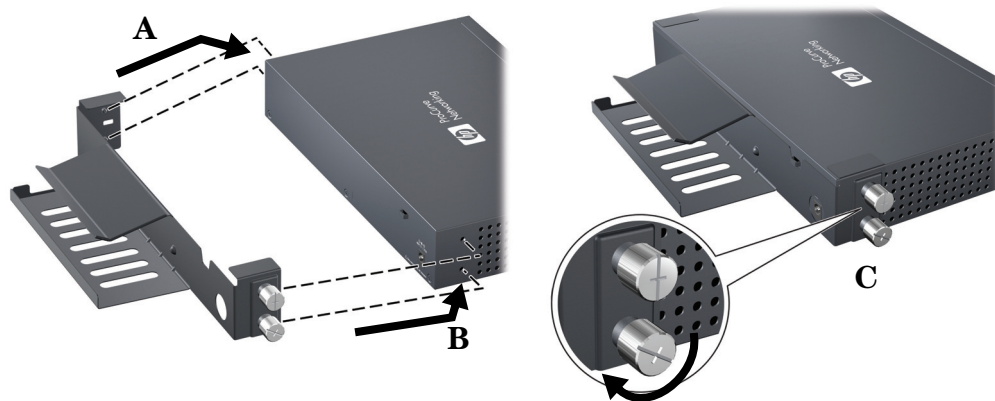
Note Prior to installing or removing the Power Supply Shelf, be sure the power adapter and all cables have been disconnected.

Installation

1. Align the shelf assembly with the switch in the orientation shown.

2. Insert two alignment pins on one side of the shelf into the appropriate holes on the switch (A).

3. Align the two thumbscrews on the other side of the shelf (B), and secure the shelf to the switch (C).



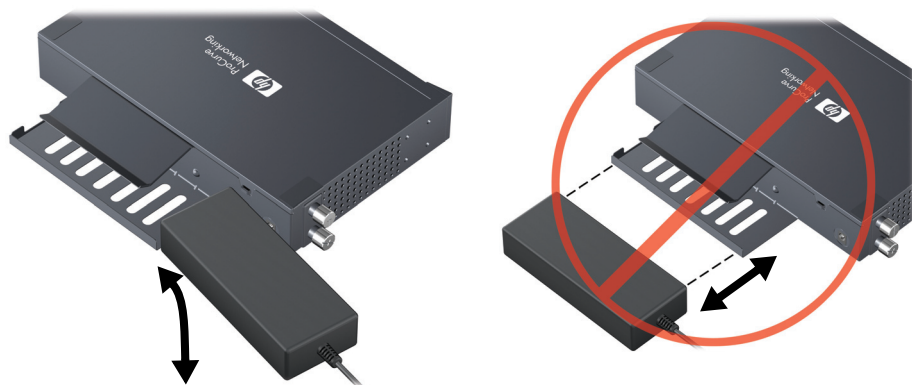
CAUTION:

Use caution when tightening the thumbscrews to the switch. Using excessive force may damage the thumbscrew or hole threads.

4. Slide the power adapter into the retention clip from the side as illustrated.

CAUTION:

Do not install or remove the adapter by lifting the clip and forcing the adapter directly into, or out of, the housing area.



Removal

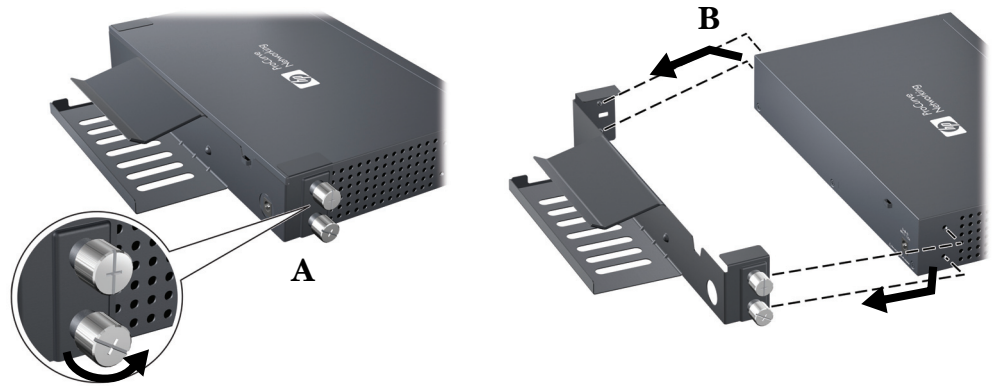
Note

Before removing the Power Supply Shelf from the switch:

- Disconnect and remove the power adapter and cables.
 - If a cable tie is used to secure the adapter power cord, it must be removed.
 - Be sure to remove the power adapter by sliding it out from the side of the retention clip.
-

1. Unfasten the two thumbscrews that attach the shelf assembly to the switch (**A**). Carefully slide this side off first.

2. Disengage the alignment pins on the other side of the shelf assembly (**B**), and slide the entire assembly away from the switch.



© Copyright 2011 Hewlett-Packard Development Company, L.P.
The information contained herein is subject to change without notice.

The only warranties for HP products and services are set forth in the express warranty statements accompanying such products and services. Nothing herein should be construed as constituting an additional warranty. HP will not be liable for technical or editorial errors or omissions contained herein.

Printed in China
February 2011

Manual Part Number: 5998-0561

