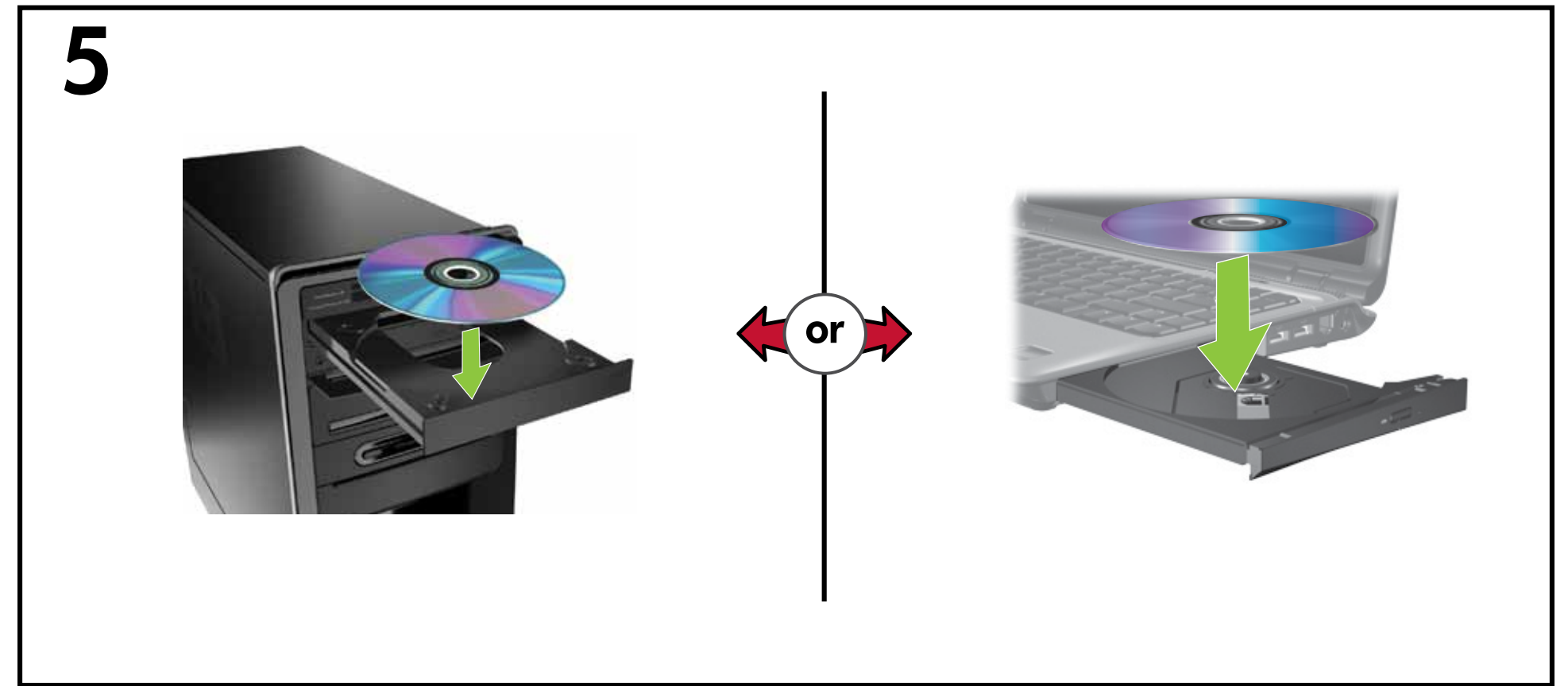
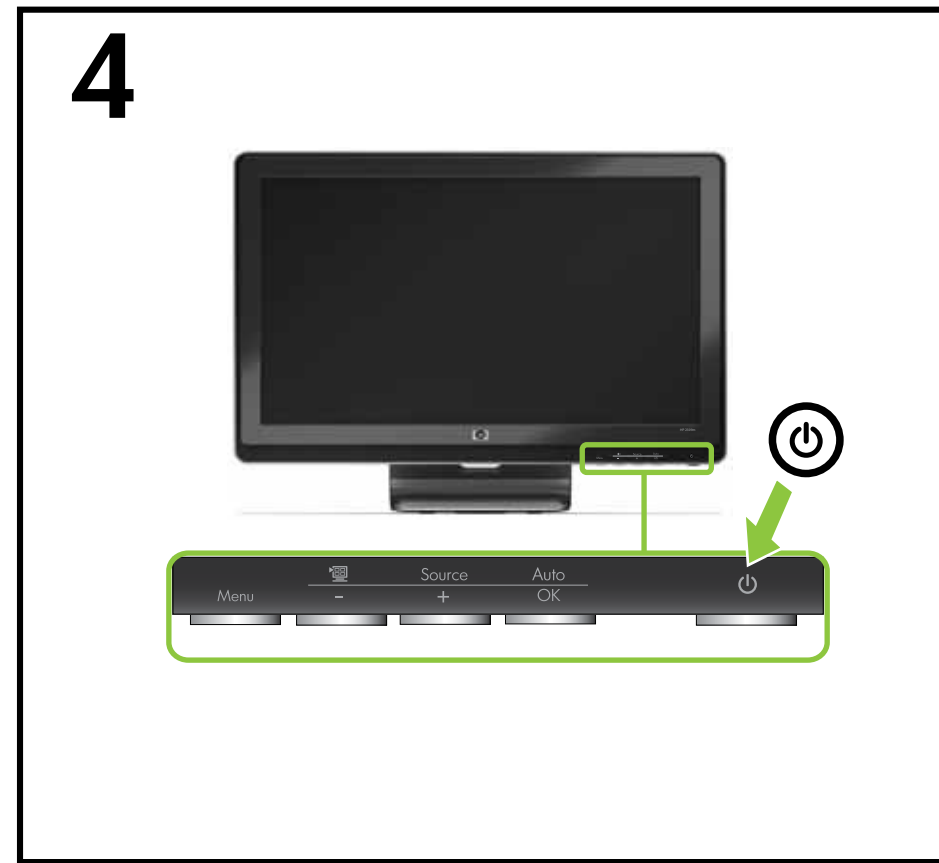
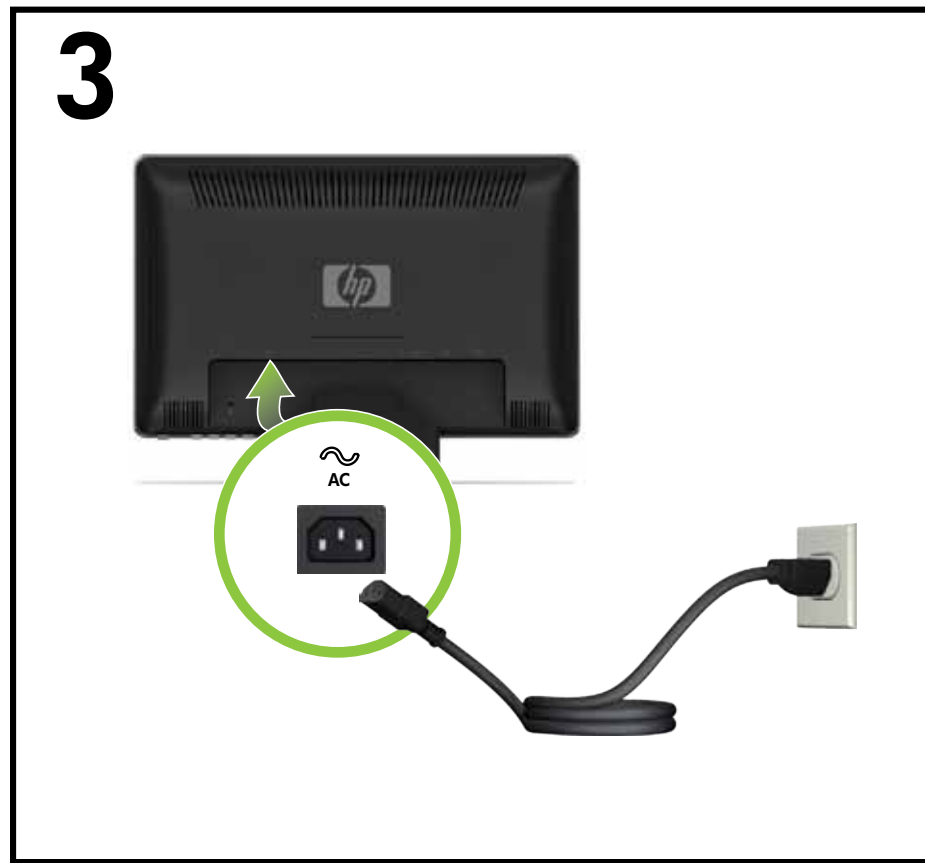
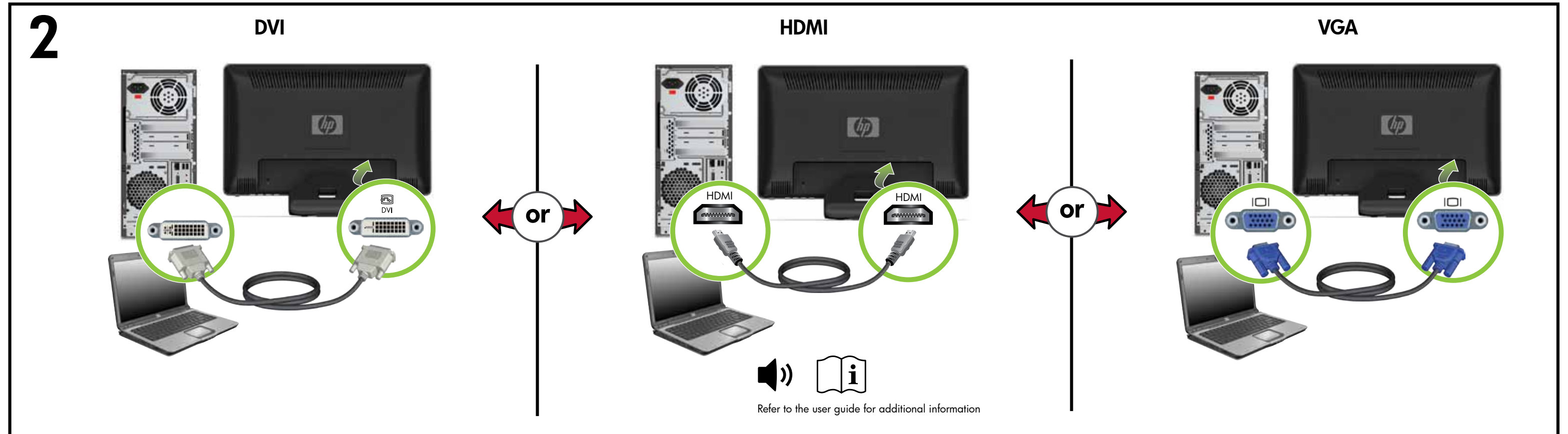
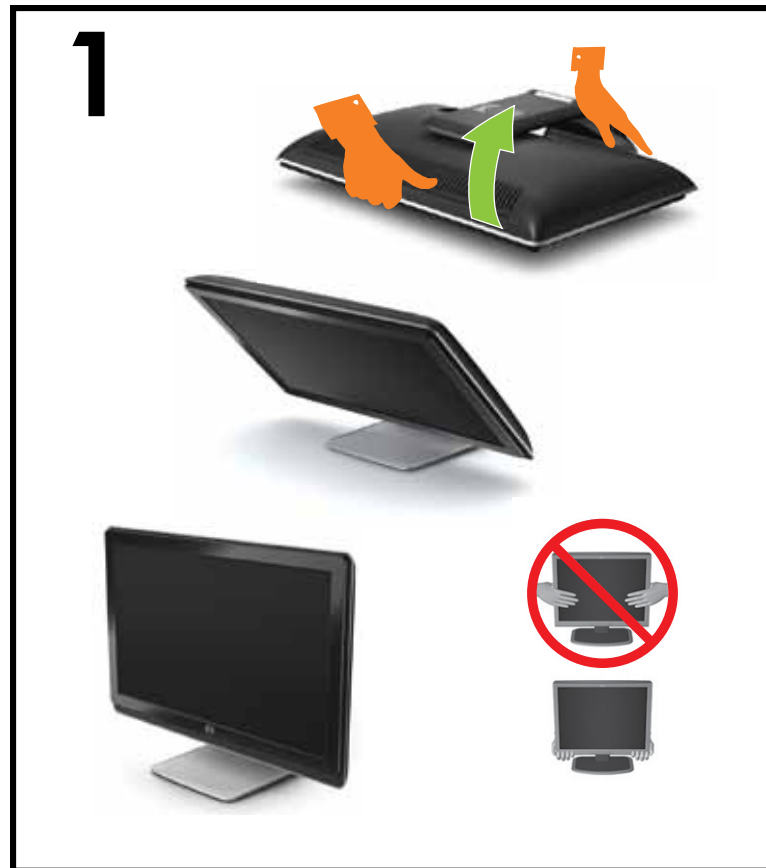




# HP 2509b LCD Monitor

Optimum Resolution 1920 x 1080 @ 60 Hz



Press to turn on monitor. Press to select viewing mode. Press to select video input. Monitor HDMI connector included on select models. Your PC must have an HDMI-compliant graphics card. Refer to the CD for setup, drivers, software, regulatory, safety and environmental notices.

You can find the expressly provided **HP Limited Warranty** applicable to your product in the start menu on your PC and/or in the CD/DVD provided in the box. For some countries/regions a printed HP Limited Warranty is provided in the box. In countries/regions where the warranty is not provided in printed format, you may request a printed copy from [hp.com/go/orderdocuments](http://hp.com/go/orderdocuments) or write to:

**North America:** Hewlett Packard, MS POD, 11311 Chinden Blvd, Boise, ID 83714, USA

**Europe, Middle East, Africa:** Hewlett Packard, POD, Via G. Di Vittorio, 9, 20063, Cernusco/Naviglio (MI), Italy

**Asia Pacific:** Hewlett Packard, POD, P.O. Box 200, Alexandra Post Office, Singapore 911507

Please include your product name, warranty period, name and postal address.

- WARNING:** To reduce the risk of electric shock or damage to your equipment:
- Do not disable the power cord grounding plug. The grounding plug is an important safety feature.
  - Plug the power cord in a grounded (earthed) outlet that is easily accessible at all times.
  - Disconnect power from the monitor by unplugging the power cord from the electrical outlet.



