



HP Easy Tools

Administrator's Guide

© Copyright 2010–2011 Hewlett-Packard Development Company, L.P. The information contained herein is subject to change without notice.

Microsoft and Windows are trademarks of Microsoft Corporation in the U.S. and other countries.

The only warranties for HP products and services are set forth in the express warranty statements accompanying such products and services. Nothing herein should be construed as constituting an additional warranty. HP shall not be liable for technical or editorial errors or omissions contained herein.

This document contains proprietary information that is protected by copyright. No part of this document may be photocopied, reproduced, or translated to another language without the prior written consent of Hewlett-Packard Company.

HP Easy Tools


Administrator's Guide


Second Edition (February 2011)

First Edition (October 2010)

Document Part Number: 628662–002

About This Book

 **WARNING!** Text set off in this manner indicates that failure to follow directions could result in bodily harm or loss of life.

 **CAUTION:** Text set off in this manner indicates that failure to follow directions could result in damage to equipment or loss of information.

 **NOTE:** Text set off in this manner provides important supplemental information.

If you have comments, feedback, or questions about this guide, please e-mail us at tc_software_docs@hp.com.

Table of contents

1 Introduction	1
2 HP Easy Tools for HP ThinPro	2
Easy Update	4
Updating an image	4
Updating options	6
Easy Config	9
Easy Deploy	17
Capturing an image	17
Deploying an image	19
Setting security	22
Thank You	23
3 HP Easy Tools for Microsoft® Windows® Embedded Standard (WES) 2009	24
Easy Update	26
Updating an image	27
Installing or upgrading a component	28
Uninstalling a component	30
Easy Config	31
Easy Deploy	39
Capturing an image	39
Deploying an image	41
Setting security	44
Thank You	45
4 HP Easy Tools for Microsoft® Windows® CE	46
Easy Update	48
Updating an image	48
Installing or upgrading a component	49
Uninstalling a component	50
Easy Config	52

Easy Deploy	60
Capturing an image	60
Deploying an image	62
Setting security	65
Thank You	66


5 HP Easy Tools for PC 67

Easy Config	67
-------------------	----

1 Introduction

HP Easy Tools is a wizard that helps you create a complete configuration to use on HP thin clients. Specific features vary by thin client operating system:

- [HP Easy Tools for HP ThinPro on page 2](#)
- [HP Easy Tools for Microsoft® Windows® Embedded Standard \(WES\) 2009 on page 24](#)
- [HP Easy Tools for Microsoft® Windows® CE on page 46](#)

 **NOTE:** On all platforms, if either HP Client Automation (HPCA) or HP Device Manager (HPDM) is active in the thin client network, HP Easy Tools is not necessary and HP recommends that you register the thin client with the relevant management system and take no action to start HP Easy Tools.

2 HP Easy Tools for HP ThinPro

HP Easy Tools opens automatically unless HP Client Automation (HPCA), HP Device Manager (HPDM), or HP System Update services are running. To prevent HP Easy Tools from autolaunching, select **Do not auto-start HP Easy Setup Wizard** when the following screen appears while the application is booting.



The HP Easy Tools window has three main parts:

- **Left Pane**

All configuration settings categories are listed in the left pane. The HP Easy Tools wizard leads you through each category, but if you want to jump forward or backward, just click the category in the left pane. Sections that have been viewed are marked by a gray check mark. Sections that have been modified are marked by a green check mark.

- **Center Pane**

When you advance to or select a category in the left pane, the configuration options appear in the center pane. Click on one to open the configuration work area.


- **Right Pane**

As you select a category and a specific setting, descriptions of the category and the specific setting appear in the right pane.

HP Easy Tools has four sections:

- [Easy Update on page 4](#)—This section enables you to install and maintain official HP images and softpaqs.
- [Easy Config on page 9](#)—Configure thin clients and software in this section.

- [Easy Deploy on page 17](#)—Use this section to capture and deploy images, settings, and configurations and set administrative passwords.
- [Thank You on page 23](#)


 **NOTE:** If a Write Filter is enabled on the thin client, you will not be able to apply a new configuration until you disable the Write Filter.

You can also access HP Easy Tools through the HP ThinPro Control Center:

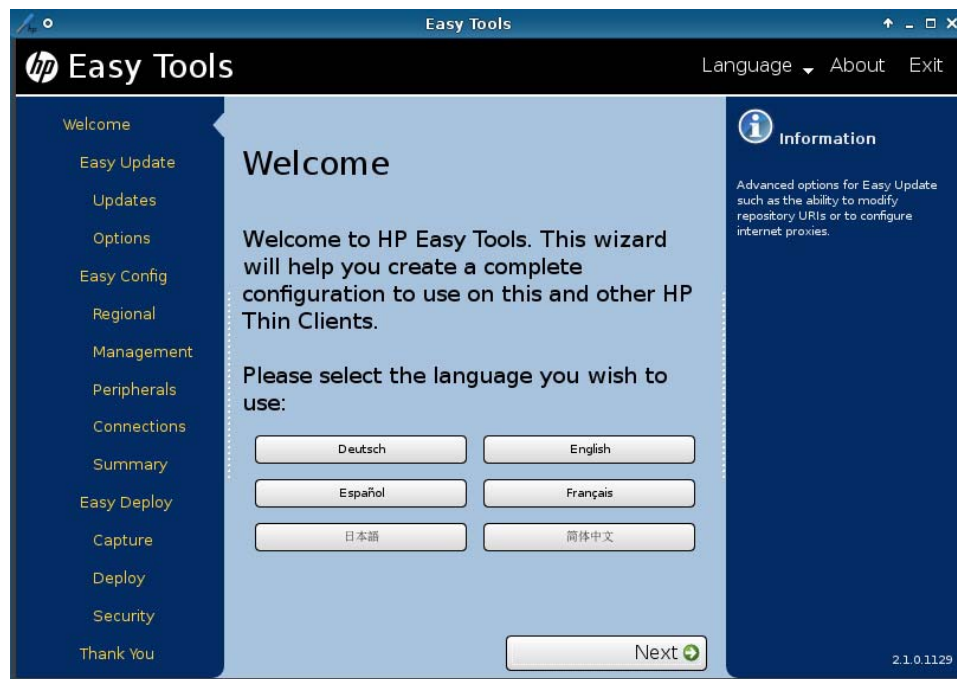
1. Switch to Administrator Mode.

To switch to Administrator Mode:


- a. Position your cursor in the screen background and right-click.
- b. Select **Administrator/User Mode Switch**.

 **NOTE:** The default Administrator password is `root`.

2. If neither HPCA nor HPDM is active on the network, click the **Easy Tools** wizard icon in the left pane of the ThinPro Control Center.



3. Select the language you wish to use and click **Next**.

 **NOTE:** You may click **Language** in the black bar across the top of the HP Easy Tools screen and change the language at any time during your session.

Easy Update

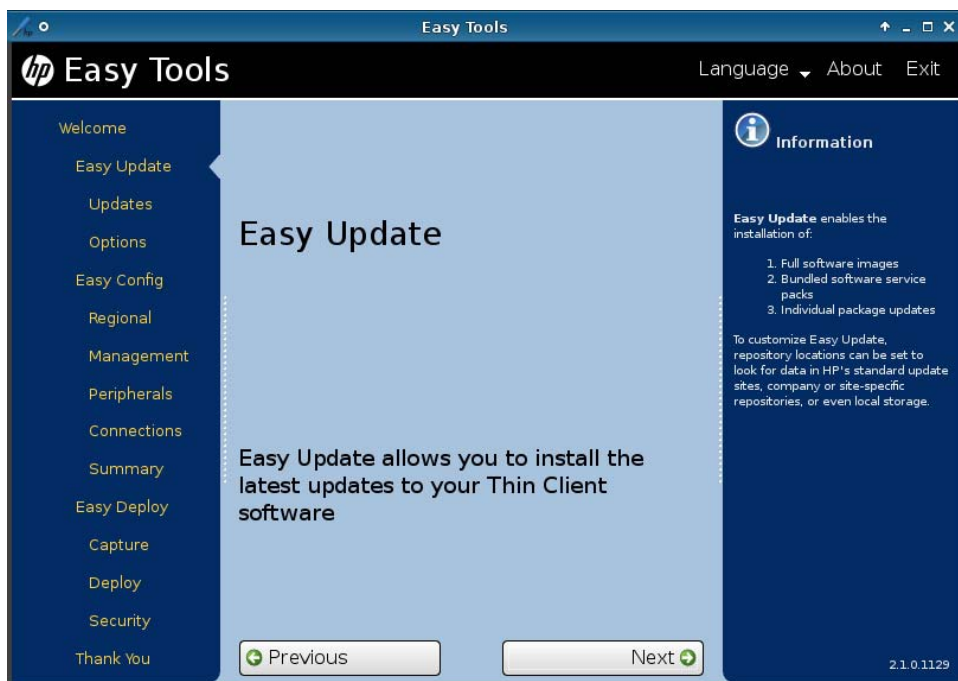
Easy Update allows you to perform the following tasks:

- [Updating an image on page 4](#)
- [Updating options on page 6](#)

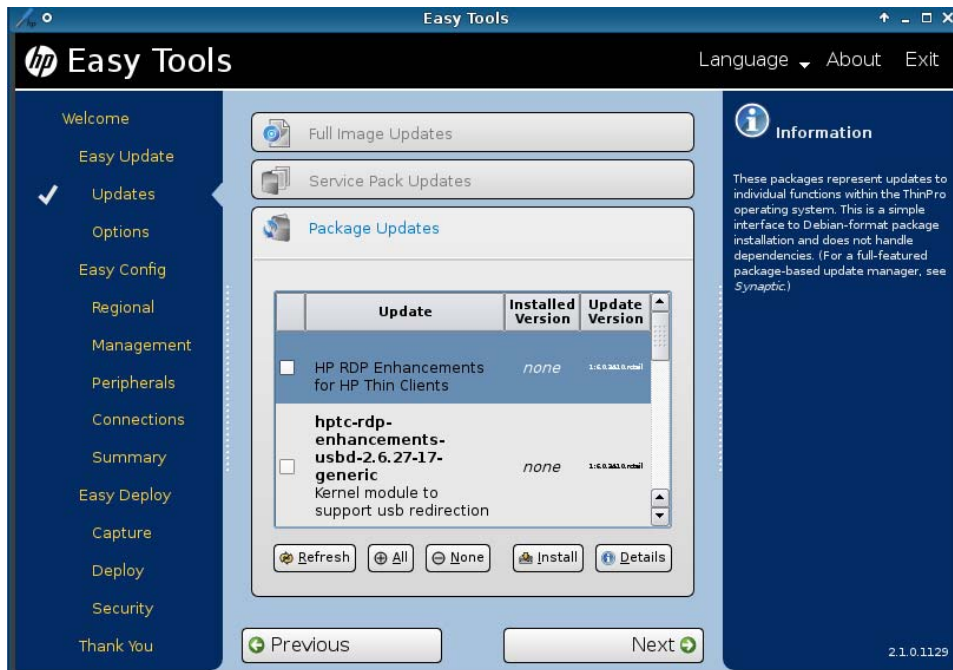
Updating an image

 **NOTE:** Internet connectivity is required to download images or AddOns from HP repositories.

1. Open **HP Easy Tools**.
2. Click **Easy Update** in the left pane to begin configuring the thin client.



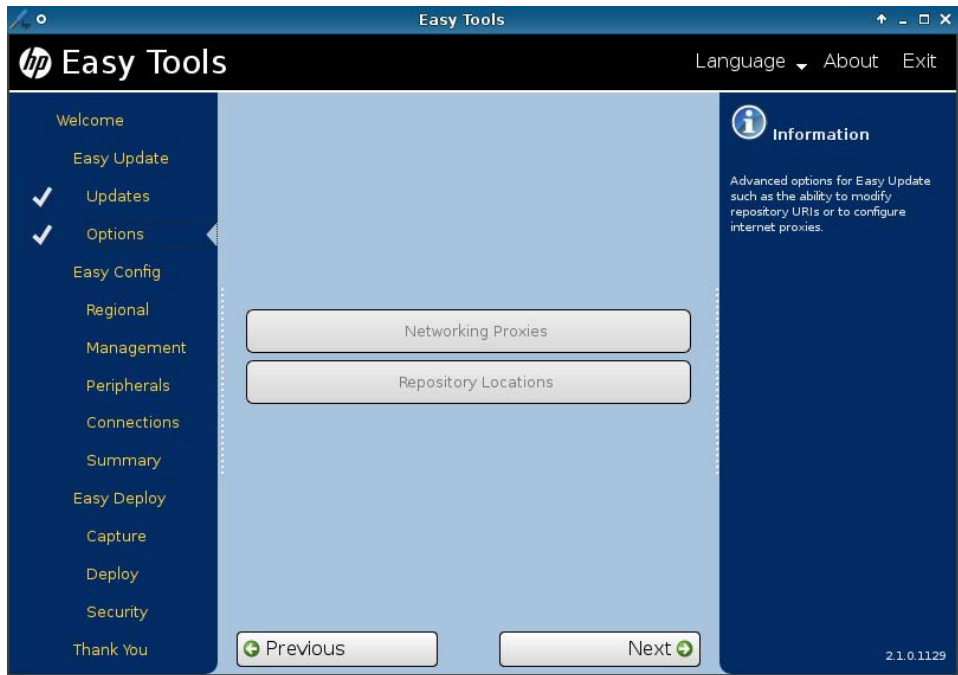
3. Click **Next** to advance to **Updates**.



4. Select the type of updates to install:
 - **Full Image Updates**
 - **Service Pack Updates**
 - **Package Updates**
5. To install a full image update:
 - a. Select the image to install.
 - b. Click **Details** for information on a selected update.
 - c. Click **Install** to install the update.
6. To install a service pack update:
 - a. Select the service pack update to install.
 - b. Click **Details** for information on a selected update.
 - c. Click **Install** to install the update.
7. To install a package update:
 - a. Select the package update(s) to install. Click **All** to select all updates or **None** to clear all selections.
 - b. Click on an update to highlight it and click **Details** for information on the update.
 - c. Click **Install** to install the selected updates.

Updating options

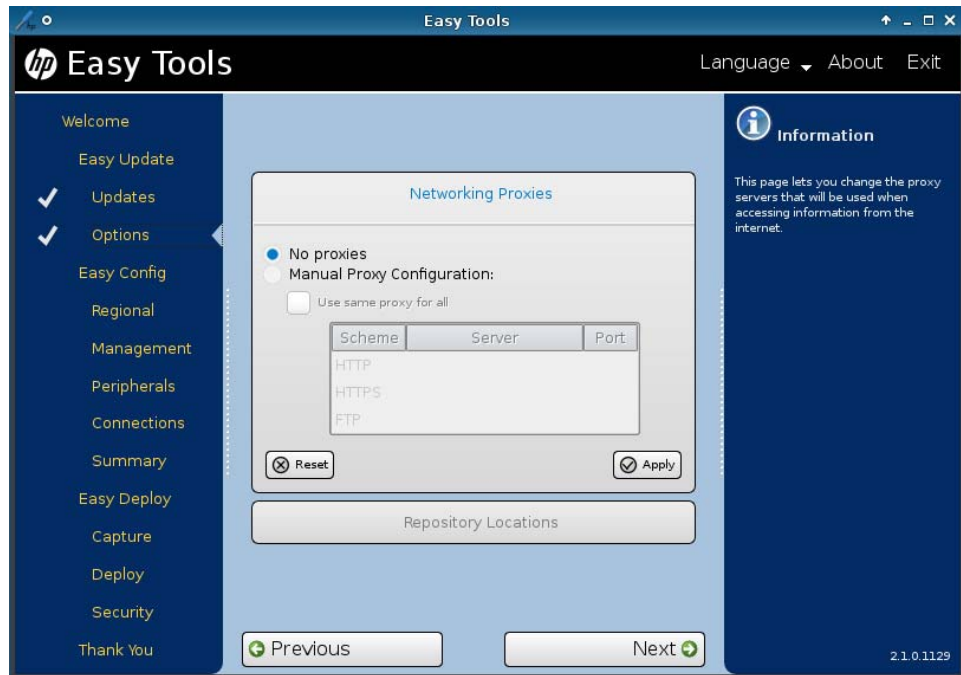
1. Open **HP Easy Tools**.
2. In the left pane, click **Options** under **Easy Update** to begin updating options.



3. Select **Networking Proxies** or **Repository Locations**.

To set **Networking Proxies** manually:

- a. Select **Manual Proxy Configuration**, then click in the appropriate column and row and type the server address and port number.



For example, click under **Server** next to **HTTP** to open the HTTP server field.

- b. Click **Apply** to save the setting.

To set **Repository Locations**:

- a. Select **Repository Locations** and type over any URI to replace it.



- b. Click **Apply** to save the setting.

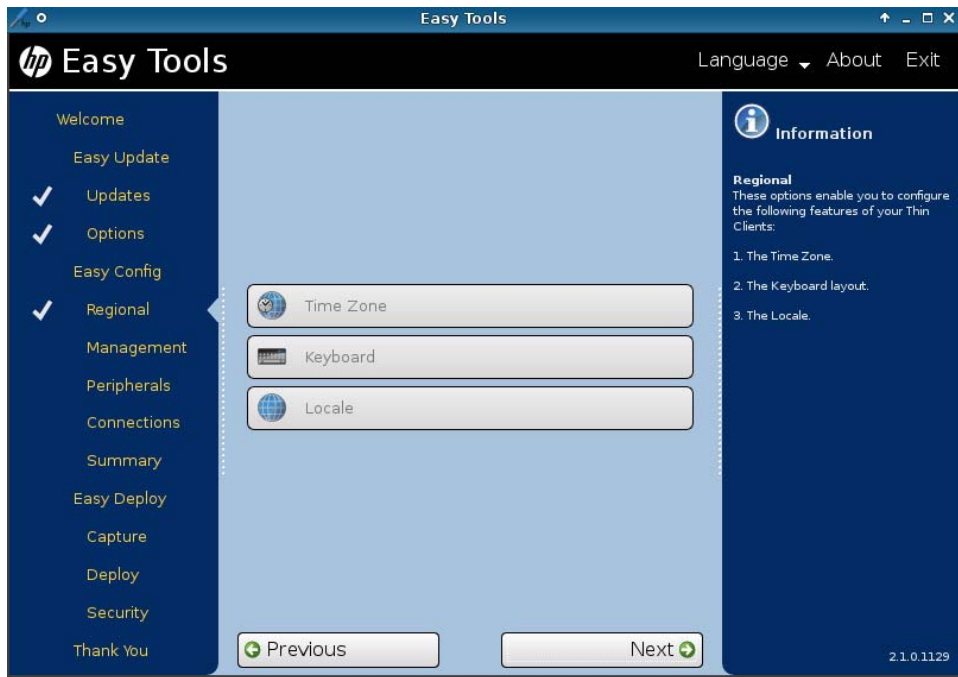
Easy Config

The Easy Config section allows you to configure a variety of features:

- Step [3](#) **Regional** options
 - Step [5](#) **Management** options
 - Step [7](#) **Peripherals**
 - Step [9](#) **Connections**
 - Step [12](#) **Summary**
1. Open **HP Easy Tools**.
 2. Click **Easy Config** in the left pane to begin configuring the thin client.



3. Click **Next** to advance to **Regional** options:




4. Configure the **Regional** options:

a. Time Zone

Select a geographical area and city or region in the desired time zone.

b. Keyboard

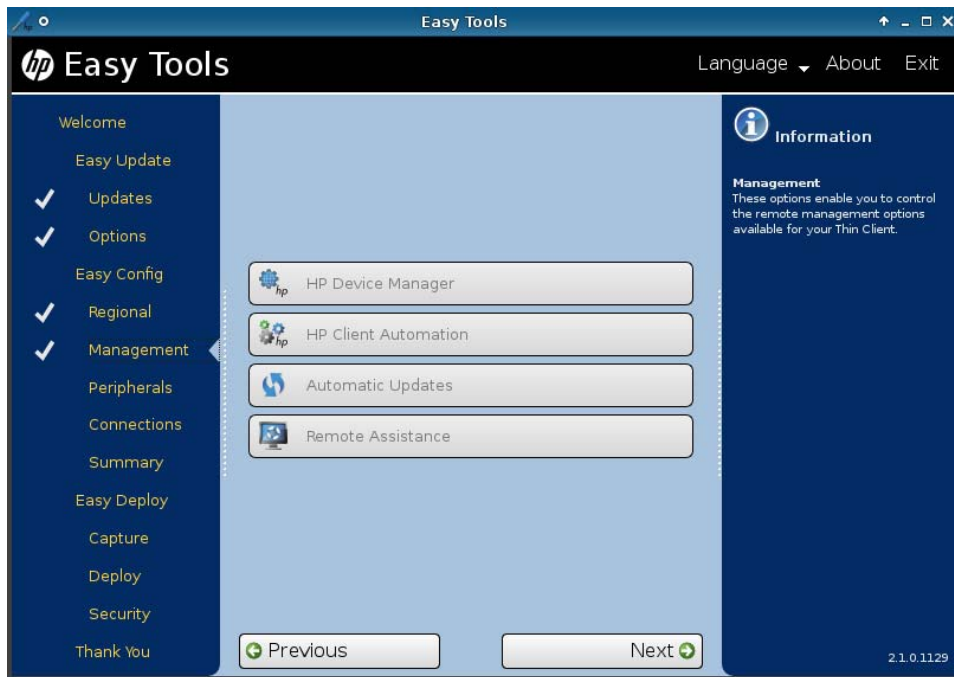
Select a keyboard layout.

 **NOTE:** The keyboard language does not have to match the keyboard you are using to complete the Easy Tools wizard.

c. Locale

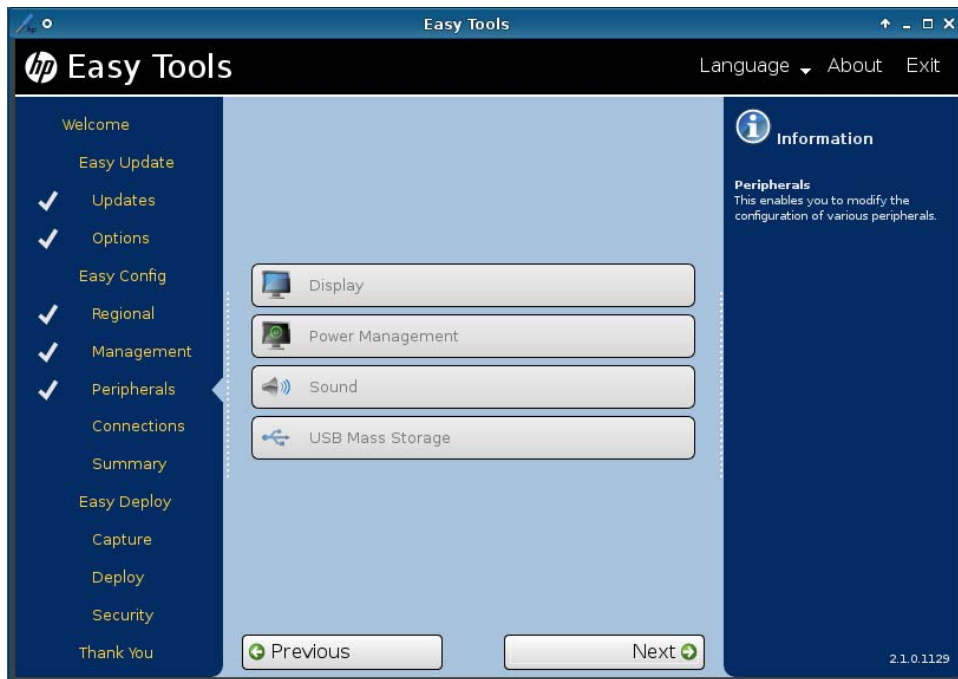
Select a language. Selecting a new locale (language) will change the system language and the format used for dates and currency.

5. Click **Next** to advance to **Management** options.



6. Enable one or more of the **Management** options or clear the check box to disable options.
 - **HP Device Manager**
 - **HP Client Automation**
 - **Automatic Updates**
 - **Remote Assistance**

7. Click **Next** to advance to **Peripherals**.



8. Configure the **Peripherals**:

- a. **Display**

(Required) Set the following parameters:

- **Resolution**—Select the monitor resolution.
- **Color depth**—Select a specific color depth supported by the monitor and the software.
- **Refresh rate**—HP recommends leaving this set to **auto**. LCD monitors typically support 60 Hz. CRT monitors display better at higher refresh rates, but that may shorten the life of the monitor and can cause noise.
- **Multi-monitor mode**—Select the screen arrangement for multiple monitors (for up to four monitors).
- **Primary monitor**—Select the primary monitor, if more than one monitor will be used.

- b. **Power Management**

Type or select the number of minutes in the **Screen saver on** field. After this specified period of inactivity, the screen saver is displayed.

- c. **Sound**

Select **Enable** to allow sound or clear the check box to keep it switched off.

Select **Hide volume control** to hide the volume controls or leave the check box clear to leave the controls visible.

d. USB Mass Storage

- Select **Enable Automounts** to enable USB ports, or leave the check box clear to keep USB ports disabled.
- Select **Read-Only Automounts** to prevent data from being copied to a USB mass storage device.

9. Click **Next** to advance to **Connections**.



NOTE: If you have not yet added a remote connection, this screen will show **No remote connection**. Proceed to step [11](#) to add a remote connection.

10. Select a connection to make changes to it:

- Select **Enable kiosk mode** to restrict the GUI to the Connection Manager. The taskbar and the Control Panel are disabled.
- Click the delete icon to the right of the connection name to delete the connection.
- Click the edit icon to edit the connection.

11. To add a connection, click **New remote connection**.



Several types of connections may be added:

NOTE: You can have multiple connections. If you enable **Auto start connection**, the connection will start automatically when the thin client is started, and the thin client will stay connected while the thin client is on. The user's work flow may not require all of the connections to be connected all of the time, and it will improve the overall performance of the thin client if unused connections are not connected.

- **Classics**

- **RDP**

1. Type the connection name and the server hostname or IP address in the fields.
2. Select **Auto start connection**, if desired.
3. Click **Save** to save the configuration.

- **ICA**

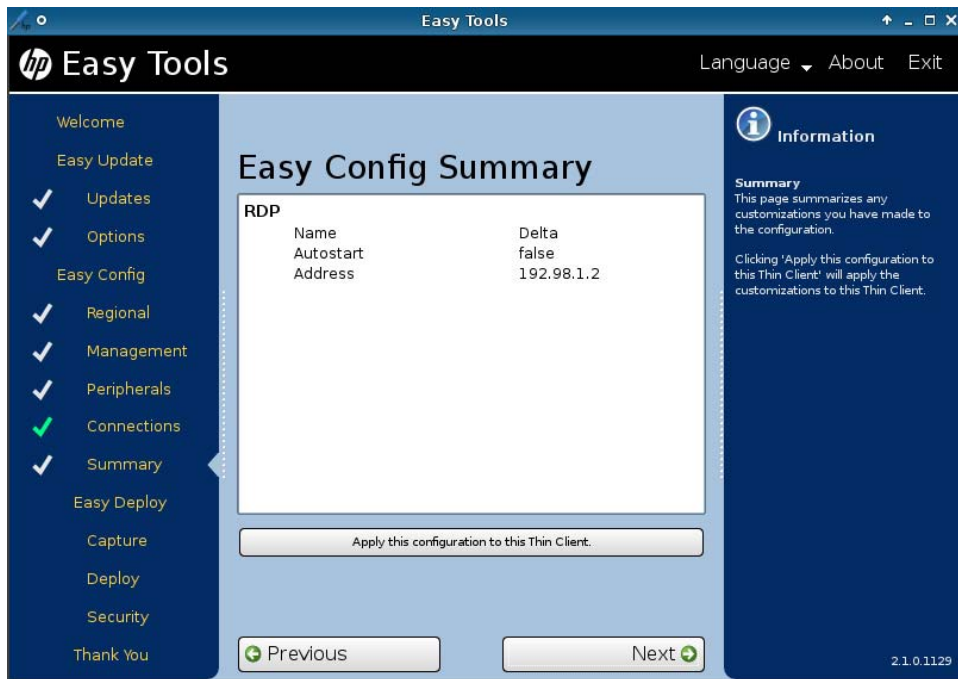
1. Type the connection name and the server hostname or IP address in the fields.
2. Select **Auto start connection**, if desired.
3. Select **Enable HTTPS proxy**, if desired.
4. If you enable the HTTPS proxy, type the HTTPS proxy server hostname or IP address and port number in the fields.
5. Click **Save** to save the configuration.

- **TeemTalk**

1. Type the connection name in the field.
2. Select the **Emulation** device.

3. Select and configure the data **Transport** protocol.
 4. Select **Auto start connection**, if desired.
 5. Click **Save** to save the configuration.
- **Web Browser**
 1. Type the connection name and the URL in the fields.
 2. Select **Auto start connection**, if desired.
 3. Select **Enable proxy**, if desired.
 4. If you enable the proxy, type the proxy server hostname or IP address and port number in the fields.
 5. Click **Save** to save the configuration.
 - **CDA mode**
 1. Select **Enable CDA Mode**, if desired.
 2. Type the URL in the field.
 3. Click **Save** to save the configuration.
- **VDI connection brokers**
 - **VMware View**
 1. Type the connection name and the URL in the fields.
 2. Select **Auto start connection**, if desired.
 3. Click **Save** to save the configuration.
 - **XenApp**
 1. Type the connection name and the URL in the fields.
 2. Select **Auto start connection**, if desired.
 3. Click **Save** to save the configuration.

12. Click **Next** to advance to the **Summary**.



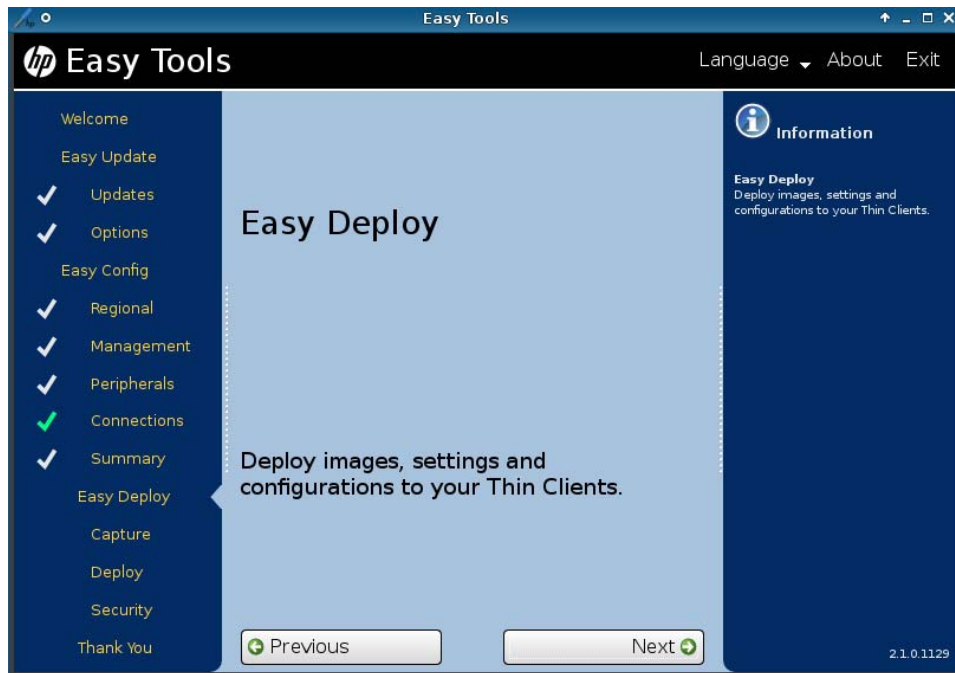
13. Review the **Easy Config Summary**. If it is correct, click **Apply this configuration to this Thin Client**.

Easy Deploy


The Easy Deploy section allows you to carry out the following functions:

- [Capturing an image on page 17](#)
- [Deploying an image on page 19](#)
- [Setting security on page 22](#)

1. Open **HP Easy Tools**.
2. Click **Easy Deploy** in the left pane to go to the **Easy Deploy** section.



Capturing an image

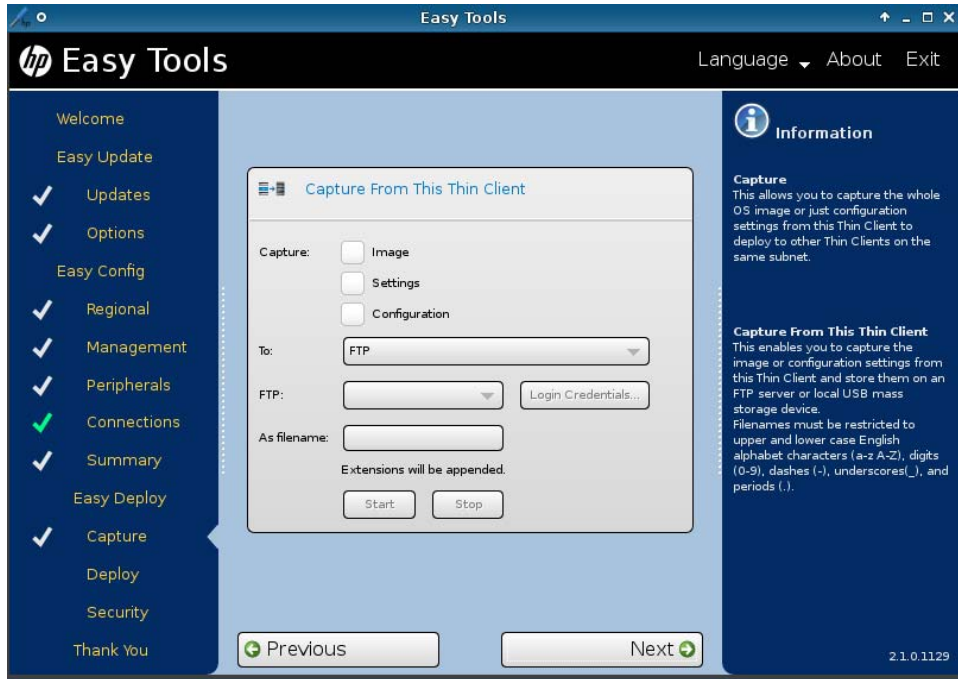
 **NOTE:** You may need a USB mass storage device for this procedure. The USB device capacity must be larger than the thin client flash in order to capture the entire flash contents. Images larger than 4 GB cannot be captured to a USB device.

Use this procedure to capture one of the following:

- **Image**—The operating system plus all settings and configuration
- **Settings**—The basic configuration settings plus additional advanced settings
- **Configuration**—The basic configuration settings you can set in Easy Config:
 - **Regional**
 - **Management**

- **Peripherals**
- **Connections**

1. Open **HP Easy Tools**.
2. In the left pane, click **Capture** under **Easy Deploy** to begin capturing an image.



3. Click **Capture From This Thin Client** and select what you want to capture:
 - **Image**
 - **Settings**
 - **Configuration**
4. Select the destination for the captured information:
 - **FTP**
 - **USB**
5. Type the FTP address and Login Credentials or the USB identity in the appropriate fields.
6. Type a name in the **As filename** field

Filenames must be restricted to upper and lower case English alphabet characters (a-z A-Z), digits (0-9), dashes (-), underscores (_), and periods (.).
7. Click **Start**.

Deploying an image

Use this procedure to deploy one of the following:

- **Image**—The operating system plus all settings and configuration
 - **Settings**—The basic configuration settings plus additional advanced settings
 - **Configuration**—The basic configuration settings you can set in Easy Config:
 - **Regional**
 - **Management**
 - **Peripherals**
 - **Connections**
1. Open **HP Easy Tools**.
 2. In the left pane, click **Deploy** under **Easy Deploy** to begin deploying an image.
 3. Select the deployment task:
 - **Deploy To This Thin Client**
 - **Deploy To Other Thin Client**
 4. To **Deploy To This Thin Client**:



a. Select what you want to deploy:

- **Image**
- **Settings**
- **Configuration**

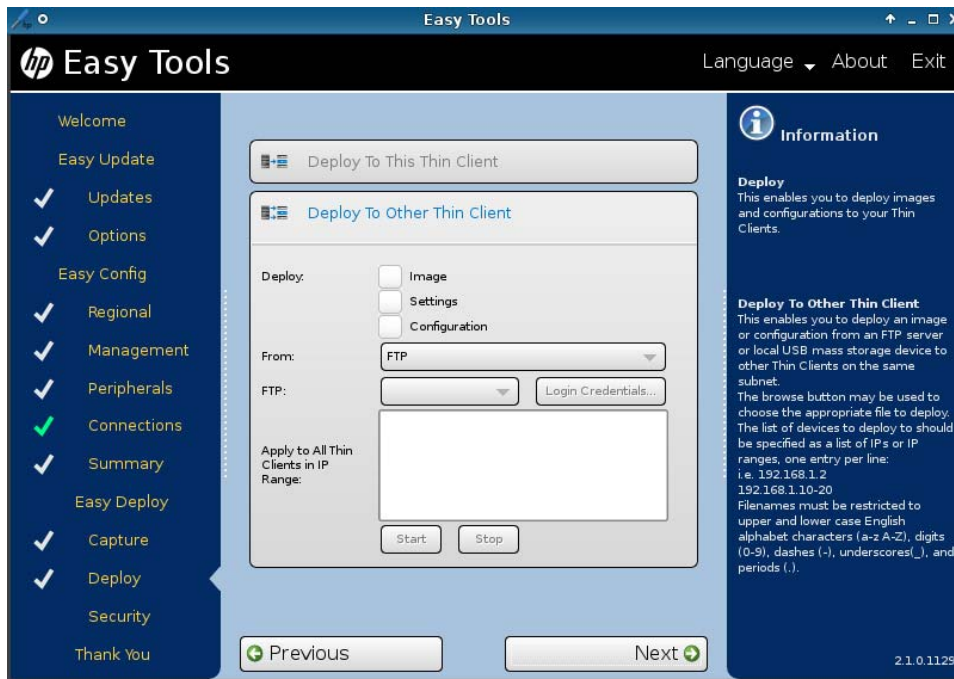
b. Select the location of the information:

- **FTP**
- **USB**

The browse button may be used to choose the appropriate file to deploy. Filenames must be restricted to upper and lower case English alphabet characters (a-z A-Z), digits (0-9), dashes (-), underscores (_), and periods (.).

c. Type the FTP address and Login Credentials or the USB mass storage device identity in the appropriate fields and click **Start** to begin deployment.

5. To **Deploy To Other Thin Client**:



a. Select what you want to deploy:

- **Image**
- **Settings**
- **Configuration**

b. Select the location of the information:

- **FTP**
- **USB**

c. Type the FTP address and Login Credentials or the USB mass storage device identity in the appropriate fields.

d. Identify the thin clients to which the image, settings, or configuration is to be deployed.

This enables you to deploy an image or configuration from an FTP server or local USB mass storage device to other thin clients on the same subnet.

The browse button may be used to choose the appropriate file to deploy. The list of devices to deploy to should be specified as a list of IPs or IP ranges, one entry per line; for example:

- 192.168.1.2
- 192.168.1.10-20

Filenames must be restricted to upper and lower case English alphabet characters (a-z A-Z), digits (0-9), dashes (-), underscores (_), and periods (.).

e. Click **Start** to begin deployment.

Setting security

This enables you to set passwords on this thin client and on other thin clients on the same subnet.

1. Open **HP Easy Tools**.
2. In the left pane, click **Security** under **Easy Deploy** to set an administrator password.




3. Type the current password in the field.
4. Type the new password in the **New Password** and **Confirm Password** fields.

The list of devices to set passwords to should be specified as a list of IPs or IP ranges, one entry per line; for example:

- 192.168.1.2
- 192.168.1.10-20

5. If desired, select **Deploy Administrator Password to other Thin Clients**.

 **NOTE:** You can only deploy the administrator password to thin clients that have the same current password.

6. Click **Apply New Password**.

Thank You

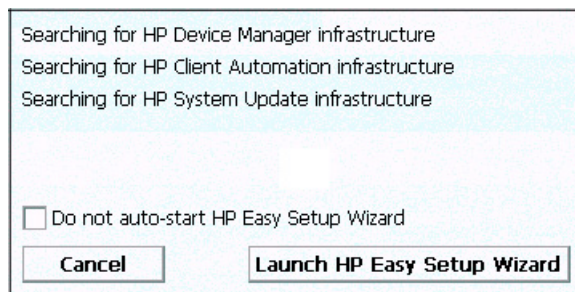
1. Click **Thank You** in the left pane to advance to the **Thank You** section.



2. Click **Finish** to close the HP Easy Tools wizard.
3. Reboot the thin client.
4. Check the thin client to be sure it operates as expected before copying this configuration to other thin clients.

3 HP Easy Tools for Microsoft® Windows® Embedded Standard (WES) 2009

HP Easy Tools does not open if HP Client Automation (HPCA), HP Device Manager (HPDM), or HP System Update services are running. To prevent HP Easy Tools from autolaunching, select **Do not auto-start HP Easy Setup Wizard** when the following screen appears while the application is booting.



The HP Easy Tools window has three main parts:

- **Left Pane**

All configuration settings categories are listed in the left pane. The HP Easy Tools wizard leads you through each category, but if you want to jump forward or backward, just click the category in the left pane. Sections that have been viewed are marked by a gray check mark. Sections that have been modified are marked by a green check mark.

- **Center Pane**


When you advance to or select a category in the left pane, the configuration options appear in the center pane. Click on one to open the configuration work area.

- **Right Pane**

As you select a category and a specific setting, descriptions of the category and the specific setting appear in the right pane.

HP Easy Tools for WES 2009 has four sections:

- [Easy Update on page 26](#)—This section enables you to install and maintain official HP images and softpaqs.
- [Easy Config on page 31](#)—Configure thin clients and software in this section.
- [Easy Deploy on page 39](#)—Use this section to capture and deploy images, settings, and configurations and set administrative passwords.
- [Thank You on page 45](#)


 **NOTE:** If a Write Filter is enabled on the thin client, you will not be able to apply a new configuration until you disable the Write Filter.

You must be logged on as administrator to use HP Easy Tools. To access HP Easy Tools:

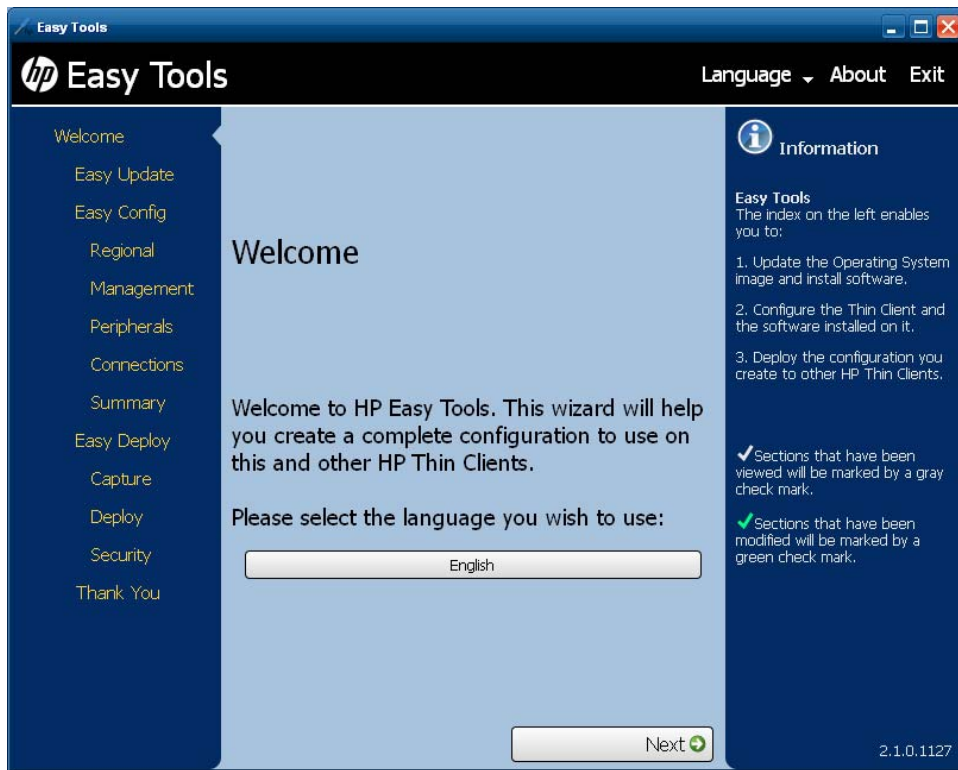
1. Log on as administrator.

To access the Administrator logon:


- a. While holding down the **Shift** key, click **Start > Shut Down**.
- b. Still holding down the **Shift** key, select **Log Off**, and then click **OK** in the **Shut Down** dialog box.

 **NOTE:** The default Administrator user name and password is Administrator.

2. Click **Start**. Select **Control Panel** and click the **HP Easy Tools** icon.



3. Select the language you wish to use.

 **NOTE:** If the system language is English, then the only choice is English. If the system language is not English, then you may choose the system language or English.


You may click **Language** in the black bar across the top of the HP Easy Tools screen and change the language at any time during your session.

Easy Update

Easy Update allows you to perform the following tasks:

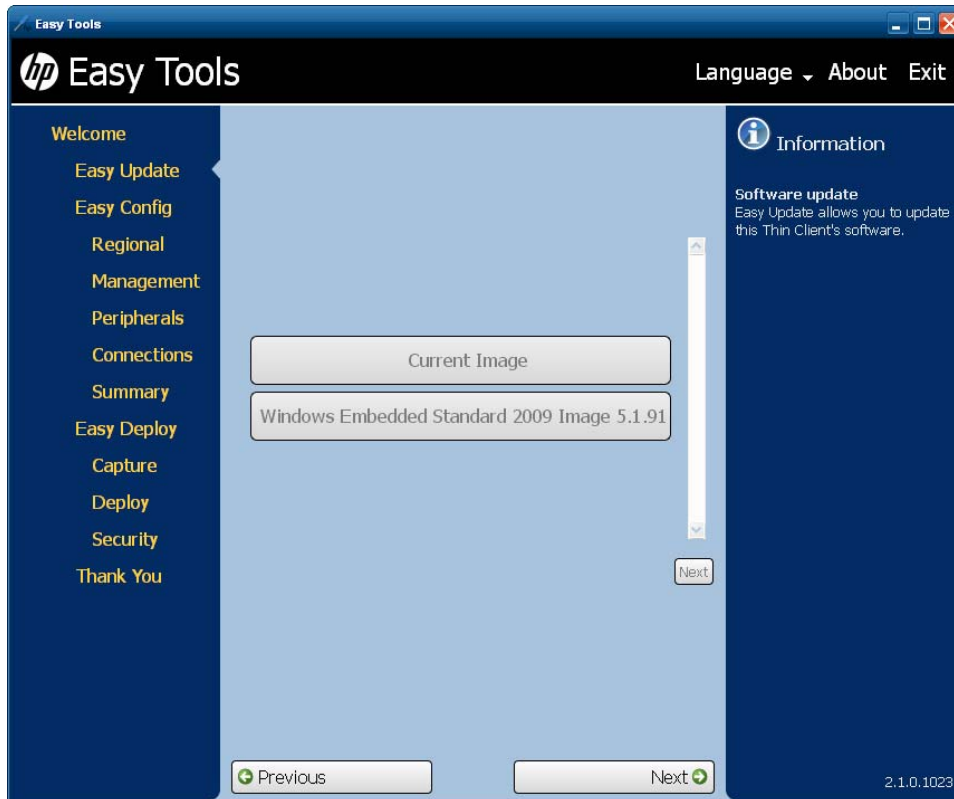
- [Updating an image on page 27](#)
- [Installing or upgrading a component on page 28](#)
- [Uninstalling a component on page 30](#)

Updating an image

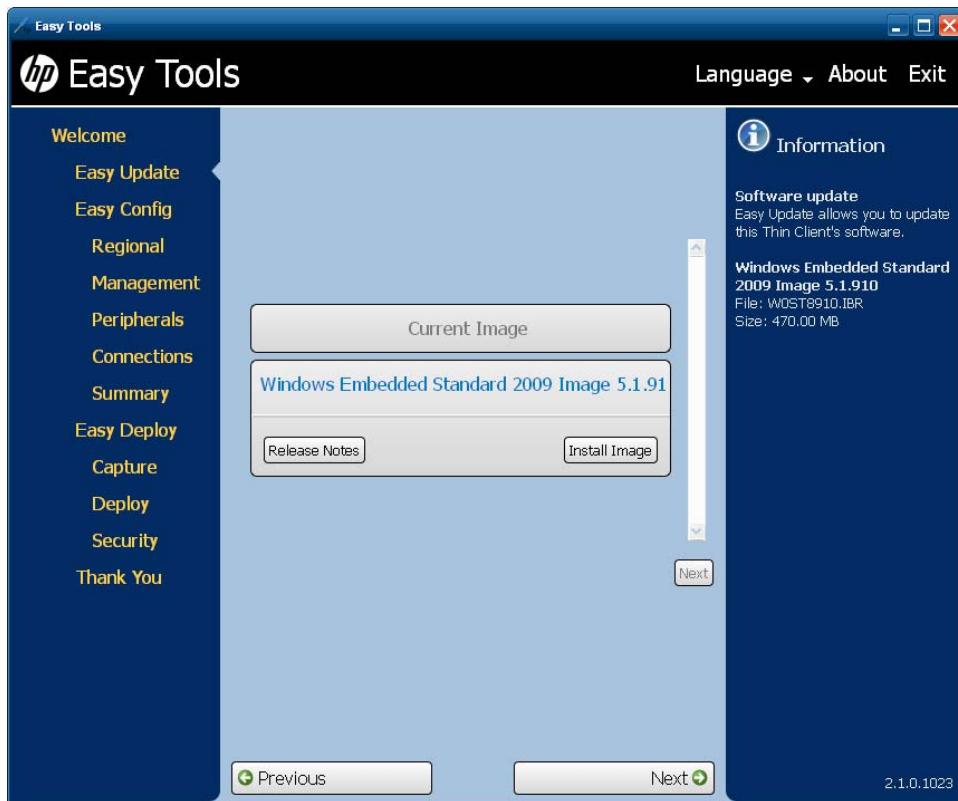
 **NOTE:** Internet connectivity is required to download images or AddOns.


You will need a USB mass storage device to update images. The USB device capacity must be larger than the image file to be downloaded plus 110 MB. For example, if the image file to be downloaded is 200 MB, the USB mass storage device must have a minimum capacity of 310 MB.

1. Open **HP Easy Tools**.
2. Click **Easy Update** in the left pane to begin updating the thin client.




3. Click on the WES 2009 Image version that you would like to install.



 **NOTE:** Not all versions of WES 2009 have Easy Tools to update the image.

4. Click **Install Image** to install the image.
5. Read the terms of the license agreement. Accept them and click **Next**.

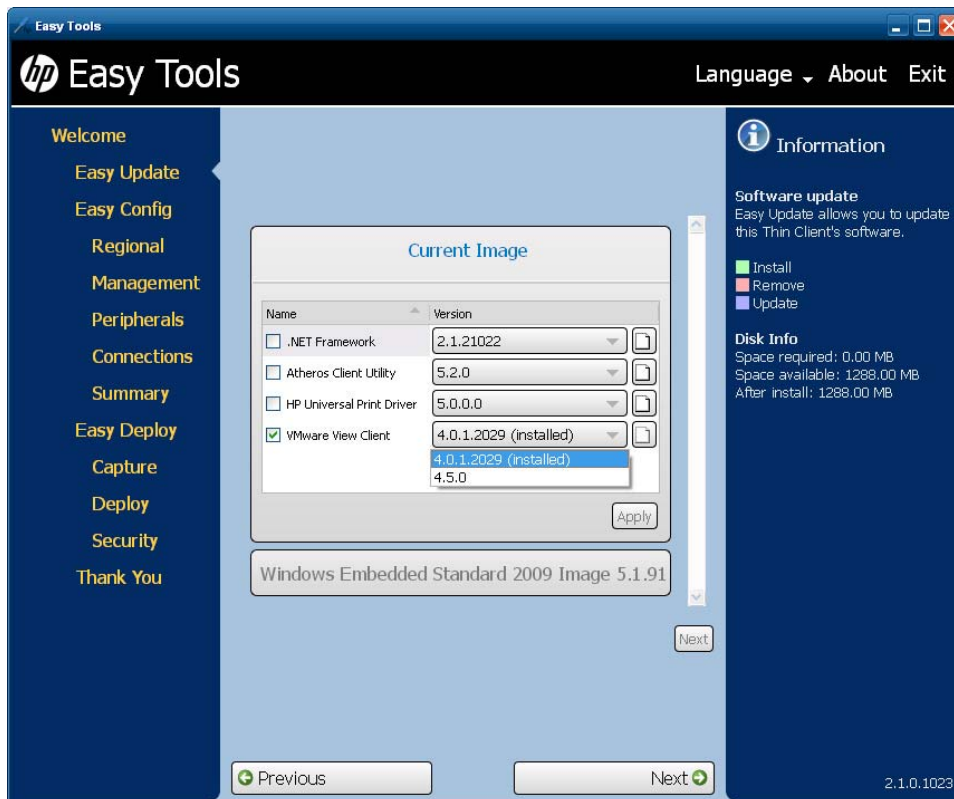
 **NOTE:** You must accept the terms of the license agreement in order to proceed.

6. Insert the USB mass storage device when instructed to do so and following the on-screen instructions to create a bootable USB mass storage device containing the selected image. The image can then be deployed using the USB mass storage device.

Installing or upgrading a component


1. Open **HP Easy Tools**.
2. Click **Easy Update** in the left pane to begin installing or upgrading a component.

3. Click **Current Image** to expand it.




Installed software has a check mark to the left of the name and the version is listed as **(installed)**.

4. Select the actions to be taken.

 **NOTE:** You can select multiple install, update, and remove actions. If installation problems arise from having multiple selections, however, try selecting only one operation at a time.

- **Install**—Select updates to install. Click the version arrow and choose the version to install. Click the page icon to the right of the version to see the description of the update.
- **Update**—To change a version of a component, click the version arrow of an installed component and choose a different version to install. Click the page icon to the right of the version to see the description of the update.

5. To install or update a component, click **Apply**.
6. Read the terms of the license agreement. accept them and click **Next**.

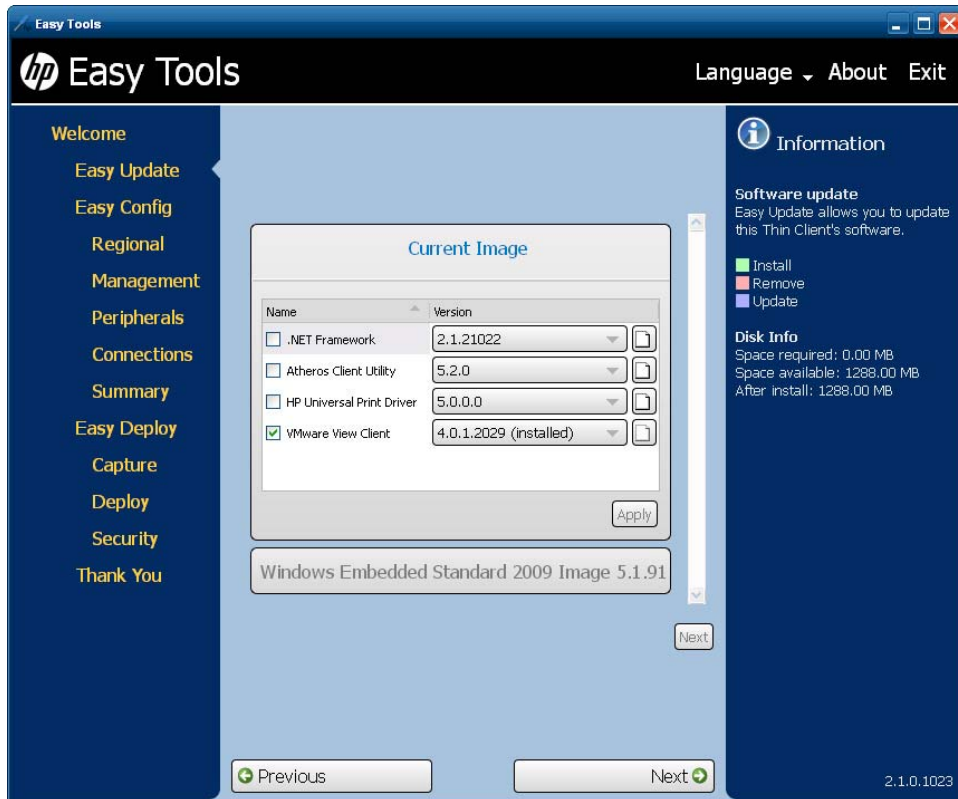
 **NOTE:** You must accept the terms of the license agreement in order to proceed.

7. If the changes listed are correct, click **Apply**.

When installation is complete, reboot the thin client at the prompt.


Uninstalling a component

1. Open **HP Easy Tools**.
2. Click **Easy Update** in the left pane to begin uninstalling a component.
3. Click **Current Image** to expand it.




Installed software has a check mark to the left of the name and the version is listed as **(installed)**.

4. Clear the check box of the component you want to uninstall.

 **NOTE:** You can select multiple install, update, and remove actions. If installation problems arise from having multiple selections, however, try selecting only one operation at a time.

5. Click **Next**.
6. Read the terms of the license agreement. accept them and click **Next**.

 **NOTE:** You must accept the terms of the license agreement in order to proceed.

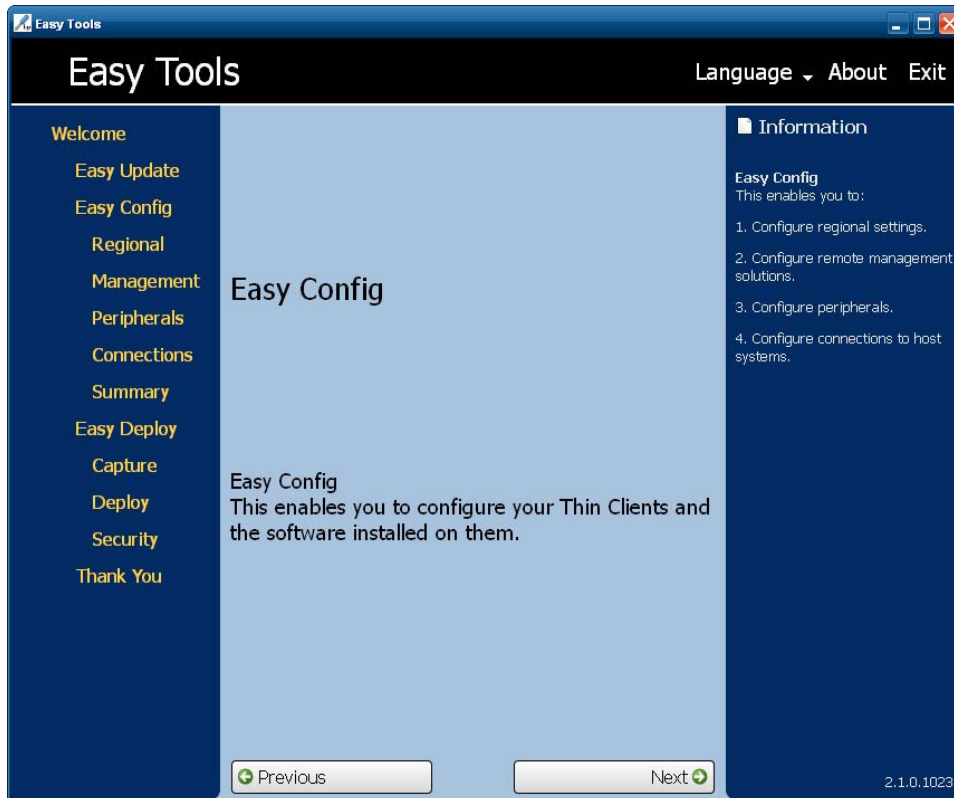
7. If the changes listed are correct, click **Apply**.

When installation is complete, reboot the thin client at the prompt.

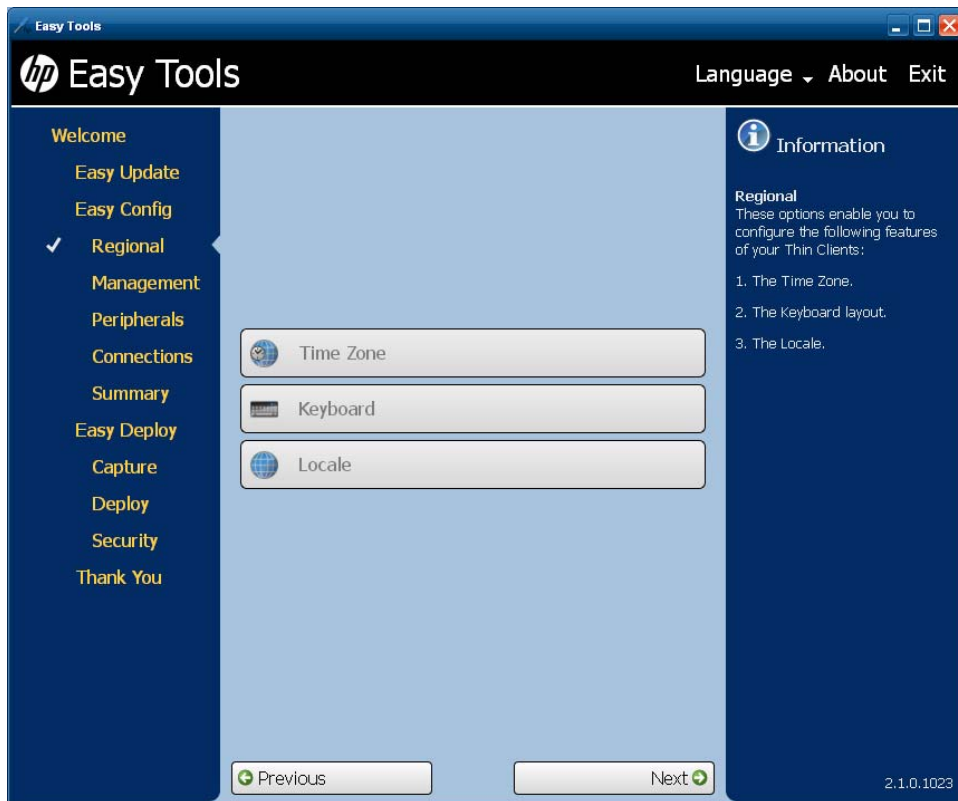
Easy Config

The Easy Config section allows you to configure a variety of features:

- Step [3](#) **Regional** options
 - Step [5](#) **Management** options
 - Step [7](#) **Peripherals**
 - Step [9](#) **Connections**
 - Step [12](#) **Summary**
1. Open **HP Easy Tools**.
 2. Click **Easy Config** in the left pane to begin configuring the thin client.



3. Click **Next** to advance to **Regional** options:




4. Configure the **Regional** options:

a. Time Zone

Select a geographical area and city or region in the desired time zone.

b. Keyboard

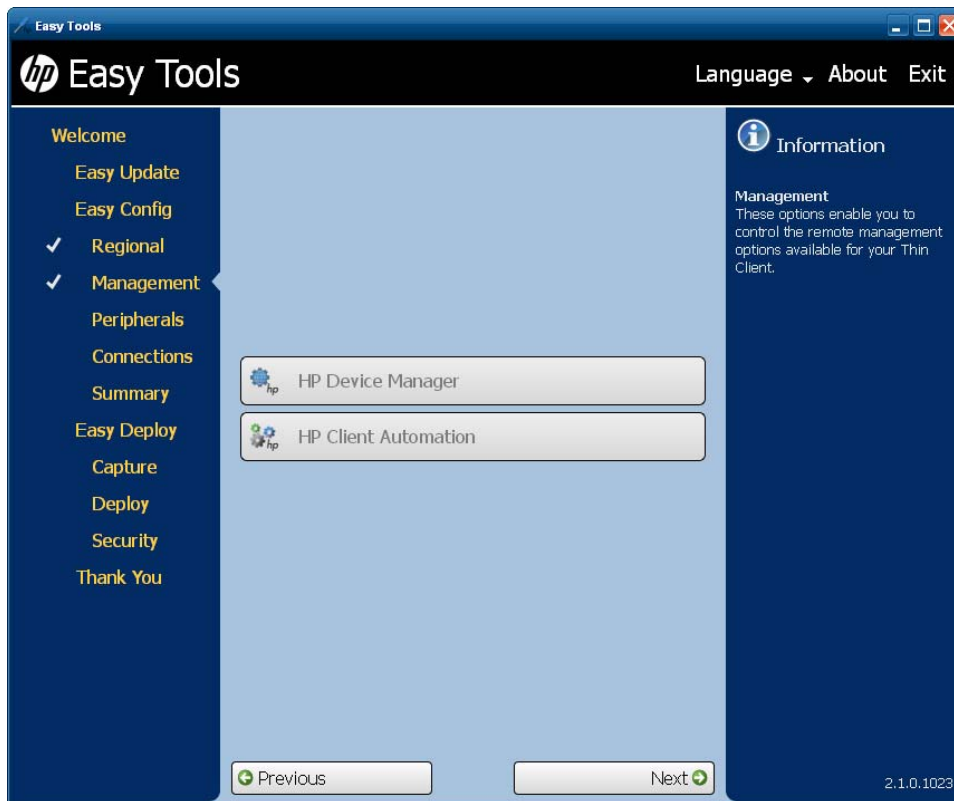
Select a keyboard layout.

 **NOTE:** The keyboard language does not have to match the keyboard you are using to complete the Easy Tools wizard.

c. Locale

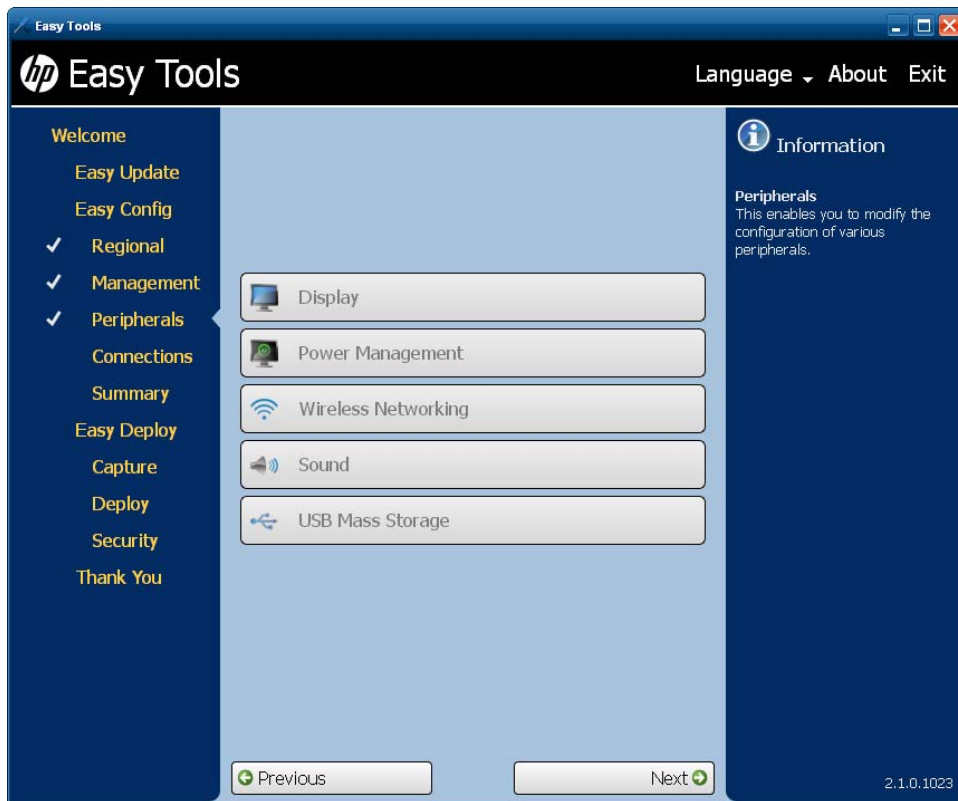
Select a language. Selecting a new locale (language) will change the format used for dates and currency to the locale selected.

5. Click **Next** to advance to **Management** options.



6. Enable one or more of the **Management** options or clear the check box to disable options.
- **HP Device Manager**
 - **HP Client Automation**

7. Click **Next** to advance to **Peripherals**.



8. Configure the **Peripherals**:

- a. **Display**

(Required) Set the following parameters:

- **Resolution**—Select the monitor resolution.
- **Color depth**—Select a specific color depth supported by the monitor and the software.
- **Refresh rate**—Select the refresh rate applicable to your display/monitor. LCD monitors typically support 60 Hz. CRT monitors display better at higher refresh rates, but that may shorten the life of the monitor and can cause noise.
- **Multi-monitor mode**—Select the screen arrangement for multiple monitors (for up to four monitors).
- **Primary monitor**—Select the primary monitor, if more than one monitor will be used.

- b. **Power Management**

Type or select the number of minutes in the **Screen saver on** field. After this specified period of inactivity, the screen saver is displayed.

c. Wireless Networking

- **SSID**—Type the Service set identifier (SSID) of the 802.11 wireless local area network (LAN) in the field.
- **Security**—Select the security option.
- **Passphrase**—If you selected a security option other than **None**, type a password in the field:
 - WEP 40-bit: 10 hexadecimal
 - WEP 104-bit: 26 hexadecimal
 - WPA Personal and WPA2 personal: 8 to 63 printable characters

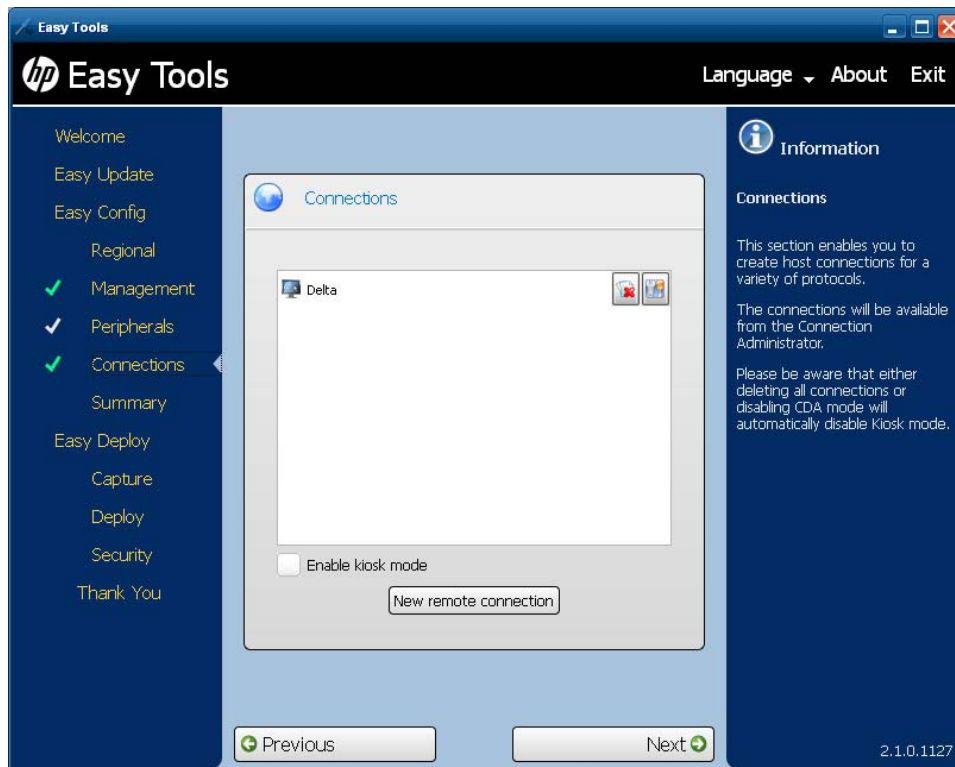
d. Sound

Select **Enable** to allow sound or clear the check box to keep it switched off.

e. USB Mass Storage

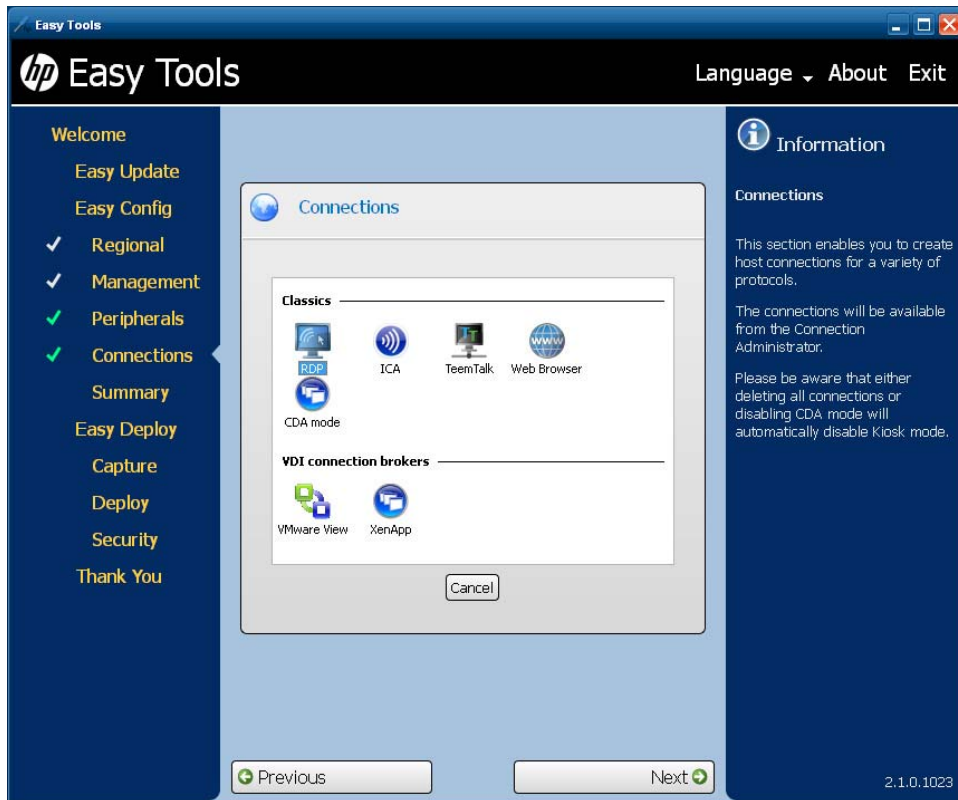
- Select **Enable** to enable USB ports, or leave the check box clear to keep USB ports disabled.
- Select **Read only storage** to prevent data from being copied to a USB mass storage device.

9. Click **Next** to advance to **Connections**.



NOTE: If you have not yet added a remote connection, this screen will show **No remote connection**. Proceed to step [11](#) to add a remote connection.

10. Select a connection to make changes to it:
 - Select **Enable kiosk mode** to limit the function of the connection.
 - Click the delete icon to the right of the connection name to delete the connection.
 - Click the edit icon to edit the connection.
11. To add a connection, click **New remote connection**.



Several types of connections may be added:



NOTE: You can have multiple connections. If you enable **Auto start connection**, the connection will start automatically when the thin client is started, and the thin client will stay connected while the thin client is on. The user's work flow may not require all of the connections to be connected all of the time, and it will improve the overall performance of the thin client if unused connections are not connected.

- **Classics**

- **RDP**

1. Type the connection name and the server hostname or IP address in the fields.
2. Select **Auto start connection**, if desired.
3. Click **Save** to save the configuration.

- **ICA**

1. Type the connection name and the server hostname or IP address in the fields.
2. Select **Auto start connection**, if desired.
3. Select **Enable HTTPS proxy**, if desired.
4. If you enable the HTTPS proxy, type the HTTPS proxy server hostname or IP address and port number in the fields.
5. Click **Save** to save the configuration.

- **TeemTalk**

1. Click **Use the Chinese Emulation suite**, if desired.
2. Type the connection name in the field.
3. Select the **Emulation** device.
4. Select and configure the data **Transport** protocol.
5. Select **Auto start connection**, if desired.
6. Click **Save** to save the configuration.

- **Web Browser**

1. Type the connection name and the URL in the fields.
2. Select **Auto start connection**, if desired.
3. Select **Enable proxy**, if desired.
4. If you enable the proxy, type the proxy server hostname or IP address and port number in the fields.
5. Click **Save** to save the configuration.

- **CDA mode**

1. Select **Enable CDA Mode**, if desired.
2. Type the server URL in the field.
3. Click **Save** to save the configuration.

- **VDI connection brokers**

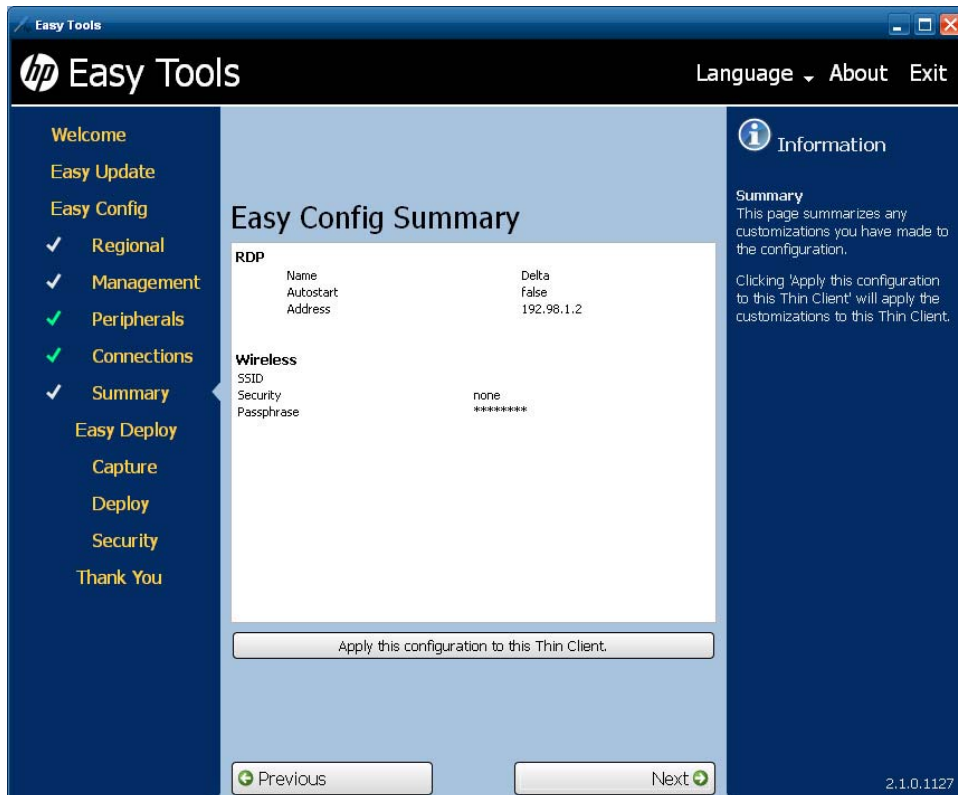
- **VMware View**

1. Type the connection name and the URL in the fields.
2. Select **Auto start connection**, if desired.
3. Click **Save** to save the configuration.

- **XenApp**

1. Type the connection name and the URL in the fields.
2. Select **Auto start connection**, if desired.
3. Click **Save** to save the configuration.

12. Click **Next** to advance to the **Summary**.



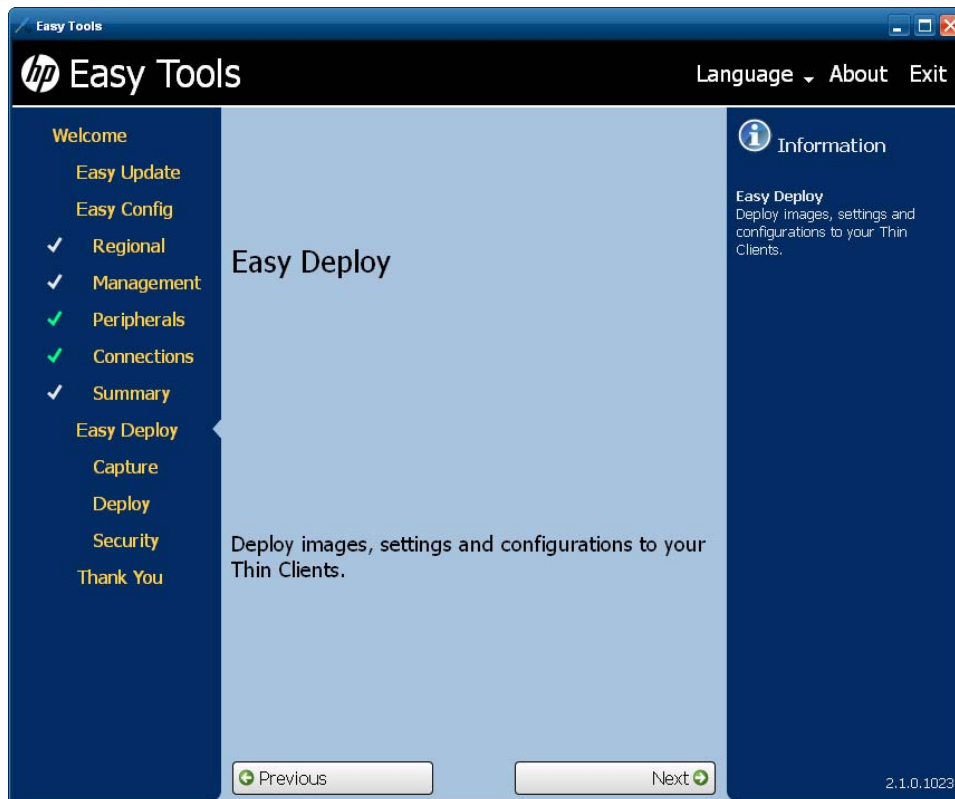
13. Review the **Easy Config Summary**. If it is correct, click **Apply this configuration to this Thin Client**.

Easy Deploy


The Easy Deploy section allows you to carry out the following functions:

- [Capturing an image on page 39](#)
- [Deploying an image on page 41](#)
- [Setting security on page 44](#)

1. Open **HP Easy Tools**.
2. Click **Easy Deploy** in the left pane to go to the **Easy Deploy** section.



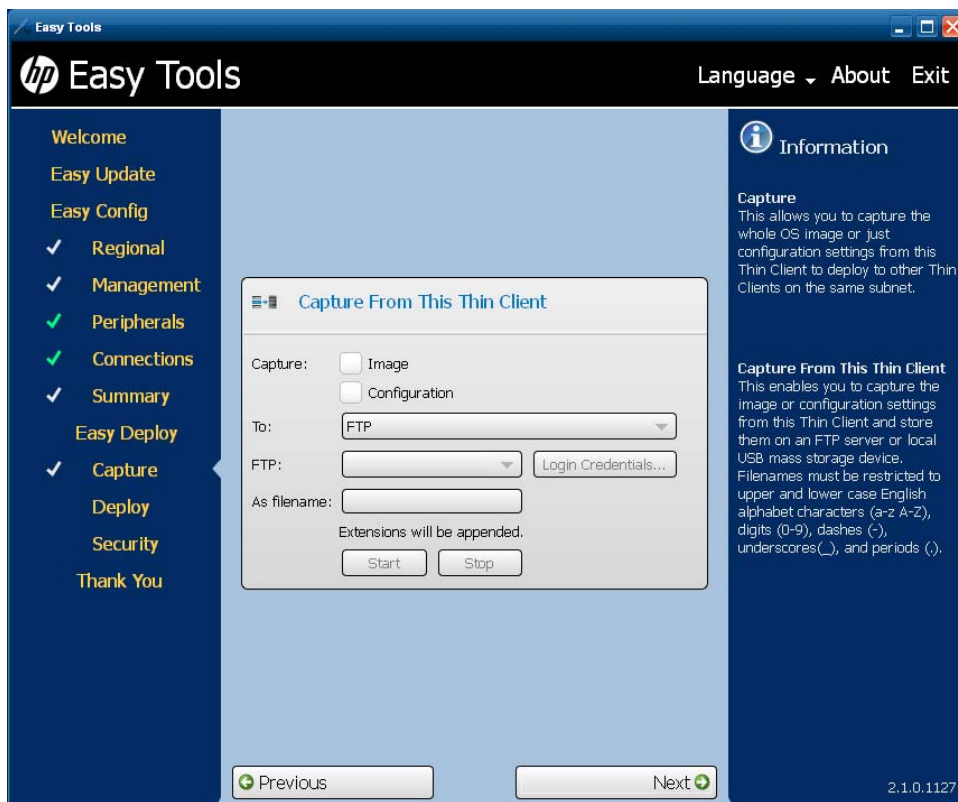
Capturing an image

 **NOTE:** You may need a USB mass storage device for this procedure. The USB device capacity must be larger than the thin client flash in order to capture the entire flash contents. Images larger than 4 GB cannot be captured to a USB device.

Use this procedure to capture one of the following:

- **Image**—The operating system plus configuration
- **Configuration**—The basic configuration settings you can set in Easy Config:
 - **Regional**
 - **Management**
 - **Peripherals**
 - **Connections**

1. Open **HP Easy Tools**.
2. In the left pane, click **Capture** under **Easy Deploy** to begin capturing an image.



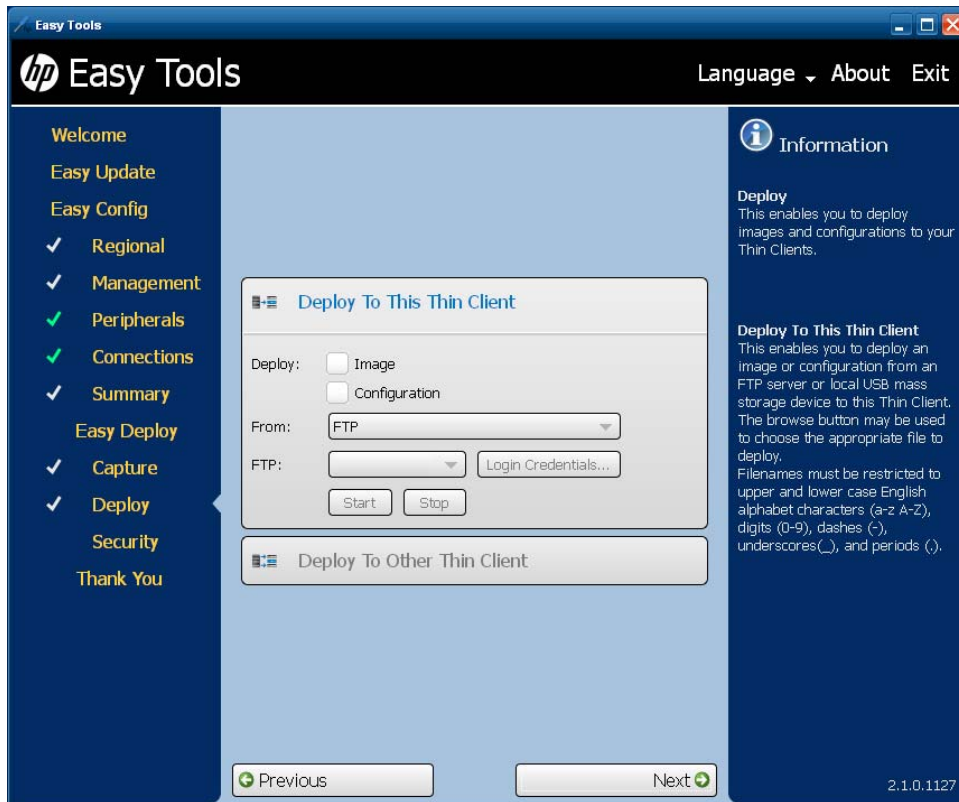
3. Click **Capture From This Thin Client** and select what you want to capture:
 - **Image**
 - **Configuration**
4. Select the destination for the captured information:
 - **FTP**
 - **USB**

5. Type the FTP address and Login Credentials or the USB mass storage device identity in the appropriate fields.
6. Type a name in the **As filename** field
Filenames must be restricted to upper and lower case English alphabet characters (a-z A-Z), digits (0-9), dashes (-), underscores (_), and periods (.).
7. Click **Start**.

Deploying an image

Use this procedure to deploy one of the following:

- **Image**—The operating system plus configuration
 - **Configuration**—The basic configuration settings you can set in Easy Config:
 - **Regional**
 - **Management**
 - **Peripherals**
 - **Connections**
1. Open **HP Easy Tools**.
 2. In the left pane, click **Deploy** under **Easy Deploy** to begin deploying an image.
 3. Select the deployment task:
 - **Deploy To This Thin Client**
 - **Deploy To Other Thin Client**
 4. To **Deploy To This Thin Client**:



a. Select what you want to deploy:

- **Image**
- **Configuration**

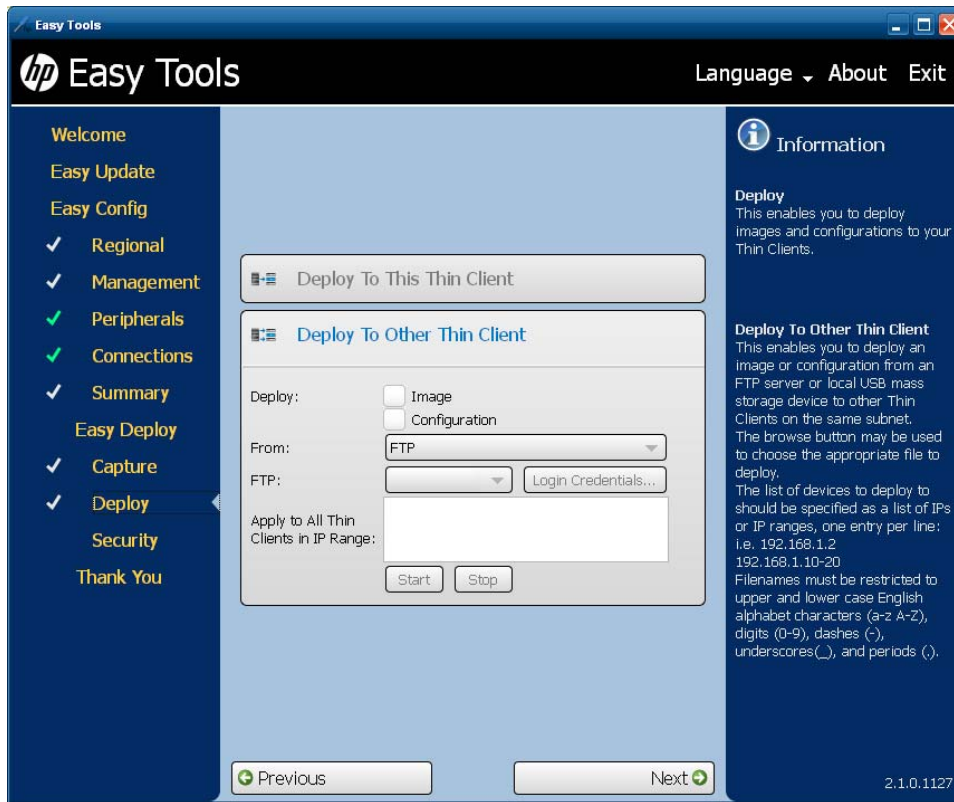
b. Select the location of the information:

- **FTP**
- **USB**

Filenames must be restricted to upper and lower case English alphabet characters (a-z A-Z), digits (0–9), dashes (-), underscores (_), and periods (.).

c. Type the FTP address and Login Credentials or the USB mass storage device identity in the appropriate fields and click **Start** to begin deployment.

5. To Deploy To Other Thin Client:



a. Select what you want to deploy:

- **Image**
- **Configuration**

b. Select the location of the information:

- **FTP**
- **USB**

c. Type the FTP address and Login Credentials or the USB mass storage device identity in the appropriate fields.

d. Identify the thin clients to which the image, settings, or configuration is to be deployed.

This enables you to deploy an image or configuration from an FTP server or local USB mass storage device to other thin clients on the same subnet.

The browse button may be used to choose the appropriate file to deploy. The list of devices to deploy to should be specified as a list of IPs or IP ranges, one entry per line; for example:

- 192.168.1.2
- 192.168.1.10-20

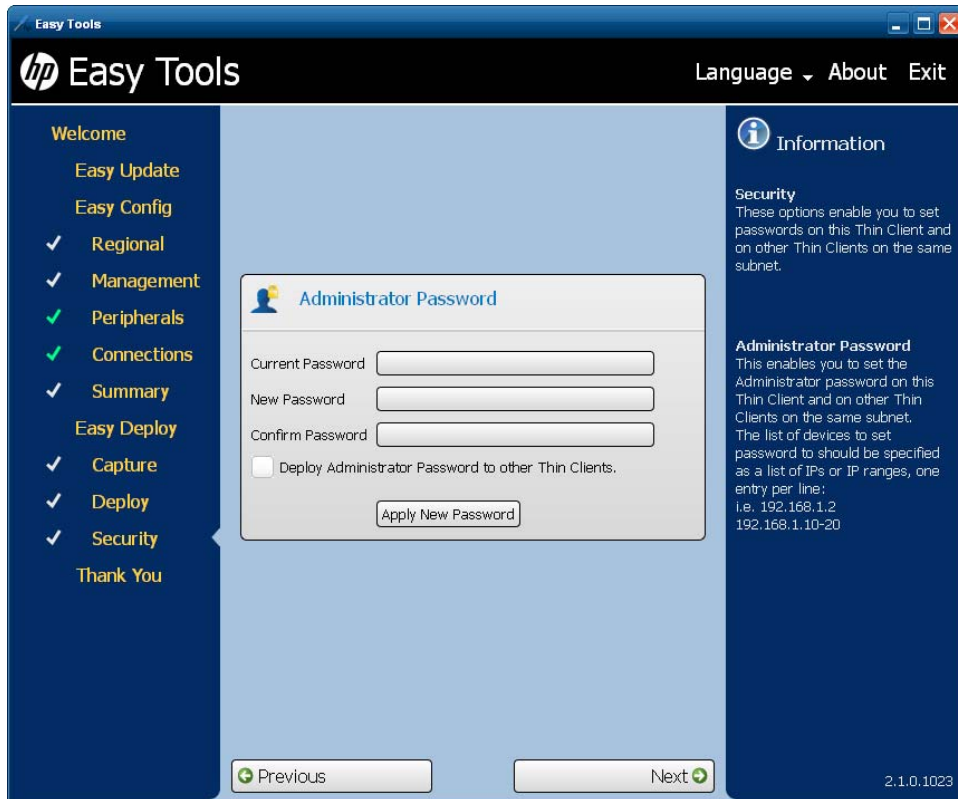
Filenames must be restricted to upper and lower case English alphabet characters (a-z A-Z), digits (0–9), dashes (-), underscores (_), and periods (.).

e. Click **Start** to begin deployment.

Setting security

This enables you to set passwords on this thin client and on other thin clients on the same subnet.

1. Open **HP Easy Tools**.
2. In the left pane, click **Security** under **Easy Deploy** to set an administrator password.




3. Type the current password in the field.
4. Type the new password in the **New Password** and **Confirm Password** fields.

The list of devices to set passwords to should be specified as a list of IPs or IP ranges, one entry per line; for example:

- 192.168.1.2
- 192.168.1.10-20

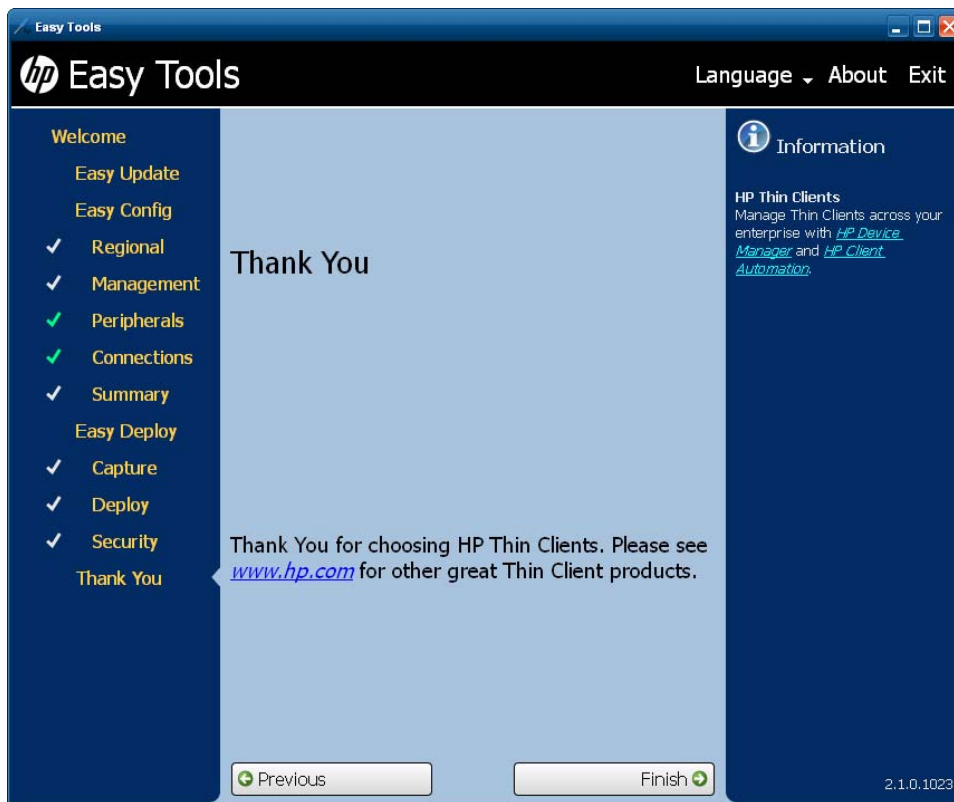
5. If desired, select **Deploy Administrator Password to other Thin Clients**.

 **NOTE:** You can only deploy the administrator password to thin clients that have the same current password.

6. Click **Apply New Password**.

Thank You

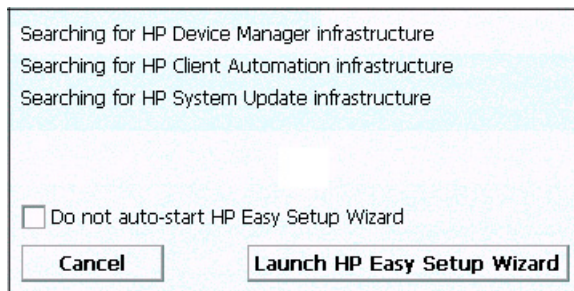
1. Click **Thank You** in the left pane to advance to the **Thank You** section.



2. Click **Finish** to close the HP Easy Tools wizard.
3. Reboot the thin client.
4. Check the thin client to be sure it operates as expected before copying this configuration to other thin clients.

4 HP Easy Tools for Microsoft® Windows® CE

HP Easy Tools does not open if HP Client Automation (HPCA), HP Device Manager (HPDM), or HP System Update services are running. To prevent HP Easy Tools from autolaunching, select **Do not auto-start HP Easy Setup Wizard** when the following screen appears while the application is booting.



The HP Easy Tools window has three main parts:

- **Left Pane**

All configuration settings categories are listed in the left pane. The HP Easy Tools wizard leads you through each category, but if you want to jump forward or backward, just click the category in the left pane. Sections that have been viewed are marked by a gray check mark. Sections that have been modified are marked by a green check mark.

- **Center Pane**

When you advance to or select a category in the left pane, the configuration options appear in the center pane. Click on one to open the configuration work area.


- **Right Pane**

As you select a category and a specific setting, descriptions of the category and the specific setting appear in the right pane.

HP Easy Tools for Windows CE has four sections:

- [Easy Update on page 48](#)—This section enables you to install and maintain official HP images and softpaqs.
- [Easy Config on page 52](#)—Configure thin clients and software in this section.

- [Easy Deploy on page 60](#)—Use this section to capture and deploy images, settings, and configurations and set administrative passwords.
- [Thank You on page 66](#)

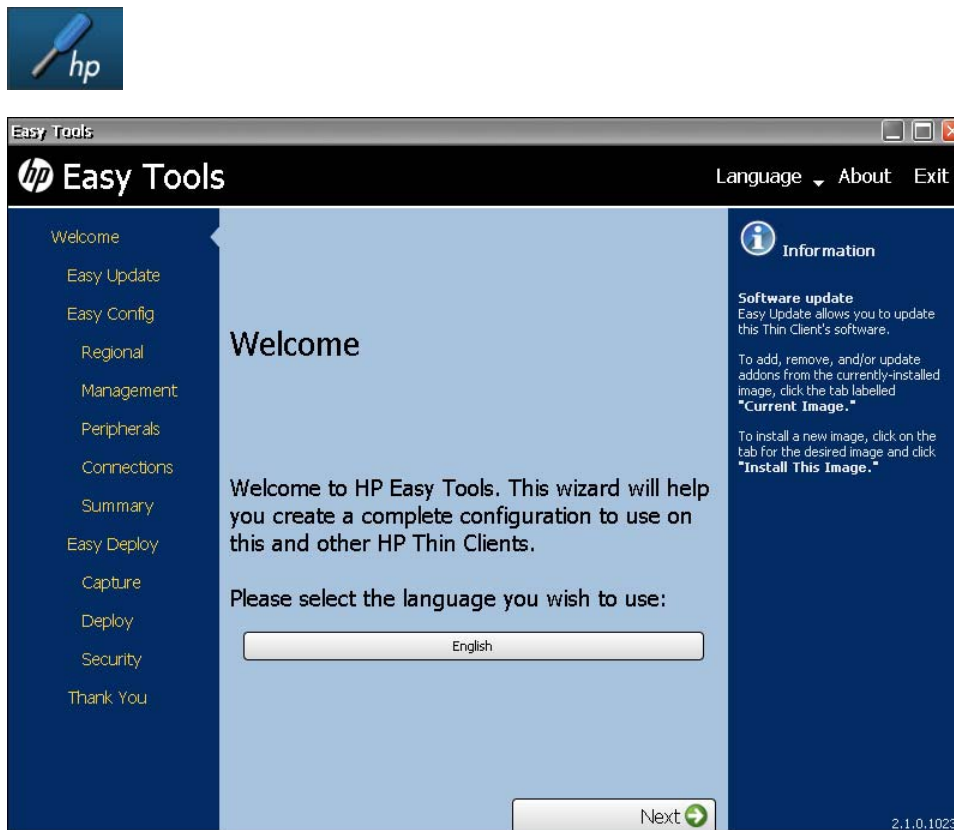
 **NOTE:** If either HPCA or HPDM is active on the network, changes in settings made through HPCA or HPDM override local changes made using HP Easy Tools.


If a Write Filter is enabled on the thin client, you will not be able to apply a new configuration until you disable the Write Filter.

You must be logged on as administrator to use HP Easy Tools, which is automatic with the default configuration of Windows CE. If changes have been made to the auto-login settings, however, you must log on as administrator. The default Administrator password is blank.

To access HP Easy Tools:

- ▲ Click **Start > Control Panel**, and click the **Easy Tools** wizard icon.



 **NOTE:** You may click **Language** in the black bar across the top of the HP Easy Tools screen and change the language at any time during your session.


If the system language is English, then the only choice is English. If the system language is not English, then you may choose the system language or English.

Easy Update

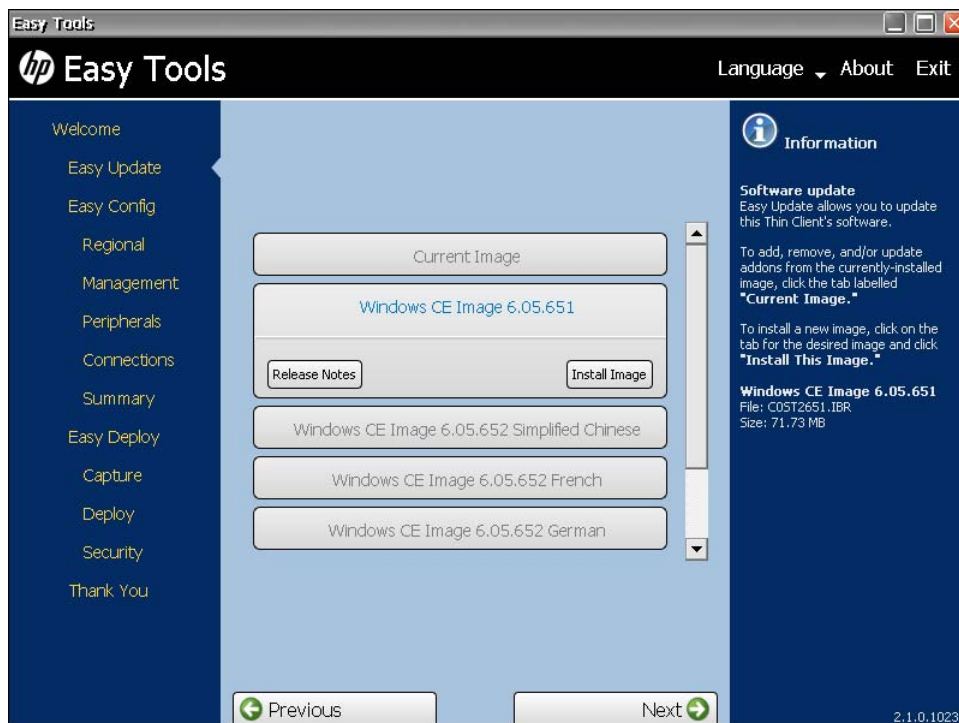
Easy Update allows you to perform the following tasks:

- [Updating an image on page 48](#)
- [Installing or upgrading a component on page 49](#)
- [Uninstalling a component on page 50](#)

Updating an image

 **NOTE:** Internet connectivity is required to download images or AddOns.


1. Open **HP Easy Tools**.
2. Click **Easy Update** in the left pane to begin updating the thin client.



3. Click on the Windows CE Image version that you would like to install.

 **NOTE:** Not all versions of Windows CE have Easy Tools to update the image.

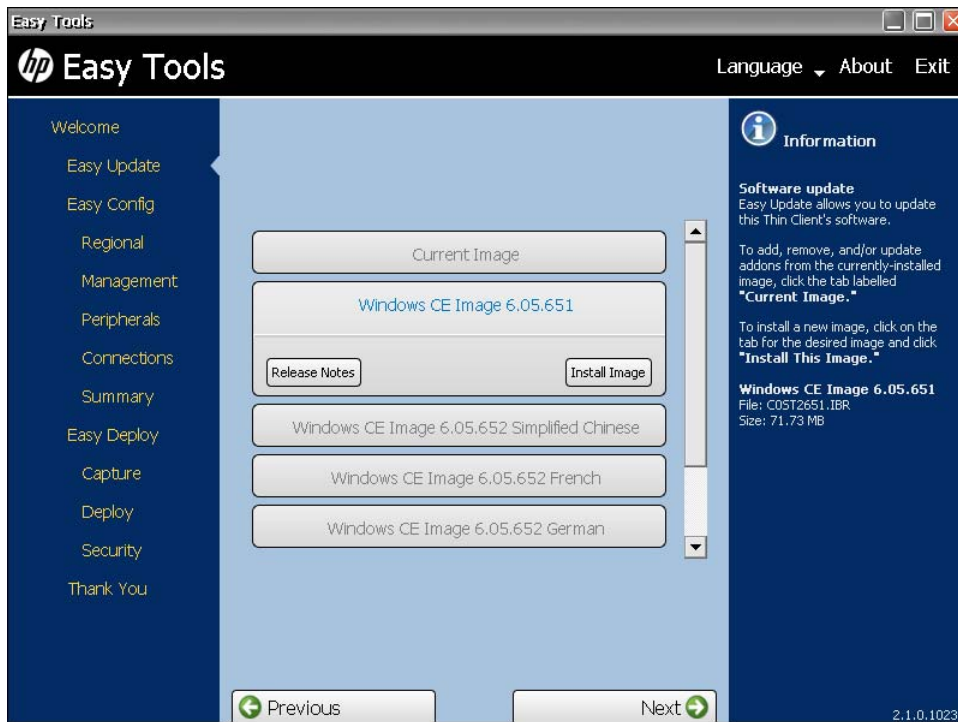
4. Click **Install Image** to install the image.
5. Read the terms of the license agreement. Accept them and click **Next**.

 **NOTE:** You must accept the terms of the license agreement in order to proceed.

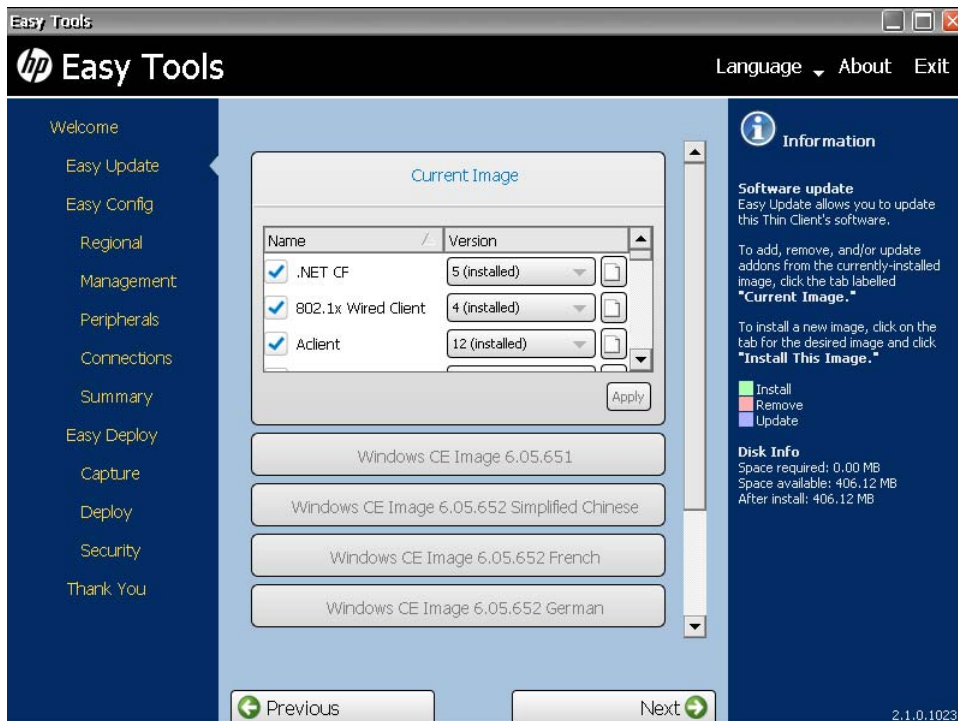
6. Click **Install This Image** on the Warning screen.
7. A progress bar shows the state of the installation. The unit automatically reboots when the installation is complete.

Installing or upgrading a component

1. Open **HP Easy Tools**.
2. Click **Easy Update** in the left pane to begin installing or upgrading a component.




3. Click **Current Image** to expand it.



Installed software has a check mark to the left of the name and the version is listed as **(installed)**.


4. Select the actions to be taken.

 **NOTE:** You can select multiple install, update, and remove actions. If installation problems arise from having multiple selections, however, try selecting only one operation at a time.

- **Install**—Select updates to install. Click the version arrow and choose the version to install. Click the page icon to the right of the version to see the description of the update.
- **Update**—To change a version of a component, click the version arrow of an installed component and choose a different version to install. Click the page icon to the right of the version to see the description of the update.

5. To install or update a component, click **Apply**.

6. Read the terms of the license agreement. accept them and click **Next**.

 **NOTE:** You must accept the terms of the license agreement in order to proceed.

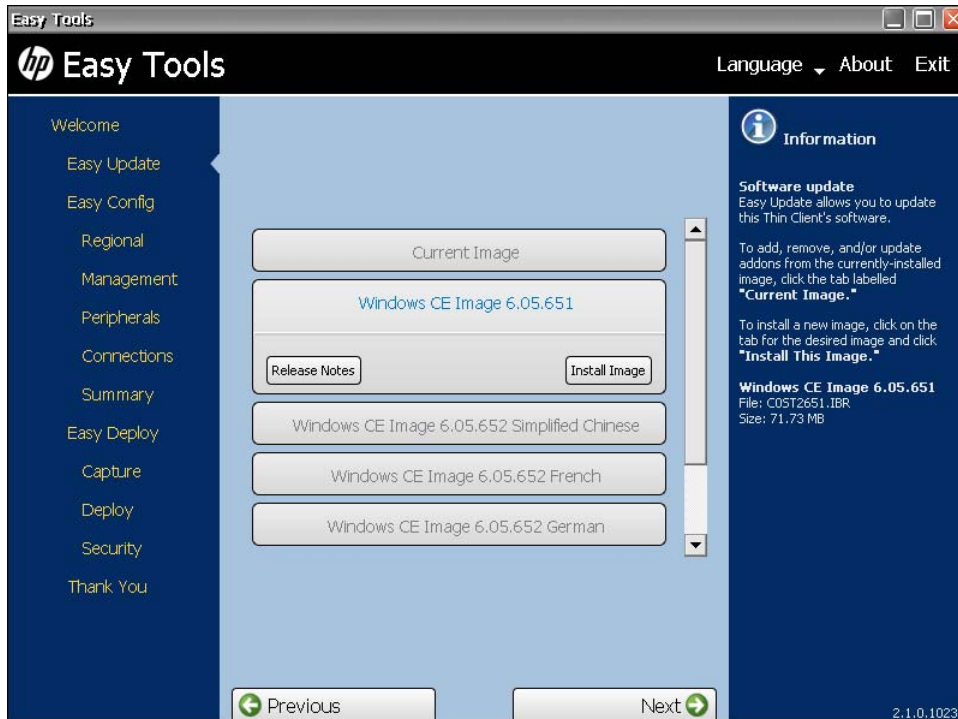
7. If the changes listed are correct, click **Apply**.

When the progress bar is at 100% and the status says **Done**, you can continue on with the HP Easy Tools wizard. Most add-ons installations or updates do not require a reboot in Windows CE.

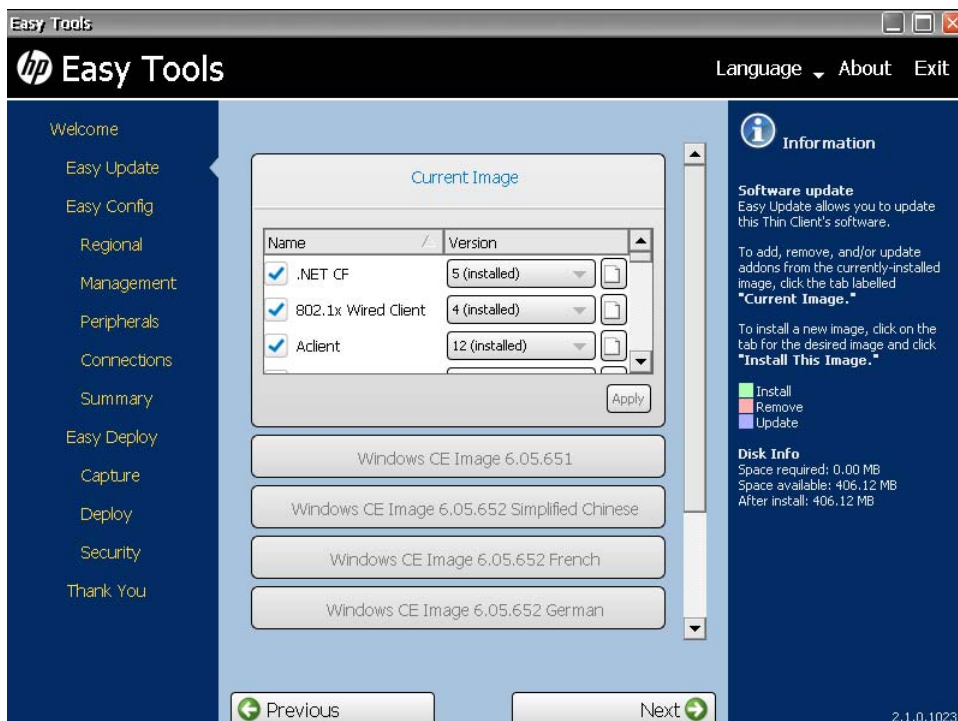
Uninstalling a component

1. Open **HP Easy Tools**.

2. Click **Easy Update** in the left pane to begin uninstalling a component.




3. Click **Current Image** to expand it.




Installed software has a check mark to the left of the name and the version is listed as **(installed)**.

4. Clear the check box of the component you want to uninstall.

 **NOTE:** You can select multiple install, update, and remove actions. If installation problems arise from having multiple selections, however, try selecting only one operation at a time.

5. Click **Next**.

6. Read the terms of the license agreement. accept them and click **Next**.

 **NOTE:** You must accept the terms of the license agreement in order to proceed.

7. If the changes listed are correct, click **Apply**.

When the progress bar is at 100% and the status says **Done**, you can continue with the HP Easy Tools wizard. Most add-ons installations or updates do not require a reboot in Windows CE.

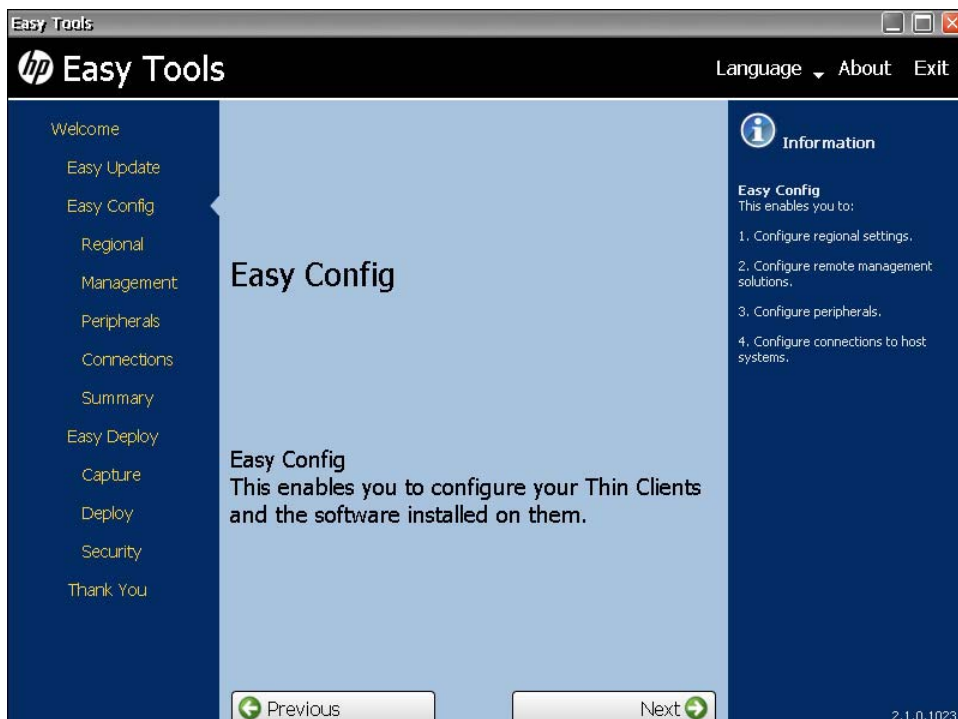
Easy Config

The Easy Config section allows you to configure a variety of features:

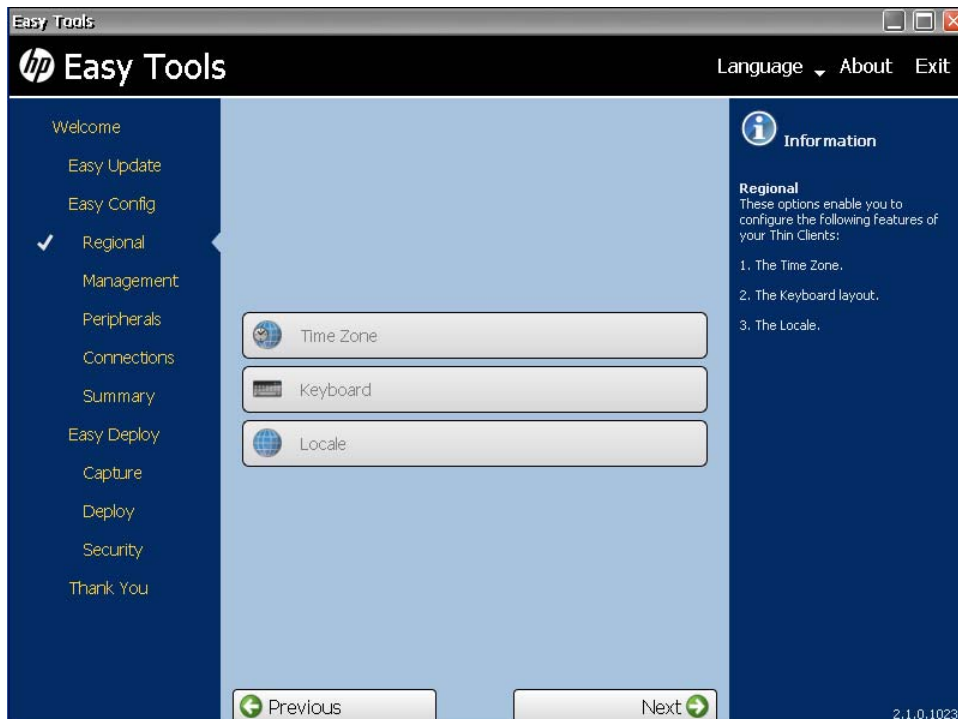
- Step [3](#) **Regional** options
- Step [5](#) **Management** options
- Step [7](#) **Peripherals**
- Step [9](#) **Connections**
- Step [12](#) **Summary**

1. Open **HP Easy Tools**.

2. Click **Easy Config** in the left pane to begin configuring the thin client.



3. Click **Next** to advance to **Regional** options:



4. Configure the **Regional** options:

a. Time Zone

Select a geographical area and city or region in the desired time zone.

b. Keyboard

Select a keyboard layout.

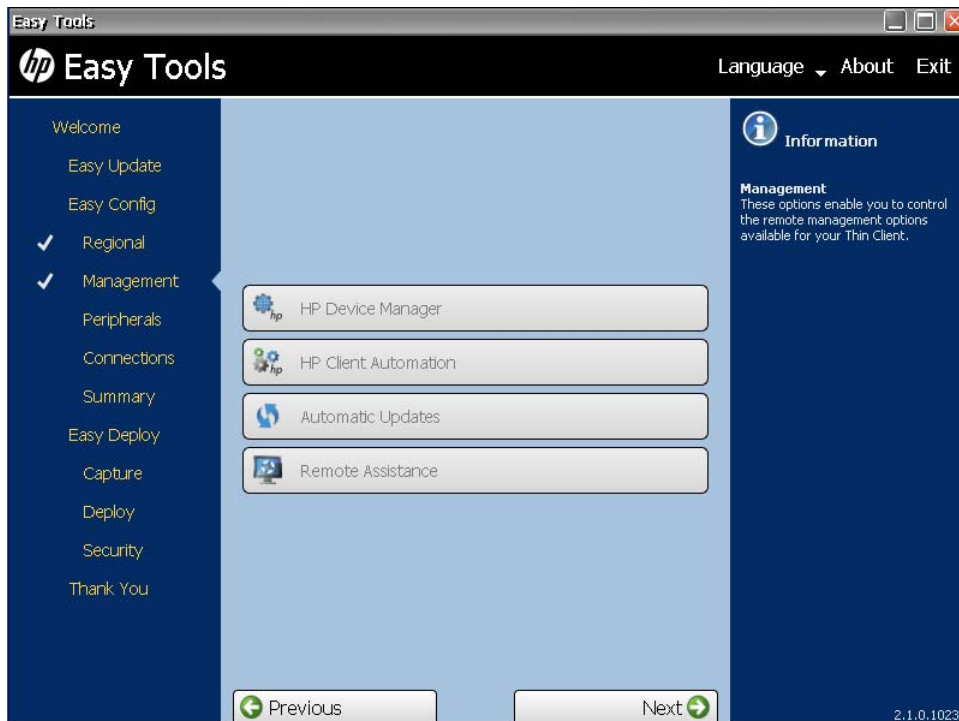


NOTE: The keyboard language does not have to match the keyboard you are using to complete the Easy Tools wizard.

c. Locale

Select a language. Selecting a new locale (language) will change the format used for dates and currency to the locale selected.

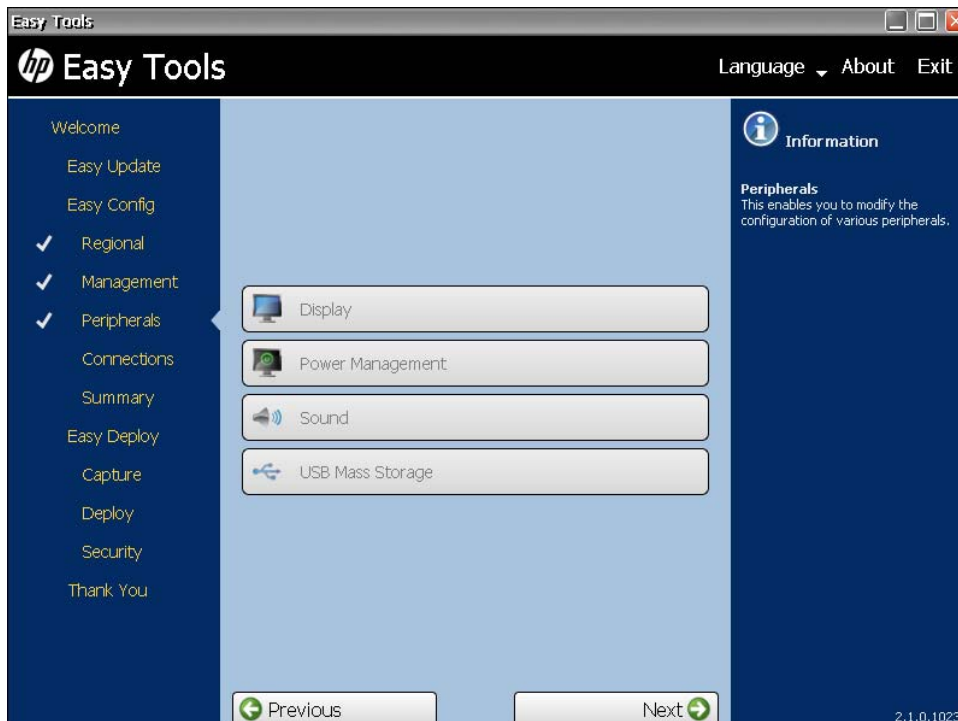
5. Click **Next** to advance to **Management** options.



6. Enable one or more of the **Management** options or clear the check box to disable options.

- **HP Device Manager**
- **HP Client Automation**
- **Automatic Updates**
- **Remote Assistance**

7. Click **Next** to advance to **Peripherals**.



8. Configure the **Peripherals**:

a. Display

(Required) Set the following parameters:

- **Resolution**—Select the monitor resolution.
- **Color depth**—Select a specific color depth supported by the monitor and the software.
- **Refresh rate**—Select the refresh rate applicable to your display/monitor. LCD monitors typically support 60 Hz. CRT monitors display better at higher refresh rates, but that may shorten the life of the monitor and can cause noise.
- **Multi-monitor mode**—Select the screen arrangement for multiple monitors (for up to four monitors).

b. Power Management

Type or select the number of minutes in the **Screen saver on** field. After this specified period of inactivity, the screen saver is displayed.

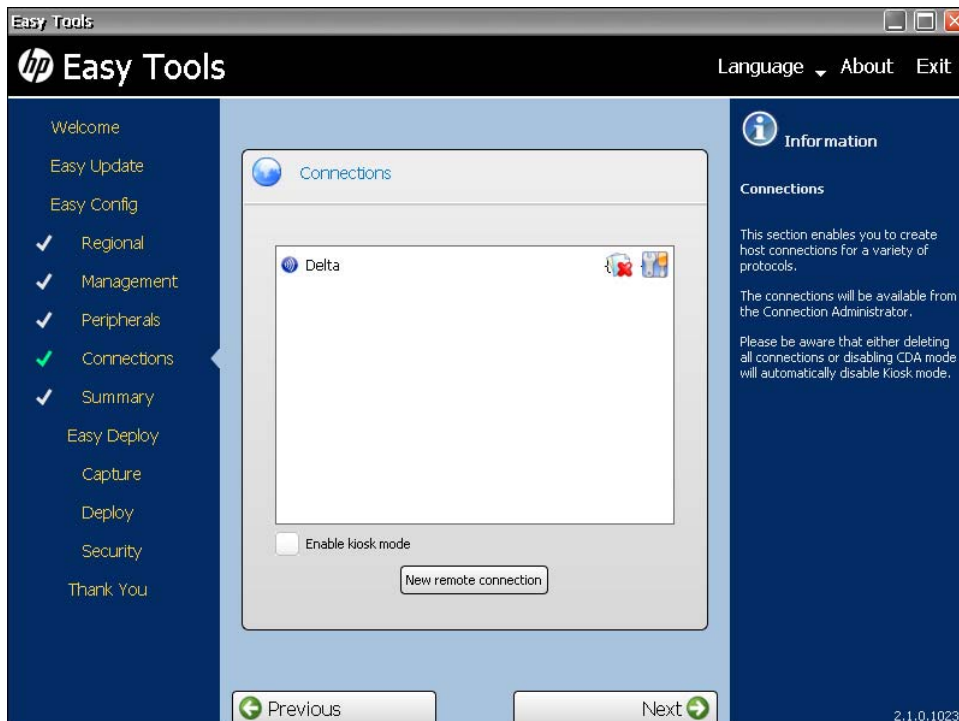
c. Sound


Select **Enable** to allow sound or clear the check box to keep it switched off.

d. USB Mass Storage

Select **Enable** to enable USB ports, or leave the check box clear to keep USB ports disabled.

9. Click **Next** to advance to **Connections**.



 **NOTE:** If you have not yet added a remote connection, this screen will show **No remote connection**. Proceed to step [11](#) to add a remote connection.

10. Select a connection to make changes to it:
 - Select **Enable kiosk mode** to limit the function of the connection.
 - Click the delete icon to the right of the connection name to delete the connection.
 - Click the edit icon to edit the connection.
11. To add a connection, click **New remote connection**.



Several types of connections may be added:

NOTE: You can have multiple connections. If you enable **Auto start connection**, the connection will start automatically when the thin client is started, and the thin client will stay connected while the thin client is on. The user's work flow may not require all of the connections to be connected all of the time, and it will improve the overall performance of the thin client if unused connections are not connected.

- **Classics**

- **RDP**

1. Type the connection name and the server hostname or IP address in the fields.
2. Select **Auto start connection**, if desired.
3. Click **Save** to save the configuration.

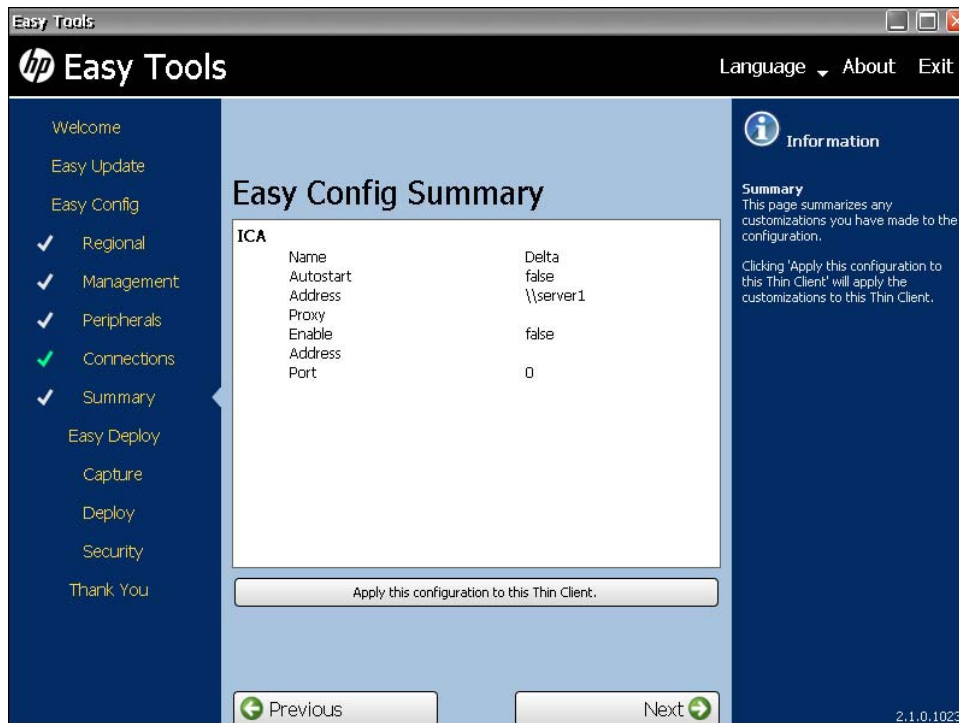
- **ICA**

1. Type the connection name and the server hostname or IP address in the fields.
2. Select **Auto start connection**, if desired.
3. Select **Enable HTTPS proxy**, if desired.
4. If you enable the HTTPS proxy, type the HTTPS proxy server hostname or IP address and port number in the fields.
5. Click **Save** to save the configuration.

- **TeemTalk**

1. Type the connection name in the field.
 2. Select the **Emulation** device.
 3. Select and configure the data **Transport** protocol.
 4. Select **Auto start connection**, if desired.
 5. Click **Save** to save the configuration.
- **Web Browser**
 1. Type the connection name and the URL in the fields.
 2. Select **Auto start connection**, if desired.
 3. Select **Enable proxy**, if desired.
 4. If you enable the proxy, type the proxy server hostname or IP address and port number in the fields.
 5. Click **Save** to save the configuration.
 - **CDA mode**
 1. Select **Enable CDA Mode**, if desired.
 2. Type the URL in the field.
 3. Click **Save** to save the configuration.
 - **VDI connection brokers**
 - **VMware View**
 1. Type the connection name and the URL in the fields.
 2. Select **Auto start connection**, if desired.
 3. Click **Save** to save the configuration.
 - **XenApp**
 1. Type the connection name and the URL in the fields.
 2. Select **Auto start connection**, if desired.
 3. Click **Save** to save the configuration.

12. Click **Next** to advance to the **Summary**.

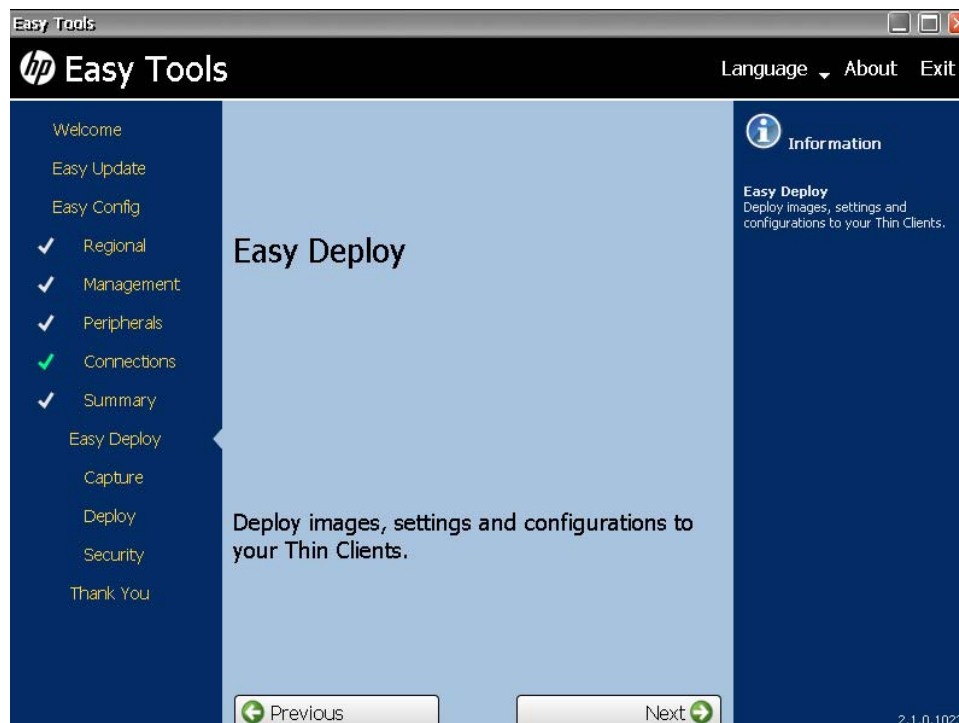


13. Review the **Easy Config Summary**. If it is correct, click **Apply this configuration to this Thin Client**.


Easy Deploy

The Easy Deploy section allows you to carry out the following functions:

- [Capturing an image on page 60](#)
 - [Deploying an image on page 62](#)
 - [Setting security on page 65](#)
1. Open **HP Easy Tools**.
 2. Click **Easy Deploy** in the left pane to go to the **Easy Deploy** section.



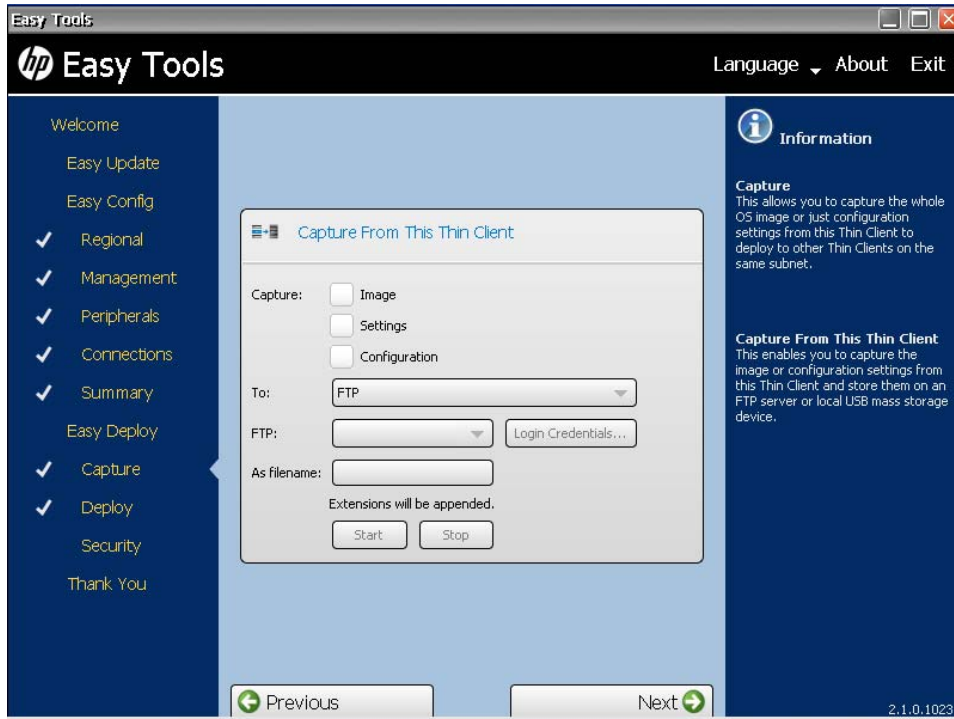
Capturing an image

 **NOTE:** You may need a USB mass storage device for this procedure. The USB device capacity must be larger than the thin client flash in order to capture the entire flash contents. Images larger than 4 GB cannot be captured to a USB device.

Use this procedure to capture one of the following:

- **Image**—The operating system plus all settings and configuration
- **Settings**—The basic configuration settings plus additional advanced settings
- **Configuration**—The basic configuration settings you can set in Easy Config:
 - **Regional**
 - **Management**

- **Peripherals**
 - **Connections**
1. Open **HP Easy Tools**.
 2. In the left pane, click **Capture** under **Easy Deploy** to begin capturing an image.



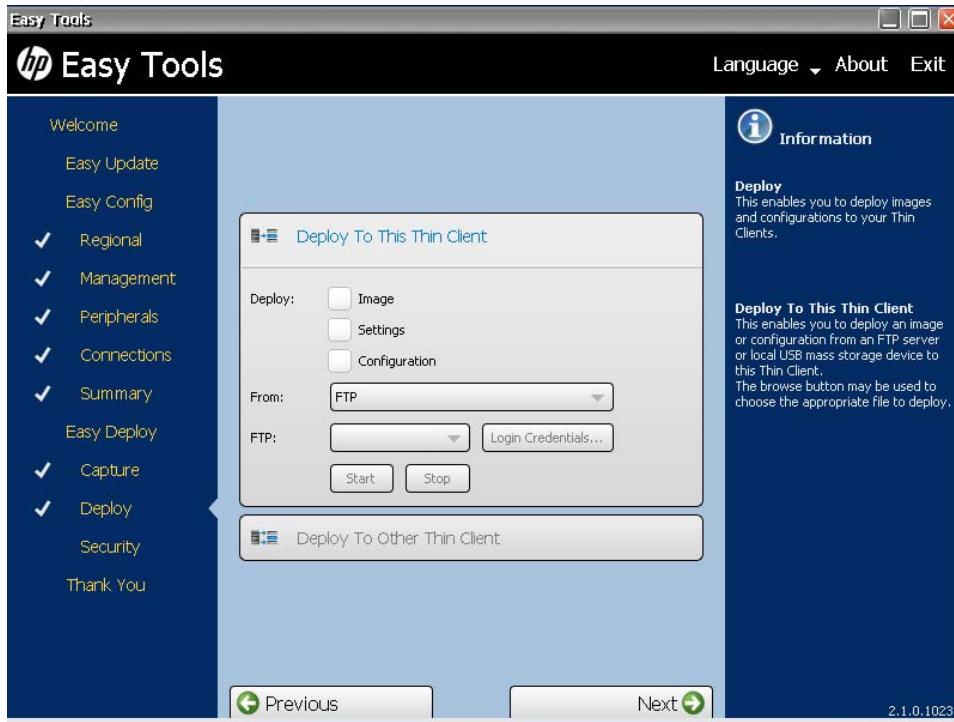
3. Click **Capture From This Thin Client** and select what you want to capture:
 - **Image**
 - **Settings**
 - **Configuration**
4. Select the destination for the captured information:
 - **FTP**
 - **USB**
5. Type the FTP address and Login Credentials or the USB mass storage device identity in the appropriate fields.
6. Type a name in the **As filename** field

Filenames must be restricted to upper and lower case English alphabet characters (a-z A-Z), digits (0-9), dashes (-), underscores (_), and periods (.).
7. Click **Start**.

Deploying an image

Use this procedure to deploy one of the following:

- **Image**—The operating system plus all settings and configuration
 - **Settings**—The basic configuration settings plus additional advanced settings
 - **Configuration**—The basic configuration settings you can set in Easy Config:
 - **Regional**
 - **Management**
 - **Peripherals**
 - **Connections**
1. Open **HP Easy Tools**.
 2. In the left pane, click **Deploy** under **Easy Deploy** to begin deploying an image.
 3. Select the deployment task:
 - **Deploy To This Thin Client**
 - **Deploy To Other Thin Client**
 4. To **Deploy To This Thin Client**:



a. Select what you want to deploy:

- **Image**
- **Settings**
- **Configuration**

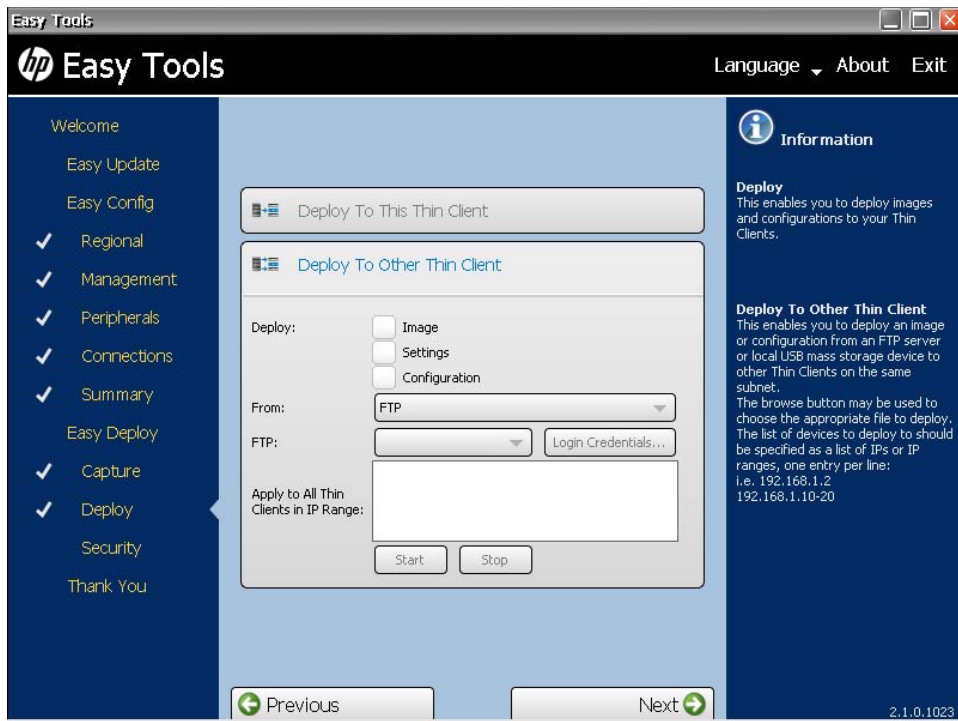
b. Select the location of the information:

- **FTP**
- **USB**

Filenames must be restricted to upper and lower case English alphabet characters (a-z A-Z), digits (0–9), dashes (-), underscores (_), and periods (.).

c. Type the FTP address and Login Credentials or the USB mass storage device identity in the appropriate fields and click **Start** to begin deployment.

5. To **Deploy To Other Thin Client**:



a. Select what you want to deploy:

- **Image**
- **Settings**
- **Configuration**

b. Select the location of the information:

- **FTP**
- **USB**

c. Type the FTP address and Login Credentials or the USB mass storage device identity in the appropriate fields.

d. Identify the thin clients to which the image, settings, or configuration is to be deployed.

This enables you to deploy an image or configuration from an FTP server or local USB mass storage device to other thin clients on the same subnet.

The browse button may be used to choose the appropriate file to deploy. The list of devices to deploy to should be specified as a list of IPs or IP ranges, one entry per line; for example:

- 192.168.1.2
- 192.168.1.10-20

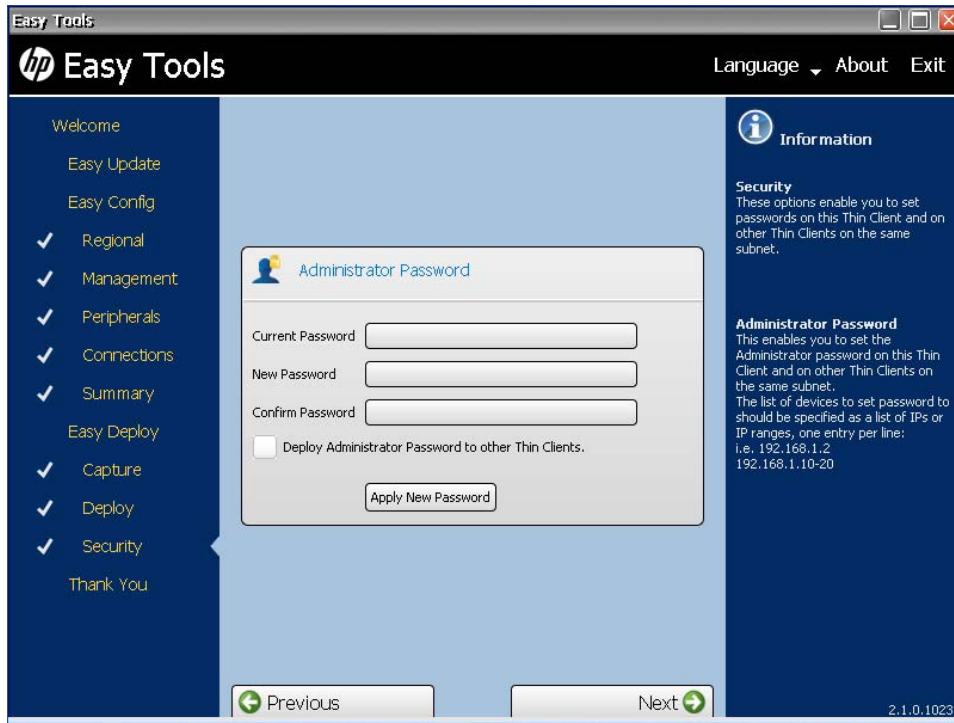
Filenames must be restricted to upper and lower case English alphabet characters (a-z A-Z), digits (0-9), dashes (-), underscores (_), and periods (.).

e. Click **Start** to begin deployment.

Setting security

This enables you to set passwords on this thin client and on other thin clients on the same subnet.


1. Open **HP Easy Tools**.
2. In the left pane, click **Security** under **Easy Deploy** to set an administrator password.



3. Type the current password in the field.
4. Type the new password in the **New Password** and **Confirm Password** fields.

The list of devices to set passwords to should be specified as a list of IPs or IP ranges, one entry per line; for example:

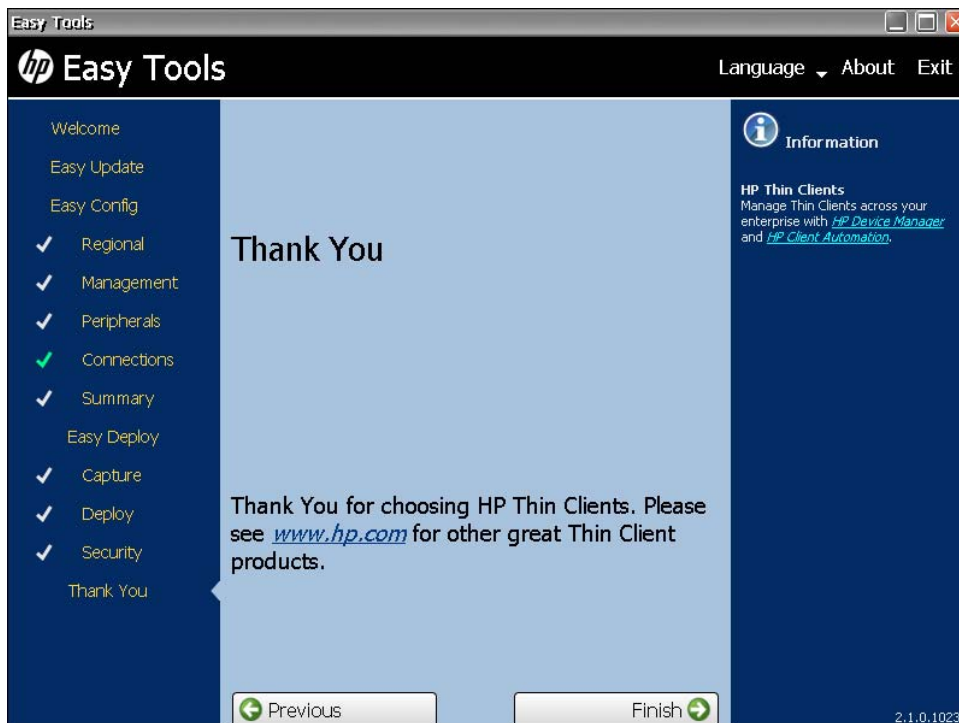
- 192.168.1.2
 - 192.168.1.10-20
5. If desired, select **Deploy Administrator Password to other Thin Clients**.

 **NOTE:** You can only deploy the administrator password to thin clients that have the same current password.

6. Click **Apply New Password**.

Thank You

1. Click **Thank You** in the left pane to advance to the **Thank You** section.



2. Click **Finish** to close the HP Easy Tools wizard.
3. Reboot the thin client.
4. Check the thin client to be sure it operates as expected before copying this configuration to other thin clients.

5 HP Easy Tools for PC

HP Easy Tools for PCs leverages the same wizard-driven toolset provided within HP thin clients to provide a stand-alone version of HP Easy Config.

With this application, a user can run HP Easy Config on a PC to configure settings and connections and save those configurations for later use.

HP Easy Tools for PCs is provided as a separate softpaq that can be downloaded and installed to complement the existing Easy Tools located on HP thin clients.

Easy Config

The HP Easy Tools window has three main parts:

- **Left Pane**

All configuration settings categories are listed in the left pane. The HP Easy Tools wizard leads you through each category, but if you want to jump forward or backward, just click the category in the left pane.

- **Center Pane**


When you advance to or select a category in the left pane, the configuration options appear in the center pane. Click on one to open the configuration work area.

- **Right Pane**

As you select a category and a specific setting, descriptions of the category and the specific setting appear in the right pane.

The Easy Config section allows you to configure a variety of features:

- Step [4](#) **Regional** options
- Step [6](#) **Management** options
- Step [8](#) **Peripherals**
- Step [10](#) **Connections**
- Step [13](#) **Summary**

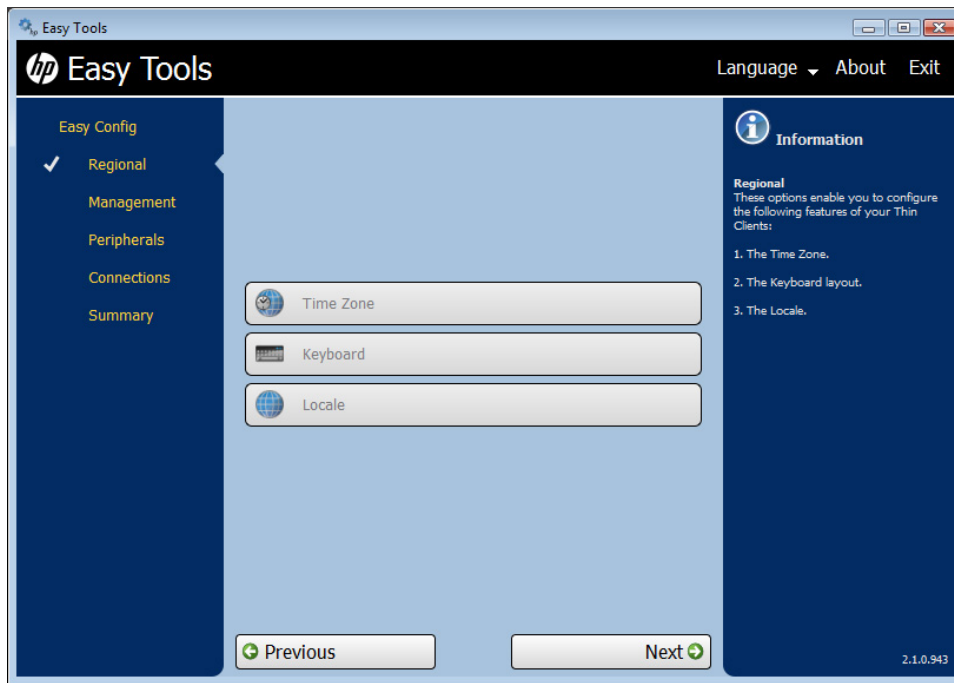
 **NOTE:** Configuration settings categories that have been viewed are marked by a gray check mark. Sections that have been modified are marked by a green check mark.

1. Click **Easy Config** in the left pane to advance to the **Easy Config** section.



2. Click **Load Configuration**. Locate and select the desired configuration file in the dialog box and click **Open** to load the file.
3. Select the platform from the **Thin Client Platform** list.

4. Click **Next** to advance to **Regional** options:




5. Configure the **Regional** options:

a. Time Zone

Select a geographical area and city or region in the desired time zone.

b. Keyboard

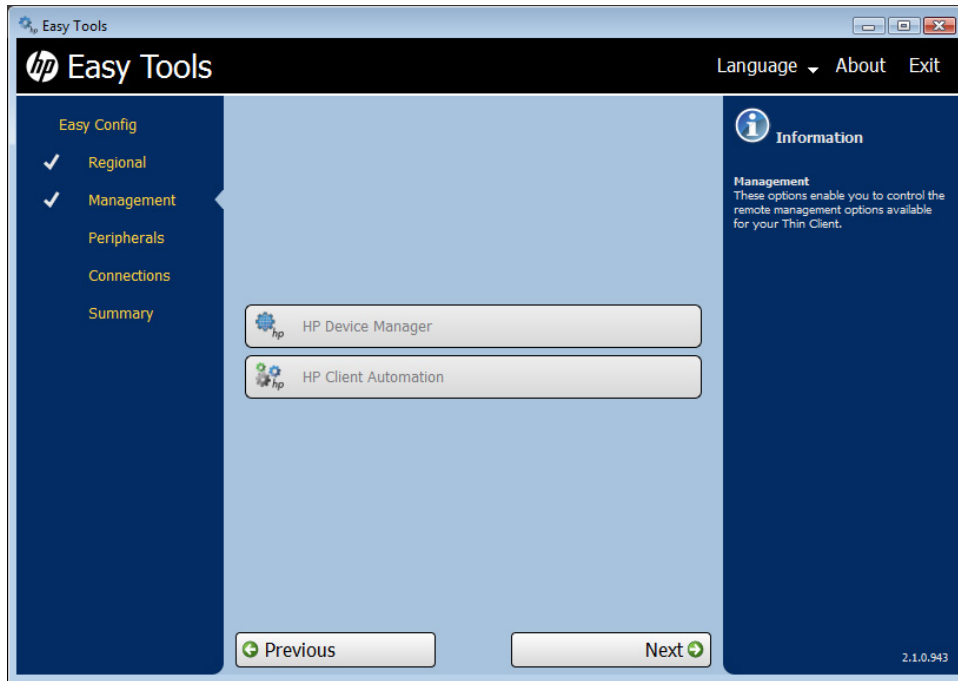
Select a keyboard layout.

 **NOTE:** The keyboard language does not have to match the keyboard you are using to complete the Easy Tools wizard.

c. Locale

Select a language.

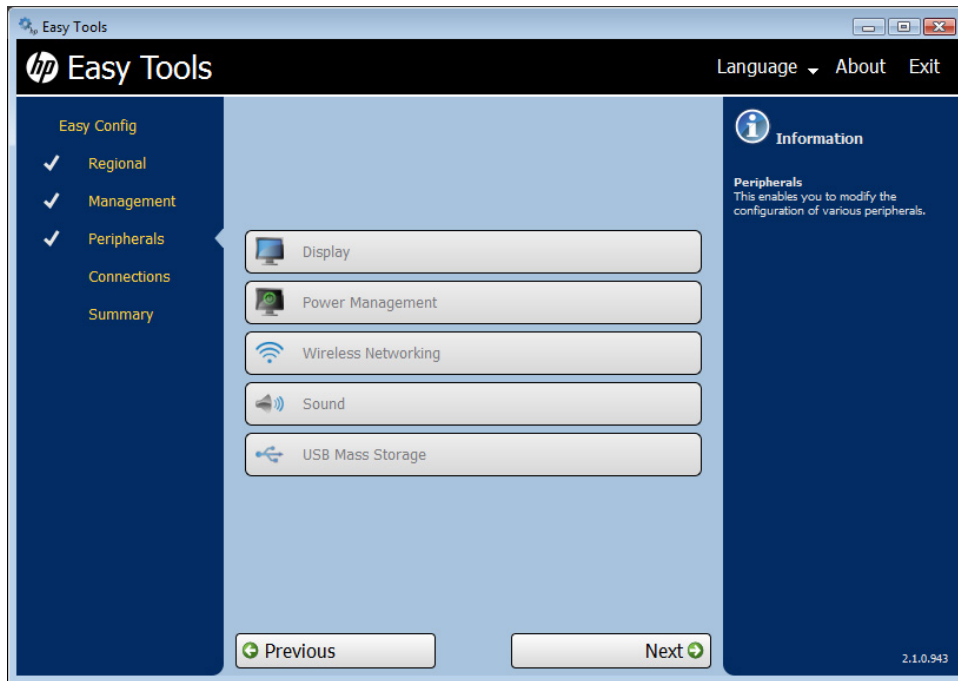
6. Click **Next** to advance to **Management** options.



7. Enable one or more of the **Management** options.

- **HP Device Manager**
- **HP Client Automation**

8. Click **Next** to advance to **Peripherals**.



9. Configure the **Peripherals**:

a. **Display**

(Required) Set the following parameters:

- **Resolution**—Select the monitor resolution.
- **Color depth**—Select a specific color depth supported by the monitor and the software.
- **Refresh rate**—Select the refresh rate applicable to your display/monitor. LCD monitors typically support 60 Hz. CRT monitors display better at higher refresh rates, but that may shorten the life of the monitor and can cause noise.
- **Multi-monitor mode**—Select the screen arrangement for multiple monitors (for up to four monitors).
- **Primary monitor**—Select the primary monitor, if more than one monitor will be used.

b. **Power Management**

Type or select the number of minutes in the **Screen saver on** field. After this specified period of inactivity, the screen saver is displayed.

c. **Wireless Networking**

- **SSID**—Type the Service set identifier (SSID) of the 802.11 wireless local area network (LAN) in the field.
- **Security**—Select the security option.
- **Passphrase**—If you selected a security option other than **None**, type a password in the field:
 - WEP 40-bit: 10 hexadecimal
 - WEP 104-bit: 26 hexadecimal
 - WPA Personal and WPA2 personal: 8 to 63 printable characters

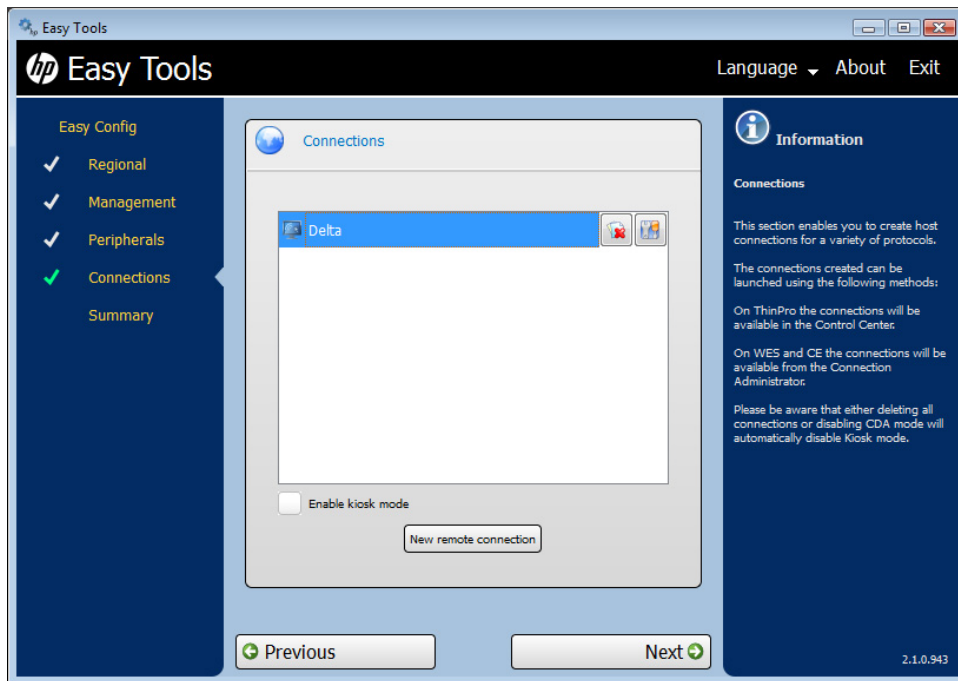
d. **Sound**


Select **Enable** to allow sound or leave the check box clear to keep it switched off.

e. **USB Mass Storage**

- Select **Enable** to enable USB ports, or leave the check box clear to keep USB ports disabled.
- Select **Read only storage** to prevent data from being copied to a USB mass storage device.

10. Click **Next** to advance to **Connections**.

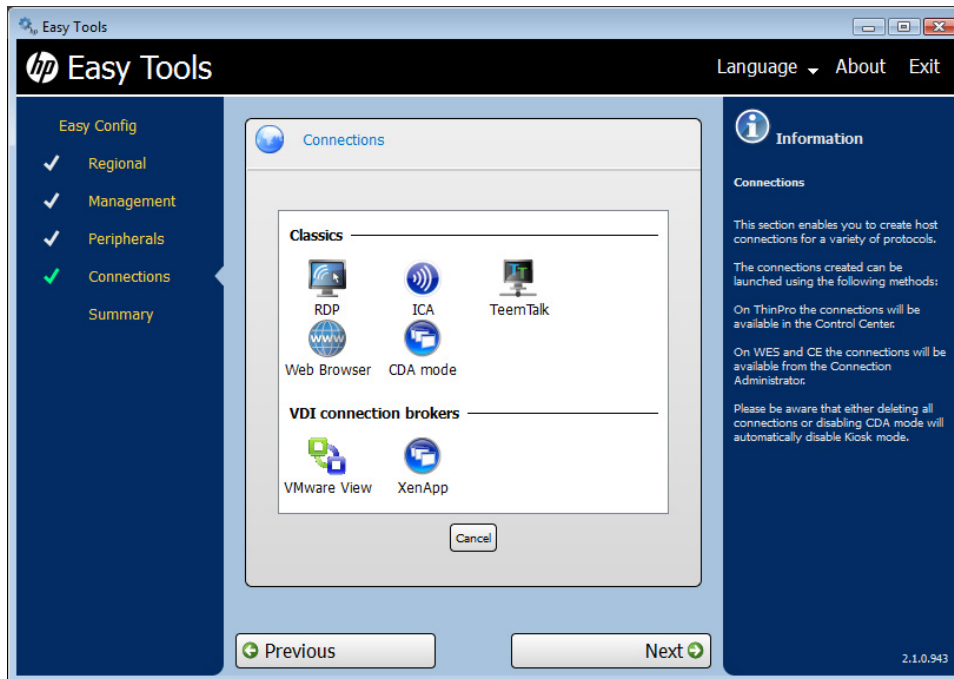


 **NOTE:** If you have not yet added a remote connection, this screen will show **No remote connection**. Proceed to step [12](#) to add a remote connection.

11. Select a connection to make changes to it:

- Select **Enable kiosk mode** to limit the function of the connection.
- Click the delete icon to the right of the connection name to delete the connection.
- Click the edit icon to edit the connection.

12. To add a connection, click **New remote connection**.



Several types of connections may be added:

NOTE: You can have multiple connections. If you enable **Auto start connection**, the connection will start automatically when the thin client is started, and the thin client will stay connected while the thin client is on. The user's work flow may not require all of the connections to be connected all of the time, and it will improve the overall performance of the thin client if unused connections are not connected.

- **Classics**

- **RDP**

1. Type the connection name and the server hostname or IP address in the fields.
2. Select **Auto start connection**, if desired.
3. Click **Save** to save the configuration.

- **ICA**

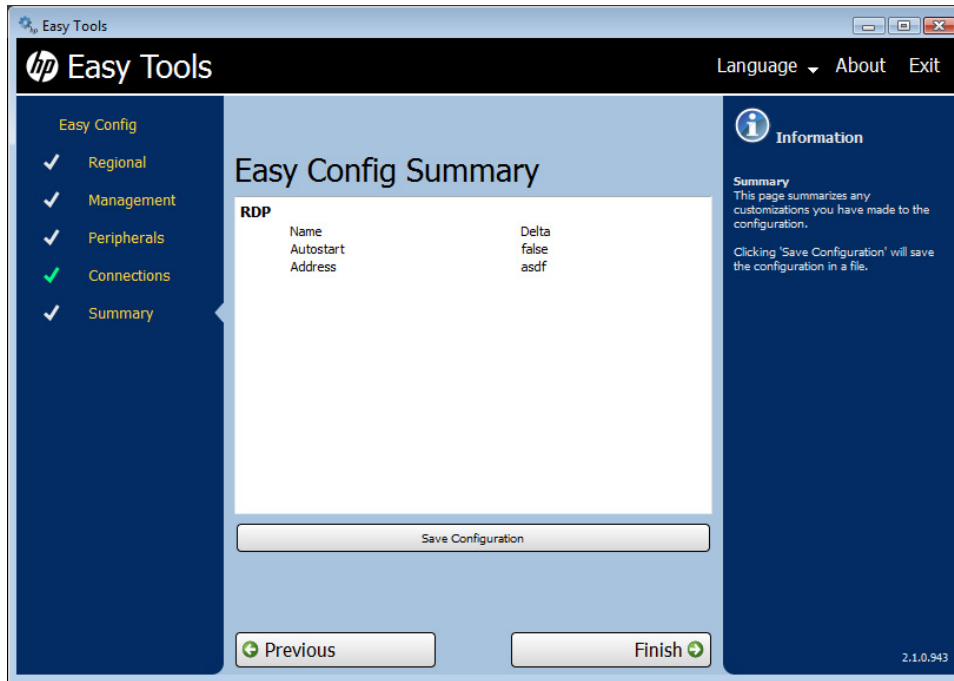
1. Type the connection name and the server hostname or IP address in the fields.
2. Select **Auto start connection**, if desired.
3. Select **Enable HTTPS proxy**, if desired.
4. If you enable the HTTPS proxy, type the HTTPS proxy server hostname or IP address and port number in the fields.
5. Click **Save** to save the configuration.

- **TeemTalk**

1. Click **Use the Chinese Emulation suite**, if desired.

2. Type the connection name in the field.
 3. Select the **Emulation** device.
 4. Select and configure the data **Transport** protocol.
 5. Select **Auto start connection**, if desired.
 6. Click **Save** to save the configuration.
- **Web Browser**
 1. Type the connection name and the server hostname or IP address in the fields.
 2. Select **Auto start connection**, if desired.
 3. Select **Enable proxy**, if desired.
 4. If you enable the proxy, type the proxy server hostname or IP address and port number in the fields.
 5. Click **Save** to save the configuration.
 - **CDA mode**
 1. Select **Enable CDA Mode**, if desired.
 2. Type the server hostname or IP address in the field.
 3. Click **Save** to save the configuration.
- **VDI connection brokers**
 - **VMware View**
 1. Type the connection name and the URL in the fields.
 2. Select **Auto start connection**, if desired.
 3. Click **Save** to save the configuration.
 - **XenApp**
 1. Type the connection name and the URL in the fields.
 2. Select **Auto start connection**, if desired.
 3. Click **Save** to save the configuration.

13. Click **Next** to advance to the **Summary**.



14. Review the **Easy Config Summary**. If it is correct, click **Save Configuration**.