

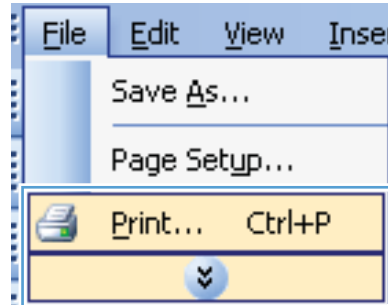


LASERJET PRO 200 COLOR MFP M275nw

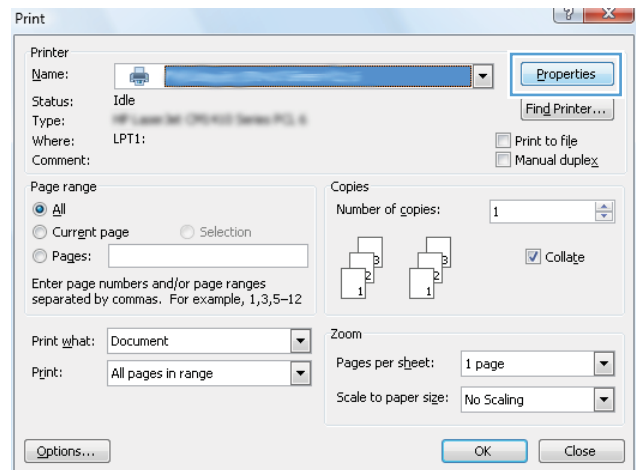


Manually print on both sides (Windows)

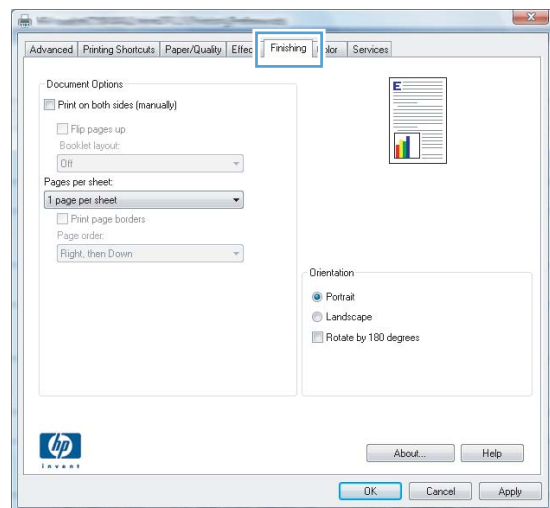
1. From the software program, select the **Print** option.
2. On the **File** menu in the software program, click **Print**.



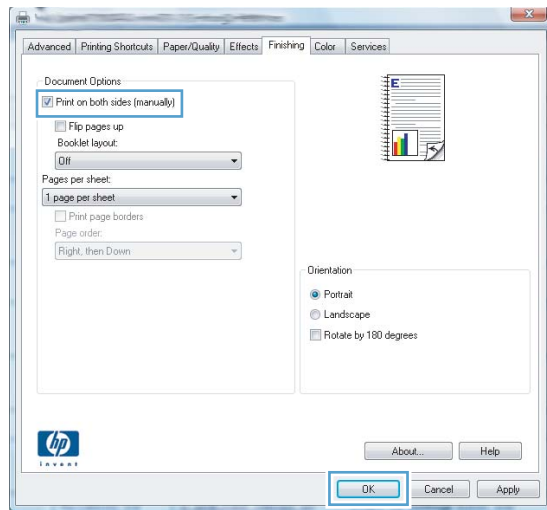
3. Select the product, and then click the **Properties** or **Preferences** button.



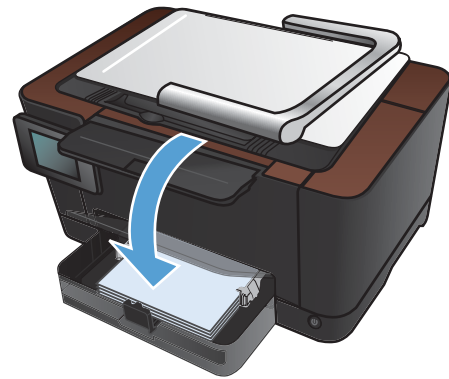
4. Click the **Finishing** tab.



5. Select the **Print on Both Sides (Manually)** check box. Click the **OK** button to print the first side of the job.



6. Retrieve the printed stack from the output bin, and, maintaining the paper orientation, place it with the printed-side facing down in the input tray.



7. On the product control panel, touch the **OK** button.