



# LASERJET ENTERPRISE 500 COLOR



M551n



M551dn



M551xh

EN Installation Guide

CN 設置指南

ID Panduan Instalasi

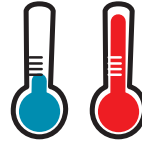
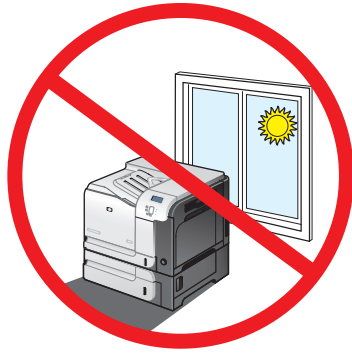
JA 装着ガイド

KO 설치 설명서

TH คู่มือการติดตั้ง

TW 安裝指南

VI Hướng Dẫn Cài Đặt



15° - 27°C  
(59° - 80.6°F)

10% - 80%

**EN** Select a sturdy, well-ventilated, dust-free area, away from direct sunlight to position the product.

**CN** 选择一个稳固、通风良好、无尘且远离直射日光的区域放置产品。

**ID** Untuk meletakkan produk, pilih tempat yang kokoh, berventilasi baik, bebas debu, dan jauh dari sinar matahari langsung.

**JA** プリンタの設置場所には、直射日光を避けて、通気がよく埃の少ない、しっかりした場所を選びます。

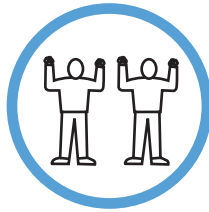
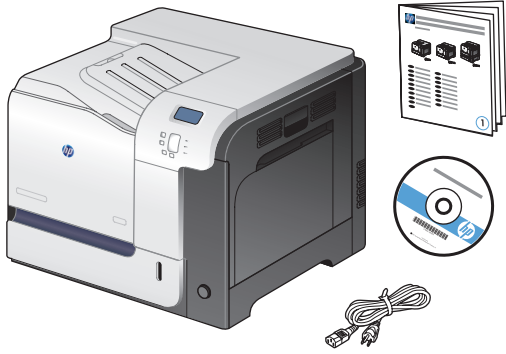
**KO** 직사광선을 피하여 바닥이 단단하고 환기가 잘 되며 먼지가 없는 장소를 선택하여 제품을 내려 놓습니다.

**TH** เลือกวางเครื่องพิมพ์ไว้ในบริเวณที่แข็งแรง มีการระบายอากาศที่ดี ปราศจากฝุ่น และไม่โดนแสงแดดโดยตรง

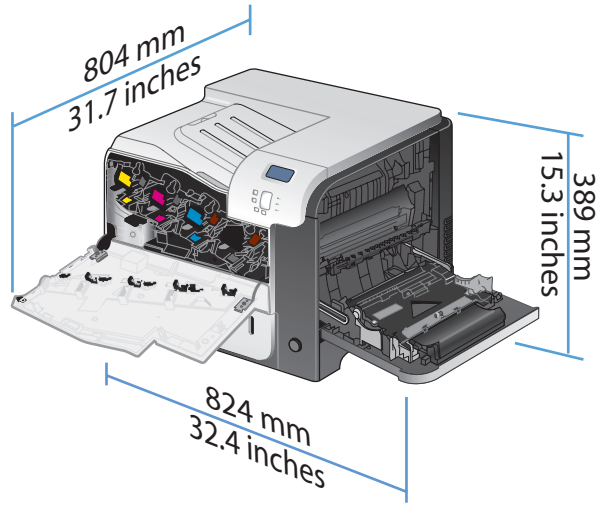
**TW** 請選擇一個平整穩固、通風良好且沒有灰塵的區域放置本產品，並避免陽光直射。

**VI** Chọn nơi vững chắc, được thông hơi tốt, không có bụi bặm, không tiếp xúc trực tiếp với ánh sáng mặt trời để đặt máy in.

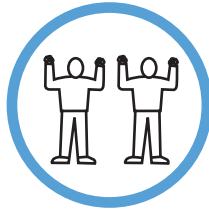
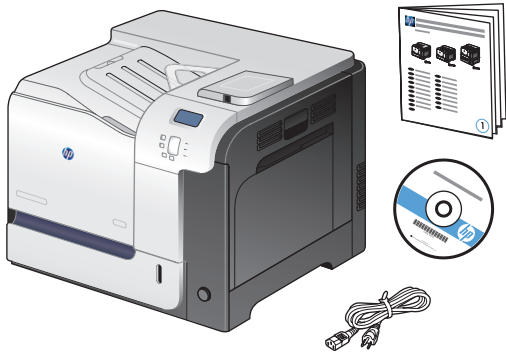
## 2 M551n



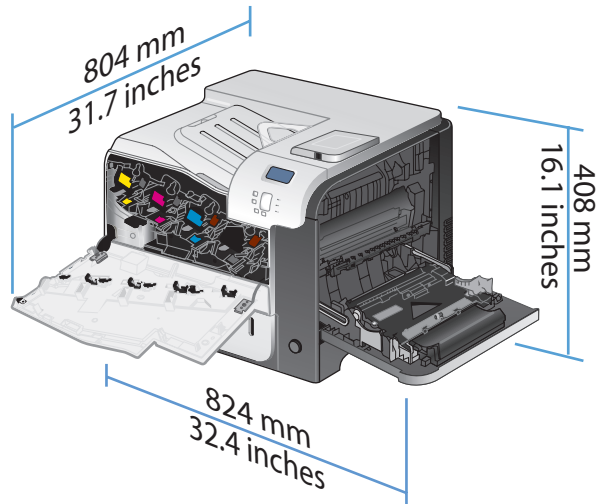
36.5 kg  
80.5 lb



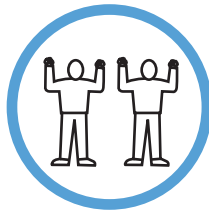
## M551dn



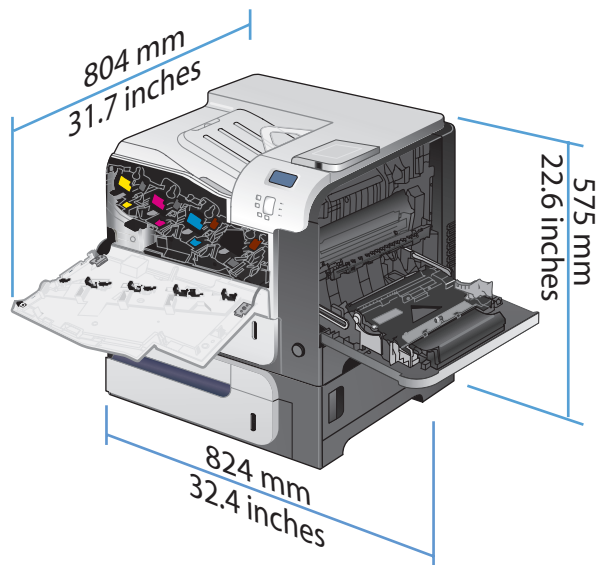
37 kg  
81.6 lb



## M551xh



44.6 kg  
98.3 lb

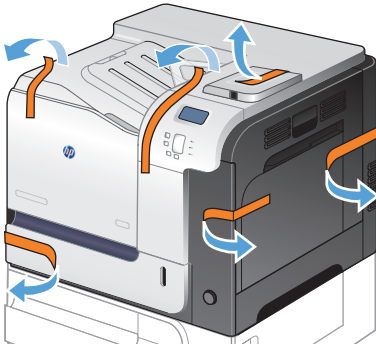


3

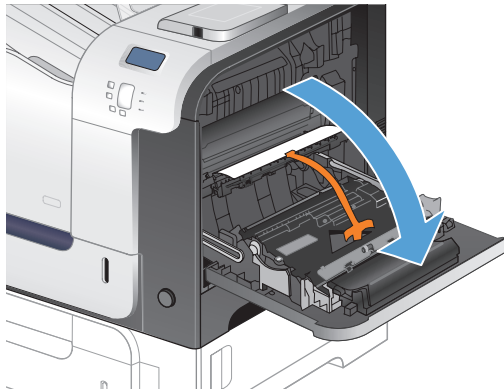
1 M551n M551dn



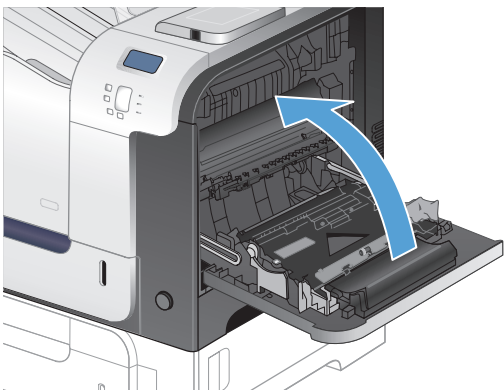
2



4



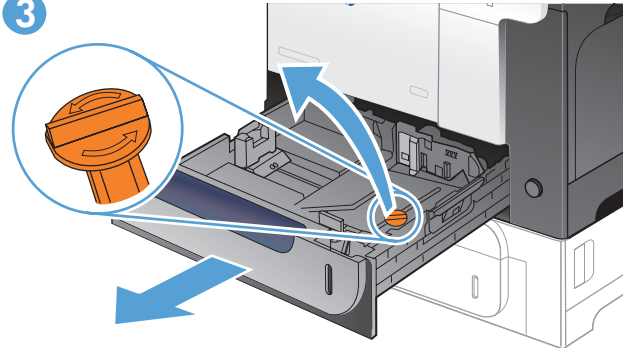
6



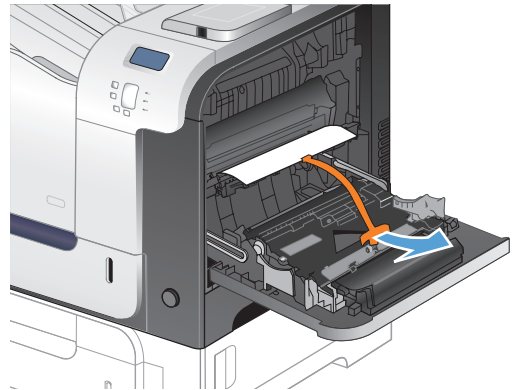
1 M551xh



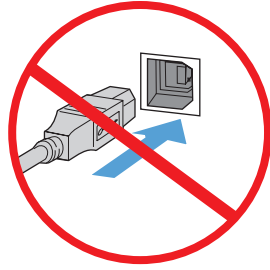
3



5



## 4 USB



**EN** **Caution!** Do not connect the USB or network cable until prompted during software installation.

**CN** **注意!** 在软件安装过程中，在系统提示您之前，不要连接 USB 线缆或网线。

**ID** **Perhatian!** Jangan hubungkan kabel USB atau kabel jaringan sampai diperintahkan sewaktu instalasi perangkat lunak.

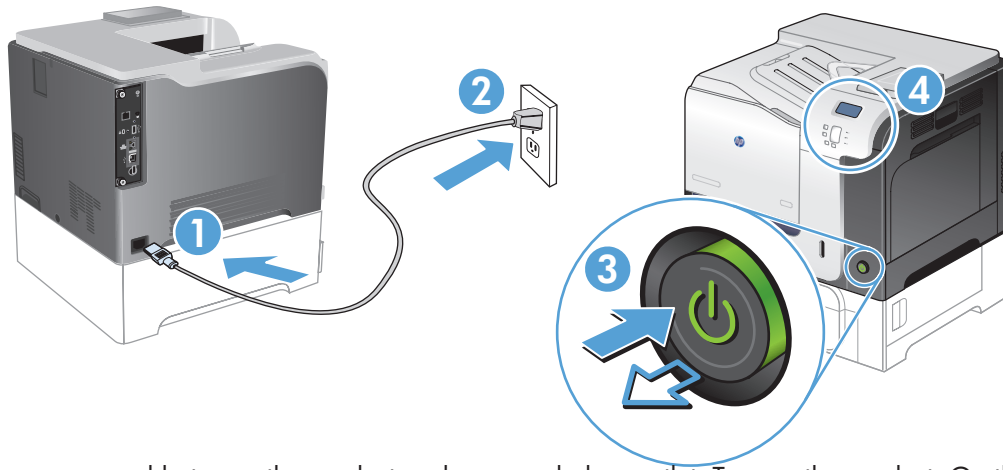
**JA** **注意!** ソフトウェアのインストール画面に指示が表示されるまでUSBまたはネットワークケーブルを接続しないでください。

**KO** **주의!** 소프트웨어 설치 중 메시지가 나타날 때까지 USB 또는 네트워크 케이블을 연결하지 마십시오.

**TH** **ข้อควรระวัง!** ห้ามต่อสายเคเบิล USB หรือสายเคเบิลเครือข่ายจนกว่าจะมีข้อความแจ้งในระหว่างการติดตั้งซอฟต์แวร์

**TW** **警告!** 在軟體安裝期間，若未出現提示，請勿連接 USB 或網路線。

**VI** **Cẩn thận!** Không cắm cáp USB hoặc cáp mạng cho tới khi được hỏi trong quá trình cài đặt phần mềm.



**EN** Connect the power cord between the product and a grounded ac outlet. Turn on the product. On the control panel, set the language and the date/time, if prompted.

**Caution!** Make sure your power source is adequate for the product voltage rating. The voltage rating is on the product label. The product uses either 100-127 Vac or 220-240 Vac and 50/60 Hz. To prevent damage to the product, use only the power cord that is provided with the product.

**CN** 使用电源线将产品连接到接地交流电源插座上。打开产品电源。如果出现提示，请在控制面板上设置语言和日期/时间。

**注意!** 确保电源符合产品的额定电压要求。产品标签上注明了额定电压。本产品使用 100-127 伏（交流）或 220-240 伏（交流），50/60 赫兹的电压。为防止损坏产品，请仅使用产品附带的电源线。

**ID** Sambungkan kabel daya antara produk dan stopkontak AC yang telah terhubung ke arde. Hidupkan produk. Pada panel kontrol, atur bahasa dan tanggal/waktu, jika diminta.

**Perhatian!** Pastikan catu daya Anda memadai untuk tingkat tegangan produk. Tingkat tegangan tercantum pada label produk. Produk ini menggunakan 100-127 Vac atau 220-240 Vac dan 50/60 Hz. Untuk mencegah kerusakan produk, hanya gunakan kabel daya yang disertakan bersama produk.

**JA** 電源コードで、プリンタをアース付ACコンセントに接続します。プリンタの電源を入れます。画面の指示に従い、コントロールパネルで言語および日時を設定します。

**注意!** 使用する電源が、プリンタの定格電圧に適しているか確認してください。定格電圧は製品ラベルに記載されています。プリンタで使用する電圧は 100 ~ 127 VAC または 220 ~ 240 VAC、周波数は 50/60 Hz です。プリンタの損傷を防ぐため、プリンタに付属の電源コード以外は使用しないでください。

**KO** 전원 코드를 제품과 접지된 AC 콘센트 사이에 연결합니다. 제품을 켭니다. 메시지가 나타나면 제어판에서 언어 및 날짜/시간을 설정합니다.

**주의!** 콘센트의 전압이 제품 전압에 맞는지 확인합니다. 전압은 제품 레이블에 나와 있습니다. 제품은 100-127V 또는 220-240V 및 50/60Hz를 사용합니다. 제품의 손상을 방지하려면 제품과 함께 제공된 전원 코드만 사용하십시오.

**TH** ต่อสายไฟจากเครื่องพิมพ์เข้ากับเต้าเสียบที่ใช้ไฟฟ้ากระแสสลับและมีการต่อสายดิน เปิดเครื่องพิมพ์ หากมีข้อความแจ้ง ให้ตั้งภาษาและวันที่และเวลาบนแผงควบคุม ข้อควรระวัง! ตรวจสอบให้แน่ใจว่าแหล่งจ่ายไฟของคุณเหมาะสมสำหรับพิกัดแรงดันไฟฟ้าของเครื่องพิมพ์ พิกัดแรงดันไฟฟ้าอยู่บนฉลากของเครื่องพิมพ์ เครื่องพิมพ์อาจใช้ไฟ 100-127 Vac หรือ 220-240 Vac และ 50/60 Hz เพื่อป้องกันไม่ให้เกิดความเสียหายต่อเครื่องพิมพ์ ให้ใช้สายไฟที่มาพร้อมกับเครื่องพิมพ์เท่านั้น

**TW** 使用電源線連接產品及接地的 AC 插座。開啓本產品電源。當出現提示時，在控制面板上設定語言與日期/時間。

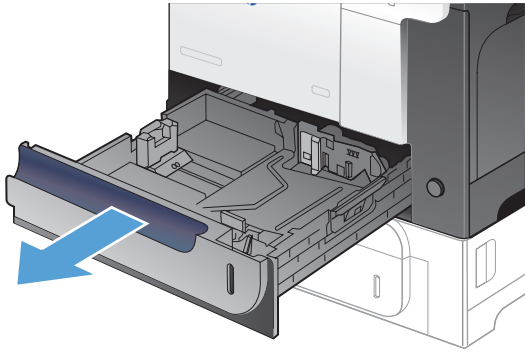
**警告!** 確定電源符合產品的額定電壓。額定電壓標示在產品標籤上。產品使用 100-127 Vac 或 220-240 Vac 其中之一，50/60 Hz。為了避免產品損壞，請僅使用產品隨附的電源線。

**VI** Cắm dây dẫn vào máy in và ổ điện ac có tiếp đất. Bật máy in. Trên màn hình điều khiển, hãy cài đặt ngôn ngữ và ngày/giờ nếu được hỏi.

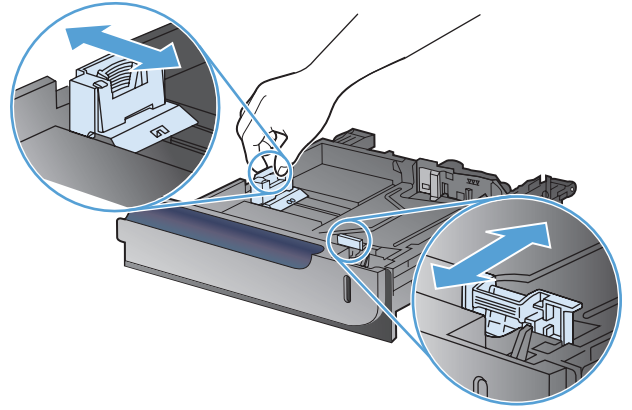
**Cẩn thận!** Đảm bảo rằng nguồn điện của bạn đầy đủ đối với định mức điện áp của máy in. Định mức điện áp được ghi trên nhãn sản phẩm. Máy in sử dụng điện áp 100-127 Vac hoặc 220-240 Vac và 50/60 Hz. Để tránh làm hỏng máy in, chỉ sử dụng dây điện được cung cấp cùng máy in.



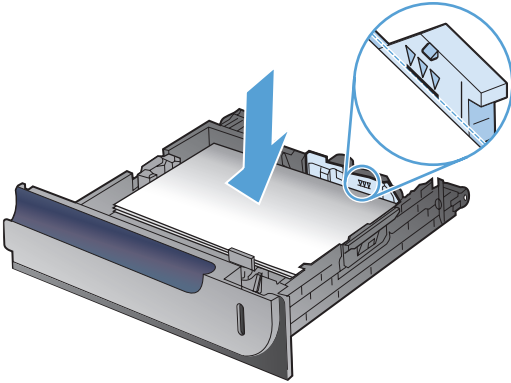
6 1



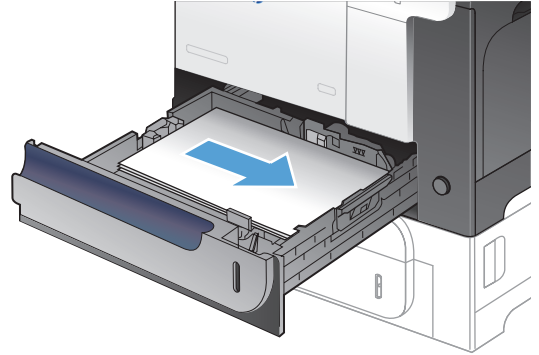
2



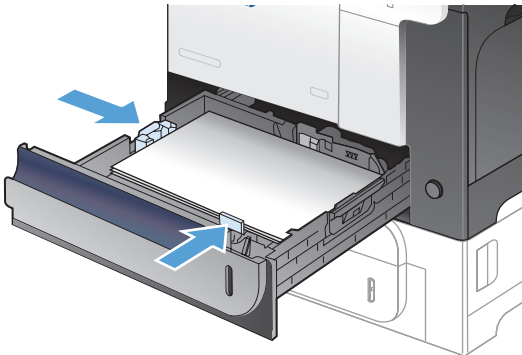
3



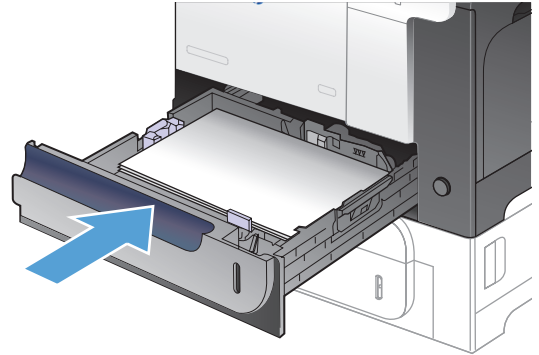
4



5

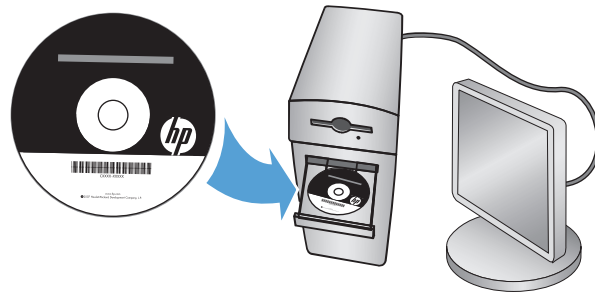


6



7





**EN** For more product and problem-solving information go to the User Guide or [www.hp.com/support/lj500colorM551](http://www.hp.com/support/lj500colorM551)

**CN** 有关产品及问题解决方面的更多信息，请参阅《用户指南》或者访问 [www.hp.com/support/lj500colorM551](http://www.hp.com/support/lj500colorM551)

**ID** Untuk informasi produk dan cara mengatasi masalah, lihat Panduan Pengguna atau kunjungi [www.hp.com/support/lj500colorM551](http://www.hp.com/support/lj500colorM551)

**JA** 製品および問題の解決についての詳細は、ユーザーガイドまたは [www.hp.com/support/lj500colorM551](http://www.hp.com/support/lj500colorM551) を参照してください。

**KO** 제품 및 문제 해결에 대한 자세한 내용은 사용 설명서 또는 [www.hp.com/support/lj500colorM551](http://www.hp.com/support/lj500colorM551) 을 참조하십시오.

**TH** สำหรับข้อมูลเพิ่มเติมของเครื่องพิมพ์และการแก้ไขปัญหา โปรดดูคู่มือผู้ใช้ หรือไปที่ [www.hp.com/support/lj500colorM551](http://www.hp.com/support/lj500colorM551)

**TW** 如需有關產品與問題解答的詳細資訊，請參閱使用指南或 [www.hp.com/support/lj500colorM551](http://www.hp.com/support/lj500colorM551)

**VI** Để biết thêm thông tin về sản phẩm và cách khắc phục sự cố, hãy tham khảo mục Hướng dẫn sử dụng hoặc truy cập trang web [www.hp.com/support/lj500colorM551](http://www.hp.com/support/lj500colorM551)











## Copyright and License

© 2011 Copyright Hewlett-Packard Development Company, L.P.

Reproduction, adaptation or translation without prior written permission is prohibited, except as allowed under the copyright laws.

The information contained herein is subject to change without notice.

The only warranties for HP products and services are set forth in the express warranty statements accompanying such products and services. Nothing herein should be construed as constituting an additional warranty. HP shall not be liable for technical or editorial errors or omissions contained herein.

Part number: CF079-90940

Edition 1, 9/2011

## FCC Regulations

This equipment has been tested and found to comply with the limits for a Class A digital device, pursuant to Part 15 of the FCC rules. These limits are designed to provide reasonable protection against harmful interference in a residential installation. This equipment generates, uses, and can radiate radio frequency energy, and if not installed and used in accordance with the instruction manual, may cause harmful interference to radio communications. Operation of this equipment in a residential area is likely to cause harmful interference in which case the user will be required to correct the interference at his own expense.

NOTE: Any changes or modifications to the printer that are not expressly approved by HP could void the user's authority to operate this equipment. Use of a shielded interface cable is required to comply with the Class A limits of Part 15 of FCC rules.

## Trademark Credits

Windows® is a U.S. registered trademark of Microsoft Corporation.

## 版权与许可

© 2011 Copyright Hewlett-Packard Development Company, L.P.

未经事先书面许可，严禁进行任何形式的复制、改编或翻译，除非版权法另有规定。

此处包含的信息如有更改，恕不另行通知。

随 HP 产品和服务附带的明确保修声明中阐明了此类产品和服务的全部保修服务。本文档中的任何内容均不应理解为构成任何额外保证。HP 对本文档中出现的技术错误、编辑错误或遗漏之处概不负责。

部件号：CF079-90940

Edition 1, 9/2011

## FCC 规则

本设备经测试，确认符合 FCC 规则第 15 部分有关 A 级数字设备的限制规定。在住宅区安装时，这些限制为防止有害干扰提供了合理保护。本设备会产生、使用并可能辐射射频能量；如果不按照说明手册进行安装和使用，可能会对无线电通信造成有害干扰。在住宅区使用本设备可能会产生有害干扰，排除此类干扰所需的费用应由用户自行承担。

注：未经 HP 公司的明确同意而擅自更改或改动本打印机，将使用户失去操作本设备的权利。使用屏蔽的接口线缆时必须遵循 FCC 规则第 15 部分中的 A 类限制。

## 商标说明

Windows® 是 Microsoft Corporation 在美国的注册商标。



CF079-90940

