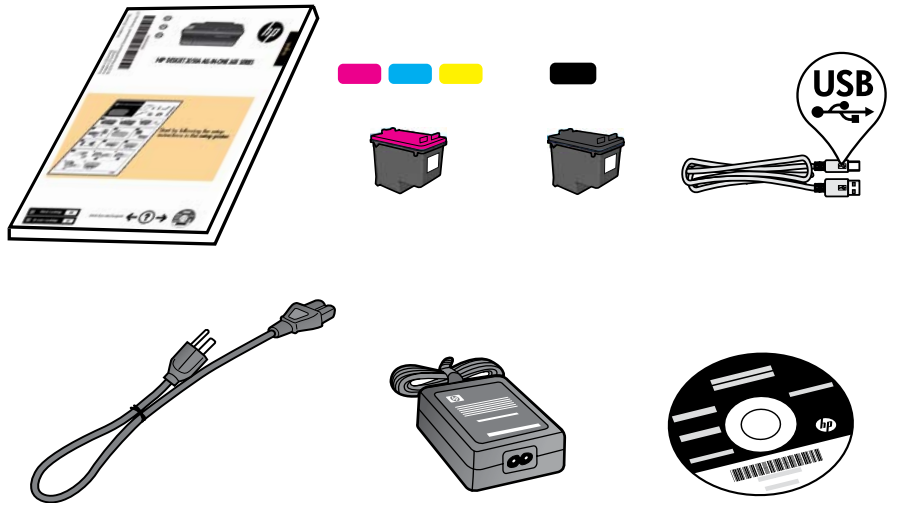


hp DESKJET 3050A ALL-IN-ONE J611 SERIES



从这里开始
Start Here
Mulai Dari Sini



ZHCN
EN
ID

CR231-90013

1

① 撕开胶带和纸板。
Remove tape and cardboard.
Lepas pita dan papan kardus.

②

③

2

① ② ③

连接电源。
Connect Power.
Hubungkan kabel daya printer.

3

4

按 “开/关机”按钮。
Press On button.
Tekan tombol Hidup .

5

设置语言和地区。
Set language and region.
Set bahasa dan wilayah.

6

打开出纸盒。
Open output tray.
Buka baki keluaran.

7

打开墨盒门。
Open cartridge door.
Buka pintu kartrid.

8

①

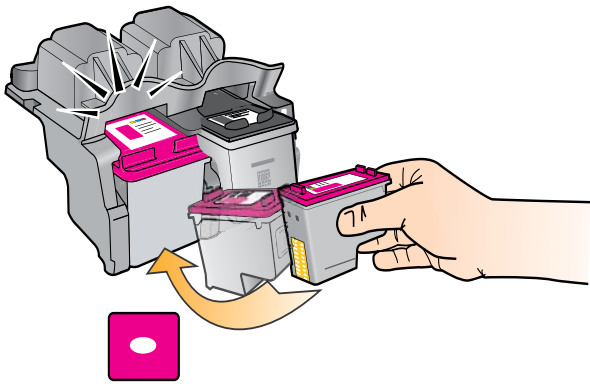
拉住粉色小片，撕掉透明胶带。
Pull pink tab to remove clear tape.
Tarik pita merah muda untuk melepas lapisan plastik bening.

②

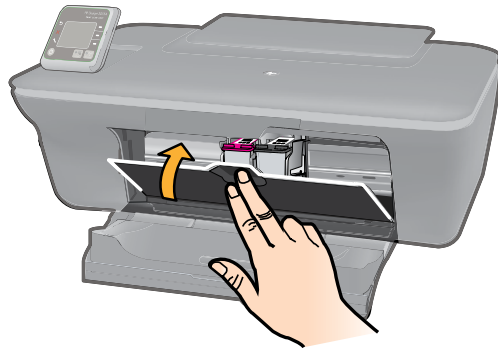
将墨盒推入托架，直到卡入到位。
Push cartridges into carriage until they snap.
Dorong kartrid ke dalam kereta sampai terkunci.

③

4



5



关闭墨盒门。
Close cartridge door.
Tutup pintu kartrid.

9

1



抬起进纸盒。
Raise input tray.
Angkat baki masukan.

2



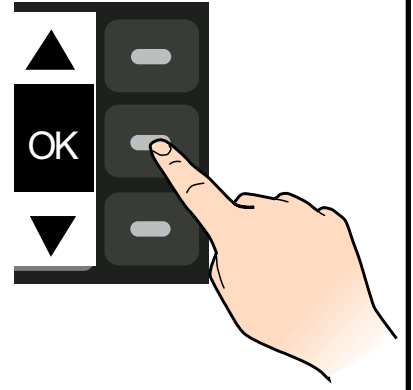
拉出出纸盒延长板。
Pull out tray extender.
Tarik pemanjang baki keluar.

3



滑动导轨。放入白纸。
Slide guide. Load white paper.
Geser pemandu kertas. Muatkan kertas putih.

4



10

1



2



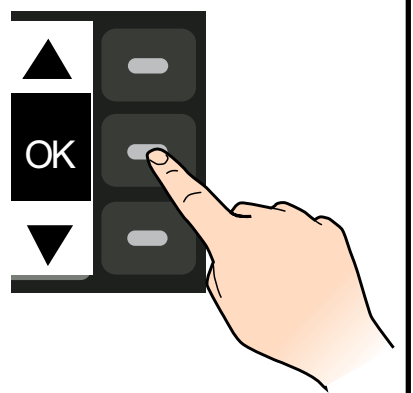
将校准页正面朝下放入。
Place alignment page face down.
Letakkan halaman penyelarasan menghadap ke bawah.

3

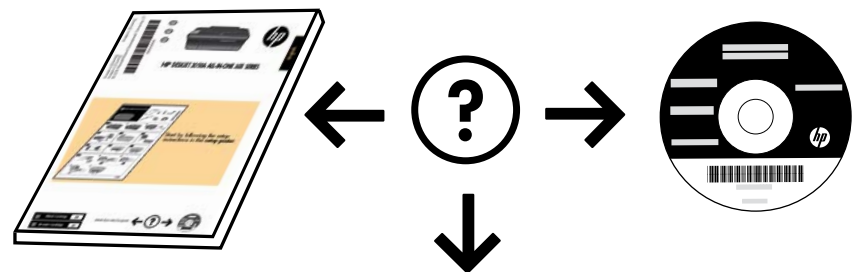
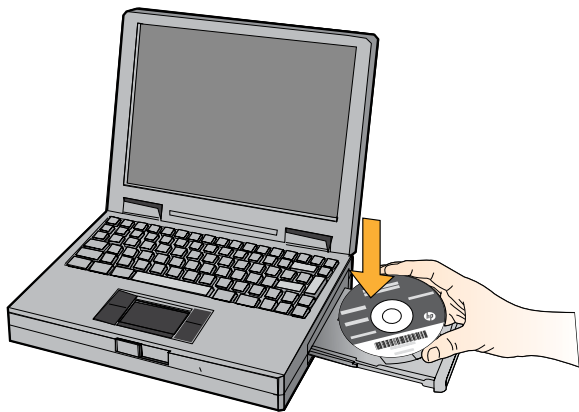


关闭盖子。
Close lid.
Tutupkan sungkup.

4



11



www.hp.com/support

Printed in [English]
Printed in [Simplified Chinese]