

Illustrated Parts & Service Map

HP TouchSmart 9300 Elite All-in-One Business PC



© 2011 Hewlett-Packard Development Company, L.P. The information contained herein is subject to change without notice. HP shall not be liable for technical or editorial errors or omissions contained herein. Intel, Pentium, Intel Inside, and the Intel logo are trademarks or registered trademarks of the Intel Corporation and its subsidiaries in the U. S. and other countries.

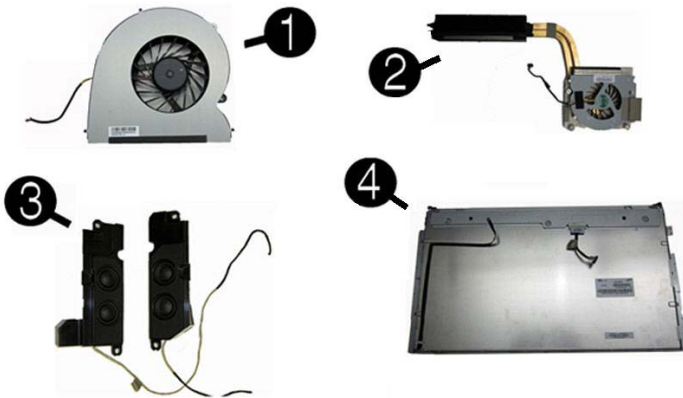
Document Number 654197-002. 2nd Edition December 2011.



Key Specifications

Processor Type	Intel® Pentium dual core, Intel Core™i7. i5, i3
RAM Type	PC3-10600 DDR3 non-ECC SDRAM (runs at 1333 MHz)
Maximum RAM Supported	16 GB (4 slots)
Expansion Slots	<ul style="list-style-type: none"> (1) full-height mini PCIe x1 (1) half-height mini PCIe x1 (1) graphics slot
Graphics Adapter	Integrated Intel HD graphics; optional MXM graphics
Chipset	Intel H67 Express
Drive Support	<ul style="list-style-type: none"> (1) 5.25-inch Slimline (1) 3.5-inch hard drive
I/O Interfaces	Side: (2) USB 2.0 ports, microphone, headphone Bottom: (1) USB 2.0 port Rear: (4) USB, DisplayPort, RJ-45 Ethernet, line out
Operating Systems	<ul style="list-style-type: none"> Windows 7 Professional 32 & 64 FreeDOS

Spare Parts



Miscellaneous Parts

1	Fan	652321-001
2	Fan sink, UMA graphics (incl replacement thermal material)	658988-001
*	Fan sink, discrete graphics (incl replacement thermal material)	658987-001
3	Speaker, right	652274-001
3	Speaker, left	652275-001
4	Display panel, 23-inch, ZBD	658981-001
*	Display panel, 23-inch, non-ZBD	658979-001
*	Power supply, 150W, external	651587-001
*	Power supply, 180W, external	654599-001
*	Power supply, 230W, external	654600-001
*	Left side cap, no optical drive	658989-001
*	Left side cap, 1394	670181-001
*	Right side cap	670182-001
*	Mouse, USB, laser	609251-001
*	Mouse, USB, optical, Portia	621416-001
*	Mouse, washable	619580-001
*	Remote control, for use in North America	642086-001
*	Remote control, for use in Asia/Pacific and Latin America regions	642181-001

*Not shown



System Board, Memory, Processors

System boards with thermal grease, alcohol pad, and CPU socket cover		
1	System board	658978-001
Memory modules (PC3-10600)		
2	2 GB	646800-001
*	4 GB	646801-001
Processors (include thermal replacement material)		
Intel Core i7:		
*	2600, 3.4 GHz, 8-MB L3 cache, 95W	638632-001
Intel Core i5:		
*	2500 processor, 3.3 GHz, 6-MB L3 cache, 95W	638631-001
*	2400 processor, 3.1 GHz, 6-MB L3 cache, 95W	638630-001
*	2300 processor, 2.8 GHz, 6-MB L3 cache, 95W	654601-001
Intel Core i3:		
*	2120 processor, 3.3 GHz, 3-MB L3 cache, 65W	638629-001
*	2100 processor, 3.1 GHz, 3-MB L3 cache, 65W	638628-001
Intel Pentium Dual-Core:		
*	G850 processor, 2.9 GHz, 3-MB L3 cache, 65W	655973-001
*	G840 processor, 2.8 GHz, 3-MB L3 cache, 65W	655972-001
*	G620 processor, 2.6 GHz, 3-MB L3 cache, 65W	655971-001

* Not shown

Keyboards (not illustrated)

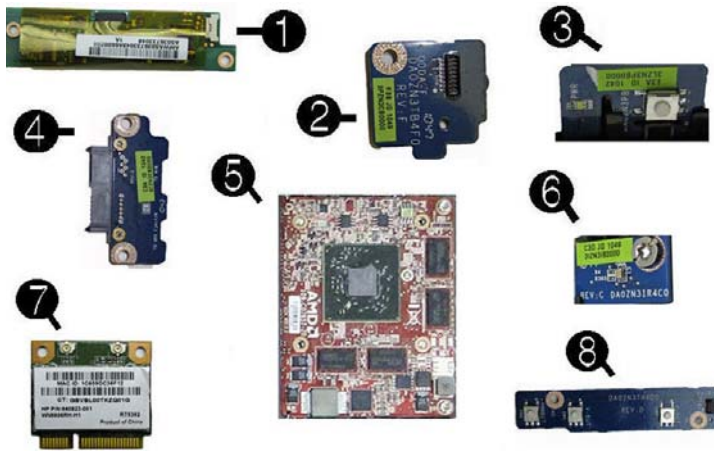
USB for use in Brazil	590271-201
USB for use in French Canada	590271-121
USB for use in Latin America	590271-161
USB for use in the United States	590271-001
USB Enterprise for use in Brazil	658990-201
USB Enterprise for use in French Canada	658990-121
USB Enterprise for use in Latin America	658990-161
USB Enterprise for use in the United States	658990-001
Smartcard, USB for use in Brazil	631411-204
Smartcard, USB for use in French Canada	631411-124
Smartcard, USB for use in the United States	631411-004
Washable, USB for use in French Canada	613125-121
Washable, USB for use in the United States	613125-001
Mini, USB for use in French Canada	611375-123
Mini, USB for use in the United States	611375-003
USB hub for use in the United States	631913-001

Mass Storage Devices (not illustrated)

HP SuperMulti DVD Writer Drive	583092-001
HP Slim Slot Blu-ray Combo Drive	583093-001
1 TB hard drive	636930-001
750 GB hard drive	639363-001
500 GB hard drive	636929-001
320 GB hard drive	634824-001
250 GB hard drive	636927-001
160 GB solid-state drive	646809-001
80 GB solid-state drive	607817-001

Cables (not illustrated)

IR blaster cable	652276-001
Optical drive transfer cable, 275 mm	652286-001
Optical drive eject cable, 190 mm	652299-001
Sensor2 cable, 100 mm	654301-001
FFC I/O cable, 449 mm	658980-001
G-sensor cable	658984-001
NTSC cable	670180-001
UMA (Integrated graphics) I/O-DataPort cable	670185-001
MXM (Discrete graphics) I/O-System board cable	670186-001

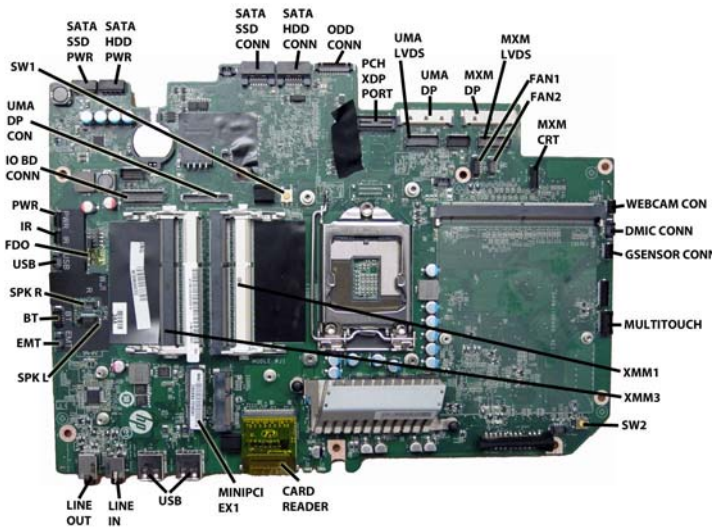


Boards

1	Inverter	658982-001
2	Optical drive eject board	652312-001
3	Power board	652305-001
4	Optical drive connector board	652311-001
5	Graphics cards	
*	GFX, 1-GB	652164-001
*	ATI MXM30 Viper 1-GB HD5570	628380-001
6	Infrared sensor board	652307-001
7	WLAN modules	
*	Intel Centrino® Advanced-N 6205 802.11a/b/g/n	652165-001
*	802.11b/g/n	654602-001
*	HP WLAN combo 802.11b/g/n + Bluetooth 2.1 card	652279-001
8	Volume button board	652306-001
*	G-sensor board	658983-001
*	I/O board with DataPort, with IR	670183-001
*	I/O board with DataPort, no IR	670184-001
*	TV tuner module	613990-001
*	Webcam modules and parts	
*	Webcam module without DMIC	652277-001
*	Webcam module, 2.0 MP, FHD	658985-001
*	Webcam lens cover	654598-001
*	Webcam wheel cap	658986-001

*Not shown

System Board



System Board Components

SATA SSD PWR	XMM3
SATA HDD PWR	SW2
SATA SSD CONN	CARD READER
SATA HDD CONN	MINIPCIEX1
ODD CONN	USB
PCH XDP PORT	LINE IN
UMA LVDS	LINE OUT
UMA DP	SPK L
MXM DP	EMT
MXM LVDS	BT
FAN1	SPK R
FAN2	USB
MXM CRT	FDO
WEBCAM CON	IR
DMIC CONN	PWR
GSENSOR CONN	IO BD CONN
MULTITOUCH	UMA DP CON
XMM1	SW1

Common POST Error Messages

Screen Message	Probable Cause	Recommended Action
101-Option ROM Error	System ROM or expansion board option ROM checksum.	1. Verify ROM, reflash if required 2. Remove recently added cards to see if problem remains. 3. Clear CMOS. If message disappears, may be card problem. 4. Replace system board
103-System Board Failure	DMA or timers	1. Clear CMOS memory. 2. Remove expansion boards. 3. Replace system board.
164-Memory Size Error	Memory amount has changed since the last boot (memory added/removed).	Press the F1 key to save the memory changes.
164-Memory Size Error	Incorrect memory configuration	1. Run Setup (F10). 2. Make sure memory module(s) installed properly. 3. If third-party memory added, test using HP-only memory. 1. Verify proper module type.
201-Memory Size Error	RSM failure	1. Ensure memory modules are correctly installed. 2. Verify proper module type. 3. Remove and replace faulty module(s). 4. If error persists after replacing modules, replace system board.
214-DIMM Configuration Warning	Populated DIMM configuration is not optimized	Rearrange DIMMs so that each channel has the same amount of memory.
301-, 304-Keyboard error	Keyboard failure.	1. Reconnect keyboard with system turned off. 2. Check kybd connection or keys. 3. Check connector for bent or missing pins. 4. Replace keyboard. 5. If 304, possible sys bd problem.
511-Display Adapter Failure	CPU Fan not Detected.	1. Reseat CPU fan. 2. Reseat fan cable. 3. Replace CPU fan.

Computer Setup.

Heading	Option/Description
File	System Information - Lists the following main system specifications: <ul style="list-style-type: none"> Product name SKU number (some models) Processor type/speed/stepping Memory size/speed/ no. channels Integrated MAC Address System BIOS Chassis serial number Asset tracking number
	About - Displays copyright notice.
	Set Time and Date - Allows you to set system time and date.
	Apply Defaults and Exit - Applies the selected default settings and clears any established passwords.
	Ignore Changes and Exit-Exits setup without applying or saving any changes.
	Save Changes and Exit - Saves changes to system configuration or default settings and exits Computer Setup.
Storage	Device Configuration - Lists all installed BIOS-controlled storage devices. <ul style="list-style-type: none"> Hard Disk - size, model, firmware, serial number, connector color, SMART, emulation type CD-ROM - model, firmware, serial number, connector color.
	Storage Options: SATA Emulation (AHCI, IDE).
	DPS Self-Test - Lets you execute self-tests on DPS-capable ATA hard drives.
	Boot Order - Allows you to specify boot order or order of attached hard drives.
Security	Setup Password-Lets you set and enable setup (Administrator) password.
	Power-On Password - Allows you to set and enable power-on password.
	Password Options - When any password exists allows you to lock legacy resources, enable/disable network server mode, specify password requirement for warm boot, and allows you to enable/disable Setup Browse Mode, enable/disable Stringent Password, set up password prompt on F9, F11, & F12.
	Device Security (some models) -Enables/disables audio, network controllers, SATA0-2.
	USB Security - Allows you to enable/disable groups of or individual USB ports. Front USB Ports 4,5, Rear USB Ports 0-3. internal USB ports 6, 8, 9, 10, 11, 13.
	Slot Security - Allows you to enable/disable any PCI Express x16 or x1 slot.
	Network Service Boot - Enables/disables boot from OS on a network server.
	System IDs - Allows you to set Asset tag, ownership tag, chassis serial number/UUID, and keyboard locale setting.
	System Security (some models) - Allows you to enable/disable: <ul style="list-style-type: none"> Data Execution Prevention Protected Audio Video Path (PAVP) (some models) Virtualization Technology(some models) Virtualization Technology Directed I/O (some models) Trusted Execution Technology I/O Embedded Security Device Support OS management of Embedded Security Device (some models)
	Master Boot Record Security - Lets you save or restore master boot record.
	Setup Security Level - Provides method to allow users limited access to change specified setup options without knowing Setup password.
Power	Hardware Power Management-Lets you enable/disable SATA bus power management and S5 maximum power savings.
	Thermal - Allows you to control minimum permitted fan idle speed.
Advanced	Power-On Options - Allows you to set: <ul style="list-style-type: none"> POST mode-QuickBoot, FullBoot, Clear Memory, FullBoot every x days After Power Loss - Off/on/previous state POST Delay - None, 5, 10, 15, or 20 seconds POST messages - Enable/disable
	BIOS Power-On - Allows you to set the computer to turn on at a preset time.
	PCI Devices - Lists installed PCI devices with their IRQ settings and allows you to reconfigure IRQ or disable devices.
	Bus Options (some models) - Allows you to enable/disable PCI SERR# Generation and PCI VGA palette snooping.
	Device Options - Allows you to set: <ul style="list-style-type: none"> Num Lock State at Power-On (on/off) Hyper-threading Internal Speaker (some models) NIC Option ROM Download (PXE, Disable, iSCSI)
	Management Devices - Only displayed in the Advanced Menu when the BIOS detects multiple management options. This option is for installed NIC cards that support ASF or DASH. Use the Management Devices menu to select if the BIOS management operations will be through the embedded solution or one of the installed NIC cards.