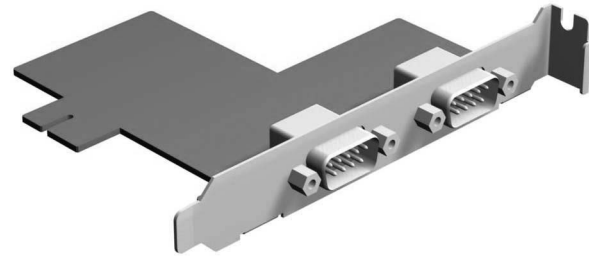




# Powered Serial Card Installation Guide

## HP rp5800 Retail System



© Copyright 2011 Hewlett-Packard Development Company, L.P. The information contained herein is subject to change without notice. The only warranties for HP products and services are set forth in the express warranty statements accompanying such products and services. Nothing herein should be construed as constituting an additional warranty. HP shall not be liable for technical or editorial errors or omissions contained herein.  
Printed in

First Edition: May 2011



656496-001

### Before Your Begin

Before installing the HP Powered Serial Card, be sure to power off the rp5800 and disconnect the power cord from the power outlet.

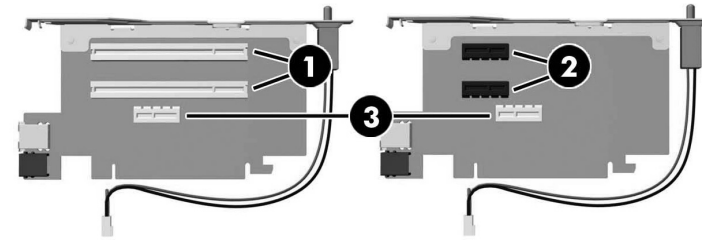
**WARNING!** To avoid the risk of serious injury, ensure that the power cord is unplugged from the electrical outlet at the wall before installing the card. Failure to do so may expose you to the risk of electric shock.

**CAUTION:** To avoid the risk of damage to the system, ensure that the power cord is unplugged from the electrical outlet at the wall before installing the card.

### Installation Guidelines

The HP Powered Serial card is a full-height expansion card that installs into the riser card on the rp5800 computer.

There are two riser cards available from HP for the rp5800 computer. One has two PCI slots and the other has two PCI Express x1 slots. On both cards the bottom slot is designated for the Powered Serial Port expansion card.



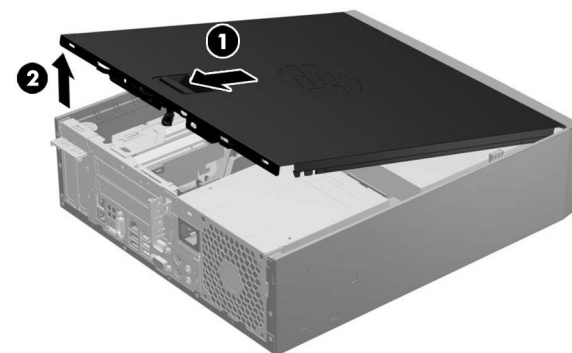
No.	Riser Card Slots
❶	PCI Expansion Card slots
❷	PCI Express x1 Expansion Card slots
❸	Powered Serial Expansion Card slots

**CAUTION:** The Powered Serial Port expansion card slot ❸ on the riser card looks very similar to a PCIe x1 expansion card slot. DO NOT attempt to install the Powered Serial Port expansion card into a PCIe x1 slot. It must be installed in the bottom slot that is specifically designed for the Powered Serial port expansion card.

**NOTE:** Although there are three slots in each riser card, you can only install two expansion cards in the riser card: one in the top slot and one in either the middle slot or the bottom slot. If an expansion card is currently installed in the middle slot on the riser card, you must move that card to the upper slot to make room for the Powered Serial Port expansion card in the bottom slot.

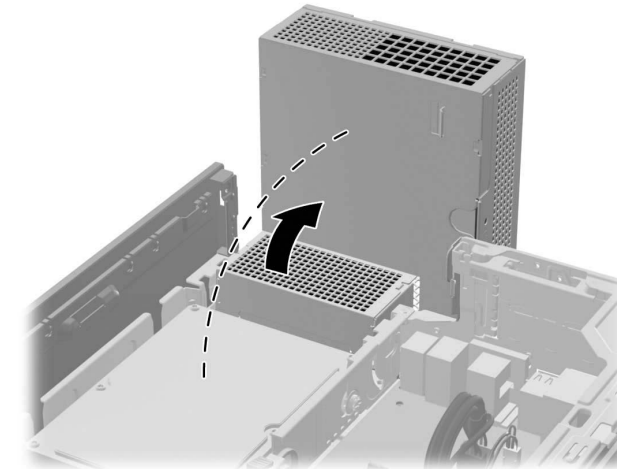
### Installing the Card

1. Turn off power to the system and disconnect the power cord from the power outlet.
2. Slide the access panel handle toward the rear of the computer ❶ then lift the access panel up and off the computer ❷.

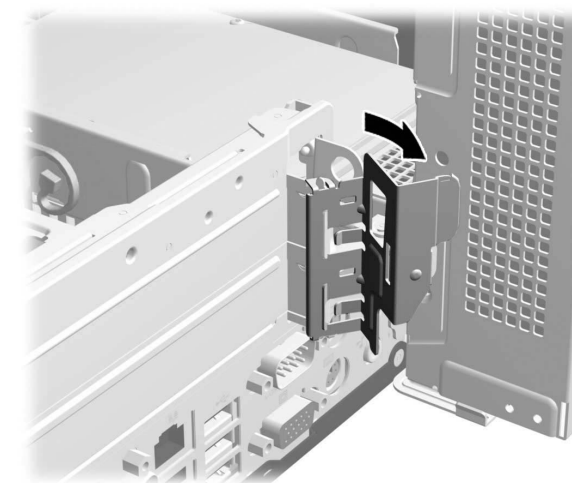


3. Rotate the power supply all the way back to access the full-height expansion card retention latch.

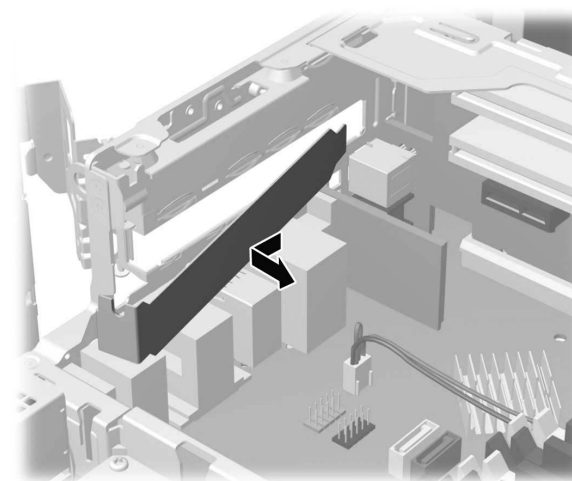
**NOTE:** If you are using a PS/2 mouse and/or PS/2 keyboard, make sure they are unplugged from the rear of the computer so that the connectors do not block the power supply from rotating all the way back.



4. Pull back the green tab on the full-height expansion card retention latch to open the latch

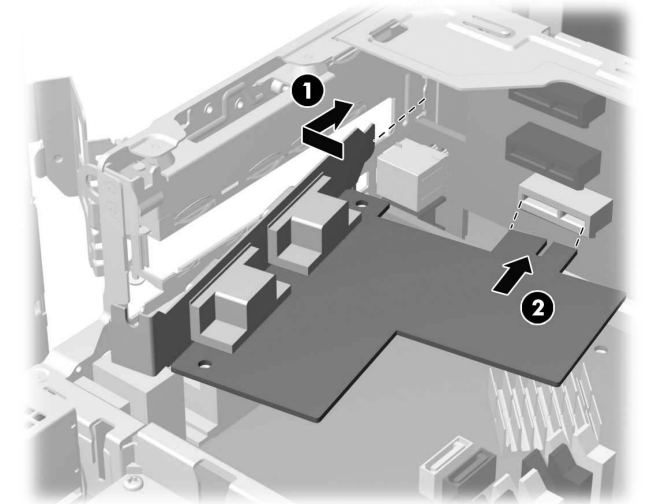


5. Before installing the expansion card, remove the expansion slot cover in the lower slot. The Powered Serial Port expansion card must be installed in the lower slot.

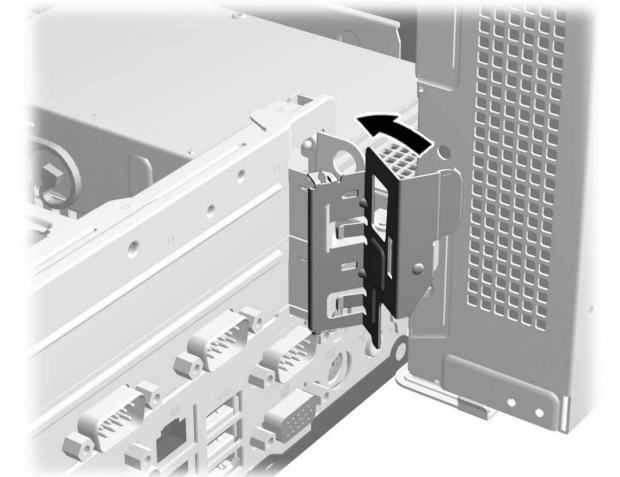


6. Install the expansion card into the bottom slot on the riser card. Align the bracket on the card with the open slot on the rear of the chassis ❶ and press the card straight down into the bottom expansion socket on the riser card ❷.

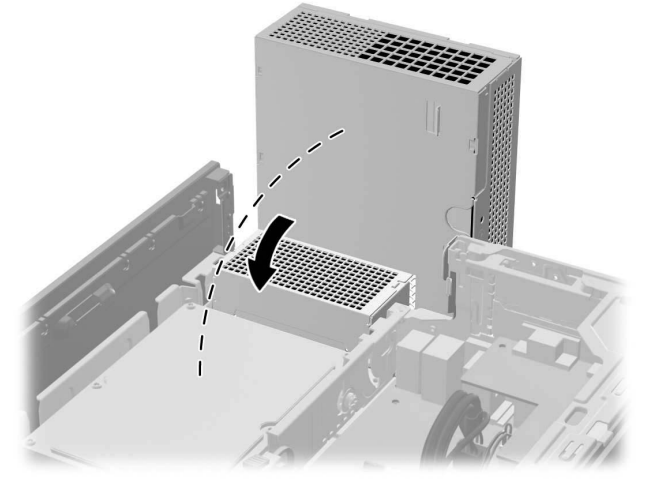
**NOTE:** The Powered Serial Port expansion card must be installed in the bottom socket on the riser card. The bottom socket is designed specifically for that card.



7. Close the expansion card retention latch.



8. Rotate the power supply back down to its normal position.



- Slide the lip on the front end of the access panel under the lip on the front of the chassis ① then press the back end of the access panel onto the unit so that it locks into place ②.



- Reconnect the power cord and any external devices, then turn on the computer.

## Configuring the Powered Serial Ports

The serial ports on the rp5800 computer can be configured as standard (non-powered) serial ports or powered serial ports. Some retail devices use a powered serial port. If the serial port is configured as a powered port, devices that support a powered serial interface do not require an external power source.

The serial ports on the rp5800 computer can be configured using the Computer F10 Setup utility. Under the **Onboard Devices** menu, you are given the option to select the following three settings for each individual serial port. Ports A and B are preinstalled on the computer. Ports C and D are on the expansion card.

- Standard
- 5v on pins 1 and 9
- 12v on pins 1 and 9

**NOTE:** To access the Computer F10 Setup utility, restart the computer and press the **F10** key as soon as the HP logo screen is displayed (before the computer boots to the operating system).

## Federal Communications Commission Notice

This equipment has been tested and found to comply with the limits for a Class B digital device, pursuant to Part 15 of the FCC Rules. These limits are designed to provide reasonable protection against harmful interference in a residential installation. This equipment generates, uses, and can radiate radio frequency energy and, if not installed and used in accordance with the instructions, may cause harmful interference to radio communications. However, there is no guarantee that interference will not occur in a particular installation. If this equipment does cause harmful interference to radio or television reception, which can be determined by turning the equipment off and on, the user is encouraged to try to correct the interference by one or more of the following measures:

- Reorient or relocate the receiving antenna.
- Increase the separation between the equipment and the receiver.
- Connect the equipment into an outlet on a circuit different from that to which the receiver is connected.
- Consult the dealer or an experienced radio or television technician for help.

## Modifications

The FCC requires the user to be notified that any changes or modifications made to this device that are not expressly approved by Hewlett-Packard Company may void the user's authority to operate the equipment.

## Cables

Connections to this device must be made with shielded cables with metallic RFI/EMI connector hoods in order to maintain compliance with FCC Rules and Regulations.

## Declaration of Conformity for Products Marked with the FCC Logo (United States Only)

This device complies with Part 15 of the FCC Rules. Operation is subject to the following two conditions:

- This device may not cause harmful interference.
- This device must accept any interference received, including interference that may cause undesired operation.

For questions regarding the product, contact:

Hewlett Packard Company  
P. O. Box 692000, Mail Stop 530113  
Houston, Texas 77269-2000  
Or, call 1-800-HP-INVENT (1-800 474-6836)

For questions regarding this FCC declaration, contact:

Hewlett Packard Company  
P. O. Box 692000, Mail Stop 510101  
Houston, Texas 77269-2000  
Or, call (281) 514-3333

To identify this product, refer to the Part, Series, or Model number found on the product.

## Canadian Notice

This Class B digital apparatus complies with Canadian ICES-003.

## Avis Canadien

Cet appareil numérique de la classe B est conforme à la norme NMB-003 du Canada.

## European Union Regulatory Notice

Products bearing the CE marking comply with the following EU Directives:

- Low Voltage Directive 2006/95/EC
- EMC Directive 2004/108/EC
- Ecodesign Directive 2009/125/EC, where applicable

CE compliance of this product is valid if powered with the correct CE-marked AC adapter provided by HP.

Compliance with these directives implies conformity to applicable harmonized European standards (European Norms) that are listed in the EU Declaration of Conformity issued by HP for this product or product family and available (in English only) either within the product documentation or at the following web site: [www.hp.eu/certificates](http://www.hp.eu/certificates) (type the product number in the search field).

The compliance is indicated by one of the following conformity markings placed on the product:

	For non-telecommunications products and for EU harmonized telecommunications products, such as Bluetooth® within power class below 10mW.
	For EU non-harmonized telecommunications products (If applicable, a 4-digit notified body number is inserted between CE and !).

Please refer to the regulatory label provided on the product.

The point of contact for regulatory matters is Hewlett-Packard GmbH, Dept./MS: HQ-TRE, Herrenberger Strasse 140, 71034 Boeblingen, GERMANY.

## German Ergonomics Notice

HP products which bear the "GS" approval mark, when forming part of a system comprising HP brand computers, keyboards and monitors that bear the "GS" approval mark, meet the applicable ergonomic requirements. The installation guides included with the products provide configuration information.

## Japanese Notice

この装置は、クラスB情報技術装置です。この装置は、家庭環境で使用することを目的としていますが、この装置がラジオやテレビジョン受信機に近接して使用されると、受信障害を引き起こすことがあります。取扱説明書に従って正しい取り扱いをして下さい。

VCCI-B

## Korean Notice

8급 기기 (가정용 방송통신기기)	이 기기는 가정용(8급)으로 전자파적합등록을 한 기기로서 주로 가정에서 사용하는 것을 목적으로 하며, 모든 지역에서 사용할 수 있습니다.
-----------------------	--

## Online Technical Support

For the online access to technical support information, self-solve tools, online assistance, community forums or IT experts, broad multivendor knowledge base, monitoring and diagnostic tools, go to <http://www.hp.com/support>.

## Localized Versions of this Document

Localized versions of this document are available at <http://www.hp.com> for the following languages:

- Brazilian Portuguese
- Dutch
- English
- French
- German
- Bahasa Indonesian
- Italian
- Japanese
- Korean
- Simplified Chinese
- Spanish
- Traditional Chinese
- Thai