



TOUCHSMART



662941-NN1

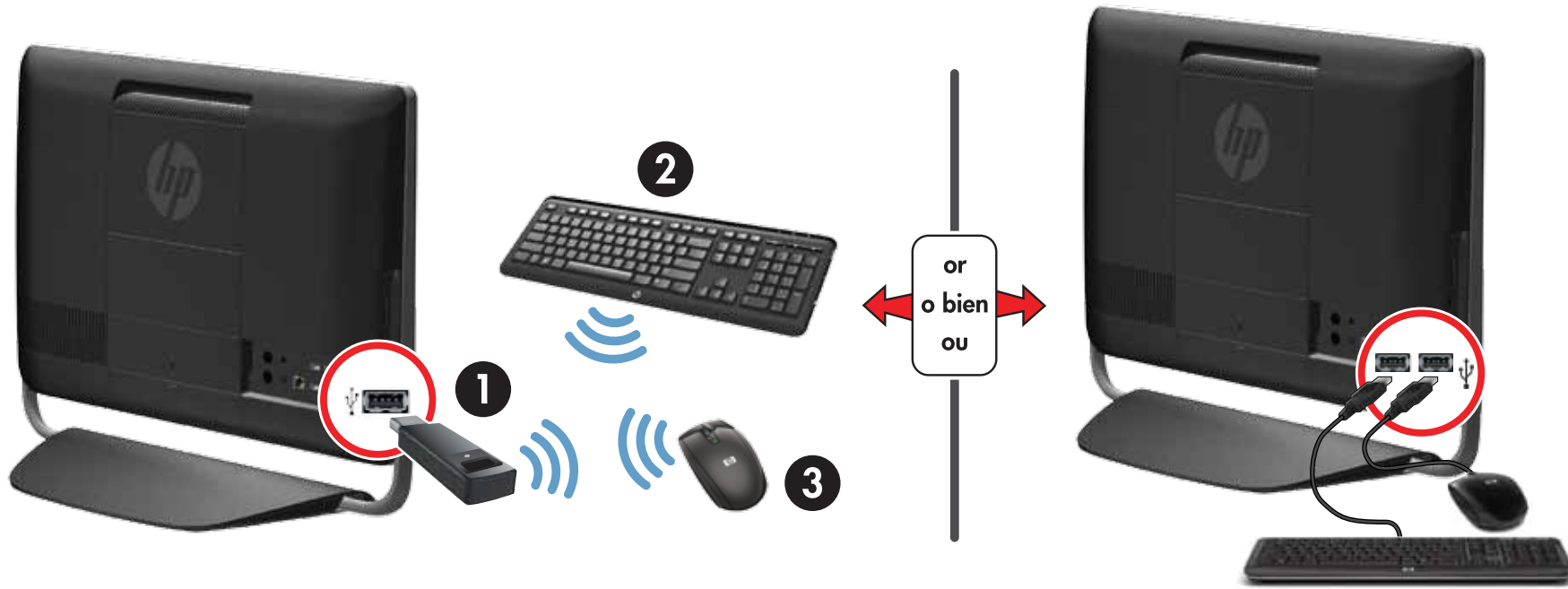


1

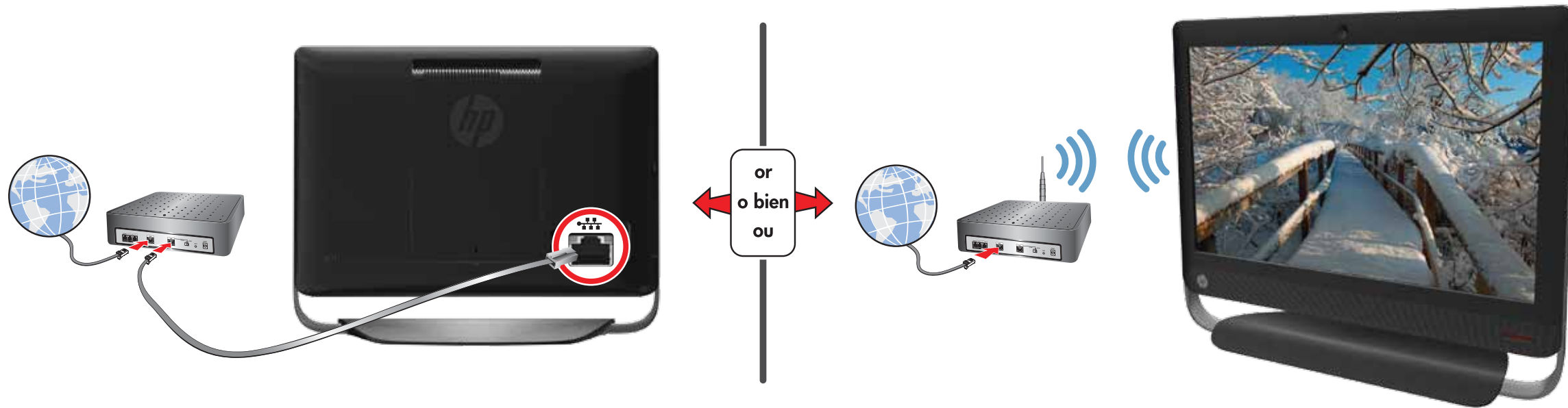


- EN** Grounded connection or connection to surge protector is recommended.
- ES** Se recomienda una conexión a tierra o una conexión a un protector contra sobretensiones.
- BR** Recomenda-se conexão aterrada ou conexão com proteção contra sobretensão.

2

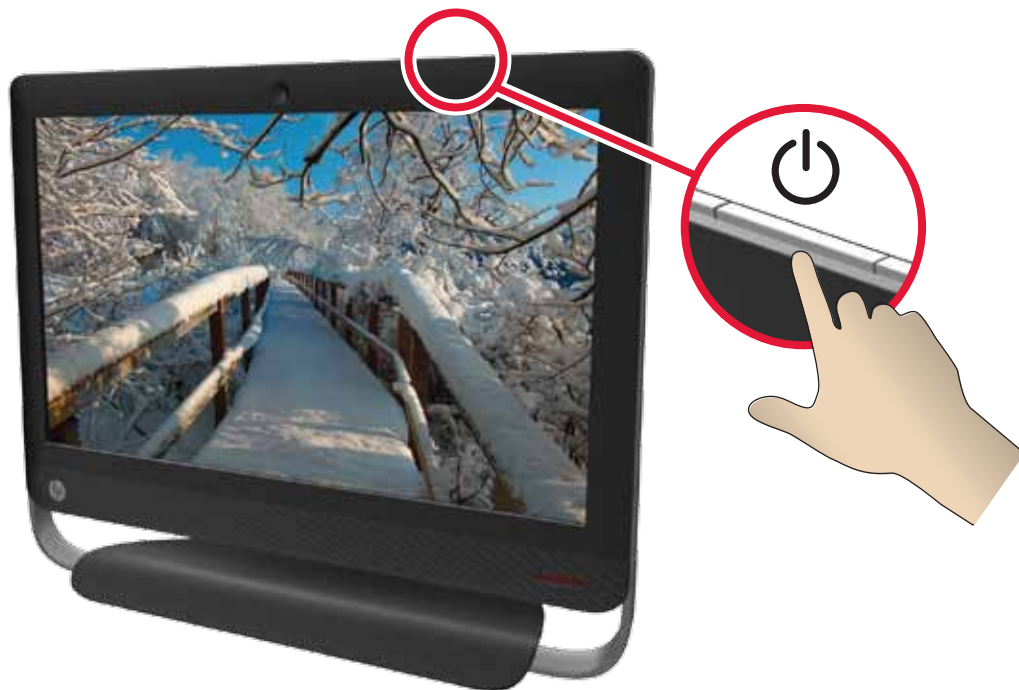


3



- EN** Router and Internet access are required and sold separately.
- ES** Es necesario contar con enrutadores y acceso a Internet, que se adquieren por separado.
- BR** Roteadores e Internet necessários e vendidos separadamente.

4



- EN** Removing the Batteries
- BR** Remoção das baterias.

