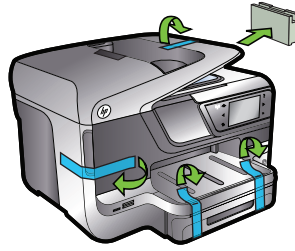




Start

www.hp.com/go/customer-care

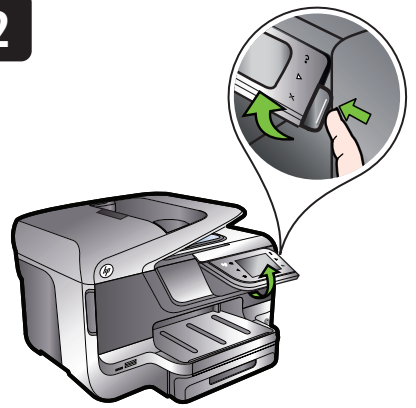
1



Remove tape and packing materials.

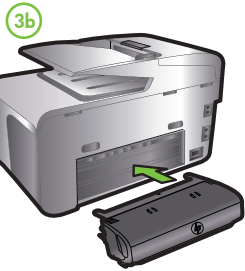
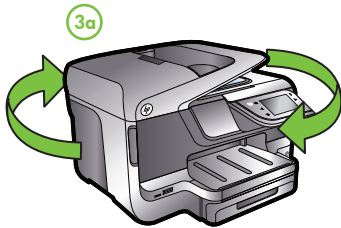
Note: Some of the pictures in this poster might not match your printer.

2



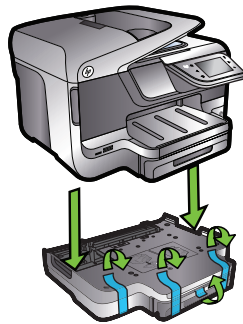
Press and lift up the control panel to the desired height.

3



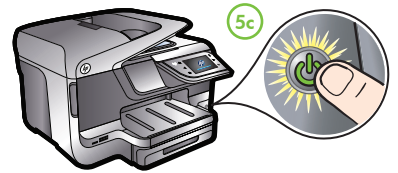
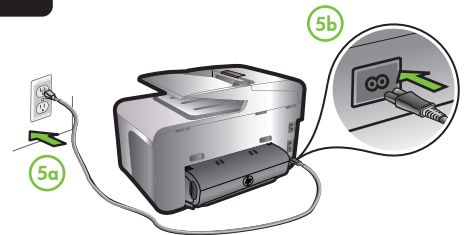
Install the HP automatic two-sided printing accessory (duplexer).

4



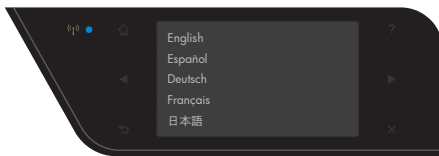
Install the optional tray 2.

5



Connect the power cord and turn on the printer.

6



Follow the instructions on the printer control panel to finish setting up the printer, including:

- 🌐 Setting the language and location
- 📄 Installing the ink cartridges
- 📄 Loading paper
- 🖨️ Installing the printer software

While the printer initializes, you might hear some sounds.

Note: Ink from the cartridges is used in the printing process in a number of different ways, including in the initialization process, which prepares the printer and cartridges for printing, and in printhead servicing, which keeps print nozzles clear and ink flowing smoothly. In addition, some residual ink is left in the cartridge after it is used. For more information see www.hp.com/go/inkusage.

7



Register the printer.

By taking just a few quick minutes to register, you can enjoy quicker service, more efficient support, and printer support alerts. If you did not register your printer while installing the software, you can register later at <http://www.register.hp.com>.



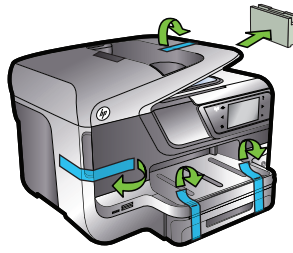
CM749-90041



Démarrage

www.hp.com/go/customer-care

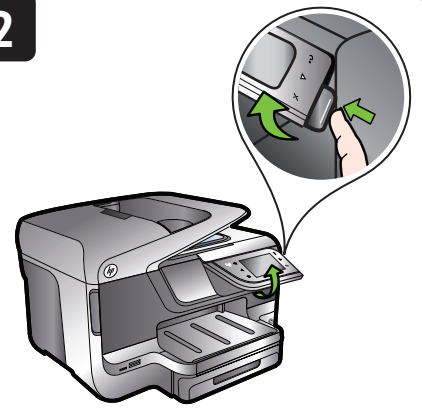
1



Enlevez le ruban et les matériaux d'emballage.

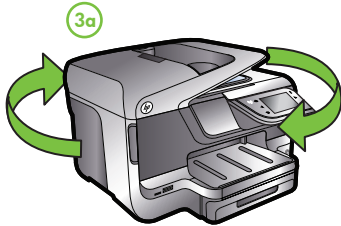
Remarque : Certaines des images de cette carte peuvent ne pas correspondre à votre produit.

2



Appuyez sur le panneau de commande et levez-le à la hauteur souhaitée.

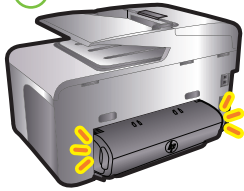
3



3b

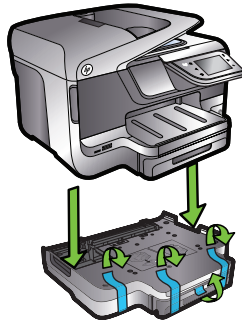


3c



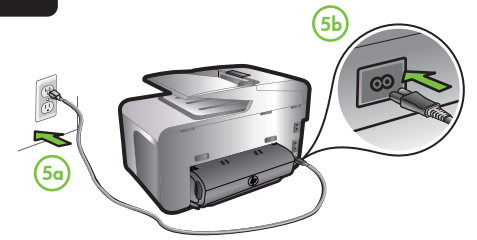
Installez l'accessoire d'impression recto verso automatique HP.

4



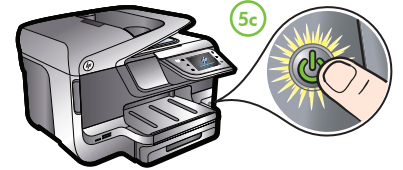
Installez le bac 2 (en option).

5



5a

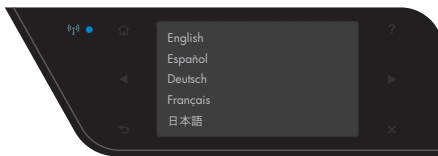
5b



5c

Branchez le cordon d'alimentation et mettez l'imprimante sous tension.

6



Suivez les instructions indiquées sur le panneau de commande de l'imprimante pour terminer la configuration de cette dernière, y compris :

- 🌐 Définition de la langue et de l'emplacement
- 📄 Installation des cartouches d'encre
- 📄 Installation du logiciel d'impression
- 📄 Chargement du papier

Vous pouvez entendre quelques bruits pendant l'initialisation de l'imprimante.

Remarque : l'encre des cartouches est utilisée dans le processus d'impression de différentes manières, notamment lors de la phase d'initialisation, qui prépare l'appareil et les cartouches pour l'impression, et de l'entretien de la tête d'impression, qui maintient les buses dégagées et garantit une libre circulation de l'encre. En outre, une certaine quantité d'encre demeure dans la cartouche après utilisation. Pour plus d'informations, visitez le site www.hp.com/go/inkusage.

7



Enregistrez le produit.

L'enregistrement ne prend que quelques minutes et vous permet de bénéficier d'une assistance technique plus rapide et personnalisée, et de recevoir des alertes concernant les produits. Si vous n'avez pas enregistré l'imprimante lors de l'installation du logiciel, vous pouvez le faire ultérieurement à l'adresse suivante : <http://www.register.hp.com>.

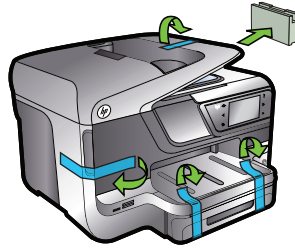


Inicio

Lea esto primero

www.hp.com/go/customer-care

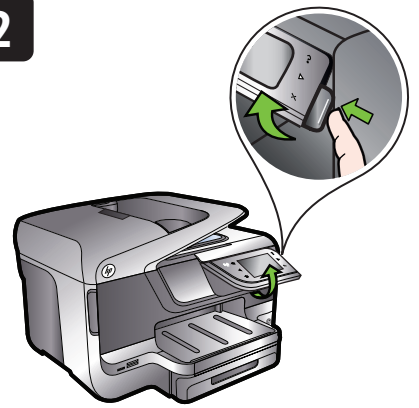
1



Retire la cinta y los materiales de embalaje.

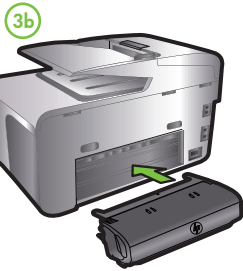
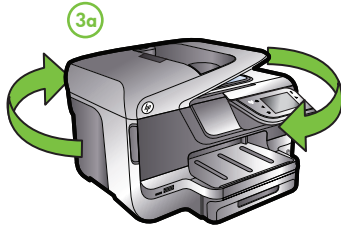
Nota: Es posible que algunas de las imágenes de este afiche no coincidan con su producto.

2



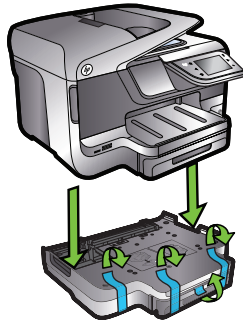
Pulse y levante el panel de control a la altura deseada.

3



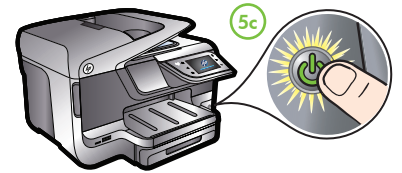
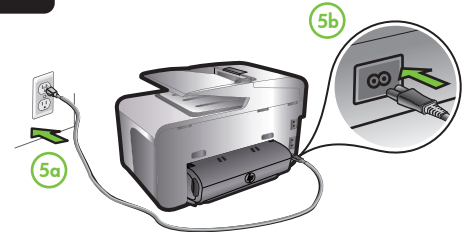
Instale el accesorio (duplexor) de impresión automática a doble cara HP.

4



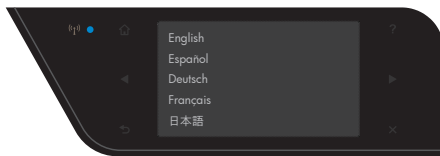
Instale la bandeja opcional 2.

5



Conecte el cable de alimentación y encienda la impresora.

6



Siga las instrucciones en el panel de control de la impresora para finalizar la configuración, tales como:

- Configuración de idioma y ubicación
- Carga del papel
- Instalación del cartucho de tinta
- Instalación del software de impresora

Es posible que escuche algunos ruidos mientras la impresora se inicializa.

Nota: La tinta de los cartuchos se usa en el proceso de impresión de diversas formas, que incluyen el proceso de inicialización, donde se prepara el dispositivo y los cartuchos para la impresión y el servicio de los cabezales de impresión, que mantiene los inyectores de tinta despejados y permite que la tinta fluya sin problemas. Además, queda siempre tinta residual en el cartucho tras su utilización. Para obtener más información, consulte www.hp.com/go/inkusage.

7



Registrar el producto.

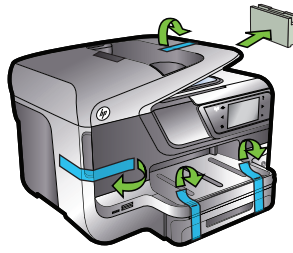
Tómese unos pocos minutos para registrar el producto y así podrá contar con un servicio más rápido, una asistencia y alertas de soporte más eficientes. Si no registró la impresora durante la instalación del software, puede hacerlo posteriormente en <http://www.register.hp.com>.



Iniciar

www.hp.com/go/customer-care

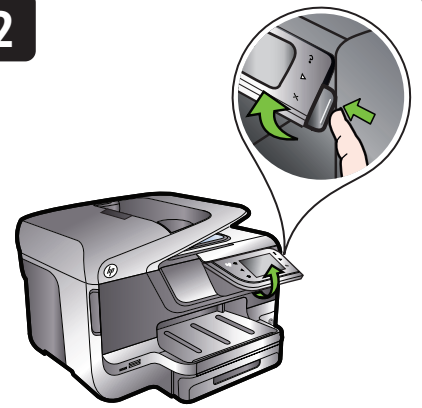
1



Remova as fitas e o material de embalagem.

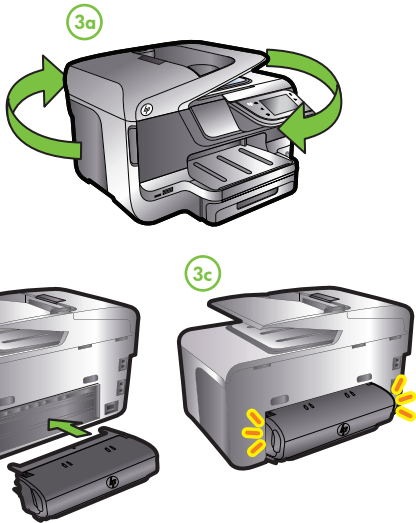
Note: Talvez algumas figuras neste pôster não correspondam ao produto.

2



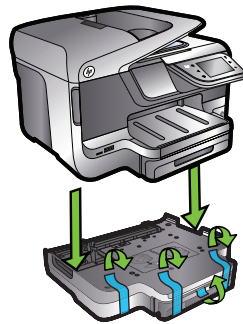
Pressione e erga o painel de controle até a altura desejada.

3



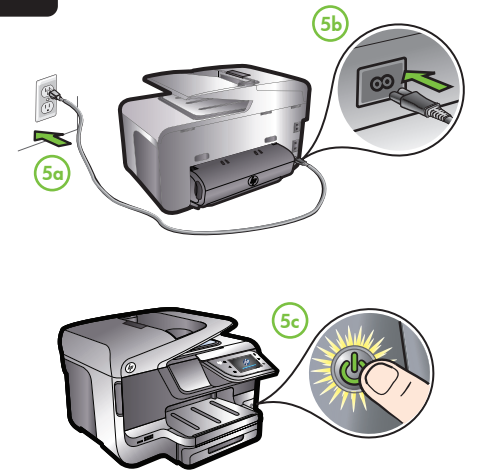
Instale o acessório de impressão dupla-face automático HP (duplexador).

4



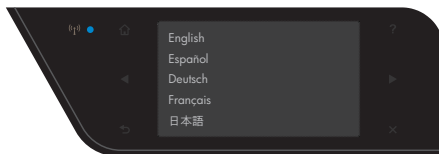
Instale a bandeja 2 (opcional).

5



Conecte o cabo de alimentação e ligue a impressora.

6



Siga as instruções no painel de controle da impressora para concluir sua configuração, incluindo:

- Configuração do idioma e da localização
- Como carregar papel
- Instalando os cartuchos de tinta
- Instalação do driver de impressora

Você pode ouvir alguns sons durante a inicialização da impressora.

Note: a tinta dos cartuchos é usada no processo de impressão de várias maneiras, incluindo o processo de inicialização que prepara o dispositivo e os cartuchos para impressão, e o serviço de manutenção do cabeçote de impressão, que mantém os bicos de impressão limpos e a tinta fluindo normalmente. Além disso, sempre fica um pouco de tinta no cartucho após seu uso. Para obter mais informações, consulte www.hp.com/go/inkusage.

7



Registrar o produto.

Leve apenas alguns minutos com o registro e aproveite serviços mais rápidos, suporte mais eficiente e alertas de suporte de produtos. Se você não registrou sua impressora durante a instalação do software, é possível registrá-la posteriormente no endereço <http://www.register.hp.com>.