



Wall-Mounting your HP TouchSmart

User Guide

The only warranties for Hewlett-Packard products and services are set forth in the express statements accompanying such products and services. Nothing herein should be construed as constituting an additional warranty. HP shall not be liable for technical or editorial errors or omissions contained herein.

HP assumes no responsibility for the use or reliability of its software on equipment that is not furnished by HP.

This document contains proprietary information that is protected by copyright. No part of this document may be photocopied, reproduced, or translated to another language without the prior written consent of HP.

Hewlett-Packard Company

P.O. Box 4010

Cupertino, CA 95015-4010

USA

Copyright ©2011 Hewlett-Packard Development Company, L.P.

This product incorporates copyright protection technology that is protected by U.S. patents and other intellectual property rights. Use of this copyright protection must be authorized by Macrovision, and is intended for home and other limited viewing uses only unless otherwise authorized by Macrovision. Reverse engineering or disassembly is prohibited.

Microsoft, the Windows logo, and Windows are trademarks or registered trademarks of the Microsoft group of companies in the United States and/or other countries/regions.

Wi-Fi CERTIFIED 802.11n WLAN (wireless local area network) are draft specification and not final. If the final specifications differ from the draft specifications, it may affect the ability of this device to communicate with other 802.11n WLAN devices.

HP supports lawful use of technology and does not endorse or encourage the use of our products for purposes other than those permitted by copyright law. The information in this document is subject to change without notice.

Table of contents

1	Preparing your HP TouchSmart PC for wall-mounting	1
	What you need	1
	Safety information	1
	Before removing the stand	2
	Removing the computer stand	2
2	Reinstalling the stand on your HP TouchSmart PC	8
	What you need	8
	Safety information	8
	Removing the wall-mounting hardware	9
	Replacing the computer stand	9

1 Preparing your HP TouchSmart PC for wall-mounting

This document provides instructions for computer wall-mounting preparation. The VESA mounting bracket is attached to the back of the HP TouchSmart PC. This bracket attaches to a wall-mounting device (sold separately). The computer stand will need to be removed before wall-mounting the computer.

Should you decide to switch your computer back from a wall-mounted unit to desktop unit, instructions are also included for reinstalling the stand on the computer. It is very important that you follow all the steps to reinstall the computer stand.

What you need

- A Torx screwdriver (magnetic-tipped recommended)
- A stable flat surface covered with a soft, clean cloth (such as a clean, large towel) to protect the computer when you place it face down.
- Another person (it might require two people to lift and move the computer)
- Antistatic wrist strap and a conductive foam pad to stand on while working on the computer (recommended)
- Wall-mounting device (sold separately) with the following specifications:
 - VESA standard 100 mm x 100 mm (3.9 in x 3.9 in) hole pattern
 - Designed for flat-panel displays ranging in size from 508 mm to 582 mm (20 inches to 22.9 inches) diagonal, and weighing up to 22.7 kg (50 lb)

Safety information

This product has not been evaluated for connection to an "IT" power system (an AC distribution system with no direct connection to the earth, according to IEC 60950).

-
- ⚠ **WARNING!** Please read "Additional Safety Information" in the *Limited Warranty and Support Guide* before installing and connecting your system to the electrical power system.
 - ⚠ **WARNING!** The computer is heavy. Take proper precautions when lifting or moving your computer.
 - ⚠ **WARNING!** Always disconnect the HP TouchSmart PC from the power source before removing the computer stand. Failure to do so before you perform any procedures can result in personal injury or equipment damage.
 - ⚠ **WARNING!** Avoid touching sharp edges inside the computer.
 - ⚠ **WARNING!** It is recommended that you use only UL-listed wall-mounting devices.
-

Before removing the stand

To avoid injury and equipment damage when opening the HP TouchSmart PC, always complete the following steps in order:

1. Remove any media and external devices (such as any CD, DVD, memory cards, USB devices, or external hard disk drives) from the HP TouchSmart PC.

⚠ CAUTION: Static electricity can damage the electronic components of the HP TouchSmart PC or optional equipment. Ensure that you are discharged of static electricity by briefly touching a grounded metal object.

2. Tap the Windows **Start** button and then tap **Shut Down**.

⚠ WARNING! To reduce the risk of personal injury from electrical shock or hot surfaces, disconnect the power cord from the wall outlet, and allow the internal system components to cool before touching them.

3. After the system has completely shut down, disconnect the power adapter from the back of the HP TouchSmart PC.
4. Disconnect all other attached cables from the back and side of the HP TouchSmart PC.

Removing the computer stand

After completing the preceding steps, remove the computer stand.

1. Place the computer facedown on a stable flat surface that is covered with a soft cloth.



2. To remove the VESA cover, insert your finger into the slot and pry it off the computer.



3. Remove the three screws that secure the back cover to the computer.



4. Remove the back cover from the computer.



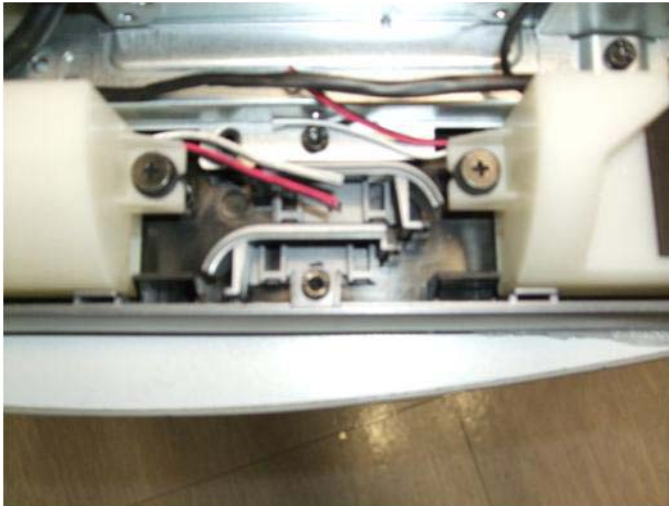
5. Remove the eight screws that attach the stand to the computer. There are four screws each at the bottom left and right of the computer. Save the screws.



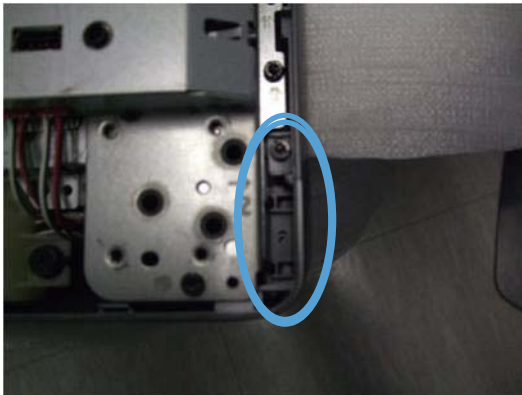
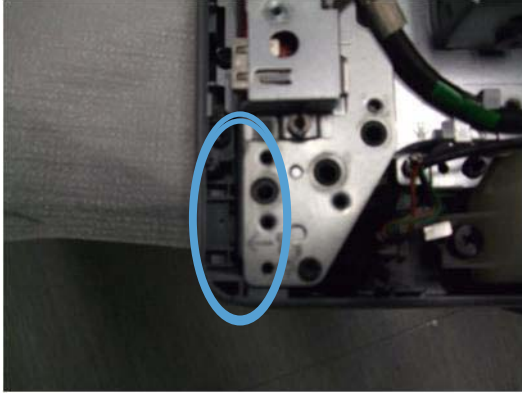
6. Remove the stand from the computer.



7. Remove the left and right ring covers from the lower back of the computer.




8. Snap the rings into place on the lower corners of the computer.



9. Replace the back cover on the computer and install the three screws securing the cover to the computer.



 **NOTE:** Save the computer stand and the eight screws, so that you can convert your HP TouchSmart PC back to a desktop unit in the future. To reinstall the stand, follow all the steps in [Reinstalling the stand on your HP TouchSmart PC on page 8](#).

10. Your computer is now ready for the wall-mounting device to be attached.



11. Attach the wall-mounting hardware (purchased separately) to the VESA adapter plate, according to the manufacturer's instructions, using the 100 mm x 100 mm screw holes.

⚠ CAUTION: The computer is heavy and may require two people to mount it to the wall.

2 Reinstalling the stand on your HP TouchSmart PC

You may decide to convert your HP TouchSmart PC from a wall-mounted unit back to a desktop unit. You will need to install the computer stand back on to your HP TouchSmart PC.

What you need

- A Torx screwdriver (magnetic-tipped recommended)
- A stable flat surface covered with a soft, clean cloth (such as a large towel) to protect the computer when you place it face down.
- Another person (it might require two people to lift and move the computer)
- Antistatic wrist strap and conductive foam pad to stand on while working on the computer (recommended)

Safety information

This product has not been evaluated for connection to an “IT” power system (an AC distribution system with no direct connection to the earth, according to IEC 60950).

-
- ⚠ **WARNING!** Please read “Additional Safety Information” in the *Limited Warranty and Support Guide* before installing and connecting your system to the electrical power system.
 - ⚠ **WARNING!** The computer is heavy. Take proper precautions when lifting or moving your computer.
 - ⚠ **WARNING!** Always disconnect the HP TouchSmart PC from the power source before removing the computer stand. Failure to do so before you perform any procedures can result in personal injury or equipment damage.
 - ⚠ **WARNING!** Avoid touching sharp edges inside the computer.
-

Removing the wall-mounting hardware

Prepare your HP TouchSmart PC for removal from the wall-mounting device.

1. Remove any media and external devices (such as any CD, DVD, memory cards, USB devices, or external hard disk drives) from the HP TouchSmart PC.

⚠ CAUTION: Static electricity can damage the electronic components of the HP TouchSmart PC or optional equipment. Ensure that you are discharged of static electricity by briefly touching a grounded metal object.

2. Tap the Windows **Start** button and then tap **Shut Down**.

⚠ WARNING! To reduce the risk of personal injury from electrical shock or hot surfaces, disconnect the power cord from the wall outlet, and allow the internal system components to cool before touching them.

3. After the system has completely shut down, disconnect the power adapter from the back of the HP TouchSmart PC.
4. Disconnect all other attached cables from the back and side of the HP TouchSmart PC.
5. Carefully remove the HP TouchSmart PC from the wall and place facedown on a stable flat surface covered with a clean soft cloth.

⚠ CAUTION: The computer is heavy and may require two people to remove it from the wall.

6. Following the manufacturer's instructions, remove the wall-mounting hardware from the back of the HP TouchSmart PC.

Replacing the computer stand

Perform the following steps to replace the computer stand on your HP TouchSmart PC.

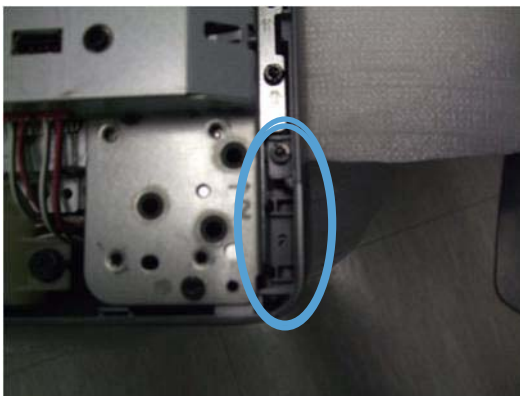
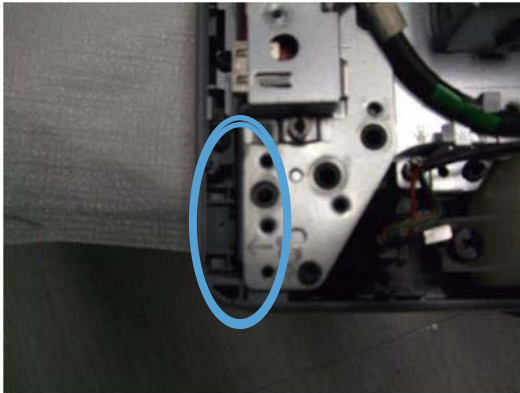
1. Remove the three screws that secure the back cover to the computer.



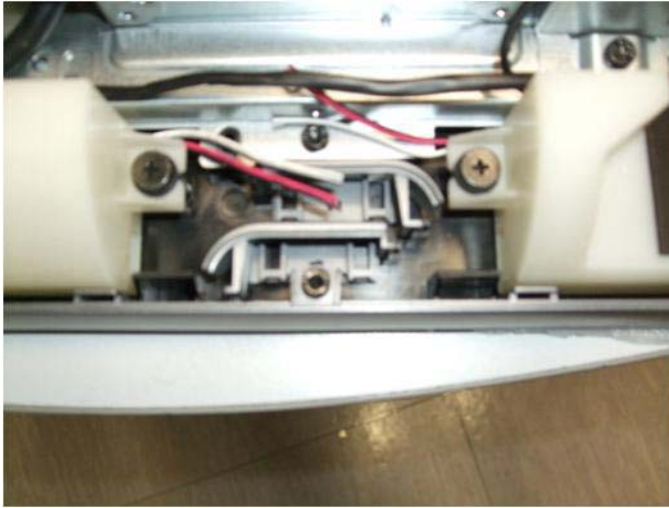
2. Remove the back cover from the computer.



3. Remove the ring covers from the left and right side of the computer.



4. Place the ring covers back into their storage location at the back of the computer.



5. Place the stand back on the computer, aligning the screw holes on the stand with the screw holes on the computer.



6. Install the four screws on both the left and right side to secure the stand to the computer.

7. Place the back cover on the computer and install the three screws that secure the back cover to the computer.



8. Replace the VESA cover on the back of the computer.



9. Place the HP TouchSmart PC in an upright position.
10. Connect the power cord.
11. Connect any cables that were previously disconnected.