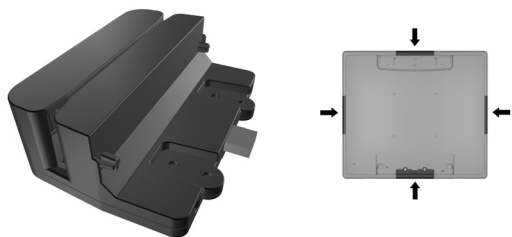




HP Retail Integrated Dual-Head MSR Installation Instructions



Copyright © 2012 Hewlett-Packard Development Company, L.P. The information contained herein is subject to change without notice. Printed in



691054-002

Installing Drivers for the MSR

The drivers for the MSR are available on the CD included with this product. You can also download the latest drivers from www.hp.com.

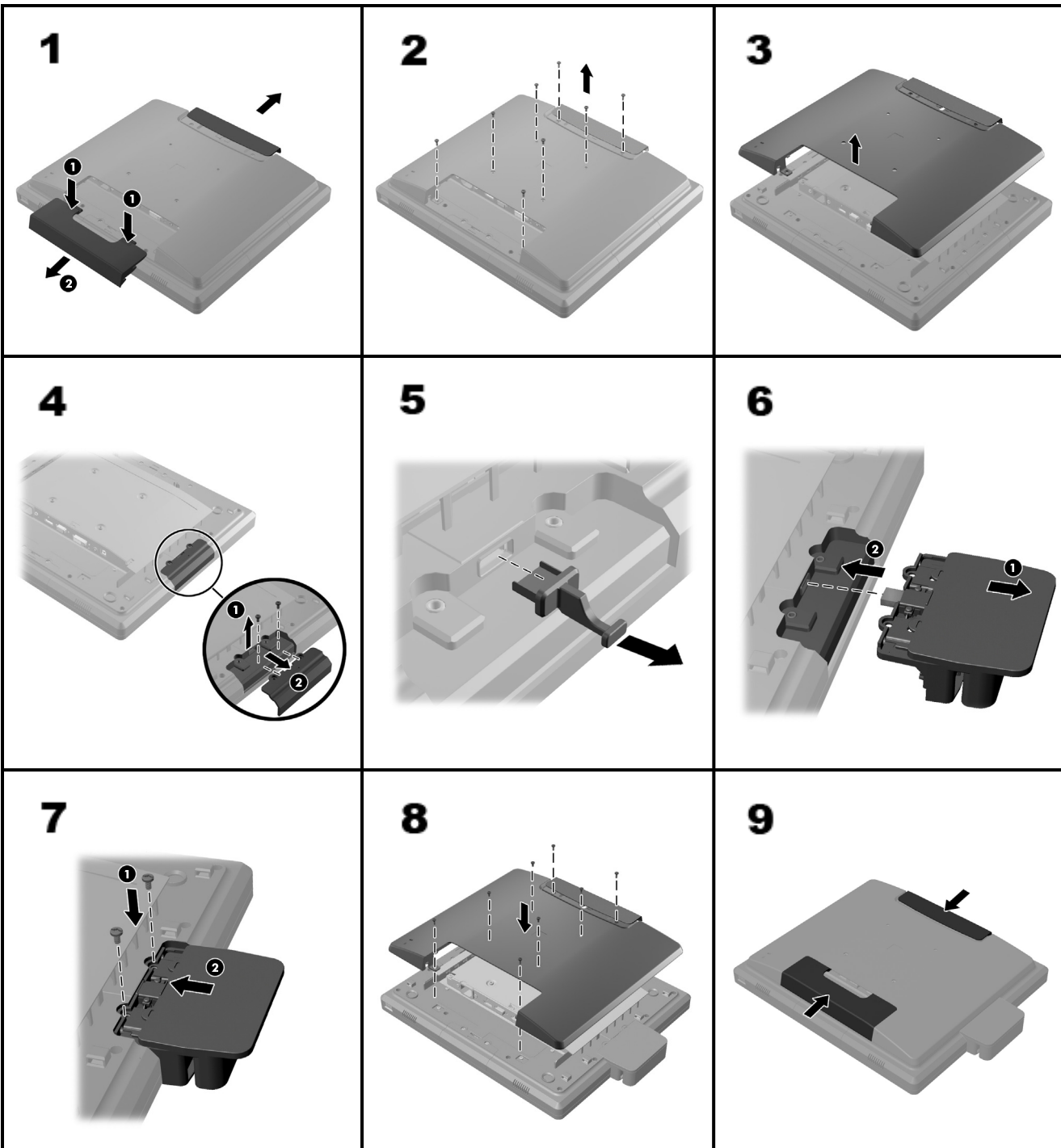
Configuring the MSR

To configure the MSR, insert the CD included with this product and refer to the *HP Point of Sale Configuration Guide* (available in English only).

NOTE: Refer to the *HP L6015tm and L6017tm Retail Touch Monitors User Guide* at www.hp.com for detailed instructions on installing USB modules.

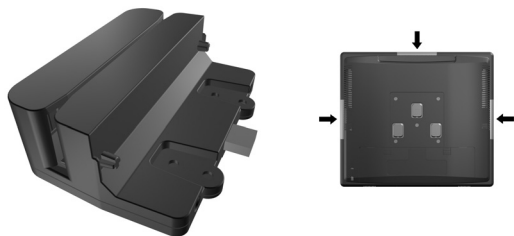
CAUTION: This accessory is for use only with compatible UL Listed host products that have been evaluated for the operating altitude up to 3048m/10,000 feet. Use only with Listed ITE.

HP L6015tm and L6017tm Retail Touch Monitors





HP Retail Integrated Dual-Head MSR Installation Instructions



Copyright © 2012 Hewlett-Packard Development Company, L.P. The information contained herein is subject to change without notice. Printed in



691054-002

Installing Drivers for the MSR

The drivers for the MSR are pre-loaded on the HP RP7 Retail System. You can also download the latest drivers from www.hp.com.

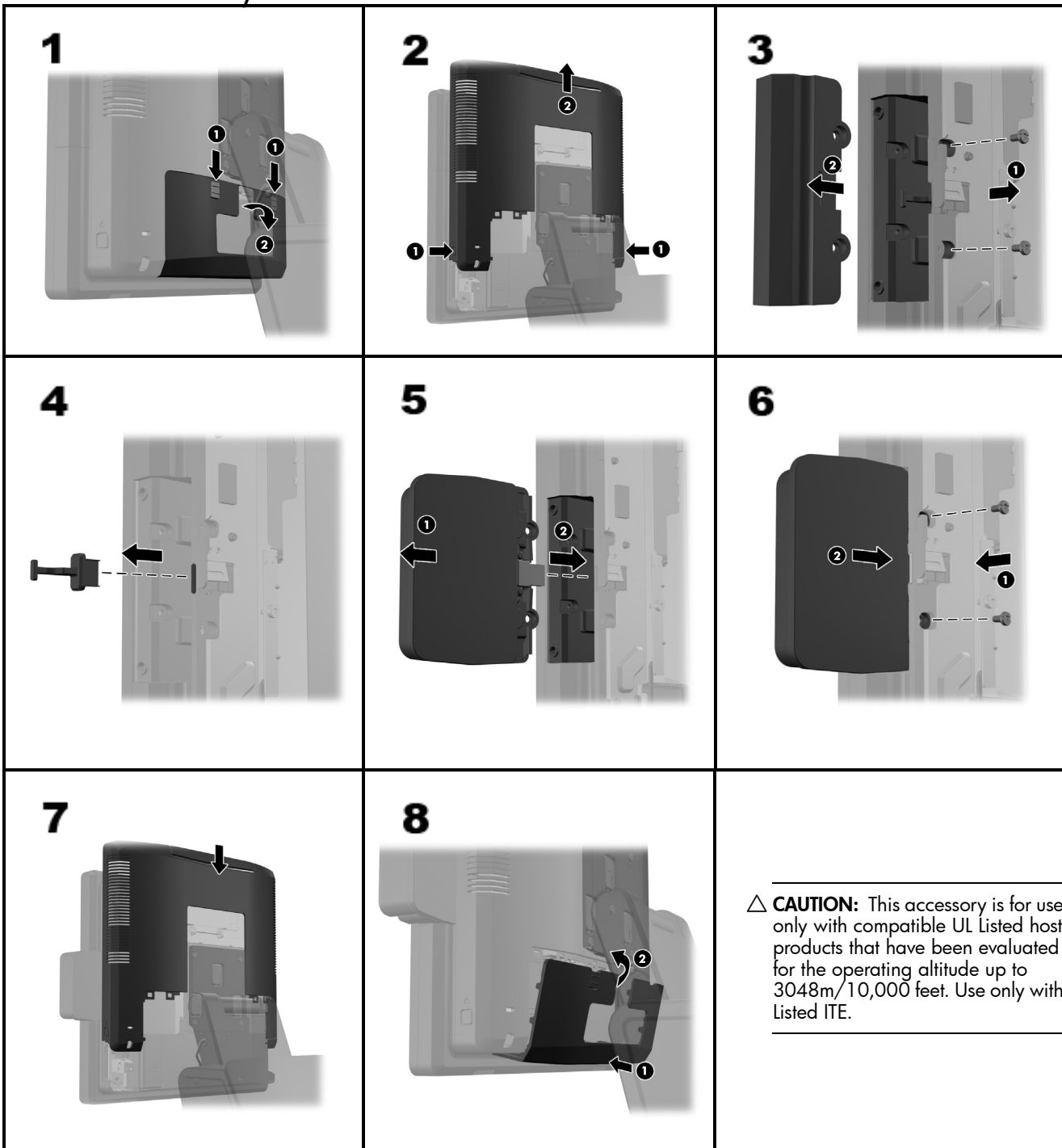
Configuring the MSR

To configure the MSR, refer to the *HP Point of Sale Configuration Guide* (available in English only). The guide is available on the HP factory image of the RP7 system's hard drive and at www.hp.com. To access the guide on the factory image:

- In Windows Embedded POSReady 2009, select **Start > All Programs > HP Point of Sale Information**.
- In Windows 7 or Windows Embedded POSReady 7, select **Start > HP Point of Sale Information**.

NOTE: Refer to the *HP RP7 Retail System Model 7800 Hardware Reference Guide* at www.hp.com for detailed instructions on installing USB modules.

HP RP7 Retail System



△ **CAUTION:** This accessory is for use only with compatible UL Listed host products that have been evaluated for the operating altitude up to 3048m/10,000 feet. Use only with Listed ITE.