

Illustrated Parts & Service Map

HP Omni Pro 110 All-in-One PC



© 2011, 2012 Hewlett-Packard Development Company, L.P. The information contained herein is subject to change without notice. HP shall not be liable for technical or editorial errors or omissions contained herein. Intel, Pentium, Intel Inside, and the Intel logo are trademarks or registered trademarks of the Intel Corporation and its subsidiaries in the U. S. and other countries.

Document Number 654195-002. 2nd Edition October 2012.

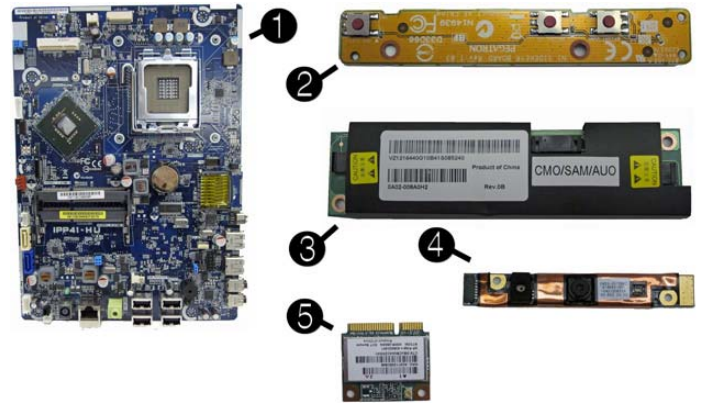


Key Specifications

| | |
|------------------------------|--|
| Processor Type | Intel® Celeron Dual-Core, Intel Pentium Dual-Core, Intel Core™2 Duo |
| RAM Type | PC3-10600 DDR3 1333-MHz non-ECC SDRAM |
| Maximum RAM Supported | 4 GB |
| Display | <ul style="list-style-type: none"> 20-inch diagonal Resolution: 1600 x 900 Contrast Ratio: 1000:1 Image brightness: 250 nits Typical response time: 5ms |
| Graphics Adapter | Integrated Intel Graphics Media Accelerator X4500 |
| Chipset | Intel G41 Express chipset |
| Expansion | Bays: External: (1) 5.25- Slim Tray drive bay Internal: (1) 3.5-inch drive bay Slots: (1) Mini Socket Slot (Occupied) |
| I/O Interfaces | (6) USB 2.0 ports: (2) left side, (4) rear; (1) RJ-45, (1) left side audio headphone, (1) left side microphone, (1) rear line out |
| Operating Systems | <ul style="list-style-type: none"> Windows 7 Professional 32 & 64 Windows 7 Home Basic 64 Windows 7 Starter Edition 32 RedFlag Linux FreeDOS |

Spare Parts

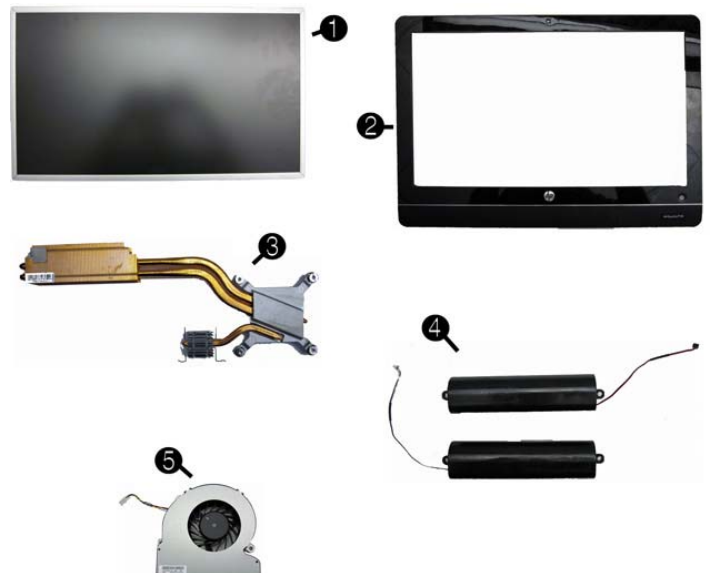
| Mass Storage Devices (not illustrated) | |
|---|------------|
| 8X DVD±RW SuperMulti DL Drive with LightScribe | 597927-001 |
| Optical drive bracket (mounts on back of optical drive) | 651600-001 |
| Optical drive bezel | 651599-001 |
| 1 TB hard drive | 621418-001 |
| 750 GB hard drive | 632938-001 |
| 500 GB hard drive | 621421-001 |
| 320 GB hard drive | 621420-001 |
| 250 GB hard drive | 621419-001 |



Standard and Optional Boards

| System boards with thermal grease, alcohol pad, and CPU socket cover | | |
|--|---|------------|
| 1 | System board | 648965-001 |
| 2 | Power button board | 651585-001 |
| 3 | Inverter board | 651601-001 |
| 4 | Webcam module | 651586-001 |
| 5 | WLAN module (802.11b/g/n) (1x1 mini card) | 634906-001 |
| Memory modules (PC3-10600) | | |
| * | 2 GB | 651609-001 |
| * | 1 GB | 651608-001 |
| Intel Core2 Duo processors with thermal material: | | |
| | E8500, 6-MB cache, 3.16 GHz | 466170-001 |
| | E8400, 6-MB cache, 3.00 GHz | 509554-001 |
| | E7600, 3-MB cache, 3.06 GHz | 573954-001 |
| | E7500, 3-MB cache, 2.93 GHz | 586745-001 |
| Intel Pentium processors with thermal material: | | |
| | E6800, 2-MB cache, 3.20 GHz, 1066-MHz FSB | 631758-001 |
| | E6700, 2-MB cache, 3.20 GHz, 1066-MHz FSB | 617840-001 |
| | E5800, 2-MB cache, 3.30 GHz, 800-MHz FSB | 646376-001 |
| | E5700, 2-MB cache, 3.00 GHz, 800-MHz FSB | 631759-001 |
| | E5500, 2-MB cache, 2.80 GHz, 800-MHz FSB | 613035-001 |
| Intel Celeron processor with thermal material: | | |
| | E3500, 1-MB cache, 2.70 GHz, 800-MHz FSB | 633219-001 |

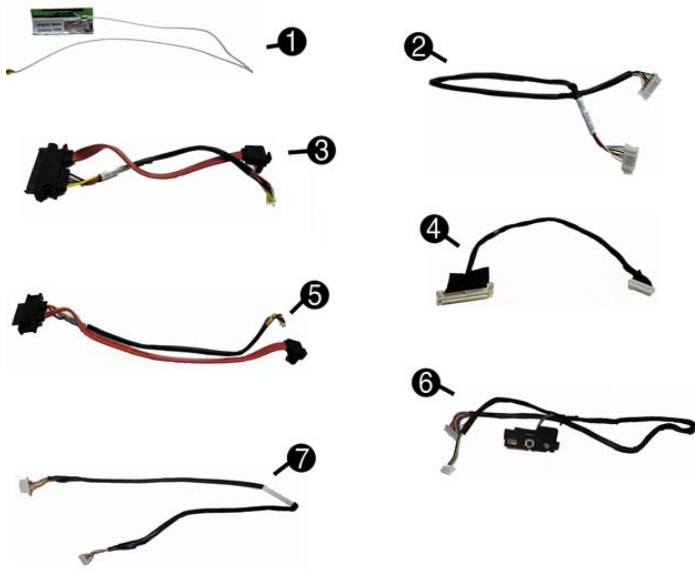
* Not shown



Miscellaneous Parts

| | | |
|---|--|------------|
| 1 | Display panel, 20-inch, non-glare | 646794-001 |
| 2 | Display bezel | 704214-001 |
| 3 | Heat sink (thermal module) | 651607-001 |
| 4 | Speaker, right | 651597-001 |
| 4 | Speaker, left | 651598-001 |
| 5 | Fan | 651606-001 |
| * | Thermal pad, DIMM, 20mm x 50mm x 2.5mm (mount under PCA) | 651595-001 |
| * | Thermal pad, VRM, 15mm x 40mm x 4mm (mount under PCA) | 651596-001 |
| * | AC adapter, 150W, external | 651587-001 |
| * | Mouse, USB, optical, Portia | 621416-001 |

*Not shown

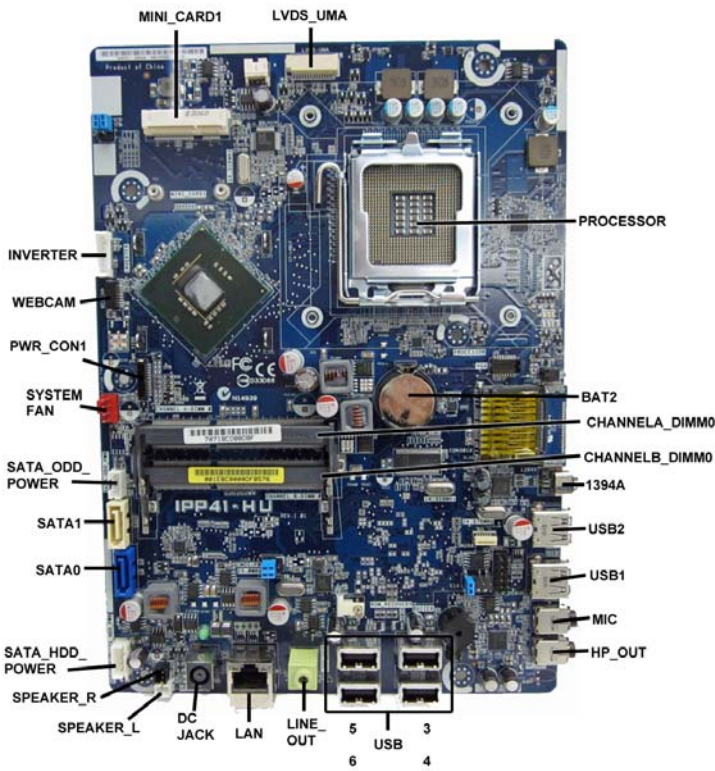


Cables

| | | |
|---|------------------------|------------|
| 1 | WLAN antenna cable | 651594-001 |
| 2 | Inverter cable | 651588-001 |
| 3 | Optical drive cable | 651590-001 |
| 4 | LVDS cable | 651589-001 |
| 5 | Hard drive cable | 651592-001 |
| 6 | Power button/LED cable | 651593-001 |
| 7 | Webcam cable | 651591-001 |

*Not shown

System Board



System Board Connectors and Jumpers (component location may vary)

| | | | |
|----------------|----------------------------|----------------|-------------------------------|
| MINI_CARD1 | Mini card connector (WLAN) | LAN | Network connector |
| LVDS_UMA | Display connector | DC JACK | AC adapter connector |
| PROCESSOR | CPU | SPEAKER_L | Left speaker connector |
| BAT2 | RTC battery socket | SPEAKER_R | Right speaker connector |
| CHANNELA_DIMM0 | Memory socket 1 | SATA_HDD POWER | Hard drive power connector |
| CHANNELB_DIMM0 | Memory socket 2 | SATA0 | Hard drive connector |
| 1394A | 1394 port | SATA1 | Optical drive connector |
| USB2 | USB connector | SATA_ODD POWER | Optical drive power connector |
| USB1 | USB connector | SYSTEM FAN | System fan connector |
| MIC | Microphone connector | PWR_CON1 | Power cable connector |
| HP_OUT | Headphone jack | WEBCAM | Webcam connector |
| USB3-6 | USB connectors | INVERTER | Inverter board connector |
| LINE_OUT | Headphone connector | | |

Computer Setup.

Computer Setup Menu

| Heading | Option / Description | |
|----------------------------|--|---|
| Main | System Time | Allows you to set system time. |
| | System Date | Allows you to set system date. |
| | System IDs | (view only) Lists product name, serial number UUID, SKU number, family name, feature byte, build ID. |
| | Language | Allows you to select the language. |
| | Floppy Diskette A | Specifies capacity and physical size, if installed. |
| | 1st Drive 2nd Drive | Allow you to: enable/disable port configuration, view capacity (HDD only), view transfer mode. Also allows you to run HDD self-test for selected channel: SMART status check, SMART short self test, SMART extended self test. |
| | System Information | Allows you to view installed memory, memory banks 1-2, BIOS revision, core version. |
| Advanced | CPU Type | View only. |
| | CPU Speed | View only. |
| | Cache RAM | View only. |
| | Supervisor Password | Allows you to view the supervisor password. |
| | User Password | Allows you to view the user password. |
| | Onboard LAN | Disable/enable onboard LAN controller. |
| | Onboard WLAN | Disable/enable onboard WLAN controller. |
| | Onboard LAN Boot ROM | Disable/enable the boot ROM of the onboard LAN chip. |
| | Onboard 1394 | Allows you to enable/disable all 1394 ports. |
| | Primary Video Adapter | Allows you to select boot display device when more than 2 video options are offered by system: Integrated (onboard), PCIe. |
| | SATA Controller | Allows you to disable/enable the SATA controller. |
| | SATA Controller Mode | If SATA controller is enabled, allows you to set the mode to: IDE, AHCI. |
| | Onboard Audio | Auto/disable/enable. |
| | USB Ports | Allows you to individually enable/disable available USB ports. |
| Change Supervisor Password | Allows you to change the supervisor password. | |
| Power | After AC Power Failure | Allows you to select system restart behavior after power loss: Stay off, Power on, Auto. |
| | XD (Execute Disable) | Disable/enable XD bit. |
| | Virtualization Technology | Disable/enable. |
| | WOL from S5 | Allows you to enable/disable Limited (normal shutdown) WOL from S5 support. |
| Boot | Boot-time Diagnostic Screen | Disable/enable POST diagnostic messages display. |
| | ESC: Boot Menu | Enables/disables the ability to press the Esc key to access the boot menu during boot. |
| | F9: Diagnostics | Enables/disables the ability to press the F9 key to access the Diagnostics menu during boot. |
| | F10: Setup | Enables/disables the ability to press the F10 key to access the Setup menu during boot. |
| | F11: Recovery | Enables/disables the ability to press the F11 key to access the recovery menu during boot. |
| | F12: Boot from LAN | Enables/disables the ability to press the F12 key to boot from LAN. |
| | Boot Device Priority: 1st Boot Device, 2nd Boot Device, 3rd Boot Device, 4th Boot Device | Allows you to specify which device groups will boot first, second, third, and fourth or to disable any of the four: Floppy group, CD-ROM group, Hard drive group, Network boot group. MS-DOS drive lettering assignments maybe apply after a non-MS-DOS operating system has started. |
| | Floppy Group Boot Priority | Specifies boot device priority within removable devices. |
| | CD-ROM Boot Priority | Specifies boot device priority within CD/DVD drives. |
| | Hard Drive Boot Priority | Specifies boot device priority within hard drives. |
| | Network Group Boot Priority | Specifies boot device priority within bootable network devices. |
| | Exit | Exit Saving Changes |
| Exit Discarding Changes | | Press Enter to exit discarding changes. |
| Load Setup Defaults | | Press Enter to load setup defaults. |
| Discard Changes | | Press Enter to discard changes. |
| Save Changes | | Press Enter to save changes. |