



HP Slate⁷ Plus Tablet

Maintenance and Service Guide

IMPORTANT! This document is intended for
HP authorized service providers only.

© Copyright 2013 Hewlett-Packard
Development Company, L.P.

SD Logo is a trademark of its proprietor.

The information contained herein is subject to change without notice. The only warranties for HP products and services are set forth in the express warranty statements accompanying such products and services. Nothing herein should be construed as constituting an additional warranty. HP shall not be liable for technical or editorial errors or omissions contained herein.

First Edition: October 2013

Document Part Number: 743471-001

Product notice

This guide describes features that are common to most models. Some features may not be available on your tablet.

Software terms

By installing, copying, downloading, or otherwise using any software product preinstalled on this tablet, you agree to be bound by the terms of the HP End User License Agreement (EULA). If you do not accept these license terms, your sole remedy is to return the entire unused product (hardware and software) within 14 days for a refund subject to the refund policy of your place of purchase.

For any further information or to request a full refund of the tablet, please contact your local point of sale (the seller).

Safety warning notice

⚠ WARNING! To reduce the possibility of heat-related injuries or of overheating the device, do not place the device directly on your lap or obstruct the device air vents. Use the device only on a hard, flat surface. Do not allow another hard surface, such as an adjoining optional printer, or a soft surface, such as pillows or rugs or clothing, to block airflow. Also, do not allow the AC adapter to contact the skin or a soft surface, such as pillows or rugs or clothing, during operation. The device and the AC adapter comply with the user-accessible surface temperature limits defined by the International Standard for Safety of Information Technology Equipment (IEC 60950).

Table of contents

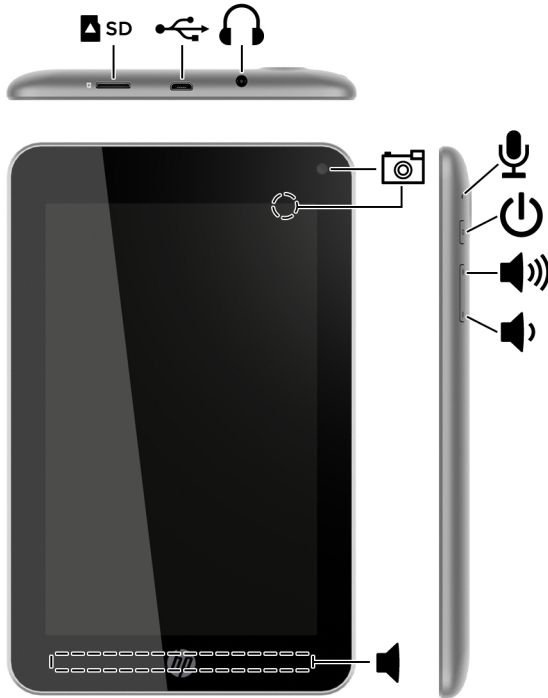
1 Product description	1
2 External component identification	2
3 Illustrated parts catalog	3
Locating the serial number, product number, and model number	3
Tablet major components	4
Miscellaneous parts	5
Sequential part number listing	6
4 Removal and replacement preliminary requirements	7
Tools required	7
Service considerations	7
Plastic parts	7
Cables and connectors	8
Grounding guidelines	9
Electrostatic discharge damage	9
Packaging and transporting guidelines	10
Workstation guidelines	10
Removal and replacement procedures	12
Component replacement procedures	12
Tablet cover	12
Battery	15
Front-facing webcam	16
Rear-facing webcam	17
Antenna	18
System board	20
5 Specifications	24

6 Backing up and recovering your data	25
Updating apps, widgets, and the operating system	25
Back up and reset	25
Factory data reset	26
7 Power cord set requirements	27
Requirements for all countries	27
Requirements for specific countries and regions	28
8 Recycling	29
Index	30

1 Product description

Category	Description
Product Name	HP Slate7 Plus Tablet
Processor	NVIDIA Tegra 3 quad-core A9 1.30-GHz processor
Panel	7.0-in (1200×800), high-definition (HD), light-emitting display (LED) backlight, 5-point multitouch TouchScreen, wide viewing angle, 44 channel
Memory	1.0-GB system RAM, DDR3 low voltage (LV)
Mass storage	Support for up to 8-GB embedded MultiMediaCard (eMMC) storage
Audio and video	Dual omnidirectional microphones Stereo speakers 0.3-MP VGA front-facing webcam with omnidirectional microphone 5.0-MP, 720p rear-facing webcam with autofocus and omnidirectional microphone
Sensors	<ul style="list-style-type: none">• Accelerometer• eCompass• GPS
Wireless	802.11b/g/n WLAN and Bluetooth 4.0
External card	Micro SD card reader
Ports	3.5-mm audio jack and micro USB
Power requirements	Support for 4000-mAh, USB-charging, Li-ion battery (non-removable) Support for 5-volt, 2-amp, USB cable AC adapter
Operating system	Preinstalled: Android 4.2.2
Serviceability	End user replaceable parts: AC adapter and USB cable

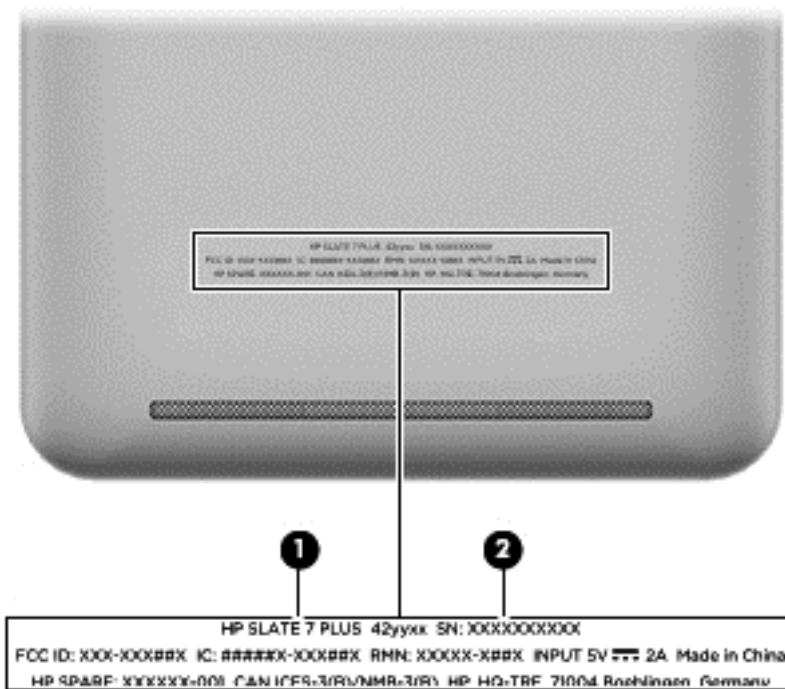
2 External component identification



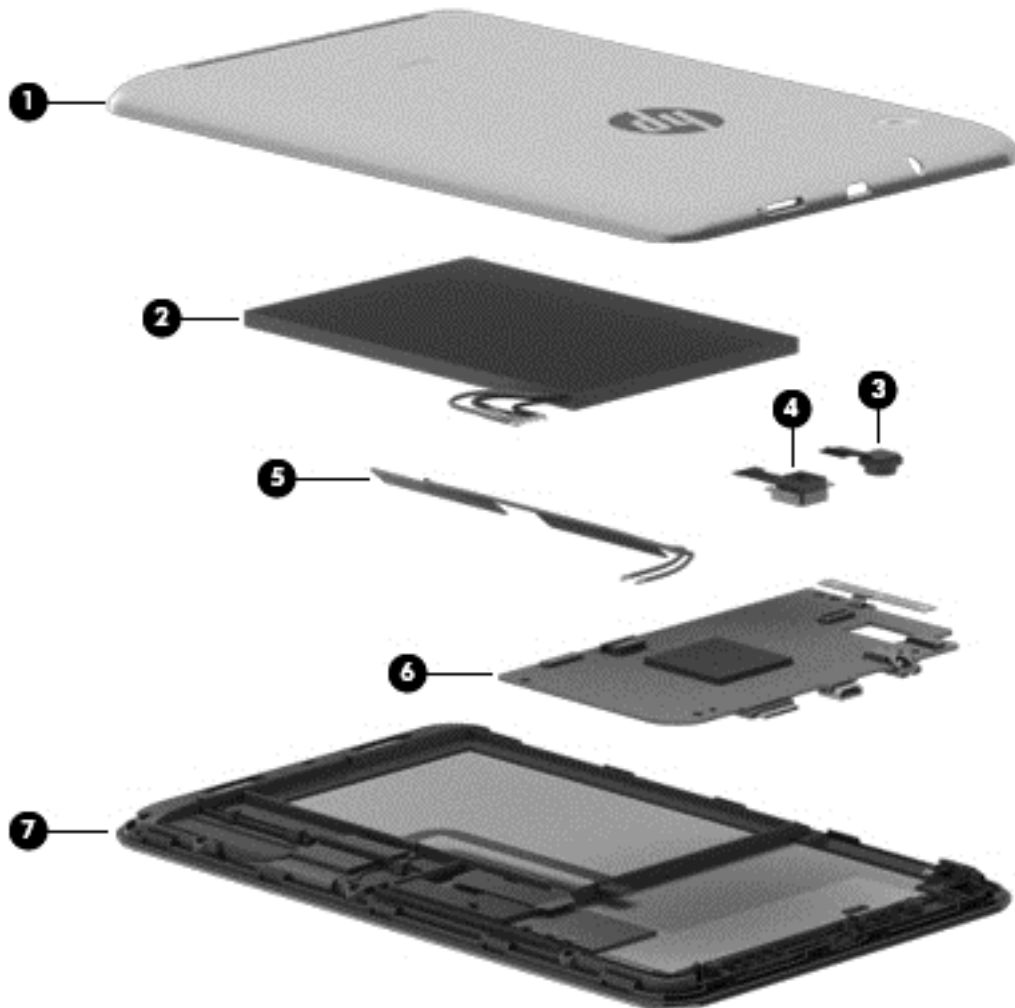
3 Illustrated parts catalog

Locating the serial number, product number, and model number

The serial number and product number of your tablet are located on the left edge of the tablet. The model number of your tablet is located on the back of your tablet. You may need the information when you travel internationally or when you contact support.



Tablet major components



Item	Component	Spare part number
(1)	Tablet cover:	
	In coral finish	743858-001
	In ocean finish	743857-001
	In silver finish	743855-001
	In white finish	743856-001
(2)	Battery , 4000-mAh, USB-charging (includes cable)	743854-001
(3)	Front-facing webcam (includes cable)	743873-001
(4)	Rear-facing webcam (includes cable)	743874-001
(5)	Antenna Kit (includes wireless antenna cable and transceiver and GPS antenna cable and transceiver)	745231-001

Item	Component	Spare part number
(6)	System board equipped with graphics subsystem with UMA memory, 1.0-GB of system memory, and 8-GB eMMC system storage (includes button cable and microphone)	743861-001
	Antenna/Battery/Speaker/System Board Kit (not illustrated)	747684-001
(7)	7.0-in, HD, LED, TouchScreen, WVA, display panel assembly (includes display panel cable, speakers, and TouchScreen cable)	743859-001

Miscellaneous parts

Component	Spare part number
5-volt, 2-amp AC adapter:	
For use only in European countries and regions	747779-001
For use only in North America	745229-001
For use only in the United Kingdom	747780-001
HP Slate7 Plus:	
Equipped with graphics subsystem with UMA memory, 1.0-GB of system memory, and 8-GB eMMC system storage in coral finish	732048-001
Equipped with graphics subsystem with UMA memory, 1.0-GB of system memory, and 8-GB eMMC system storage in ocean finish	732047-001
Equipped with graphics subsystem with UMA memory, 1.0-GB of system memory, and 8-GB eMMC system storage in silver finish	730930-001
Equipped with graphics subsystem with UMA memory, 1.0-GB of system memory, and 8-GB eMMC system storage in white finish	729092-001
Screw Kit	743860-001
USB extension cable	745230-001

Sequential part number listing

Spare part number	Description
743854-001	Battery, 4000-mAh, USB-charging (includes cable)
743855-001	Tablet cover in silver finish
743856-001	Tablet cover in white finish
743857-001	Tablet cover in ocean finish
743858-001	Tablet cover in coral finish
743859-001	7.0-in, HD, LED, TouchScreen, WVA, display panel assembly (includes display panel cable, speakers, and TouchScreen cable)
743860-001	Screw Kit
743861-001	System board equipped with graphics subsystem with UMA memory, 1.0-GB of system memory, and 8-GB eMMC system storage (includes button cable and microphone)
743869-001	HP Slate7 Plus Tablet equipped with graphics subsystem with UMA memory, 1.0-GB of system memory, and 8-GB eMMC system storage in silver finish
743870-001	HP Slate7 Plus Tablet equipped with graphics subsystem with UMA memory, 1.0-GB of system memory, and 8-GB eMMC system storage in white finish
743871-001	HP Slate7 Plus Tablet equipped with graphics subsystem with UMA memory, 1.0-GB of system memory, and 8-GB eMMC system storage in ocean finish
743872-001	HP Slate7 Plus Tablet equipped with graphics subsystem with UMA memory, 1.0-GB of system memory, and 8-GB eMMC system storage in coral finish
743873-001	Front-facing webcam (includes cable)
743874-001	Rear-facing webcam (includes cable)
745229-001	5-volt, 2-amp AC adapter for use only in North America
745230-001	USB extension cable
745231-001	Antenna Kit (includes wireless antenna cable and transceiver and GPS antenna cable and transceiver)
747684-001	Antenna/Battery/Speaker/System Board Kit
747779-001	5-volt, 2-amp AC adapter for use only in European countries and regions
747780-001	5-volt, 2-amp AC adapter for use only in the United Kingdom and Singapore

4 Removal and replacement preliminary requirements


Tools required

You will need the following tools to complete the removal and replacement procedures:


- Plastic case utility tool
- Flat-bladed screw driver
- Magnetic screw driver
- Phillips P00 screw driver

Service considerations


The following sections include some of the considerations that you must keep in mind during disassembly and assembly procedures.

 **NOTE:** As you remove each subassembly from the tablet, place the subassembly (and all accompanying screws) away from the work area to prevent damage.

Plastic parts

 **CAUTION:** Using excessive force during disassembly and reassembly can damage plastic parts. Use care when handling the plastic parts. Apply pressure only at the points designated in the maintenance instructions.

Cables and connectors

 **CAUTION:** When servicing the tablet, be sure that cables are placed in their proper locations during the reassembly process. Improper cable placement can damage the tablet.

Cables must be handled with extreme care to avoid damage. Apply only the tension required to unseat or seat the cables during removal and insertion. Handle cables by the connector whenever possible. In all cases, avoid bending, twisting, or tearing cables. Be sure that cables are routed in such a way that they cannot be caught or snagged by parts being removed or replaced. Handle flex cables with extreme care; these cables tear easily.

Grounding guidelines

Electrostatic discharge damage

Electronic components are sensitive to electrostatic discharge (ESD). Circuitry design and structure determine the degree of sensitivity. Networks built into many integrated circuits provide some protection, but in many cases, ESD contains enough power to alter device parameters or melt silicon junctions.

A discharge of static electricity from a finger or other conductor can destroy static-sensitive devices or microcircuitry. Even if the spark is neither felt nor heard, damage may have occurred.

An electronic device exposed to ESD may not be affected at all and can work perfectly throughout a normal cycle. Or the device may function normally for a while, then degrade in the internal layers, reducing its life expectancy.

⚠ CAUTION: To prevent damage to the tablet when you are removing or installing internal components, observe these precautions:

Keep components in their electrostatic-safe containers until you are ready to install them.

Before touching an electronic component, discharge static electricity by using the guidelines described in this section.

Avoid touching pins, leads, and circuitry. Handle electronic components as little as possible.

If you remove a component, place it in an electrostatic-safe container.

The following table shows how humidity affects the electrostatic voltage levels generated by different activities.

⚠ CAUTION: A product can be degraded by as little as 700 V.

Typical electrostatic voltage levels			
Event	Relative humidity		
	10%	40%	55%
Walking across carpet	35,000 V	15,000 V	7,500 V
Walking across vinyl floor	12,000 V	5,000 V	3,000 V
Motions of bench worker	6,000 V	800 V	400 V
Removing DIPS from plastic tube	2,000 V	700 V	400 V
Removing DIPS from vinyl tray	11,500 V	4,000 V	2,000 V
Removing DIPS from Styrofoam	14,500 V	5,000 V	3,500 V
Removing bubble pack from PCB	26,500 V	20,000 V	7,000 V
Packing PCBs in foam-lined box	21,000 V	11,000 V	5,000 V

Packaging and transporting guidelines

Follow these grounding guidelines when packaging and transporting equipment:

- To avoid hand contact, transport products in static-safe tubes, bags, or boxes.
- Protect ESD-sensitive parts and assemblies with conductive or approved containers or packaging.
- Keep ESD-sensitive parts in their containers until the parts arrive at static-free workstations.
- Place items on a grounded surface before removing items from their containers.
- Always be properly grounded when touching a component or assembly.
- Store reusable ESD-sensitive parts from assemblies in protective packaging or nonconductive foam.
- Use transporters and conveyors made of antistatic belts and roller bushings. Be sure that mechanized equipment used for moving materials is wired to ground and that proper materials are selected to avoid static charging. When grounding is not possible, use an ionizer to dissipate electric charges.

Workstation guidelines

Follow these grounding workstation guidelines:

- Cover the workstation with approved static-shielding material.
- Use a wrist strap connected to a properly grounded work surface and use properly grounded tools and equipment.
- Use conductive field service tools, such as cutters, screw drivers, and vacuums.
- When fixtures must directly contact dissipative surfaces, use fixtures made only of static-safe materials.
- Keep the work area free of nonconductive materials, such as ordinary plastic assembly aids and Styrofoam.
- Handle ESD-sensitive components, parts, and assemblies by the case or PCM laminate. Handle these items only at static-free workstations.
- Avoid contact with pins, leads, or circuitry.
- Turn off power and input signals before inserting or removing connectors or test equipment.

Equipment guidelines

Grounding equipment must include either a wrist strap or a foot strap at a grounded workstation.

- When seated, wear a wrist strap connected to a grounded system. Wrist straps are flexible straps with a minimum of one megohm $\pm 10\%$ resistance in the ground cords. To provide proper ground, wear a strap snugly against the skin at all times. On grounded mats with banana-plug connectors, use alligator clips to connect a wrist strap.
- When standing, use foot straps and a grounded floor mat. Foot straps (heel, toe, or boot straps) can be used at standing workstations and are compatible with most types of shoes or boots. On conductive floors or dissipative floor mats, use foot straps on both feet with a minimum of one megohm resistance between the operator and ground. To be effective, the conductive must be worn in contact with the skin.

The following grounding equipment is recommended to prevent electrostatic damage:


- Antistatic tape
- Antistatic smocks, aprons, and sleeve protectors
- Conductive bins and other assembly or soldering aids
- Nonconductive foam
- Conductive tabletop workstations with ground cords of one megohm resistance
- Static-dissipative tables or floor mats with hard ties to the ground
- Field service kits
- Static awareness labels
- Material-handling packages
- Nonconductive plastic bags, tubes, or boxes
- Metal tote boxes
- Electrostatic voltage levels and protective materials

The following table lists the shielding protection provided by antistatic bags and floor mats.

Material	Use	Voltage protection level
Antistatic plastics	Bags	1,500 V
Carbon-loaded plastic	Floor mats	7,500 V
Metallized laminate	Floor mats	5,000 V

Removal and replacement procedures

Component replacement procedures

 **NOTE:** It is highly recommended that all personal data be backed up before servicing the tablet.

This chapter provides removal and replacement procedures for Authorized Service Provider only parts.

There are as many as 4 screws that must be removed, replaced, and/or loosened when servicing the tablet. Make special note of each screw size and location during removal and replacement.


Tablet cover

Description	Spare part number
In coral finish	743858-001
In ocean finish	743857-001
In silver finish	743855-001
In white finish	743856-001


Before removing the disassembling the tablet, follow these steps:

1. Turn off the tablet. If you are unsure whether the tablet is off or in Hibernation, turn the tablet on, and then shut it down through the operating system.
2. Disconnect the power from the tablet by unplugging the power cord from the tablet.
3. Disconnect all external devices from the tablet.

Remove the tablet cover:

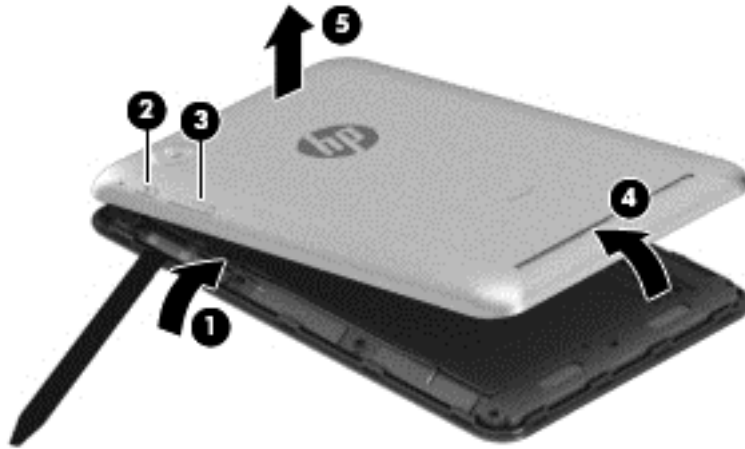
 **CAUTION:** Before positioning the tablet with the display panel down, make sure the work surface is clear of tools, screws, and any other foreign objects. Failure to follow this caution can result in damage to the display screen.


1. Position the tablet with the display panel down and the right side toward you.
2. Carefully insert a thin plastic tool **(1)** between the tablet cover and the display panel assembly, separating the two components.

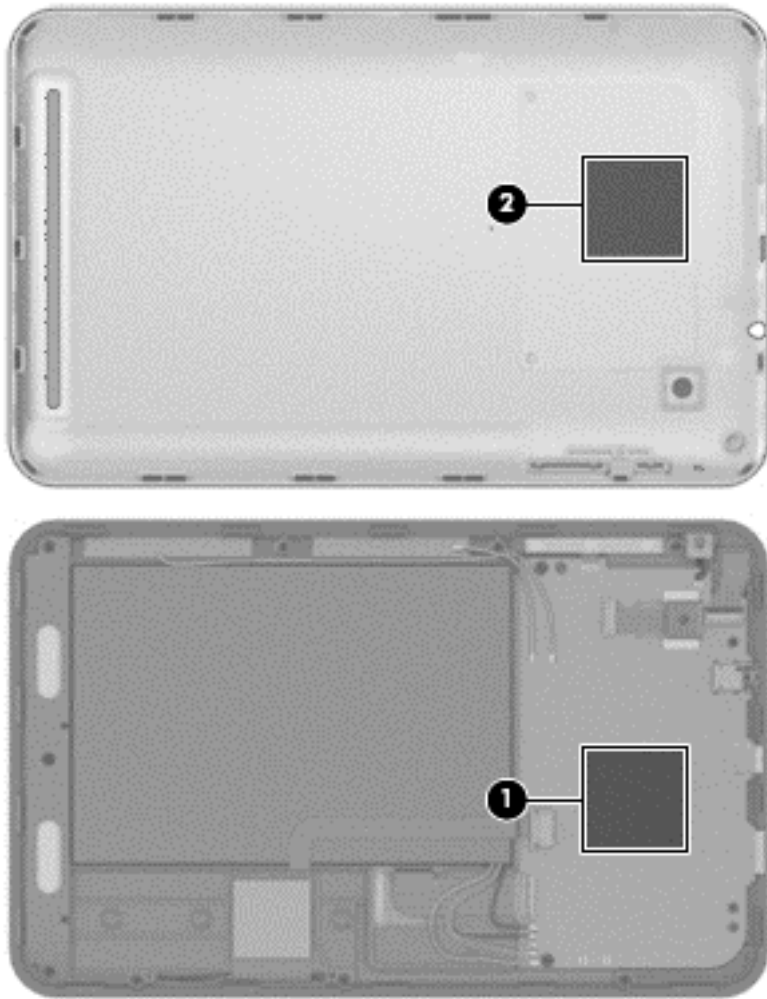
 **CAUTION:** The first insertion point for the tool should be between the power button **(2)** and the volume buttons **(3)**. Be careful not to insert the tool directly under the power button or the volume buttons. Failure to follow this caution can result in damage to the tablet.

3. Continue to work the tool away from the top edge of the tablet until the bottom edge of the tablet cover **(4)** is completely separated from the display panel assembly.

4. Remove the tablet cover (5)



 **NOTE:** The thermal material must be inspected, and if necessary, thoroughly cleaned from the surfaces of the system board and the tablet cover components each time the tablet cover is removed. Replacement thermal material is included with the tablet cover and system board spare part kits. A thermal pad is used on the system board (1) and the tablet cover (2) that corresponds to it.




Reverse this procedure to install the tablet cover.


Battery

Description	Spare part number
4000-mAh, USB-charging battery (includes cable)	743854-001

Before removing the battery, follow these steps:


1. Turn off the tablet. If you are unsure whether the tablet is off or in Hibernation, turn the tablet on, and then shut it down through the operating system.
2. Disconnect the power from the tablet by unplugging the power cord from the tablet.
3. Disconnect all external devices from the tablet.
4. Remove the tablet cover (see [Tablet cover on page 12](#)).


 **WARNING!** To reduce potential safety issues, use only the battery provided with the tablet, a replacement battery provided by HP, or a compatible battery purchased from HP.

 **CAUTION:** Removing a battery that is the sole power source for the tablet can cause loss of information. To prevent loss of information, save your work or shut down the tablet through Windows before removing the battery.

Remove the battery:

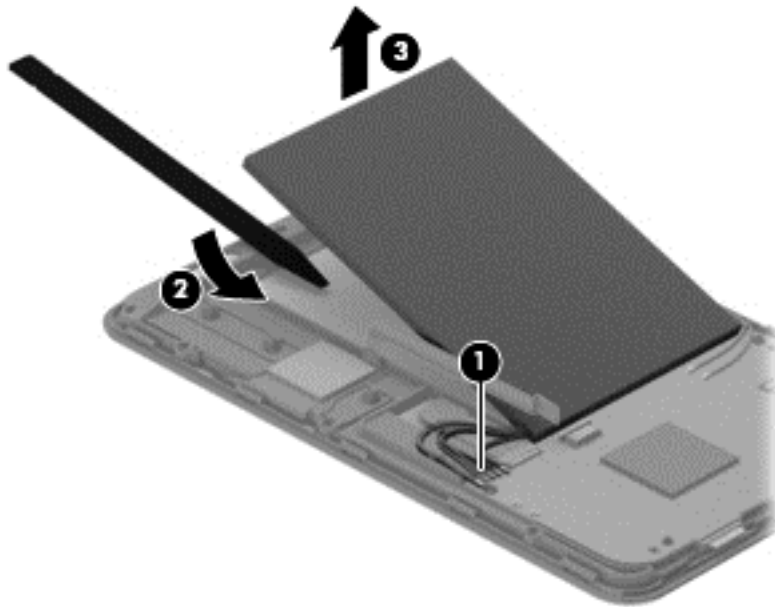
1. Disconnect the battery cables **(1)** from the system board.


 **NOTE:** The battery cables must be unsoldered from the system board. The battery cables are soldered to the system board in the following sequence, top to bottom: **red, blue, green, yellow, black**.

 **WARNING!** When removing the battery, be careful not to bend it. Bending the battery can cause damage to it.

2. Insert a thin, plastic tool **(2)** between the left side of the battery and the display panel assembly and detach the battery from the display panel assembly. (The battery is attached to the display panel assembly with double-sided adhesive.)

3. Remove the battery **(3)**.



 **NOTE:** After the battery has been removed, inspect the display assembly for tape residue. Tape residue left on the display assembly can affect the installation of the replacement battery.

Reverse this procedure to install the battery.

Front-facing webcam

Description	Spare part number
Front-facing webcam (includes cable)	743873-001

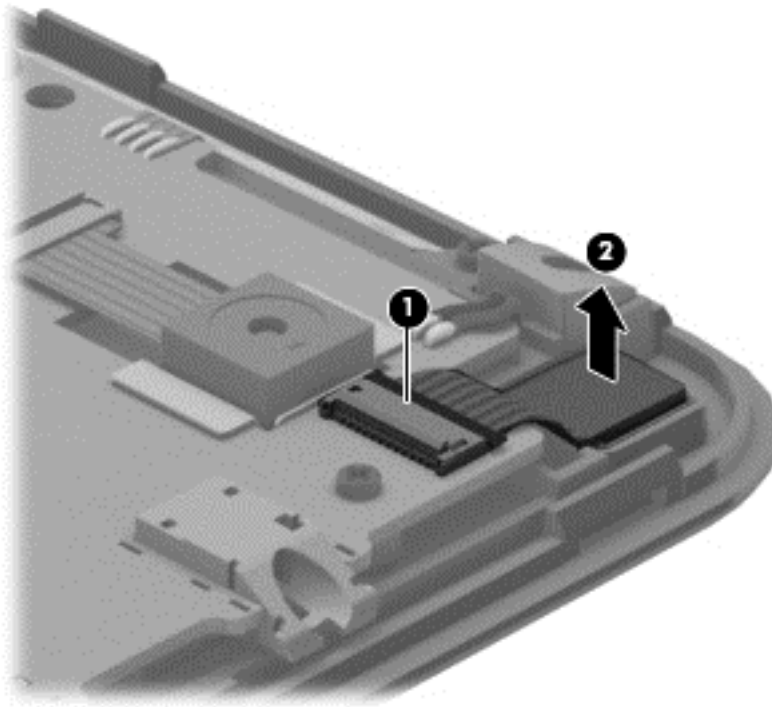
Before removing the front-facing webcam, follow these steps:

1. Turn off the tablet. If you are unsure whether the tablet is off or in Hibernation, turn the tablet on, and then shut it down through the operating system.
2. Disconnect the power from the tablet by unplugging the power cord from the tablet.
3. Disconnect all external devices from the tablet.
4. Remove the tablet cover (see [Tablet cover on page 12](#)).
5. Disconnect the battery cable from the system board (see [Battery on page 15](#)).

Remove the front-facing webcam:

1. Release the zero insertion force (ZIF) connector **(1)** to which the front-facing webcam cable is attached, and then disconnect the front-facing webcam cable from the system board.

2. Remove the front-facing webcam (2) and cable.



Reverse this procedure to install the front-facing webcam.

Rear-facing webcam

Description	Spare part number
Rear-facing webcam (includes cable)	743874-001

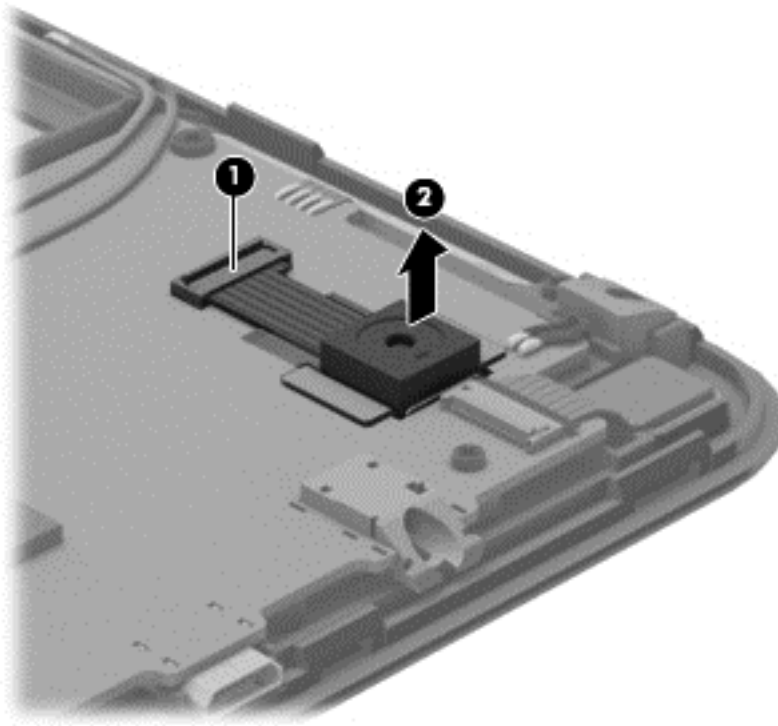
Before removing the rear-facing webcam, follow these steps:

1. Turn off the tablet. If you are unsure whether the tablet is off or in Hibernation, turn the tablet on, and then shut it down through the operating system.
2. Disconnect the power from the tablet by unplugging the power cord from the tablet.
3. Disconnect all external devices from the tablet.
4. Remove the tablet cover (see [Tablet cover on page 12](#)).
5. Disconnect the battery cable from the system board (see [Battery on page 15](#)).

Remove the rear-facing webcam:

1. Release the ZIF connector (1) to which the rear-facing webcam cable is attached, and then disconnect the rear-facing webcam cable from the system board.

2. Remove the rear-facing webcamera **(2)** and cable.



Reverse this procedure to install the rear-facing webcamera.

Antenna

Description	Spare part number
Antenna Kit (includes wireless antenna cable and transceiver and GPS antenna cable and transceiver)	745231-001

Before removing the antenna, follow these steps:

1. Turn off the tablet. If you are unsure whether the tablet is off or in Hibernation, turn the tablet on, and then shut it down through the operating system.
2. Disconnect the power from the tablet by unplugging the power cord from the tablet.
3. Disconnect all external devices from the tablet.
4. Remove the tablet cover (see [Tablet cover on page 12](#)).
5. Disconnect the battery cable from the system board (see [Battery on page 15](#)).

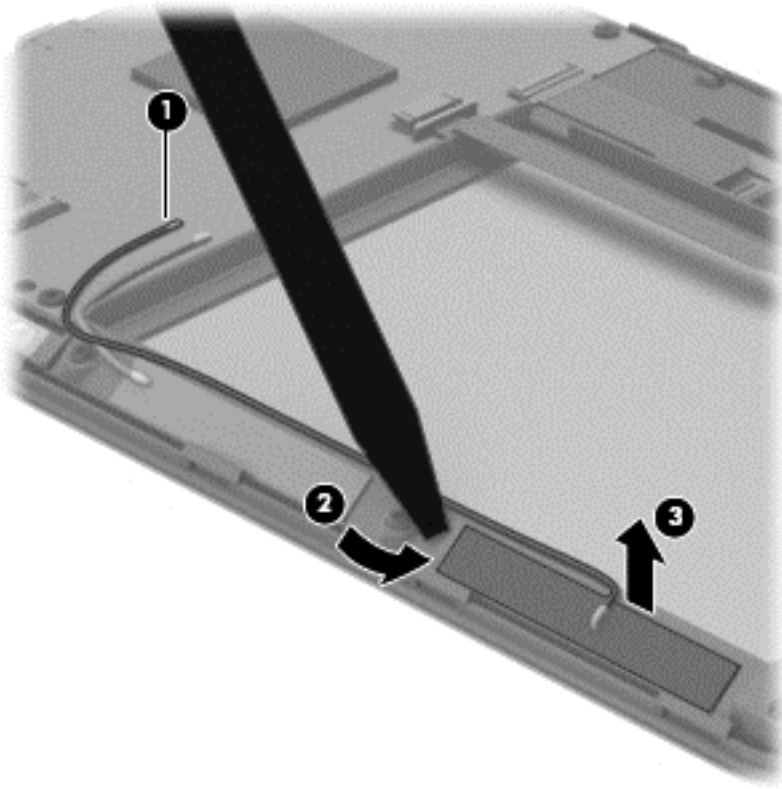
Remove the antenna:

1. Disconnect the wireless antenna cable **(1)** from the system board.




NOTE: The wireless antenna cable must be unsoldered from the system board.

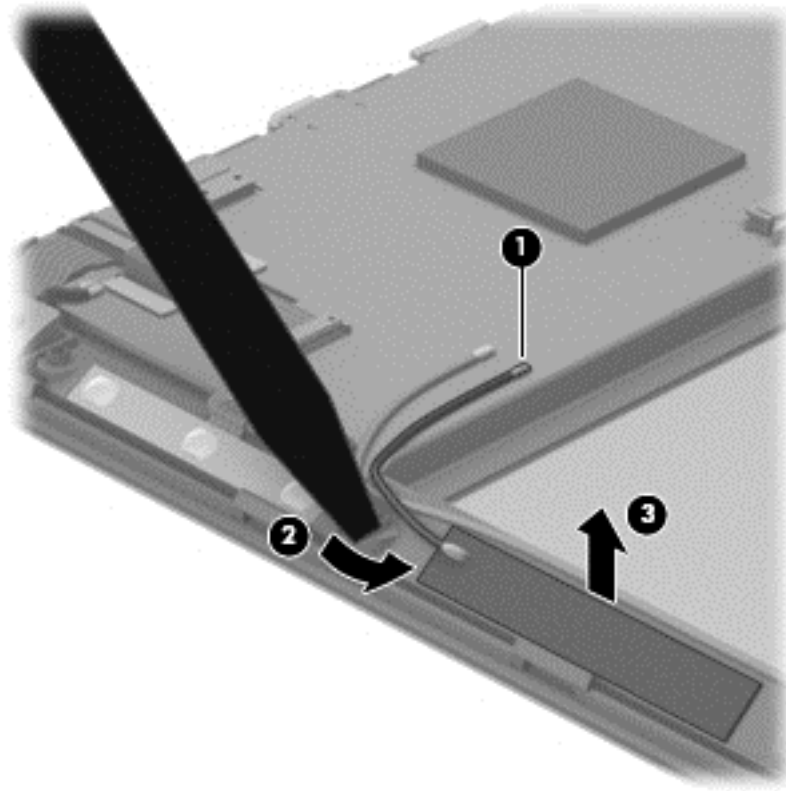
2. Insert a thin, plastic tool **(2)** under the left side of the wireless antenna transceiver and detach the transceiver **(3)** from the display panel assembly. (The wireless antenna transceiver is attached to the display panel assembly with double-sided adhesive.)



3. Disconnect the GPS antenna cable **(1)** from the system board.


 **NOTE:** The GPS antenna cable must be unsoldered from the system board.

4. Insert a thin, plastic tool **(2)** under the left side of the GPS antenna transceiver and detach the transceiver **(3)** from the display panel assembly. (The GPS antenna transceiver is attached to the display panel assembly with double-sided adhesive.)



Reverse this procedure to install the antennas.

System board


 **NOTE:** Soldering is involved in the removal and replacement of the system board. To reduce the amount of soldering required in this removal and replacement process, an Antenna/Battery/Speaker/System Board Kit spare part kit exists. This kit is available using spare part number 747684-001.

Description	Spare part number
System board equipped with graphics subsystem with UMA memory, 1.0-GB of system memory, and 8-GB eMMC system storage (includes button cable and microphone)	743861-001

Before removing the system board, follow these steps:

1. Turn off the tablet. If you are unsure whether the tablet is off or in Hibernation, turn the tablet on, and then shut it down through the operating system.
2. Disconnect the power from the tablet by unplugging the power cord from the tablet.
3. Disconnect all external devices from the tablet.

4. Remove the tablet cover (see [Tablet cover on page 12](#)).
5. Disconnect the battery cable from the system board (see [Battery on page 15](#)).


 **NOTE:** When replacing the system board, be sure that the following components are removed from the defective system board and installed on the replacement system board:

- Front-facing webcam (see [Front-facing webcam on page 16](#))
- Rear-facing webcam (see [Rear-facing webcam on page 17](#))


Remove the system board:

1. Disconnect the following cables from the system board:

(1) GPS antenna cable

 **NOTE:** The GPS antenna cable must be unsoldered from the system board.


(2) Wireless antenna cable

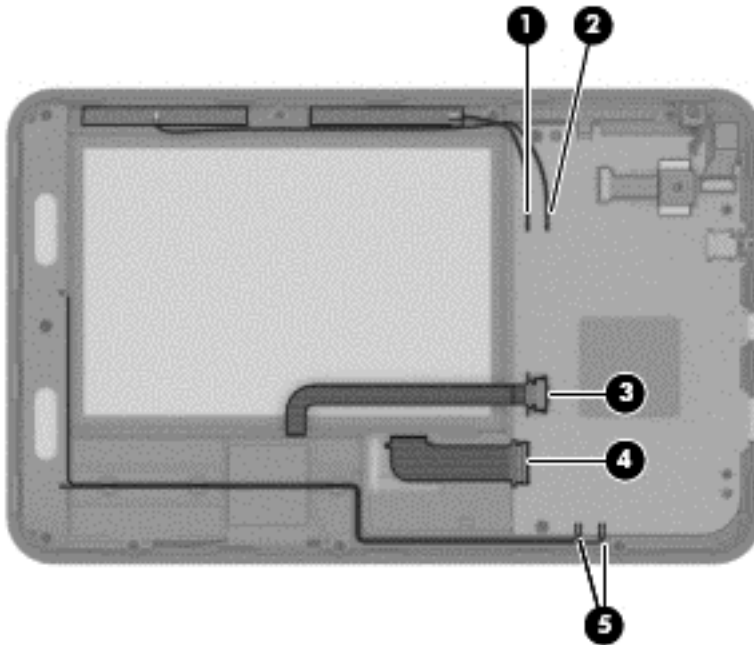
 **NOTE:** The wireless antenna cable must be unsoldered from the system board.


(3) TouchScreen ribbon cable from the system board ZIF connector

(4) Display ribbon cable from the system board ZIF connector

(5) Speaker cables

 **NOTE:** The speaker cables must be unsoldered from the system board.



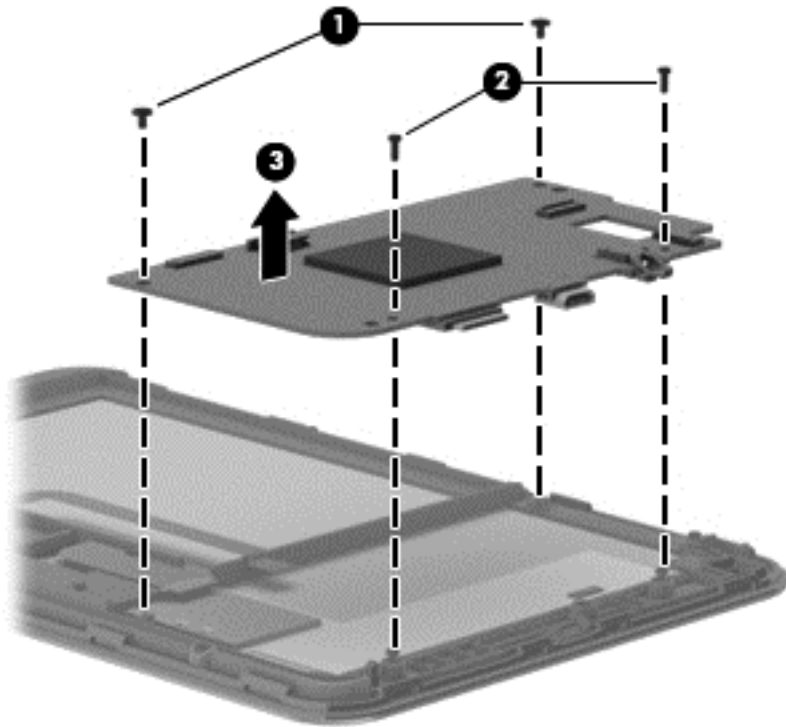
 **CAUTION:** When detaching the power button cable, take care not to damage the soldered connection (3) of the power button cable to the system board. Failure to follow this caution can result in damage to the power button cable and system board.

2. Insert a thin, plastic tool **(1)** under the left side of the power button cable until the cable **(2)** is fully detached from the display panel assembly. (The power button cable is attached to the display panel assembly with double-sided adhesive.)



3. Remove the two Phillips PM1.0×2.5 screws **(1)** and the two Phillips PM1.5×5.0 screws **(2)** that secure the system board to the display panel assembly.

4. Remove the system board (3).



Reverse this procedure to install the system board.

5 Specifications

	Metric	U.S.
Dimensions		
Width	12.27 cm	4.83 in
Depth	19.47 cm	7.67 in
Height	1.01 cm	0.43 in
Weight (lowest weight configuration)	0.37 g	0.83 lb
Temperature		
Operating	5°C to 35°C	41°F to 95°F
Nonoperating	-20°C to 60°C	-4°F to 140°F
Relative humidity (non-condensing)		
Operating	10% to 90%	
Nonoperating	5% to 95%	
Maximum altitude (unpressurized)		
Operating	-15 m to 3,048 m	-50 ft to 10,000 ft
Nonoperating	-15 m to 12,192 m	-50 ft to 40,000 ft
NOTE: Applicable product safety standards specify thermal limits for plastic surfaces. The device operates well within this range of temperatures.		


6 Backing up and recovering your data

Updating apps, widgets, and the operating system



HP recommends that you update your apps, widgets, and the operating system on a regular basis to the latest versions. Updates can resolve issues and bring new features and options to your tablet. Technology is always changing, and updating apps, widgets, and the operating system allows your tablet to run the latest technology available. For example, older apps and widgets might not work well with the most recent operating system.

Go to the Google Play store to download the latest versions of HP and third-party apps and widgets. The operating system will download system updates automatically and notify you when it is ready to install these updates. If you want to update the operating system manually, go to <http://www.hp.com/support>.

Back up and reset

 **NOTE:** Performing a data reset will erase all personal data. It is highly recommended that all personal data be backed up before performing a data reset.

You can set preferences for backing up and restoring your data in case of loss.

1. Touch , and then touch .
2. Under **PERSONAL**, touch **Back up & reset**.
3. Under **BACKUP & RESTORE**, select one or more of the following:
 - **Back up my data**—Select the check box to enable backing up app data, Wi-Fi passwords, and other settings to Google servers.
 - **Backup account**—Select a Google account for backing up data.
 - **Automatic restore**—Select the check box to enable backed up settings and data to be restored when an app is reinstalled.

Factory data reset

To reset all settings and delete all data on the device:

1. Touch , and then touch .
2. Under **PERSONAL**, touch **Back up & reset**.
3. Under **PERSONAL DATA**, select **Factory data reset**, and then follow the on-screen instructions.

7 Power cord set requirements

The wide-range input feature of the tablet permits it to operate from any line voltage from 100 to 120 volts AC, or from 220 to 240 volts AC.

The 3-conductor power cord set included with the tablet meets the requirements for use in the country or region where the equipment is purchased.

Power cord sets for use in other countries and regions must meet the requirements of the country or region where the tablet is used.

Requirements for all countries

The following requirements are applicable to all countries and regions:

- The length of the power cord set must be at least 1.0 m (3.3 ft) and no more than 2.0 m (6.5 ft).
- All power cord sets must be approved by an acceptable accredited agency responsible for evaluation in the country or region where the power cord set will be used.
- The power cord sets must have a minimum current capacity of 10 amps and a nominal voltage rating of 125 or 250 V AC, as required by the power system of each country or region.
- The appliance coupler must meet the mechanical configuration of an EN 60 320/IEC 320 Standard Sheet C13 connector for mating with the appliance inlet on the back of the tablet.

Requirements for specific countries and regions

Country/region	Accredited agency	Applicable note number
Australia	EANSW	1
Austria	OVE	1
Belgium	CEBC	1
Canada	CSA	2
Denmark	DEMKO	1
Finland	FIMKO	1
France	UTE	1
Germany	VDE	1
Italy	IMQ	1
Japan	METI	3
The Netherlands	KEMA	1
Norway	NEMKO	1
The People's Republic of China	COC	5
South Korea	EK	4
Sweden	CEMKO	1
Switzerland	SEV	1
Taiwan	BSMI	4
The United Kingdom	BSI	1
The United States	UL	2

1. The flexible cord must be Type HO5VV-F, 3-conductor, 1.0-mm² conductor size. Power cord set fittings (appliance coupler and wall plug) must bear the certification mark of the agency responsible for evaluation in the country or region where it will be used.
2. The flexible cord must be Type SPT-3 or equivalent, No. 18 AWG, 3-conductor. The wall plug must be a two-pole grounding type with a NEMA 5-15P (15 A, 125 V) or NEMA 6-15P (15 A, 250 V) configuration.
3. The appliance coupler, flexible cord, and wall plug must bear a "T" mark and registration number in accordance with the Japanese Dentori Law. The flexible cord must be Type VCT or VCTF, 3-conductor, 1.00-mm² conductor size. The wall plug must be a two-pole grounding type with a Japanese Industrial Standard C8303 (7 A, 125 V) configuration.
4. The flexible cord must be Type RVV, 3-conductor, 0.75-mm² conductor size. Power cord set fittings (appliance coupler and wall plug) must bear the certification mark of the agency responsible for evaluation in the country or region where it will be used.
5. The flexible cord must be Type VCTF, 3-conductor, 0.75-mm² conductor size. Power cord set fittings (appliance coupler and wall plug) must bear the certification mark of the agency responsible for evaluation in the country or region where it will be used.

8 Recycling

When a non-rechargeable or rechargeable battery has reached the end of its useful life, do not dispose of the battery in general household waste. Follow the local laws and regulations in your area for battery disposal.

HP encourages customers to recycle used electronic hardware, HP original print cartridges, and rechargeable batteries. For more information about recycling programs, see the HP Web site at <http://www.hp.com/recycle>.

Index

- A**
 - AC adapter, spare part numbers 5, 6
 - antenna
 - removal 18
 - spare part number 4, 5, 6, 18
 - Antenna Kit, spare part number 18
 - Antenna/Battery/Speaker/System Board Kit, spare part number 5, 6, 20
 - audio, product description 1
- B**
 - battery
 - removal 15
 - spare part numbers 4, 5, 6, 15
- C**
 - cables, service considerations 8
 - connectors, service considerations 8
- D**
 - display panel assembly, spare part number 5, 6
 - display panel, product description 1
- E**
 - electrostatic discharge 9
 - equipment guidelines 11
 - external card, product description 1
- F**
 - front-facing webcam
 - removal 16
 - spare part number 4, 6, 16
- G**
 - GPS antenna
 - removal 18
 - spare part number 18
 - grounding guidelines 9
 - guidelines
 - equipment 11
 - grounding 9
 - packaging 10
 - transporting 10
 - workstation 10
- M**
 - mass storage, product description 1
 - memory module, product description 1
 - microphone, product description 1
 - model name 1
- O**
 - operating system, product description 1
- P**
 - packaging guidelines 10
 - plastic parts, service considerations 7
 - ports, product description 1
 - power cord, set requirements 27
 - power requirements, product description 1
 - processor, product description 1
 - product description
 - audio 1
 - display panel 1
 - external card 1
 - mass storage 1
 - memory module 1
 - microphone 1
 - operating system 1
 - ports 1
 - power requirements 1
 - processors 1
 - product name 1
 - sensors 1
 - serviceability 1
 - video 1
 - wireless 1
 - product name 1
- R**
 - rear-facing webcam
 - removal 17
 - spare part number 4, 6, 17
 - removal/replacement procedures 12
- S**
 - Screw Kit, spare part number 5, 6
 - sensors, product description 1
 - service considerations
 - cables 8
 - connectors 8
 - plastic parts 7
 - serviceability, product description 1
 - speakers, spare part number 5, 6
 - specifications 24
 - system board
 - removal 20

spare part number 5, 20
spare part numbers 5, 6

T

tablet

major components 4
spare part numbers 5, 6
specifications 24

tablet cover

removal 12
spare part numbers 4, 6, 12

tools required 7

transporting guidelines 10

U

USB extension cable, spare part
number 5, 6

V

video, product description 1

W

webcamera

removal 16, 17
spare part numbers 4, 6, 16,
17

wireless antenna

removal 18
spare part number 4, 5, 6, 18

wireless, product description 1

workstation guidelines 10

