

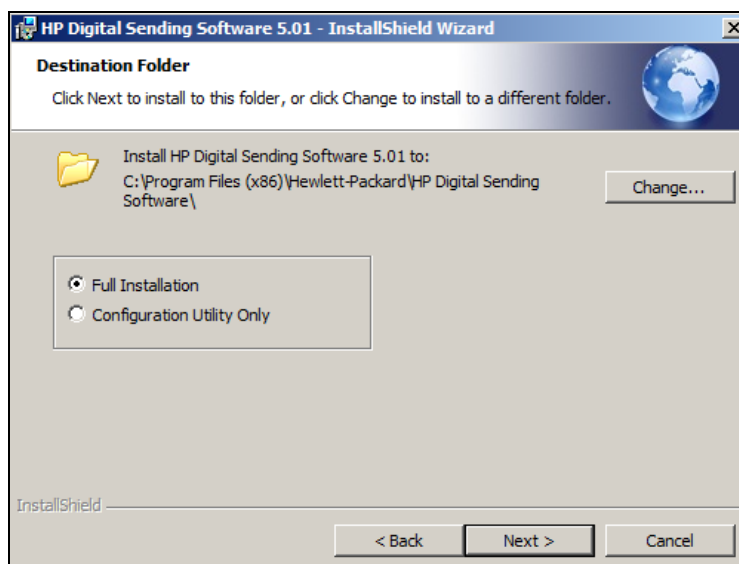
Document Summary

Step-by-step setup of DSS 5 in a Windows 2008 R2 cluster server environment.

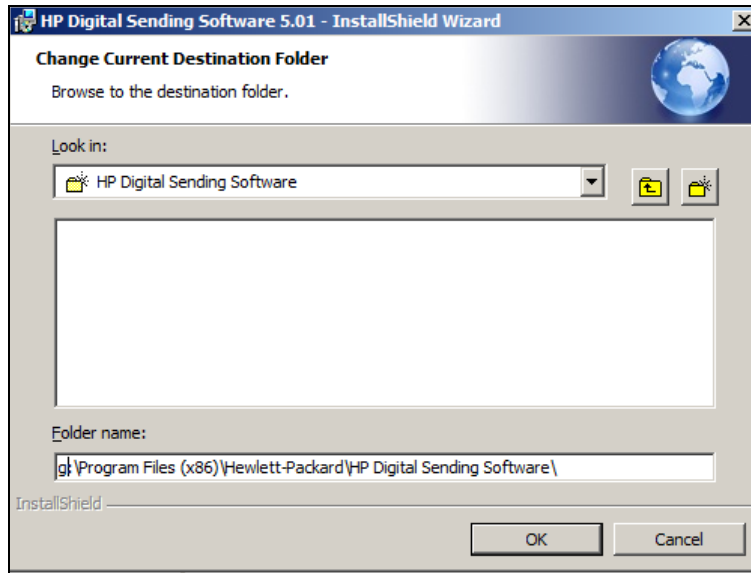
- I. On the cluster node that has ownership over the quorum and shared cluster storage, create a new environment variable, `DSS_SERVER_IP` with the value being the cluster server IP address.

Note: *Make sure that the `DSS_SERVER_IP` value is the cluster server IP and not the node or heartbeat IP.*

- II. On the cluster node machine that has ownership over the quorum and data shared cluster storage, you need to install DSS (be sure to install to the shared drive rather than the C: drive).
 1. When the installer prompts for a Destination folder. Change the destination to the shared storage.



2. The easiest way to go about this is to change the installation drive from C: to the shared storage drive during the installation process, keeping the default installation path unchanged.

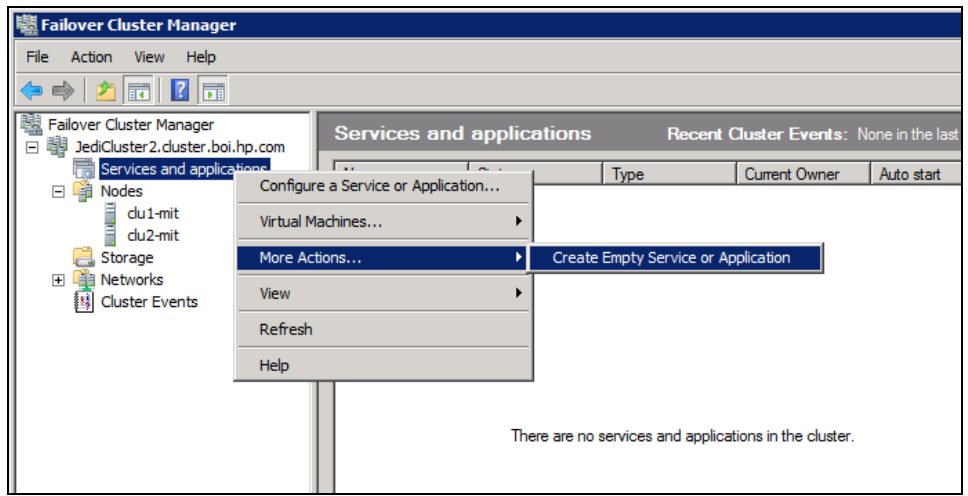


- III. In Windows Services console, stop the [HP MFP Digital Sending Software](#) and the [SQL Server \(HPDSS2008\) Service](#):

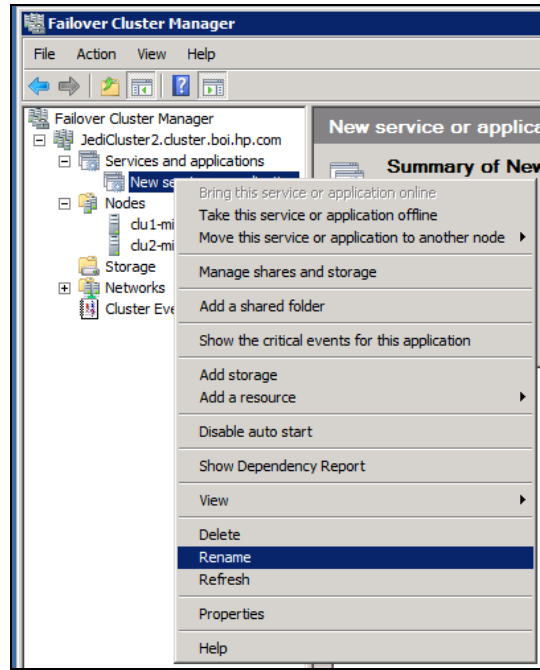
Group Policy Client	The service is respon...	Started	Automatic
Health Key and Certificate Management	Provides X.509 certifi...		Manual
HP Digital Sending Software	HP Digital Sending So...	Started	Automatic
Human Interface Device Access	Enables generic input...		Manual
IKE and AuthIP IPsec Keying Modules	The IKEEXT service h...	Started	Automatic
Interactive Services Detection	Enables user notificat...		Manual
SPP Notification Service	Provides Software Lic...		Manual
SQL Active Directory Helper Service	Enables integration w...		Disabled
SQL Server (HPDSS2008)	Provides storage, pro...		Automatic
SQL Server Agent (HPDSS2008)	Executes jobs, monit...		Disabled
SQL Server Browser	Provides SQL Server ...	Started	Automatic
SQL Server VSS Writer	Provides the interfac...	Started	Automatic
SSDP Discovery	Discovers networked...		Disabled

- IV. Export the DSS installed Certificates to the shared cluster storage.
 1. Copy **DssCertificates.zip** to the shared cluster storage and extract the zip file.
 2. From within the extracted files execute **ExportCerts.bat**. This should save two **.pfx** certificates to the same directory the script was executed.

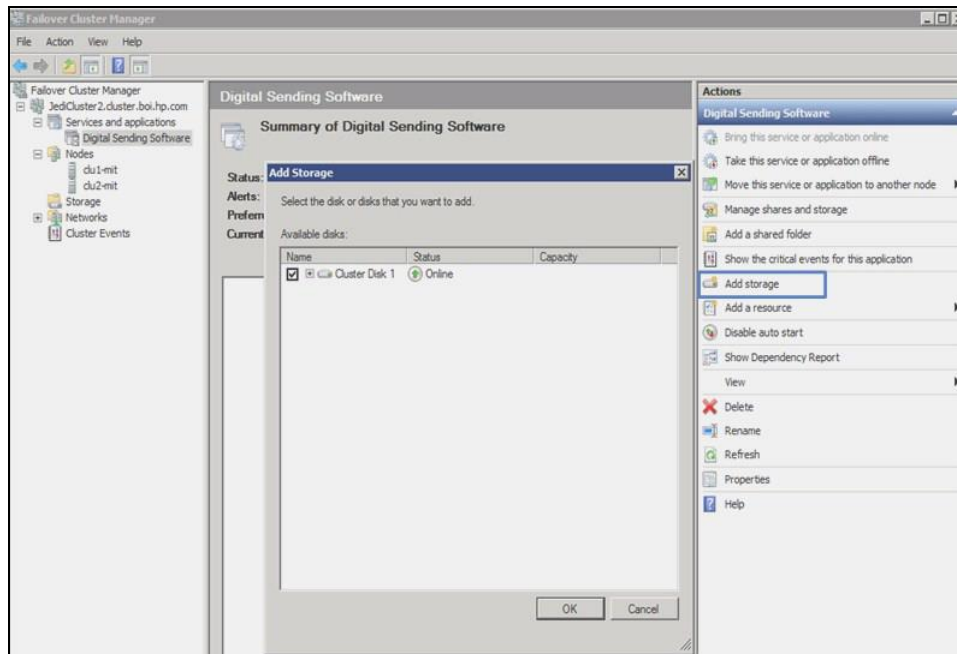
- V. DSS configuration is complete on this node. Using the **Failover Cluster Manager** force the shared resources to another node in the cluster.
- VI. On the new node that has ownership over the quorum and data shared cluster storage, create a new environment variable `DSS_SERVER_IP` with the value being the cluster server IP address.
- VII. Run the DSS install.
 - Note:** *Make sure to select a custom install and specify the install path to be the same location as the install on the previous node.*
- VIII. In Windows Services console, stop the [HP MFP Digital Sending Software](#) and the [SQL Server \(HPDSS2008\) Service](#).
- IX. Execute **ImportCerts.bat** that is in the DssCertificates directory on the shared cluster storage.
- X. In the Windows Services Console, start the [SQL Server \(HPDSS2008\)](#) and the [HP MFP Digital Sending Software Service](#).
- XI. Configure DSS as a failover application in **Failover Cluster Manager**.
 1. Open **Failover Cluster Manager**.
 2. Expand your cluster server. Right-click **Services and applications**, select **More Actions...** , and then select **Create Empty Service or Application**.



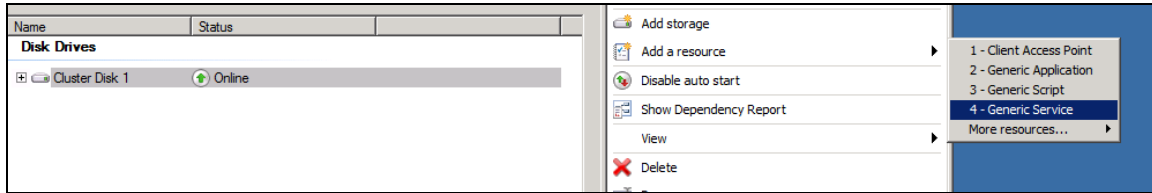
- Right-click the **New service or application** and select **Rename**.
Rename the application to Digital Sending Software. (You can use any naming convention that works best for you or the standard naming convention of your business.)



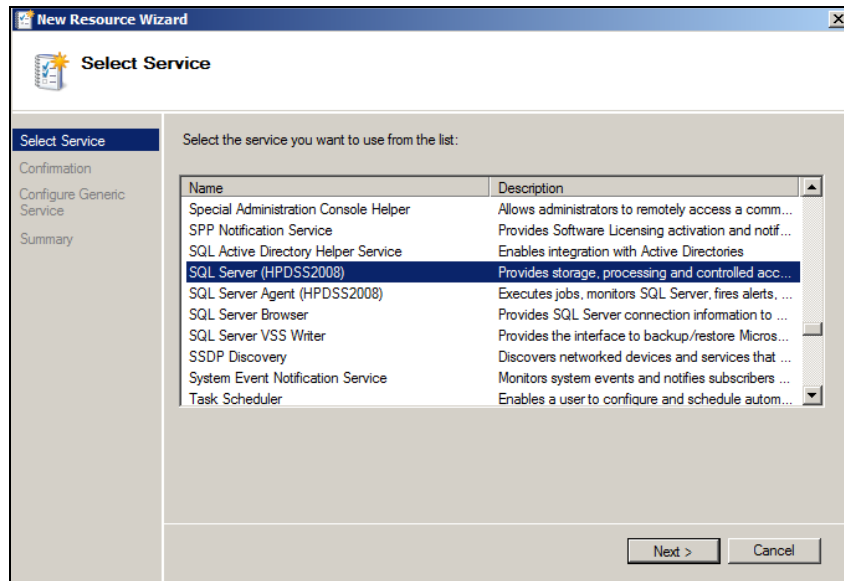
- Select the Digital Sending Software application selected, select **Add storage** from **Actions**. Select the shared storage that DSS has been installed on:



5. Select **Add a resource** from **Actions**. Select **Generic Service**.

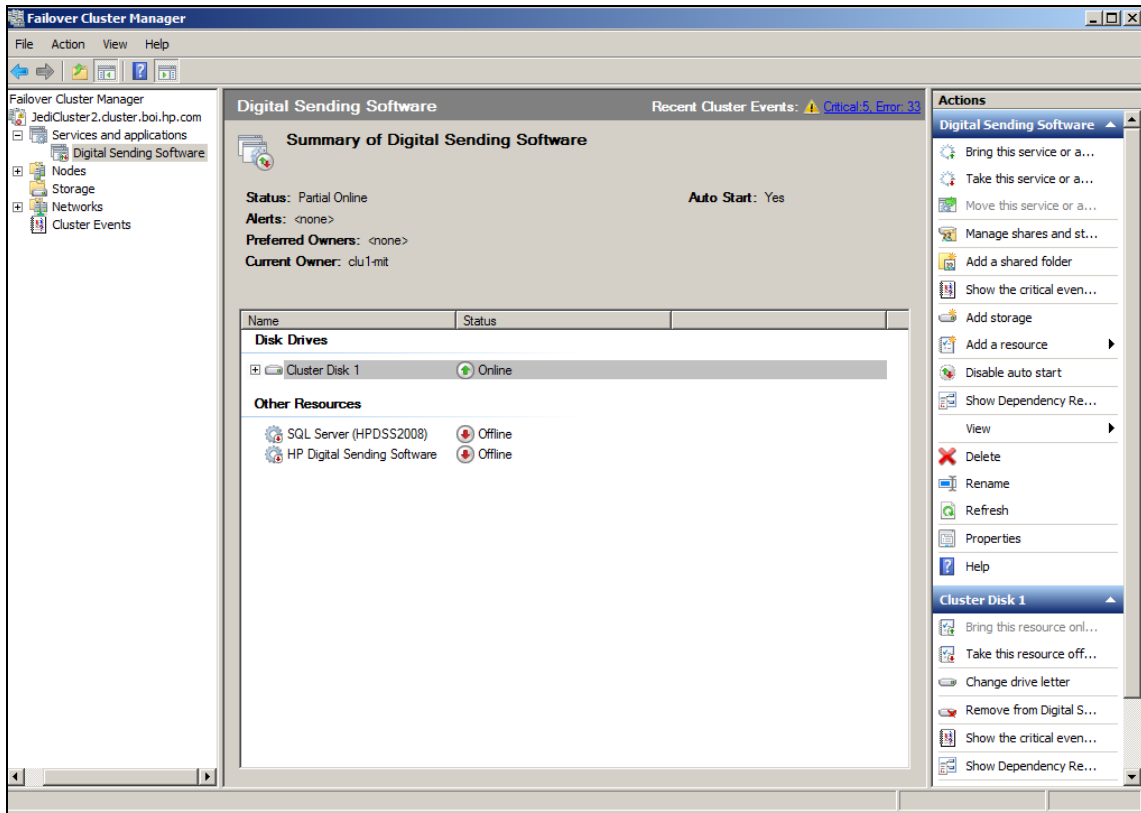


6. Select **SQL Server (HPDSS2008)** from the services list. Accept all the default options from the rest of the **New Resource Wizard**.



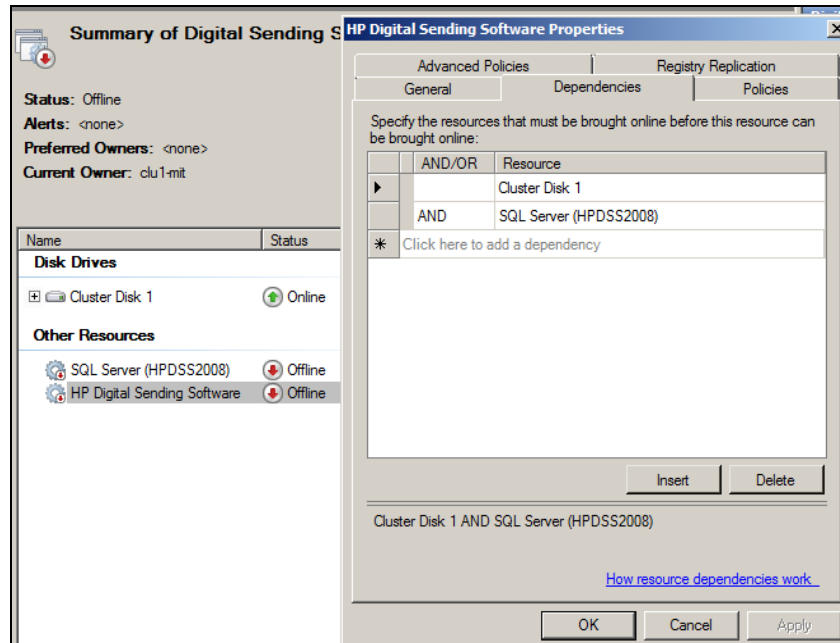
7. Repeat steps 5 and 6 to add the HP MFP Digital Sending Software service as resources the same way the **SQL Server (HPDSS2008)** service was added.

8. When all the resources have been added, the **Summary of Digital Sending Software** should look similar to the below configuration figure.

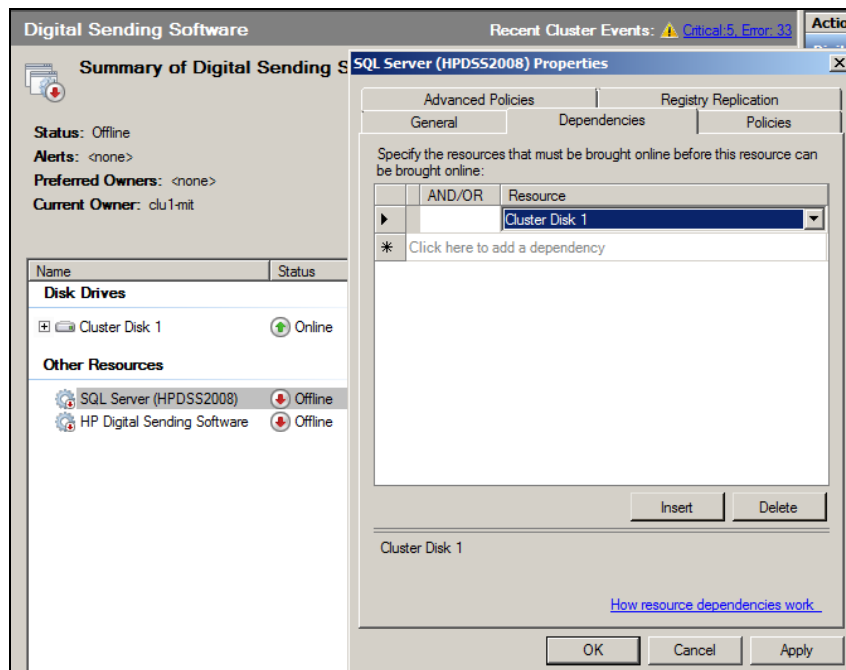


9. Configure Service Dependencies.

- i. Right-click on the **HP Digital Sending Software Resource** and select **Properties**. In the **Properties** dialog select the **Dependencies** tab. Add dependencies for **SQL Server (HPDSS2008)** and the shared storage. The dependencies should look similar to the below configuration figure.



- ii. Add **Dependencies** to SQL Server (HPDSS2008) resource.
Add **Dependencies** for the shared storage:



10. Right-click the **Digital Sending Software** application and select **Bring the service or application online**.

