



## HP Slate6 VoiceTab

Maintenance and Service Guide

**IMPORTANT!** This document is intended for  
HP authorized service providers only.

© Copyright 2013 Hewlett-Packard  
Development Company, L.P.

Bluetooth is a trademark owned by its proprietor and used by Hewlett-Packard Company under license. SD Logo is a trademark of its proprietor.

The information contained herein is subject to change without notice. The only warranties for HP products and services are set forth in the express warranty statements accompanying such products and services. Nothing herein should be construed as constituting an additional warranty. HP shall not be liable for technical or editorial errors or omissions contained herein.

First Edition: December 2013

Document Part Number: 752192-001

**Product notice**

This guide describes features that are common to most models. Some features may not be available on your computer.

## Safety warning notice

---

**⚠ WARNING!** To reduce the possibility of heat-related injuries or of overheating the device, do not place the device directly on your lap or obstruct the device air vents. Use the device only on a hard, flat surface. Do not allow another hard surface, such as an adjoining optional printer, or a soft surface, such as pillows or rugs or clothing, to block airflow. Also, do not allow the AC adapter to contact the skin or a soft surface, such as pillows or rugs or clothing, during operation. The device and the AC adapter comply with the user-accessible surface temperature limits defined by the International Standard for Safety of Information Technology Equipment (IEC 60950).

---



---

# Table of contents

|  |           |
|--|-----------|
| <b>1 Product description .....</b>                                 | <b>1</b>  |
| <b>2 External component identification .....</b>                   | <b>3</b>  |
| <b>3 Illustrated parts catalog .....</b>                           | <b>5</b>  |
| Locating the serial number, product number, and model number ..... | 5         |
| Tablet major components .....                                      | 6         |
| Miscellaneous parts .....  | 7         |
| Sequential part number listing .....                               | 7         |
| <b>4 Removal and replacement preliminary requirements .....</b>    | <b>9</b>  |
| Tools required .....   | 9         |
| Service considerations .....                                       | 9         |
| Plastic parts .....  | 9         |
| Cables and connectors .....  | 9         |
| Grounding guidelines .....   | 10        |
| Electrostatic discharge damage .....                               | 10        |
| Packaging and transporting guidelines .....                        | 11        |
| Workstation guidelines .....                                       | 11        |
| <b>5 Removal and replacement procedures .....</b>                  | <b>13</b> |
| Tablet component replacement procedures .....                      | 13        |
| Back cover .....   | 13        |
| Battery .....  | 14        |
| Middle frame .....   | 15        |
| Power button actuator and volume button actuator .....             | 17        |
| Front-facing webcam .....  | 18        |
| Bottom speaker/vibrator module assembly .....                      | 19        |
| Antenna board .....  | 20        |
| System board .....   | 21        |
| Rear-facing webcam .....   | 23        |

|  |           |
|--|-----------|
| Proximity/light sensor board .....                     | 24        |
| <b>6 Specifications .....</b>                          | <b>26</b> |
| <b>7 Backing up and recovering your data .....</b>     | <b>27</b> |
| Updating apps, widgets, and the operating system ..... | 27        |
| Back up and reset .....                                | 27        |
| Factory data reset .....                               | 28        |
| <b>8 Power cord set requirements .....</b>             | <b>29</b> |
| Requirements for all countries .....                   | 29        |
| Requirements for specific countries and regions .....  | 29        |
| <b>9 Recycling .....</b>                               | <b>31</b> |
| <b>Index .....</b>                                     | <b>32</b> |

---

# 1 Product description

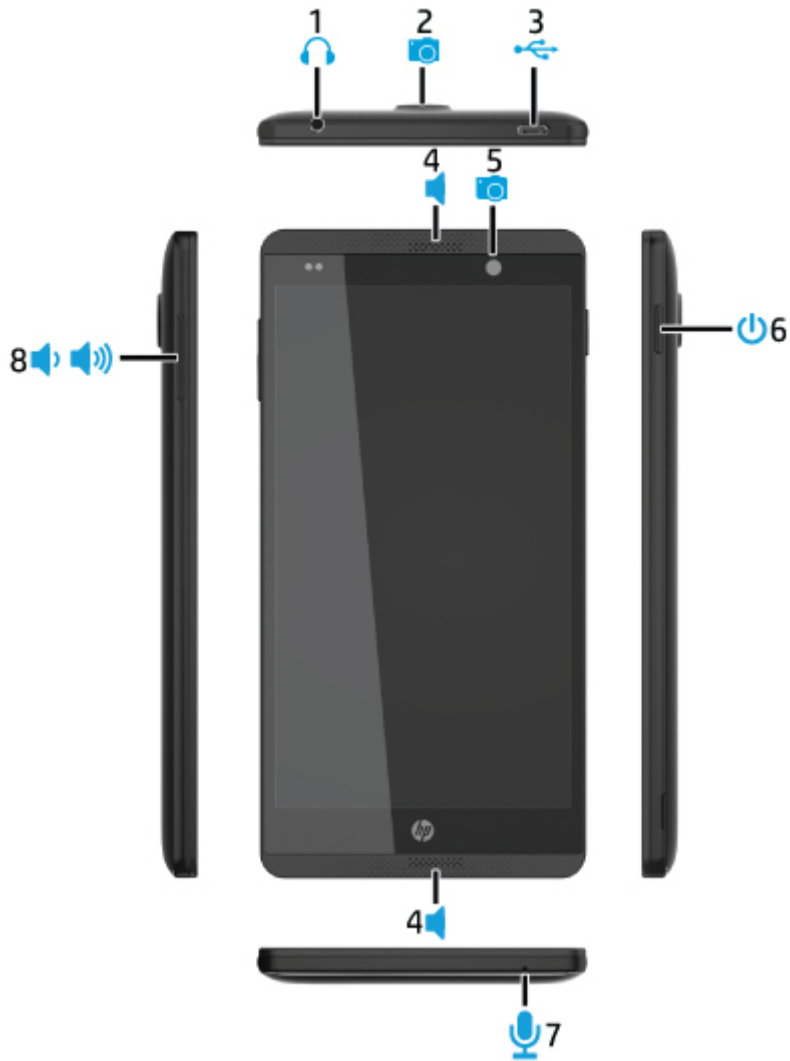
| Category               | Description  |
|------------------------|--|
| <b>Product Name</b>    | HP Slate6 VoiceTab   |
| <b>Processor</b>       | Marvel® PXA1088 1.20-GHz quad core soldered on-chip (SOC) processor  |
| <b>Panel</b>           | 6.0-in, (1280×720), TouchScreen display panel with liquid crystal display (LCD); 16.7 million colors, capacitive touch, 5-finger, bonded, OGS, full lamination   |
| <b>Graphics</b>        | Internal graphics: Marvel GC1000T  |
| <b>Memory</b>          | 1-GB LP-DDR2   |
| <b>Mass storage</b>    | Supports a 16.0-GB embedded MultiMedia Card (eMMC) solid-state drive   |
| <b>Audio and video</b> | Integrated, forward-facing stereo speakers (2), 0.5-W per channel<br><br>One digital microphone<br><br>Stereo FM radio<br><br>5.0-MP, autofocus rear-facing webcam with LED flash<br><br>2.0-MP, fixed-focus front-facing webcam         |
| <b>Sensors</b>         | Accelerometer<br><br>AGPS<br><br>e-Compass<br><br>GPS position<br><br>Gyro<br><br>P/L sensor   |
| <b>Networking</b>      | GSM: 850-/900-/1800-/1900-MHz<br><br>WCDMA: 900-/2100-MHz primary with PCB design to support 850-/2100-MHz<br><br>Phone voice calling optimized<br><br>Dual SIM, dual standby: 1 micro SIM–WCDMA/GSM, 1 mini SIM–GSM (inside back cover) |

---

| Category                   | Description  |
|----------------------------|--|
| <b>Wireless networking</b> | <p><b>Integrated WiFi option:</b> 802.11 b/g/n (2.4 GHz) with 1 antenna</p> <p><b>Integrated Bluetooth option:</b> 3.0 EDR</p> <p><b>Integrated WiDi option:</b> 3G data enable</p>        |
| <b>External expansion</b>  | Integrated micro SD Card Reader expandable to 32-GB  |
| <b>Ports</b>               | <ul style="list-style-type: none"> <li>• Audio: 3.5-mm headphone/microphone combo jack (supports North American-type headset only)</li> <li>• Micro USB 2.0 (supports charging)</li> </ul> |
| <b>Power requirements</b>  | <p>Supports a 3000-mAh, Li-ion battery (non-removable), USB charging battery</p> <p>Supports an HP 5V-2A, USB, AC adapter with duck head DC plug and localized cable plug support</p>      |
| <b>Operating system</b>    | <b>Preinstalled:</b> Android 4.2.2   |
| <b>Serviceability</b>      | <p><b>End user replaceable part:</b></p> <ul style="list-style-type: none"> <li>• HP 5V-2A AC adapter</li> <li>• USB cable</li> <li>• Wired headset</li> </ul>                             |



## 2 External component identification



| Item | Component  | Item | Component             |
|------|--|------|-----------------------|
| (1)  | Audio-out (headphone)/Audio-in (microphone) jack | (5)  | Rear-facing webcamera |
| (2)  | Front-facing webcamera                           | (6)  | Power button          |

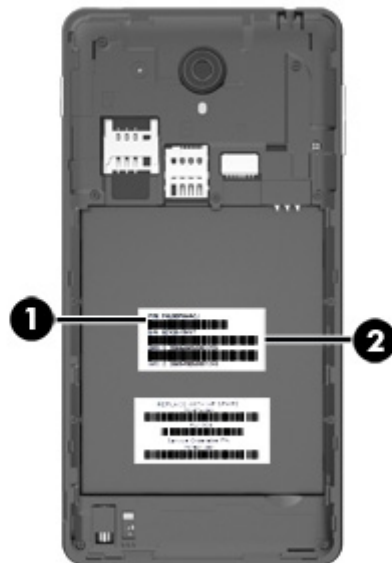
| <b>Item</b> | <b>Component</b> | <b>Item</b> | <b>Component</b>           |
|-------------|------------------|-------------|----------------------------|
| <b>(3)</b>  | Micro USB port   | <b>(7)</b>  | Microphone                 |
| <b>(4)</b>  | Speakers (2)     | <b>(8)</b>  | Volume control buttons (2) |

---

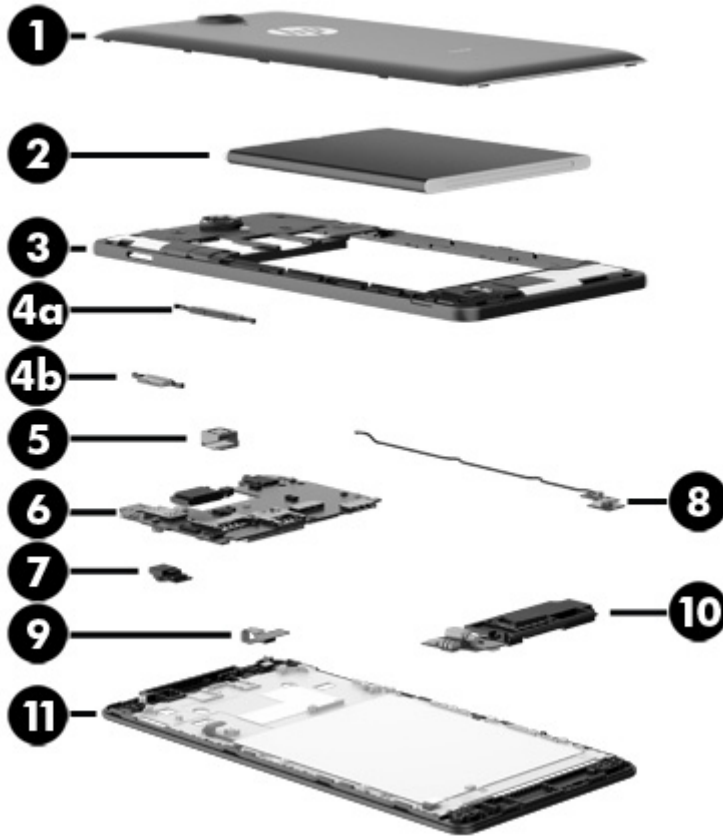
## 3 Illustrated parts catalog

### Locating the serial number, product number, and model number

The product number **(1)** and serial number **(2)** of your tablet are located on the bottom edge of the tablet. You may need this information when you travel internationally or when you contact support.



# Tablet major components



| Item | Component  | Spare part number |
|------|--|-------------------|
| (1)  | <b>Back cover</b>  | 751667-001        |
| (2)  | <b>Battery</b> , 3000-mAh, Li  | 751655-001        |
| (3)  | <b>Middle frame</b>  | 751654-001        |
|      | <b>Hardware Kit</b> , includes:  | 751658-001        |
| (4a) | Power button actuator  |                   |
| (4b) | Volume button actuator   |                   |
| (5)  | <b>5-MP rear-facing webcam</b> (includes cable)  | 751669-001        |
| (6)  | <b>System board</b> equipped with a Marvel PXA1088 1.20-GHz quad core processor, 1.0-GB LP-DDR2 system memory, and a 16-GB eMMC hard drive (includes microphone and top speaker) | 751664-001        |
| (7)  | <b>2-MP front-facing webcam</b> (includes cable and double-sided adhesive)   | 751661-001        |
| (8)  | <b>Antenna board</b> (includes double-sided adhesive and RF cable)   | 751666-001        |
| (9)  | <b>Proximity/light sensor board</b> (includes cable)   | 751665-001        |

| Item | Component   | Spare part number |
|------|---|-------------------|
| (10) | <b>Bottom speaker/vibrator module assembly</b> (includes bottom speaker cables, bottom speaker mount, and double-sided adhesive)                              | 751668-001        |
| (11) | <b>Display panel assembly</b> , 6.0-in, LCD, TouchScreen (includes display panel cable, TouchScreen cable, and bottom speaker/vibrator module assembly cable) | 751674-001        |

## Miscellaneous parts

| Component  | Spare part number |
|--|-------------------|
| <b>AC adapter:</b>   |                   |
| 10-W AC adapter with plug for use only in Europe and South Korea   | 744423-009        |
| 10-W AC adapter with plug for use only in India  | 744423-005        |
| 10-W AC adapter with plug for use only in North America  | 744423-008        |
| 10-W AC adapter with plug for use only in the People's Republic of China   | 744423-006        |
| 10-W AC adapter with plug for use only in the United Kingdom and Singapore   | 744423-003        |
| <b>HP Slate6 VoiceTab</b> equipped with a 6-in., LCD, TouchScreen display, a Marvel PXA1088 1.20-GHz quad core processor, 1.0-GB LP-DDR2 system memory, and a 16-GB eMMC solid-state drive | 751673-001        |
| <b>Screw Kit</b>   | 751659-001        |
| <b>USB extension cable</b>   | 751657-001        |

## Sequential part number listing

| Spare part number | Description  |
|-------------------|--|
| 744423-003        | 10-W AC adapter with duck head plug for use only in the United Kingdom and Singapore |
| 744423-005        | 10-W AC adapter with duck head plug for use only in India                            |
| 744423-006        | 10-W AC adapter with duck head plug for use only in the People's Republic of China   |
| 744423-008        | 10-W AC adapter with duck head plug for use only in North America                    |
| 744423-009        | 10-W AC adapter with duck head plug for use only in Europe and South Korea           |
| 751654-001        | Middle frame   |
| 751655-001        | Battery, 3000-mAh, Li  |
| 751657-001        | USB extension cable  |
| 751658-001        | Hardware Kit (includes the power button actuator and the volume button actuator)     |
| 751659-001        | Screw Kit  |
| 751661-001        | 2-MP front-facing webcam (includes cable and double-sided adhesive)                  |

| <b>Spare part number</b> | <b>Description</b>  |
|--------------------------|---|
| 751664-001               | System board equipped with a Marvel PXA1088 1.20-GHz quad core processor, 1.0-GB LP-DDR2 system memory, and a 16-GB eMMC hard drive (includes microphone and top speaker)           |
| 751665-001               | Proximity/light sensor board (includes cable)   |
| 751666-001               | Antenna board (includes double-sided adhesive and RF cable)   |
| 751667-001               | Back cover  |
| 751668-001               | Bottom speaker/vibrator module assembly (includes bottom speaker cables, bottom speaker mount, and double-sided adhesive)   |
| 751669-001               | 5-MP rear-facing webcam (includes cable)  |
| 751673-001               | HP Slate6 VoiceTab equipped with a 6-in., LCD, TouchScreen display, a Marvel PXA1088 1.20-GHz quad core processor, 1.0-GB LP-DDR2 system memory, and a 16-GB eMMC solid-state drive |
| 751674-001               | 6.0-in, LCD, TouchScreen display panel assembly (includes display panel cable, TouchScreen cable, and bottom speaker/vibrator module assembly cable)                                |

---

# 4 Removal and replacement preliminary requirements

## Tools required


You will need the following tools to complete the removal and replacement procedures:

- Magnetic screw driver
- Phillips P0 screw driver
- Plastic case utility tool

## Service considerations

The following sections include some of the considerations that you must keep in mind during disassembly and assembly procedures.


---

 **NOTE:** As you remove each subassembly from the tablet, place the subassembly (and all accompanying screws) away from the work area to prevent damage.

---

## Plastic parts


---

 **CAUTION:** Using excessive force during disassembly and reassembly can damage plastic parts. Use care when handling the plastic parts. Apply pressure only at the points designated in the maintenance instructions.

---

## Cables and connectors

---

 **CAUTION:** When servicing the tablet, be sure that cables are placed in their proper locations during the reassembly process. Improper cable placement can damage the tablet.

---

Cables must be handled with extreme care to avoid damage. Apply only the tension required to unseat or seat the cables during removal and insertion. Handle cables by the connector whenever possible. In all cases, avoid bending, twisting, or tearing cables. Be sure that cables are routed in such a way that they cannot be caught or snagged by parts being removed or replaced. Handle flex cables with extreme care; these cables tear easily.

# Grounding guidelines

## Electrostatic discharge damage

Electronic components are sensitive to electrostatic discharge (ESD). Circuitry design and structure determine the degree of sensitivity. Networks built into many integrated circuits provide some protection, but in many cases, ESD contains enough power to alter device parameters or melt silicon junctions.

A discharge of static electricity from a finger or other conductor can destroy static-sensitive devices or microcircuitry. Even if the spark is neither felt nor heard, damage may have occurred.

An electronic device exposed to ESD may not be affected at all and can work perfectly throughout a normal cycle. Or the device may function normally for a while, then degrade in the internal layers, reducing its life expectancy.

**⚠ CAUTION:** To prevent damage to the tablet when you are removing or installing internal components, observe these precautions:

Keep components in their electrostatic-safe containers until you are ready to install them.

Before touching an electronic component, discharge static electricity by using the guidelines described in this section.

Avoid touching pins, leads, and circuitry. Handle electronic components as little as possible.

If you remove a component, place it in an electrostatic-safe container.

The following table shows how humidity affects the electrostatic voltage levels generated by different activities.

**⚠ CAUTION:** A product can be degraded by as little as 700 V.

| Typical electrostatic voltage levels |                   |          |         |
|--------------------------------------|-------------------|----------|---------|
| Event                                | Relative humidity |          |         |
|                                      | 10%               | 40%      | 55%     |
| Walking across carpet                | 35,000 V          | 15,000 V | 7,500 V |
| Walking across vinyl floor           | 12,000 V          | 5,000 V  | 3,000 V |
| Motions of bench worker              | 6,000 V           | 800 V    | 400 V   |
| Removing DIPS from plastic tube      | 2,000 V           | 700 V    | 400 V   |
| Removing DIPS from vinyl tray        | 11,500 V          | 4,000 V  | 2,000 V |
| Removing DIPS from Styrofoam         | 14,500 V          | 5,000 V  | 3,500 V |
| Removing bubble pack from PCB        | 26,500 V          | 20,000 V | 7,000 V |
| Packing PCBs in foam-lined box       | 21,000 V          | 11,000 V | 5,000 V |



## Packaging and transporting guidelines

Follow these grounding guidelines when packaging and transporting equipment:

- To avoid hand contact, transport products in static-safe tubes, bags, or boxes.
- Protect ESD-sensitive parts and assemblies with conductive or approved containers or packaging.
- Keep ESD-sensitive parts in their containers until the parts arrive at static-free workstations.
- Place items on a grounded surface before removing items from their containers.
- Always be properly grounded when touching a component or assembly.
- Store reusable ESD-sensitive parts from assemblies in protective packaging or nonconductive foam.
- Use transporters and conveyors made of antistatic belts and roller bushings. Be sure that mechanized equipment used for moving materials is wired to ground and that proper materials are selected to avoid static charging. When grounding is not possible, use an ionizer to dissipate electric charges.

## Workstation guidelines

Follow these grounding workstation guidelines:

- Cover the workstation with approved static-shielding material.
- Use a wrist strap connected to a properly grounded work surface and use properly grounded tools and equipment.
- Use conductive field service tools, such as cutters, screw drivers, and vacuums.
- When fixtures must directly contact dissipative surfaces, use fixtures made only of static-safe materials.
- Keep the work area free of nonconductive materials, such as ordinary plastic assembly aids and Styrofoam.
- Handle ESD-sensitive components, parts, and assemblies by the case or PCM laminate. Handle these items only at static-free workstations.
- Avoid contact with pins, leads, or circuitry.
- Turn off power and input signals before inserting or removing connectors or test equipment.

## Equipment guidelines

Grounding equipment must include either a wrist strap or a foot strap at a grounded workstation.

- When seated, wear a wrist strap connected to a grounded system. Wrist straps are flexible straps with a minimum of one megohm  $\pm 10\%$  resistance in the ground cords. To provide proper ground, wear a strap snugly against the skin at all times. On grounded mats with banana-plug connectors, use alligator clips to connect a wrist strap.
- When standing, use foot straps and a grounded floor mat. Foot straps (heel, toe, or boot straps) can be used at standing workstations and are compatible with most types of shoes or boots. On conductive floors or dissipative floor mats, use foot straps on both feet with a minimum of one megohm resistance between the operator and ground. To be effective, the conductive must be worn in contact with the skin.

The following grounding equipment is recommended to prevent electrostatic damage:

- Antistatic tape
- Antistatic smocks, aprons, and sleeve protectors
- Conductive bins and other assembly or soldering aids
- Nonconductive foam
- Conductive tabletop workstations with ground cords of one megohm resistance
- Static-dissipative tables or floor mats with hard ties to the ground
- Field service kits
- Static awareness labels
- Material-handling packages
- Nonconductive plastic bags, tubes, or boxes
- Metal tote boxes
- Electrostatic voltage levels and protective materials

The following table lists the shielding protection provided by antistatic bags and floor mats.

| <b>Material</b>       | <b>Use</b> | <b>Voltage protection level</b> |
|-----------------------|------------|---------------------------------|
| Antistatic plastics   | Bags       | 1,500 V                         |
| Carbon-loaded plastic | Floor mats | 7,500 V                         |
| Metallized laminate   | Floor mats | 5,000 V                         |

# 5 Removal and replacement procedures

## Tablet component replacement procedures

**⚠ CAUTION:** Tablet components described in this chapter should only be accessed by an authorized service provider. Accessing these parts can damage the tablet and void the warranty.

This chapter provides removal and replacement procedures for authorized service provider only parts.

There are as many as 15 screws that must be removed, replaced, and/or loosened when servicing the tablet. Make special note of each screw size and location during removal and replacement.

### Back cover

| Description   | Spare part number |
|---|-------------------|
| Back cover  | 751667-001        |
| Display panel assembly, 6.0-in, LCD, TouchScreen (includes display panel cable, TouchScreen cable, and bottom speaker/vibrator module assembly cable) | 751674-001        |

Before disassembling the tablet, follow these steps:

1. Turn off the tablet. If you are unsure whether the tablet is off or in Hibernation, turn the tablet on, and then shut it down through the operating system.
2. Disconnect the power from the tablet by unplugging the power cord from the tablet.
3. Disconnect all external devices from the tablet.

Remove the back cover:

1. Place the tablet on a flat surface, display panel side down, with the release notch toward you.

**⚠ CAUTION:** Before positioning the tablet with the display panel facing down, make sure the work surface is clear of tools, screws, and any other foreign objects. Failure to follow this caution can result in damage to the display panel assembly.

2. Use the release notch **(1)** to release the back cover **(2)** from the display panel assembly.

3. Remove the back cover **(3)**.



Reverse this procedure to install the back cover.

## Battery

| Description           | Spare part number |
|-----------------------|-------------------|
| Battery, 3000-mAh, Li | 751655-001        |

Before removing the battery, follow these steps:

1. Turn off the tablet. If you are unsure whether the tablet is off or in Hibernation, turn the tablet on, and then shut it down through the operating system.
2. Disconnect the power from the tablet by unplugging the power cord from the tablet.
3. Disconnect all external devices from the tablet.
4. Remove the back cover (see [Back cover on page 13](#)).

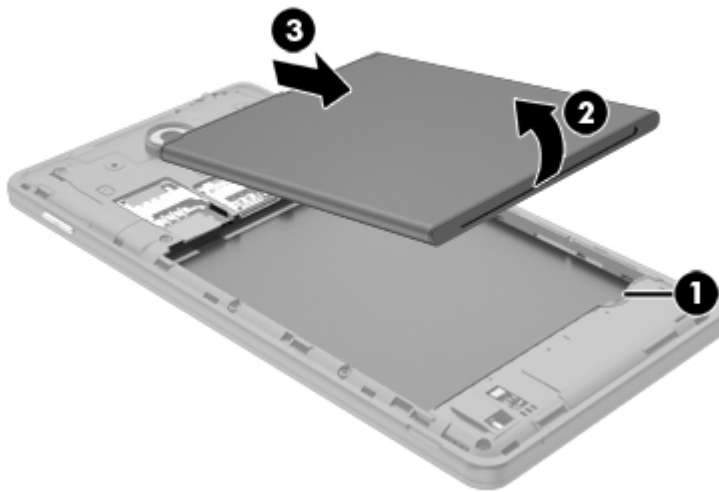
**⚠ WARNING!** To reduce potential safety issues, use only the battery provided with the tablet, a replacement battery provided by HP, or a compatible battery purchased from HP.

**⚠ CAUTION:** Removing a battery that is the sole power source for the tablet can cause loss of information. To prevent loss of information, save your work or shut down the tablet through Windows before removing the battery.

Remove the battery:

1. Use the release notch **(1)** to lift the rear edge **(2)** of the battery.

2. Remove the battery **(3)** by pulling it away from the battery connector.



Reverse this procedure to install the battery.

## Middle frame

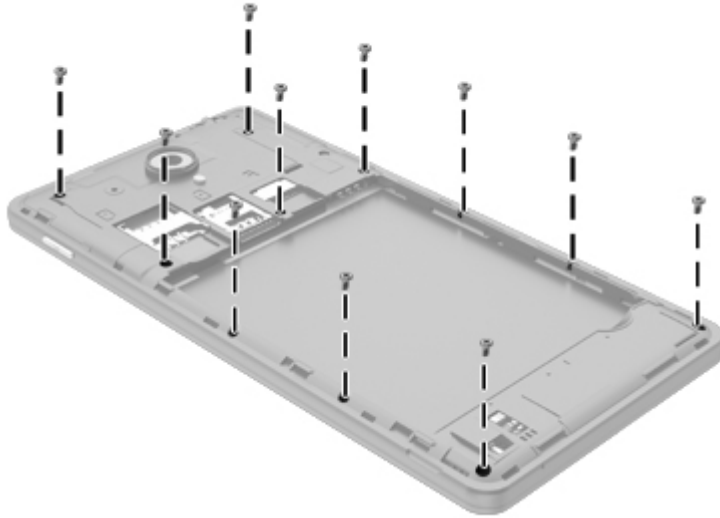
| Description  | Spare part number |
|--------------|-------------------|
| Middle frame | 751654-001        |

Before removing the middle frame, follow these steps:

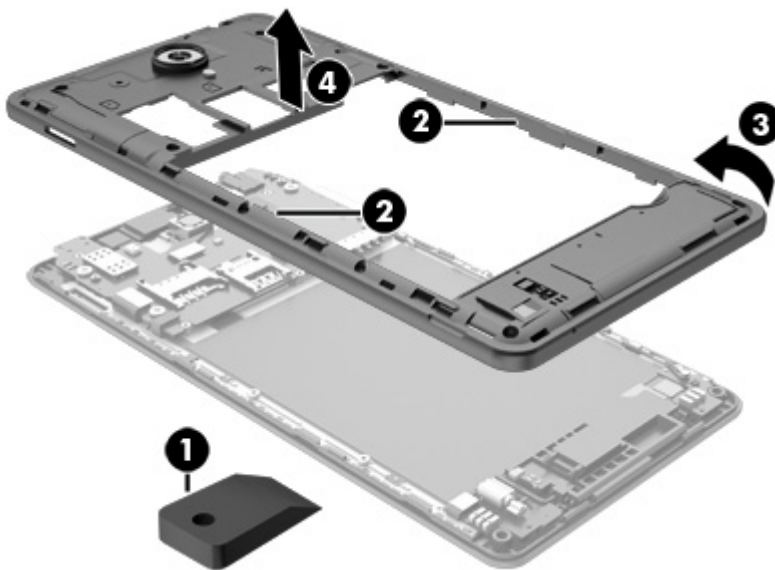
1. Turn off the tablet. If you are unsure whether the tablet is off or in Hibernation, turn the tablet on, and then shut it down through the operating system.
2. Disconnect the power from the tablet by unplugging the power cord from the tablet.
3. Disconnect all external devices from the tablet.
4. Remove the back cover (see [Back cover on page 13](#)).
5. Remove the battery (see [Battery on page 14](#)).

Remove the middle frame:

1. Remove the eleven Phillips PM1 .4x3.2 screws that secure the middle frame to the display panel assembly.




2. Use a case utility tool **(1)** or similar thin plastic tool to carefully detach the thin edges **(2)** of the middle frame from the display panel assembly.
3. Detach the bottom edge **(3)** of the middle frame from the display panel assembly.
4. Remove the middle frame **(4)**.



Reverse this procedure to install the middle frame.

# Power button actuator and volume button actuator

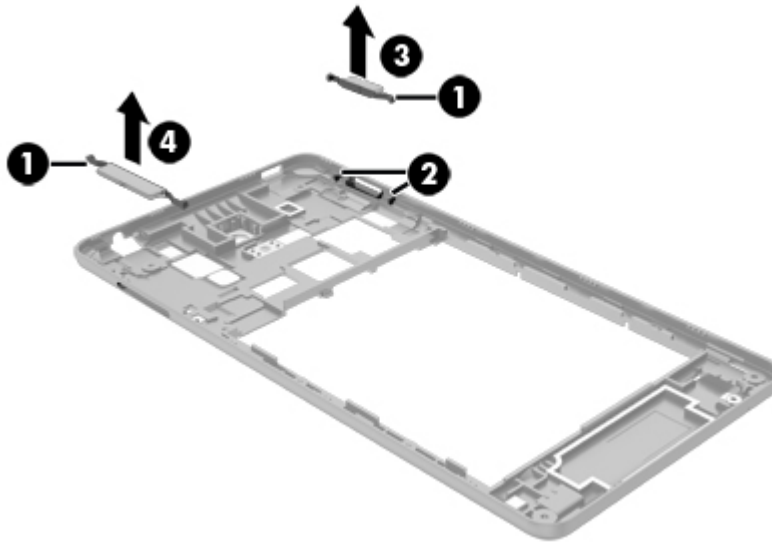
 **NOTE:** The power button actuator and volume button actuator are included in the Hardware Kit, spare part number 751658-001.

Before removing the power button actuator and volume button actuator, follow these steps:

1. Turn off the tablet. If you are unsure whether the tablet is off or in Hibernation, turn the tablet on, and then shut it down through the operating system.
2. Disconnect the power from the tablet by unplugging the power cord from the tablet.
3. Disconnect all external devices from the tablet.
4. Remove the back cover (see [Back cover on page 13](#)).
5. Remove the battery (see [Battery on page 14](#)).
6. Remove the middle frame (see [Middle frame on page 15](#)).

Remove the power button actuator and volume button actuator:

1. Turn the middle frame upside down.
2. Release the flexible tabs **(1)** on the ends of the power button actuator and volume button actuator from the retention clips **(2)** built into the middle frame.
3. Remove the power button actuator **(3)** and volume button actuator **(4)**.



Reverse this procedure to install the power button actuator and volume button actuator.

# Front-facing webcam

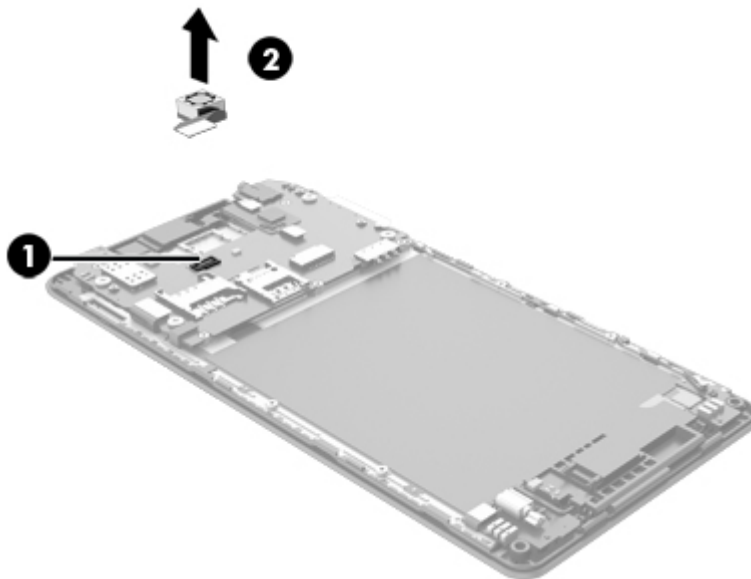
| Description                               | Spare part number |
|---|-------------------|
| 2-MP front-facing webcam (includes cable) | 751661-001        |

Before removing the front-facing webcam, follow these steps:

1. Turn off the tablet. If you are unsure whether the tablet is off or in Hibernation, turn the tablet on, and then shut it down through the operating system.
2. Disconnect the power from the tablet by unplugging the power cord from the tablet.
3. Disconnect all external devices from the tablet.
4. Remove the back cover (see [Back cover on page 13](#)).
5. Remove the battery (see [Battery on page 14](#)).
6. Remove the middle frame (see [Middle frame on page 15](#)).

Remove the front-facing webcam:

1. Disconnect the front-facing webcam cable **(1)** from the system board.
2. Detach the front-facing webcam **(2)** from the display panel assembly. (The front-facing webcam is attached to the display panel assembly with double-sided adhesive.)



3. Remove the front-facing webcam and cable.

Reverse this procedure to install the front-facing webcam.



# Bottom speaker/vibrator module assembly

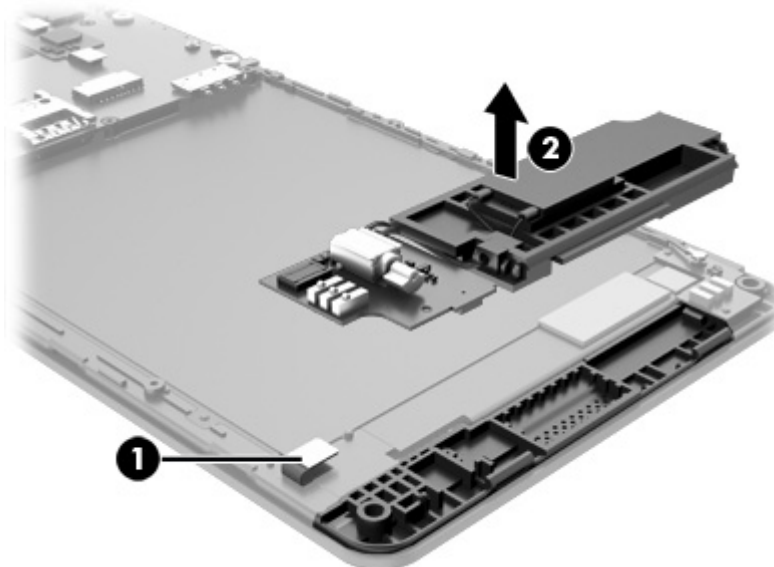
| Description   | Spare part number |
|---|-------------------|
| Bottom speaker/vibrator module assembly (includes bottom speaker cables, bottom speaker mount, and double-sided adhesive) | 751668-001        |

Before removing the bottom speaker/vibrator module assembly, follow these steps:

1. Turn off the tablet. If you are unsure whether the tablet is off or in Hibernation, turn the tablet on, and then shut it down through the operating system.
2. Disconnect the power from the tablet by unplugging the power cord from the tablet.
3. Disconnect all external devices from the tablet.
4. Remove the back cover (see [Back cover on page 13](#)).
5. Remove the battery (see [Battery on page 14](#)).
6. Remove the middle frame (see [Middle frame on page 15](#)).

Remove the bottom speaker/vibrator module assembly:

1. Disconnect the vibrator module cable **(1)** from the vibrator module.
2. Detach the bottom speaker/vibrator module assembly **(2)** from the display panel assembly. (The bottom speaker/vibrator module assembly is attached to the display panel assembly with double-sided adhesive.)



3. Remove the bottom speaker/vibrator module assembly.

Reverse this procedure to install the bottom speaker/vibrator module assembly.

# Antenna board

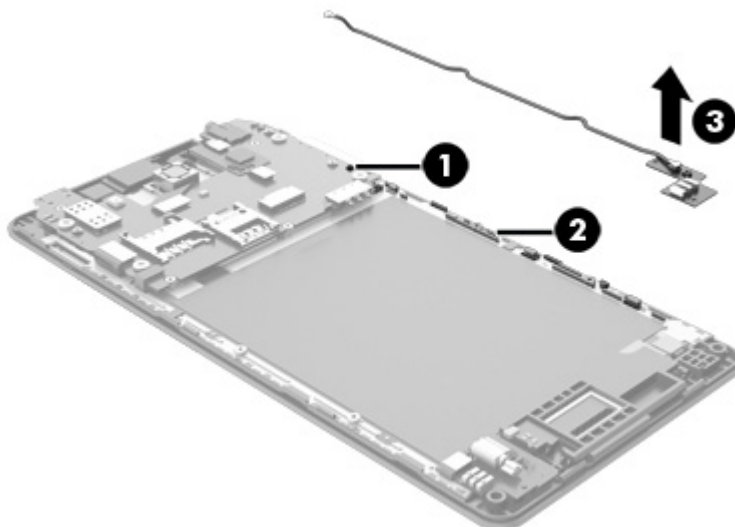
| Description                       | Spare part number |
|-----------------------------------|-------------------|
| Antenna board (includes RF cable) | 751666-001        |

Before removing the antenna board, follow these steps:

1. Turn off the tablet. If you are unsure whether the tablet is off or in Hibernation, turn the tablet on, and then shut it down through the operating system.
2. Disconnect the power from the tablet by unplugging the power cord from the tablet.
3. Disconnect all external devices from the tablet.
4. Remove the back cover (see [Back cover on page 13](#)).
5. Remove the battery (see [Battery on page 14](#)).
6. Remove the middle frame (see [Middle frame on page 15](#)).

Remove the antenna board:

1. Disconnect the antenna board RF cable **(1)** from the terminal on the system board.
2. Release the antenna board RF cable from the routing clips **(2)** and channel built into the display panel assembly.
3. Detach the antenna board **(3)** from the display panel assembly. (The antenna board is attached to the display panel assembly with double-sided adhesive.)



4. Remove the antenna board and cable.

Reverse this procedure to install the antenna board.

# System board

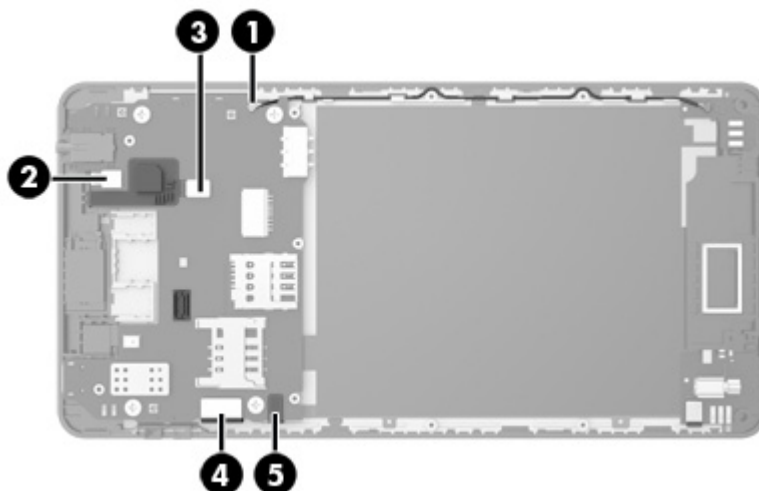
| Description  | Spare part number |
|--|-------------------|
| System board equipped with a Marvel PXA1088 1.20-GHz quad core processor, 1.0-GB LP-DDR2 system memory, and a 16-GB eMMC hard drive (includes top speaker) | 751664-001        |

Before removing the system board, follow these steps:

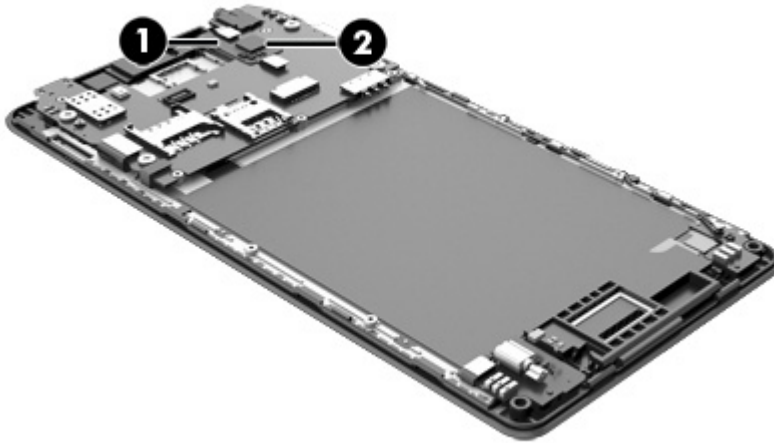
1. Turn off the tablet. If you are unsure whether the tablet is off or in Hibernation, turn the tablet on, and then shut it down through the operating system.
2. Disconnect the power from the tablet by unplugging the power cord from the tablet.
3. Disconnect all external devices from the tablet.
4. Remove the back cover (see [Back cover on page 13](#)).
5. Remove the battery (see [Battery on page 14](#)).
6. Remove the middle frame (see [Middle frame on page 15](#)).

Remove the system board:

1. Disconnect the following cables from the system board:
  - (1) Antenna board RF cable
  - (2) Light sensor board
  - (3) TouchScreen cable
  - (4) Display panel cable
  - (5) Vibrator module cable



2. Detach the TouchScreen cable **(1)** and **(2)** from the display panel assembly. (The TouchScreen cable is attached to the display panel assembly at two contact points with double-sided adhesive.)

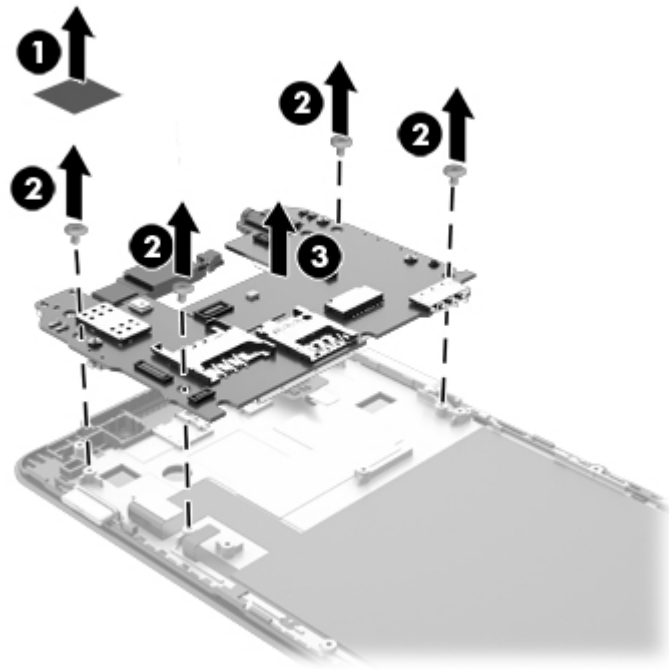


3. Detach the top speaker **(1)** from the display panel assembly. (The top speaker is attached to the display panel assembly with double-sided adhesive.)
4. Detach the rear-facing webcamera **(2)** from the display panel assembly. (The rear-facing webcamera is attached to the display panel assembly with double-sided adhesive.)



5. Remove the warranty sticker **(1)** that covers the system board retention screw.
6. Remove the four Phillips PM1.4×3.0 screws **(2)** that secure the system board to the display panel assembly.

7. Remove the system board (3).



Reverse this procedure to install the system board.

## Rear-facing webcam

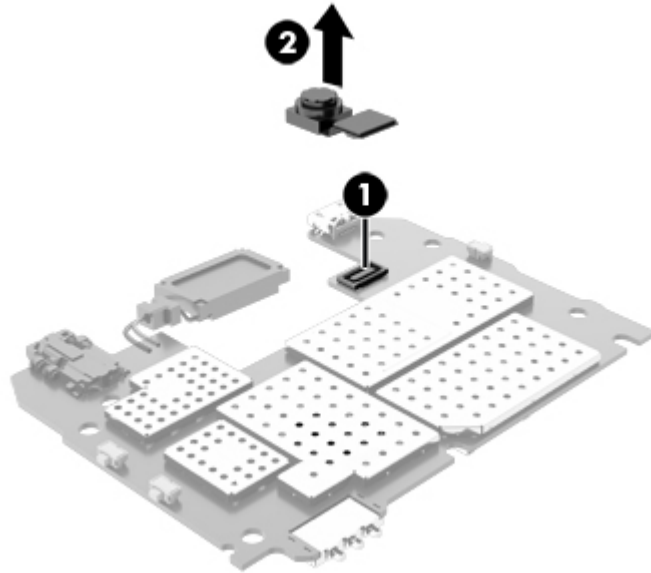
| Description                         | Spare part number |
|-------------------------------------|-------------------|
| Rear-facing webcam (includes cable) | 743818-001        |

Before removing the rear-facing webcam, follow these steps:

1. Turn off the tablet. If you are unsure whether the tablet is off or in Hibernation, turn the tablet on, and then shut it down through the operating system.
2. Disconnect the power from the tablet by unplugging the power cord from the tablet.
3. Disconnect all external devices from the tablet.
4. Remove the back cover (see [Back cover on page 13](#)), and then remove the following components:
  - a. Battery (see [Battery on page 14](#))
  - b. Middle frame (see [Middle frame on page 15](#))
  - c. System board (see [System board on page 21](#))

Remove the rear-facing webcam:

1. Turn the system board upside down.
2. Disconnect the rear-facing webcam cable (1) from the system board.
3. Remove the rear-facing webcam (2) and cable.



Reverse this procedure to install the rear-facing webcam.

## Proximity/light sensor board

| Description                                   | Spare part number |
|---|-------------------|
| Proximity/light sensor board (includes cable) | 751665-001        |


Before removing the proximity/light sensor board, follow these steps:

1. Turn off the tablet. If you are unsure whether the tablet is off or in Hibernation, turn the tablet on, and then shut it down through the operating system.
2. Disconnect the power from the tablet by unplugging the power cord from the tablet.
3. Disconnect all external devices from the tablet.
4. Remove the back cover (see [Back cover on page 13](#)), and then remove the following components:
  - a. Battery (see [Battery on page 14](#))
  - b. Middle frame (see [Middle frame on page 15](#))
  - c. System board (see [System board on page 21](#))

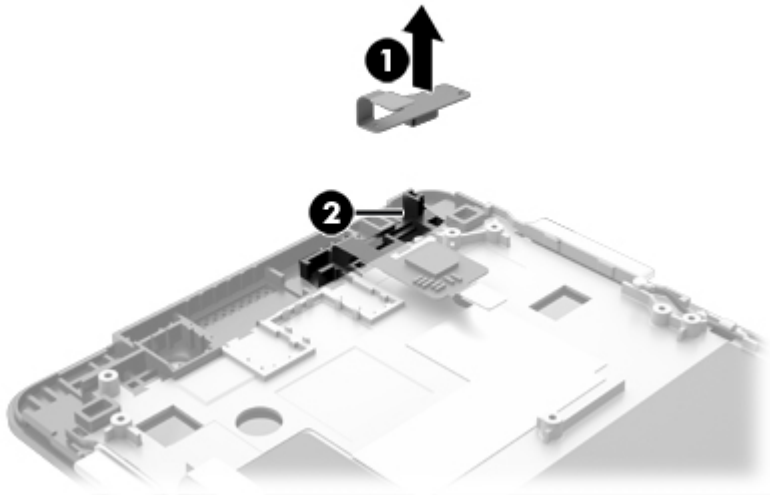
Remove the proximity/light sensor board:

- ▲ Remove the proximity/light sensor board **(1)** from the retention mold built into the display panel assembly.

---

 **NOTE:** The display panel assembly also contains alignment pins **(2)** that ensure proper installation of the proximity/light sensor board.

---



Reverse this procedure to install the proximity/light sensor board.

# 6 Specifications

|   | Metric                   | U.S.                |
|---|--------------------------|---------------------|
| <b>Dimensions</b>   |                          |                     |
| Width   | <b>8.32 cm</b>           | 3.28 in             |
| Depth   | <b>0.90 cm</b>           | 0.35 in             |
| Height  | <b>16.51 cm</b>          | 6.50 in             |
| Weight (lowest weight configuration)  | <b>0.16 g</b>            | 0.35 lb             |
| <b>Input power</b>  |                          |                     |
| The voice tablet operates on DC power, which can be supplied by an AC or a DC power source. The AC power source must be rated at 100–240 V, 50/60 Hz, 0.3-1.0 A.  |                          |                     |
| <b>NOTE:</b> The voice tablet can operate on DC power using an industry-standard micro-A or micro-B USB cable. The HP adapter included with your voice tablet is recommended for charging the voice tablet. |                          |                     |
| <b>Temperature</b>  |                          |                     |
| Operating   | <b>5°C to 35°C</b>       | 41°F to 95°F        |
| Nonoperating  | <b>-20°C to 60°C</b>     | -4°F to 140°F       |
| <b>Relative humidity</b> (non-condensing)   |                          |                     |
| Operating   | 10% to 90%               |                     |
| Nonoperating  | 5% to 95%                |                     |
| <b>Maximum altitude</b> (unpressurized)   |                          |                     |
| Operating   | <b>-15 m to 3,048 m</b>  | -50 ft to 10,000 ft |
| Nonoperating  | <b>-15 m to 12,192 m</b> | -50 ft to 40,000 ft |
| <b>NOTE:</b> Applicable product safety standards specify thermal limits for plastic surfaces. The device operates well within this range of temperatures.   |                          |                     |



---

# 7 Backing up and recovering your data



## Updating apps, widgets, and the operating system

HP recommends that you update your apps, widgets, and the operating system on a regular basis to the latest versions. Updates can resolve issues and bring new features and options to your tablet. Technology is always changing, and updating apps, widgets, and the operating system allows your tablet to run the latest technology available. For example, older apps and widgets might not work well with the most recent operating system.

Go to the Google Play store to download the latest versions of HP and third-party apps and widgets. The operating system will download system updates automatically and notify you when it is ready to install these updates. If you want to update the operating system manually, go to <http://www.hp.com/support>.

## Back up and reset

You can set preferences for backing up and restoring your data in case of loss.

1. Touch , and then touch .
2. Under **PERSONAL**, touch **Back up & reset**.
3. Under **BACKUP & RESTORE**, select one or more of the following:
  - **Back up my data**—Select the check box to enable backing up app data, Wi-Fi passwords, and other settings to Google servers.
  - **Backup account**—Select a Google account for backing up data.
  - **Automatic restore**—Select the check box to enable backed up settings and data to be restored when an app is reinstalled.

## Factory data reset

To reset all settings and delete all data on the device:

1. Touch , and then touch .
2. Under **PERSONAL**, touch **Back up & reset**.
3. Under **PERSONAL DATA**, select **Factory data reset**, and then follow the on-screen instructions.

# 8 Power cord set requirements

The wide-range input feature of the tablet permits it to operate from any line voltage from 100 to 120 volts AC, or from 220 to 240 volts AC.

The 3-conductor power cord set included with the tablet meets the requirements for use in the country or region where the equipment is purchased.

Power cord sets for use in other countries and regions must meet the requirements of the country or region where the tablet is used.

## Requirements for all countries

The following requirements are applicable to all countries and regions:

- The length of the power cord set must be at least 1.0 m (3.3 ft) and no more than 2.0 m (6.5 ft).
- All power cord sets must be approved by an acceptable accredited agency responsible for evaluation in the country or region where the power cord set will be used.
- The power cord sets must have a minimum current capacity of 10 amps and a nominal voltage rating of 125 or 250 V AC, as required by the power system of each country or region.
- The appliance coupler must meet the mechanical configuration of an EN 60 320/IEC 320 Standard Sheet C13 connector for mating with the appliance inlet on the back of the tablet.

## Requirements for specific countries and regions

| Country/region | Accredited agency | Applicable note number |
|----------------|-------------------|------------------------|
| Australia      | EANSW             | 1                      |
| Austria        | OVE               | 1                      |
| Belgium        | CEBC              | 1                      |
| Canada         | CSA               | 2                      |
| Denmark        | DEMKO             | 1                      |
| Finland        | FIMKO             | 1                      |
| France         | UTE               | 1                      |

| Country/region                 | Accredited agency | Applicable note number |
|--------------------------------|-------------------|------------------------|
| Germany                        | VDE               | 1                      |
| Italy                          | IMQ               | 1                      |
| Japan                          | METI              | 3                      |
| The Netherlands                | KEMA              | 1                      |
| Norway                         | NEMKO             | 1                      |
| The People's Republic of China | COC               | 5                      |
| South Korea                    | EK                | 4                      |
| Sweden                         | CEMKO             | 1                      |
| Switzerland                    | SEV               | 1                      |
| Taiwan                         | BSMI              | 4                      |
| The United Kingdom             | BSI               | 1                      |
| The United States              | UL                | 2                      |

1. The flexible cord must be Type HO5VV-F, 3-conductor, 1.0-mm<sup>2</sup> conductor size. Power cord set fittings (appliance coupler and wall plug) must bear the certification mark of the agency responsible for evaluation in the country or region where it will be used.
2. The flexible cord must be Type SPT-3 or equivalent, No. 18 AWG, 3-conductor. The wall plug must be a two-pole grounding type with a NEMA 5-15P (15 A, 125 V) or NEMA 6-15P (15 A, 250 V) configuration.
3. The appliance coupler, flexible cord, and wall plug must bear a "T" mark and registration number in accordance with the Japanese Dentori Law. The flexible cord must be Type VCT or VCTF, 3-conductor, 1.00-mm<sup>2</sup> conductor size. The wall plug must be a two-pole grounding type with a Japanese Industrial Standard C8303 (7 A, 125 V) configuration.
4. The flexible cord must be Type RVV, 3-conductor, 0.75-mm<sup>2</sup> conductor size. Power cord set fittings (appliance coupler and wall plug) must bear the certification mark of the agency responsible for evaluation in the country or region where it will be used.
5. The flexible cord must be Type VCTF, 3-conductor, 0.75-mm<sup>2</sup> conductor size. Power cord set fittings (appliance coupler and wall plug) must bear the certification mark of the agency responsible for evaluation in the country or region where it will be used.

---

## 9 Recycling

When a non-rechargeable or rechargeable battery has reached the end of its useful life, do not dispose of the battery in general household waste. Follow the local laws and regulations in your area for battery disposal.

HP encourages customers to recycle used electronic hardware, HP original print cartridges, and rechargeable batteries. For more information about recycling programs, see the HP Web site at <http://www.hp.com/recycle>.

---

# Index

- A**
  - AC adapter, spare part numbers 7
  - antenna board
    - removal 20
    - spare part number 6, 8, 20
  - audio, product description 1
  - audio-in jack 3
  - audio-out jack 3
- B**
  - back cover
    - removal 13
    - spare part number 6, 8, 13
  - battery
    - removal 14
    - spare part number 6, 7, 14
  - bottom speaker
    - removal 19
    - spare part number 7, 8, 19
  - bottom speaker/vibrator module assembly
    - removal 19
    - spare part number 7, 8, 19
  - buttons
    - power 3
    - volume control 4
- C**
  - cables, service considerations 9
  - connectors, service considerations 9
- D**
  - display panel assembly, spare part number 7, 8, 13
  - display panel, product description 1
- E**
  - electrostatic discharge 10
  - equipment guidelines 12
  - external expansion, product description 2
- F**
  - front-facing webcam
    - location 3
    - removal 18
    - spare part number 6, 7, 18
- G**
  - graphics, product description 1
  - grounding guidelines 10
  - guidelines
    - equipment 12
    - grounding 10
    - packaging 11
    - transporting 11
    - workstation 11
- H**
  - Hardware Kit
    - contents 6
    - spare part number 6, 7, 17
  - headphone jack 3
- J**
  - jacks
    - audio-in 3
    - audio-out 3
    - headphone 3
    - microphone 3
- M**
  - mass storage device, product description 1
- memory module, product description 1
- microphone
  - location 4
  - product description 1
- microphone jack 3
- middle frame
  - removal 15
  - spare part number 6, 7, 15
- model name 1
- N**
  - networking, product description 1
- O**
  - operating system, product description 2
- P**
  - packaging guidelines 11
  - plastic parts, service considerations 9
  - ports, product description 2
  - power button 3
  - power button actuator
    - removal 17
    - spare part number 17
  - power cord, set requirements 29
  - power requirements, product description 2
  - processor, product description 1
  - product description
    - audio 1
    - display panel 1
    - external expansion 2
    - graphics 1
    - mass storage 1
    - memory module 1
    - microphone 1

- networking 1
- operating system 2
- ports 2
- power requirements 2
- processors 1
- product name 1
- sensor 1
- serviceability 2
- video 1
- wireless networking 2
- product name 1
- proximity/light sensor board
  - removal 24
  - spare part number 6, 8, 24

## R

- rear-facing webcamera
  - location 3
  - removal 23
  - spare part number 6, 8, 23

## S

- Screw Kit, spare part number 7
- sensor, product description 1
- service considerations
  - cables 9
  - connectors 9
  - plastic parts 9
- serviceability, product description 2
- speakers
  - location 4
  - removal 19
  - spare part number 7, 8, 19
- system board
  - removal 21
  - spare part number 6, 8, 21

## T

- tablet
  - major components 6
  - spare part number 7, 8
  - specifications 26
- tools required 9
- transporting guidelines 11

## U

- USB extension cable, spare part number 7
- USB port 4

## V

- vibrator module
  - removal 19
  - spare part number 7, 8, 19
- video, product description 1
- volume button actuator
  - removal 17
  - spare part number 17
- volume control buttons 4

## W

- webcamera
  - removal 18, 23
  - spare part numbers 6, 7, 8, 18, 23
- wireless networking, product description 2
- workstation guidelines 11