

Illustrated parts & service map

HP ProOne 400 G1 All-in-One Business PC



© 2014 Hewlett-Packard Development Company, L.P. The information contained herein is subject to change without notice. HP shall not be liable for technical or editorial errors or omissions contained herein.

Document Number 754628-001.

1st Edition March 2014.

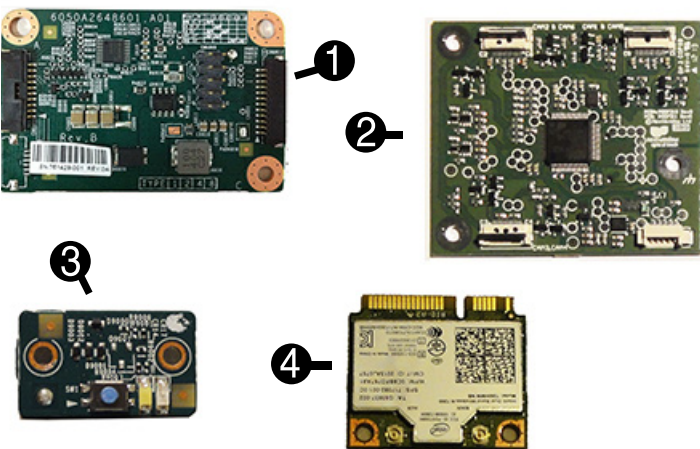


Key specifications

Processor type	Intel® Core i7, i5, i3, Pentium, Celeron
RAM type	Non-ECC, DDR3 SDRAM, 1600 MT/s, SODIMM, 2 slots
Maximum RAM	16 GB
Expansion slots	(1) Mini PCIe half-length (used by wireless LAN module)
Chipset	Intel H81 Express
Bays	(1) 3.5" internal that supports (1) 3.5" or 2.5" hard drive (1) 5.25" external that supports (1) slim line optical drive
I/O interfaces	Side: (2) USB 3.0 ports, including (1) fast charging port; microphone; headphone; SD card reader (optional) Rear: (4) USB 2.0 ports; DisplayPort video port; RJ-45 Gigabit Ethernet network connector; RS-232 serial port; 3.5mm stereo line out jack
Display	21.5-inch (1920 x 1080) diagonal widescreen WLED backlit anti-glare
Operating systems	Windows 8.1 Windows 7 FreeDOS Novell SUSE Linux Enterprise Desktop 11

Spare parts

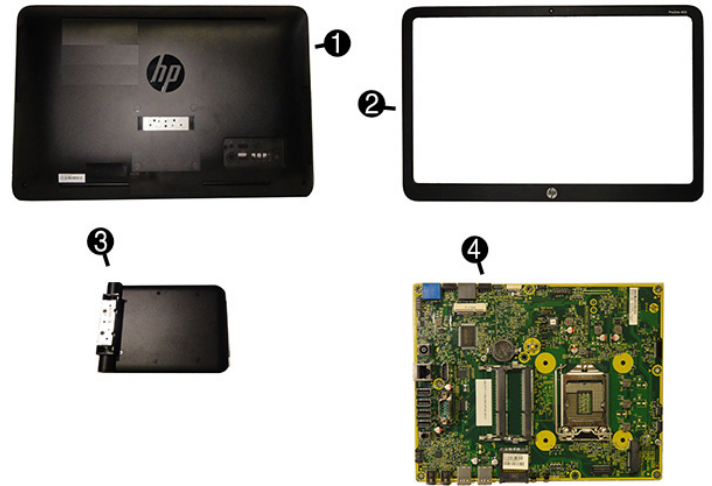
Standard and optional boards



1	Converter board	763205-001
2	Touch controller board (included with display panel kit, 763203-001)	not spared separately
3	Power button board (includes insulator)	764962-001
4	WLAN module, 802.11 a/b/g/n 2x2	767424-001
*	HP WLAN 802.11 a/b/g/n + Bluetooth 4.0	697316-001
*	Webcam	763215-001

*Not shown

System unit



1	Rear cover	764957-001
2	Front bezel for use in models with a webcam	764958-001
*	Front bezel for use in models without a webcam	764959-001
3	Stand assembly	763209-001
*	Power supply, 120W	740243-001
*	Raw display panel, WLED (includes touch controller board)	763203-001

System boards (include thermal material; callouts illustrated on last page)

4	System board for use in models without Windows 8	737340-001
*	System board for use in models with Windows Standard	737340-501
*	System board for use in models with Windows Professional	737340-601

Memory modules

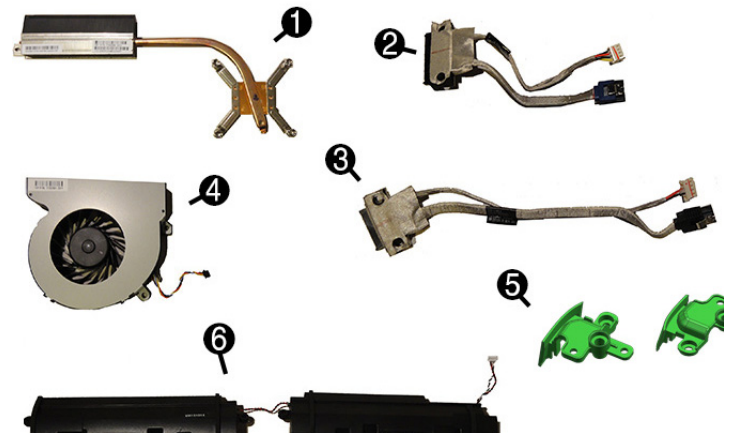
*	8-GB	689374-001
*	4-GB	689373-001
*	2-GB	689372-001

Processors (include thermal material)

*	Intel Core i7-4770T, 2.5 GHz, 8-MB L3 cache	758446-001
*	Intel Core i7-4765T, 2.0 GHz, 8-MB L3 cache	754000-001
*	Intel Core i5-4670T, 2.3 GHz, 6-MB L3 cache	753999-001
*	Intel Core i5-4570T, 2.9 GHz, 4-MB L3 cache	753998-001
*	Intel Core i3-4330T, 3.0 GHz, 4-MB L3 cache	753995-001
*	Intel Core i3-4130T, 2.9 GHz, 3-MB L3 cache	757416-001
*	Intel Pentium G3420T, 2.7-GHz, 3 MB cache	763217-001
*	Intel Pentium G3220T, 2.6-GHz, 3 MB cache	763216-001
*	Intel Celeron G1820T, 2.4-GHz, 2 MB cache	753994-001

*Not shown

Miscellaneous parts



1	Heat sink (thermal module)	763213-001
2	Hard drive cable (data and power assembly)	763122-001
3	Optical drive cable (data and power assembly)	763121-001
4	Fan	763214-001
5	Foot cover (includes left and right covers)	764961-001
6	Speakers (left and right)	763212-001
*	Card reader cover (for models without a media card reader)	764960-001
*	HP ultraslim keyed cable lock	703372-001
*	Hard drive removable frame carrier	732060-001
*	Optical drive bezel	763207-001
*	Hard drive isolation grommet	763210-001
*	Rubber feet	763211-001
*	Mouse, washable	724795-001
*	Mouse, USB, optical	537749-001
*	Mouse, USB, laser	674318-001

*Not shown

Cables (not illustrated)

*	Power button board cable	763126-001
*	Backlight cable	763129-001
*	Touch control cable	763124-001
*	Converter board cable	763123-001
*	LVDS (display) cable	763127-001
*	Webcam cable	763128-001
*	Antenna kit	763125-001
*	Adapter, DisplayPort to VGA	632484-001
*	Adapter, DisplayPort to DVI	662723-001
*	Adapter, DisplayPort to HDMI	617450-001
*	DisplayPort cable	487562-001

*Not shown

Keyboards (not illustrated)

USB Wireless with mouse and dongle Washable* Smart card, CCID		724720-xx1 730323-xx1 700510-xx1 701671-xx1	
Arabic	-17x	Japanese	-29x
F Arabic	-DEx	LA Spanish	-16x
BHCSY	-B4x	Norwegian	-09x
Belgian	-18x	People's Republic of China	-AAx
Brazilian Portuguese	-20x	Portuguese	-13x
Bulgaria	-26x	Romanian	-27x
Czech and Slovakian	-22x -CG1	Russian	-25x
Danish	-08x	Slovenian	-23x
French	-05x	South Korea	-K Dx
French Canadian	-12x	Spanish	-07x
German	-04x	Swedish	-10x
Greek	-15x	Swiss	-11x
Hebrew	-BBx	Taiwanese	-ABx
Hungarian	-21x	Thai	-28x
India	-D6x	Turkish	-14x
International English	-L3x	U.S.	-00x
Italian	-06x	U.K.	-03x

* -001, -121, -161, -201 only

Mass storage devices (not illustrated)

Blu-ray writer (BD-RE) drive (includes bezel)	719157-001
DVD-ROM drive (includes bezel)	608394-001
DVD±RW drive (includes bezel)	657958-001
2 TB, 7200 rpm hard drive	616608-001
1 TB hard drive	621418-001
1 TB hard drive, 2.5-inch, hybrid SSD, self-encrypting (SED)	724937-001
500 GB, 7200 rpm hard drive, 3.5-inch	621421-001
500 GB, 7200 rpm hard drive, 2.5-inch, self-encrypting (SED)	696442-001
500 GB, 7200 rpm hard drive, 2.5-inch	686217-001
500 GB, 7200 rpm hard drive, 2.5-inch	754078-001
500 GB hard drive, 2.5-inch, hybrid SSD, self-encrypting (SED)	724938-001
320 GB, 7200 rpm hard drive	639135-001
320 GB, 7200 rpm hard drive, 2.5-inch	754077-001
256 GB Solid State Drive (SSD), self-encrypting (SED)	746141-001
180 GB Solid State Drive (SSD), MLC	754076-001
128 GB Solid State Drive (SSD), self-encrypting (SED)	746140-001
120 GB Solid State Drive (SSD), MLC	756459-001

Diagnostic LEDs

LED	Color	LED activity	State/Message
Power	White	On	Computer on
Power	White	1 blink every 2 seconds	Normal Suspend Mode
Power	Red	2 blinks every second followed by a 2 second pause	CPU thermal shutdown
Power	Red	3 blinks, 1 blink every second followed by a 2 second pause	Processor not installed
Power	Red	4 blinks, 1 blink every second followed by a 2 second pause	Power failure (power supply overload)
Power	Red	5 blinks, 1 blink every second followed by a 2 second pause	Pre-video memory error
Power	Red	6 blinks, 1 blink every second followed by a 2 second pause	Pre-video graphics error
Power	Red	7 blinks, 1 blink every second followed by a 2 second pause	System board failure (ROM)
Power	Red	8 blinks, 1 blink every second followed by a 2 second pause	Invalid ROM based on Checksum
Power	Red	9 blinks, 1 blink every second followed by a 2 second pause	System powers on but is unable to boot
Power	Red	11 blinks, 1 blink every second followed by a 2 second pause	Current processor does not support a feature previously enabled.
Power	Red	12 blinks, 1 blink every second followed by a 2 second pause	MXM thermal shutdown
none	none	System does not power on and LEDs are not flashing	System unable to power on

Common POST error messages

Screen message	Probable cause	Recommended action
101-Option ROM Error	System ROM checksum error.	1. Verify ROM, reflash if required 2. Clear CMOS memory, reboot 3. Replace system board
103-System Board Failure	DMA, timers	1. Clear CMOS memory. 2. Replace system board.
164-Memory Size Error and 201-Memory Error	Incorrect memory configuration	1. Run Setup (F10). 2. Check DIMMs for proper seating, type, compatibility. 3. Remove DIMMs singularly and reboot to isolate faulty DIMM. 4. Replace system board.
213-Incompatible Memory Module in Memory Socket(s) X,X	A memory module in memory socket identified in the error message is missing critical SPD information, or is incompatible with the chipset.	1. Verify proper memory module type. 2. Try another memory socket. 3. Replace DIMM with a module conforming to the SPD standard.
214-DIMM Configuration Warning	Populated DIMM configuration is not optimized	1. Check DIMMs for proper seating, type, compatibility. 2. Rearrange the DIMMs so that each channel has the same amount of memory.
219-ECC Memory Module Detected ECC Modules not supported on this Platform	Recently added memory module(s) support ECC memory error correction.	If additional memory was recently added, remove it to see if the problem remains.
301-, 304-Keyboard error	Keyboard failure.	Check kybd connection or keys. Check connector for bent or missing pins. Replace kybd. If 304, possible system board problem.
510-Flash Screen Image Corrupted	Flash Screen image has errors.	Reflash the system ROM with the latest BIOS image.
912-Computer Cover Has Been Removed Since Last System Startup	Computer cover was removed since last system startup.	No action required.
1720-SMART Hard Drive Detects Imminent Failure	Hard drive is about to fail.	1. Determine if hard drive is giving correct error message. Use F2 Diagnostics to run DPS Self-test. 2. Apply hard drive firmware patch if applicable. 3. Back up contents and replace hard drive.
1796-SATA Cabling Error	One or more SATA devices are improperly attached. For optimal performance, the SATA 0 and SATA 1 connectors must be used before SATA 2 and SATA 3.	Ensure SATA connectors are used in ascending order. For one device, use SATA 0. For two devices, use SATA 0 and SATA 1. For three devices, use SATA 0, SATA 1, and SATA 2.
1801-Microcode Patch Error	Processor not supported by ROM BIOS.	1. Upgrade BIOS to proper version. 2. Change the processor.
2200-PMM Allocation Error during MEBx Download	Memory error during POST execution of the Management Engine (ME) BIOS Extensions option ROM	1. Reboot the computer. 2. Unplug the power cord, re-seat the memory modules, and reboot the computer. 3. If the memory configuration was recently changed, unplug the computer, restore the original memory configuration, and reboot the computer. 4. If the error persists, replace the system board.
Invalid Electronic Serial Number	Electronic serial number is missing.	Enter the correct serial number in Computer Setup.
Network Server Mode Active and No Keyboard Attached	Keyboard failure while Network Server Mode enabled.	1. Reconnect keyboard with computer turned off. 2. Check connector for bent or missing pins. 3. Ensure that none of the keys are depressed. 4. Replace keyboard.

System setup and boot

Access the Setup Utility during computer boot by pressing the **F10** key. If you do not press **F10** at the appropriate time, you must restart the computer and again press **F10** when the monitor light turns green. NOTE: Not all settings are available for all models.

Computer Setup Menu

Heading	Option/Description	
File	System Information - Lists the following main system specifications: <ul style="list-style-type: none"> Product name Manufacturer SKU number Processor type/speed/stepping Installed memory size/speed/ch Integrated MAC Address Chassis serial number Asset tracking number System board ID System board CT Number BIOS 	
	About - Displays copyright notice.	
	Set Time and Date - Allows you to set system time and date.	
	Flash System ROM - Allows you to update the system ROM with a BIOS image file located on removable media.	
	Replicated Setup - Allows you to save or restore system configuration to/from a USB flash drive.	
	Default Setup - Allows you to save current settings as default or restore factory settings as default.	
	Apply Defaults and Exit - Applies the selected default settings and clears any established passwords.	
	Ignore Changes and Exit - Exits Computer setup without saving changes.	
	Save Changes and Exit - Saves changes to system configuration or default settings and exits Computer Setup.	
	Storage	Device Configuration - Lists all installed BIOS-controlled storage devices. The following options are available: <ul style="list-style-type: none"> CD-ROM Hard Disk Diskette (external USB)
	Storage Options - Allows you to set: <ul style="list-style-type: none"> SATA Emulation - Choose how the SATA controller and devices are accessed by the OS. SATA Emulation choices are AHCI or IDE. Removable Media Boot - Enables/disables ability to boot the system from removable media. 	
	Boot Order - Specify boot order for UEFI and legacy boot sources. Also specify hard drive boot order. <ul style="list-style-type: none"> Shortcut to Temporarily Override Boot Order 	
Security	Setup Password - Set and enable the setup (Admin) password.	
	Power-On Password - Set and enable power-on password.	
	Password Options - Allows to you enable/disable: <ul style="list-style-type: none"> Lock Legacy Resources Setup Browse Mode Password prompt on F9, F11, & F12 Network Server Mode Stringent Password 	
	Device Security - Set Device Available/Device Hidden for: system audio, network controller, and SATA ports.	
	USB Security - Set Device Available/Device Hidden for front USB ports, rear USB ports, accessory USB ports.	
	Slot Security - Disable any PCI, or PCIe slots.	
	Network Boot - Enables/disables boot from OS (NIC models only).	
	System IDs - Allows you to update asset tag, ownership tag, UUID, keyboard locale setting.	
	Master Boot Record Security - enables/disables MBR.	
	System Security - Allows you to set: <ul style="list-style-type: none"> Data Execution Prevention (enable/disable) Virtualization Technology (VTx) (enable/disable) Virtualization Technology/Directed IO (VTd) (enable/disable) 	
	DriveLock Security - Allows you to assign or modify a master or user password for hard drives.	
	Secure Boot Configuration (Windows 8 only) <ul style="list-style-type: none"> Legacy Support (enable/disable) Secure Boot (enable/disable) Key Management (enable/disable) Fast Boot (enable/disable) 	
	Power	OS Power Management - Allows you to enable/disable Runtime Power Management, Idle Power Savings, Unique Sleep State Blink Rates.
		Hardware Power Management - Enable/disable SATA power management, S5 maximum power savings., PCI slots, network controller, USB 3.0 controller
	Thermal - Control minimum fan speed.	

Advanced	Power-On Options - Allows you to set: <ul style="list-style-type: none"> POST mode (QuickBoot, Clear Memory, FullBoot, or FullBoot Every x Days) POST messages (enable/disable) Press the ESC key for Startup Menu (enable/disable) Option ROM Prompt (enable/disable) After Power Loss (off/on/previous state) POST Delay (none, 5, 10, 15, 20, or 60 seconds) Remote Wakeup Boot Source (remote server/local hard drive) Factory Recovery Boot Support (enable/disable) Bypass F1 Prompt on Configuration Changes (enable/disable) POST Memory Manager Runtime Allocation (enable/disable).
	BIOS Power-On - Set the computer to turn on at a preset time.
	Bus Options - Allows you to enable/disable PCI SERR# Generation and PCI VGA palette snooping.
	Onboard Devices - Allows you to set resources for or disable on-board system devices.
	Device Options - Allows you to set: <ul style="list-style-type: none"> Turbo Mode (enable/disable) Num Lock State at Power-on (off/on) Internal Speaker (enable/disable) Multi-Processor (enable/disable) USB 3.0 BIOS Driver Support USB EHCI Port Debug USB Charging Port (enable/disable)
VGA Configuration - Allows you to specify which VGA controller is the "boot"/primary. Displayed only if add-in video card installed.	
	Option ROM Launch Policy - Allows you to set: <ul style="list-style-type: none"> PXE Option ROMs (UEFI Only/Do Not Launch) Storage Option ROMs (UEFI Only/Do Not Launch) Video Option ROMs (UEFI Only/Do Not Launch) NetClone Option ROMs (Legacy Only/Do Not Launch)
	PCIe Family Controller - Provides info about the PCIe controller, including: <ul style="list-style-type: none"> Driver Name Driver Version Drive Release Date Device Name PCI Slot MAC Address

Password security

Establishing a Setup or Power-On password:

- Turn on or restart the computer.
- As soon as the computer turns on, press the **Esc** key while "Press the ESC key for Startup Menu" message is displayed at the bottom of the screen.
- Press the **F10** key to enter Computer Setup.
- To establish Setup password, select **Security > Setup Password** and follow the instructions. - or - To establish a Power-On password, select **Security > Power-On Password** and follow the instructions on the screen
- Before exiting, click **File > Save Changes and Exit**.

Changing a Setup or Power-On password:

- Turn on or restart the computer.
To change the Setup password, go to step 2.
To change the Power-on password, go to step 3.
- To change the Setup password, as soon as the computer turns on:
 - Press the **Esc** key while "Press the ESC key for Startup Menu" message is displayed.
 - Press the **F10** key to enter Computer Setup.
- When the key icon appears, type your current password, a slash (/) or alternate delimiter character, your new password, another slash (/) or alternate delimiter character, and your new password again as shown:
current password/new password/new password.
NOTE: Type the new password carefully since the characters do not appear on the screen.
- Press **Enter**.
The new password will take effect the next time the computer is restarted.

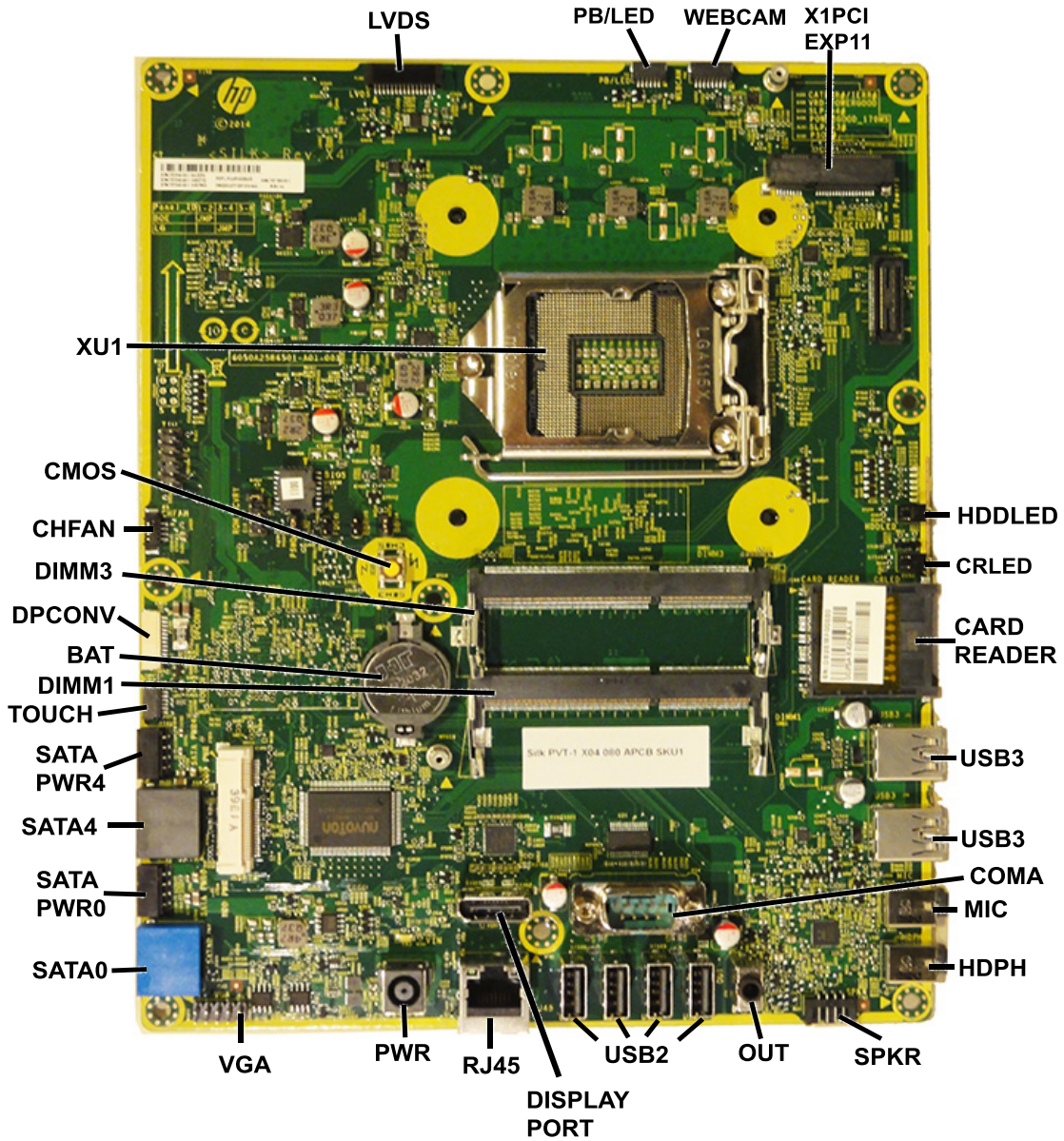
Deleting a Power-On or Setup password

- Turn on or restart the computer.
To delete the Setup password, go to step 2.
To delete the Power-On password, go to step 3.
- To change the Setup password, as soon as the computer turns on:
 - Press the **Esc** key while "Press the ESC key for Startup Menu" message is displayed.
 - Press the **F10** key to enter Computer Setup.
- When the key icon appears, type your current password followed by a slash (/) or alternate delimiter character as shown. Example: *currentpassword/*
- Press **Enter**.

Clearing CMOS

- Turn off the computer and disconnect the power cord from the power outlet.
- Remove the access panel.
- On the system board, press and hold the CMOS button for 5 seconds.
- Replace the chassis access panel and reconnect the power cord.
- Turn on the computer and allow it to start.

System board



System board connectors and jumpers (component location may vary)

LVDS	Display connector	RJ45	Network jack
PB/LED	Power switch connector	PWR	Main power connector
WEBCAM	Webcam connector	VGA	Display connector
X1PCIEXP11	PCIe X1 slot	SATA0	1st hard drive data connector
HDD LED	Hard drive LED	SATA PWR0	Hard drive power connector
CR LED	Card reader LED	SATA4	Optical drive data connector
CARD READER	Card reader slot	SATA PWR4	Optical drive power connector
USB3	USB 3.0 connector	TOUCH	Touch board connector
USB3	External USB 3.0 connector with fast charging support	DIMM1	Memory socket - Channel A
COMA	Serial port	BAT	RTC battery socket
MIC	External microphone connector	DPCONV	Converter board connector
HDPH	External headphone connector	DIMM3	Memory socket - Channel B
SPKR	Speaker connector	CHFAN	Fan connector
OUT	External audio out connector	CMOS	CMOS button
USB	External USB 2.0 connectors	XU1	Processor socket
DISPLAYPORT	DisplayPort connector		