



HP Slate 8 Plus Tablet

Maintenance and Service Guide

IMPORTANT! This document is intended for
HP authorized service providers only.

© Copyright 2014 Hewlett-Packard
Development Company, L.P.

Bluetooth is a trademark owned by its proprietor and used by Hewlett-Packard Company under license. SD Logo is a trademark of its proprietor.

The information contained herein is subject to change without notice. The only warranties for HP products and services are set forth in the express warranty statements accompanying such products and services. Nothing herein should be construed as constituting an additional warranty. HP shall not be liable for technical or editorial errors or omissions contained herein.

First Edition: May 2014

Document Part Number: 768332-001

Product notice

This guide describes features that are common to most models. Some features may not be available on your tablet.

Software terms

By installing, copying, downloading, or otherwise using any software product preinstalled on this tablet, you agree to be bound by the terms of the HP End User License Agreement (EULA). If you do not accept these license terms, your sole remedy is to return the entire unused product (hardware and software) within 14 days for a refund subject to the refund policy of your place of purchase.

For any further information or to request a full refund of the tablet, please contact your local point of sale (the seller).

Safety warning notice

⚠ WARNING! To reduce the possibility of heat-related injuries or of overheating the device, do not place the device directly on your lap or obstruct the device air vents. Use the device only on a hard, flat surface. Do not allow another hard surface, such as an adjoining optional printer, or a soft surface, such as pillows or rugs or clothing, to block airflow. Also, do not allow the AC adapter to contact the skin or a soft surface, such as pillows or rugs or clothing, during operation. The device and the AC adapter comply with the user-accessible surface temperature limits defined by the International Standard for Safety of Information Technology Equipment (IEC 60950).

Table of contents

1 Product description	1
2 External component identification	3
3 Illustrated parts catalog	4
Locating the tablet part number, serial number, and IMEI number	4
Tablet major components	5
Miscellaneous parts	7
Sequential part number listing	8
4 Removal and replacement preliminary requirements	10
Tools required	10
Service considerations	10
Plastic parts	10
Cables and connectors	10
Drive handling	11
Grounding guidelines	11
Electrostatic discharge damage	11
Packaging and transporting guidelines	13
Workstation guidelines	13
Equipment guidelines	14
5 Removal and replacement procedures	15
Top and bottom covers	15
Display panel assembly	16
Battery	18
Speakers	19
Delivery antenna board	21
Front-facing webcam	22
Volume button board	24
Connector board	25

System board	27
Rear-facing webcam	29
Vibrator module	30

6 Specifications 32

7 Power cord set requirements 33

Requirements for all countries	33
Requirements for specific countries and regions	33

8 Recycling 35

Index 36

1 Product description

Category	Description
Product Name	HP Slate 8 Plus Tablet
Chipset/processor	Balong® V9R1 Cortex-A9 quad core 1.60-GHz processor
Graphics	Integrated with solder-on-circuit (SoC)
Panel	8.0-in, 1280×800, diagonal capacitive, 10-point MultiTouch, in-plane switching (IPS), high-definition (HD), wide-viewing angle display panel
Memory	Supports 1 GB, LPDDR2, 533-MHz system memory, integrated onto system board
Storage	Supports 16 GB eMMC storage, integrated onto system board Supports external Micro SD up to 32 GB
Audio and video	1.0-MP, fixed-focus, front-facing webcam 5.0-MP, auto-focus, rear-facing webcam Dual microphones (2) Integrated 0.5-W stereo speakers (2), SWS
Sensors	<ul style="list-style-type: none">• Accelerometer• Ambient light sensor+Proximity• GPS/AGPS/Glonass
Wireless	<ul style="list-style-type: none">• S8: 301L; GSM: band 2/3/5/8; UMTS: band 1/2/5/8; FDD LTE: band 1/3/7/20; TDD LTE: 38/40• Wifi: 802.11 a/b/g/n• Bluetooth: 4.0+LE
Ports	<ul style="list-style-type: none">• Micro USB type B with MHL support• Micro SD Card Reader slot• Micro SIM slot• Audio jack: 3.5-mm with microphone and URAT support
Power requirements	Supports a 1-cell, 4800-mAh, lithium-polymer, USB-charging battery Supports a 10-W, 5-V/2-A USB cable AC adapter

Category	Description
Operating system	Preinstalled: Android 4.4.2
Serviceability	End user replaceable parts: AC adapter and USB cable

2 External component identification

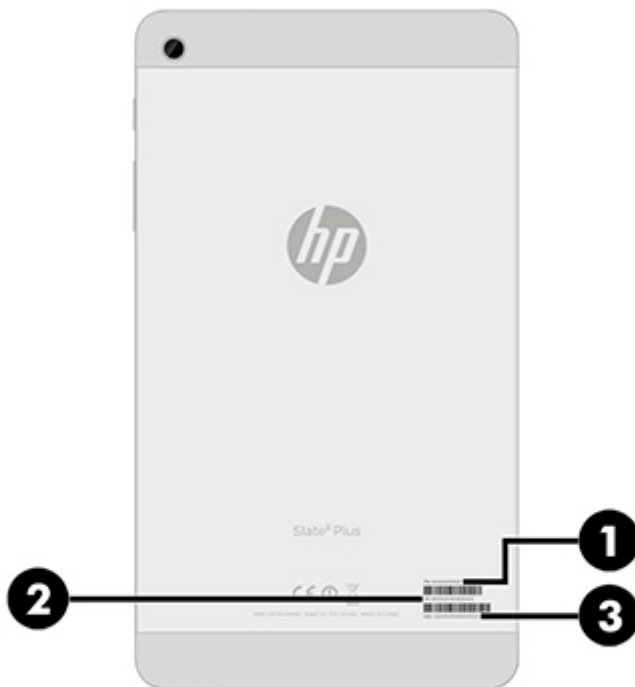


Item	Component	Item	Component
(1)	Microphone	(5)	Volume control buttons
(2)	Audio-out (headphone)/Audio-in (microphone) jack	(6)	Microphone
(3)	Front-facing webcam	(7)	Micro USB port
(4)	Power button	(8)	Speakers

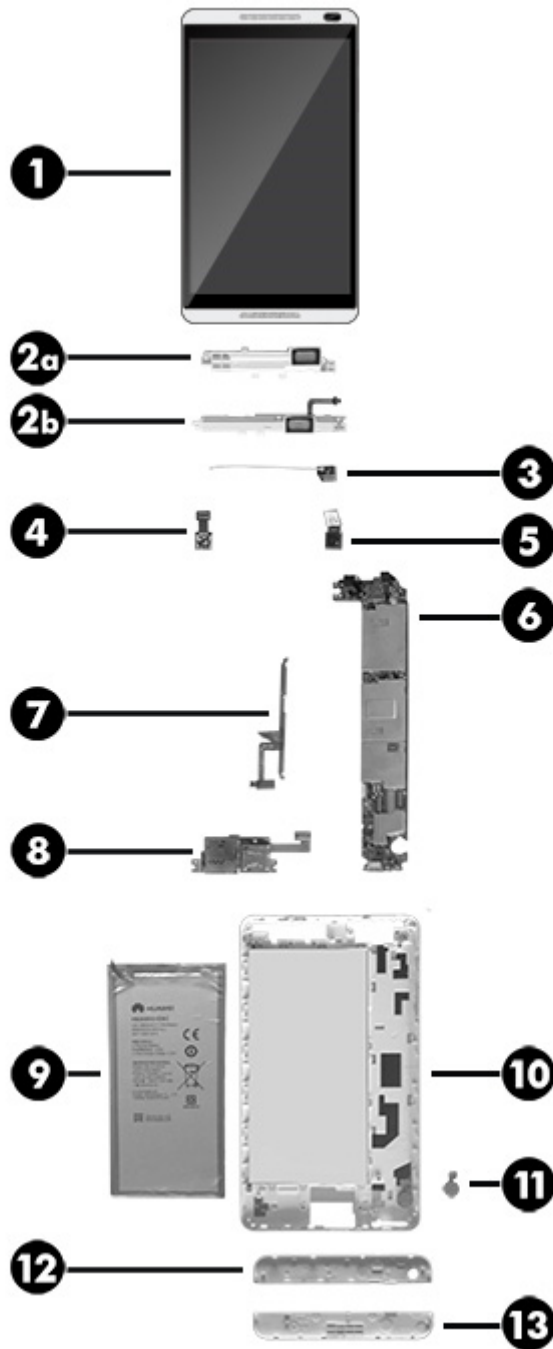
3 Illustrated parts catalog

Locating the tablet part number, serial number, and IMEI number

The tablet part number **(1)**, serial number **(2)**, and International Mobile Station Equipment Identity number (IMEI) **(3)** are located on the tablet back cover. This information may be needed when travelling internationally or when contacting support.



Tablet major components



Item	Component	Spare part number
(1)	Display panel assembly (8.0-in, 1280×800, diagonal capacitive, 10-point MultiTouch, IPS, HD, wide-viewing angle, includes front bezel)	775651-001
	Speaker Kit , includes:	775653-001
(2a)	Top speaker	

Item	Component	Spare part number
(2b)	Bottom speaker and cable	
(3)	Delivery antenna board (includes double-sided adhesive)	775647-001
(4)	1.0-MP, fixed-focus front-facing webcam (includes cable and double-sided adhesive)	775655-001
(5)	5.0-MP, auto-focus rear-facing webcam (includes cable and double-sided adhesive)	775656-001
(6)	System board equipped with a Balong V9R1 Cortex-A9 quad core 1.6-GHz processor, 1.0-GB of system memory, 16-GB eMMC system storage	775654-001
(7)	Volume button board (includes cable and grounding tape)	775646-001
(8)	Connector board (includes cable, micro SD Card Reader slot, and micro SIM slot)	775648-001
(9)	Battery , 1-cell, 4800-mAh, lithium-polymer, USB-charging (includes cable and double-sided adhesive)	775643-001
(10)	Back cover (includes 1-cell, 4800-mAh, lithium-polymer, USB-charging battery, ambient light sensor rubber cover, microphone rubber cover, 193-mm RF cable and 75-mm RF cable)	775642-001
(11)	Vibrator module (includes cable and double-sided adhesive)	775649-001
	Cover Kit , includes:	775650-001
(12)	Top cover	
(13)	Bottom cover	
	Host antenna board (not illustrated, includes double-sided adhesive)	775645-001

Miscellaneous parts

Component	Spare part number
10-W AC adapter	
For use in Argentina	773125-001
For use in Australia	773125-002
For use in Europe	773125-009
For use in India	773125-005
For use in North America	773125-008
For use in South Africa	773125-007
For use in the United Kingdom and Singapore	773125-003
HP Slate 8 Plus Tablet:	
HP Slate 8 Plus Tablet equipped with an 8.0-in, 1280×800, diagonal capacitive, 10-point MultiTouch, IPS, HD, wide-viewing angle display panel, a Balong V9R1 Cortex-A9 quad core 1.6-GHz processor, 1.0-GB of system memory, 16-GB eMMC system storage, and a 1-cell, 4800-mAh, lithium-polymer, USB-charging battery for use in all countries and regions except Europe, the Middle East, and Africa	775644-001
HP Slate 8 Plus Tablet equipped with an 8.0-in, 1280×800, diagonal capacitive, 10-point MultiTouch, IPS, HD, wide-viewing angle display panel, a Balong V9R1 Cortex-A9 quad core 1.6-GHz processor, 1.0-GB of system memory, 16-GB eMMC system storage, and a 1-cell, 4800-mAh, lithium-polymer, USB-charging battery for use in Europe, the Middle East, and Africa	775644-021
Screw Kit	775652-001
USB dongle	780960-001
USB extension cable	767952-001

Sequential part number listing

Spare part number	Description
767952-001	USB extension cable
773125-001	10-W AC adapter for use in Argentina
773125-002	10-W AC adapter for use in Australia
773125-003	10-W AC adapter for use in the United Kingdom and Singapore
773125-005	10-W AC adapter for use in India
773125-007	10-W AC adapter for use in South Africa
773125-008	10-W AC adapter for use in North America
773125-009	10-W AC adapter for use in Europe
775642-001	Back cover (includes 1-cell, 4800-mAh, lithium-polymer, USB-charging battery, ambient light sensor rubber cover, microphone rubber cover, 193-mm RF cable and 75-mm RF cable)
775643-001	Battery, 1-cell, 4800-mAh, lithium-polymer, USB-charging (includes cable and double-sided adhesive)
775644-001	HP Slate 8 Plus Tablet equipped with an 8.0-in, 1280×800, diagonal capacitive, 10-point MultiTouch, IPS, HD, wide-viewing angle display panel, a Balong V9R1 Cortex-A9 quad core 1.6-GHz processor, 1.0-GB of system memory, 16-GB eMMC system storage, and a 1-cell, 4800-mAh, lithium-polymer, USB-charging battery for use in all countries and regions except Europe, the Middle East, and Africa
775644-021	HP Slate 8 Plus Tablet equipped with an 8.0-in, 1280×800, diagonal capacitive, 10-point MultiTouch, IPS, HD, wide-viewing angle display panel, a Balong V9R1 Cortex-A9 quad core 1.6-GHz processor, 1.0-GB of system memory, 16-GB eMMC system storage, and a 1-cell, 4800-mAh, lithium-polymer, USB-charging battery for use in Europe, the Middle East, and Africa
775645-001	Host antenna board (includes double-sided adhesive)
775646-001	Volume button board (includes cable and grounding tape)
775647-001	Delivery antenna board
775648-001	Connector board (includes cable, micro SD Card Reader slot, and micro SIM slot)
775649-001	Vibrator module (includes cable and double-sided adhesive)
775650-001	Cover Kit (includes top and bottom covers)
775651-001	8.0-in, 1280×800, diagonal capacitive, 10-point MultiTouch, IPS, HD, wide-viewing angle display panel assembly (includes front bezel)
775652-001	Screw Kit
775653-001	Speaker Kit (includes top speaker and bottom speaker and cable)
775654-001	System board equipped with a Balong V9R1 Cortex-A9 quad core 1.6-GHz processor, 1.0-GB of system memory, 16-GB eMMC system storage
775655-001	1.0-MP, fixed-focus front-facing webcam (includes cable and double-sided adhesive)

Spare part number	Description
775656-001	5.0-MP, auto-focus rear-facing webcam (includes cable and double-sided adhesive)
780960-001	USB dongle

4 Removal and replacement preliminary requirements


Tools required

You will need the following tools to complete the removal and replacement procedures:


- Flat-bladed screw driver
- Magnetic screw driver
- Phillips P00 screw driver
- Torx5 screw driver

Service considerations


The following sections include some of the considerations that you must keep in mind during disassembly and assembly procedures.

 **NOTE:** As you remove each subassembly from the computer, place the subassembly (and all accompanying screws) away from the work area to prevent damage.

Plastic parts

 **CAUTION:** Using excessive force during disassembly and reassembly can damage plastic parts. Use care when handling the plastic parts. Apply pressure only at the points designated in the maintenance instructions.

Cables and connectors

 **CAUTION:** When servicing the computer, be sure that cables are placed in their proper locations during the reassembly process. Improper cable placement can damage the computer.

Cables must be handled with extreme care to avoid damage. Apply only the tension required to unseat or seat the cables during removal and insertion. Handle cables by the connector whenever possible. In all cases, avoid bending, twisting, or tearing cables. Be sure that cables are routed in such a way that they cannot be caught or snagged by parts being removed or replaced. Handle flex cables with extreme care; these cables tear easily.

Drive handling

⚠ CAUTION: Drives are fragile components that must be handled with care. To prevent damage to the computer, damage to a drive, or loss of information, observe these precautions:

Before removing or inserting a drive, shut down the computer. If you are unsure whether the computer is off or in Hibernation, turn the computer on, and then shut it down through the operating system.

Before handling a drive, be sure that you are discharged of static electricity. While handling a drive, avoid touching the connector.

Before removing a diskette drive or optical drive, be sure that a diskette or disc is not in the drive and be sure that the optical drive tray is closed.

Handle drives on surfaces covered with at least one inch of shock-proof foam.

Avoid dropping drives from any height onto any surface.

After removing a drive, place it in a static-proof bag.

Avoid exposing a drive to products that have magnetic fields, such as monitors or speakers.

Avoid exposing a drive to temperature extremes or liquids.

If a drive must be mailed, place the drive in a bubble pack mailer or other suitable form of protective packaging and label the package "FRAGILE."

Grounding guidelines

Electrostatic discharge damage

Electronic components are sensitive to electrostatic discharge (ESD). Circuitry design and structure determine the degree of sensitivity. Networks built into many integrated circuits provide some protection, but in many cases, ESD contains enough power to alter device parameters or melt silicon junctions.

A discharge of static electricity from a finger or other conductor can destroy static-sensitive devices or microcircuitry. Even if the spark is neither felt nor heard, damage may have occurred.

An electronic device exposed to ESD may not be affected at all and can work perfectly throughout a normal cycle. Or the device may function normally for a while, then degrade in the internal layers, reducing its life expectancy.

CAUTION: To prevent damage to the computer when you are removing or installing internal components, observe these precautions:

Keep components in their electrostatic-safe containers until you are ready to install them.

Before touching an electronic component, discharge static electricity by using the guidelines described in this section.

Avoid touching pins, leads, and circuitry. Handle electronic components as little as possible.

If you remove a component, place it in an electrostatic-safe container.

The following table shows how humidity affects the electrostatic voltage levels generated by different activities.

CAUTION: A product can be degraded by as little as 700 V.

Typical electrostatic voltage levels			
Event	Relative humidity		
	10%	40%	55%
Walking across carpet	35,000 V	15,000 V	7,500 V
Walking across vinyl floor	12,000 V	5,000 V	3,000 V
Motions of a bench worker	6,000 V	800 V	400 V
Removing DIPS from a plastic tube	2,000 V	700 V	400 V
Removing DIPS from a vinyl tray	11,500 V	4,000 V	2,000 V
Removing DIPS from Styrofoam	14,500 V	5,000 V	3,500 V
Removing bubble pack from PCB	26,500 V	20,000 V	7,000 V
Packing PCBs in a foam-lined box	21,000 V	11,000 V	5,000 V

Packaging and transporting guidelines

Follow these grounding guidelines when packaging and transporting equipment:

- To avoid hand contact, transport products in static-safe tubes, bags, or boxes.
- Protect ESD-sensitive parts and assemblies with conductive or approved containers or packaging.
- Keep ESD-sensitive parts in their containers until the parts arrive at static-free workstations.
- Place items on a grounded surface before removing items from their containers.
- Always be properly grounded when touching a component or assembly.
- Store reusable ESD-sensitive parts from assemblies in protective packaging or non-conductive foam.
- Use transporters and conveyors made of antistatic belts and roller bushings. Be sure that mechanized equipment used for moving materials is wired to ground and that proper materials are selected to avoid static charging. When grounding is not possible, use an ionizer to dissipate electric charges.

Workstation guidelines

Follow these grounding workstation guidelines:

- Cover the workstation with approved static-shielding material.
- Use a wrist strap connected to a properly grounded work surface and use properly grounded tools and equipment.
- Use conductive field service tools, such as cutters, screw drivers, and vacuums.
- When fixtures must directly contact dissipative surfaces, use fixtures made only of static-safe materials.
- Keep the work area free of non-conductive materials, such as ordinary plastic assembly aids and Styrofoam.
- Handle ESD-sensitive components, parts, and assemblies by the case or PCM laminate. Handle these items only at static-free workstations.
- Avoid contact with pins, leads, or circuitry.
- Turn off power and input signals before inserting or removing connectors or test equipment.

Equipment guidelines

Grounding equipment must include either a wrist strap or a foot strap at a grounded workstation.

- When seated, wear a wrist strap connected to a grounded system. Wrist straps are flexible straps with a minimum of one megohm $\pm 10\%$ resistance in the ground cords. To provide proper ground, wear a strap snugly against the skin at all times. On grounded mats with banana-plug connectors, use alligator clips to connect a wrist strap.
- When standing, use foot straps and a grounded floor mat. Foot straps (heel, toe, or boot straps) can be used at standing workstations and are compatible with most types of shoes or boots. On conductive floors or dissipative floor mats, use foot straps on both feet with a minimum of one megohm resistance between the operator and ground. To be effective, the conductive must be worn in contact with the skin.


The following grounding equipment is recommended to prevent electrostatic damage:

- Antistatic tape
- Antistatic smocks, aprons, and sleeve protectors
- Conductive bins and other assembly or soldering aids
- Non-conductive foam
- Conductive countertop workstations with ground cords of one megohm resistance
- Static-dissipative tables or floor mats with hard ties to the ground
- Field service kits
- Static awareness labels
- Material-handling packages
- Non-conductive plastic bags, tubes, or boxes
- Metal tote boxes
- Electrostatic voltage levels and protective materials

The following table lists the shielding protection provided by antistatic bags and floor mats.

Material	Use	Voltage protection level
Antistatic plastics	Bags	1,500 V
Carbon-loaded plastic	Floor mats	7,500 V
Metallized laminate	Floor mats	5,000 V


5 Removal and replacement procedures

 **CAUTION:** Tablet components described in this chapter should only be accessed by an authorized service provider. Accessing these components can damage the tablet or void the warranty.

 **NOTE:** HP continually improves and changes product parts. For complete and current information on supported parts for the tablet/keyboard, go to <http://partsurfer.hp.com>, select the country or region, and then follow the on-screen instructions.

There are as many as 13 screws that must be removed, replaced, and/or loosened when servicing the tablet. Make special note of each screw size and location during removal and replacement.


Top and bottom covers

 **NOTE:** The top and bottom covers are included in the Cover Kit, spare part number 775650-001.

Before disassembling the tablet, follow these steps:

1. Turn off the tablet. If you are unsure whether the tablet is off or in Hibernation, turn the tablet on, and then shut it down through the operating system.
2. Disconnect the power from the tablet by unplugging the power cord from the tablet.
3. Disconnect all external devices from the tablet.

Remove the top and bottom covers:

 **CAUTION:** Before positioning the tablet with display panel facing down, make sure the work surface is clear of tools, screws, and any other foreign objects. Failure to follow this caution can result in damage to the display panel.

1. Position the tablet with the display panel facing down and the USB power connector toward you.
2. Release the outside edges of the top and bottom covers **(1)** from the display panel assembly and swing them up and to the inside.

3. Remove the top and bottom covers (2).



Reverse this procedure to install the top and bottom covers.

Display panel assembly

Description	Spare part number
Display panel assembly (8.0-in, 1280×800, diagonal capacitive, 10-point MultiTouch, IPS, HD, wide-viewing angle, includes front bezel)	775651-001

Before removing the back cover, follow these steps:

1. Turn off the tablet. If you are unsure whether the tablet is off or in Hibernation, turn the tablet on, and then shut it down through the operating system.
2. Disconnect the power from the tablet by unplugging the power cord from the tablet.
3. Disconnect all external devices from the tablet.
4. Remove the top and bottom covers (see [Top and bottom covers on page 15](#)).

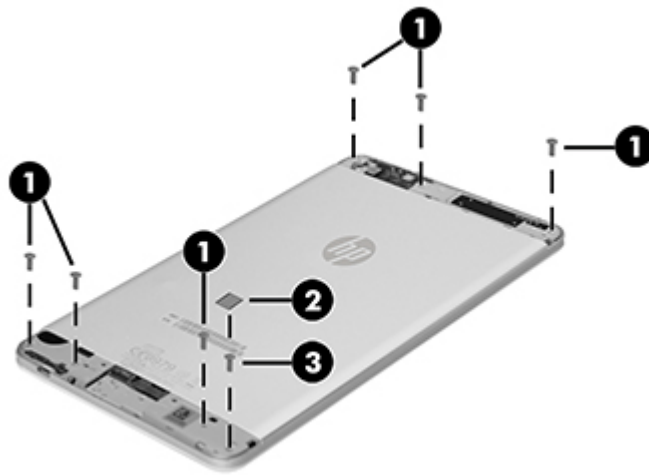
Remove the display panel assembly:

CAUTION: Before positioning the tablet with display panel facing down, make sure the work surface is clear of tools, screws, and any other foreign objects. Failure to follow this caution can result in damage to the display panel.

1. Position the tablet with the display panel facing down and the micro SD Card Reader slot toward you.
2. Remove the six Torx5 T5M1.4x4.2 screws **(1)** that secure the display panel assembly to the back cover.

NOTE: The following screw should have a warranty tag **(2)** on it. This tag should not have any signs of tampering on it. When repairs have been completed on the tablet, this warranty tag should be replaced.

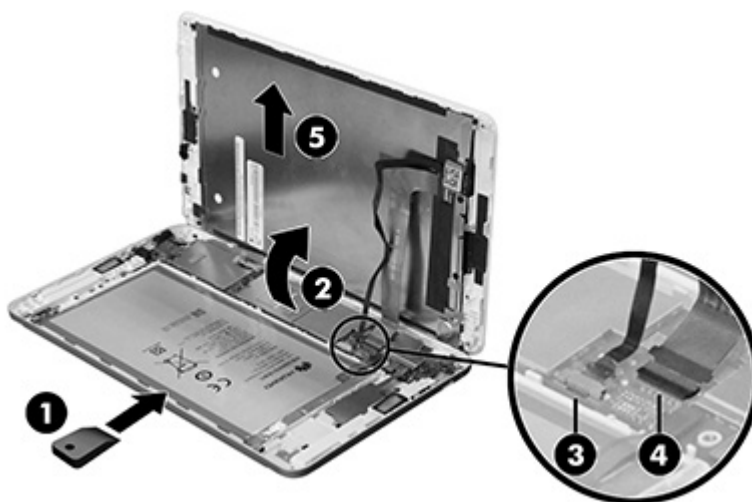
3. Remove the Torx5 T5M1.4x4.2 **(3)** that secures the display panel assembly to the back cover.



CAUTION: Do not completely separate the display panel assembly from the back cover in the next step. The display panel ribbon cable and TouchScreen ribbon cable are connected between the display panel assembly and the system board and can be damaged if too much separation is achieved.

4. Position the tablet with the display panel facing up and the micro SD Card Reader slot toward you.
5. Use a case utility tool **(1)** or similar thin tool to separate the display panel assembly from the back cover.
6. Swing the display panel assembly **(2)** up and back until it rests in an upright position next to the back cover.
7. Release the zero insertion force (ZIF) connector **(3)** to which the TouchScreen cable is attached, and then disconnect the TouchScreen cable from the system board.
8. Release the ZIF connector **(4)** to which the display panel cable is attached, and then disconnect the display panel cable from the system board.

9. Remove the display panel assembly (5).



Reverse this procedure to install the display panel assembly.

Battery

Description	Spare part number
Battery, 1-cell, 4800-mAh, lithium-polymer, USB-charging (includes cable and double-sided adhesive)	775643-001

Before removing the battery, follow these steps:

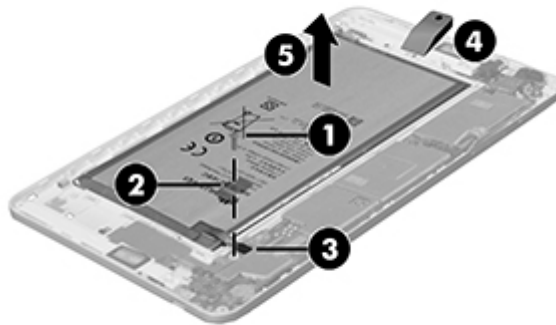
1. Turn off the tablet. If you are unsure whether the tablet is off or in Hibernation, turn the tablet on, and then shut it down through the operating system.
2. Disconnect the power from the tablet by unplugging the power cord from the tablet.
3. Disconnect all external devices from the tablet.
4. Remove the top and bottom covers (see [Top and bottom covers on page 15](#)).
5. Remove the display panel assembly (see [Display panel assembly on page 16](#)).

WARNING! To reduce potential safety issues, use only the battery provided with the tablet, a replacement battery provided by HP, or a compatible battery purchased from HP.

CAUTION: Removing a battery that is the sole power source for the tablet can cause loss of information. To prevent loss of information, save your work or shut down the tablet through the operating system before removing the battery.

Remove the battery:

1. Remove the Phillips PM1.4x2.5 screw **(1)** that secures the battery cable bracket to the system board.
2. Remove the battery cable bracket **(2)**.
3. Disconnect the battery cable **(3)** from the system board.
4. Insert a case utility tool **(4)** or similar thin tool between the battery and the back cover, and then detach the battery from the back cover. (The battery is attached to the back cover with double-sided adhesive.)
5. Remove the battery **(5)**.



Reverse this procedure to install the battery.

Speakers

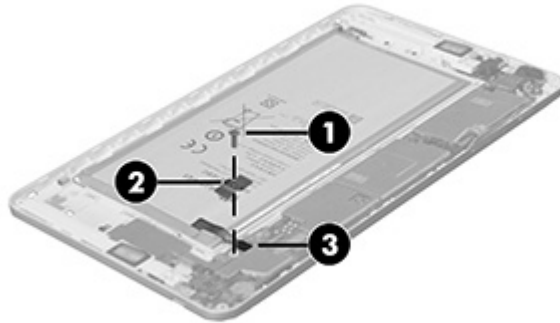
Description	Spare part number
Speaker Kit (includes top speaker and bottom speaker and cable)	775653-001

Before removing the speakers, follow these steps:

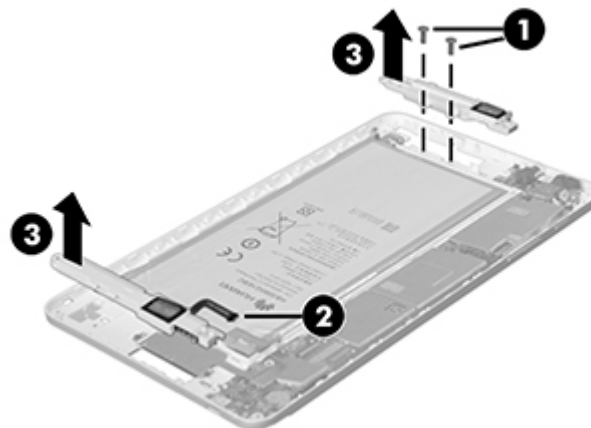
1. Turn off the tablet. If you are unsure whether the tablet is off or in Hibernation, turn the tablet on, and then shut it down through the operating system.
2. Disconnect the power from the tablet by unplugging the power cord from the tablet.
3. Disconnect all external devices from the tablet.
4. Remove the top and bottom covers (see [Top and bottom covers on page 15](#)).
5. Remove the display panel assembly (see [Display panel assembly on page 16](#)).

Remove the speakers:

1. Remove the Phillips PM1.4×2.5 screw **(1)** that secures the battery cable bracket to the system board.
2. Remove the battery cable bracket **(2)**.
3. Disconnect the battery cable **(3)** from the system board.



4. Remove the two Phillips PM1.4×2.5 screws **(1)** that secure the top speaker to the back cover.
5. Disconnect the bottom speaker cable **(2)** from the system board.
6. Remove the speakers **(3)**.



Reverse this procedure to install the speakers.

Delivery antenna board

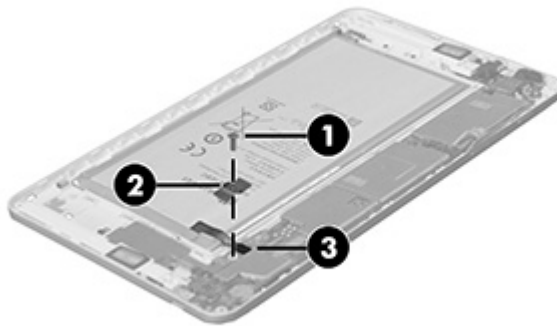
Description	Spare part number
Delivery antenna board (includes double-sided adhesive)	775647-001

Before removing the delivery antenna board, follow these steps:

1. Turn off the tablet. If you are unsure whether the tablet is off or in Hibernation, turn the tablet on, and then shut it down through the operating system.
2. Disconnect the power from the tablet by unplugging the power cord from the tablet.
3. Disconnect all external devices from the tablet.
4. Remove the top and bottom covers (see [Top and bottom covers on page 15](#)).
5. Remove the display panel assembly (see [Display panel assembly on page 16](#)).

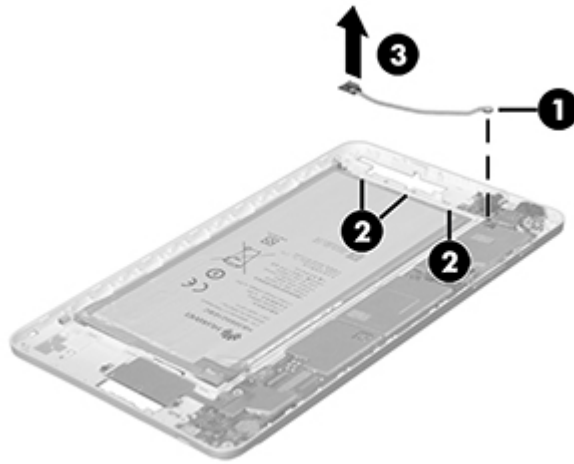
Remove the delivery antenna board:

1. Remove the Phillips PM1.4×2.5 screw **(1)** that secures the battery cable bracket to the system board.
2. Remove the battery cable bracket **(2)**.
3. Disconnect the battery cable **(3)** from the system board.




4. Disconnect the RF antenna cable **(1)** from the antenna terminal on the system board.
5. Release the RF antenna cable from the clips **(2)** and routing channel built into the back cover.

6. Detach the delivery antenna board **(3)** from the back cover. (The delivery antenna board is attached to the back cover with double-sided adhesive.)



7. Remove the delivery antenna board and RF cable.

 **NOTE:** The RF cable is included in the back cover spare part kit, spare part number 775642-001.

Reverse this procedure to install the delivery antenna board.

Front-facing webcam

Description	Spare part number
1.0-MP, fixed-focus front-facing webcam (includes cable and double-sided adhesive)	775655-001

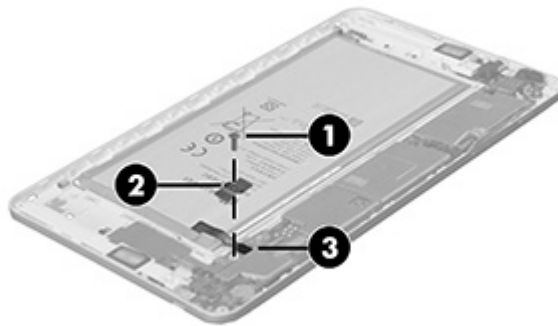
Before removing the front-facing webcam, follow these steps:

1. Turn off the tablet. If you are unsure whether the tablet is off or in Hibernation, turn the tablet on, and then shut it down through the operating system.
2. Disconnect the power from the tablet by unplugging the power cord from the tablet.
3. Disconnect all external devices from the tablet.
4. Remove the top and bottom covers (see [Top and bottom covers on page 15](#)).
5. Remove the display panel assembly (see [Display panel assembly on page 16](#)).

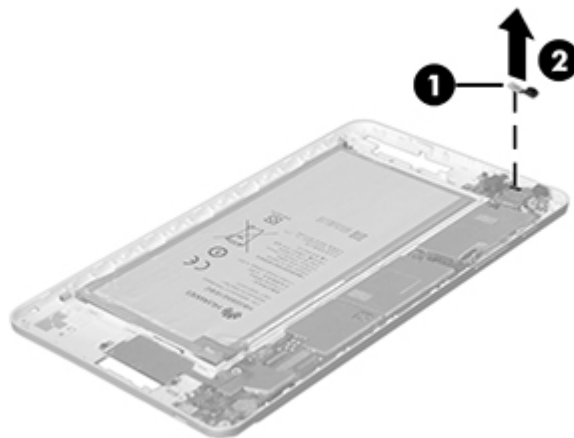
Remove the front-facing webcam:

1. Remove the Phillips PM1.4×2.5 screw **(1)** that secures the battery cable bracket to the system board.
2. Remove the battery cable bracket **(2)**.

3. Disconnect the battery cable **(3)** from the system board.



4. Disconnect the front-facing webcam cable **(1)** from the system board.
5. Detach the front-facing webcam **(2)** from the back cover. (The front-facing webcam is attached to the back cover with double-sided adhesive.)



6. Remove the front-facing webcam and cable.

Reverse this procedure to install the front-facing webcam.

Volume button board

Description	Spare part number
Volume button board (includes cable and grounding tape)	775646-001

Before removing the volume button board, follow these steps:

1. Turn off the tablet. If you are unsure whether the tablet is off or in Hibernation, turn the tablet on, and then shut it down through the operating system.
2. Disconnect the power from the tablet by unplugging the power cord from the tablet.
3. Disconnect all external devices from the tablet.
4. Remove the top and bottom covers (see [Top and bottom covers on page 15](#)).
5. Remove the display panel assembly (see [Display panel assembly on page 16](#)).

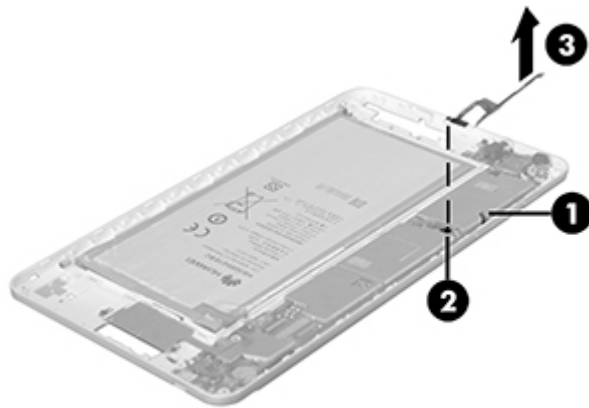
Remove the volume button board:

1. Remove the Phillips PM1 .4×2.5 screw **(1)** that secures the battery cable bracket to the system board.
2. Remove the battery cable bracket **(2)**.
3. Disconnect the battery cable **(3)** from the system board.



4. Release the grounding tape **(1)** that secures the volume button board to the back cover.
5. Release the ZIF connector **(2)** to which the volume button board cable is attached, and then disconnect the volume button board cable from the system board.

6. Release the volume button board **(3)** from the clips built into the back cover.



7. Remove the volume button board and cable.

Reverse this procedure to install the volume button board.

Connector board

Description	Spare part number
Connector board (includes cable, micro SD Card Reader slot, and micro SIM slot)	775648-001

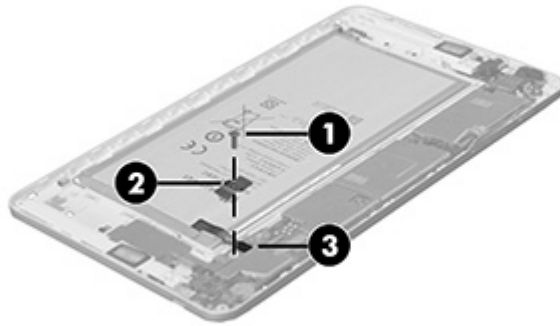
Before removing the connector board, follow these steps:

1. Turn off the tablet. If you are unsure whether the tablet is off or in Hibernation, turn the tablet on, and then shut it down through the operating system.
2. Disconnect the power from the tablet by unplugging the power cord from the tablet.
3. Disconnect all external devices from the tablet.
4. Remove the top and bottom covers (see [Top and bottom covers on page 15](#)).
5. Remove the display panel assembly (see [Display panel assembly on page 16](#)).

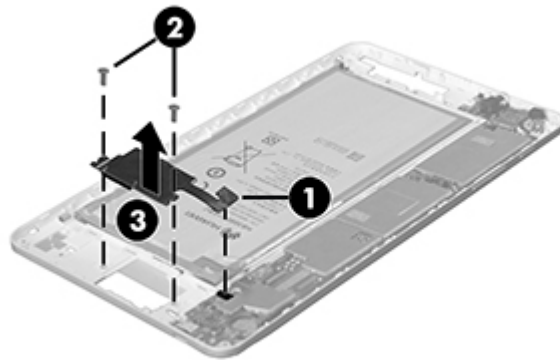
Remove the connector board:

1. Remove the Phillips PM1.4x2.5 screw **(1)** that secures the battery cable bracket to the system board.
2. Remove the battery cable bracket **(2)**.

3. Disconnect the battery cable **(3)** from the system board.



4. Disconnect the connector board cable **(1)** from the system board.
5. Remove the two Phillips PM1.4x2.5 screws **(2)** that secure the connector board to the back cover.
6. Remove the connector board **(3)**.



Reverse this procedure to install the connector board.

System board

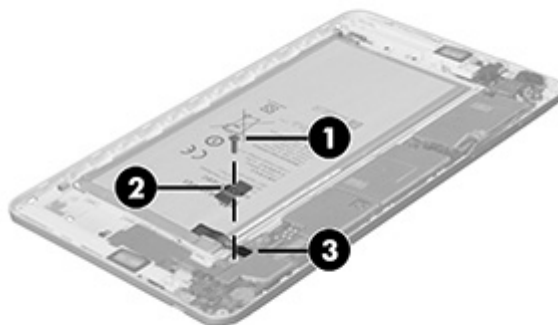
Description	Spare part number
System board equipped with a Balong V9R1 Cortex-A9 quad core 1.6-GHz processor, 1.0-GB of system memory, 16-GB eMMC system storage	775654-001

Before removing the system board, follow these steps:

1. Turn off the tablet. If you are unsure whether the tablet is off or in Hibernation, turn the tablet on, and then shut it down through the operating system.
2. Disconnect the power from the tablet by unplugging the power cord from the tablet.
3. Disconnect all external devices from the tablet.
4. Remove the top and bottom covers (see [Top and bottom covers on page 15](#)).
5. Remove the display panel assembly (see [Display panel assembly on page 16](#)).

Remove the system board:

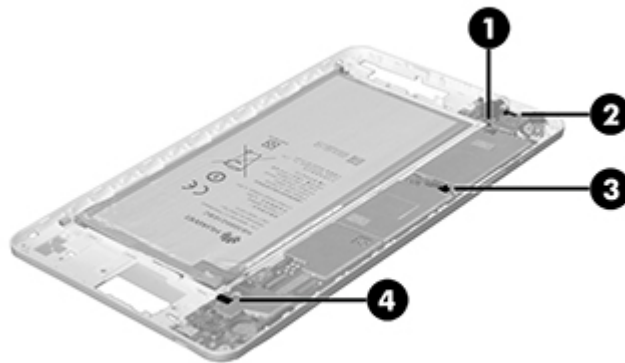
1. Remove the Phillips PM1.4x2.5 screw **(1)** that secures the battery cable bracket to the system board.
2. Remove the battery cable bracket **(2)**.
3. Disconnect the battery cable **(3)** from the system board.



4. Detach the rear-facing webcam from the back cover. (The rear-facing webcam is attached to the back cover with double-sided adhesive.)

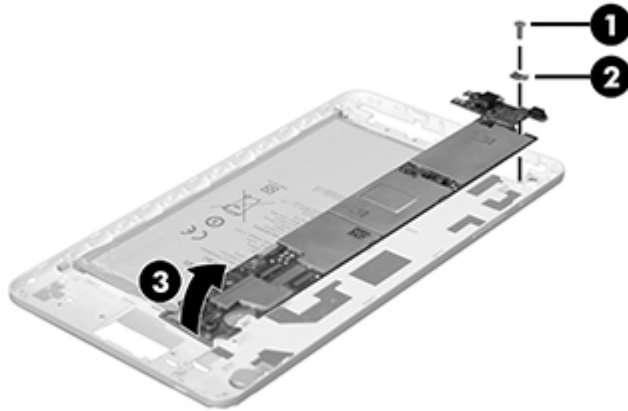


5. Disconnect the RF antenna cable **(1)** from the antenna terminal on the system board.
6. Disconnect the front-facing webcam cable **(2)** from the system board.
7. Release the ZIF connector **(3)** to which the volume button board cable is attached, and then disconnect the volume button board cable from the system board.
8. Disconnect the connector board cable **(4)** from the system board.



9. Remove the Phillips PM1.4×2.5 screw **(1)** that secures the system board to the back cover.
10. Remove the system board bracket **(2)**.

11. Lift the rear edge of the system board **(3)** until it rests at an angle, and then remove the system board by sliding it up and back at an angle.



Reverse this procedure to install the system board.

Rear-facing webcam

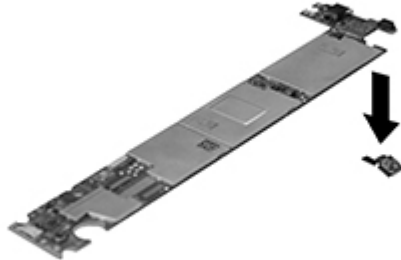
Description	Spare part number
5.0-MP, auto-focus, rear-facing webcam (includes cable and double-sided adhesive)	775656-001

Before removing the rear-facing webcam, follow these steps:

1. Turn off the tablet. If you are unsure whether the tablet is off or in Hibernation, turn the tablet on, and then shut it down through the operating system.
2. Disconnect the power from the tablet by unplugging the power cord from the tablet.
3. Disconnect all external devices from the tablet.
4. Remove the top and bottom covers (see [Top and bottom covers on page 15](#)).
5. Remove the display panel assembly (see [Display panel assembly on page 16](#)).
6. Remove the system board (see [System board on page 27](#)).

Remove the rear-facing webcam:

1. Disconnect the rear-facing webcam cable from the system board.



2. Remove the rear-facing webcam and cable.

Reverse this procedure to install the rear-facing webcam.

Vibrator module

Description	Spare part number
Vibrator module (includes cable and double-sided adhesive)	775649-001

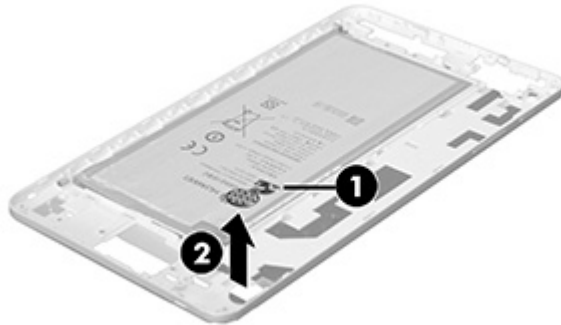
Before removing the vibrator module, follow these steps:

1. Turn off the tablet. If you are unsure whether the tablet is off or in Hibernation, turn the tablet on, and then shut it down through the operating system.
2. Disconnect the power from the tablet by unplugging the power cord from the tablet.
3. Disconnect all external devices from the tablet.
4. Remove the top and bottom covers (see [Top and bottom covers on page 15](#)).
5. Remove the display panel assembly (see [Display panel assembly on page 16](#)).
6. Remove the system board (see [System board on page 27](#)).

Remove the vibrator module:

1. Detach the vibrator module cable **(1)** from the back cover. (The vibrator module cable is attached to the back cover with double-sided adhesive.)

2. Detach the vibrator module **(2)** from the back cover. (The vibrator module is attached to the back cover with double-sided adhesive.)



3. Remove the vibrator module and cable.

Reverse this procedure to install the vibrator module.

6 Specifications

	Metric	U.S.
Dimensions (Portrait orientation)		
Height	21.4 cm	8.4 in
Width	12.1 cm	4.8 in
Depth	0.8 cm	0.3 in
Weight	360 g	0.8 lb
The tablet operates on DC power, which can be supplied by an AC or a DC power source. The AC power source must be rated at 100–240 V, 50/60 Hz, 0.3-1.0 A.		
NOTE: The tablet can operate on DC power using an industry-standard micro-B USB cable. The HP adapter included with your tablet is recommended for charging the tablet.		
Temperature		
Operating	5°C to 35°C	41°F to 95°F
Nonoperating	-20°C to 60°C	-4°F to 140°F
Relative humidity (non-condensing)		
Operating	10% to 90%	
Nonoperating	5% to 95%	
Maximum altitude (unpressurized)		
Operating	-15 m to 3,048 m	-50 ft to 10,000 ft
Nonoperating	-15 m to 12,192 m	-50 ft to 40,000 ft
NOTE: Applicable product safety standards specify thermal limits for plastic surfaces. The device operates well within this range of temperatures.		

7 Power cord set requirements

The wide-range input feature of the tablet permits it to operate from any line voltage from 100 to 120 volts AC, or from 220 to 240 volts AC.

The 3-conductor power cord set included with the tablet meets the requirements for use in the country or region where the equipment is purchased.

Power cord sets for use in other countries and regions must meet the requirements of the country or region where the tablet is used.

Requirements for all countries

The following requirements are applicable to all countries and regions:

- The length of the power cord set must be at least 1.0 m (3.3 ft) and no more than 2.0 m (6.5 ft).
- All power cord sets must be approved by an acceptable accredited agency responsible for evaluation in the country or region where the power cord set will be used.
- The power cord sets must have a minimum current capacity of 10 amps and a nominal voltage rating of 125 or 250 V AC, as required by the power system of each country or region.
- The appliance coupler must meet the mechanical configuration of an EN 60 320/IEC 320 Standard Sheet C13 connector for mating with the appliance inlet on the back of the tablet.

Requirements for specific countries and regions

Country/region	Accredited agency	Applicable note number
Australia	EANSW	1
Austria	OVE	1
Belgium	CEBC	1
Canada	CSA	2
Denmark	DEMKO	1
Finland	FIMKO	1
France	UTE	1

Country/region	Accredited agency	Applicable note number
Germany	VDE	1
Italy	IMQ	1
Japan	METI	3
The Netherlands	KEMA	1
Norway	NEMKO	1
The People's Republic of China	COC	5
South Korea	EK	4
Sweden	CEMKO	1
Switzerland	SEV	1
Taiwan	BSMI	4
The United Kingdom	BSI	1
The United States	UL	2

1. The flexible cord must be Type HO5VV-F, 3-conductor, 1.0-mm² conductor size. Power cord set fittings (appliance coupler and wall plug) must bear the certification mark of the agency responsible for evaluation in the country or region where it will be used.
2. The flexible cord must be Type SPT-3 or equivalent, No. 18 AWG, 3-conductor. The wall plug must be a two-pole grounding type with a NEMA 5-15P (15 A, 125 V) or NEMA 6-15P (15 A, 250 V) configuration.
3. The appliance coupler, flexible cord, and wall plug must bear a "T" mark and registration number in accordance with the Japanese Dentori Law. The flexible cord must be Type VCT or VCTF, 3-conductor, 1.00-mm² conductor size. The wall plug must be a two-pole grounding type with a Japanese Industrial Standard C8303 (7 A, 125 V) configuration.
4. The flexible cord must be Type RVV, 3-conductor, 0.75-mm² conductor size. Power cord set fittings (appliance coupler and wall plug) must bear the certification mark of the agency responsible for evaluation in the country or region where it will be used.
5. The flexible cord must be Type VCTF, 3-conductor, 0.75-mm² conductor size. Power cord set fittings (appliance coupler and wall plug) must bear the certification mark of the agency responsible for evaluation in the country or region where it will be used.

8 Recycling

When a non-rechargeable or rechargeable battery has reached the end of its useful life, do not dispose of the battery in general household waste. Follow the local laws and regulations in your area for battery disposal.

HP encourages customers to recycle used electronic hardware, HP original print cartridges, and rechargeable batteries. For more information about recycling programs, see the HP Web site at <http://www.hp.com/recycle>.

Index

- A**
 - AC adapter, spare part numbers 7, 8
 - antenna board
 - removal 21
 - spare part numbers 6, 8, 21
 - audio, product description 1
 - audio-in jack 3
 - audio-out jack 3
- B**
 - back cover, spare part number 6, 8
 - battery
 - removal 18
 - spare part number 6, 8, 18
 - bottom cover
 - removal 15
 - spare part number 6, 8, 15
 - buttons
 - power 3
 - volume control 3
- C**
 - cables, service considerations 10
 - chipset, product description 1
 - connector board
 - removal 25
 - spare part number 6, 8, 25
 - connectors, service considerations 10
 - Cover Kit, spare part number 6, 8, 15
- D**
 - delivery antenna board
 - removal 21
 - spare part number 6, 8, 21
- display panel assembly
 - removal 16
 - spare part number 5, 8, 16
- display panel, product description 1
- drives
 - precautions 11
 - preventing damage 11
- E**
 - electrostatic discharge 11
 - equipment guidelines 14
- F**
 - front-facing webcam
 - location 3
 - removal 22
 - spare part number 6, 8, 22
- G**
 - graphics, product description 1
 - grounding guidelines 11
 - guidelines
 - equipment 14
 - grounding 11
 - packaging 13
 - transporting 13
 - workstation 13
- H**
 - headphone jack 3
 - host antenna board, spare part number 6, 8
- J**
 - jacks
 - audio-in 3
 - audio-out 3
- headphone 3
- microphone 3
- M**
 - memory, product description 1
 - microphone
 - locations 3
 - product description 1
 - microphone jack 3
 - model name 1
- O**
 - operating system, product description 2
- P**
 - packaging guidelines 13
 - plastic parts, service considerations 10
 - ports
 - product description 1
 - USB 3
 - power button 3
 - power cord, set requirements 33
 - power requirements, product description 1
 - processor, product description 1
 - product description
 - audio 1
 - chipset 1
 - display panel 1
 - graphics 1
 - memory 1
 - microphone 1
 - operating system 2
 - ports 1
 - power requirements 1
 - processors 1
 - product name 1

- sensors 1
- serviceability 2
- storage 1
- video 1
- wireless 1
- product name 1

R

- rear-facing webcam
 - removal 29
 - spare part number 6, 9, 29

S

- Screw Kit, spare part number 7, 8
- sensors, product description 1
- service considerations
 - cables 10
 - connectors 10
 - plastic parts 10
- serviceability, product description 2
- Speaker Kit, spare part number 5, 8, 19
- speakers
 - location 3
 - removal 19
 - spare part number 5, 8, 19
- storage, product description 1
- system board
 - removal 27
 - spare part number 6, 8, 27

T

- tablet
 - major components 5
 - spare part numbers 8
 - specifications 32
- top cover
 - removal 15
 - spare part number 6, 8, 15
- transporting guidelines 13

U

- USB dongle, spare part number 7, 9
- USB extension cable, spare part number 7, 8
- USB port 3

V

- vibrator module
 - removal 30
 - spare part number 6, 8, 30
- video, product description 1
- volume button board
 - removal 24
 - spare part number 6, 8, 24
- volume control button 3

W

- webcam
 - removal 22, 29
 - spare part numbers 6, 8, 9, 22, 29
- wireless, product description 1
- workstation guidelines 13