



# HP Slate 6 VoiceTab Plus Tablet

Maintenance and Service Guide

**IMPORTANT!** This document is intended for  
HP authorized service providers only.

© Copyright 2014 Hewlett-Packard  
Development Company, L.P.

Bluetooth is a trademark owned by its proprietor and used by Hewlett-Packard Company under license. SD Logo is a trademark of its proprietor.

The information contained herein is subject to change without notice. The only warranties for HP products and services are set forth in the express warranty statements accompanying such products and services. Nothing herein should be construed as constituting an additional warranty. HP shall not be liable for technical or editorial errors or omissions contained herein.

First Edition: September 2014

Document Part Number: 785566-001

### **Product notice**

This guide describes features that are common to most models. Some features may not be available on your tablet.

### **Software terms**

By installing, copying, downloading, or otherwise using any software product preinstalled on this tablet, you agree to be bound by the terms of the HP End User License Agreement (EULA). If you do not accept these license terms, your sole remedy is to return the entire unused product (hardware and software) within 14 days for a refund subject to the refund policy of your place of purchase.

For any further information or to request a full refund of the tablet, please contact your local point of sale (the seller).

## Safety warning notice

---

**⚠ WARNING!** To reduce the possibility of heat-related injuries or of overheating the device, do not place the device directly on your lap or obstruct the device air vents. Use the device only on a hard, flat surface. Do not allow another hard surface, such as an adjoining optional printer, or a soft surface, such as pillows or rugs or clothing, to block airflow. Also, do not allow the AC adapter to contact the skin or a soft surface, such as pillows or rugs or clothing, during operation. The device and the AC adapter comply with the user-accessible surface temperature limits defined by the International Standard for Safety of Information Technology Equipment (IEC 60950).

---



---

# Table of contents

<b>1 Product description</b> .....	<b>1</b>
<b>2 External component identification</b> .....	<b>3</b>
<b>3 Illustrated parts catalog</b> .....	<b>5</b>
Locating the product number and the serial number .....	5
Tablet major components .....	6
Miscellaneous parts .....	7
Sequential part number listing .....	8
<b>4 Removal and replacement preliminary requirements</b> .....	<b>9</b>
Tools required .....	9
Service considerations .....	9
Plastic parts .....	9
Cables and connectors .....	9
Grounding guidelines .....	10
Electrostatic discharge damage .....	10
Packaging and transporting guidelines .....	11
Workstation guidelines .....	11
<b>5 Removal and replacement procedures</b> .....	<b>13</b>
Tablet component replacement procedures .....	13
Back cover .....	13
Battery .....	14
Middle frame .....	16
Rear-facing webcam .....	18
Antenna board .....	19
Speaker and vibrator module .....	20
System board .....	21
Front-facing webcam .....	24
Ambient light sensor board .....	25
<b>6 Specifications</b> .....	<b>27</b>

<b>7 Power cord set requirements</b> .....	<b>28</b>
Requirements for all countries .....	28
Requirements for specific countries and regions .....	28
<b>8 Recycling</b> .....	<b>30</b>
<b>Index</b> .....	<b>31</b>

# 1 Product description

Category	Description
<b>Product Name</b>	HP Slate 6 VoiceTab Plus Tablet
<b>Processor</b>	Qualcomm® MSM8926 1.20-GHz quad core processor, soldered on circuit (SoC)
<b>Panel</b>	6.0-in, (1280×720), LCD, 5-point capacitive TouchScreen display panel, bonded, full lamination, OGS; includes display panel cable and TouchScreen cable
<b>Memory</b>	Supports 1.0-GB LPDDR3 system memory
<b>Mass storage</b>	Supports a 16.0-GB eMMC solid-state drive
<b>Audio and video</b>	Forward-facing stereo speakers (2) Dual microphones (2) DTS Sound FM stereo radio Noise cancellation software 8.0-MP, auto-focus, rear-facing webcam with flash 2.0-MP, fixed-focus, front-facing webcam
<b>Sensor</b>	Accelerometer E-compass GPS/AGPS GLONASS Gyroscope P/L sensor
<b>Wireless networking</b>	<b>Network:</b> <ul style="list-style-type: none"><li>• DSDS: both support 2G/3G/4G</li><li>• GSM/GPRS/EDGE: band 2/3/5/8</li><li>• WCDMA: band 1/2/4/5</li><li>• FDD LTE: band 25/2/26/5/12/17/7/4</li><li>• Data pass: US only</li></ul> <b>Wireless:</b> <ul style="list-style-type: none"><li>• WLAN: 802.11 b/g/n (2.4 GHz)</li><li>• Bluetooth: 4.0</li><li>• LE: WLAN and Bluetooth combo</li></ul>
<b>External expansion</b>	Integrated micro SD Card Reader expandable to 32-GB
<b>Ports</b>	<ul style="list-style-type: none"><li>• Audio: headphone/microphone combo jack</li><li>• Micro USB 2.0 type-B port</li></ul>

---

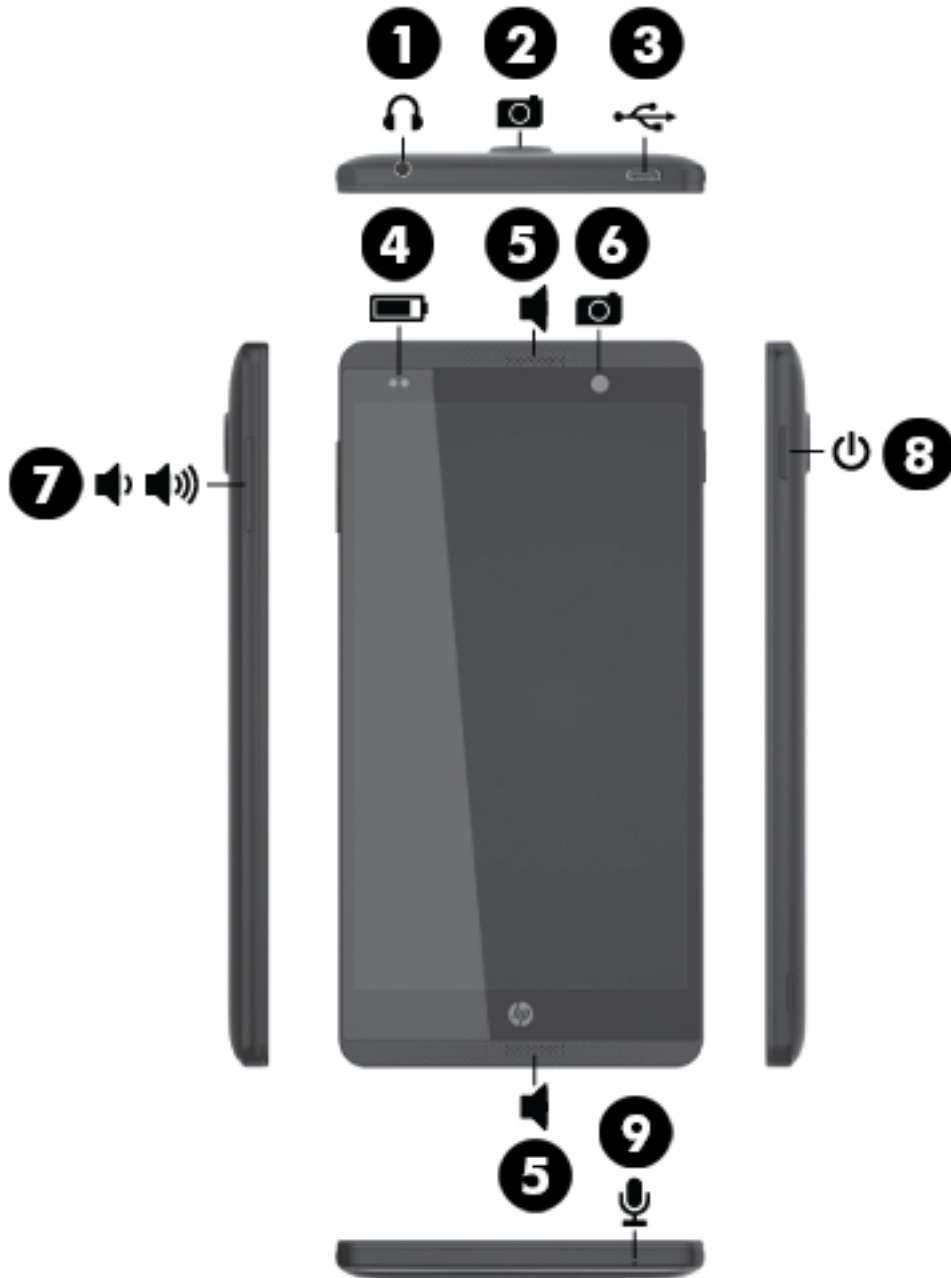
<b>Category</b>	<b>Description</b>
<b>Power requirements</b>	Supports a 3000-mAh, Li-ion battery (non-removable), USB charging Supports a 5-V, 2-A AC adapter with DC plug and localized cable plug support
<b>Operating system</b>	<b>Preinstalled:</b> Android 4.4.2
<b>Serviceability</b>	<b>End user replaceable part:</b> <ul style="list-style-type: none"><li>• AC adapter</li><li>• Headset</li><li>• USB extension cable</li></ul>

---



---

## 2 External component identification



<b>Item</b>	<b>Component</b>	<b>Item</b>	<b>Component</b>
<b>(1)</b>	Audio-out (headphone)/Audio-in (microphone) jack	<b>(6)</b>	Front-facing webcam
<b>(2)</b>	Rear-facing webcam	<b>(7)</b>	Volume control buttons (2)
<b>(3)</b>	Micro USB 2.0 port	<b>(8)</b>	Power button
<b>(4)</b>	Battery gauge	<b>(9)</b>	Microphone
<b>(5)</b>	Speakers (2)		

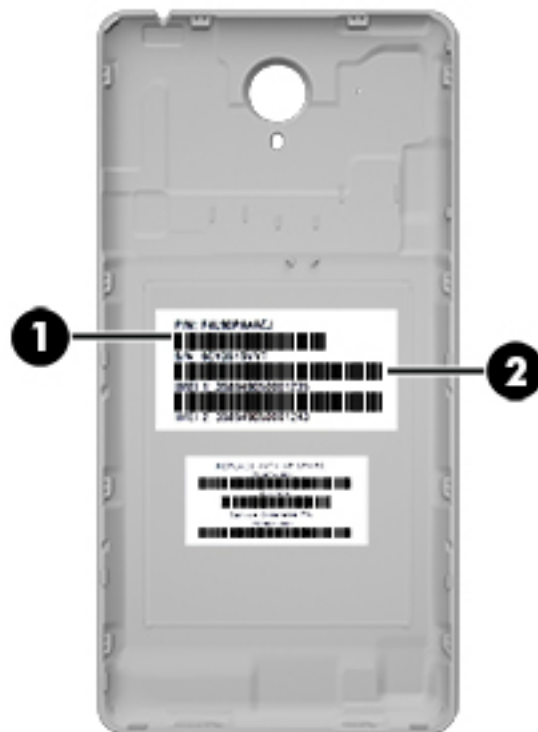
---

## 3 Illustrated parts catalog

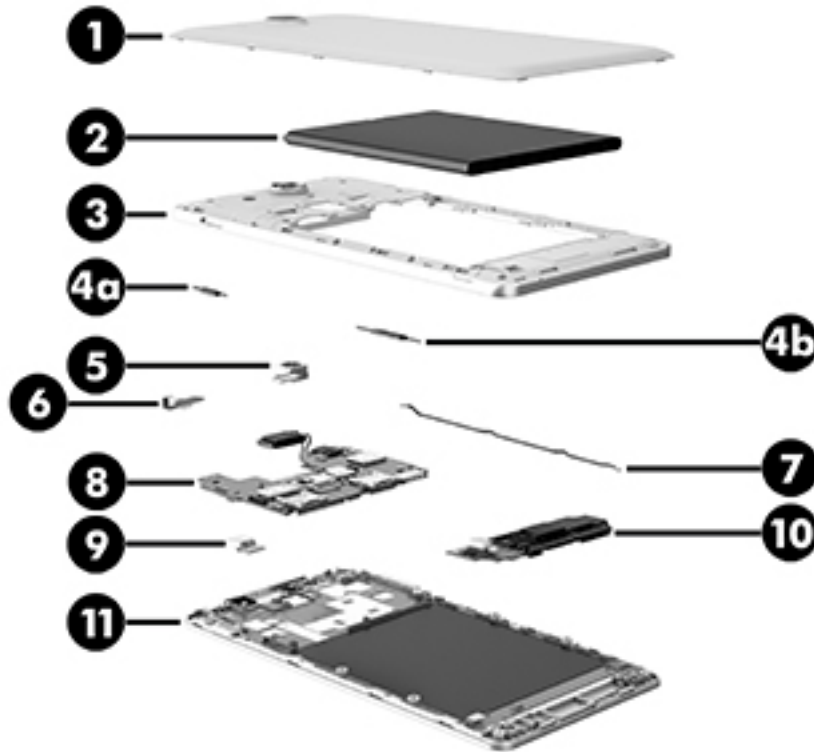
### Locating the product number and the serial number

The tablet product number (1) and serial number (2) are located inside the tablet back cover. This information may be needed when travelling internationally or when contacting support.

See [Back cover on page 13](#) for information on removing the back cover.



## Tablet major components



Item	Component	Spare part number
(1)	<b>Back cover</b>	788634-001
(2)	<b>Battery</b> , 3000-mAh (includes cable)	751655-001
(3)	<b>Middle frame</b>	788635-001
	<b>Button Actuators Kit</b> , includes:	790367-001
(4a)	Power button actuator	
(4b)	Volume button actuator	
(5)	<b>Rear-facing webcam</b> (8.0-MP, auto-focus, with flash; includes cable and double-sided adhesive)	789611-001
(6)	<b>Ambient light sensor board</b> (includes cable and double-sided adhesive)	790369-001
(7)	<b>Antenna board</b> (includes RF cable)	790366-001
(8)	<b>System board</b> equipped with a Qualcomm MSM8926 1.20-GHz quad core processor (SoC), graphics subsystem with UMA memory, 1.0-GB LPDDR3 system memory, and 16-GB eMMC hard drive (includes top speaker, which includes double-sided adhesive)	788638-001
(9)	<b>Front-facing webcam</b> (2.0-MP, fixed-focus; includes cable)	789610-001
(10)	<b>Speaker</b> (bottom, includes vibrator module and cables)	790370-001
(11)	<b>Display panel assembly</b> (6.0-in, (1280×720), LCD, 5-point capacitive TouchScreen, bonded, full lamination, OGS; includes display panel cable and TouchScreen cable)	788637-001

## Miscellaneous parts

Component	Spare part number
<b>AC adapter:</b>	
10-W, wall-mount, USB, AC adapter, non-PFC	743820-001
10-W, 5.3-V/2-A, USB, AC adapter with duck head for use in North America	744423-008
10-W, 5.3-V/2-A, USB, AC adapter with duck head for use in Europe	744423-009
<b>HP headset</b>	790368-001
<b>HP Slate 6 VoiceTab Plus Tablet</b> equipped with a Qualcomm MSM8926 1.20-GHz quad core processor (SoC), graphics subsystem with UMA memory, 1.0-GB LPDDR3 system memory, and 16-GB eMMC hard drive, and a 6.0-in, (1280×720), LCD, 5-point capacitive TouchScreen, bonded, full lamination, OGS, display panel assembly	
For use in North America	788636-001
For use in Latin America	788636-161
<b>Screw Kit</b>	751659-001
<b>SIM</b> (TMO, 3FF)	791170-001
<b>USB extension cable</b>	751600-001

## Sequential part number listing

Spare part number	Description
743820-001	10-W, wall-mount, USB, AC adapter, non-PFC
744423-008	10-W, 5.3-V/2-A, USB, AC adapter with duck head for use in North America
744423-009	10-W, 5.3-V/2-A, USB, AC adapter with duck head for use in Europe
751600-001	USB extension cable
751655-001	Battery (3000-mAh, includes cable)
751659-001	Screw Kit
788634-001	Back cover
788635-001	Middle frame
788636-001	HP Slate 6 VoiceTab Plus Tablet equipped with a Qualcomm MSM8926 1.20-GHz quad core processor (SoC), graphics subsystem with UMA memory, 1.0-GB LPDDR3 system memory, and 16-GB eMMC hard drive, and a 6.0-in, (1280×720), LCD, 5-point capacitive TouchScreen, bonded, full lamination, OGS, display panel assembly for use in North America
788636-161	HP Slate 6 VoiceTab Plus Tablet equipped with a Qualcomm MSM8926 1.20-GHz quad core processor (SoC), graphics subsystem with UMA memory, 1.0-GB LPDDR3 system memory, and 16-GB eMMC hard drive, and a 6.0-in, (1280×720), LCD, 5-point capacitive TouchScreen, bonded, full lamination, OGS, display panel assembly for use in Latin America
788637-001	Display panel assembly (6.0-in, (1280×720), LCD, 5-point capacitive TouchScreen, bonded, full lamination, OGS; includes display panel cable and TouchScreen cable)
788638-001	System board equipped with a Qualcomm MSM8926 1.20-GHz quad core processor (SoC), graphics subsystem with UMA memory, 1.0-GB LPDDR3 system memory, and 16-GB eMMC hard drive (includes top speaker, which includes double-sided adhesive)
789610-001	Front-facing webcam (2.0-MP, fixed-focus; includes cable)
789611-001	Rear-facing webcam (8.0-MP, auto-focus, with flash; includes cable and double-sided adhesive)
790366-001	Antenna board (includes RF cable)
790367-001	Button Actuators Kit (includes power button actuator and volume button actuator)
790368-001	Headset
790369-001	Ambient light sensor board (includes cable and double-sided adhesive)
790370-001	Speaker (bottom, includes vibrator module and cables)
791170-001	SIM (TMO 3FF)

---

# 4 Removal and replacement preliminary requirements

## Tools required


You will need the following tools to complete the removal and replacement procedures:

- Magnetic screw driver
- Phillips P0 screw driver
- Plastic case utility tool

## Service considerations

The following sections include some of the considerations that you must keep in mind during disassembly and assembly procedures.


---

 **NOTE:** As you remove each subassembly from the tablet, place the subassembly (and all accompanying screws) away from the work area to prevent damage.

---

## Plastic parts


---

 **CAUTION:** Using excessive force during disassembly and reassembly can damage plastic parts. Use care when handling the plastic parts. Apply pressure only at the points designated in the maintenance instructions.

---

## Cables and connectors

---

 **CAUTION:** When servicing the tablet, be sure that cables are placed in their proper locations during the reassembly process. Improper cable placement can damage the tablet.

---

Cables must be handled with extreme care to avoid damage. Apply only the tension required to unseat or seat the cables during removal and insertion. Handle cables by the connector whenever possible. In all cases, avoid bending, twisting, or tearing cables. Be sure that cables are routed in such a way that they cannot be caught or snagged by parts being removed or replaced. Handle flex cables with extreme care; these cables tear easily.

# Grounding guidelines

## Electrostatic discharge damage

Electronic components are sensitive to electrostatic discharge (ESD). Circuitry design and structure determine the degree of sensitivity. Networks built into many integrated circuits provide some protection, but in many cases, ESD contains enough power to alter device parameters or melt silicon junctions.

A discharge of static electricity from a finger or other conductor can destroy static-sensitive devices or microcircuitry. Even if the spark is neither felt nor heard, damage may have occurred.

An electronic device exposed to ESD may not be affected at all and can work perfectly throughout a normal cycle. Or the device may function normally for a while, then degrade in the internal layers, reducing its life expectancy.

**⚠ CAUTION:** To prevent damage to the tablet when you are removing or installing internal components, observe these precautions:

Keep components in their electrostatic-safe containers until you are ready to install them.

Before touching an electronic component, discharge static electricity by using the guidelines described in this section.

Avoid touching pins, leads, and circuitry. Handle electronic components as little as possible.

If you remove a component, place it in an electrostatic-safe container.

The following table shows how humidity affects the electrostatic voltage levels generated by different activities.

**⚠ CAUTION:** A product can be degraded by as little as 700 V.

Typical electrostatic voltage levels			
Event	Relative humidity		
	10%	40%	55%
Walking across carpet	35,000 V	15,000 V	7,500 V
Walking across vinyl floor	12,000 V	5,000 V	3,000 V
Motions of bench worker	6,000 V	800 V	400 V
Removing DIPS from plastic tube	2,000 V	700 V	400 V
Removing DIPS from vinyl tray	11,500 V	4,000 V	2,000 V
Removing DIPS from Styrofoam	14,500 V	5,000 V	3,500 V
Removing bubble pack from PCB	26,500 V	20,000 V	7,000 V
Packing PCBs in foam-lined box	21,000 V	11,000 V	5,000 V



## Packaging and transporting guidelines

Follow these grounding guidelines when packaging and transporting equipment:

- To avoid hand contact, transport products in static-safe tubes, bags, or boxes.
- Protect ESD-sensitive parts and assemblies with conductive or approved containers or packaging.
- Keep ESD-sensitive parts in their containers until the parts arrive at static-free workstations.
- Place items on a grounded surface before removing items from their containers.
- Always be properly grounded when touching a component or assembly.
- Store reusable ESD-sensitive parts from assemblies in protective packaging or nonconductive foam.
- Use transporters and conveyors made of antistatic belts and roller bushings. Be sure that mechanized equipment used for moving materials is wired to ground and that proper materials are selected to avoid static charging. When grounding is not possible, use an ionizer to dissipate electric charges.

## Workstation guidelines

Follow these grounding workstation guidelines:

- Cover the workstation with approved static-shielding material.
- Use a wrist strap connected to a properly grounded work surface and use properly grounded tools and equipment.
- Use conductive field service tools, such as cutters, screw drivers, and vacuums.
- When fixtures must directly contact dissipative surfaces, use fixtures made only of static-safe materials.
- Keep the work area free of nonconductive materials, such as ordinary plastic assembly aids and Styrofoam.
- Handle ESD-sensitive components, parts, and assemblies by the case or PCM laminate. Handle these items only at static-free workstations.
- Avoid contact with pins, leads, or circuitry.
- Turn off power and input signals before inserting or removing connectors or test equipment.

## Equipment guidelines

Grounding equipment must include either a wrist strap or a foot strap at a grounded workstation.

- When seated, wear a wrist strap connected to a grounded system. Wrist straps are flexible straps with a minimum of one megohm  $\pm 10\%$  resistance in the ground cords. To provide proper ground, wear a strap snugly against the skin at all times. On grounded mats with banana-plug connectors, use alligator clips to connect a wrist strap.
- When standing, use foot straps and a grounded floor mat. Foot straps (heel, toe, or boot straps) can be used at standing workstations and are compatible with most types of shoes or boots. On conductive floors or dissipative floor mats, use foot straps on both feet with a minimum of one megohm resistance between the operator and ground. To be effective, the conductive must be worn in contact with the skin.

The following grounding equipment is recommended to prevent electrostatic damage:

- Antistatic tape
- Antistatic smocks, aprons, and sleeve protectors
- Conductive bins and other assembly or soldering aids
- Nonconductive foam
- Conductive tabletop workstations with ground cords of one megohm resistance
- Static-dissipative tables or floor mats with hard ties to the ground
- Field service kits
- Static awareness labels
- Material-handling packages
- Nonconductive plastic bags, tubes, or boxes
- Metal tote boxes
- Electrostatic voltage levels and protective materials

The following table lists the shielding protection provided by antistatic bags and floor mats.

Material	Use	Voltage protection level
Antistatic plastics	Bags	1,500 V
Carbon-loaded plastic	Floor mats	7,500 V
Metallized laminate	Floor mats	5,000 V

# 5 Removal and replacement procedures

## Tablet component replacement procedures

**⚠ CAUTION:** Tablet components described in this chapter should only be accessed by an authorized service provider. Accessing these parts can damage the tablet and void the warranty.

This chapter provides removal and replacement procedures for authorized service provider only parts.

There are as many as 12 screws that must be removed, replaced, and/or loosened when servicing the tablet. Make special note of each screw size and location during removal and replacement.

### Back cover

Description	Spare part number
Back cover	788634-001
Display panel assembly (6.0-in, (1280×720), LCD, 5-point capacitive TouchScreen, bonded, full lamination, OGS; includes display panel cable and TouchScreen cable)	788637-001

Before disassembling the tablet, follow these steps:

1. Turn off the tablet. If you are unsure whether the tablet is off or in Hibernation, turn the tablet on, and then shut it down through the operating system.
2. Disconnect the power from the tablet by unplugging the power cord from the tablet.
3. Disconnect all external devices from the tablet.

Remove the back cover:

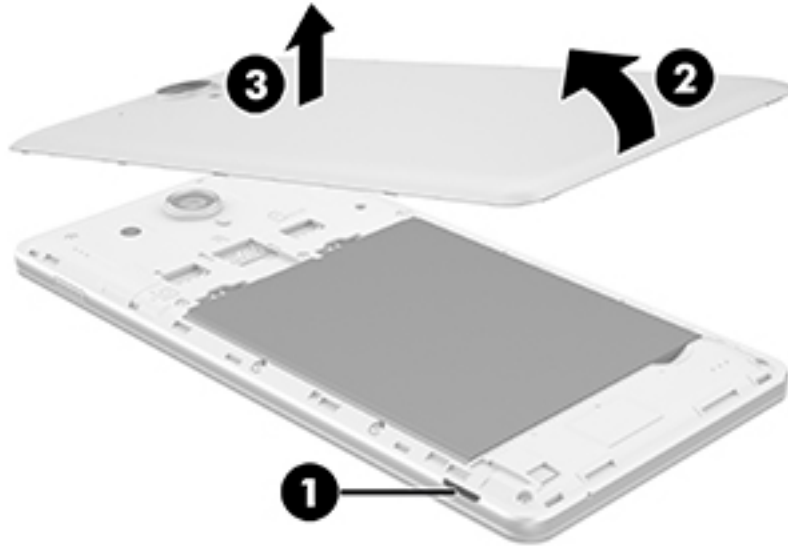
**⚠ CAUTION:** Before turning the display panel assembly upside down, make sure the work surface is clear of tools, screws, and any other foreign objects. Failure to follow this caution can result in damage to the display panel assembly.

1. Place the tablet on a flat surface, display panel side down, with the power button toward you.

**⚠ CAUTION:** When inserting the plastic tool into the tablet as described in Step 2, make sure not to insert the tool into the volume control buttons area. Failure to follow this caution can result in damage to the tablet.

2. Use the finger notch **(1)** to release the bottom edge of the back cover **(2)** from the display panel assembly.

3. Remove the back cover (3).



Reverse this procedure to install the back cover.

## Battery

Description	Spare part number
Battery, 3000-mAh, (includes cable)	751655-001

Before removing the battery, follow these steps:

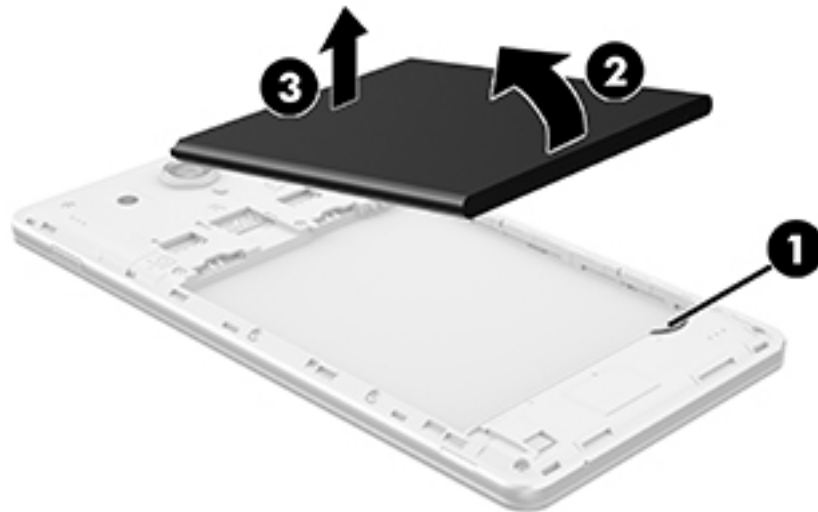
1. Turn off the tablet. If you are unsure whether the tablet is off or in Hibernation, turn the tablet on, and then shut it down through the operating system.
2. Disconnect the power from the tablet by unplugging the power cord from the tablet.
3. Disconnect all external devices from the tablet.
4. Remove the back cover (see [Back cover on page 13](#)).

**⚠ WARNING!** To reduce potential safety issues, use only the battery provided with the tablet, a replacement battery provided by HP, or a compatible battery purchased from HP.

**⚠ CAUTION:** Removing a battery that is the sole power source for the tablet can cause loss of information. To prevent loss of information, save your work or shut down the tablet through Windows before removing the battery.

Remove the battery:

1. Use the finger notch (1) to release the bottom edge of the battery (2) from the middle frame.
2. Remove the battery (3).



Reverse this procedure to install the battery.

## Middle frame

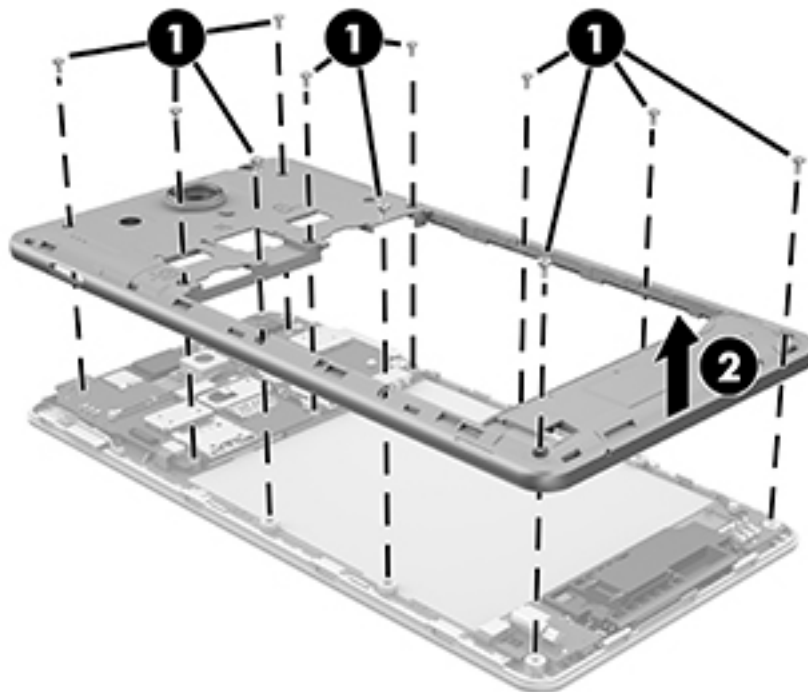
Description	Spare part number
Middle frame	788635-001


Before removing the middle frame, follow these steps:

1. Turn off the tablet. If you are unsure whether the tablet is off or in Hibernation, turn the tablet on, and then shut it down through the operating system.
2. Disconnect the power from the tablet by unplugging the power cord from the tablet.
3. Disconnect all external devices from the tablet.
4. Remove the back cover (see [Back cover on page 13](#)).
5. Remove the battery (see [Battery on page 14](#)).

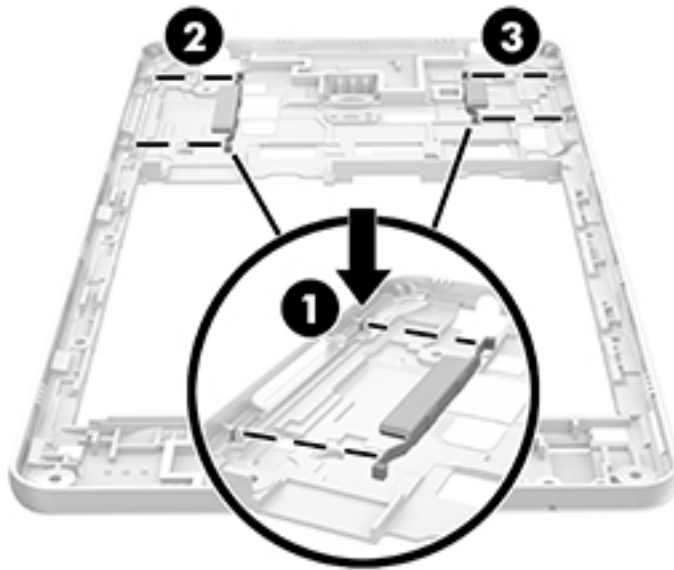
Remove the middle frame:

1. Remove the eleven Phillips PM1.3×3.3 screws (1) that secure the middle frame to the display panel assembly.
2. Remove the middle frame (2).



 **NOTE:** If the power button actuator or the volume button actuator should become displaced during the removal of the middle frame, install the actuators into the openings in the middle frame as indicated in the following illustration. The fingers (1) on the ends of the actuators should be installed on the slots (2) and (3) on the middle frame.

The actuators are included in the Button Actuators Kit, spare part number 790367-001.



Reverse this procedure to install the middle frame.

## Rear-facing webcam

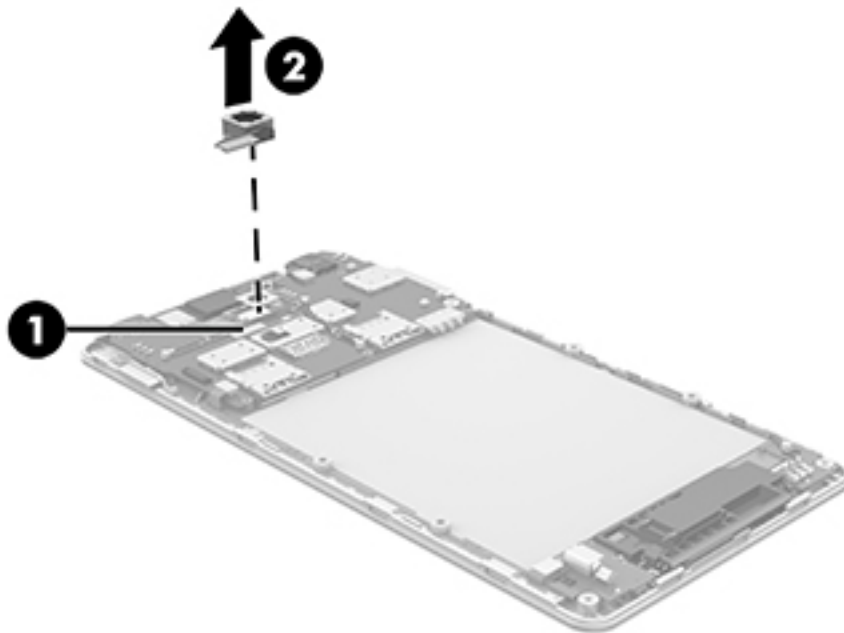
Description	Spare part number
Rear-facing webcam (8.0-MP, auto-focus, with flash; includes cable and double-sided adhesive)	789611-001

Before removing the rear-facing webcam, follow these steps:

1. Turn off the tablet. If you are unsure whether the tablet is off or in Hibernation, turn the tablet on, and then shut it down through the operating system.
2. Disconnect the power from the tablet by unplugging the power cord from the tablet.
3. Disconnect all external devices from the tablet.
4. Remove the back cover (see [Back cover on page 13](#)).
5. Remove the battery (see [Battery on page 14](#)).
6. Remove the middle frame (see [Middle frame on page 16](#)).

Remove the rear-facing webcam:

1. Disconnect the rear-facing webcam cable (1) from the system board.
2. Detach the rear-facing webcam (2) from the display panel assembly. (The rear-facing webcam is attached to the display panel assembly with double-sided adhesive.)



3. Remove the rear-facing webcam and cable.

Reverse this procedure to install the rear-facing webcam.



# Antenna board

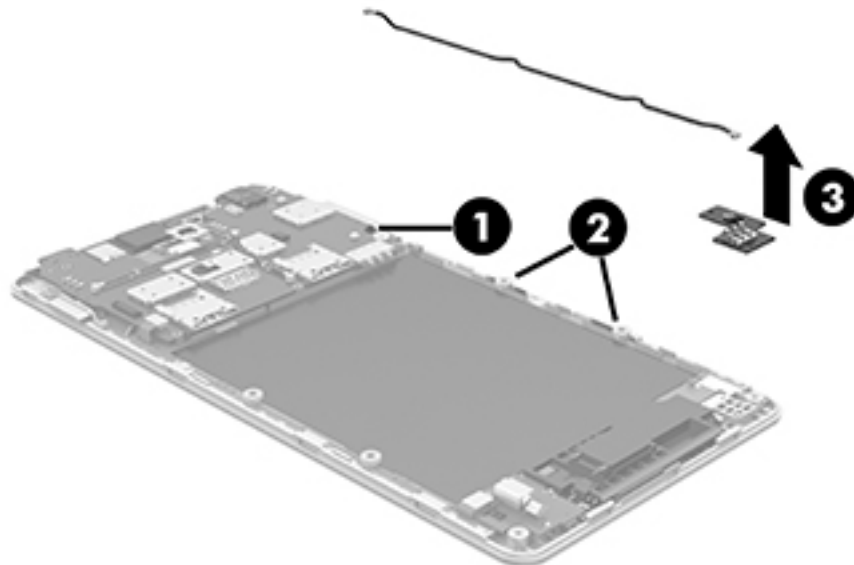
Description	Spare part number
Antenna board (includes RF cable and double-sided adhesive)	773133-001

Before removing the antenna board, follow these steps:

1. Turn off the tablet. If you are unsure whether the tablet is off or in Hibernation, turn the tablet on, and then shut it down through the operating system.
2. Disconnect the power from the tablet by unplugging the power cord from the tablet.
3. Disconnect all external devices from the tablet.
4. Remove the back cover (see [Back cover on page 13](#)).
5. Remove the battery (see [Battery on page 14](#)).
6. Middle frame (see [Middle frame on page 16](#))

Remove the antenna board:

1. Disconnect the RF antenna cable from the system board antenna terminal (1).
2. Release the RF antenna from the retention clips (2) built into the display panel assembly.
3. Detach the antenna board (3) from the display panel assembly. (The antenna board is attached to the display panel assembly with double-sided adhesive.)



4. Remove the antenna and RF cable.

Reverse this procedure to install the antenna board.

## Speaker and vibrator module

Description	Spare part number
Speaker (bottom, includes vibrator module, double-sided adhesive, and cables)	790370-001

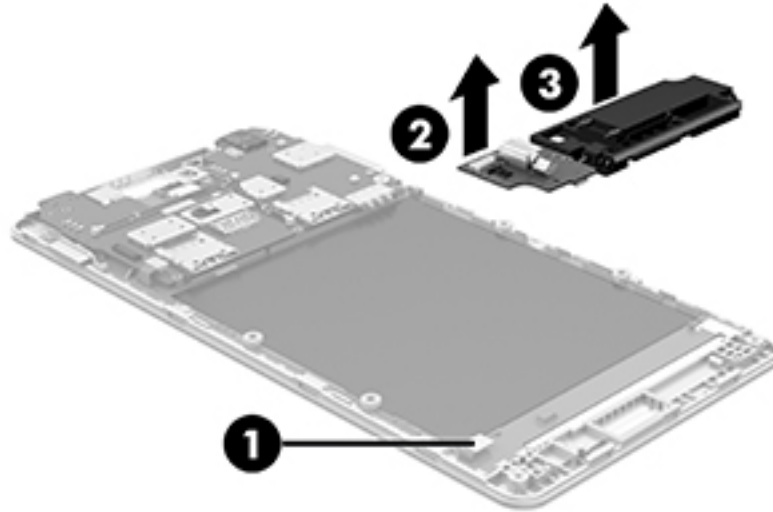
Before removing the bottom speaker and vibrator module, follow these steps:

1. Turn off the tablet. If you are unsure whether the tablet is off or in Hibernation, turn the tablet on, and then shut it down through the operating system.
2. Disconnect the power from the tablet by unplugging the power cord from the tablet.
3. Disconnect all external devices from the tablet.
4. Remove the back cover (see [Back cover on page 13](#)).
5. Remove the battery (see [Battery on page 14](#)).
6. Remove the Middle frame (see [Middle frame on page 16](#)).

Remove the speaker and vibrator module:

1. Disconnect the vibrator module cable **(1)** from the vibrator module.
2. Detach the vibrator module **(2)** from the display panel assembly. (The vibrator module is attached to the display panel assembly with double-sided adhesive.)

3. Release the bottom speaker (3) from the molding built into the display panel assembly.



4. Remove the bottom speaker and vibrator module.

Reverse this procedure to install the bottom speaker and vibrator module.

## System board

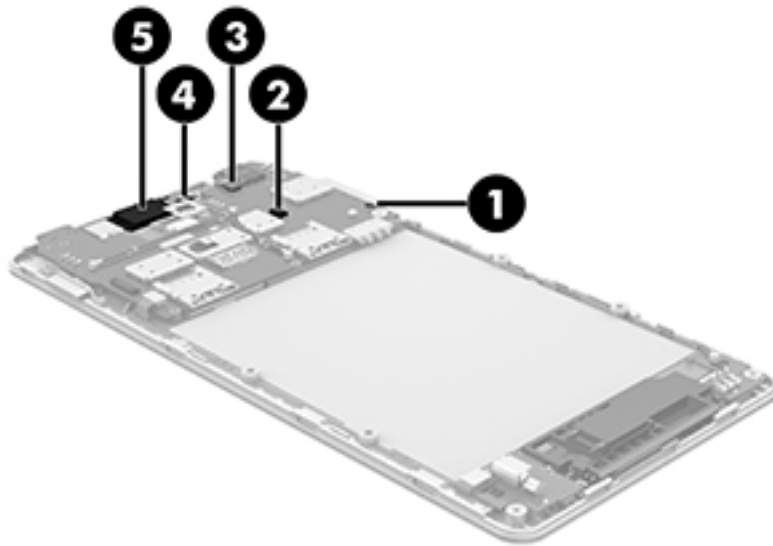
Description	Spare part number
System board equipped with a Qualcomm MSM8926 1.20-GHz quad core processor (SoC), graphics subsystem with UMA memory, 1.0-GB LPDDR3 system memory, and 16-GB eMMC hard drive (includes top speaker)	788638-001

Before removing the system board, follow these steps:

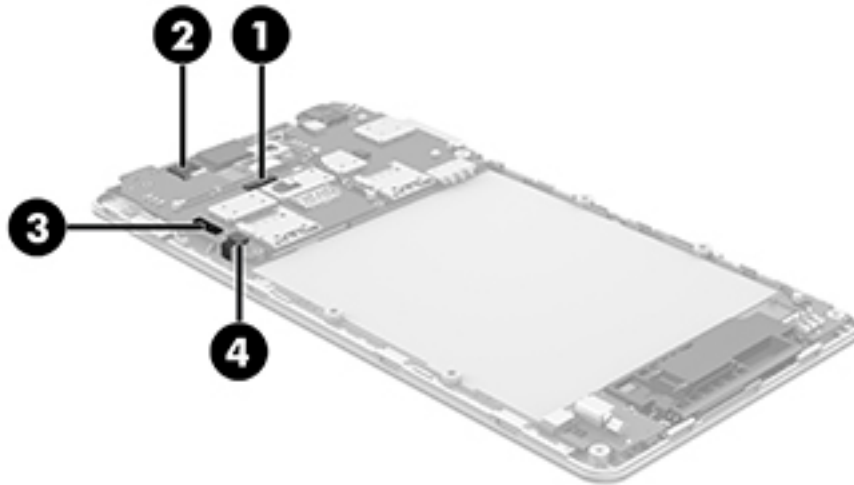
1. Turn off the tablet. If you are unsure whether the tablet is off or in Hibernation, turn the tablet on, and then shut it down through the operating system.
2. Disconnect the power from the tablet by unplugging the power cord from the tablet.
3. Disconnect all external devices from the tablet.
4. Remove the back cover (see [Back cover on page 13](#)).
5. Remove the battery (see [Battery on page 14](#)).
6. Remove the middle frame (see [Middle frame on page 16](#)).

Remove the system board:

1. Disconnect the following cables from the system board:
  - (1) RF antenna cable
  - (2) Ambient light sensor board cable
  - (3) TouchScreen cable
2. Release the top speaker cable (4) from the clip built into the display panel assembly.xxx
3. Detach the top speaker (5) from the display panel assembly. (The top speaker is attached to the display panel assembly with double-sided adhesive.)

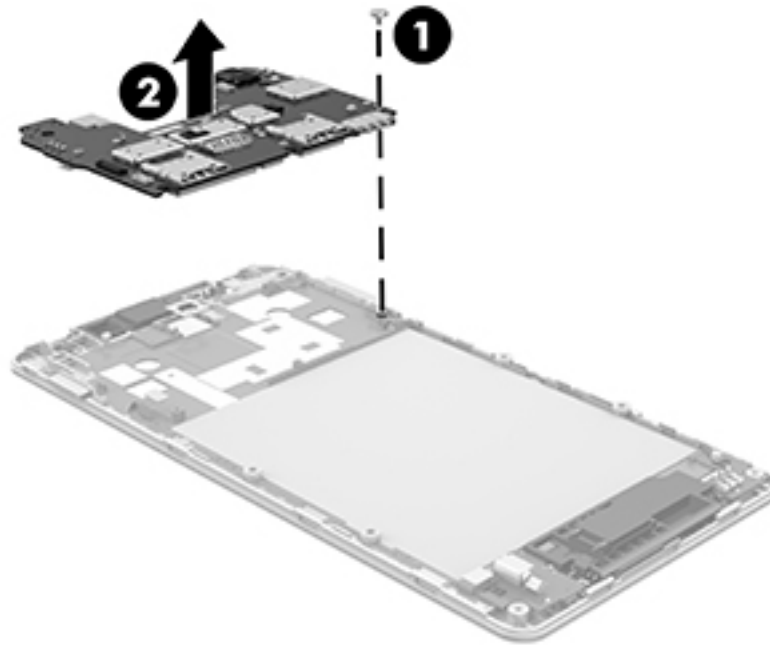


4. Disconnect the following cables from the system board:
  - (1) Rear-facing webcam cable
  - (2) Front-facing webcam cable
  - (3) Display panel cable
  - (4) Vibrator module cable



5. Remove the Phillips PM1.3×3.3 screw (1) that secures the system board to the display panel assembly.

6. Remove the system board (2).



Reverse this procedure to install the system board.

## Front-facing webcam

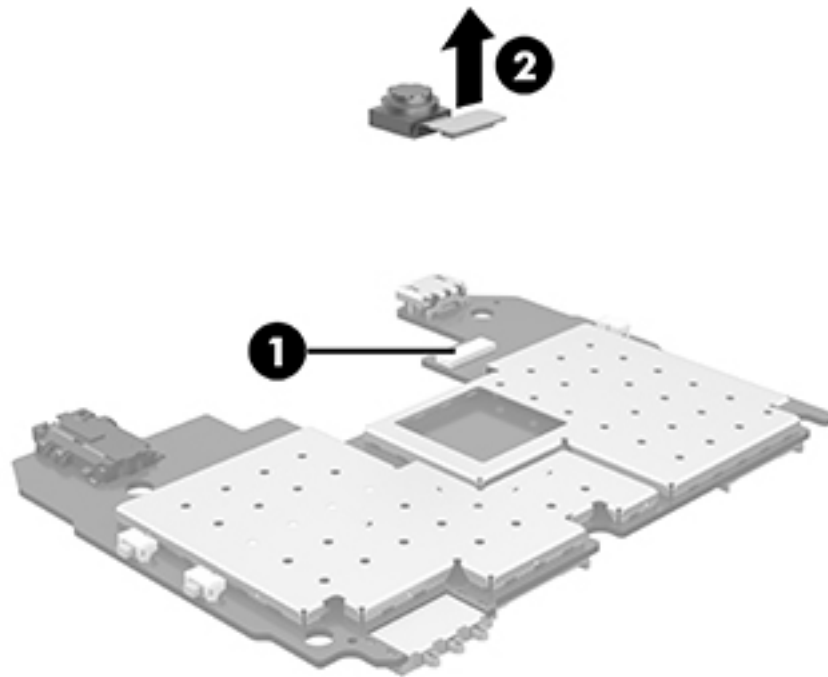
Description	Spare part number
Front-facing webcam (2.0-MP, fixed-focus; includes cable)	789610-001

Before removing the front-facing webcam, follow these steps:

1. Turn off the tablet. If you are unsure whether the tablet is off or in Hibernation, turn the tablet on, and then shut it down through the operating system.
2. Disconnect the power from the tablet by unplugging the power cord from the tablet.
3. Disconnect all external devices from the tablet.
4. Remove the back cover (see [Back cover on page 13](#)), and then remove the following components:
  - a. Battery (see [Battery on page 14](#))
  - b. Middle frame (see [Middle frame on page 16](#))
  - c. System board (see [System board on page 21](#))

Remove the front-facing webcam:

1. Turn the system board upside down.
2. Disconnect the front-facing webcam cable (1) from the system board.
3. Remove the front-facing webcam (2).



Reverse this procedure to install the front-facing webcam.

## Ambient light sensor board

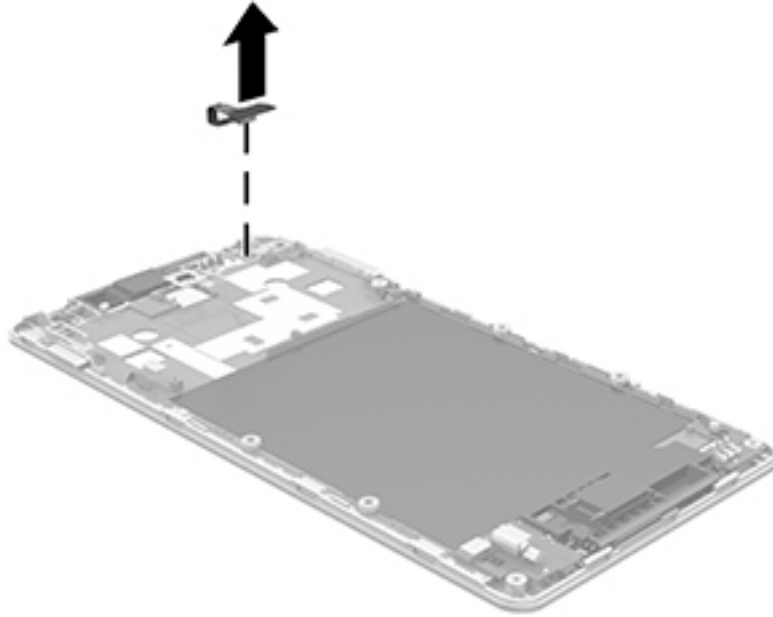
Description	Spare part number
Ambient light sensor board (includes cable and double-sided adhesive)	790369-001

Before removing the ambient light sensor board, follow these steps:

1. Turn off the tablet. If you are unsure whether the tablet is off or in Hibernation, turn the tablet on, and then shut it down through the operating system.
2. Disconnect the power from the tablet by unplugging the power cord from the tablet.
3. Disconnect all external devices from the tablet.
4. Remove the back cover (see [Back cover on page 13](#)), and then remove the following components:
  - a. Battery (see [Battery on page 14](#))
  - b. Middle frame (see [Middle frame on page 16](#))
  - c. System board (see [System board on page 21](#))

Remove the ambient light sensor board:

1. Detach the ambient light sensor board from the display panel assembly. (The ambient light sensor board is attached to the display panel assembly with double-sided adhesive.)



2. Remove the ambient light sensor board and cable.

Reverse this procedure to install the ambient light sensor board.



# 6 Specifications

	Metric	U.S.
<b>Dimensions</b> (portrait orientation)		
Width	8.32 cm	3.28 in
Height	16.51 cm	6.50 in
Depth	0.89 cm	0.35 in
Weight	160 g	0.35 lb
<b>Input power</b>		
The tablet operates on DC power, which can be supplied by an AC or a DC power source. The AC power source must be rated 100—240 V, 50/60 Hz.		
<b>NOTE:</b> The tablet can operate on DC power using an industry-standard micro-B USB cable. The HP adapter included with the tablet is recommended for charging the tablet.		
<b>Temperature</b>		
Operating	5°C to 35°C	41°F to 95°F
Nonoperating	-20°C to 60°C	-4°F to 140°F
<b>Relative humidity</b> (non-condensing)		
Operating	10% to 90%	
Nonoperating	5% to 95%	
<b>Maximum altitude</b> (unpressurized)		
Operating	-15 m to 3,048 m	-50 ft to 10,000 ft
Nonoperating	-15 m to 12,192 m	-50 ft to 40,000 ft
<b>NOTE:</b> Applicable product safety standards specify thermal limits for plastic surfaces. The device operates well within this range of temperatures.		

# 7 Power cord set requirements

The wide-range input feature of the tablet permits it to operate from any line voltage from 100 to 120 volts AC, or from 220 to 240 volts AC.

The 3-conductor power cord set included with the tablet meets the requirements for use in the country or region where the equipment is purchased.

Power cord sets for use in other countries and regions must meet the requirements of the country or region where the tablet is used.

## Requirements for all countries

The following requirements are applicable to all countries and regions:

- The length of the power cord set must be at least 1.0 m (3.3 ft) and no more than 2.0 m (6.5 ft).
- All power cord sets must be approved by an acceptable accredited agency responsible for evaluation in the country or region where the power cord set will be used.
- The power cord sets must have a minimum current capacity of 10 amps and a nominal voltage rating of 125 or 250 V AC, as required by the power system of each country or region.
- The appliance coupler must meet the mechanical configuration of an EN 60 320/IEC 320 Standard Sheet C13 connector for mating with the appliance inlet on the back of the tablet.

## Requirements for specific countries and regions

Country/region	Accredited agency	Applicable note number
Australia	EANSW	1
Austria	OVE	1
Belgium	CEBC	1
Canada	CSA	2
Denmark	DEMKO	1
Finland	FIMKO	1
France	UTE	1
Germany	VDE	1
Italy	IMQ	1
Japan	METI	3
The Netherlands	KEMA	1
Norway	NEMKO	1
The People's Republic of China	COC	5
South Korea	EK	4

Country/region	Accredited agency	Applicable note number
Sweden	CEMKO	1
Switzerland	SEV	1
Taiwan	BSMI	4
The United Kingdom	BSI	1
The United States	UL	2

1. The flexible cord must be Type HO5VV-F, 3-conductor, 1.0-mm<sup>2</sup> conductor size. Power cord set fittings (appliance coupler and wall plug) must bear the certification mark of the agency responsible for evaluation in the country or region where it will be used.
2. The flexible cord must be Type SPT-3 or equivalent, No. 18 AWG, 3-conductor. The wall plug must be a two-pole grounding type with a NEMA 5-15P (15 A, 125 V) or NEMA 6-15P (15 A, 250 V) configuration.
3. The appliance coupler, flexible cord, and wall plug must bear a "T" mark and registration number in accordance with the Japanese Dentori Law. The flexible cord must be Type VCT or VCTF, 3-conductor, 1.00-mm<sup>2</sup> conductor size. The wall plug must be a two-pole grounding type with a Japanese Industrial Standard C8303 (7 A, 125 V) configuration.
4. The flexible cord must be Type RVV, 3-conductor, 0.75-mm<sup>2</sup> conductor size. Power cord set fittings (appliance coupler and wall plug) must bear the certification mark of the agency responsible for evaluation in the country or region where it will be used.
5. The flexible cord must be Type VCTF, 3-conductor, 0.75-mm<sup>2</sup> conductor size. Power cord set fittings (appliance coupler and wall plug) must bear the certification mark of the agency responsible for evaluation in the country or region where it will be used.

---

## 8 Recycling

When a non-rechargeable or rechargeable battery has reached the end of its useful life, do not dispose of the battery in general household waste. Follow the local laws and regulations in your area for battery disposal.

HP encourages customers to recycle used electronic hardware, HP original print cartridges, and rechargeable batteries. For more information about recycling programs, see the HP Web site at <http://www.hp.com/recycle>.

---

# Index

## A

AC adapter, spare part numbers 7, 8  
ambient light sensor board  
removal 25  
spare part number 6, 8, 25  
antenna board  
removal 19  
spare part number 6, 8, 19  
audio, product description 1  
audio-in jack 4  
audio-out jack 4

## B

back cover  
removal 13  
spare part number 6, 8, 13  
battery  
removal 14  
spare part number 6, 8, 14  
battery gauge 4  
Button Actuators Kit, spare part number 6, 8  
buttons  
power 4  
volume control 4

## C

cables, service considerations 9  
connectors, service considerations 9

## D

display panel assembly, spare part number 6, 8, 13  
display panel, product description 1

## E

electrostatic discharge 10  
equipment guidelines 12  
external expansion, product description 1

## F

front-facing webcam  
location 4  
removal 24  
spare part number 6, 8, 24

## G

grounding guidelines 10  
guidelines  
equipment 12  
grounding 10  
packaging 11  
transporting 11  
workstation 11

## H

headphone jack 4  
headset, spare part number 7, 8

## J

jacks  
audio-in 4  
audio-out 4  
headphone 4  
microphone 4

## M

mass storage device, product description 1  
memory module, product description 1  
microphone  
location 4  
product description 1  
microphone jack 4  
middle frame  
removal 16  
spare part number 6, 8, 16  
model name 1

## O

operating system, product description 2

## P

packaging guidelines 11  
plastic parts, service considerations 9  
ports  
product description 1  
USB 2.0 4  
power button 4  
power button actuator  
installation 17  
spare part number 8  
power cord, set requirements 28  
power requirements, product description 2  
processor, product description 1  
product description  
audio 1  
display panel 1  
external expansion 1  
mass storage 1  
memory module 1  
microphone 1  
operating system 2  
ports 1  
power requirements 2  
processors 1  
product name 1  
sensor 1  
serviceability 2  
video 1  
wireless networking 1  
product name 1

## R

rear-facing webcam  
location 4  
removal 18  
spare part number 6, 8, 18

## S

Screw Kit, spare part number 7, 8  
sensor, product description 1  
service considerations  
cables 9

- connectors 9
- plastic parts 9
- serviceability, product
  - description 2
- SIM, spare part number 7, 8
- speaker
  - location 4
  - removal 20
  - spare part number 6, 8, 20
- system board
  - removal 21
  - spare part number 6, 8, 21

## T

- tablet
  - major components 6
  - spare part numbers 7, 8
  - specifications 27
- tools required 9
- transporting guidelines 11

## U

- USB 2.0 port 4
- USB extension cable, spare part number 7, 8

## V

- vibrator module
  - removal 20
  - spare part number 6, 8, 20
- video, product description 1
- volume button actuator
  - installation 17
  - spare part number 8
- volume control buttons 4

## W

- webcam
  - removal 18, 24
  - spare part numbers 6, 8, 18, 24
- wireless networking, product description 1
- workstation guidelines 11