



**HP Pro Slate 10 EE G1
HP Pro Tablet 10 EE G1**

**Maintenance and Service Guide
IMPORTANT! This document is intended for
HP authorized service providers only.**

© Copyright 2015 Hewlett-Packard
Development Company, L.P.

Bluetooth is a trademark owned by its
proprietor and used by Hewlett-Packard
Company under license. SD Logo is a
trademark of its proprietor.

The information contained herein is subject to
change without notice. The only warranties for
HP products and services are set forth in
the express warranty statements
accompanying such products and services.
Nothing herein should be construed as
constituting an additional warranty. HP shall
not be liable for technical or editorial errors or
omissions contained herein.

First Edition: January 2015

Document Part Number: 797049-001

Product notice

This guide describes features that are common
to most models. Some features may not be
available on your tablet.

Software terms

By installing, copying, downloading, or
otherwise using any software product
preinstalled on this tablet, you agree to be
bound by the terms of the HP End User License
Agreement (EULA). If you do not accept these
license terms, your sole remedy is to return the
entire unused product (hardware and
software) within 14 days for a refund subject
to the refund policy of your place of purchase.

For any further information or to request a full
refund of the tablet, please contact your local
point of sale (the seller).

Safety warning notice


 **WARNING!** To reduce the possibility of heat-related injuries or of overheating the device, do not place the device directly on your lap or obstruct the device air vents. Use the device only on a hard, flat surface. Do not allow another hard surface, such as an adjoining optional printer, or a soft surface, such as pillows or rugs or clothing, to block airflow. Also, do not allow the AC adapter to contact the skin or a soft surface, such as pillows or rugs or clothing, during operation. The device and the AC adapter comply with the user-accessible surface temperature limits defined by the International Standard for Safety of Information Technology Equipment (IEC 60950).

Table of contents

1 Product description	1
2 External component identification	5
3 Illustrated parts catalog	6
Locating the serial number, product number, and model number	6
Tablet major components	7
Miscellaneous parts	11
4 Removal and replacement preliminary requirements	13
Tools required	13
Service considerations	13
Plastic parts	13
Cables and connectors	13
Grounding guidelines	14
Electrostatic discharge damage	14
Packaging and transporting guidelines	15
Workstation guidelines	15
5 Removal and replacement procedures	17
Tablet component replacement procedures	17
HP Touchpoint Manager software (HP Pro Slate 10 EE G1 tablet models only)	17
Unlocking the device and disabling Always On Remote Management (HP Pro Tablet 10 EE G1 tablet models only)	17
Back cover	18
Battery	19
WWAN module	20
Rear-facing webcam	22
Wireless antenna	23
Sensor board	27
Display panel cable	28
Power connector cable	29
Front-facing webcam	30
Transfer board	31
Speaker	33
System board	35

I/O cover	39
6 Using HP PC Hardware Diagnostics (UEFI)	41
Downloading HP PC Hardware Diagnostics (UEFI) to a USB device	41
7 Specifications	42
8 Backup and recovery	43
Backing up your information	43
Performing a system recovery	44
Changing the boot device order	44
Using Windows Refresh or Windows Reset	44
9 Statement of memory volatility	45
Nonvolatile memory usage	47
Questions and answers	49
Using HP Sure Start (select models only)	50
10 Power cord set requirements	51
Requirements for all countries	51
Requirements for specific countries and regions	51
11 Recycling	53
Index	54

1 Product description

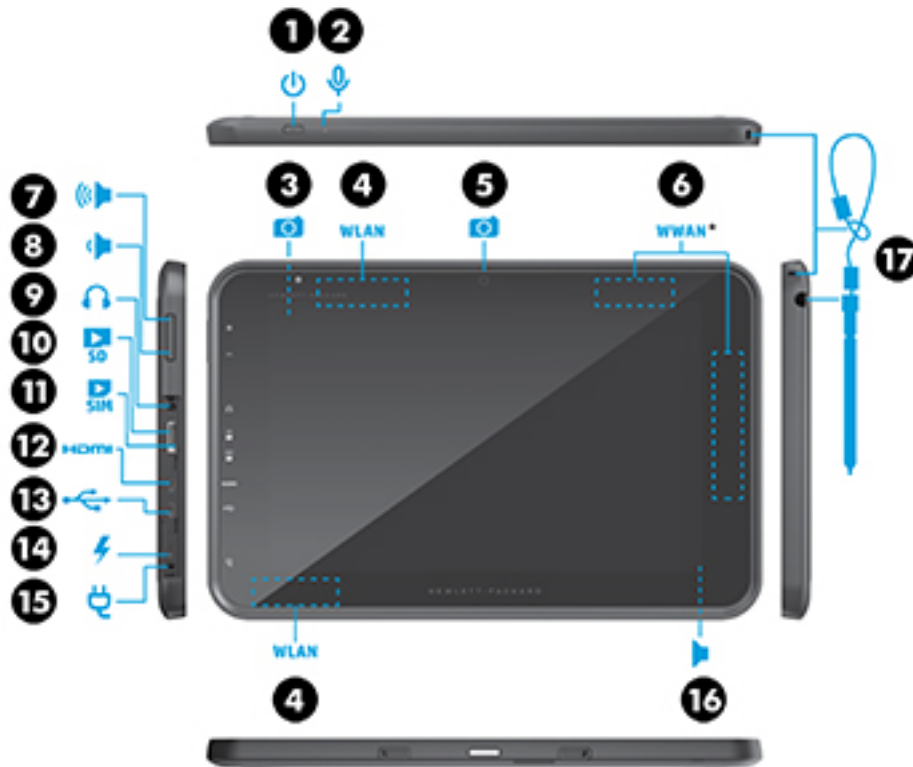
Category	Description	HP Pro Slate 10 EE G1	HP Pro Tablet 10 EE G1
Product Name	HP Pro Slate 10 EE G1	√	
	HP Pro Tablet 10 EE G1		√
Processor	Intel® Atom™ Z3735F 1.83-GHz processor (quad core)	√	√
	Intel Atom Z3735G 1.83-GHz processor (quad core)		
Panel	10.1-in, (1280×800), WXGA, AntiGlare (AG), ultraslim, light-emitting (LED) backlit, 10-point IPS capacitive TouchScreen display panel	√	√
Graphics	Intel HD Graphics with universal memory architecture (UMA)	√	√
Stylus	Support for passive stylus with 2.2-mm tip	√	√
	Stylus garage located on back cover		
Memory	Memory integrated onto system board	√	√
	Support for the following memory configurations: <ul style="list-style-type: none"> 2.0-GB, (4-Gbit, 256-MB × 16 DDR3L, qty 4) 1.0-GB, (4-Gbit, 256-MB × 16 DDR3L, qty 2) 		
Mass storage	Embedded MultiMedia Card (eMMC) NAND flash v 5.0, in 32.0- and 16.0-GB configurations	√	
	Embedded MultiMedia Card (eMMC) NAND flash v 5.0, in 64.0- and 32.0-GB configurations		√
Audio and video	Mono speaker, 2-W, 2-CC chamber	√	√
	One digital microphone		
	DTS Audio		
	5.0-MP, high-definition (HD), auto-focus, rear-facing webcam		

Category	Description	HP Pro Slate 10 EE G1	HP Pro Tablet 10 EE G1
Audio and video <i>(continued)</i>	2.0-MP, fixed-focus front-facing webcam	√	√
Sensor	Accelerometer eCompass	√	√
Wireless networking	Integrated WLAN + Bluetooth combination: 802.11 a\b\g\n 2×2 (Foxconn T77H462, Broadcom BCM43241) with two antennas; Bluetooth class 1 (10-meter range), Bluetooth 4.0+LE, included with WLAN module; support for Miracast	√	
	802.11 a\b\g\n 2×2 (Foxconn T77H462) with two antennas; Bluetooth class 1 (10-meter range), Bluetooth 4.0+LE, included with WLAN module; support for Miracast		√
	GPS for Android WLAN configurations only: GPS module and one antenna	√	
	Global WWAN module with GPS: 3G (HSPA+) M.2 module, data only, modem: Intel XMM6260, Huawei, MU736 2 WWAN antennas	√	√
NFC antenna	NFC antenna	√	
External expansion	Integrated micro SD Card Reader (available only on tablet models with WWAN capability)	√	√
Ports	<ul style="list-style-type: none"> • Audio: 3.5-mm headphone/microphone combo jack (supports North America-type headset only) • Micro HDMI port • Micro USB 2.0 AB type port • Power connector 	√	√
Power requirements	Supports a 2-cell, 28.49-WWhr, Li-ion battery (non-removable), USB charging battery Supports a 18-W (12-V/1.5-A) AC adapter with DC plug and localized cable plug support	√	√

Category	Description	HP Pro Slate 10 EE G1	HP Pro Tablet 10 EE G1
Operating system	Preinstalled: Android 4.4.4	√	
	Preinstalled:		√
	<ul style="list-style-type: none"> • Windows 8.1 Professional 32-bit • Windows 8.1 Professional 32-bit for Tablets • Windows 8.1 Professional 32-bit for Education • Windows 8.1 Professional 32-bit for Higher Education Emerging Markets • Windows 8.1 32-bit with Bing for Tablets Chinese (only available in the People's Republic of China) • Windows 8.1 32-bit with Bing for Tablets Emerging Markets • Windows 8.1 32-bit with Bing for Tablets Multilingual • Windows 8.1 32-bit with Bing and Office 365 for Tablets (AFO) Emerging Markets (OOC; only available in the People's Republic of China) • Windows 8.1 32-bit with Bing and Office 365 for Tablets (AFO) Multilingual (not available in Japan) • Windows 8.1 32-bit Small Screen Touch with Office Home and Student CPPP (OOC; only available in the People's Republic of China) • Windows 8.1 32-bit SST with Office 365 (AFO) Emerging Markets (OOC; only available in the People's Republic of China) • Windows 8.1 32-bit SST with Office 365 (AFO) ML (not available in Japan) • Windows 8.1 32-bit Small Screen Chinese (OOC; only available in the People's Republic of China) 		

Category	Description	HP Pro Slate 10 EE G1	HP Pro Tablet 10 EE G1
Operating system <i>(continued)</i>	<p>Preinstalled:</p> <ul style="list-style-type: none"> Windows 8.1 32-bit Small Screen (OOC) <p>OSDVD: Not supported – service only</p> <p>DRDVD: Not supported – service only</p> <p>Restore USB: Not supported – service only</p>		√
Serviceability	End user replaceable part: AC adapter and Stylus pen	√	√

2 External component identification



Item	Component	Item	Component
(1)	Power button	(10)	Micro SD Card Reader slot
(2)	Microphone	(11)	Micro SIM slot
(3)	Front-facing webcam	(12)	Micro HDMI jack
(4)	WLAN antenna	(13)	Micro USB 2.0 port
(5)	Rear-facing webcam	(14)	Power light
(6)	WWAN antenna	(15)	Power button
(7)	Volume up button	(16)	Speaker
(8)	Volume down button	(17)	Stylus pen and location
(9)	Audio-out (headphone)/Audio-in (microphone) jack		

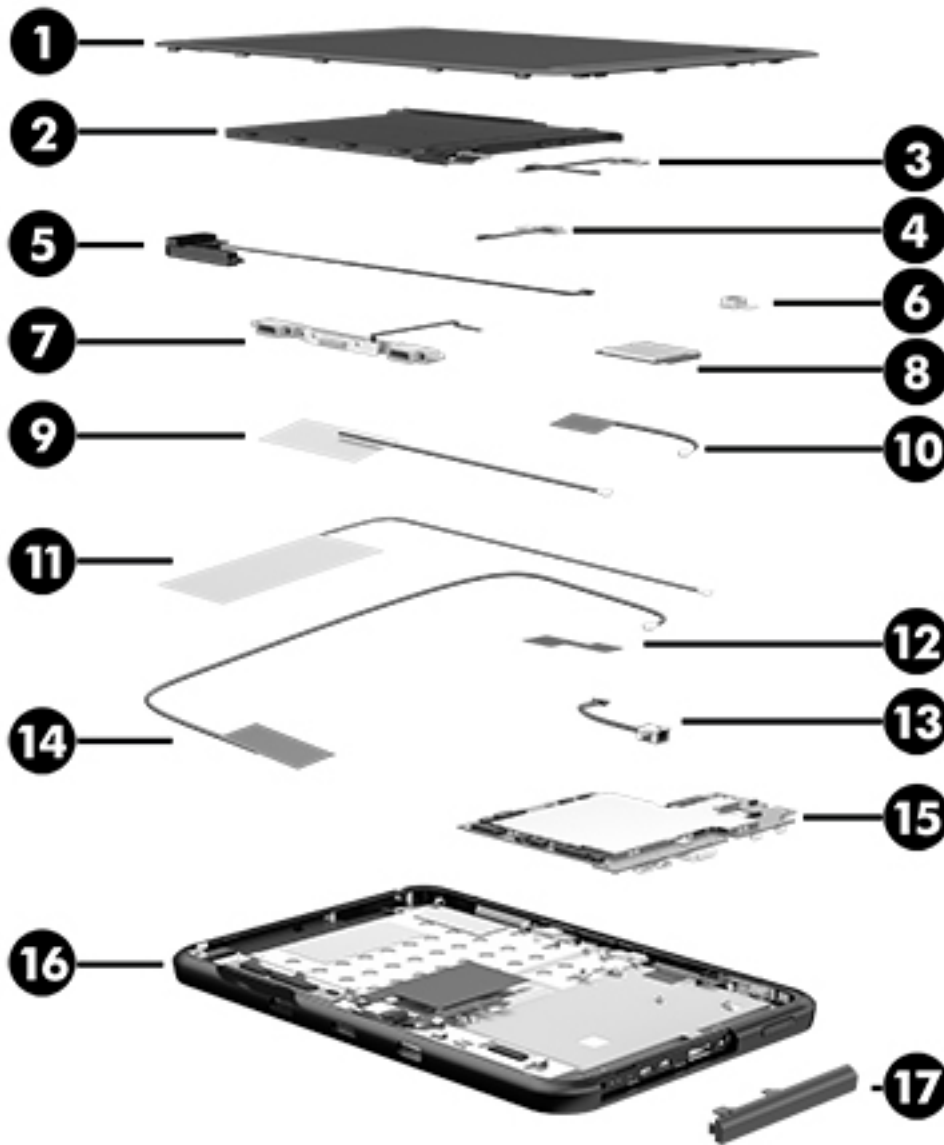
3 Illustrated parts catalog

Locating the serial number, product number, and model number

The tablet serial number and product number are located on the tablet back cover. This information may be needed when travelling internationally or when contacting support.



Tablet major components



Item	Component	Spare part number
(1)	Back cover (includes rear-facing webcam lens and shielding)	802824-001
(2)	Battery , 2-cell, 28.49-WHr, LI (includes cable, stylus pen holder, and double-sided adhesive)	802833-001
(3)	2.0-MP front-facing webcam (includes cable and indicator LED)	802826-001
(4)	Sensor board (does not include cable)	802828-001
	NOTE: The sensor board cable is included in the Cable Kit, spare part number 802835-001.	
	Antenna Kit (includes:)	
(5a)	WWAN auxiliary transceiver and cable	
(5b)	WWAN main transceiver and cable	

Item	Component	Spare part number
(6a)	WLAN auxiliary transceiver and cable	
(6b)	WLAN main transceiver and cable	
	For use only on HP Pro Slate 10 EE G1 tablet models	803379-001
	For use only on HP Pro Tablet 10 EE G1 tablet models	804221-001
(7)	WWAN module:	
	Huawei MU736 HSPA+M.2 with GPS for use only on HP Pro Slate 10 EE G1 tablet models	801160-005
	MU736 HS3110 Gen HSPA+m.2 with GPS for use only on HP Pro Tablet 10 EE G1 tablet models	748599-005
(8)	5.0-MP, HD rear-facing webcam with auto-focus (includes cable and double-sided adhesive)	802825-001
(9)	Speaker (includes speaker and cable)	802830-001
(10)	Transfer board (includes cable)	802848-001
(11)	Display panel cable – included in the Cable Kit, spare part number 802835-001.	
(12)	System board:	
	For use only on HP Pro Slate 10 EE G1 tablet models (all system boards equipped with the Android 4.4.4 operating system):	
	Equipped with an Intel Atom Z3735F 1.83-GHz processor (quad core), a graphics subsystem with UMA memory, 2.0-GB of system memory, 32-GB of system storage, NFC, and WWAN capability	802838-001
	Equipped with an Intel Atom Z3735F 1.83-GHz processor (quad core), a graphics subsystem with UMA memory, 2.0-GB of system memory, 32-GB of system storage, NFC, and GPS capability	802842-001
	Equipped with an Intel Atom Z3735F 1.83-GHz processor (quad core), a graphics subsystem with UMA memory, 2.0-GB of system memory, 16-GB of system storage, NFC, and WWAN capability	802837-001
	Equipped with an Intel Atom Z3735F 1.83-GHz processor (quad core), a graphics subsystem with UMA memory, 2.0-GB of system memory, 16-GB of system storage, NFC, and GPS capability	802841-001
	Equipped with an Intel Atom Z3735G 1.83-GHz processor (quad core), a graphics subsystem with UMA memory, 1.0-GB of system memory, 32-GB of system storage, and WWAN capability	802840-001
	Equipped with an Intel Atom Z3735G 1.83-GHz processor (quad core), a graphics subsystem with UMA memory, 1.0-GB of system memory, 32-GB of system storage, and GPS capability	803396-001
	Equipped with an Intel Atom Z3735G 1.83-GHz processor (quad core), a graphics subsystem with UMA memory, 1.0-GB of system memory, 16-GB of system storage, and WWAN capability	802839-001
	Equipped with an Intel Atom Z3735G 1.83-GHz processor (quad core), a graphics subsystem with UMA memory, 1.0-GB of system memory, 16-GB of system storage, and GPS capability	802843-001
	For use only on HP Pro Tablet 10 EE G1 tablet models:	
	Equipped with an Intel Atom Z3735F 1.83-GHz processor (quad core), a graphics subsystem with UMA memory, 2.0-GB of system memory, 64-GB of system storage, WWAN capability, and the Windows 8 Professional operating system	803373-601

Item	Component	Spare part number
	Equipped with an Intel Atom Z3735F 1.83-GHz processor (quad core), a graphics subsystem with UMA memory, 2.0-GB of system memory, 64-GB of system storage, WWAN capability, and the Windows 8 Standard operating system	803373-501
	Equipped with an Intel Atom Z3735F 1.83-GHz processor (quad core), a graphics subsystem with UMA memory, 2.0-GB of system memory, 64-GB of system storage, WWAN capability, and a non-Windows 8 operating system	803373-001
	Equipped with an Intel Atom Z3735F 1.83-GHz processor (quad core), a graphics subsystem with UMA memory, 2.0-GB of system memory, 64-GB of system storage, and the Windows 8 Professional operating system	803372-601
	Equipped with an Intel Atom Z3735F 1.83-GHz processor (quad core), a graphics subsystem with UMA memory, 2.0-GB of system memory, 64-GB of system storage, and the Windows 8 Standard operating system	803372-501
	Equipped with an Intel Atom Z3735F 1.83-GHz processor (quad core), a graphics subsystem with UMA memory, 2.0-GB of system memory, 64-GB of system storage, and a non-Windows 8 operating system	803372-001
	Equipped with an Intel Atom Z3735F 1.83-GHz processor (quad core), a graphics subsystem with UMA memory, 2.0-GB of system memory, 32-GB of system storage, WWAN capability, and the Windows 8 Professional operating system	803371-601
	Equipped with an Intel Atom Z3735F 1.83-GHz processor (quad core), a graphics subsystem with UMA memory, 2.0-GB of system memory, 32-GB of system storage, WWAN capability, and the Windows 8 Standard operating system	803371-501
	Equipped with an Intel Atom Z3735F 1.83-GHz processor (quad core), a graphics subsystem with UMA memory, 2.0-GB of system memory, 32-GB of system storage, WWAN capability, and a non-Windows 8 operating system	803371-001
	Equipped with an Intel Atom Z3735F 1.83-GHz processor (quad core), a graphics subsystem with UMA memory, 2.0-GB of system memory, 32-GB of system storage, and the Windows 8 Professional operating system	803370-601
	Equipped with an Intel Atom Z3735F 1.83-GHz processor (quad core), a graphics subsystem with UMA memory, 2.0-GB of system memory, 32-GB of system storage, and the Windows 8 Standard operating system	803370-501
	Equipped with an Intel Atom Z3735F 1.83-GHz processor (quad core), a graphics subsystem with UMA memory, 2.0-GB of system memory, 32-GB of system storage, and a non-Windows 8 operating system	803370-001
	Equipped with an Intel Atom Z3735G 1.83-GHz processor (quad core), a graphics subsystem with UMA memory, 1.0-GB of system memory, 64-GB of system storage, WWAN capability, and the Windows 8 Professional operating system	803377-601
	Equipped with an Intel Atom Z3735G 1.83-GHz processor (quad core), a graphics subsystem with UMA memory, 1.0-GB of system memory, 64-GB of system storage, WWAN capability, and the Windows 8 Standard operating system	803377-501
	Equipped with an Intel Atom Z3735G 1.83-GHz processor (quad core), a graphics subsystem with UMA memory, 1.0-GB of system memory, 64-GB of system storage, WWAN capability, and a non-Windows 8 operating system	803377-001
	Equipped with an Intel Atom Z3735G 1.83-GHz processor (quad core), a graphics subsystem with UMA memory, 1.0-GB of system memory, 64-GB of system storage, and the Windows 8 Professional operating system	803376-601
	Equipped with an Intel Atom Z3735G 1.83-GHz processor (quad core), a graphics subsystem with UMA memory, 1.0-GB of system memory, 64-GB of system storage, and the Windows 8 Standard operating system	803376-501

Item	Component	Spare part number
	Equipped with an Intel Atom Z3735G 1.83-GHz processor (quad core), a graphics subsystem with UMA memory, 1.0-GB of system memory, 64-GB of system storage, and a non-Windows 8 operating system	803376-001
	Equipped with an Intel Atom Z3735G 1.83-GHz processor (quad core), a graphics subsystem with UMA memory, 1.0-GB of system memory, 32-GB of system storage, WWAN capability, and the Windows 8 Professional operating system	803375-601
	Equipped with an Intel Atom Z3735G 1.83-GHz processor (quad core), a graphics subsystem with UMA memory, 1.0-GB of system memory, 32-GB of system storage, WWAN capability, and the Windows 8 Standard operating system	803375-501
	Equipped with an Intel Atom Z3735G 1.83-GHz processor (quad core), a graphics subsystem with UMA memory, 1.0-GB of system memory, 32-GB of system storage, WWAN capability, and a non-Windows 8 operating system	803375-001
	Equipped with an Intel Atom Z3735G 1.83-GHz processor (quad core), a graphics subsystem with UMA memory, 1.0-GB of system memory, 32-GB of system storage, and the Windows 8 Professional operating system	803374-601
	Equipped with an Intel Atom Z3735G 1.83-GHz processor (quad core), a graphics subsystem with UMA memory, 1.0-GB of system memory, 32-GB of system storage, and the Windows 8 Standard operating system	803374-501
	Equipped with an Intel Atom Z3735G 1.83-GHz processor (quad core), a graphics subsystem with UMA memory, 1.0-GB of system memory, 32-GB of system storage, and a non-Windows 8 operating system	803374-001
(13)	Power connector cable	802829-001
(14)	TouchScreen display panel assembly (includes TouchScreen board and cables and microphone)	
	10.1-in, LED, WUXGA, UWGA, AG display panel assembly for use only on HP Pro Slate 10 EE G1 tablet models equipped with WWAN capability	803619-001
	10.1-in, LED, WUXGA, UWGA, AG display panel assembly for use only on HP Pro Slate 10 EE G1 tablet models not equipped with WWAN capability	802849-001
	10.1-in, LED, WUXGA, UWGA, AG display panel assembly for use only on HP Pro Tablet 10 EE G1 tablet models equipped with WWAN capability	803618-001
	10.1-in, LED, WUXGA, UWGA, AG display panel assembly for use only on HP Pro Tablet 10 EE G1 tablet models not equipped with WWAN capability	802800-001
(15)	I/O cover	802821-001

Miscellaneous parts

Component	Spare part number
18-W (12.0-V/1.5-A) non-PFC AC adapter:	
For use only in Argentina	741855-001
For use only in Australia	741855-002
For use only in Brazil	741855-012
For use only in European countries and regions	741855-009
For use only in India	741855-005
For use only in North America	741855-008
For use only in the People's Republic of China	741855-006
For use only in South Korea	741855-014
For use only in the United Kingdom and Singapore	741855-003
Cable Kit , includes:	802835-001
<ul style="list-style-type: none"> • Display panel cables (2) • Microphone • Sensor board cable 	
GPS module (includes cable)	803378-001
HP Pro 10 EE G1 Keyboard Base:	
For use in Asia Pacific countries and regions	803030-371
For use in Brazil	803030-201
For use in English-speaking Canada	803030-DB1
For use in French-speaking Canada	803030-121
For use in Denmark, Finland, and Norway	803030-DH1
For use in Europe	803030-021
For use in France	803030-051
For use in Germany	803030-041
For use in India	803030-D61
For use in Japan	803030-291
For use in Latin America	803030-161
For use in the People's Republic of China	803030-AA1
For use in Saudi Arabia	803030-171
For use in South Korea	803030-AD1
For use in Switzerland	803030-BG1
For use in Taiwan	803030-AB1
For use in the United Kingdom and Singapore	803030-031

Component	Spare part number
For use in the United States	803030-001
NFC antenna	802832-001
NFC module (includes cable)	802831-001
Screw Kit:	
For use only on HP Pro Slate 10 EE G1 tablet models	802847-001
For use only on HP Pro Tablet 10 EE G1 tablet models	805304-001
Stylus pen	802822-001

4 Removal and replacement preliminary requirements


Tools required

You will need the following tools to complete the removal and replacement procedures:


- Magnetic screw driver
- Phillips P0 screw driver
- Plastic case utility tool

Service considerations


The following sections include some of the considerations that you must keep in mind during disassembly and assembly procedures.

 **NOTE:** As you remove each subassembly from the tablet, place the subassembly (and all accompanying screws) away from the work area to prevent damage.

Plastic parts

 **CAUTION:** Using excessive force during disassembly and reassembly can damage plastic parts. Use care when handling the plastic parts. Apply pressure only at the points designated in the maintenance instructions.

Cables and connectors

 **CAUTION:** When servicing the tablet, be sure that cables are placed in their proper locations during the reassembly process. Improper cable placement can damage the tablet.

Cables must be handled with extreme care to avoid damage. Apply only the tension required to unseat or seat the cables during removal and insertion. Handle cables by the connector whenever possible. In all cases, avoid bending, twisting, or tearing cables. Be sure that cables are routed in such a way that they cannot be caught or snagged by parts being removed or replaced. Handle flex cables with extreme care; these cables tear easily.

Grounding guidelines

Electrostatic discharge damage

Electronic components are sensitive to electrostatic discharge (ESD). Circuitry design and structure determine the degree of sensitivity. Networks built into many integrated circuits provide some protection, but in many cases, ESD contains enough power to alter device parameters or melt silicon junctions.

A discharge of static electricity from a finger or other conductor can destroy static-sensitive devices or microcircuitry. Even if the spark is neither felt nor heard, damage may have occurred.

An electronic device exposed to ESD may not be affected at all and can work perfectly throughout a normal cycle. Or the device may function normally for a while, then degrade in the internal layers, reducing its life expectancy.

⚠ CAUTION: To prevent damage to the tablet when you are removing or installing internal components, observe these precautions:

Keep components in their electrostatic-safe containers until you are ready to install them.

Before touching an electronic component, discharge static electricity by using the guidelines described in this section.

Avoid touching pins, leads, and circuitry. Handle electronic components as little as possible.

If you remove a component, place it in an electrostatic-safe container.

The following table shows how humidity affects the electrostatic voltage levels generated by different activities.

⚠ CAUTION: A product can be degraded by as little as 700 V.

Typical electrostatic voltage levels			
Event	Relative humidity		
	10%	40%	55%
Walking across carpet	35,000 V	15,000 V	7,500 V
Walking across vinyl floor	12,000 V	5,000 V	3,000 V
Motions of bench worker	6,000 V	800 V	400 V
Removing DIPS from plastic tube	2,000 V	700 V	400 V
Removing DIPS from vinyl tray	11,500 V	4,000 V	2,000 V
Removing DIPS from Styrofoam	14,500 V	5,000 V	3,500 V
Removing bubble pack from PCB	26,500 V	20,000 V	7,000 V
Packing PCBs in foam-lined box	21,000 V	11,000 V	5,000 V

Packaging and transporting guidelines

Follow these grounding guidelines when packaging and transporting equipment:

- To avoid hand contact, transport products in static-safe tubes, bags, or boxes.
- Protect ESD-sensitive parts and assemblies with conductive or approved containers or packaging.
- Keep ESD-sensitive parts in their containers until the parts arrive at static-free workstations.
- Place items on a grounded surface before removing items from their containers.
- Always be properly grounded when touching a component or assembly.
- Store reusable ESD-sensitive parts from assemblies in protective packaging or nonconductive foam.
- Use transporters and conveyors made of antistatic belts and roller bushings. Be sure that mechanized equipment used for moving materials is wired to ground and that proper materials are selected to avoid static charging. When grounding is not possible, use an ionizer to dissipate electric charges.

Workstation guidelines

Follow these grounding workstation guidelines:

- Cover the workstation with approved static-shielding material.
- Use a wrist strap connected to a properly grounded work surface and use properly grounded tools and equipment.
- Use conductive field service tools, such as cutters, screw drivers, and vacuums.
- When fixtures must directly contact dissipative surfaces, use fixtures made only of static-safe materials.
- Keep the work area free of nonconductive materials, such as ordinary plastic assembly aids and Styrofoam.
- Handle ESD-sensitive components, parts, and assemblies by the case or PCM laminate. Handle these items only at static-free workstations.
- Avoid contact with pins, leads, or circuitry.
- Turn off power and input signals before inserting or removing connectors or test equipment.

Equipment guidelines

Grounding equipment must include either a wrist strap or a foot strap at a grounded workstation.

- When seated, wear a wrist strap connected to a grounded system. Wrist straps are flexible straps with a minimum of one megohm $\pm 10\%$ resistance in the ground cords. To provide proper ground, wear a strap snugly against the skin at all times. On grounded mats with banana-plug connectors, use alligator clips to connect a wrist strap.
- When standing, use foot straps and a grounded floor mat. Foot straps (heel, toe, or boot straps) can be used at standing workstations and are compatible with most types of shoes or boots. On conductive floors or dissipative floor mats, use foot straps on both feet with a minimum of one megohm resistance between the operator and ground. To be effective, the conductive must be worn in contact with the skin.

The following grounding equipment is recommended to prevent electrostatic damage:


- Antistatic tape
- Antistatic smocks, aprons, and sleeve protectors
- Conductive bins and other assembly or soldering aids
- Nonconductive foam
- Conductive tabletop workstations with ground cords of one megohm resistance
- Static-dissipative tables or floor mats with hard ties to the ground
- Field service kits
- Static awareness labels
- Material-handling packages
- Nonconductive plastic bags, tubes, or boxes
- Metal tote boxes
- Electrostatic voltage levels and protective materials

The following table lists the shielding protection provided by antistatic bags and floor mats.

Material	Use	Voltage protection level
Antistatic plastics	Bags	1,500 V
Carbon-loaded plastic	Floor mats	7,500 V
Metallized laminate	Floor mats	5,000 V

5 Removal and replacement procedures

Tablet component replacement procedures

 **CAUTION:** Tablet components described in this chapter should only be accessed by an authorized service provider. Accessing these parts can damage the tablet and void the warranty.

This chapter provides removal and replacement procedures for authorized service provider only parts.

There are as many as 15 screws that must be removed, replaced, and/or loosened when servicing the tablet. Make special note of each screw size and location during removal and replacement.

HP Touchpoint Manager software (HP Pro Slate 10 EE G1 tablet models only)

HP Touchpoint Manager (HPTM) is a complete cloud-based solution for managing devices. Select HP Android Slate tablets include persistent anti-theft technology that allows HP Touchpoint Manager to alert an IT administrator that the device might be stolen.


If a supported device is reset to its factory state while the device is enrolled with an HP Touchpoint Manager account, then an IT administrator is alerted that the device may have been stolen.

The IT administrator can then use the Lost Device Protection feature to locate, lock, sound an alarm, or erase data from the device (see <http://www.hptouchpointmanager.com>). If the device is recovered, then the device owner can launch HP Touchpoint Manager and sign in with their user-name and password to authenticate the device and release it from anti-theft mode.

Unlocking the device and disabling Always On Remote Management (HP Pro Tablet 10 EE G1 tablet models only)

HP Touchpoint Manager (HPTM) is a complete cloud-based solution for managing devices. For select HP devices with the Windows operating system, the Always On Remote Management (AORM) feature is automatically activated when HP Touchpoint Manager software is installed.

AORM can perform a secure BIOS level lock and can also securely erase internal drives (except for encrypted self-encrypting drives). The HP Touchpoint Manager website (<http://www.hptouchpointmanager.com>) provides access to the AORM lock feature. The device must be unlocked using an authorized PIN from the same website before you can access HP Computer Setup and start the Windows operating system.

 **IMPORTANT:** A service agent cannot retrieve the PIN from the HP Touchpoint Manager website. If a locked device is returned for service, the agent must contact the customer to obtain the PIN to unlock the device. If a PIN is not available, the entire system board must be replaced.

Before returning the device for service, be sure to unlock the device using the PIN from the HP Touchpoint Manager website (<http://www.hptouchpointmanager.com>), and also disable the AORM feature in HP Computer Setup.

To disable AORM:

1. Access HP Computer Setup (F10).

- a. Turn on or restart the device, and then press **esc** while the “Press the ESC key for Startup Menu” message is displayed at the bottom of the screen.
- b. Press **f10** to enter Computer Setup.

 **NOTE:** If the BIOS is protected with an Administrator password, enter the password.

2. Select **Advanced**, and then select **HP Touchpoint Manager Options**.
3. Clear the **Allow Activation** check box.
4. Select **Save changes and exit**.


Back cover

Description	Spare part number
Back cover (includes rear-facing webcam lens and shielding)	802824-001
TouchScreen display panel assembly (includes TouchScreen board and cables and microphone)	
10.1-in, LED, WUXGA, UWGA, AG display panel assembly for use only on HP Pro Slate 10 EE G1 tablet models equipped with WWAN capability	803619-001
10.1-in, LED, WUXGA, UWGA, AG display panel assembly for use only on HP Pro Slate 10 EE G1 tablet models not equipped with WWAN capability	802849-001
10.1-in, LED, WUXGA, UWGA, AG display panel assembly for use only on HP Pro Tablet 10 EE G1 tablet models equipped with WWAN capability	803618-001
10.1-in, LED, WUXGA, UWGA, AG display panel assembly for use only on HP Pro Tablet 10 EE G1 tablet models not equipped with WWAN capability	802800-001

Before disassembling the tablet, follow these steps:

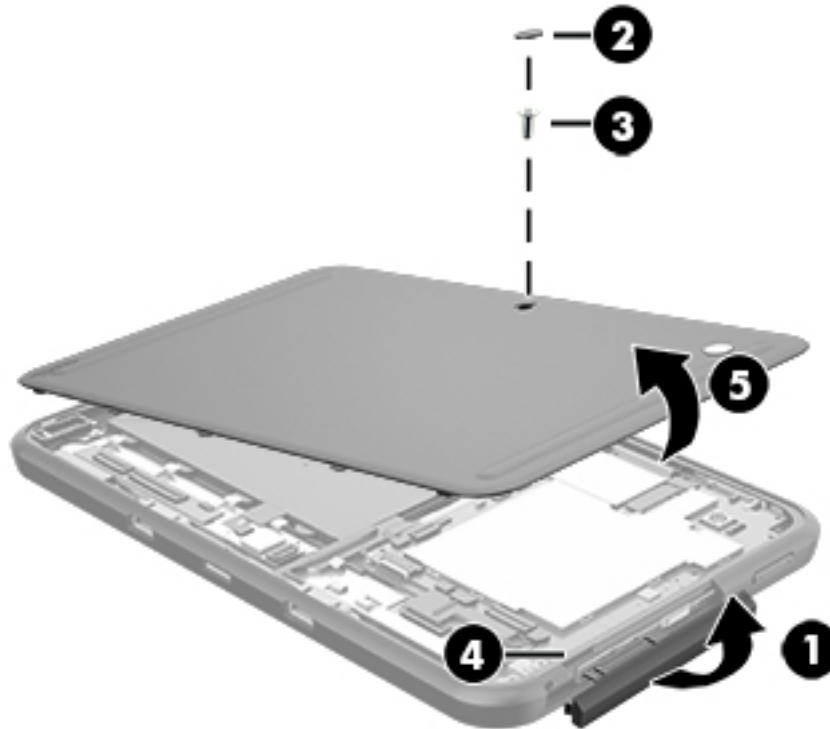
1. Turn off the tablet. If you are unsure whether the tablet is off or in Hibernation, turn the tablet on, and then shut it down through the operating system.
2. Disconnect the power from the tablet by unplugging the power cord from the tablet.
3. Disconnect all external devices from the tablet.

Remove the back cover:

 **CAUTION:** Before turning the display panel assembly upside down, make sure the work surface is clear of tools, screws, and any other foreign objects. Failure to follow this caution can result in damage to the display panel assembly.

1. Place the tablet on a flat surface, display panel side down, with the docking connector toward you.
2. Open the I/O cover **(1)**.
3. Remove the screw cover **(2)**.
4. Remove the Torx5 TM2.0×4.7 screw **(3)** that secures the back cover to the display panel assembly.

5. Use the notch (4) inside the I/O area to release the back cover (5).



Reverse this procedure to install the back cover.

Battery

Description	Spare part number
Battery, 2-cell, 28.49-WHr, LI (includes cable, stylus pen holder, and double-sided adhesive)	802833-001

Before removing the battery, follow these steps:

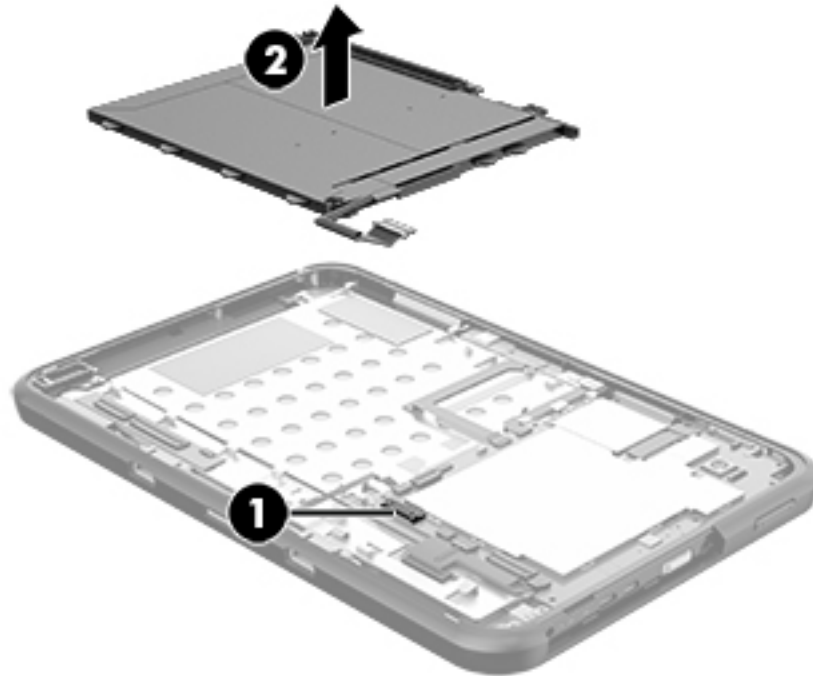
1. Turn off the tablet. If you are unsure whether the tablet is off or in Hibernation, turn the tablet on, and then shut it down through the operating system.
2. Disconnect the power from the tablet by unplugging the power cord from the tablet.
3. Disconnect all external devices from the tablet.
4. Remove the back cover (see [Back cover on page 18](#)).

WARNING! To reduce potential safety issues, use only the battery provided with the tablet, a replacement battery provided by HP, or a compatible battery purchased from HP.

CAUTION: Removing a battery that is the sole power source for the tablet can cause loss of information. To prevent loss of information, save your work or shut down the tablet through Windows before removing the battery.

Remove the battery:

1. Disconnect the battery cable (1) from the system board.
2. Detach the battery (2) from the display panel assembly. (The battery is attached to the display panel assembly with double-sided adhesive.)



3. Remove the battery.

Reverse this procedure to install the battery.

WWAN module

Description	Spare part number
Huawei MU736 HSPA+M.2 with GPS for use only on HP Pro Slate 10 EE G1 tablet models	801160-005
MU736 HS3110 Gen HSPA+m.2 with GPS for use only on HP Pro Tablet 10 EE G1 tablet models	748599-005

Before removing the WWAN module, follow these steps:

1. Turn off the tablet. If you are unsure whether the tablet is off or in Hibernation, turn the tablet on, and then shut it down through the operating system.
2. Disconnect the power from the tablet by unplugging the power cord from the tablet.
3. Disconnect all external devices from the tablet.
4. Remove the back cover (see [Back cover on page 18](#)).

⚠ WARNING! To reduce potential safety issues, use only the battery provided with the tablet, a replacement battery provided by HP, or a compatible battery purchased from HP.

⚠ CAUTION: Removing a battery that is the sole power source for the tablet can cause loss of information. To prevent loss of information, save your work or shut down the tablet through Windows before removing the battery.

Remove the WWAN module:

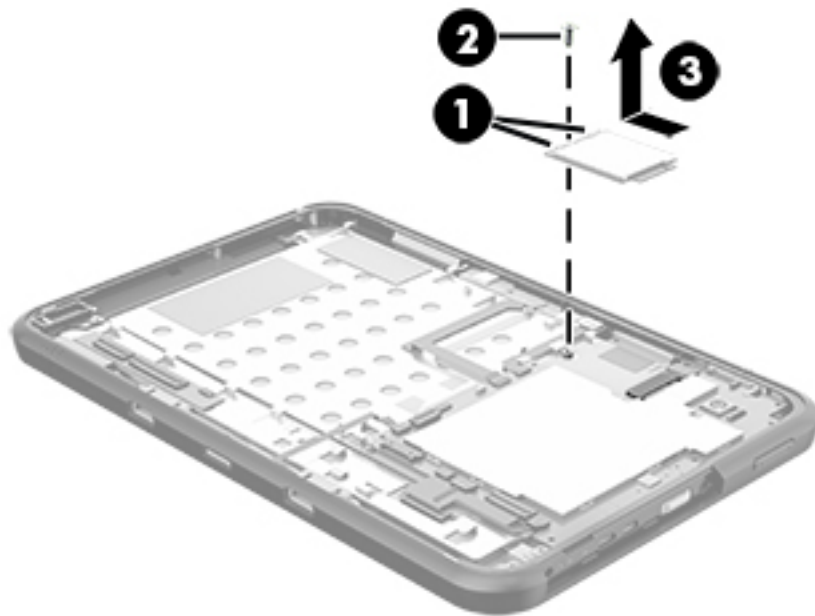
1. Disconnect the WWAN antenna cables **(1)** from the terminals on the WWAN module.

📝 NOTE: The #5/red WWAN antenna cable is connected to the WWAN module "Main" terminal. The #6/blue WWAN antenna cable is connected to the WWAN module "Aux" terminal.

2. Remove the Phillips PM2.0×4.1 screw **(2)** that secures the WWAN module to the system board. (The WWAN module tilts up.)

3. Remove the WWAN module **(3)** by pulling the module away from the slot at an angle.

📝 NOTE: WWAN modules are designed with a notch to prevent incorrect insertion.



4. Remove the WWAN module.

Reverse this procedure to install the WWAN module.

Rear-facing webcam

Description	Spare part number
5.0-MP, HD rear-facing webcam with auto-focus (includes cable)	802825-001

Before removing the rear-facing webcam, follow these steps:

1. Turn off the tablet. If you are unsure whether the tablet is off or in Hibernation, turn the tablet on, and then shut it down through the operating system.
2. Disconnect the power from the tablet by unplugging the power cord from the tablet.
3. Disconnect all external devices from the tablet.
4. Remove the back cover (see [Back cover on page 18](#)).
5. Disconnect the battery cable from the system board (see [Battery on page 19](#)).

Remove the rear-facing webcam:

1. Release the zero insertion force (ZIF) connector (**1**) to which the rear-facing webcam cable is attached, and then disconnect the rear-facing webcam cable from the system board.
2. Release the rear-facing webcam (**2**) from the molding built into the display panel assembly.



3. Remove the rear-facing webcam and cable.

Reverse this procedure to install the rear-facing webcam.

Wireless antenna

Description	Spare part number
Antenna Kit, includes WWAN antenna auxiliary and main cables and transceivers and WLAN antenna auxiliary and main cables and transceivers	
For use only on HP Pro Slate 10 EE G1 tablet models	803379-001
For use only on HP Pro Tablet 10 EE G1 tablet models	804221-001

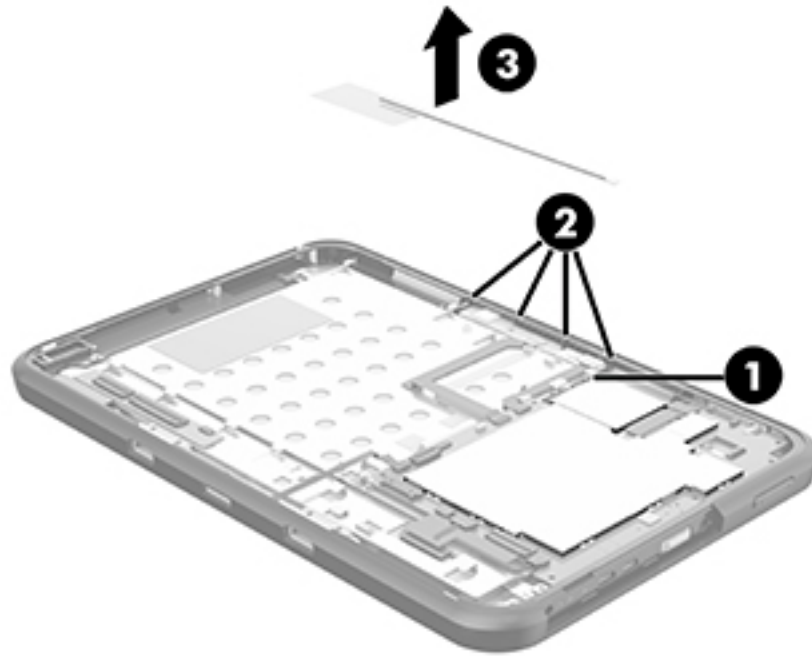
Before removing the wireless antenna, follow these steps:

1. Turn off the tablet. If you are unsure whether the tablet is off or in Hibernation, turn the tablet on, and then shut it down through the operating system.
2. Disconnect the power from the tablet by unplugging the power cord from the tablet.
3. Disconnect all external devices from the tablet.
4. Remove the back cover (see [Back cover on page 18](#)).
5. Disconnect the battery cable from the system board (see [Battery on page 19](#)).

Remove the wireless antenna:

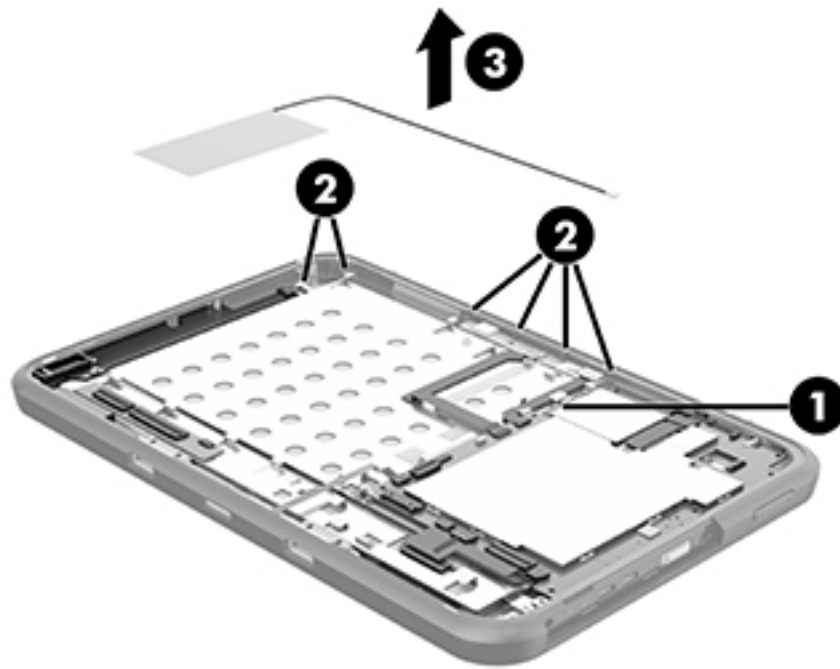
1. Disconnect the WWAN auxiliary antenna cable **(1)** from the WWAN module auxiliary terminal.
2. Release the WWAN auxiliary antenna cable from the retention clips **(2)** built into the display panel assembly.

3. Detach the WWAN auxiliary antenna transceiver **(3)** from the display panel assembly. (The WWAN auxiliary antenna transceiver is attached to the display panel assembly with double-sided adhesive.)



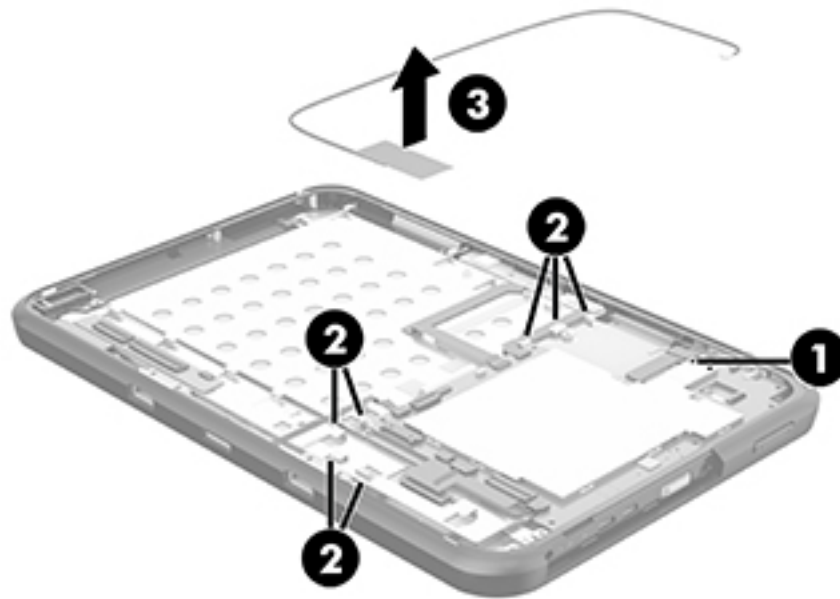
4. Remove the WWAN auxiliary antenna cable and transceiver.
5. Disconnect the WWAN main antenna cable **(1)** from the WWAN module main terminal.
6. Release the WWAN main antenna cable from the retention clips **(2)** built into the display panel assembly.

7. Detach the WWAN main antenna transceiver **(3)** from the display panel assembly. (The WWAN main antenna transceiver is attached to the display panel assembly with double-sided adhesive.)



8. Remove the WWAN main antenna cable and transceiver.
9. Disconnect the WLAN main antenna cable **(1)** from the WLAN module main terminal.
10. Release the WLAN main antenna cable from the retention clips **(2)** built into the display panel assembly.

11. Detach the WLAN main antenna transceiver **(3)** from the display panel assembly. (The WLAN main antenna transceiver is attached to the display panel assembly with double-sided adhesive.)



12. Remove the WLAN main antenna cable and transceiver.
13. Disconnect the WLAN auxiliary antenna cable **(1)** from the WLAN module auxiliary terminal.

14. Detach the WLAN auxiliary antenna transceiver (2) from the display panel assembly. (The WLAN auxiliary antenna transceiver is attached to the display panel assembly with double-sided adhesive.)



15. Remove the WLAN auxiliary antenna cable and transceiver.
Reverse this procedure to install the wireless antennas.

Sensor board

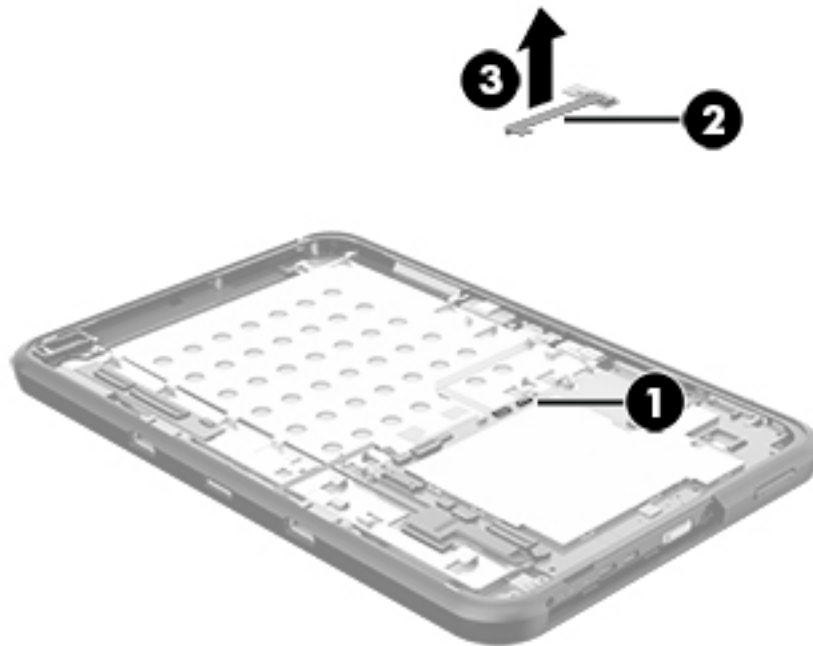
Description	Spare part number
Sensor board (includes cable and double-sided adhesive)	802828-001

Before removing the sensor board, follow these steps:

1. Turn off the tablet. If you are unsure whether the tablet is off or in Hibernation, turn the tablet on, and then shut it down through the operating system.
2. Disconnect the power from the tablet by unplugging the power cord from the tablet.
3. Disconnect all external devices from the tablet.
4. Remove the back cover (see [Back cover on page 18](#)).
5. Disconnect the battery cable from the system board (see [Battery on page 19](#)).

Remove the sensor board:


1. Release the ZIF connector **(1)** to which the sensor board cable is attached, and then disconnect the sensor board cable from the system board.
2. Detach the sensor board cable **(2)** from the display panel assembly. (The sensor board cable is attached to the display panel assembly with double-sided adhesive.)
3. Detach the sensor board **(3)** from the display panel assembly. (The sensor board is attached to the display panel assembly with double-sided adhesive.)



4. Remove the sensor board and cable.

Reverse this procedure to install the sensor board.

Display panel cable

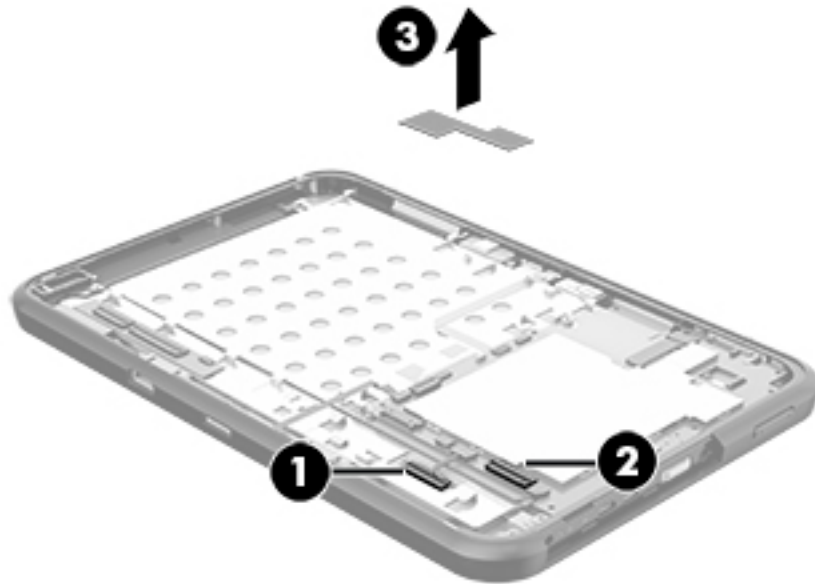
 **NOTE:** The display panel cable is included in the Cable Kit, spare part number 802835-001.

Before removing the display panel cable, follow these steps:

1. Turn off the tablet. If you are unsure whether the tablet is off or in Hibernation, turn the tablet on, and then shut it down through the operating system.
2. Disconnect the power from the tablet by unplugging the power cord from the tablet.
3. Disconnect all external devices from the tablet.
4. Remove the back cover (see [Back cover on page 18](#)).
5. Disconnect the battery cable from the system board (see [Battery on page 19](#)).

Remove the display panel cable:

1. Release the ZIF connector **(1)** to which the display panel cable is attached, and then disconnect the display panel cable from the display panel assembly.
2. Release the ZIF connector **(2)** to which the display panel cable is attached, and then disconnect the display panel cable from the system board.
3. Remove the display panel cable **(3)**.



Reverse this procedure to install the display panel cable.

Power connector cable

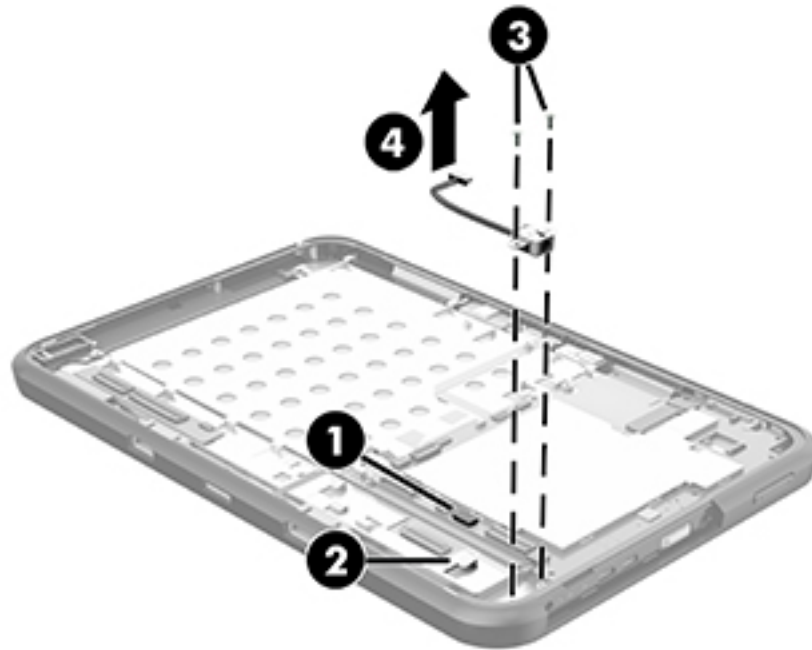
Description	Spare part number
Power connector cable	802829-001

Before removing the power connector cable, follow these steps:

1. Turn off the tablet. If you are unsure whether the tablet is off or in Hibernation, turn the tablet on, and then shut it down through the operating system.
2. Disconnect the power from the tablet by unplugging the power cord from the tablet.
3. Disconnect all external devices from the tablet.
4. Remove the back cover (see [Back cover on page 18](#)).
5. Disconnect the battery cable from the system board (see [Battery on page 19](#)).

Remove the power connector cable:

1. Disconnect the power connector cable (1) from the system board.
2. Release the power connector cable from the retention clip (2) built into the display panel assembly.
3. Remove the two Phillips PM2.0×4.1 screws (3) that secure the power connector to the display panel assembly.
4. Remove the power connector cable (4).



Reverse this procedure to install the power connector cable.

Front-facing webcam

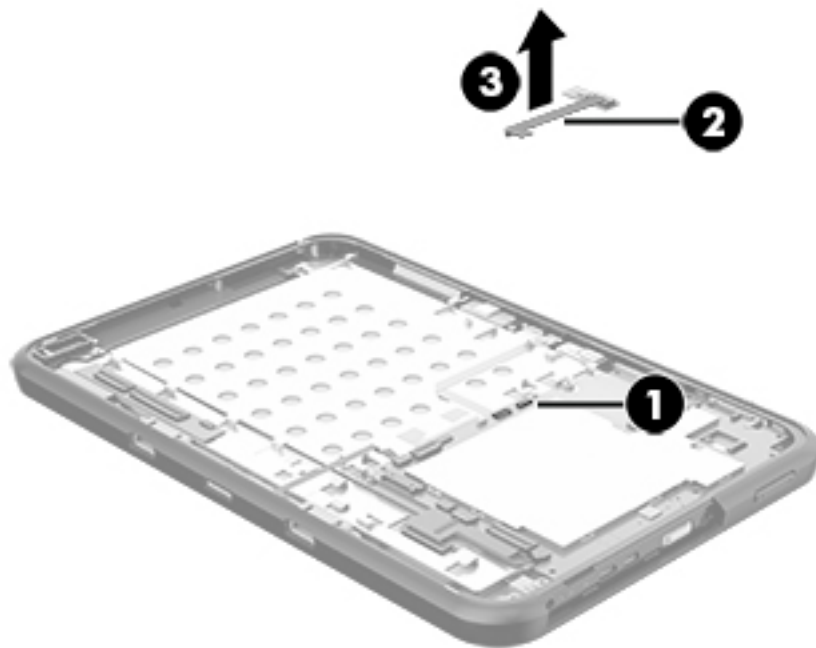
Description	Spare part number
Front-facing webcam (includes cable)	802826-001

Before removing the front-facing webcam, follow these steps:

1. Turn off the tablet. If you are unsure whether the tablet is off or in Hibernation, turn the tablet on, and then shut it down through the operating system.
2. Disconnect the power from the tablet by unplugging the power cord from the tablet.
3. Disconnect all external devices from the tablet.
4. Remove the back cover (see [Back cover on page 18](#)).
5. Disconnect the battery cable from the system board (see [Battery on page 19](#)).

Remove the front-facing webcam:

1. Release the ZIF connector **(1)** to which the front-facing webcam cable is attached, and then disconnect the front-facing webcam cable from the system board.
2. Remove the Phillips PM2.0×4.1 screw **(2)** that secures the front-facing webcam to the display panel assembly.
3. Remove the front-facing webcam **(3)**.



Reverse this procedure to install the front-facing webcam.

Transfer board

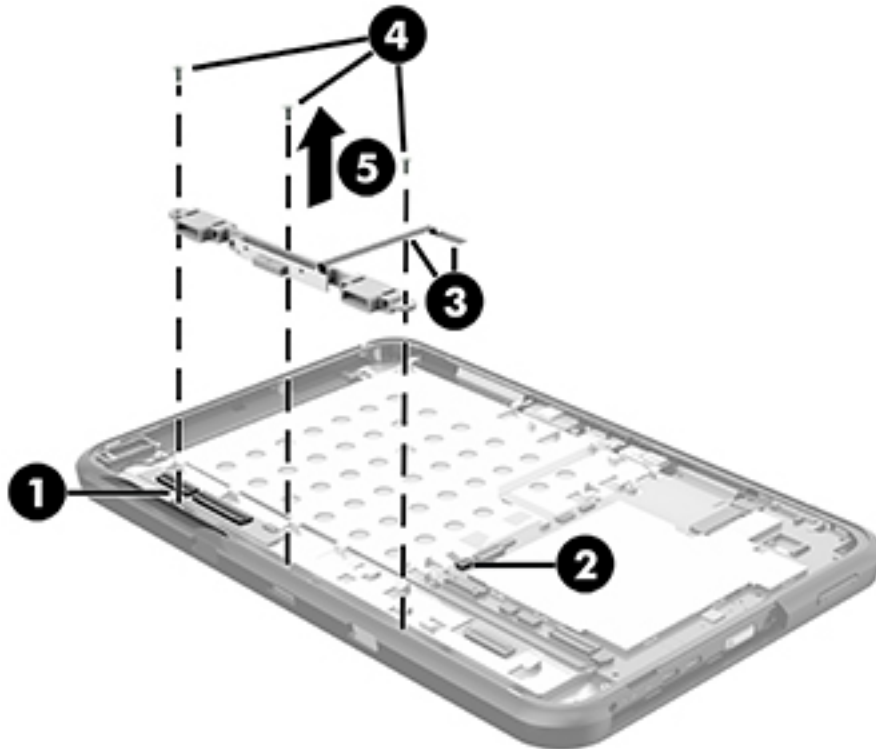
Description	Spare part number
Transfer (includes cable and double-sided adhesive)	802848-001

Before removing the transfer board, follow these steps:

1. Turn off the tablet. If you are unsure whether the tablet is off or in Hibernation, turn the tablet on, and then shut it down through the operating system.
2. Disconnect the power from the tablet by unplugging the power cord from the tablet.
3. Disconnect all external devices from the tablet.
4. Remove the back cover (see [Back cover on page 18](#)).
5. Disconnect the battery cable from the system board (see [Battery on page 19](#)).

Remove the transfer board:

1. Detach the TouchScreen board **(1)** from the display panel assembly. (The TouchScreen board is attached to the display panel assembly with double-sided adhesive.)
2. Release the ZIF connector **(2)** to which the transfer board cable is attached, and then disconnect the transfer board cable from the system board.
3. Detach the transfer board cable **(3)** from the display panel assembly. (The transfer board cable is attached to the display panel assembly with double-sided adhesive.)
4. Remove the three Phillips PM2.0×4.1 screws **(4)** that secure the transfer board to the display panel assembly.
5. Remove the transfer board **(5)**.



6. Remove the transfer board and cable.
Reverse this procedure to install the transfer board.

Speaker

Description	Spare part number
Speaker (includes cable)	802830-001

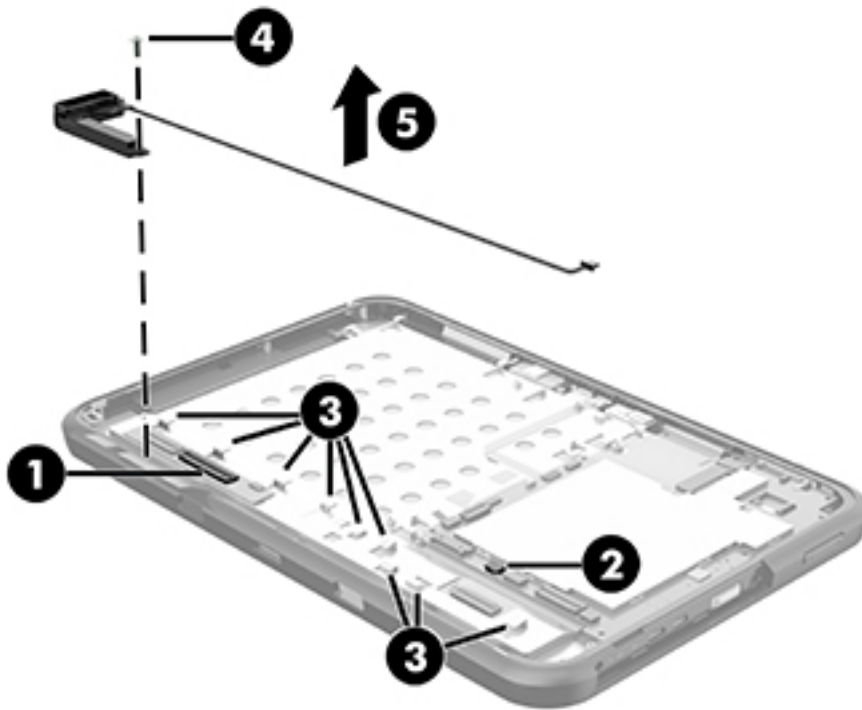
Before removing the speaker, follow these steps:

1. Turn off the tablet. If you are unsure whether the tablet is off or in Hibernation, turn the tablet on, and then shut it down through the operating system.
2. Disconnect the power from the tablet by unplugging the power cord from the tablet.
3. Disconnect all external devices from the tablet.
4. Remove the back cover (see [Back cover on page 18](#)).
5. Disconnect the battery cable from the system board (see [Battery on page 19](#)).

Remove the speaker:

1. Detach the TouchScreen board **(1)** from the display panel assembly. (The TouchScreen board is attached to the display panel assembly with double-sided adhesive.)
2. Disconnect the speaker cable **(2)** from the system board.
3. Release the speaker cable **(3)** from the retention clips built into the display panel assembly.
4. Remove the Phillips PM2.0×4.1 screw **(4)** that secures the speaker to the display panel assembly.

5. Remove the speaker (5).



6. Remove the speaker and cable.

Reverse this procedure to install the speaker.

System board

Description	Spare part number
For use only on HP Pro Slate 10 EE G1 tablet models (all system boards equipped with the Android 4.4.4 operating system):	
Equipped with an Intel Atom Z3735F 1.83-GHz processor (quad core), a graphics subsystem with UMA memory, 2.0-GB of system memory, 32-GB of system storage, NFC, and WWAN capability	802838-001
Equipped with an Intel Atom Z3735F 1.83-GHz processor (quad core), a graphics subsystem with UMA memory, 2.0-GB of system memory, 32-GB of system storage, NFC, and GPS capability	802842-001
Equipped with an Intel Atom Z3735F 1.83-GHz processor (quad core), a graphics subsystem with UMA memory, 2.0-GB of system memory, 16-GB of system storage, NFC, and WWAN capability	802837-001
Equipped with an Intel Atom Z3735F 1.83-GHz processor (quad core), a graphics subsystem with UMA memory, 2.0-GB of system memory, 16-GB of system storage, NFC, and GPS capability	802841-001
Equipped with an Intel Atom Z3735G 1.83-GHz processor (quad core), a graphics subsystem with UMA memory, 1.0-GB of system memory, 32-GB of system storage, and WWAN capability	802840-001
Equipped with an Intel Atom Z3735G 1.83-GHz processor (quad core), a graphics subsystem with UMA memory, 1.0-GB of system memory, 32-GB of system storage, and GPS capability	803396-001
Equipped with an Intel Atom Z3735G 1.83-GHz processor (quad core), a graphics subsystem with UMA memory, 1.0-GB of system memory, 16-GB of system storage, and WWAN capability	802839-001
Equipped with an Intel Atom Z3735G 1.83-GHz processor (quad core), a graphics subsystem with UMA memory, 1.0-GB of system memory, and 16-GB of system storage, and GPS capability	802843-001
For use only on HP Pro Tablet 10 EE G1 tablet models:	
Equipped with an Intel Atom Z3735F 1.83-GHz processor (quad core), a graphics subsystem with UMA memory, 2.0-GB of system memory, 64-GB of system storage, WWAN capability, and the Windows 8 Professional operating system	803373-601
Equipped with an Intel Atom Z3735F 1.83-GHz processor (quad core), a graphics subsystem with UMA memory, 2.0-GB of system memory, 64-GB of system storage, WWAN capability, and the Windows 8 Standard operating system	803373-501
Equipped with an Intel Atom Z3735F 1.83-GHz processor (quad core), a graphics subsystem with UMA memory, 2.0-GB of system memory, 64-GB of system storage, WWAN capability, and a non-Windows 8 operating system	803373-001
Equipped with an Intel Atom Z3735F 1.83-GHz processor (quad core), a graphics subsystem with UMA memory, 2.0-GB of system memory, 64-GB of system storage, and the Windows 8 Professional operating system	803372-601
Equipped with an Intel Atom Z3735F 1.83-GHz processor (quad core), a graphics subsystem with UMA memory, 2.0-GB of system memory, 64-GB of system storage, and the Windows 8 Standard operating system	803372-501
Equipped with an Intel Atom Z3735F 1.83-GHz processor (quad core), a graphics subsystem with UMA memory, 2.0-GB of system memory, 64-GB of system storage, and a non-Windows 8 operating system	803372-001
Equipped with an Intel Atom Z3735F 1.83-GHz processor (quad core), a graphics subsystem with UMA memory, 2.0-GB of system memory, 32-GB of system storage, WWAN capability, and the Windows 8 Professional operating system	803371-601
Equipped with an Intel Atom Z3735F 1.83-GHz processor (quad core), a graphics subsystem with UMA memory, 2.0-GB of system memory, 32-GB of system storage, WWAN capability, and the Windows 8 Standard operating system	803371-501
Equipped with an Intel Atom Z3735F 1.83-GHz processor (quad core), a graphics subsystem with UMA memory, 2.0-GB of system memory, 32-GB of system storage, WWAN capability, and a non-Windows 8 operating system	803371-001

Description	Spare part number
Equipped with an Intel Atom Z3735F 1.83-GHz processor (quad core), a graphics subsystem with UMA memory, 2.0-GB of system memory, 32-GB of system storage, and the Windows 8 Professional operating system	803370-601
Equipped with an Intel Atom Z3735F 1.83-GHz processor (quad core), a graphics subsystem with UMA memory, 2.0-GB of system memory, 32-GB of system storage, and the Windows 8 Standard operating system	803370-501
Equipped with an Intel Atom Z3735F 1.83-GHz processor (quad core), a graphics subsystem with UMA memory, 2.0-GB of system memory, 32-GB of system storage, and a non-Windows 8 operating system	803370-001
Equipped with an Intel Atom Z3735G 1.83-GHz processor (quad core), a graphics subsystem with UMA memory, 1.0-GB of system memory, 64-GB of system storage, WWAN capability, and the Windows 8 Professional operating system	803377-601
Equipped with an Intel Atom Z3735G 1.83-GHz processor (quad core), a graphics subsystem with UMA memory, 1.0-GB of system memory, 64-GB of system storage, WWAN capability, and the Windows 8 Standard operating system	803377-501
Equipped with an Intel Atom Z3735G 1.83-GHz processor (quad core), a graphics subsystem with UMA memory, 1.0-GB of system memory, 64-GB of system storage, WWAN capability, and a non-Windows 8 operating system	803377-001
Equipped with an Intel Atom Z3735G 1.83-GHz processor (quad core), a graphics subsystem with UMA memory, 1.0-GB of system memory, 64-GB of system storage, and the Windows 8 Professional operating system	803376-601
Equipped with an Intel Atom Z3735G 1.83-GHz processor (quad core), a graphics subsystem with UMA memory, 1.0-GB of system memory, 64-GB of system storage, and the Windows 8 Standard operating system	803376-501
Equipped with an Intel Atom Z3735G 1.83-GHz processor (quad core), a graphics subsystem with UMA memory, 1.0-GB of system memory, 64-GB of system storage, and a non-Windows 8 operating system	803376-001
Equipped with an Intel Atom Z3735G 1.83-GHz processor (quad core), a graphics subsystem with UMA memory, 1.0-GB of system memory, 32-GB of system storage, WWAN capability, and the Windows 8 Professional operating system	803375-601
Equipped with an Intel Atom Z3735G 1.83-GHz processor (quad core), a graphics subsystem with UMA memory, 1.0-GB of system memory, 32-GB of system storage, WWAN capability, and the Windows 8 Standard operating system	803375-501
Equipped with an Intel Atom Z3735G 1.83-GHz processor (quad core), a graphics subsystem with UMA memory, 1.0-GB of system memory, 32-GB of system storage, WWAN capability, and a non-Windows 8 operating system	803375-001
Equipped with an Intel Atom Z3735G 1.83-GHz processor (quad core), a graphics subsystem with UMA memory, 1.0-GB of system memory, 32-GB of system storage, and the Windows 8 Professional operating system	803374-601
Equipped with an Intel Atom Z3735G 1.83-GHz processor (quad core), a graphics subsystem with UMA memory, 1.0-GB of system memory, 32-GB of system storage, and the Windows 8 Standard operating system	803374-501
Equipped with an Intel Atom Z3735G 1.83-GHz processor (quad core), a graphics subsystem with UMA memory, 1.0-GB of system memory, 32-GB of system storage, and a non-Windows 8 operating system	803374-001

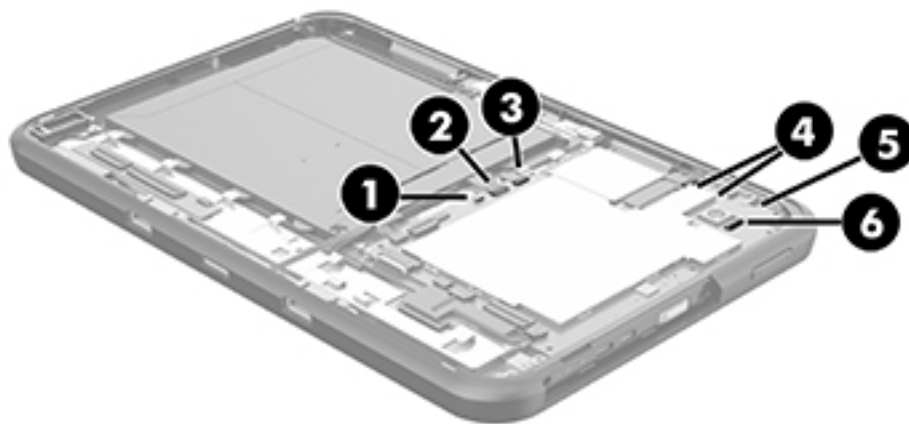
Before removing the system board, follow these steps:

1. Turn off the tablet. If you are unsure whether the tablet is off or in Hibernation, turn the tablet on, and then shut it down through the operating system.
2. Disconnect the power from the tablet by unplugging the power cord from the tablet.

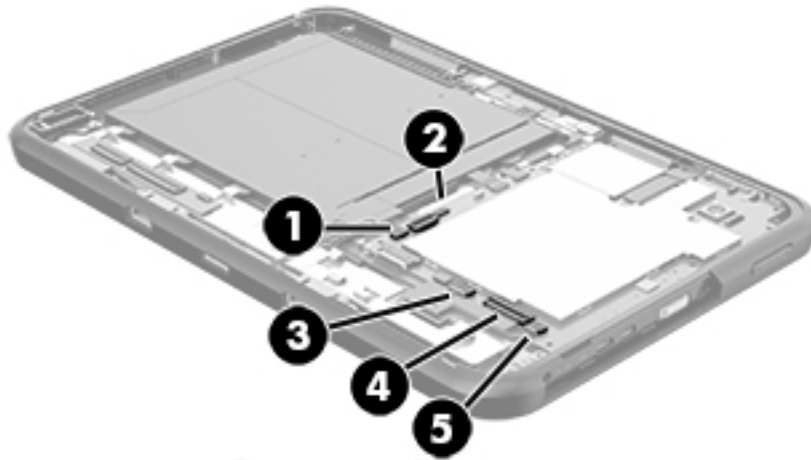
3. Disconnect all external devices from the tablet.
4. Remove the back cover (see [Back cover on page 18](#)).
5. Disconnect the battery cable from the system board (see [Battery on page 19](#)).

Remove the system board:

1. Disconnect the following cables from the system board:
 - (1) GPS antenna cable
 - (2) Front-facing webcam cable (see [Front-facing webcam on page 30](#))
 - (3) Sensor board cable (see [Sensor board on page 27](#))
 - (4) WLAN antenna cables
 - (5) Microphone cable
 - (6) Rear-facing webcam cable (see [Rear-facing webcam on page 22](#))

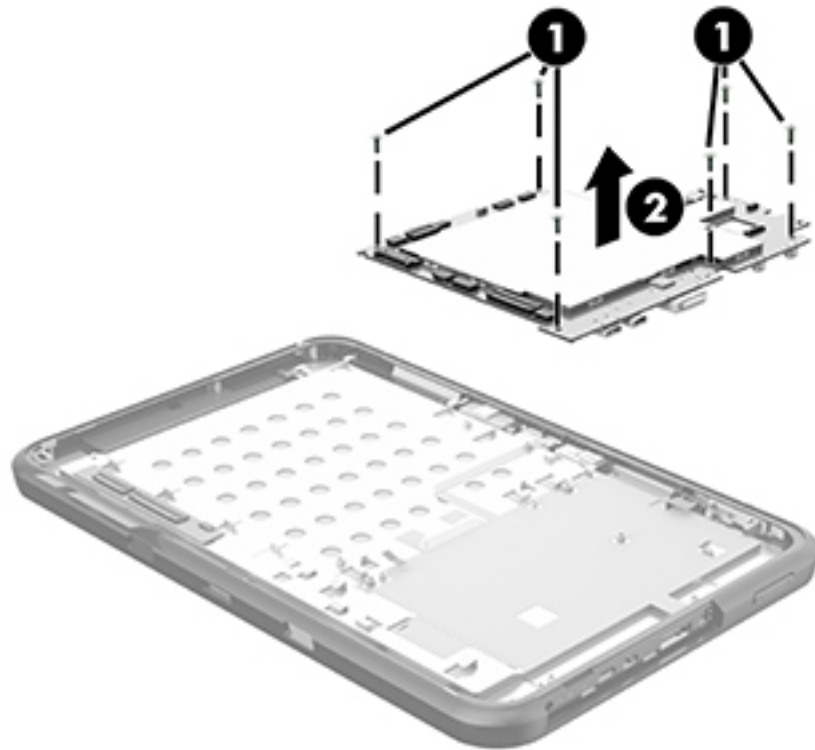


2. Disconnect the following cables from the system board:
 - (1) Transfer board cable (see [Transfer board on page 31](#))
 - (2) TouchScreen board cable
 - (3) Power connector cable (see [Power connector cable on page 29](#))
 - (4) Display panel cable (see [Display panel cable on page 28](#))
 - (5) Speaker cable (see [Speaker on page 33](#))



3. Remove the six Phillips PM2.0×4.1 screws (1) that secure the system board to the display panel assembly.

4. Remove the system board (2).



Reverse this procedure to install the system board.

I/O cover

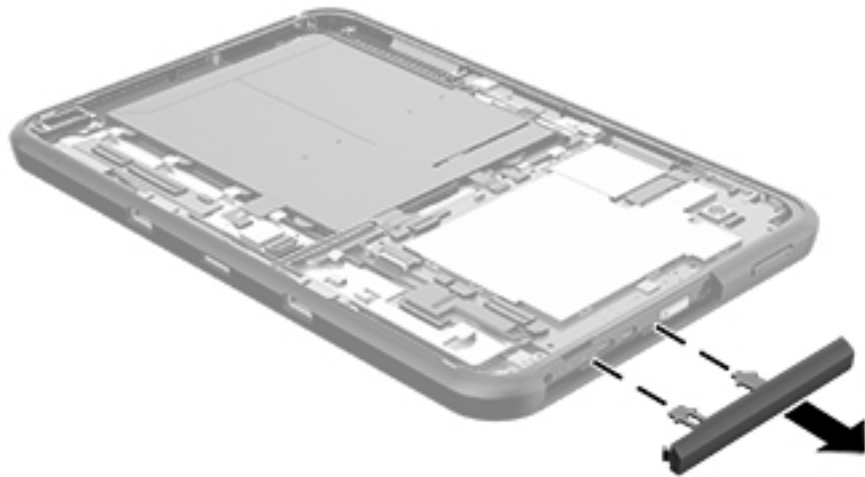
Description	Spare part number
I/O cover	802821-001

Before removing the I/O cover, follow these steps:

1. Turn off the tablet. If you are unsure whether the tablet is off or in Hibernation, turn the tablet on, and then shut it down through the operating system.
2. Disconnect the power from the tablet by unplugging the power cord from the tablet.
3. Disconnect all external devices from the tablet.
4. Remove the back cover (see [Back cover on page 18](#)).
5. Disconnect the battery cable from the system board (see [Battery on page 19](#)).
6. Remove the system board (see [System board on page 35](#)).

Remove the I/O cover:

1. Release the I/O cover retention tabs from the openings in the display panel assembly.



2. Remove the I/O cover.

Reverse this procedure to install the I/O cover.

6 Using HP PC Hardware Diagnostics (UEFI)

HP PC Hardware Diagnostics is a Unified Extensible Firmware Interface (UEFI) that allows you to run diagnostic tests to determine whether the tablet hardware is functioning properly. The tool runs outside the operating system so that it can isolate hardware failures from issues that are caused by the operating system or other software components.

To start HP PC Hardware Diagnostics (UEFI):


1. Turn off the tablet.
2. Press and hold the **Power** and **Volume down** buttons at the same time until the tablet turns on and “Esc...pause at startup” is displayed at the bottom of the screen.

The Startup menu is displayed.

3. Select **System Diagnostics**.
4. When the diagnostic tool opens, select the type of diagnostic test you want to run, and then follow the on-screen instructions.

 **NOTE:** If you need to stop a diagnostic test, press *esc*.

Downloading HP PC Hardware Diagnostics (UEFI) to a USB device

 **NOTE:** Instructions for downloading HP PC Hardware Diagnostics (UEFI) are provided in English only.

There are two options to download HP PC Hardware Diagnostics to a USB device:

Option 1: HP PC Diagnostics home page— Provides access to the latest UEFI version

1. Go to <http://hp.com/go/techcenter/pcdiags>.
2. Tap the UEFI **Download** link, and then select **Run**.

Option 2: Support and Drivers pages—Provide downloads for a specific product for earlier and later versions

1. Go to <http://www.hp.com>.
2. Tap **Support**, located at the top of the page, and then tap **Download Drivers**.
3. In the text box, enter the product name, and then tap **Go**.

– or –

Tap **Find Now** to let HP automatically detect your product.

4. In the **Diagnostic** section, tap **HP UEFI Support Environment**.

– or –


Tap **Download**, and then select **Run**.


7 Specifications

	Metric	U.S.
Dimensions (landscape orientation)		
Width	28.0 cm	11.02 in
Height	18.2 cm	7.17 in
Thickness	1.4 cm	0.57 in
Weight (lowest weight configuration)	0.90 g	1.98 lb
Input power		
The tablet operates on DC power, which can be supplied by an AC or a DC power source. The AC power source must be rated at 100—240 V, 50/60 Hz, 0.3-1.0 A.		
NOTE: The HP 12V dc @ 1.5A - 18W adapter included with your tablet is recommended for charging the tablet.		
Temperature		
Operating	5°C to 35°C	41°F to 95°F
Nonoperating	-20°C to 60°C	-4°F to 140°F
Relative humidity (non-condensing)		
Operating	10% to 90%	
Nonoperating	5% to 95%	
Maximum altitude (unpressurized)		
Operating	-15 m to 3,048 m	-50 ft to 10,000 ft
Nonoperating	-15 m to 12,192 m	-50 ft to 40,000 ft
NOTE: Applicable product safety standards specify thermal limits for plastic surfaces. The device operates well within this range of temperatures.		


8 Backup and recovery

To protect your information, use Windows backup and restore utilities to back up individual files and folders, back up your entire hard drive, , or create system restore points. In case of system failure, you can use the backup files to restore the contents of your tablet.

1. Tap , and then tap the search box.
2. In the search box, type `restore`, and then select from the list of displayed options.

 **NOTE:** For detailed instructions on various backup and restore options, perform a search for these topics in Windows Help and Support.

In case of system instability, HP recommends that you print the recovery procedures and save them for later use.

 **NOTE:** Windows includes the User Account Control feature to improve the security of your tablet. You may be prompted for your permission or password for tasks such as installing software, running utilities, or changing Windows settings. For more information, see Windows Help and Support.

Backing up your information


Recovery after a system failure is as good as your most recent backup. You should create system repair media and your initial backup immediately after initial system setup. As you add new software and data files, you should continue to back up your system on a regular basis to maintain a reasonably current backup.

For more information on the Windows backup features, see Windows Help and Support.

Performing a system recovery


In case of system failure or instability, the tablet provides the following tools to recover your files:

- Windows recovery tools: You can use Windows Backup and Restore to recover information you have previously backed up. You can also use Windows Automatic Repair to fix problems that might prevent Windows from starting correctly.

 **NOTE:** If you are unable to boot (start up) your tablet, contact support.

Changing the boot device order

To change the boot order so that you can boot from an external device:

 **NOTE:** An external flash drive is required to perform this procedure.

1. If possible, back up all personal files.
2. Shut down the tablet.
3. Connect the external flash drive.
4. Turn off the tablet.
5. Press and hold the **Power** and **Volume down** buttons at the same time until the tablet turns on and “Esc...pause at startup” is displayed at the bottom of the screen.

The Startup menu is displayed.

6. Tap **F9 Boot Options**.
7. Select the external flash drive as the boot device.
8. Restart the tablet.

Using Windows Refresh or Windows Reset

When your tablet is not working properly and you need to regain system stability, the Windows Refresh option allows you to start fresh and keep what is important to you.

The Windows Reset option allows you to perform detailed reformatting of your tablet, or remove personal information before you give away or recycle your tablet. For more information on these features, see Windows Help and Support.

9 Statement of memory volatility

The purpose of this chapter is to provide general information regarding nonvolatile memory in HP Business Notebook PCs. This chapter also provides general instructions for restoring nonvolatile memory that can contain personal data after the system has been powered off and the hard drive has been removed.

HP Business Notebook PC products that use Intel®-based or AMD®-based system boards contain volatile DDR memory. The amount of nonvolatile memory present in the system depends upon the system configuration. Intel-based and AMD-based system boards contain nonvolatile memory subcomponents as originally shipped from HP, assuming that no subsequent modifications have been made to the system and assuming that no applications, features, or functionality have been added to or installed on the system.

Following system shutdown and removal of all power sources from an HP Business Notebook PC system, personal data can remain on volatile system memory (DIMMs) for a finite period of time and will also remain in nonvolatile memory. Use the steps below to remove personal data from the notebook PC, including the nonvolatile memory found in Intel-based and AMD-based system boards.



NOTE: If your tablet has a keyboard base, connect to the keyboard base before beginning steps in this chapter.


1. Follow steps (a) through (j) below to restore the nonvolatile memory that can contain personal data. Restoring or reprogramming nonvolatile memory that does not store personal data is neither necessary nor recommended.
 - a. Turn on or restart the computer, and then press **esc** while the “Press the ESC key for Startup Menu” message is displayed at the bottom of the screen.





NOTE: If the system has a BIOS administrator password, enter the password at the prompt.

- b. Select **Main**, select **Restore Defaults**, and then select **Yes** to load defaults.
- c. Select the **Security** menu, select **Restore Security Level Defaults**, and then select **Yes** to restore security level defaults.
- d. If an asset or ownership tag is set, select the **Security** menu and scroll down to the **Utilities** menu. Select **System IDs**, and then select **Asset Tracking Number**. Clear the tag, and then make the selection to return to the prior menu.
- e. If a DriveLock password is set, select the **Security** menu, and scroll down to **Hard Drive Tools** under the **Utilities** menu. Select **Hard Drive Tools**, select **DriveLock**, then uncheck the checkbox for **DriveLock password on restart**. Select **OK** to proceed.
- f. If an Automatic DriveLock password is set, select the **Security** menu, scroll down to **Hard Drive Tools** under the **Utilities** menu. Select **Hard Drive Tools**, scroll down to **Automatic DriveLock**, then select the desired hard drive and disable protection. At the automatic drive lock warning screen, select **Yes** to continue. Repeat this procedure if more than one hard drive has an Automatic DriveLock password.
- g. Select the **Main** menu, and then select **Reset BIOS Security to factory default**. Click **Yes** at the warning message.
- h. Select the **Main** menu, select **Save Changes and Exit**, select **Yes** to save changes and exit, and then select **Shutdown**.

- i. Reboot the system. If the system has a Trusted Platform Module (TPM) and/or fingerprint reader, one or two prompts will appear—one to clear the TPM and the other to Reset Fingerprint Sensor; press or tap **F1** to accept or **F2** to reject.
 - j. Remove all power and system batteries for at least 24 hours.
2. Complete one of the following:
- Remove and retain the storage drive.
– or –
 - Clear the drive contents by using a third party utility designed to erase data from an SSD.
– or –
 - Clear the contents of the drive by using the following BIOS Setup Secure Erase command option steps:

 **IMPORTANT:** If you clear data using Secure Erase, it cannot be recovered.

- a. Turn on or restart the computer, and then press **esc** while the “Press the ESC key for Startup Menu” message is displayed at the bottom of the screen.
 - b. Select the **Security** menu and scroll down to the Utilities menu.
 - c. Select **Hard Drive Tools**.
 - d. Under **Utilities**, select **Secure Erase**, select the hard drive storing the data you want to clear, and then follow the on-screen instructions to continue.
- or –
- Clear the contents of the drive by using the following Disk Sanitizer command steps:

 **IMPORTANT:** If you clear data using Disk Sanitizer, it cannot be recovered.
 **NOTE:** The amount of time it takes for Disk Sanitizer to run can take several hours. Plug the computer into an AC outlet before starting.

- a. Turn on or restart the computer, and then press **esc** while the “Press the ESC key for Startup Menu” message is displayed at the bottom of the screen.
 - b. Select the **Security** menu and scroll down to the **Utilities** menu.
 - c. Select **Hard Drive Tools**.
 - d. Under **Utilities**, select **Disk Sanitizer**, select the hard drive holding the data you want to clear, and then follow the on-screen instructions to continue.

Nonvolatile memory usage

Non Volatile Memory Type	Amount (Size)	Does this memory store customer data?	Does this memory retain data when power is removed?	What is the purpose of this memory?	How is data input into this memory?	How is this memory write protected?
HP Sure Start flash (select models only)	2 MBytes	No	Yes	Provides protected backup of critical System BIOS code, EC firmware, and critical PC configuration data for select platforms that support HP Sure Start.	Data cannot be written to this device via the host processor. The content is managed solely by the HP Sure Start Embedded Controller.	This memory is protected by the HP Sure Start Embedded Controller.
Real Time Clock (RTC) battery backed-up CMOS configuration memory (CMOS)	256 bytes	No	Yes	Stores system date and time and noncritical data.	RTC battery backed-up CMOS is programmed using the Computer Setup (BIOS), or changing the Microsoft Windows date & time.	This memory is not write-protected.
Controller (NIC) EEPROM	64 KBytes (not customer accessible)	No	Yes	Store NIC configuration and NIC firmware.	NIC EEPROM is programmed using a utility from the NIC vendor that can be run from DOS.	A utility is required to write data to this memory and is available from NIC vendor. Writing data to this ROM in an inappropriate manner will render the NIC non-functional.
DIMM Serial Presence Detect (SPD) configuration data	256 bytes per memory module, 128 bytes programmable (not customer accessible)	No	Yes	Stores memory module information.	DIMM SPD is programmed by the memory vendor.	Data cannot be written to this memory when the module is installed in a PC. The specific write-protection method varies by memory vendor.
System BIOS	4 to 5 MBytes	Yes	Yes	Store system BIOS code and PC configuration data.	System BIOS code is programmed at the factory. Code is updated when the system BIOS is updated. Configuration data and settings are input using the Computer Setup (BIOS) or a custom utility.	A utility is required for writing data to this memory and is available on the HP website; go to http://www.hp.com/support , and select your country. Select Drivers & Downloads , and then follow the on-screen instructions. NOTE: Writing data to this ROM in an inappropriate manner can render the PC non-functional.
Intel Management Engine Firmware (present in only)	1.5 MBytes or 5 MBytes	Yes	Yes	Stores Management Engine Code,	Management Engine Code is programmed at the factory. Code is updated via Intel	The Intel chipset is configured to enforce hardware protection to

Non Volatile Memory Type	Amount (Size)	Does this memory store customer data?	Does this memory retain data when power is removed?	What is the purpose of this memory?	How is data input into this memory?	How is this memory write protected?
specific ZBook and EliteBook models. For more information, go to http://www.hp.com/support , and select your country. Select Drivers & Downloads , and then follow the on-screen instructions.)				Settings, Provisioning Data and iAMT third-party data store.	secure firmware update utility. Unique Provisioning Data can be entered at the factory or by an administrator using the Management Engine (MEBx) setup utility. The third party data store contents can be populated by a remote management console or local applications that have been registered by an administrator to have access to the space.	block all direct read/write access to this area. An Intel utility is required for updating the firmware. Only firmware updates digitally signed by Intel can be applied using this utility.
Bluetooth flash	2Mbit	No	Yes	Stores Bluetooth configuration and firmware.	Bluetooth flash is programmed at the factory. Tools for writing data to this memory are not publicly available but can be obtained from the silicon vendor.	A utility is required for writing data to this memory and is made available through newer versions of the driver whenever the flash requires an upgrade.
802.11 WLAN EEPROM	4 Kbit to 8 Kbit	No	Yes	Stores configuration and calibration data.	802.11 WLAN EEPROM is programmed at the factory. Tools for writing data to this memory are not made public.	A utility is required for writing data to this memory and is typically not made available to the public unless a firmware upgrade is necessary to address a unique issue.
Webcam	64K bit	No	Yes	Store webcam configuration and firmware.	Webcam memory is programmed using a utility from the device manufacturer that can be run from Windows.	A utility is required for writing data to this memory and is typically not made available to the public unless a firmware upgrade is necessary to address a unique issue.
Fingerprint Reader	512 KByte flash	Yes	Yes	Stores fingerprint templates.	Fingerprint reader memory is programmed by user enrollment in HP ProtectTools Security Manager.	Only a digitally signed application can make the call to write to the flash.

Questions and answers

1. How can the BIOS settings be restored (returned to factory settings)?



IMPORTANT: Restore defaults does not securely erase any data on your hard drive. See question and answer 6 for steps to securely erase data.

Restore defaults does not reset the Customer Secure Boot key. See question and answer 7 for information about resetting the key.

- a. Turn on or restart the computer, and then press **esc** while the “Press the ESC key for Startup Menu” message is displayed at the bottom of the screen.

- b. Select **Main**, and then select **Restore defaults**.

The Unified Extensible Firmware Interface (UEFI) BIOS an industry-standard software interface between the platform firmware and an operating system (OS). It is a replacement for the older BIOS architecture, but supports much of the legacy BIOS functionality.

Like the legacy BIOS, the UEFI BIOS provides an interface display the system information, configuration settings, and change the configuration of your computer before an OS is loaded. BIOS is provides a secure run-time environment that supports a Graphic User Interface (GUI). In this environment, you can use either a pointing device (Touchscreen, TouchPad, pointing stick, or USB mouse) or the keyboard to navigate and make menu and configuration selections. The UEFI BIOS also contains basic system diagnostics.

The UEFI BIOS provides functionality beyond that of the legacy BIOS. In addition the UEFI BIOS works to initialize the computer’s hardware before loading and executing the OS, the run-time environment allows the loading and execution of software programs from storage devices to provide more functionality, such as advanced hardware diagnostics (with the ability to display more detailed system information) and advanced firmware management and recovery software.

- c. Follow the on-screen instructions.

The UEFI BIOS resides on a flash memory chip. A utility is required to write to the chip.

- d. Select **Main**, select **Save Changes and Exit**, and then follow the on-screen instructions.

2. What is a UEFI BIOS, and how is it different from a legacy BIOS?

3. Where does the UEFI BIOS reside?

4. What kind of configuration data is stored on the DIMM Serial Presence Detect (SPD) memory module? How would this data be written?

The DIMM SPD memory contains information about the memory module, such as size, serial number, data width, speed/timing, voltage, and thermal information. This information is written by the module manufacturer and stored on an EEPROM. This EEPROM cannot be written to when the memory module is installed in a PC. Third-party tools do exist that can write to the EEPROM when the memory module is not installed in a PC. Various third-party tools are available to read SPD memory.

5. What is meant by “Restore the nonvolatile memory found in Intel-based system boards”?

This message relates to clearing the Real Time Clock (RTC) CMOS memory that contains PC configuration data.

6. How can the BIOS security be reset to factory defaults and data erased?



IMPORTANT: Resetting will result in the loss of information. These steps will not reset a Customer Secure Boot Key.

See question and answer 7 for information about resetting the key.

- a. Turn on or restart the computer, and then press **esc** while the “Press the ESC key for Startup Menu” message is displayed at the bottom of the screen.
 - b. Select **Main**, and then select **Reset BIOS Security to Factory Default**.
 - c. Follow the on-screen instructions.
 - d. Select **Main**, select **Save Changes and Exit**, and then follow the on-screen instructions.
- 7. How can the Customer Secure Boot Key be reset?**

Secure Boot is a feature to ensure that only authenticated code can start on a platform. If you enabled Secure Boot and created a Customer Secure Boot Key, simply disabling Secure Boot will not clear the keys. You must also select to clear the Secure Boot Keys. Use the same procedure you used to create the Secure Boot Keys, but make the selection to clear or delete all Secure Boot Keys.

Using HP Sure Start (select models only)

Select computer models are configured with HP Sure Start, a technology that continuously monitors your computer's BIOS for attacks or corruption. If the BIOS becomes corrupted or is attacked, HP Sure Start restores the BIOS to its previously safe state, without user intervention. Those select computer models ship with HP Sure Start configured and enabled. HP Sure Start is configured and already enabled so that most users can use the HP Sure Start default configuration. The default configuration can be customized by advanced users.

To access the latest documentation on HP Sure Start, go to <http://www.hp.com/support>, and select your country. Select **Drivers & Downloads**, and then follow the on-screen instructions.

10 Power cord set requirements

The wide-range input feature of the tablet permits it to operate from any line voltage from 100 to 120 volts AC, or from 220 to 240 volts AC.

The 3-conductor power cord set included with the tablet meets the requirements for use in the country or region where the equipment is purchased.

Power cord sets for use in other countries and regions must meet the requirements of the country or region where the tablet is used.

Requirements for all countries

The following requirements are applicable to all countries and regions:

- The length of the power cord set must be at least 1.0 m (3.3 ft) and no more than 2.0 m (6.5 ft).
- All power cord sets must be approved by an acceptable accredited agency responsible for evaluation in the country or region where the power cord set will be used.
- The power cord sets must have a minimum current capacity of 10 amps and a nominal voltage rating of 125 or 250 V AC, as required by the power system of each country or region.
- The appliance coupler must meet the mechanical configuration of an EN 60 320/IEC 320 Standard Sheet C13 connector for mating with the appliance inlet on the back of the tablet.

Requirements for specific countries and regions

Country/region	Accredited agency	Applicable note number
Australia	EANSW	1
Austria	OVE	1
Belgium	CEBC	1
Canada	CSA	2
Denmark	DEMKO	1
Finland	FIMKO	1
France	UTE	1
Germany	VDE	1
Italy	IMQ	1
Japan	METI	3
The Netherlands	KEMA	1
Norway	NEMKO	1
The People's Republic of China	COC	5
South Korea	EK	4

Country/region	Accredited agency	Applicable note number
Sweden	CEMKO	1
Switzerland	SEV	1
Taiwan	BSMI	4
The United Kingdom	BSI	1
The United States	UL	2

1. The flexible cord must be Type H05VV-F, 3-conductor, 1.0-mm² conductor size. Power cord set fittings (appliance coupler and wall plug) must bear the certification mark of the agency responsible for evaluation in the country or region where it will be used.
2. The flexible cord must be Type SPT-3 or equivalent, No. 18 AWG, 3-conductor. The wall plug must be a two-pole grounding type with a NEMA 5-15P (15 A, 125 V) or NEMA 6-15P (15 A, 250 V) configuration.
3. The appliance coupler, flexible cord, and wall plug must bear a “T” mark and registration number in accordance with the Japanese Dentori Law. The flexible cord must be Type VCT or VCTF, 3-conductor, 1.00-mm² conductor size. The wall plug must be a two-pole grounding type with a Japanese Industrial Standard C8303 (7 A, 125 V) configuration.
4. The flexible cord must be Type RVV, 3-conductor, 0.75-mm² conductor size. Power cord set fittings (appliance coupler and wall plug) must bear the certification mark of the agency responsible for evaluation in the country or region where it will be used.
5. The flexible cord must be Type VCTF, 3-conductor, 0.75-mm² conductor size. Power cord set fittings (appliance coupler and wall plug) must bear the certification mark of the agency responsible for evaluation in the country or region where it will be used.

11 Recycling

When a non-rechargeable or rechargeable battery has reached the end of its useful life, do not dispose of the battery in general household waste. Follow the local laws and regulations in your area for battery disposal.

HP encourages customers to recycle used electronic hardware, HP original print cartridges, and rechargeable batteries. For more information about recycling programs, see the HP Web site at <http://www.hp.com/recycle>.

Index

- A**
 - AC adapter, spare part numbers 11
 - antenna
 - location 5
 - removal 23
 - spare part numbers 7, 23
 - Antenna Kit, spare part numbers 7, 23
 - audio, product description 1, 2
 - audio-in jack 5
 - audio-out jack 5
- B**
 - back cover
 - removal 18
 - spare part number 7, 18
 - battery
 - removal 19
 - spare part number 7, 19
 - buttons
 - power 5
 - volume down 5
 - volume up 5
- C**
 - Cable Kit, spare part number 11
 - cables, service considerations 13
 - Card Reader slot 5
 - connectors, service considerations 13
- D**
 - display panel assembly, spare part numbers 10, 18
 - display panel cable
 - removal 28
 - spare part number 8, 28
 - display panel, product description 1
- E**
 - electrostatic discharge 14
 - equipment guidelines 16
 - external expansion, product description 2
- F**
 - front-facing webcam
 - location 5
 - removal 30
 - spare part number 7, 30
- G**
 - GPS module, spare part number 11
 - graphics, product description 1
 - grounding guidelines 14
 - guidelines
 - equipment 16
 - grounding 14
 - packaging 15
 - transporting 15
 - workstation 15
- H**
 - HDMI jack 5
 - headphone jack 5
 - HP PC Hardware Diagnostics (UEFI), downloading 41
 - HP Pro 10 EE G1 Keyboard Base, spare part numbers 11
- I**
 - I/O cover
 - removal 39
 - spare part number 10, 39
- J**
 - jacks
 - audio-in 5
 - audio-out 5
 - headphone 5
 - microphone 5
- M**
 - mass storage device, product description 1
 - memory module, product description 1
 - microphone
 - location 5
 - product description 1, 2
- N**
 - microphone jack 5
 - model name 1
- N**
 - NFC antenna, product description 2
 - NFC antenna, spare part number 12
 - NFC module, spare part number 12
- O**
 - operating system, product description 3, 4
- P**
 - packaging guidelines 15
 - plastic parts, service considerations 13
 - ports
 - product description 2
 - USB 2.0 5
 - power button 5
 - power connector cable
 - removal 29
 - spare part number 10, 29
 - power cord, set requirements 51
 - power light 5
 - power requirements, product description 2
 - processor, product description 1
 - product description
 - audio 1, 2
 - display panel 1
 - external expansion 2
 - graphics 1
 - mass storage 1
 - memory module 1
 - microphone 1, 2
 - NFC antenna 2
 - operating system 3, 4
 - ports 2
 - power requirements 2
 - processors 1
 - product name 1
 - sensor 2
 - serviceability 4
 - stylus 1

- video 1, 2
- wireless networking 2
- product name 1

R

- rear-facing webcam
 - location 5
 - removal 22
 - spare part number 8, 22
- Recovery 44
- Refresh 44

S

- Screw Kit, spare part numbers 12
- sensor board
 - removal 27
 - spare part number 7, 27
- sensor, product description 2
- service considerations
 - cables 13
 - connectors 13
 - plastic parts 13
- serviceability, product description 4
- SIM slot 5
- speaker
 - location 5
 - removal 33
 - spare part number 8, 33
- stylus pen
 - location 5
 - product description 1
 - spare part number 12
- system board
 - removal 35
 - spare part numbers 8, 35

T

- tablet
 - major components 7
 - specifications 42
- tools required 13
- transfer board
 - removal 31
 - spare part number 8, 31
- transporting guidelines 15

U

- USB 2.0 port 5

V

- video, product description 1, 2

- volume down button 5
- volume up button 5

W

- webcam
 - removal 22, 30
 - spare part numbers 7, 8, 22, 30
- Windows Recovery 44
- Windows Refresh 44
- wireless antenna
 - location 5
 - removal 23
 - spare part numbers 7, 23
- wireless networking, product description 2
- WLAN antenna
 - location 5
 - removal 23
 - spare part numbers 23
- workstation guidelines 15
- WWAN antenna
 - location 5
 - removal 23
 - spare part numbers 23
- WWAN module
 - removal 20
 - spare part numbers 8, 20