



LaserJet Pro MFP M128fp

1



M128fp

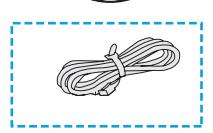
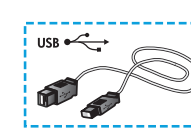
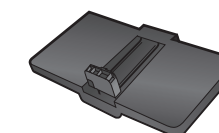
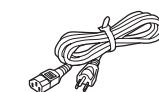
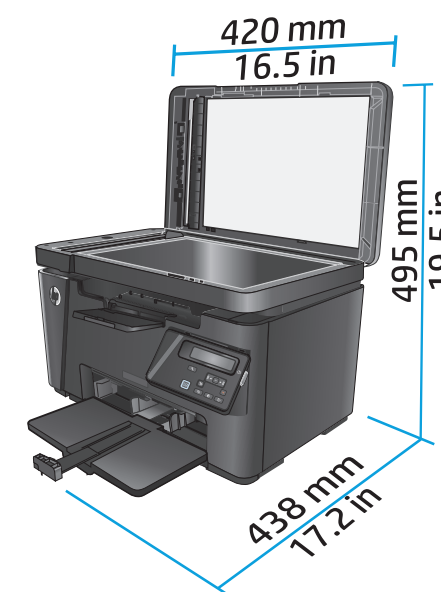
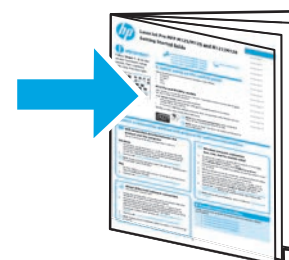
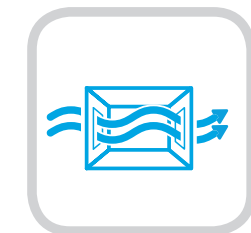
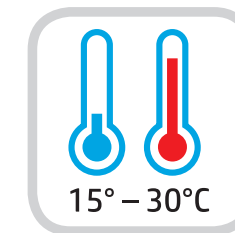


www.hp.com/support/ljMFPM128series

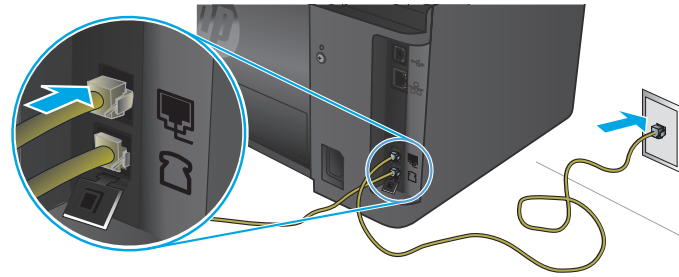


CZ181-90015

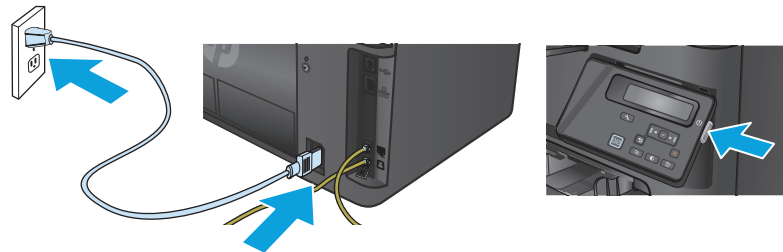
© Copyright 2015 HP Development Company, L.P.



3.6



3.7



CN

1. **连接传真电话线。** 可能需要 RJ11 电话线的国家/地区特定适配器，才能连接到电话插孔。
可选： 要连接电话分机，请将另一根电话线连接到底部电话端口。
2. **用电源线连接本产品与接地的交流电源插座，然后打开产品电源。** 确保电源符合产品的额定电压要求。额定电压标注在产品标签上。本产品使用 100-127 伏（交流）或 220-240 伏（交流）电压，频率为 50/60 赫兹。
注意： 为防止损坏产品，请仅使用产品附带的电源线。

EN

1. **Connect the phone cord for fax.** A country/region specific adapter for the RJ11 telephone cord may be required to connect to the telephone jack.
OPTIONAL: To connect an extension phone, connect another phone cord to the bottom phone port.
2. **Connect the power cord between the product and a grounded AC outlet, and turn on the product.** Make sure your power source is adequate for the product voltage rating. The voltage rating is on the product label. The product uses either 100-127 Vac or 220-240 Vac and 50/60 Hz.
CAUTION: To prevent damage to the product, use only the power cord that is provided with the product.

