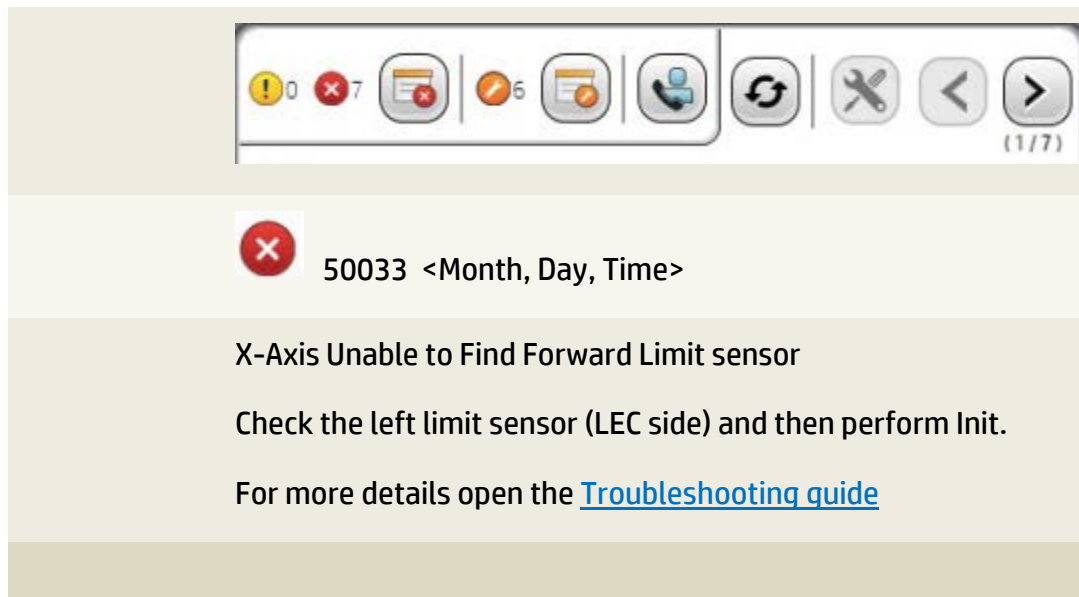


FB10000 Error Messages Troubleshooting

Error ID 50033: X-Axis Unable to Find Forward Limit

Error Severity: **Critical**



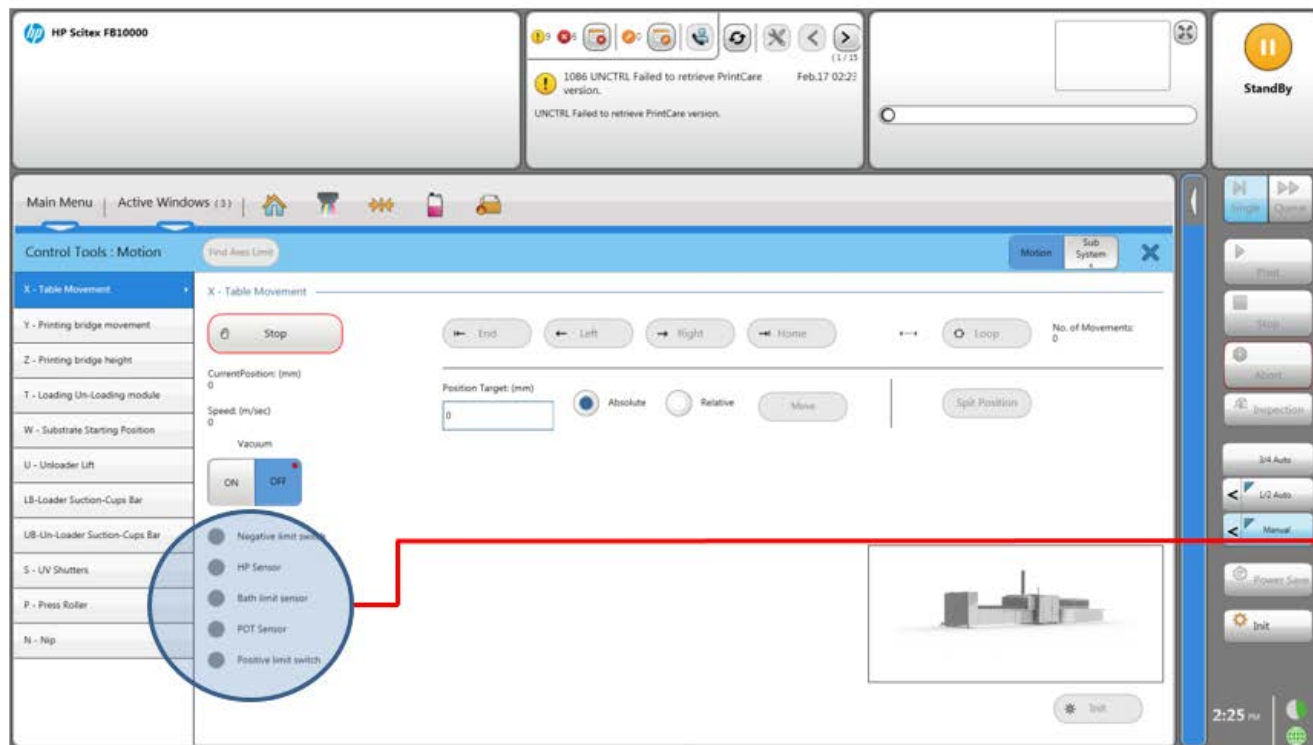
Possible Causes

- [POT Limit sensor is faulty/not calibrated](#)
- [Wiring is disconnected or faulty](#)

Recommended Actions

POT sensor is faulty/not calibrated

1. Open the Control Tools application.
2. Verify that the POT sensor indicator reacts to the flag crossing during X initialize.



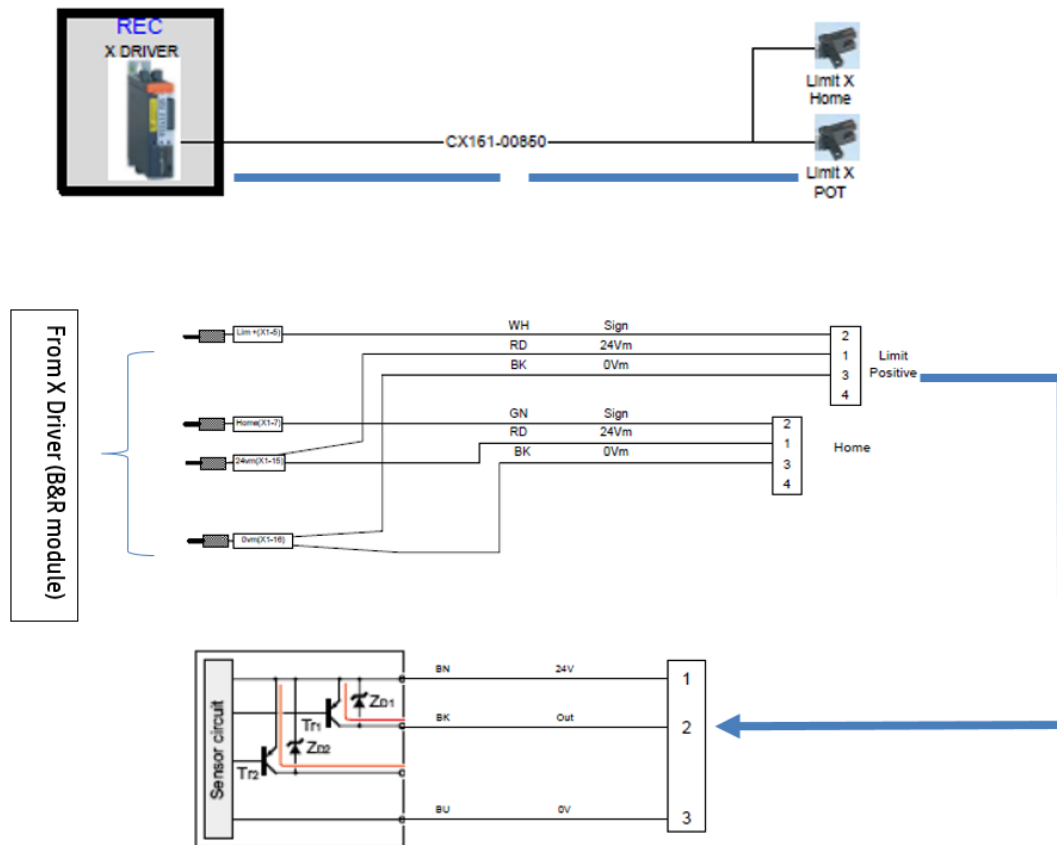
3. Verify that the sensor reacts to the movement of the X axis (table) by manually moving the table.

Note: To be able to move the table manually, press the green button located in the bridge assy to release the resistance of the 2K10 resistors.

4. If the sensor is faulty or disconnected replace it.
5. Check the entire wiring path leading from the specific sensor/limit to the driver.

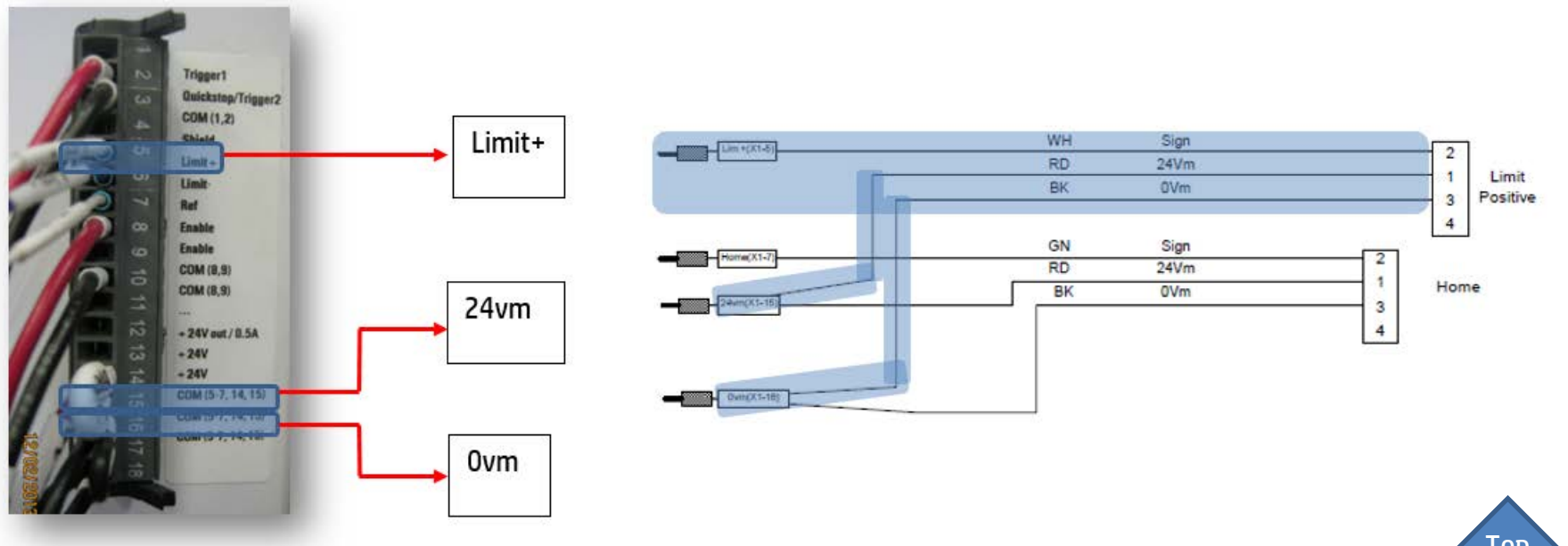
Wiring is disconnected or faulty

6. Check along the X-limit positive (POT) wiring path described below



[Top](#)

7. Check the 24v wires in the driver connections (X1-5 – output Signal from the sensor) & (X1-15 – supply to the sensor).



8. Check the 24v feeding voltage to the driver (X1-8).

