



Installation Instructions

# HP Retail Integrated 7-inch CFD



L6015tm  
L6017tm

RP7 7800  
RP7 7100

Copyright © 2014 Hewlett-Packard Development Company, L.P. The information contained herein is subject to change without notice. Printed in

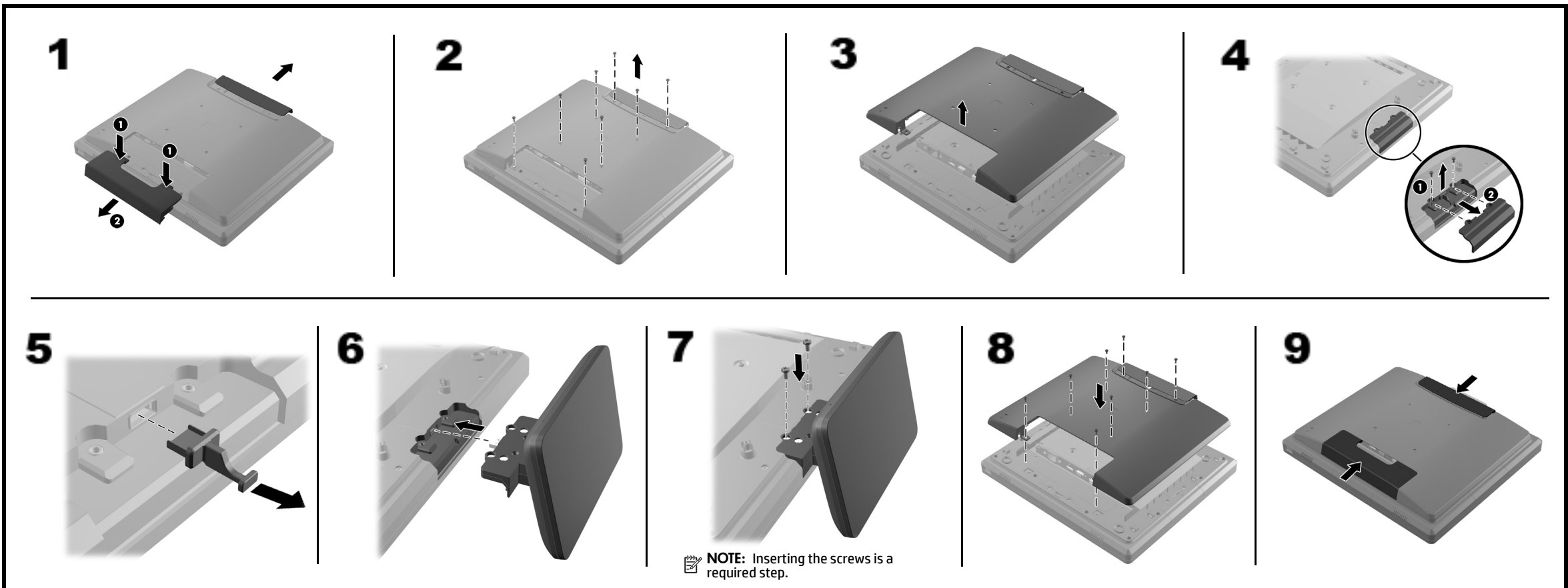
First Edition: January 2014



758427-B21

**NOTE:** Refer to the *HP L6015tm and L6017tm Retail Touch Monitors User Guide*, the *HP RP7 Retail System Model 7800 Hardware Reference Guide*, or the *HP RP7 Retail System Model 7100 Hardware Reference Guide* at [www.hp.com](http://www.hp.com) for detailed instructions on installing USB modules.

## HP L6015tm and L6017tm Retail Touch Monitors



## Before Your Begin

Before installing the liquid-crystal display (LCD), be sure to power off the system and disconnect the power cord from the power outlet.

**WARNING!** To avoid the risk of serious injury or damage to the system, ensure that the power cord is unplugged from the electrical outlet at the wall before installing the LCD. Failure to do so may expose you to the risk of electric shock.

**NOTE:** For regulatory and safety notices, refer to the *Product Notices* included with your product.

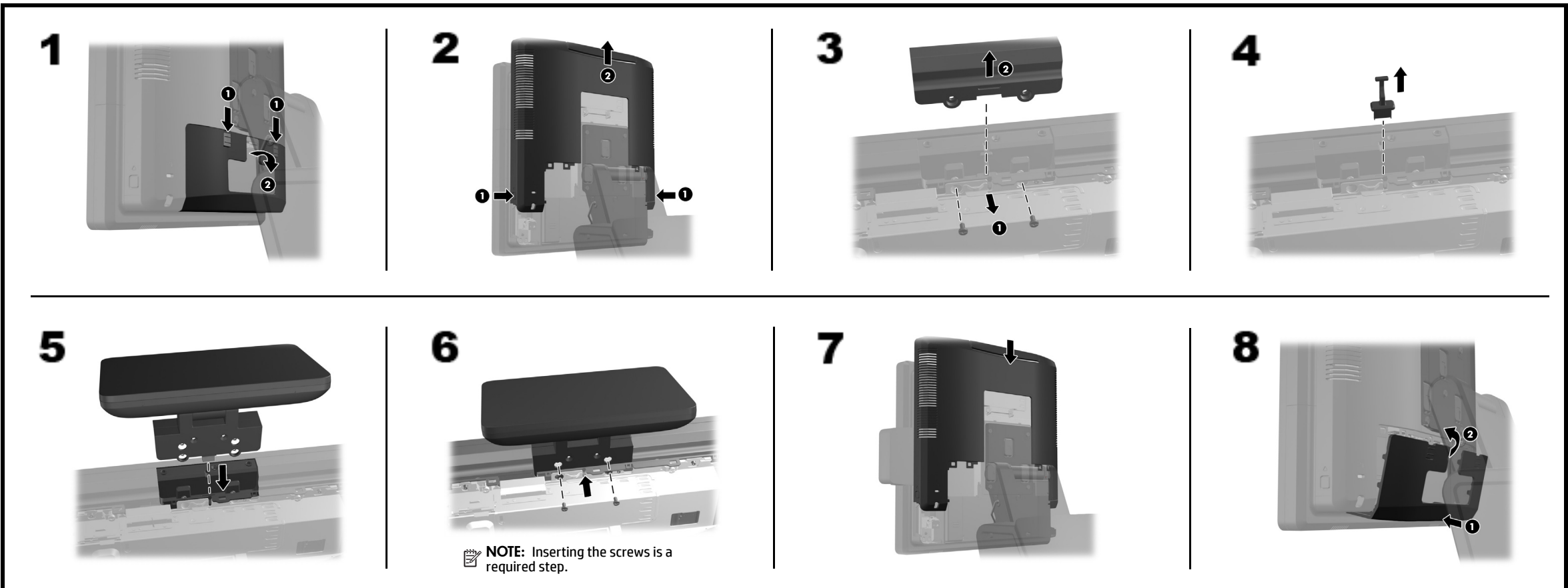
## Configuring the LCD

To configure the LCD, refer to the *HP Point of Sale Configuration Guide* (available in English only). The guide is available on the HP factory image of the RP7 system's hard drive and at [www.hp.com](http://www.hp.com). To access the guide on the factory image:

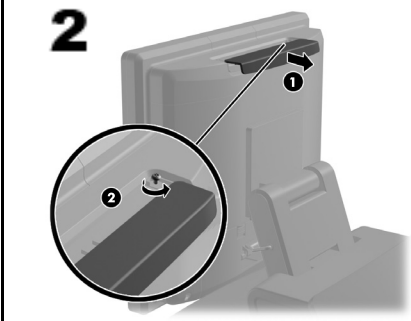
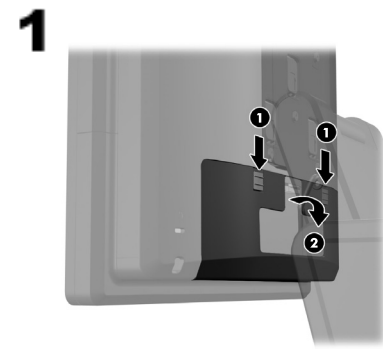
- In Windows XP or Windows Embedded POSReady 2009, select **Start > All Programs > HP Point of Sale Information**.
- In Windows 7, Windows Embedded POSReady 7, Windows 8.x, or Industry 8.1, select **Start > HP Point of Sale Information**.

Check [www.hp.com/support](http://www.hp.com/support) for updated software or documentation that became available between the time your product was manufactured and delivered to you.

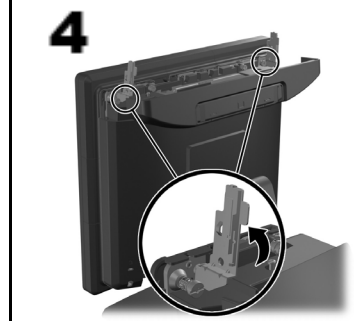
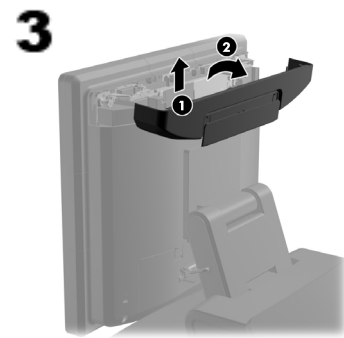
## HP RP7 Retail System Model 7800



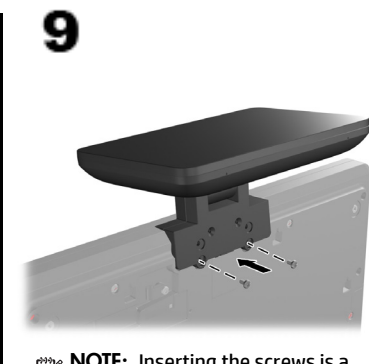
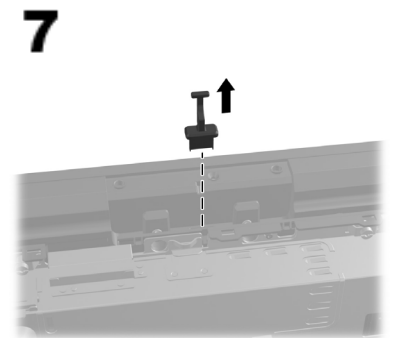
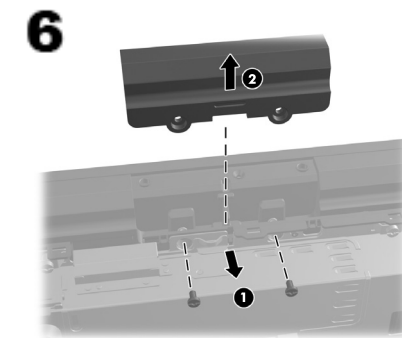
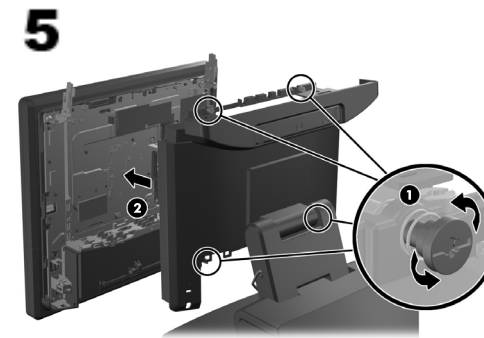
## HP RP7 Retail System Model 7100



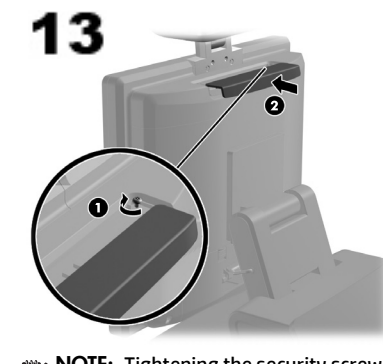
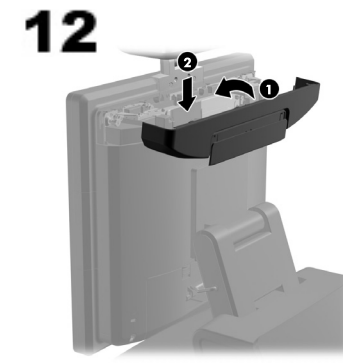
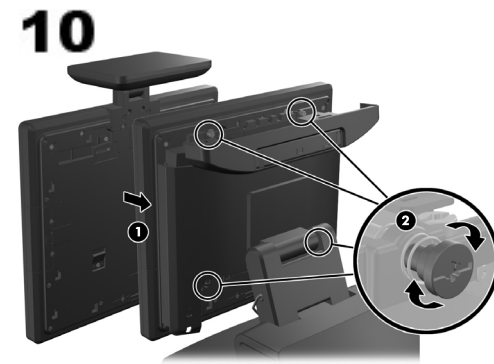
**NOTE:** This step may not be necessary if the security screw is already loosened.



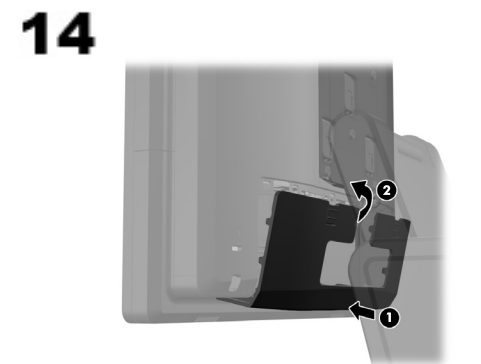
**CAUTION:** You must rotate antenna brackets up to remove front panel.



**NOTE:** Inserting the screws is a required step.



**NOTE:** Tightening the security screw is optional.



### Adjusting the LCD Screen

There are three small holes on the rear of the LCD used to adjust the screen. Insert a thin metal rod, such as a paper clip, into the holes to make the adjustments.

- Top hole - turns power on and off
- Middle hole - decreases brightness
- Bottom hole - increases brightness

### Online Technical Support

For the online access to technical support information, self-solve tools, online assistance, community forums or IT experts, broad multivendor knowledge base, monitoring and diagnostic tools, go to <http://www.hp.com/support>.