



LaserJet Pro M501 Getting Started Guide



English..... 1

Bahasa Indonesia... 4

한국어..... 8

ไทย..... 11

繁体中文..... 14

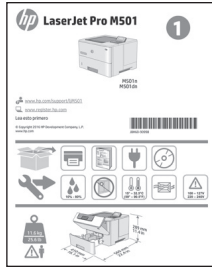
Tiếng Việt..... 17

! IMPORTANT:

Follow **Steps 1 - 2** on the printer hardware setup poster, and then continue with **Step 3**.

www.hp.com/support/ljM501

www.register.hp.com



3. Set up the control panel

After turning on the printer, wait for it to initialize. To navigate the control panel, use the arrow buttons and the **OK** button. Follow the prompts on the control panel to configure these settings:

- Language
- Location
- Default Settings

Under **Default Settings** select one of these options:

- **Self-managed:** Optimized default settings for most users that include guided setup and configuration steps and automatic updates.
- **IT-managed:** Optimized default settings for fleet manageability.

Settings are fully customizable after initial setup.

NOTE: Select **Print Information Sheet** to print a page that instructs how to change the default settings.

4. Select the connection method

USB connection directly between the printer and the computer

Use an A-to-B type USB cable (not included with all models).

Windows

1. Do not connect the USB cable before installing the software. If the cable is already connected, disconnect it before continuing. The installation process prompts to connect the cable at the appropriate time.

2. Continue with “5. Locate or download the software installation files”

NOTE: During software installation, select the option to **Directly connect this computer using a USB cable.** (Windows only)

Mac

1. For Mac, connect the USB cable between the computer and the printer before installing the software.
2. Continue with “5. Locate or download the software installation files”

Wired (Ethernet) network connection

Use a standard network cable. (Cable not included.)

1. Connect the network cable to the printer and to the network. Wait a few minutes for the printer to acquire a network address.
2. On the control panel, view the display while it is in the Ready state. If an IP address is listed, the network connection has been established. If not, wait a few more minutes and try again. Note the IP address for use during software installation. **Example IP address:** 192.168.0.1

To manually configure the IP address, see “Manually configure the IP address.”

3. Continue with “5. Locate or download the software installation files”

NOTE: During software installation, select the option to **Connect through a network.** (Windows only).

Manually configure the IP address

See the printer user guide for information on how to manually configure the IP address. See the “Troubleshooting” section of this guide.



J8H60-90995

5. Locate or download the software installation files

Download from the Web

HP Easy Start

1. Go to 123.hp.com.
2. Select **HP LaserJet Printers**, and then click **Begin**.
3. Follow the on-screen instructions. Follow the prompts to save the file to the computer.
4. Launch the software file from the folder where the file was saved, and continue with “6. Install the software.”

Product support Web site

1. Go to www.hp.com/support/ljm501.
2. Under **Download options**, click **drivers, software, & firmware**, and then select the appropriate operating system.
3. From **Driver - Product Installation Software**, determine which software option to use, and then click the **Download** button next to it. Follow the prompts to save the file to the computer.
4. Launch the software file from the folder where the file was saved, and continue with “6. Install the software.”

Install from the printer CD

For Windows, the software installation files are provided on the CD that came with the printer.

For OS X, the file on the CD includes a link to download the files from the Web.

1. Insert the printer CD into the computer.
2. Continue with “6. Install the software.”


Install notes

For more details about the software for the printer, see the install notes file on the printer CD.

6. Install the software

Windows solution

1. The software installer detects the language of the operating system, and then it displays the main menu of the installation program in the same language. When installing from the CD, if the installer program does not start after 30 seconds, browse the CD drive on the computer and launch the file named SETUP.EXE.
2. The **Software Selection** screen details the software to be installed.
 - The recommended software installation includes the print driver and software for all available printer features.
 - To customize the software installed, click the **Customize software selections** link. When finished, click the **Next** button.
3. Follow the on-screen instructions to install the software.
4. When prompted to select a connection type, select the appropriate option for the type of connection:
 - **Directly connect this computer using a USB cable**
 - **Connect through a network**

 **NOTE:** When connecting through a network, the easiest way to detect the printer is to select **Automatically find my printer on the network**.

 **NOTE:** For wireless installation, select the option to **Help me set up a first-time wireless connection**, and then select **Yes, retrieve the wireless settings on my computer**.

OS X solution

1. The software installer detects the language of the operating system, and then it displays the main menu of the installation program in the same language.
2. Follow the on-screen instructions to install the software. When prompted, connect the printer using the appropriate cable for the connection.
3. At the end of the software installation process, use the **HP Utility Setup Assistant** to configure printer options.

Install notes

Not all software components are available for all operating systems. For more information, see the install notes file on the printer CD.

7. Set up mobile printing (optional)

To print from a phone or tablet, connect the device to the same network as the printer.

Apple iOS devices (AirPrint): Open the item to print, and select the **Action** icon. Select **Print**, select the printer, and then select **Print**.

Newer Android devices (4.4 or newer): Open the item to print, and select the **Menu** button. Select **Print**, select the printer, and select **Print**.

Some devices require downloading the HP Print Service plugin app from the Google Play store.


Older Android devices (4.3 or older): Download the HP ePrint app from the Google Play store.

Windows Phone: Download the HP AiO Remote app from the Windows Store.

Learn more about mobile printing

To learn more about other mobile printing options, including additional ePrint solutions, scan the QR code, or see the “Mobile printing” section of the user guide.



 **NOTE:** Printing from a wireless device requires a wireless network connection.



8. Set up HP ePrint via email (optional)

Use HP ePrint via email to print documents by sending them as an email attachment to the printer's email address from any email-enabled device, even from devices that are not on the same network.

To use HP ePrint via email, the printer must meet these requirements:

- The printer must be connected to a wired network and have Internet access.
- HP Web Services must be enabled on the printer, and the printer must be registered with HP Connected.

Enable HP Web Services

 **NOTE:** Before enabling HP Web Services, verify that the printer is connected to a network. Also, verify that HP Web Services was not enabled during the initial printer setup.

1. Press the **OK** button.
2. Open the **HP Web Services** menu.
3. Select **Print Information Sheet**. The printer will print the page.

4. Open the HP Embedded Web Server. Go to a network-connected computer, open a browser window, and type the IP address shown on the information sheet in the address box, and then press **ENTER**.



NOTE: The HP EWS provides access to many other advanced printer settings as well.

5. In the HP Embedded Web Server, click the **HP Web Services** tab.
6. Click the **Enable** button.
The printer enables Web Services. The information page contains a printer code necessary to register the HP printer at HP Connected.
7. Go to www.hpconnected.com to create an HP ePrint account and complete the setup process.

Troubleshooting

User guide

The user guide includes printer usage and troubleshooting information. It is available on the printer CD and on the Web:

1. Go to www.hp.com/support/ijM501.
2. Click **Manuals**.

For Windows, the user guide is copied to the computer during the recommended software installation.

Windows® XP, Windows Vista®, Windows® 7, and Windows® 10: Click **Start**, select **Programs, All Programs**, or **All Apps**, select **HP**, select the folder for the HP printer, and then select **Help**.

Windows® 8:

On the **Start** screen, right-click an empty area on the screen, click **All Apps** on the app bar, click the icon with the printer's name, and then select **Help**.

Check for firmware updates

1. On the printer control panel, press the **OK** button.
2. Open the **Service** menu.
3. Select **LaserJet Update**.
4. Select **Check for Updates Now**.

Additional support resources

For HP's all-inclusive help for the printer, go to www.hp.com/support/ijM501:

- Solve problems
- Find advanced configuration instructions
- Download software updates
- Join support forums
- Find warranty and regulatory information
- Access mobile printing resources



Wired (Ethernet) network connection

- Verify that the printer is attached to the correct network port using a cable of the correct length.
- Verify that the lights next to the network port are lit.
- Verify that the print driver is installed on the computer.
- Test the network connection by pinging the printer:
 - Windows:** Click **Start > Run**. Type **cmd**, and press **ENTER**. Type **ping**, type a space, type the printer IP address, and then press **ENTER**. **Example IP address:** 192.168.0.1
 - OS X:** Open the Network Utility, and type the IP address in the **ping** pane. Press **ENTER**. **Example IP address:** 192.168.0.1
- If the window displays round-trip times, the network is working.
- If the ping does not work, try restarting the printer and recheck all of the connection steps.

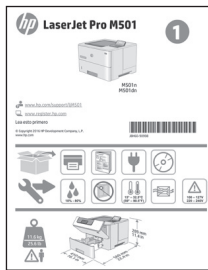


Panduan Persiapan LaserJet Pro M501



PENTING:

Ikuti **Langkah 1-2** pada poster konfigurasi perangkat keras printer, lalu lanjutkan dengan **Langkah 3**.



www.hp.com/support/ljM501



www.register.hp.com

3. Mengkonfigurasi panel kontrol

Setelah menghidupkan printer, tunggu proses inialisasi. Untuk menavigasikan panel kontrol, gunakan tombol panah dan tombol **OK**. Ikuti perintah pada panel kontrol untuk mengkonfigurasi pengaturan berikut:

- Bahasa
- Lokasi
- Pengaturan Default

Dalam **Default Settings** (Pengaturan Default), pilih salah satu dari pilihan berikut:

- **Self-managed** (Dikelola sendiri): Pengaturan default yang dioptimalkan untuk sebagian besar pengguna yang mencakup langkah-langkah pengaturan dan konfigurasi terpandu, serta pembaruan otomatis.
- **IT-managed** (Dikelola TI): Pengaturan default yang dioptimalkan untuk kemampuan pengelolaan cepat.

Pengaturan dapat disesuaikan sepenuhnya setelah konfigurasi awal.

CATATAN: Pilih **Print Information Sheet** (Cetak Lembar Informasi) untuk mencetak halaman yang menunjukkan cara mengubah pengaturan default.

4. Memilih metode sambungan

Sambungan USB secara langsung antara printer dan komputer

Gunakan kabel USB jenis A ke B (tidak disertakan dengan semua model).

Windows

1. Jangan sambungkan kabel USB sebelum menginstal perangkat lunak. Jika telah tersambung, lepaskan kabel sebelum melanjutkan. Proses penginstalan meminta untuk menyambungkan kabel pada waktu yang tepat.
2. Lanjutkan dengan "**5. Mencari atau men-download file instalasi perangkat lunak**"

CATATAN: Saat penginstalan perangkat lunak berlangsung, tetapkan pilihan ke **Directly connect this computer using a USB cable** (Sambungkan komputer ini secara langsung menggunakan kabel USB). (hanya Windows)

Mac

1. Untuk Mac, sambungkan kabel USB antara komputer dan printer sebelum menginstal perangkat lunak.
2. Lanjutkan dengan "**5. Mencari atau men-download file instalasi perangkat lunak**"



Sambungan jaringan berkabel (Ethernet)

Gunakan kabel jaringan standar. (Kabel tidak disertakan.)

1. Sambungkan kabel jaringan ke printer dan jaringan. Tunggu beberapa menit agar printer mendapatkan alamat jaringan.
2. Di panel kontrol, lihat layar saat printer berada dalam status Ready (Siap). Jika alamat IP tercantum dalam daftar, berarti sambungan jaringan telah ditetapkan. Jika tidak, tunggu beberapa menit, lalu coba lagi. Catat alamat IP untuk digunakan saat penginstalan perangkat lunak berlangsung.
Contoh alamat IP: 192.168.0.1
Untuk mengkonfigurasi alamat IP secara manual, lihat "**Mengkonfigurasi alamat IP secara manual**".
3. Lanjutkan dengan "**5. Mencari atau men-download file instalasi perangkat lunak**"

CATATAN: Saat penginstalan perangkat lunak berlangsung, tetapkan pilihan ke **Connect through a network** (Sambungkan melalui jaringan). (hanya Windows).

Mengkonfigurasi alamat IP secara manual

Untuk mendapatkan informasi tentang cara mengkonfigurasi alamat IP secara manual, lihat panduan pengguna printer. Lihat bagian "**Mengatasi masalah**" dalam panduan ini.

5. Mencari atau men-download file instalasi perangkat lunak

Men-download dari Web

HP Easy Start

1. Kunjungi 123.hp.com.
2. Pilih **HP LaserJet Printers** (Printer HP LaserJet), lalu klik **Begin** (Mulai).
3. Ikuti petunjuk di layar. Ikuti perintah dalam jendela untuk menyimpan file ke komputer.
4. Jalankan file perangkat lunak dari folder tempat menyimpan file, lalu lanjutkan dengan "6. Menginstal perangkat lunak".

Situs web dukungan produk

1. Kunjungi www.hp.com/support/lijM501.
2. Dalam **Download options** (Pilihan download), klik **drivers, software, & firmware** (driver, perangkat lunak, & firmware), lalu pilih sistem operasi yang sesuai.
3. Dari **Driver - Product Installation Software** (Driver - Perangkat Lunak Penginstalan Produk), tentukan pilihan perangkat lunak yang akan digunakan, lalu klik tombol **Download** di sebelahnya. Ikuti perintah dalam jendela untuk menyimpan file ke komputer.
4. Jalankan file perangkat lunak dari folder tempat menyimpan file, lalu lanjutkan dengan "6. Menginstal perangkat lunak".

Menginstal dari CD printer

Untuk Windows, file instalasi perangkat lunak tersedia di CD yang disertakan bersama printer.

Untuk OS X, file di CD berisi link untuk men-download file dari Web.

1. Masukkan CD printer ke komputer.
2. Lanjutkan dengan "6. Menginstal perangkat lunak".


Catatan penginstalan

Untuk informasi lebih rinci tentang perangkat lunak untuk printer, lihat file catatan penginstalan di CD printer.

6. Menginstal perangkat lunak

Solusi Windows

1. Penginstal perangkat lunak menemukan bahasa sistem operasi, lalu menampilkan menu utama program penginstalan dalam bahasa yang sama. Saat melakukan penginstalan dari CD, jika program penginstal tidak dimulai setelah 30 detik, telusuri drive CD pada komputer, lalu jalankan file SETUP.EXE.
2. Layar **Software Selection** (Pilihan Perangkat Lunak) merinci perangkat lunak yang akan diinstal.
 - Penginstalan perangkat lunak yang direkomendasikan mencakup driver cetak dan perangkat lunak untuk semua fitur printer yang tersedia.
 - Untuk menyesuaikan perangkat lunak yang diinstal, klik link **Customize software selections** (Sesuaikan pilihan perangkat lunak). Setelah selesai, klik tombol **Next** (Berikutnya).
3. Ikuti petunjuk di layar untuk menginstal perangkat lunak.
4. Bila diminta untuk memilih jenis sambungan, gunakan pilihan yang tepat untuk jenis sambungan:
 - **Directly connect this computer using a USB cable** (Sambungkan komputer ini secara langsung menggunakan kabel USB)
 - **Connect through a network** (Sambungkan melalui jaringan)

 **CATATAN:** Saat menyambung melalui jaringan, cara termudah untuk menemukan printer adalah dengan memilih **Automatically find my printer on the network** (Temukan printer saya di jaringan secara otomatis).

 **CATATAN:** Untuk penginstalan nirkabel, tetapkan pilihan ke **Help me set up a first-time wireless connection** (Bantu saya mengkonfigurasi sambungan nirkabel untuk pertama kali), lalu pilih **Yes, retrieve the wireless settings on my computer** (Ya, ambil pengaturan nirkabel di komputer saya).

Solusi OS X

1. Penginstal perangkat lunak menemukan bahasa sistem operasi, lalu menampilkan menu utama program penginstalan dalam bahasa yang sama.
2. Ikuti petunjuk di layar untuk menginstal perangkat lunak. Bila diminta, sambungkan printer menggunakan kabel yang sesuai untuk sambungan.
3. Pada akhir proses penginstalan perangkat lunak, gunakan **HP Utility Setup Assistant** (Bantuan Konfigurasi Utilitas HP) untuk mengkonfigurasi pilihan printer.

Catatan penginstalan

Tidak semua komponen perangkat lunak didukung pada semua sistem operasi. Untuk informasi lebih lanjut, lihat file catatan penginstalan di CD printer.

7. Mengkonfigurasi pencetakan seluler (opsional)

Untuk mencetak dari telepon atau tablet, sambungkan perangkat ke jaringan yang sama dengan printer.


Perangkat Apple iOS (AirPrint): Buka item yang akan dicetak, lalu pilih ikon **Action** (Tindakan). Pilih **Print** (Cetak), pilih printer, lalu pilih **Print** (Cetak).

Perangkat Android versi lebih baru (4.4 atau versi yang lebih baru): Buka item yang akan dicetak, lalu pilih tombol **Menu**. Pilih **Print** (Cetak), pilih printer, lalu pilih **Print** (Cetak).

Perangkat tertentu mengharuskan Anda men-download aplikasi plugin HP Print Service dari Google Play store.

Perangkat Android versi lebih lama (4.3 atau versi yang lebih lama): Download aplikasi HP ePrint dari Google Play Store.

Windows Phone: Download aplikasi HP AiO Remote dari Windows Store.

 **CATATAN:** Pencetakan dari perangkat nirkabel memerlukan sambungan jaringan nirkabel.

Selengkapnya tentang pencetakan seluler

Untuk mengetahui selengkapnya tentang pilihan pencetakan seluler lainnya, termasuk solusi tambahan ePrint, pindai kode QR, atau lihat bagian "Pencetakan seluler" dalam panduan pengguna.




8. Mengatur HP ePrint via email (opsional)

Gunakan HP ePrint via email untuk mencetak dokumen dengan mengirimnya sebagai lampiran email ke alamat email printer dari perangkat apa pun yang mendukung email, bahkan dari perangkat di jaringan yang berbeda.

Untuk menggunakan HP ePrint via email, printer harus memenuhi persyaratan ini:


- Printer harus disambungkan ke jaringan berkabel dan memiliki akses Internet.
- HP Web Services harus diaktifkan pada printer dan printer harus terdaftar di HP Connected.

Mengaktifkan HP Web Services

 **CATATAN:** Sebelum mengaktifkan HP Web Services, pastikan printer telah tersambung ke jaringan. Selain itu, pastikan HP Web Services tidak diaktifkan selama konfigurasi printer awal.

1. Tekan tombol **OK**.
2. Buka menu **HP Web Services**.
3. Pilih **Print Information Sheet** (Cetak Lembar Informasi). Printer akan mencetak halaman.

4. Buka HP Embedded Web Server. Beralih ke komputer yang tersambung ke jaringan, buka jendela browser, lalu ketik alamat IP yang ditampilkan dalam kotak alamat di lembar informasi, lalu tekan **ENTER**.

 **CATATAN:** HP EWS juga memberikan akses ke berbagai pengaturan printer tingkat lanjut lainnya.

5. Di HP Embedded Web Server, klik tab **HP Web Services**.
6. Klik tombol **Enable** (Aktifkan). Printer akan mengaktifkan Web Services (Layanan Web). Halaman informasi berisi kode printer yang diperlukan untuk mendaftarkan printer HP di HP Connected.
7. Kunjungi www.hpconnected.com untuk membuat akun HP ePrint dan menyelesaikan proses konfigurasi.

Mengatasi masalah

Panduan pengguna

Panduan pengguna mencakup informasi tentang penggunaan printer dan mengatasi masalah. Panduan pengguna tersedia pada CD printer dan web:

1. Kunjungi www.hp.com/support/ljM501.
2. Klik **Manuals** (Panduan).

Untuk Windows, panduan pengguna akan disalin ke komputer saat penginstalan perangkat lunak yang direkomendasikan berlangsung.

Windows® XP, Windows Vista®, Windows® 7, dan Windows® 10:

Klik **Start** (Mulai), pilih **Programs** (Program), **All Programs** (Semua Program), atau **All Apps** (Semua Aplikasi), pilih **HP**, pilih folder untuk printer HP, lalu pilih **Help** (Bantuan).

Windows® 8:

Di layar **Start** (Mulai), klik kanan area kosong di layar, klik **All Apps** (Semua Aplikasi) pada panel aplikasi, klik ikon dengan nama printer, lalu pilih **Help** (Bantuan).

Memeriksa pembaruan firmware

1. Di panel kontrol printer, tekan tombol **OK**.
2. Buka menu **Service** (Layanan).
3. Pilih **LaserJet Update** (Pembaruan LaserJet).
4. Pilih **Check for Updates Now** (Periksa Pembaruan Sekarang).

Sumber dukungan tambahan

Untuk bantuan lengkap tentang printer dari HP, kunjungi www.hp.com/support/ljM501:

- Mengatasi masalah
- Menemukan petunjuk konfigurasi tingkat lanjut
- Men-download pembaruan perangkat lunak
- Bergabung dengan forum dukungan
- Mencari informasi jaminan dan peraturan
- Mengakses sumber pencetakan seluler



Sambungan jaringan berkabel (Ethernet)

- Pastikan printer telah tersambung ke port jaringan yang benar menggunakan kabel dengan panjang yang benar.
- Pastikan lampu di sebelah port jaringan telah menyala.
- Pastikan driver cetak telah diinstal di komputer.
- Uji sambungan jaringan dengan melakukan ping pada printer:

Windows: Klik **Start** (Mulai) > **Run** (Jalankan). Ketik **cmd**, lalu tekan **ENTER**. Ketik **ping**, ketik spasi, ketik alamat IP printer, lalu tekan **ENTER**. **Contoh alamat IP:** 192.168.0.1

OS X: Buka Network Utility (Utilitas Jaringan), lalu ketik alamat IP di jendela **ping**. Tekan **ENTER**. **Contoh alamat IP:** 192.168.0.1

- Jika jendela menampilkan waktu respons (round-trip time), berarti jaringan berfungsi.
- Jika ping tidak berjalan, coba hidupkan ulang printer, lalu periksa kembali semua langkah sambungan.

English..... 1
 Bahasa Indonesia.... 4
한국어..... 8
 ไทย..... 11
 繁体中文..... 14
 Tiếng Việt..... 17



LaserJet Pro M501 시작 설명서



중요:
 프린터 하드웨어
 설치 포스터의 **1~2
 단계** 완료 후 **3단계**를
 진행하십시오.



www.hp.com/support/ljM501



www.register.hp.com

3. 제어판 설정

프린터를 켜 후 초기화될 때까지 기다립니다. 제어판에서 화살표 버튼과 확인 버튼을 사용하여 이동합니다. 제어판에 표시되는 메시지에 따라 다음과 같은 설정을 구성합니다.

- 언어
- 위치
- 기본 설정

기본 설정에서 다음 옵션 중 하나를 선택합니다.

- **자가 관리:** 설정 안내와 구성 단계 및 자동 업데이트를 포함하여 대부분의 사용자에게 최적화된 기본 설정입니다.
- **IT 관리:** 장비 관리성에 최적화된 기본 설정입니다.

설정은 초기 설정 후 모두 사용자 요구에 맞게 설정할 수 있습니다.

참고: 기본 설정을 변경하는 방법에 대해 설명하는 페이지를 인쇄하려면 **인쇄 정보 시트**를 선택하십시오.

4. 연결 방식 선택



프린터와 컴퓨터간 직접 USB 연결

A-B형 USB 케이블을 사용합니다. (모든 모델에 미포함)

Windows

1. 소프트웨어를 설치하기 전에 USB 케이블을 연결하지 마십시오. 이미 케이블이 연결되어 있는 경우 먼저 연결을 해제하십시오. 설치 과정 중에 케이블을 연결하라는 메시지가 표시됩니다.

2. "5. 소프트웨어 설치 파일을 찾거나 다운로드"로 진행합니다

참고: 소프트웨어를 설치하는 동안 "**USB 케이블을 사용하여 이 컴퓨터에 직접 연결**" 옵션을 선택합니다. (Windows만 해당)

Mac

1. Mac의 경우, 소프트웨어를 설치하기 전에 USB 케이블을 컴퓨터와 프린터에 연결합니다.
2. "5. 소프트웨어 설치 파일을 찾거나 다운로드"로 진행합니다



유선(이더넷) 네트워크 연결

표준 네트워크 케이블을 사용합니다. (케이블 미포함)

1. 네트워크 케이블을 프린터와 네트워크에 연결합니다. 프린터에서 네트워크 주소를 받을 때까지 몇 분 대기합니다.
 2. 제어판이 준비 상태에 있을 때 디스플레이를 확인합니다. IP 주소가 표시되면 네트워크 연결이 설정된 것입니다. 그렇지 않은 경우 몇 분 더 기다린 다음 다시 시도합니다. 소프트웨어 설치 중 사용할 IP 주소를 메모합니다. **IP 주소 예:** 192.168.0.1 IP 주소를 수동으로 구성하려면 "**IP 주소 수동으로 구성**"을 참조하십시오.
 3. "5. 소프트웨어 설치 파일을 찾거나 다운로드"로 진행합니다
- 참고:** 소프트웨어를 설치하는 동안 "**네트워크를 통해 연결**" 옵션을 선택합니다. (Windows만 해당).

① IP 주소 수동으로 구성

수동으로 IP 주소를 구성하는 방법에 대한 자세한 내용은 프린터 사용 설명서를 참조하십시오. 이 설명서의 "**문제 해결**" 섹션을 참조하십시오.

5. 소프트웨어 설치 파일을 찾거나 다운로드

웹에서 다운로드

HP Easy Start

1. 123.hp.com으로 이동합니다.
2. **HP LaserJet 프린터**를 선택한 다음 **시작**을 클릭합니다.
3. 화면의 지시에 따릅니다. 표시되는 알림에 따라 컴퓨터에 파일을 저장합니다.
4. 파일이 저장된 폴더에서 소프트웨어 파일을 실행하고 **"6. 소프트웨어 설치"**로 진행합니다.

제품 지원 웹 사이트

1. www.hp.com/support/ijM501로 이동합니다.
2. **다운로드 옵션** 아래에서 **드라이버, 소프트웨어 및 펌웨어**를 클릭한 다음, 적절한 운영 체제를 선택합니다.
3. **드라이버 - 제품 설치 소프트웨어**에서 사용할 소프트웨어 옵션을 선택한 다음, 옆에 있는 **다운로드** 버튼을 클릭합니다. 표시되는 알림에 따라 컴퓨터에 파일을 저장합니다.
4. 파일이 저장된 폴더에서 소프트웨어 파일을 실행하고 **"6. 소프트웨어 설치"**로 진행합니다.

프린터 CD에서 설치

Windows의 경우, 소프트웨어 설치 파일은 프린터와 함께 제공된 CD에 있습니다.

OS X의 경우, CD 파일에는 웹에서 파일을 다운로드할 수 있는 링크가 포함되어 있습니다.

1. 컴퓨터에 프린터 CD를 넣습니다.
2. **"6. 소프트웨어 설치"**를 진행합니다.


① 설치 노트


프린터용 소프트웨어에 대한 자세한 내용은 프린터 CD의 설치 노트 파일을 참조하십시오.

6. 소프트웨어 설치

Windows 솔루션

1. 소프트웨어 설치 프로그램에서 운영 체제의 언어를 감지한 후 설치 프로그램의 기본 메뉴를 동일한 언어로 표시합니다. CD에서 설치하는 경우 30초 후에도 설치 프로그램이 시작되지 않으면 컴퓨터의 CD 드라이브를 검색하여 이름이 SETUP.EXE 인 파일을 실행합니다.
2. **소프트웨어 선택** 화면에 설치할 소프트웨어에 대한 세부 정보가 표시됩니다.
 - 권장 소프트웨어 설치에는 제공되는 모든 프린터 기능을 위한 인쇄 드라이버 및 소프트웨어가 포함됩니다.
 - 설치된 소프트웨어를 사용자 요구에 맞게 설정하려면 **소프트웨어 선택 사용자 설정** 링크를 클릭합니다. 작업이 끝나면 **다음** 버튼을 클릭합니다.
3. 화면의 지시에 따라 소프트웨어를 설치합니다.
4. 연결 유형을 선택하라는 메시지가 표시되면 연결 유형에 적합한 옵션을 선택합니다.
 - **USB 케이블을 사용하여 이 컴퓨터에 직접 연결**
 - **네트워크를 통해 연결**

 **참고:** 네트워크를 통해 연결할 때 프린터를 검색하는 가장 쉬운 방법은 **네트워크에서 내 프린터 자동으로 찾기**를 선택하는 것입니다.

 **참고:** 무선 설치의 경우 **최초 무선 연결 설정 지원** 옵션을 선택한 다음 **"예, 내 컴퓨터의 무선 설정을 검색합니다"**를 선택합니다.

OS X 솔루션

1. 소프트웨어 설치 프로그램에서 운영 체제의 언어를 감지한 후 설치 프로그램의 기본 메뉴를 동일한 언어로 표시합니다.
2. 화면의 지시에 따라 소프트웨어를 설치합니다. 알림이 표시되면 연결에 적합한 케이블을 사용하여 프린터를 연결합니다.
3. 소프트웨어 설치 과정 마지막에 **HP 유틸리티 설정 지원**을 사용하여 프린터 옵션을 구성합니다.

① 설치 노트

일부 소프트웨어 구성 요소는 일부 운영 체제에서 사용할 수 없습니다. 자세한 내용은 프린터 CD의 설치 노트 파일을 참조하십시오.

7. 모바일 인쇄 설정(선택 사항)

핸드폰 또는 태블릿에서 인쇄하려면 해당 장치를 프린터와 동일한 무선 네트워크에 연결합니다.


Apple iOS 장치(AirPrint): 인쇄할 항목을 열고 **작업** 아이콘을 선택합니다. **인쇄**를 선택하고 프린터를 선택한 다음 **인쇄**를 선택합니다.

신규 Android 장치(4.4 이상 버전): 인쇄할 항목을 열고 **메뉴** 버튼을 선택합니다. **인쇄**를 선택하고 프린터를 선택한 다음 **인쇄**를 선택합니다.

일부 장치가 Google Play 스토어에서 HP 인쇄 서비스 플러그인 앱을 다운로드하는 데 필요합니다.

이전 Android 장치(4.3 이하 버전): Google Play 스토어에서 HP ePrint 앱을 다운로드합니다.

Windows 폰: Windows 스토어에서 HP AiO Remote 앱을 다운로드합니다.

 **참고:** 무선 장치에서 인쇄를 하려면 무선 네트워크 연결이 필요합니다.

① 모바일 인쇄에 대해 자세히 알아보기

추가 ePrint에 솔루션을 포함한 기타 모바일 인쇄 옵션에 대한 자세한 내용은 QR 코드를 스캔하거나 사용 설명서의 "모바일 인쇄" 섹션을 참조하십시오.





8. 이메일을 통한 HP ePrint 설정(선택 사항)

이메일을 통한 HP ePrint를 사용하면 장치가 동일한 네트워크 상에 없어도 이메일을 사용할 수 있는 모든 장치에서 프린터의 이메일 주소로 문서를 첨부 파일로 전송하여 인쇄할 수 있습니다.

이메일을 통한 HP ePrint를 사용하려면 프린터가 다음 요구 사항을 충족해야 합니다.

- 프린터가 유선 네트워크에 연결되어 있고 인터넷에 접속되어야 합니다.
- 프린터에 HP 웹 서비스가 활성화되어 있어야 하며, HP Connected에 프린터가 등록되어 있어야 합니다.

HP 웹 서비스 활성화

참고: HP 웹 서비스를 활성화하기 전에 컴퓨터가 네트워크에 연결되어 있는지 확인하십시오. 또한 초기 프린터 설정 과정에서 HP 웹 서비스가 활성화되지 않아야 합니다.

1. **확인** 버튼을 누릅니다.
2. **HP 웹 서비스** 메뉴를 엽니다.
3. **인쇄 정보 시트**를 선택합니다. 프린터에서 페이지가 인쇄됩니다.

4. HP 내장 웹 서버를 엽니다. 네트워크 연결 컴퓨터로 이동하여 브라우저 창을 열고 정보 시트에 표시된 IP 주소를 주소란에 입력한 다음 **ENTER**를 누릅니다.

참고: 이 외에도 HP EWS를 통해 다양한 프린터 고급 설정을 이용할 수 있습니다.

5. HP 내장 웹 서버에서 **HP 웹 서비스** 탭을 클릭합니다.
6. **활성화** 버튼을 클릭합니다. 프린터가 웹 서비스를 활성화합니다. 정보 페이지에는 HP 프린터를 HP Connected에 등록하는 데 사용되는 프린터 코드가 있습니다.
7. www.hpconnected.com으로 이동하여 HP ePrint 계정을 만들고 설정 과정을 완료합니다.

문제 해결

사용 설명서

사용 설명서는 프린터 사용법 및 문제 해결 정보를 포함합니다. 프린터 CD 및 웹에서 제공됩니다.

1. www.hp.com/support/ljm501로 이동합니다.

2. **설명서**를 클릭합니다.

Windows의 경우 권장 소프트웨어를 설치하는 동안 사용 설명서가 컴퓨터에 복사됩니다.

Windows® XP, Windows Vista®, Windows® 7 및 Windows® 10: **시작**을 클릭하고, **프로그램**, **모든 프로그램** 또는 **모든 앱**, **HP**를 차례로 선택하고 HP 프린터용 폴더를 선택한 다음 **도움말**을 선택합니다.

Windows® 8:

시작 화면에서 화면의 빈 공간을 마우스 오른쪽 버튼으로 클릭하고, 앱 표시줄에서 **모든 앱**을 클릭한 후, 프린터 이름이 있는 아이콘을 클릭하고 **도움말**을 클릭합니다.

펌웨어 업데이트 확인

1. 프린터 제어판에서 **확인** 버튼을 누릅니다.
2. **서비스** 메뉴를 엽니다.
3. **LaserJet 업데이트**를 선택합니다.
4. **지금 업데이트 확인**을 선택합니다.

추가 지원 리소스

프린터에 대한 모든 것을 포함하는 HP 도움말은 www.hp.com/support/ljm501에서 확인하십시오.

- 문제 해결
- 고급 구성 지침 찾기
- 소프트웨어 업데이트 다운로드
- 지원 포럼 가입
- 보증 및 규정 정보 찾기
- 모바일 인쇄 리소스 액세스

문제 유선(이더넷) 네트워크 연결

- 프린터가 올바른 길이의 케이블을 사용하여 올바른 네트워크 포트에 연결되어 있는지 확인합니다.
- 네트워크 포트 옆에 있는 표시등이 켜져 있는지 확인합니다.
- 프린터 드라이버가 컴퓨터에 설치되어 있는지 확인합니다.
- 프린터에 ping을 수행하여 네트워크 연결을 테스트합니다.

Windows: **시작** > **실행**을 클릭합니다. **cmd**를 입력하고 **ENTER**를 누릅니다. **ping**을 입력한 후 한 칸 띄고 프린터 IP 주소를 입력한 다음 **ENTER**를 누릅니다. **IP 주소 예:** 192.168.0.1

OS X: 네트워크 유틸리티를 열고 ping 창에 **IP 주소**를 입력합니다. **ENTER**를 누릅니다. **IP 주소 예:** 192.168.0.1

- 창에 왕복 시간이 표시되면 네트워크가 작동 중입니다.
- ping이 작동하지 않는 경우, 프린터를 재시작하고 모든 연결 단계를 다시 확인합니다.



คู่มือการเริ่มใช้งาน LaserJet Pro M501

English..... 1

Bahasa Indonesia... 4

한국어..... 8

ไทย..... 11

繁体中文..... 14

Tiếng Việt..... 17

! สิ่งสำคัญ:

ทำตาม **ขั้นตอนที่ 1 - 2** บนโปสเตอร์การตั้งค่า ฮาร์ดแวร์เครื่องพิมพ์ แล้วทำ **ขั้นตอนที่ 3** ต่อ

www.hp.com/support/ljm501

www.register.hp.com

3. การตั้งค่าบนแผงควบคุม

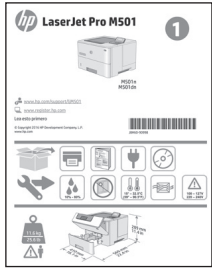
หลังจากเปิดเครื่องพิมพ์แล้วให้รอจนกว่าระบบจะเริ่มขึ้น หากต้องการนำทางโดยใช้แผงควบคุม ให้ใช้ปุ่มลูกศรและปุ่ม **OK** (ตกลง) ทำตามคำแนะนำบนแผงควบคุม เพื่อกำหนดการตั้งค่าดังต่อไปนี้

- ภาษา
- สถานที่
- การตั้งค่าเริ่มต้น

ภายใต้ **การตั้งค่าเริ่มต้น** ให้เลือกตัวเลือกใดตัวเลือกหนึ่งต่อไปนี้

- **จัดการด้วยตนเอง:** การตั้งค่าเริ่มต้นที่มีประสิทธิภาพสำหรับผู้ใช้งานส่วนใหญ่ โดยมีขั้นตอนการตั้งค่าและการกำหนดค่าแบบมีคำแนะนำ และการอัปเดตอัตโนมัติ
- **จัดการด้วย IT:** การตั้งค่าเริ่มต้นที่มีประสิทธิภาพสำหรับความสามารถในการจัดการที่รวดเร็ว จะสามารถกำหนดการตั้งค่าได้เองอย่างเต็มที่ หลังการติดตั้งครั้งแรก

หมายเหตุ: เลือก **Print Information Sheet** (พิมพ์หน้าข้อมูล) เพื่อพิมพ์หน้าที่แนะนำวิธีการเปลี่ยนการตั้งค่าเริ่มต้น



4. เลือกวิธีการเชื่อมต่อ

การเชื่อมต่อ USB โดยตรงระหว่างเครื่องพิมพ์และคอมพิวเตอร์

ใช้สาย USB แบบ A-to-B (ไม่มีรวมมาให้ในทุกรุ่น)

Windows

1. ห้ามเชื่อมต่อสาย USB ก่อนที่จะติดตั้งซอฟต์แวร์ หากเชื่อมต่อสายอยู่แล้วให้ถอดสายออกก่อนดำเนินการต่อ โดยขั้นตอนการติดตั้งจะพร้อมทำให้เชื่อมต่อสายในเวลาที่เหมาะสม

2. ดำเนินการต่อที่ "5. ค้นหาหรือดาวน์โหลดไฟล์การติดตั้งซอฟต์แวร์"

หมายเหตุ: ระหว่างการติดตั้งซอฟต์แวร์ให้เลือกตัวเลือกเพื่อ **Directly connect this computer using a USB cable** (เชื่อมต่อโดยตรงกับคอมพิวเตอร์เครื่องนี้โดยใช้สาย USB) (Windows เท่านั้น)

Mac

1. สำหรับ Mac ให้เชื่อมต่อสาย USB ระหว่างคอมพิวเตอร์และเครื่องพิมพ์ ก่อนที่จะติดตั้งซอฟต์แวร์

2. ดำเนินการต่อที่ "5. ค้นหาหรือดาวน์โหลดไฟล์การติดตั้งซอฟต์แวร์"

การเชื่อมต่อเครือข่ายแบบใช้สาย (อีเทอร์เน็ต)

ใช้สายเคเบิลเครือข่ายมาตรฐาน (ไม่มีสายรวมมาให้)

1. เชื่อมต่อสายเคเบิลเครือข่ายกับเครื่องพิมพ์และกับเครือข่าย รอสองสามนาทีเพื่อให้เครื่องพิมพ์รับแอดเดรสเครือข่าย
2. บนแผงควบคุม ให้ดูหน้าจอขณะที่อยู่ในสถานะ Ready (พร้อม) หากมี IP แอดเดรสปรากฏขึ้น แสดงว่าทำการเชื่อมต่อเครือข่ายแล้ว หากไม่มีให้รอสักครู่แล้วลองอีกครั้ง จดบันทึก IP แอดเดรสสำหรับใช้ระหว่างการติดตั้งซอฟต์แวร์ **ตัวอย่าง IP แอดเดรส: 192.168.0.1** หากต้องการกำหนดค่า IP แอดเดรสด้วยตนเอง ให้ดู "กำหนดค่า IP แอดเดรสด้วยตนเอง"

3. ดำเนินการต่อที่ "5. ค้นหาหรือดาวน์โหลดไฟล์การติดตั้งซอฟต์แวร์"

หมายเหตุ: ระหว่างการติดตั้งซอฟต์แวร์ให้เลือกตัวเลือกเพื่อ **Connect through a network** (เชื่อมต่อผ่านเครือข่าย) (Windows เท่านั้น)

! กำหนดค่า IP แอดเดรสด้วยตนเอง

คู่มือผู้ใช้เครื่องพิมพ์ เพื่อศึกษาข้อมูลเกี่ยวกับวิธีการกำหนดค่า IP แอดเดรสด้วยตนเอง ดูส่วน "การแก้ไขปัญหา" ของคู่มือนี้

5. ค้นหาหรือดาวน์โหลดไฟล์การติดตั้งซอฟต์แวร์



ดาวน์โหลดจากเว็บ

HP Easy Start

1. ไปที่ 123.hp.com
2. เลือก **HP LaserJet Printers** จากนั้น คลิก **Begin** (เริ่ม)
3. ทำตามคำแนะนำบนหน้าจอ ทำตามพรอมต์ เพื่อบันทึกไฟล์นี้ในคอมพิวเตอร์
4. เปิดไฟล์ซอฟต์แวร์จากโฟลเดอร์ที่บันทึกไฟล์ไว้ และดำเนินการตาม “6. ติดตั้งซอฟต์แวร์”

เว็บไซต์การสนับสนุนเครื่องพิมพ์

1. ไปที่ www.hp.com/support/ljM501
2. ภายใต้ตัวเลือก **Download** (ดาวน์โหลด) ให้คลิก **drivers, software, & firmware** (ไดรเวอร์ ซอฟต์แวร์ และเฟิร์มแวร์) แล้วเลือกระบบปฏิบัติการที่เหมาะสม
3. จาก **Driver - Product Installation Software** (ไดรเวอร์ - ซอฟต์แวร์การติดตั้งเครื่องพิมพ์) ให้พิจารณาตัวเลือกซอฟต์แวร์ที่จะใช้ จากนั้นคลิกปุ่ม **Download** (ดาวน์โหลด) ที่ด้านข้าง ทำตามพรอมต์ เพื่อบันทึกไฟล์นี้ในคอมพิวเตอร์
4. เปิดไฟล์ซอฟต์แวร์จากโฟลเดอร์ที่บันทึกไฟล์ไว้ และดำเนินการตาม “6. ติดตั้งซอฟต์แวร์”



ติดตั้งจากแผ่นซีดีเครื่องพิมพ์

สำหรับ Windows ไฟล์การติดตั้งซอฟต์แวร์มีอยู่ในแผ่นซีดีที่มากับเครื่องพิมพ์ สำหรับ OS X ไฟล์ในแผ่นซีดีมีลิงก์สำหรับดาวน์โหลดไฟล์จากเว็บ

1. ใส่แผ่นซีดีเครื่องพิมพ์ลงในคอมพิวเตอร์
2. ทำตาม “6. ติดตั้งซอฟต์แวร์”

หมายเหตุการติดตั้ง


สำหรับรายละเอียดเพิ่มเติมเกี่ยวกับซอฟต์แวร์สำหรับเครื่องพิมพ์ โปรดดูไฟล์หมายเหตุการติดตั้งในแผ่นซีดีเครื่องพิมพ์

6. ติดตั้งซอฟต์แวร์

โซลูชัน Windows

1. โปรแกรมติดตั้งซอฟต์แวร์จะตรวจหาภาษาของระบบปฏิบัติการ แล้วแสดงเมนูหลักของโปรแกรมการติดตั้งเป็นภาษานั้น เมื่อติดตั้งจากแผ่นซีดี หากโปรแกรมติดตั้งไม่เริ่มต้นภายใน 30 วินาที ให้เรียกดูไดรฟ์แผ่นซีดีบนคอมพิวเตอร์ และเปิดไฟล์ที่ชื่อ **SETUP.EXE**
2. หน้าจอ **Software Selection** (การเลือกซอฟต์แวร์) จะแสดงรายละเอียดซอฟต์แวร์ที่จะติดตั้ง
 - การติดตั้งซอฟต์แวร์ที่แนะนำจะมีไดรเวอร์การพิมพ์ และซอฟต์แวร์สำหรับคุณสมบัติเครื่องพิมพ์ทั้งหมด
 - ในการปรับแต่งซอฟต์แวร์ที่จะติดตั้ง ให้คลิกลิงก์ **Customize software selections** (กำหนดตัวเลือกซอฟต์แวร์เอง) เมื่อเสร็จสิ้น ให้คลิกปุ่ม **Next** (ถัดไป)
3. ทำตามคำแนะนำบนหน้าจอเพื่อติดตั้งซอฟต์แวร์
4. เมื่อพรอมต์ให้เลือกประเภทของการเชื่อมต่อ ให้เลือกตัวเลือกที่เหมาะสมสำหรับประเภทของการเชื่อมต่อต่อไปนี้
 - เชื่อมต่อกับเครื่องคอมพิวเตอร์นี้ โดยตรง โดยใช้สาย USB
 - เชื่อมต่อผ่านเครือข่าย

 **หมายเหตุ:** เมื่อเชื่อมต่อผ่านเครือข่าย วิธีที่ง่ายที่สุดในการตรวจหาเครื่องพิมพ์ คือการเลือก **Automatically find my printer on the network** (ค้นหาเครื่องพิมพ์บนเครือข่ายของฉันโดยอัตโนมัติ)

 **หมายเหตุ:** สำหรับการติดตั้งระบบไร้สาย ให้เลือกตัวเลือก **Help me set up a first-time wireless connection** (ช่วยฉันตั้งค่าการเชื่อมต่อไร้สายเป็นครั้งแรก) จากนั้นเลือก **Yes, retrieve the wireless settings on my computer** (ใช่ ดึงข้อมูลการตั้งค่าระบบไร้สายบนคอมพิวเตอร์ของฉัน)

โซลูชัน OS X

1. โปรแกรมติดตั้งซอฟต์แวร์จะตรวจหาภาษาของระบบปฏิบัติการ แล้วแสดงเมนูหลักของโปรแกรมการติดตั้งเป็นภาษานั้น
2. ทำตามคำแนะนำบนหน้าจอเพื่อติดตั้งซอฟต์แวร์ เมื่อพรอมต์ให้เชื่อมต่อเครื่องพิมพ์ โดยใช้สายเคเบิลที่เหมาะสมกับการเชื่อมต่อ
3. เมื่อสิ้นสุดขั้นตอนการติดตั้งซอฟต์แวร์ ให้ใช้ **HP Utility Setup Assistant** เพื่อกำหนดค่าตัวเลือกของเครื่องพิมพ์

หมายเหตุการติดตั้ง

ส่วนประกอบซอฟต์แวร์บางรายการไม่พร้อมใช้งานสำหรับระบบปฏิบัติการบางอย่าง หากต้องการข้อมูลเพิ่มเติม ให้ดูหมายเหตุการติดตั้งในแผ่นซีดีเครื่องพิมพ์

7. ตั้งค่าการพิมพ์ทางมือถือ (ไม่บังคับ)

ในการพิมพ์จากโทรศัพท์หรือแท็บเล็ต ให้เชื่อมต่ออุปกรณ์กับเครือข่ายเดียวกันกับเครื่องพิมพ์

อุปกรณ์ Apple iOS (AirPrint): เปิดเอกสารที่จะพิมพ์ จากนั้นเลือกไอคอน **Action** เลือก **พิมพ์** เลือกเครื่องพิมพ์ จากนั้นเลือก **พิมพ์**

อุปกรณ์ Android เวอร์ชันใหม่ (4.4 ขึ้นไป): เปิดเอกสารที่จะพิมพ์ และเลือกปุ่ม **เมนู** เลือก **พิมพ์** เลือกเครื่องพิมพ์ และเลือก **พิมพ์**

อุปกรณ์บางชนิดกำหนดให้ต้องดาวน์โหลดแอปพลิเคชัน HP Print Service จาก Google Play Store

อุปกรณ์ Android เวอร์ชันเก่า (4.3 หรือต่ำกว่า): ดาวน์โหลดแอป HP ePrint จาก Google Play สโตร์

Windows Phone: ดาวน์โหลดแอป HP AiO Remote จาก Windows Store

เรียนรู้เพิ่มเติมเกี่ยวกับการพิมพ์ทางมือถือ

ในการเรียนรู้เพิ่มเติมเกี่ยวกับตัวเลือกการพิมพ์ทางมือถืออื่น ๆ รวมถึงโซลูชัน ePrint เพิ่มเติม ให้สแกนรหัส QR หรือดูที่ส่วน “การพิมพ์ทางมือถือ” ของคู่มือผู้ใช้



 **หมายเหตุ:** การพิมพ์จากอุปกรณ์ไร้สายต้องการเชื่อมต่อเครือข่ายไร้สาย



8. ตั้งค่า HP ePrint ผ่านอีเมล (ไม่บังคับ)

ใช้ HP ePrint ผ่านอีเมลเพื่อพิมพ์เอกสาร โดยส่งเอกสารเป็นไฟล์แนบอีเมลไปยังที่อยู่อีเมลของเครื่องพิมพ์จากอุปกรณ์ใดก็ได้ที่เปิดใช้อีเมล แม้จากอุปกรณ์ที่ไม่ได้อยู่ในเครือข่ายเดียวกัน

ในการใช้ HP ePrint ผ่านอีเมล เครื่องพิมพ์ต้องมีคุณสมบัติดังต่อไปนี้

- เครื่องพิมพ์ต้องเชื่อมต่อกับเครือข่ายไร้สายและเชื่อมต่ออินเทอร์เน็ต
- ต้องเปิดใช้งาน HP Web Services ในเครื่องพิมพ์ และเครื่องพิมพ์ต้องมีการลงทะเบียนกับ HP Connected

เปิดใช้งาน HP Web Services

หมายเหตุ: ก่อนเปิดใช้งาน HP Web Services ให้ตรวจสอบว่าเครื่องพิมพ์เชื่อมต่อกับเครือข่ายแล้ว นอกจากนี้ ให้ตรวจสอบด้วยว่าไม่มีการเปิด HP Web Services ในระหว่างการตั้งค่าเครื่องพิมพ์ครั้งแรก

1. กดปุ่ม **OK** (ตกลง)
2. เปิดเมนู **HP Web Services**
3. เลือก **Print Information Sheet** (พิมพ์แผ่นข้อมูล) เครื่องพิมพ์จะพิมพ์แผ่นข้อมูลออกมา

4. เปิด HP Embedded Web Server ไม่ที่คอมพิวเตอร์ที่เชื่อมต่อเครือข่าย เปิดหน้าต่างเบราว์เซอร์ และพิมพ์ IP แอดเดรสที่แสดงบนแผ่นข้อมูลลงในช่องแอดเดรส จากนั้นกด **Enter**

หมายเหตุ: HP EWS ยังให้สิทธิ์การเข้าถึงไปยังการตั้งค่าเครื่องพิมพ์ขั้นสูงอื่นๆ อีกมากมายด้วย

5. ใน HP Embedded Web Server ให้คลิกแท็บ **HP Web Services**
6. คลิกปุ่ม **Enable** (เปิดใช้งาน) เครื่องพิมพ์จะเปิดใช้งาน Web Services หน้าข้อมูลประกอบด้วย รหัสเครื่องพิมพ์ที่คุณต้องใช้เพื่อลงทะเบียนเครื่องพิมพ์ HP ที่ HP Connected
7. ไปที่ www.hpconnected.com เพื่อสร้างบัญชี HP ePrint และทำขั้นตอนการตั้งค่าให้เสร็จสมบูรณ์

การแก้ไขปัญหา

คู่มือผู้ใช้

คู่มือผู้ใช้รวมถึงการใช้เครื่องพิมพ์ และข้อมูลการแก้ไขปัญหา ซึ่งมียูอยู่ในแผ่นซีดีเครื่องพิมพ์และบนเว็บ:

1. ไปที่ www.hp.com/support/ljm501
2. Click **Manuals** (คู่มือ)

สำหรับ Windows จะมีการทำสำเนาคู่มือผู้ใช้ ไปยังคอมพิวเตอร์ในระหว่างการติดตั้งซอฟต์แวร์ที่แนะนำ

Windows® XP, Windows Vista®, Windows® 7 และ Windows® 10:

คลิก **เริ่ม** เลือก **โปรแกรม** และ **โปรแกรมทั้งหมด** หรือ **แอปทั้งหมด** และเลือก **HP** เลือกไฟล์เดสก์ท็อปสำหรับเครื่องพิมพ์ HP จากนั้นเลือก **วิธีใช้**

Windows® 8:

บนหน้าจอ **เริ่ม** คลิกขวาบนพื้นที่ว่างของหน้าจอ และคลิก **แอปทั้งหมด** บนแถบแอป คลิกไอคอนที่มีชื่อเครื่องพิมพ์ และจากนั้นเลือก **วิธีใช้**

ตรวจสอบการอัปเดตเฟิร์มแวร์

1. บนแผงควบคุมของเครื่องพิมพ์ให้กดปุ่ม **OK** (ตกลง)
2. เปิดเมนู **Service** (บริการ)
3. เลือก **LaserJet Update** (การอัปเดต LaserJet)
4. เลือก **Check for Updates Now** (ตรวจสอบการอัปเดตตอนนี้)

ทรัพยากรการสนับสนุนเพิ่มเติม

สำหรับวิธีใช้ HP ที่รวมทุกอย่างสำหรับเครื่องพิมพ์ให้ไปที่ www.hp.com/support/ljm501:

- แก้ปัญหา
- ค้นหาคำแนะนำในการกำหนดค่าขั้นสูง
- ดาว์นโหลดการอัปเดตซอฟต์แวร์
- เข้าร่วมฟอรัมการสนับสนุน
- ค้นหาข้อมูลการรับประกันและข้อบังคับ
- เข้าถึงทรัพยากรการพิมพ์ทางมือถือ



การเชื่อมต่อเครือข่ายแบบไร้สาย (อีเทอร์เน็ต)

- ตรวจสอบว่าเครื่องพิมพ์มีการเชื่อมต่อกับพอร์ตเครือข่ายที่ถูกต้อง โดยใช้สายเคเบิลที่มีความยาวเหมาะสม
- ตรวจสอบว่าไฟถัดจากพอร์ตเครือข่ายเปิดอยู่
- ตรวจสอบว่ามีติดตั้งไดรเวอร์การพิมพ์บนคอมพิวเตอร์แล้ว
- ทดสอบการเชื่อมต่อเครือข่าย โดยการ Ping เครื่องพิมพ์ดังต่อไปนี้

Windows: คลิก **เริ่ม** > **เรียกใช้** พิมพ์ **cmd** แล้วกด **Enter** พิมพ์ **ping** เคาะวรรค แล้วพิมพ์ IP แอดเดรสของเครื่องพิมพ์ จากนั้นกด **Enter**
ตัวอย่าง IP แอดเดรส: 192.168.0.1

OS X: เปิดยูทิลิตี้เครือข่าย และพิมพ์ที่อยู่ IP ในบานหน้าต่าง **ping** กด **Enter** ตัวอย่าง IP แอดเดรส: 192.168.0.1

- หากหน้าต่างแสดงเวลาไปกลับ แสดงว่าเครือข่ายกำลังทำงาน
- หาก ping ไม่ทำงาน ให้ลองรีสตาร์ทเครื่องพิมพ์ และตรวจสอบขั้นตอนการเชื่อมต่อใหม่ทั้งหมดอีกครั้ง

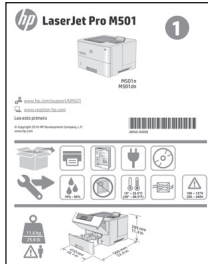


LaserJet Pro M501 入門指南



重要事項：

依照印表機硬體設定海報的**步驟 1-2** 進行後，再繼續執行**步驟 3**。



www.hp.com/support/ljM501



www.register.hp.com

3. 設定控制面板

開啟印表機電源後，等待印表機初始化。若要瀏覽控制面板，請使用箭號按鈕和 **OK** 按鈕。依照控制面板上的提示設定下列設定：

- 語言
- 位置
- 預設值

在「預設值」下，選擇其中一個選項：

- **自我管理**：適合大部分使用者的最佳化預設值，包括引導式設定和組態步驟以及自動更新。
- **IT 管理**：適合機群管理功能的最佳化預設值。

初始設定之後，可完全自訂這些設定。

註：選擇「列印資訊頁」以列印指示如何變更預設設定的頁面。

4. 選擇連線方法

直接在印表機與電腦之間連接的 USB 連線

使用 A 對 B 型 USB 纜線（僅隨附於部分機型）。

Windows

1. 請勿在安裝軟體之前連接 USB 纜線。如果已連接纜線，請拔除纜線後再繼續。安裝程序會在適當時間提示您接上連接線。

2. 繼續執行「5. 找出或下載軟體安裝檔」。

註：進行軟體安裝時，選擇「使用 USB 纜線直接連接這部電腦」的選項。（僅限 Windows）

Mac

1. 對於 Mac，先連接電腦與印表機之間的 USB 纜線，再進行軟體安裝。

2. 繼續執行「5. 找出或下載軟體安裝檔」。



有線（乙太網路）網路連線

使用標準網路線。（並未隨附纜線）。

1. 將網路線連接至印表機與網路。等待幾分鐘，讓印表機取得網路位址。
2. 在控制面板上，在顯示幕進入「就緒」狀態後加以檢視。若列出 IP 位址，則已建立網路連線。若未列出，請等候幾分鐘後再試一次。請記下 IP 位址以便在安裝軟體時使用。
IP 位址範例：192.168.0.1

若要手動設定 IP 位址，請參閱「手動設定 IP 位址」。

3. 繼續執行「5. 找出或下載軟體安裝檔」。

註：進行軟體安裝時，選擇「透過網路連接」的選項。（僅限 Windows）。

手動設定 IP 位址

請參閱印表機使用指南以取得有關手動設定 IP 位址的詳細資訊。請參閱本指南的「疑難排解」一節。

5. 找出或下載軟體安裝檔

從網路下載

HP Easy Start

1. 前往 123.hp.com。
2. 選擇「HP LaserJet Printers」（HP LaserJet 印表機），然後按一下「Begin」（開始）。
3. 依照螢幕上的指示進行。依照提示將檔案儲存至電腦。
4. 從儲存軟體檔案的資料夾啟動軟體檔案，然後繼續執行「6. 安裝軟體」。

產品支援網站

1. 前往 www.hp.com/support/ljm501。
2. 在「Download Options」（下載選項）下方，按一下「Drivers, Software, & Firmware」（驅動程式、軟體和韌體），然後選擇適當的作業系統。
3. 在「Driver - Product Installation Software」（驅動程式 - 產品安裝軟體）中，判斷要使用的軟體選項，然後按一下旁邊的「Download」（下載）按鈕。依照提示將檔案儲存至電腦。
4. 從儲存軟體檔案的資料夾啟動軟體檔案，然後繼續執行「6. 安裝軟體」。

從印表機光碟安裝

對於 Windows，印表機隨附的光碟提供軟體安裝檔。

對於 OS X，光碟中的檔案會包含可從網路下載檔案的連結。

1. 將印表機光碟插入電腦中。
2. 繼續執行「6. 安裝軟體」。

安裝注意事項

如需印表機所需軟體的詳細資訊，請參閱印表機光碟上的「安裝注意事項」檔案。

6. 安裝軟體

Windows 解決方案

1. 軟體安裝程式會偵測作業系統的語言，然後以相同的語言顯示安裝程式的主功能表。從光碟安裝時，如果安裝程式未在 30 秒鐘之後啟動，請瀏覽電腦上的 CD 光碟機，並啟動名稱為 SETUP.EXE 的檔案。
2. 「軟體選擇」畫面會詳細說明要安裝的軟體。
 - 建議的軟體安裝包括所有可用印表機功能的列印驅動程式及軟體。
 - 若要自訂已安裝的軟體，請按一下「自訂軟體選擇」連結。完成時，按一下「下一步」按鈕。
3. 依照螢幕上的指示安裝軟體。
4. 出現選取連線類型的提示時，選擇適合連線類型的選項：
 - 使用 USB 纜線直接連接這部電腦
 - 透過網路連接

 註：透過網路連接時，偵測印表機的最輕鬆方式就是選擇「Automatically find my printer on the network」（自動在網路上尋找我的印表機）。

 註：進行無線安裝時，選擇「協助我設定第一次無線連線」的選項，然後選擇「Yes, retrieve the wireless settings on my computer」（是，擷取電腦上的無線設定）。

OS X 解決方案

1. 軟體安裝程式會偵測作業系統的語言，然後以相同的語言顯示安裝程式的主功能表。
2. 依照螢幕上的指示安裝軟體。出現提示時，使用適合連線的纜線連接印表機。
3. 在軟體安裝程序結束時，使用 HP Utility 設定小幫手來設定印表機選項。

安裝注意事項

並非所有的軟體元件皆適用於所有作業系統。如需詳細資訊，請參閱印表機光碟上的安裝注意事項。

7. 設定行動列印（選用）

若要從手機或平板電腦列印，請將裝置連接到與印表機相同的網路。


Apple iOS 裝置 (AirPrint)：開啟要列印的項目，然後選擇動作圖示。選擇「列印」，選擇印表機，然後選擇「列印」。

較新的 Android 裝置 (4.4 或更新版本)：開啟要列印的項目，然後選擇功能表按鈕。選擇「列印」，選擇印表機，然後選擇「列印」。

某些裝置需要從 Google Play 商店下載 HP Print Service 外掛應用程式。

較舊的 Android 裝置 (4.3 或更舊版本)：從 Google Play 商店下載 HP ePrint 應用程式。

Windows Phone：從 Windows 市集下載 HP AiO Remote 應用程式。

 註：從無線裝置進行列印需要無線網路連線。

進一步了解行動列印

若要進一步了解其他行動列印選項（包括其他 ePrint 解決方案），請掃描 QR 碼，或參閱使用指南的「行動列印」一節。






8. 設定 HP ePrint via email (選用)

使用 HP ePrint via email，您只要在任何具備電子郵件功能的裝置上，將文件當做電子郵件附件傳送至印表機的電子郵件地址即可列印該文件，即使您使用的裝置不在同一個網路上也沒問題。

若要使用 HP ePrint via email，印表機必須符合以下要求：


- 印表機必須連線到有線網路，且必須能夠存取網際網路。
- 印表機必須啟用 HP Web 服務，而且您必須已向 HP Connected 註冊印表機。

啟用 HP Web 服務

 註：啟用 HP Web 服務之前，請確認印表機已連接至網路。此外，請確認 HP Web 服務沒有在印表機初始設定期間啟用。

1. 按下 **OK** 按鈕。
2. 開啟「**HP Web 服務**」功能表。
3. 選擇「**列印資訊頁**」。印表機將列印頁面。

4. 開啟 HP Embedded Web Server。移至已連接網路的電腦，開啟瀏覽器視窗，在網址方塊中輸入資訊頁所顯示的 IP 位址，然後按下 **ENTER**。

 註：HP EWS 也可讓您存取許多其他進階的印表機設定。

5. 在 HP Embedded Web Server 中，按一下「**HP Web 服務**」標籤。
6. 按一下「**Enable**」（啟用）按鈕。印表機隨即啟用 Web 服務。資訊頁包含向 HP Connected 註冊 HP 印表機所需的印表機代碼。
7. 前往 www.hpconnected.com，建立 HP ePrint 帳戶並完成設定程序。

疑難排解

使用指南

使用指南包含印表機使用方式及疑難排解資訊。這可在印表機光碟或網路上取得：

1. 前往 www.hp.com/support/ljM501。
2. 按一下「**Manuals**」（手冊）。

對於 Windows，使用指南會在進行建議的軟體安裝時複製到電腦。

Windows® XP、Windows Vista®、Windows® 7 和 Windows® 10：按一下「**開始**」，依序選擇「**程式集**」、「**所有程式**」或「**所有應用程式**」、「**HP**」、HP 印表機的資料夾，然後選擇「**說明**」。

Windows® 8：

在「**開始**」畫面中，以滑鼠右鍵按一下畫面中的空白區域，按一下應用程式列的「**所有應用程式**」，然後按一下顯示印表機名稱的圖示並選擇「**說明**」。

檢查韌體更新

1. 在印表機控制面板上，按下 **OK** 按鈕。
2. 開啟維修功能表。
3. 選擇「**LaserJet 更新**」。
4. 選擇「**立即檢查更新**」。

其他支援資源

如需包含印表機所有相關資訊的 HP 說明，請前往 www.hp.com/support/ljM501：

- 解決問題
- 尋找進階組態設定指示
- 下載軟體更新
- 加入支援論壇
- 尋找保固及法規資訊
- 存取行動列印資源



有線 (乙太網路) 網路連線

- 確認印表機以長度合適的纜線連接到正確的網路連接埠。
- 確認網路連接埠旁邊的指示燈已亮起。
- 確認電腦已安裝列印驅動程式。
- 使用 Ping 指令偵測印表機以測試網路連線：

Windows：按一下「**開始**」>「**執行**」。輸入 **cmd**，並按下 **ENTER**。依序輸入 **ping**、空格、印表機 IP 位址，然後按下 **ENTER**。IP 位址範例：192.168.0.1

OS X：開啟「網路工具程式」，並在 **Ping** 窗格中輸入 IP 位址。按下 **ENTER**。IP 位址範例：192.168.0.1

- 如果視窗顯示往返時間，表示網路運作正常。
- 如果 Ping 沒有作用，請嘗試重新啟動印表機，再重新檢查所有的連線步驟。



Hướng dẫn Bắt đầu Sử dụng LaserJet Pro M501

English.....	1
Bahasa Indonesia....	4
한국어.....	8
ไทย.....	11
繁体中文.....	14

! QUAN TRỌNG:

www.hp.com/support/ljM501

www.register.hp.com

Tiếng Việt..... 17

Làm theo **Bước 1 - 2** trên áp phích thiết lập phần cứng máy in, sau đó tiếp tục với **Bước 3**.



3. Thiết lập bảng điều khiển

Sau khi bật máy in, hãy đợi để máy in khởi động. Để điều hướng trên bảng điều khiển, hãy sử dụng các nút mũi tên và nút **OK**. Làm theo lời nhắc trên bảng điều khiển để cấu hình các cài đặt sau:

- Ngôn ngữ
- Vị trí
- Cài đặt mặc định

Trong phần **Default Settings** (Cài đặt Mặc định), chọn một trong các tùy chọn sau:

- **Tự quản lý:** Cài đặt mặc định được tối ưu hóa cho hầu hết người dùng bao gồm cập nhật tự động và các bước cấu hình cũng như thiết lập có hướng dẫn.
- **Quản lý bằng CNTT:** Cài đặt mặc định được tối ưu hóa cho thể quản lý nhiều máy in.

Cài đặt có thể tùy chỉnh hoàn toàn sau lần thiết lập đầu tiên.

LƯU Ý: Hãy chọn **Trang Thông tin In để in trang hướng dẫn** về cách thay đổi các cài đặt mặc định.

4. Chọn phương pháp kết nối

Kết nối USB trực tiếp giữa máy in và máy tính

Sử dụng cáp USB loại A tới B (không được cung cấp kèm theo bất kỳ mẫu nào).

Windows

1. Không kết nối cáp USB trước khi cài đặt phần mềm. Nếu cáp đã được cắm, hãy rút cáp trước khi tiếp tục. Quá trình cài đặt sẽ nhắc cắm cáp vào thời điểm phù hợp.

2. Tiếp tục với **"5. Tìm hoặc tải xuống tệp cài đặt phần mềm"**.

LƯU Ý: Trong quá trình cài đặt phần mềm, chọn tùy chọn để **Kết nối trực tiếp máy tính này bằng cáp USB** (Chỉ dành cho Windows).

Máy Mac

1. Đối với máy Mac, cắm cáp USB từ máy tính đến máy in trước khi cài đặt phần mềm.
2. Tiếp tục với **"5. Tìm hoặc tải xuống tệp cài đặt phần mềm"**.

Kết nối mạng có dây (Ethernet)

Sử dụng cáp mạng tiêu chuẩn. (Cáp không được cung cấp kèm theo sản phẩm.)

1. Cắm cáp mạng vào máy in và vào mạng. Đợi vài phút để máy in xác định địa chỉ mạng.
2. Trên bảng điều khiển, hãy xem trong khi màn hình ở trạng thái Ready (Sẵn sàng). Nếu có địa chỉ IP được liệt kê thì kết nối mạng đã được thiết lập. Nếu không, hãy đợi vài phút và thử lại. Lưu ý rằng địa chỉ IP được sử dụng trong khi cài đặt phần mềm.

Ví dụ về địa chỉ IP: 192.168.0.1

Để cấu hình địa chỉ IP theo cách thủ công, hãy xem **"Cấu hình địa chỉ IP theo cách thủ công"**.

3. Tiếp tục với **"5. Tìm hoặc tải xuống tệp cài đặt phần mềm"**.

LƯU Ý: Trong quá trình cài đặt phần mềm, hãy chọn tùy chọn để **Kết nối thông qua mạng** (Chỉ dành cho Windows).

Cấu hình địa chỉ IP theo cách thủ công

Xem hướng dẫn sử dụng máy in để biết cách cấu hình địa chỉ IP theo cách thủ công. Xem phần **"Khắc phục sự cố"** của hướng dẫn này.

5. Tìm hoặc tải xuống tệp cài đặt phần mềm



Tải xuống từ Web

Khởi động Dễ dàng của HP

1. Truy cập 123.hp.com.
2. Chọn **Máy in HP LaserJet** rồi nhấp vào **Begin** (Bắt đầu).
3. Làm theo hướng dẫn trên màn hình. Làm theo lời nhắc để lưu tệp vào máy tính.
4. Khởi chạy tệp phần mềm từ thư mục lưu tệp và tiếp tục với “6. Cài đặt phần mềm”.

Trang Web hỗ trợ sản phẩm

1. Truy cập www.hp.com/support/ljM501.
2. Trong **Download options** (Tùy chọn tải xuống), nhấp vào **drivers, software, & firmware** (trình điều khiển, phần mềm và chương trình cơ sở), sau đó chọn hệ điều hành phù hợp.
3. Từ **Trình điều khiển - Phần mềm Cài đặt Sản phẩm**, hãy xác định tùy chọn phần mềm cần sử dụng, sau đó nhấp vào nút Download (Tải xuống) bên cạnh tùy chọn đó. Làm theo lời nhắc để lưu tệp vào máy tính.
4. Khởi chạy tệp phần mềm từ thư mục lưu tệp và tiếp tục với “6. Cài đặt phần mềm”.



Cài đặt từ CD máy in

Đối với Windows, tệp cài đặt phần mềm được cung cấp trên CD đi kèm máy in.

Đối với OS X, tệp trên CD bao gồm liên kết để tải xuống các tệp từ Web.

1. Đưa đĩa CD máy in vào máy tính.
2. Tiếp tục với “6. Cài đặt phần mềm”.


i Ghi chú cài đặt


Để biết thêm thông tin chi tiết về phần mềm dành cho máy in, hãy xem tệp ghi chú cài đặt trên CD máy in.

6. Cài đặt phần mềm

Giải pháp Windows

1. Trình cài đặt phần mềm phát hiện ngôn ngữ của hệ điều hành, sau đó hiển thị menu chính của chương trình cài đặt bằng chính ngôn ngữ đó. Khi cài đặt từ đĩa CD, nếu chương trình cài đặt không bắt đầu sau 30 giây, hãy duyệt ổ đĩa CD trên máy tính và khởi chạy tệp có tên SETUP.EXE.
2. Màn hình **Software Selection** (Lựa chọn phần mềm) nêu chi tiết phần mềm sẽ được cài đặt.
 - Cài đặt phần mềm được khuyến nghị bao gồm trình điều khiển in và phần mềm cho tất cả các tính năng máy in khả dụng.
 - Để tùy chỉnh phần mềm được cài đặt, hãy nhấp vào **Customize software selections** link (liên kết Tùy chỉnh lựa chọn phần mềm). Khi hoàn tất, nhấp vào nút **Next** (Tiếp theo).
3. Thực hiện theo hướng dẫn trên màn hình để cài đặt phần mềm.
4. Khi được nhắc chọn loại kết nối, hãy chọn tùy chọn thích hợp cho loại kết nối:
 - **Kết nối trực tiếp với máy tính này bằng cáp USB**
 - **Kết nối qua mạng**

 **LƯU Ý:** Khi kết nối qua mạng, cách dễ nhất để phát hiện máy in là chọn **Tự động tìm máy in của tôi trên mạng**.

 **LƯU Ý:** Đối với cài đặt không dây, chọn tùy chọn **Help me set up a first-time wireless connection** (Giúp tôi thiết lập kết nối không dây lần đầu tiên), sau đó chọn **Yes, retrieve the wireless settings on my computer** (Có, truy xuất cài đặt không dây trên máy tính của tôi).

Giải pháp OS X

1. Trình cài đặt phần mềm phát hiện ngôn ngữ của hệ điều hành, sau đó hiển thị menu chính của chương trình cài đặt bằng chính ngôn ngữ đó.
2. Thực hiện theo hướng dẫn trên màn hình để cài đặt phần mềm. Khi được nhắc, hãy kết nối máy in bằng cáp kết nối phù hợp.
3. Vào cuối quá trình cài đặt phần mềm, sử dụng **HP Utility Setup Assistant** (Trợ lý thiết lập tiện ích HP) để cấu hình các tùy chọn in.

i Ghi chú cài đặt

Không phải tất cả các thành phần phần mềm đều có sẵn cho mọi hệ điều hành. Để biết thêm thông tin, hãy xem tệp tin ghi chú cài đặt trên CD máy in.



7. Thiết lập in cho thiết bị di động (tùy chọn)

Để in từ điện thoại hoặc máy tính bảng, hãy kết nối thiết bị và máy in với cùng một mạng.

Thiết bị iOS của Apple (AirPrint): Mở mục cần in, rồi chọn biểu tượng **Action** (Hành động). Chọn **Print** (In), chọn máy in, sau đó chọn **Print** (In).

Thiết bị Android mới hơn (4.4 trở lên): Mở mục cần in và chọn nút **Menu**. Chọn **Print** (In), chọn máy in và chọn **Print** (In).

Một số thiết bị yêu cầu tải xuống ứng dụng plugin HP Print Service từ Cửa hàng Google Play.

Thiết bị Android cũ hơn (4.3 trở xuống): Tải xuống ứng dụng HP ePrint từ cửa hàng Google Play.

Windows Phone: Tải xuống ứng dụng HP AiO Remote từ Windows Store.

i Tìm hiểu thêm về tính năng in từ thiết bị di động

Để tìm hiểu thêm về các tùy chọn in qua di động khác, kể cả các giải pháp ePrint bổ sung, hãy quét mã QR hoặc xem phần “In qua di động” của hướng dẫn sử dụng.



LƯU Ý: In từ thiết bị không dây yêu cầu kết nối mạng không dây.



8. Thiết lập HP ePrint qua email (tùy chọn)

Sử dụng HP ePrint qua email để in tài liệu bằng cách gửi tài liệu dưới dạng tệp đính kèm trong email đến địa chỉ email của máy in từ bất kỳ thiết bị nào hỗ trợ email, thậm chí từ các thiết bị không sử dụng cùng một mạng.

Để dùng HP ePrint qua email, máy in phải đáp ứng các yêu cầu sau:

- Máy in phải được kết nối với mạng có dây và phải có khả năng truy cập vào Internet.
- Máy in phải bật HP Web Services (Dịch vụ Web HP) và máy in phải được đăng ký HP Connected.

Bật HP Web Services



LƯU Ý: Trước khi bật HP Web Services, hãy kiểm tra xem bạn đã kết nối máy in với mạng chưa. Ngoài ra, xác nhận rằng HP Web Services không được bật trong quá trình thiết lập máy in ban đầu.

1. Bấm nút **OK**.
2. Mở menu **HP Web Services**.
3. Chọn **Trang Thông tin In**. Máy in sẽ in trang.

4. Mở Máy chủ Web Nhúng HP. Truy cập máy tính đã kết nối mạng, mở cửa sổ trình duyệt rồi nhập địa chỉ IP được hiển thị trong hộp địa chỉ trên trang thông tin, sau đó nhấn **Enter**.



LƯU Ý: HP EWS còn cung cấp quyền truy cập vào nhiều cài đặt máy in nâng cao khác.

5. Trong Máy chủ Web Nhúng HP, hãy nhấp vào tab **HP Web Services**.
6. Nhấp vào nút **Enable** (Bật). Máy in bật Web Services (Dịch vụ Web). Trang thông tin có chứa mã máy in cần thiết để bạn đăng ký máy in HP tại HP Connected.
7. Hãy truy cập www.hpconnected.com để tạo tài khoản HP ePrint và hoàn thành quá trình thiết lập.

Xử lý sự cố

Hướng dẫn sử dụng

Hướng dẫn sử dụng bao gồm thông tin xử lý sự cố và sử dụng máy in. Hướng dẫn này có trên CD máy in và trên Web:

1. Truy cập www.hp.com/support/ljM501.
2. Nhấp vào **Manuals** (Hướng dẫn sử dụng).

Đối với Windows, hướng dẫn sử dụng được sao chép sang máy tính trong quá trình cài đặt phần mềm được khuyến nghị.

Windows® XP, Windows Vista®, Windows® 7 và Windows® 10: Nhấp vào **Start** (Bắt đầu), chọn **Programs** (Chương trình), **All Programs** (Tất cả Chương trình) hoặc **All Apps** (Tất cả Ứng dụng), chọn **HP**, chọn thư mục dành cho máy in HP, sau đó chọn **Help** (Trợ giúp).

Windows® 8:

Trên màn hình **Start** (Bắt đầu), nhấp chuột phải vào khu vực trống trên màn hình, nhấp **All Apps** (Tất cả Ứng dụng) trên thanh ứng dụng, nhấp vào biểu tượng có tên máy in, sau đó chọn **Help** (Trợ giúp).

Kiểm tra các bản cập nhật chương trình cơ sở

1. Trên bảng điều khiển của máy in, nhấn nút **OK**.
2. Mở menu **Service** (Dịch vụ).
3. Chọn **LaserJet Update** (Cập nhật LaserJet).
4. Chọn **Check for Updates Now** (Kiểm tra Bản cập nhật ngay Bây giờ).

Tài nguyên hỗ trợ bổ sung

Để xem phần trợ giúp toàn diện của HP dành cho máy in, hãy truy cập www.hp.com/support/ljM501:

- Giải quyết sự cố
- Tìm hướng dẫn cấu hình nâng cao
- Tải về các bản cập nhật phần mềm
- Tham gia các diễn đàn hỗ trợ
- Tìm thông tin về quy định và bảo hành
- Truy cập vào tài nguyên in dành cho thiết bị di động



Kết nối mạng có dây (Ethernet)

- Hãy kiểm tra xem máy in có được cắm vào đúng cổng mạng bằng cáp có độ dài phù hợp không.
- Kiểm tra xem các đèn bên cạnh cổng mạng có sáng không.
- Xác minh rằng trình điều khiển in đã được cài đặt trên máy tính.
- Kiểm tra kết nối mạng bằng cách ping máy in:

Windows: Nhấp vào **Start** (Bắt đầu) > **Run** (Chạy). Nhập **cmd**, sau đó nhấn **Enter**. Nhập **ping**, nhập khoảng trắng, nhập địa chỉ IP máy in, sau đó nhấn **Enter**. **Ví dụ về địa chỉ IP:** 192.168.0.1

OS X: Mở Network Utility (Tiện ích mạng) và nhập địa chỉ IP vào ngăn **ping**. Nhấn **Enter**. **Ví dụ về địa chỉ IP:** 192.168.0.1

- Nếu cửa sổ hiển thị thời gian hai chiều, thì mạng đang hoạt động.
- Nếu ping không hoạt động, hãy thử khởi động lại máy in và kiểm tra lại tất cả các bước kết nối.

© Copyright 2016 HP Development Company, L.P.

Reproduction, adaptation or translation without prior written permission is prohibited, except as allowed under the copyright laws.

The information contained herein is subject to change without notice.

The only warranties for HP products and services are set forth in the express warranty statements accompanying such products and services. Nothing herein should be construed as constituting an additional warranty. HP shall not be liable for technical or editorial errors or omissions contained herein.

Trademark Credits

Windows® is a U.S. registered trademark of Microsoft Corporation.

OS X is a trademark of Apple Inc., registered in the U.S. and other countries.

AirPrint is a trademark of Apple Inc., registered in the U.S. and other countries.

FCC Regulations

This equipment has been tested and found to comply with the limits for a Class A digital device, pursuant to Part 15 of the FCC rules. These limits are designed to provide reasonable protection against harmful interference in a residential installation. This equipment generates, uses, and can radiate radio-frequency energy. If this equipment is not installed and used in accordance with the instructions, it may cause harmful interference to radio communications. However, there is no guarantee that interference will not occur in a particular installation. If this equipment does cause harmful interference to radio or television reception, which can be determined by turning the equipment off and on, correct the interference by one or more of the following measures:

- Reorient or relocate the receiving antenna.
- Increase separation between equipment and receiver.
- Connect equipment to an outlet on a circuit different from that to which the receiver is located.
- Consult your dealer or an experienced radio/TV technician.

Any changes or modifications to the product that are not expressly approved by HP could void the user's authority to operate this equipment. Use of a shielded interface cable is required to comply with the Class A limits of Part 15 of FCC rules. For more regulatory information, see the electronic user guide. HP shall not be liable for any direct, indirect, incidental, consequential, or other damage alleged in connection with the furnishing or use of this information.

